



Naturalis Repository

New threats of an old enemy: The distribution of the shipworm *Teredo navalis* L. (Bivalvia: Teredinidae) related to climate change in the Port of Rotterdam area, the Netherlands

Peter Paalvas, Gerard van der Velde

Downloaded from:

<http://dx.doi.org/10.1016/j.marpolbul.2011.05.009>

Article 25fa Dutch Copyright Act (DCA) - End User Rights

This publication is distributed under the terms of Article 25fa of the Dutch Copyright Act (Auteurswet) with consent from the author. Dutch law entitles the maker of a short scientific work funded either wholly or partially by Dutch public funds to make that work publicly available following a reasonable period after the work was first published, provided that reference is made to the source of the first publication of the work.

This publication is distributed under the Naturalis Biodiversity Center 'Taverne implementation' programme. In this programme, research output of Naturalis researchers and collection managers that complies with the legal requirements of Article 25fa of the Dutch Copyright Act is distributed online and free of barriers in the Naturalis institutional repository. Research output is distributed six months after its first online publication in the original published version and with proper attribution to the source of the original publication.

You are permitted to download and use the publication for personal purposes. All rights remain with the author(s) and copyrights owner(s) of this work. Any use of the publication other than authorized under this license or copyright law is prohibited.

If you believe that digital publication of certain material infringes any of your rights or (privacy) interests, please let the department of Collection Information know, stating your reasons. In case of a legitimate complaint, Collection Information will make the material inaccessible. Please contact us through email: collectie.informatie@naturalis.nl. We will contact you as soon as possible.



New threats of an old enemy: The distribution of the shipworm *Teredo navalis* L. (Bivalvia: Teredinidae) related to climate change in the Port of Rotterdam area, the Netherlands

Peter Paalvast^{a,*}, Gerard van der Velde^{b,c}

^a Ecoconsult, Asterstraat 19, 3135 HA Vlaardingen, The Netherlands

^b Radboud University Nijmegen, Institute for Water and Wetland Research, Department of Animal Ecology and Ecophysiology, P.O. Box 9010, 6500 GL Nijmegen, The Netherlands

^c Netherlands Centre for Biodiversity Naturalis, P.O. Box 9517, 2300 RA Leiden, The Netherlands

ARTICLE INFO

Keywords:

Shipworm
Salinity
River discharge
Estuaries
Global warming
Sea level rise

ABSTRACT

The effects of four climate change scenarios for the Netherlands on the distribution of the shipworm upstream of the Rhine–Meuse estuary are described. Global warming will cause dry and warmer summers and decreased river discharges. This will extend the salinity gradient upstream in summer and fall and may lead to attacks on wooden structures by the shipworm. Scenarios including one or two degree temperature increases by 2050 compared to 1990 with a weak change in the air circulation over Europe will lead to an increased chance of shipworm damage upstream from once in 36 years to once in 27 or 22 years, respectively; however, under a strong change in air circulation, the chance of shipworm damage increases to once in 6 or 3 years, respectively. The upstream expansion of the distribution of the shipworm will also be manifested in other northwest European estuaries and will be even stronger in southern Europe.

© 2011 Elsevier Ltd. All rights reserved.

1. Introduction

Shipworms (Teredinidae) are wood-boring marine bivalves. The shipworm *Teredo navalis* L. appeared in 1730 in the coastal waters of the Netherlands and was described by Sellius (1733) as *Teredo marina*. Its origin is unknown, and the species is therefore described as cryptogenic by Hoppe (2002). In the successive years of 1731 and 1732, massive destruction of the wooden constructions that protected the dikes in Zeeland and Westfrisland occurred (Vrolik et al., 1860). Authorities attempted to use tropical hardwoods and arsenic and to cover the wooden dike gates with iron plates and nails, but the only (very expensive) solution was changing the mode of dike construction. This began as soon as 1733 by defending the dikes with imported stones, and over the centuries, this has led to the “petrification” of large parts of the Dutch coastline. Later outbreaks of the species took place in the Netherlands in 1770, 1827, 1858 and 1859. Not only were sluices and dolphins in harbors upstream of the Rhine–Meuse estuary found to be infested in 1826, but quays also collapsed. Low river discharges resulting in increased salinity had created favorable conditions for the shipworm. The shipworm is still commonly found in Dutch coastal waters and enclosed salt water

bodies in the Dutch Delta Area (Van Benthem Jutting, 1943; De Bruyne, 1994).

If shipworms encounter optimal abiotic conditions, they are able to destroy fir piles 15 cm in diameter in six weeks (Snow, 1917), and even 10 m long, 25 cm thick oak pilings can be turned into rubble in 7 months (Cobb, 2002). In 1995, shipworm damage in the US was estimated to cost approximately US\$ 200 million per year (Cohen and Carlton, 1995). Over the centuries, many attempts to protect wood structures from shipworm attacks have more or less failed. They have used copper and lead plating, nails with large flat heads (Teredo-nails), paraffin, tar, asphalt, and paints. The most effective deterrent, creosote, has been banned in many countries because of its toxic and carcinogenic properties (Snow, 1917; Hoppe, 2002). Chemical impregnation with chrome copper arsenate (CCA) or borax (CKB) is widely used as a wood preservative and is effective, although this practice remains controversial among environmentalists (Hoppe, 2002).

The adult shipworm tolerates salinity conditions between 5 and 35 (Nair and Sarawathy, 1971) and thrives and reproduces at salinities of 9 and higher (Kristensen, 1969; Soldatova, 1961 in Tuente et al., 2002). Boring activity stops below a salinity of 9–10. Pelagic shipworm larvae survive at salinities as low as 6, and below that salinity level, pediveligers die within a few days (Hoagland, 1986). It was observed in Germany that a low salinity of 9 prevented the establishment of shipworm larvae (Hoppe, 2002). At water current velocities exceeding $0.8 \text{ m}^1 \text{ s}^{-1}$, shipworm larvae

* Corresponding author. Tel.: +31 107537549; fax: +31 847220307.

E-mail addresses: peter.paalvast@gmail.com (P. Paalvast), g.vandervelde@science.ru.nl (G. van der Velde).

can no longer attach to wood (Quayle, 1992). The optimal water temperatures for growth and reproduction range between 15 and 25 °C. Spawning is initiated when the temperature rises above 11 to 12 °C. These animals may breed from May until October (Grave, 1928). First year animals may reach sexual maturity in six weeks (Lane, 1959). Temperatures up to 30 °C are tolerated. Boring activity decreases below 10 °C and stops at 5 °C (Roch, 1932; Norman, 1977). At temperatures near the freezing point, shipworms hibernate until the water temperature becomes favorable again.

The complete salinity gradient of the Rhine–Meuse estuary is present in the Port of Rotterdam area, and a vital shipworm population exists in the large polyhaline harbors in its western region (Beerkanaal and Calandkanaal). *T. navalis* settlement in the Port of Rotterdam area decreases with increasing distance from the sea floor in both test panels and beams (Paalvast and Van der Velde, 2011). This was also found by Scheltema and Truitt (1956) in test panels in coastal waters of Maryland in the US and by Tuente et al. (2002) in the harbors of Bremerhaven in Germany.

The situation in the Rotterdam port area, which is one of the largest ports in the world, can be used as a typical example of the estuaries of all large temperate rivers in western Europe. Various climate models (Van den Hurk et al., 2006, 2007; Boé et al., 2009; Diaz-Nieto and Wilby, 2005) used to predict the effects of global warming on the hydrology of these large rivers show, on average, a serious decrease in precipitation during summer and fall, leading to lower river discharges. Combined with an expected sea level rise, this will lead to increasing salinity over large parts of the estuarine gradient (Beijk, 2008).

Therefore, the following research question was formulated: what is the risk of shipworm damage (i.e., the expansion of its distribution upstream) under present climate conditions and under climate change due to global warming?

2. Materials and methods

2.1. Study area

The Port of Rotterdam is situated in the estuary of the Rhine and Meuse rivers (Fig. 1). It stretches over a length of 40 km and covers 10,500 hectares, 3440 hectares of which are covered by harbor waters and 1960 hectares, by rivers and canals. Under average con-

ditions, with a Rhine river discharge at the Dutch–German border (Qbr) of 2200 m³ s⁻¹, the complete salinity gradient from fresh to seawater is found in this part of the estuary. This salinity gradient moves downstream at ebb tide and upstream at floodtide. The hydrology of the area is strongly controlled by means of the drainage program for the Haringvliet sluices (Fig. 1) based on the discharge of the Rhine at the Dutch–German border (Qbr). The degree to which the sluice gates are opened at ebb tide increases with increasing discharge of fresh water. To avoid salinization upstream of Rotterdam, 1500 m³ s⁻¹ of fresh water is directed to the Port of Rotterdam area, i.e., the Nieuwe Waterweg (1300 m³ s⁻¹) and the Hartelkanaal (200 m³ s⁻¹). This flow of fresh water via the Port of Rotterdam area can be maintained between a Qbr of 1700 m³ s⁻¹ and 4500 m³ s⁻¹. Below 1700 m³ s⁻¹, the salinity gradient shifts landward, while above 4500 m³ s⁻¹ it moves seaward. At a Qbr of approximately 1100 m³ s⁻¹, the Haringvliet sluices are closed completely, and both Meuse and Rhine waters flow into the sea at the Hook of Holland. The isohalines of the bottom water in the area under average and low river discharges (1000 m³ s⁻¹) were calculated using the RIJMAMO model of Rijkswaterstaat (Bol and Kraak, 1998) (Fig. 2A and B).

The Rhine–Meuse estuary is microtidal, with an average tidal range of 1.75 m at the Hook of Holland, which gradually decreases upstream to 1.10 m at Hagestein on the Lek and 0.25 m at Heusden on the Meuse. At springtide, the tidal cycle at the Hook of Holland exhibits approximately a 4 h flood period, a 4 h ebb period and a 4.5 h low-water period.

Under conditions of average river discharge, the water above the sea floor of the harbors of the Nieuwe Maas (Fig. 2A) in the eastern region is fresh to oligohaline, but at discharges below 1000 m³ s⁻¹, the area becomes α -mesohaline, with salinities over 10. When the discharge of the Rhine river remains below 1000 m³ s⁻¹ for a few weeks during the shipworm breeding season, conditions might become favorable for the bivalves (Paalvast and Van der Velde, 2011). Larvae transported with the tidal currents to the eastern part of the Port of Rotterdam area could settle and grow in the wooden oak and pine poles on which several old quays are build, particularly in harbors where the current velocity is considerably reduced. Salinity depth profiles show a sharp increase in salinity one to two meters above the sea floor under low river discharges (< 1000 m³ s⁻¹), which makes this water layer suitable for the settlement and growth of the shipworm. In the summer of

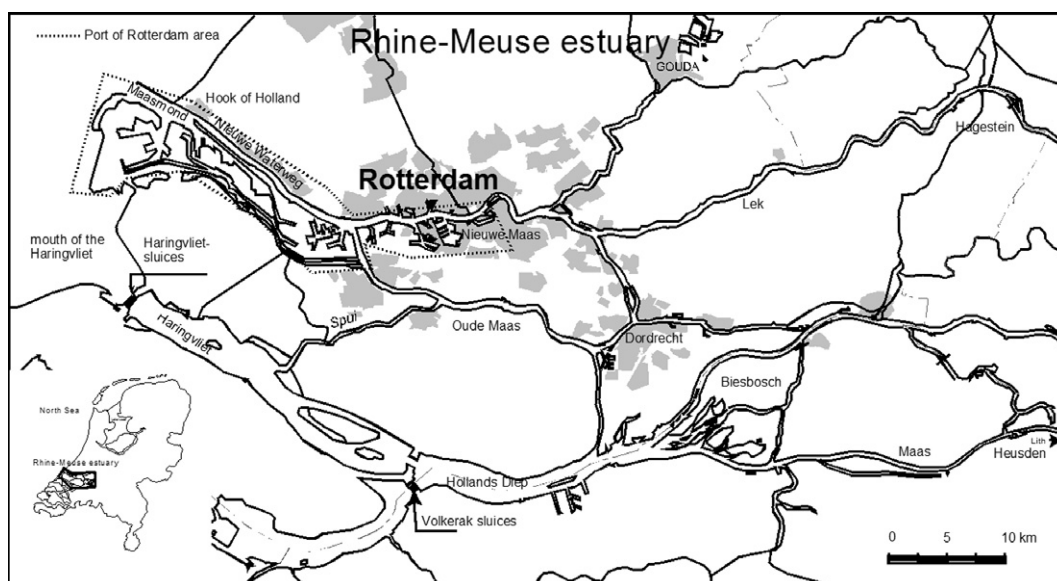


Fig. 1. The Port of Rotterdam in the Rhine–Meuse Estuary.

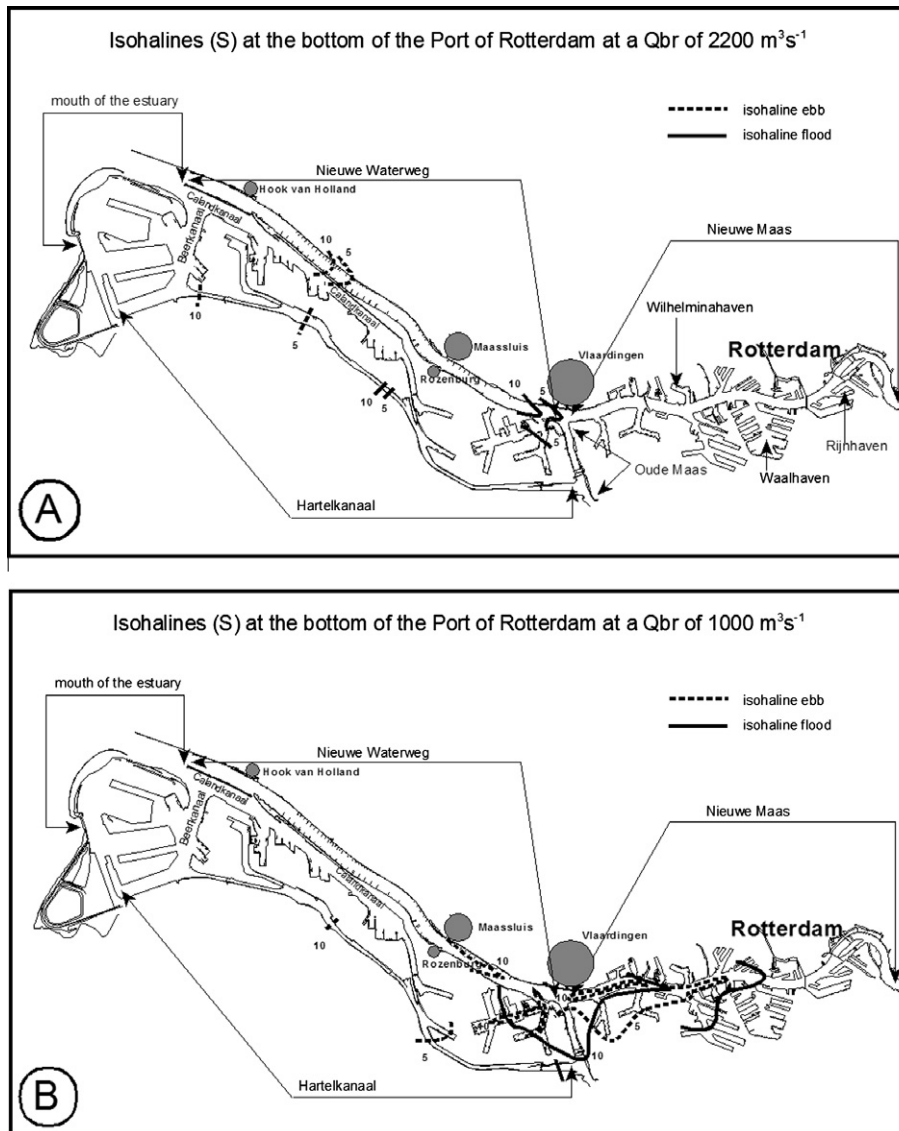


Fig. 2. (A) The 5 and 10 isohalines during ebb and flood periods in the Port of Rotterdam area under an average discharge of the Rhine at the Dutch–German border (Qbr) of $2200 \text{ m}^3 \text{ s}^{-1}$. (B) The 5 and 10 isohalines during ebb and flood periods in the Port of Rotterdam area under a discharge of the Rhine at the Dutch–German border (Qbr) of $1000 \text{ m}^3 \text{ s}^{-1}$.

2003, the discharge of the Rhine river dropped below $1000 \text{ m}^3 \text{ s}^{-1}$, and the salinity in the eastern part of the Port of Rotterdam area rose to levels above 10 (Paalvast and Van der Velde, 2011).

2.2. Risk analysis

SIMONA is the hydraulics information system of the Ministry of Transport (Ministry of Transport, Public Works and Water Management, 2008), consisting of a collection of mathematical simulation models that describes hydrodynamic processes. It includes four models for the simulation of hydrodynamic phenomena, such as simulations of tides, the transport of solutes in water, and water movements, and it is designed as a layered system that makes use of uniform data storage. The Port of Rotterdam Authority uses SIMONA for forecasting hydrodynamics 36 h in advance twice a day.

Using the SIMONA modeling system with the (critical) river discharge (crit-Qbr) under the prevailing climate conditions in the eastern part of the Port of Rotterdam as far upstream as the Rijnhaven (Fig. 2A), the salinity at one to two meters above the sea floor

reaches a permanent level (9 or higher) corresponding to necessary conditions for the shipworm to settle, and its growth was computed (Fig. 3).

Van den Hurk et al. (2006) of the Royal Netherlands Meteorological Institute have elaborated climate change scenarios for the Netherlands known as the KNMI'06 scenarios (Fig. 4). Two anticipated circulation regime changes are included in the scenarios: a strong circulation change, which induces warmer and moister winter seasons and increases the likelihood of dry, warm summer conditions, and a weak circulation change. Both regimes are presented for $+1 \text{ }^\circ\text{C}$ and $+2 \text{ }^\circ\text{C}$ global temperature increases for 2050 compared to 1990, producing a total of four scenarios. In the G scenarios, the maximum mean sea level rise is 25 cm, and in the W scenarios it is 35 cm.

Rhineflow (Van Deursen, 1995, 2003) is a spatially distributed water balance model of the Rhine basin that can simulate river flows, soil moisture, snow pack and groundwater storage with a 10 days time step. In order of the Ministry of Transport, Carthago Consultancy, Rotterdam, simulated the effects of these climate scenarios using this model in terms of the percentage change (Fig. 5)

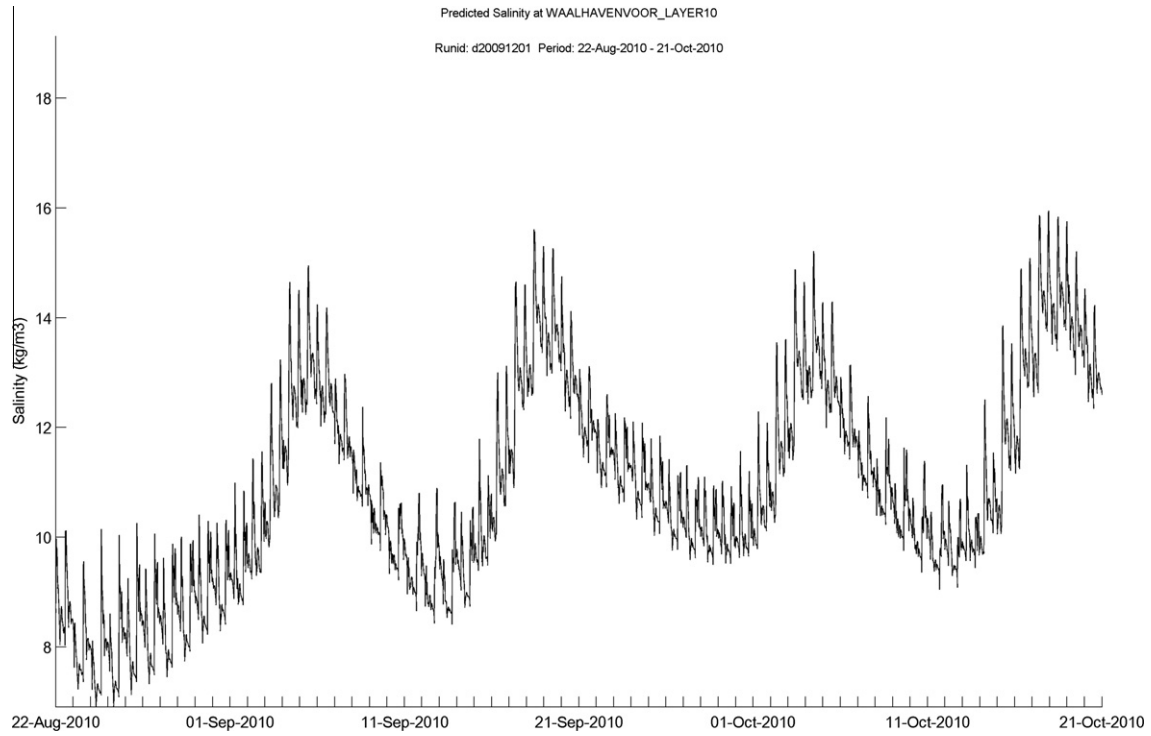


Fig. 3. Example of the output of the SIMONA hydraulics information system at a Qbr of $700 \text{ m}^3 \text{ s}^{-1}$ for the salinity at the sea floor of the Waalhaven in the eastern part of the Port of Rotterdam area.

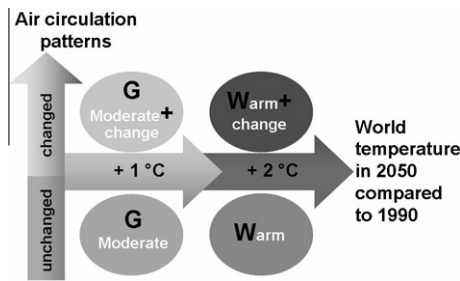


Fig. 4. Schematic overview of the four KNMI'06 scenarios (after Van den Hurk, et al., 2006).

in the daily river discharge (Van Deursen, 2006). This relative change in the discharge under each scenario was applied to measurements of the average daily discharge at the Dutch–German border (Qbr) over the period 1901–2008 to simulate the discharge under these scenarios. The crit-Qbr for the KNMI'06 scenarios in relation to rising sea level was elaborated.

A period of 14 days of crit-Qbr was considered as the minimum for shipworm settlement and boring to cause damage, and a period of 42 days was considered for the worms to complete their lifecycle (Richards et al., 1984).

By counting the number of days per year on which the discharge over the period 1901–2008 and the simulated discharges over the same period for each of the KNMI'06 scenarios reached the crit-Qbr or lower, the number of periods of 14 days or longer

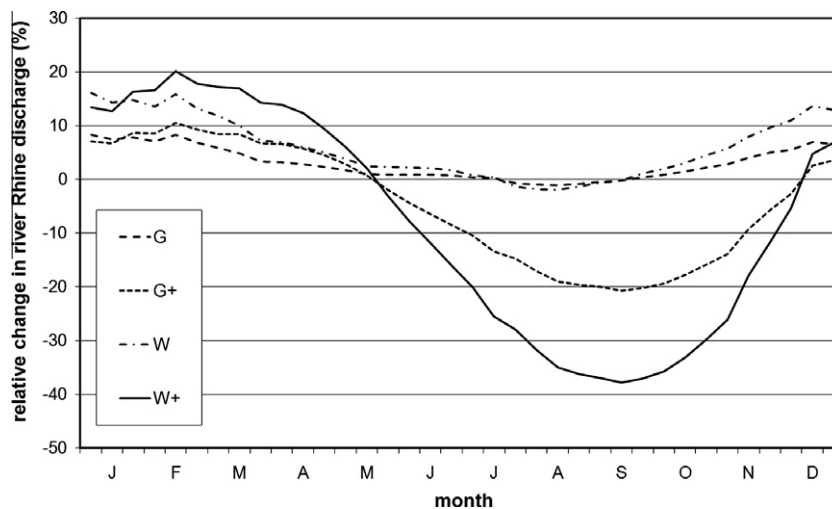


Fig. 5. Simulated relative change in the discharge of the Rhine river as a consequence of the KNMI'06 scenarios (after Van Deursen, 2006).

and their repetition time (risk of damage) were calculated. The length of the periods was used to determine whether the shipworm could complete its lifecycle in the eastern part of the Port of Rotterdam under the KNMI'06 scenarios.

3. Results

3.1. Risk of damage under the present conditions

Using the SIMONA modeling system, it was calculated that for the Port of Rotterdam area, a discharge of $700 \text{ m}^3 \text{ s}^{-1}$ or less (crit-Qbr) of the Rhine river at the Dutch–German border under the prevailing climate conditions would lead, within a week, to salinities of the bottom water in the harbors of the Nieuwe Maas in the eastern part of the Port of Rotterdam upstream to the Rijnhaven (Fig. 2A) appropriate for settlement and growth of the shipworm (and, thus, expansion of its distribution upstream). From 1901 to 2008, the crit-Qbr was reached for a period of 2 weeks or longer in only 3 years (Table 1, Fig. 6), which indicates a repetition time of 36 years, or that the risk of damage is once in 36 years. The longest uninterrupted period lasted 34 days, which is too short for the shipworm to complete its life cycle.

3.2. Risk of damage due to climate change

With the sea level rise under the KNMI'06 scenarios for 2050, the required salinity conditions for the settlement and growth of the shipworm in the eastern part of the Port of Rotterdam upstream to the Rijnhaven (and, thus, expansion of its distribution upstream) will occur at a discharge of approximately $800 \text{ m}^3 \text{ s}^{-1}$ or lower (crit-Qbr).

Under the G and W scenarios, with a weak change in air circulation patterns, there is only a slight decrease in river discharge in summer and fall (Fig. 5), and thus, the increase in the number of days with a crit-Qbr is small compared with the number of days with a crit-Qbr observed over the period 1901–2008 (Figs. 6–8). For the G and W scenarios, the crit-Qbr is reached for 14 days or longer in only 5 and 4 years, respectively, resulting in risks of damage once in 22 and 27 years (Table 1). Under both scenarios, the shipworm is able to complete its lifecycle in 1 or 2 years over a period of 108 years for G and W, respectively.

Under a future climate with a strong change in air circulation patterns, scenario G+ leads to many days and to several periods of 14 days or longer associated with a crit-Qbr in summer and fall (Table 1, Figs. 7 and 8) and a considerable risk of damage once in 6 years. In 50% of these periods, the shipworm could complete its lifecycle between one to three times in a year. In three periods, the crit-Qbr reaches values less than $600 \text{ m}^3 \text{ s}^{-1}$ for several days.

Under a future climate with a strong change in air circulation patterns, scenario W+ will result in a period of 14 days or longer with a crit-Qbr almost once in approximately 2 years, and once in 4 years, the shipworm could complete its life cycle from one to three times in a year.

Under the G+ and W+ scenarios, there is no significant difference in the lengths of periods of potential shipworm damage ($t(64) = -0.37, p > 0.7$).

4. Discussion

The increased risk of the extension of the shipworm towards the eastern part of the Port of Rotterdam as far as the Rijnhaven depends greatly on a temperature increase with changed air circulation patterns. However, under the present situation, at discharges below $1000 \text{ m}^3 \text{ s}^{-1}$, there is salinization above the sea floor in the most downstream part of the eastern portion of the Port of Rotter-

Table 1

Number of years with periods of 14 days or longer with a crit-Qbr or lower and years with a Qbr $< 600 \text{ m}^3 \text{ s}^{-1}$ with a risk of shipworm damage under the present climate conditions (1990) and the KNMI'06 scenarios for 2050, the length of the periods, their repetition time and the number of periods > 42 days for the shipworm to complete its life cycle.

Climate scenarios	Present	G	G+	W	W+
Number of years	3	5	18	4	45
Number of extreme years Qbr $< 600 \text{ m}^3 \text{ s}^{-1}$	0	0	3	0	11
Number of periods	3	7	20	4	46
Average length periods in days	21.7	25.1	53.7	52.0	57.0
Standard deviation	10.7	11.6	34.5	31.3	33.6
Maximum length in days	34.0	49.0	132.0	93.0	142.0
Minimum length in days	15.0	16.0	14.0	27.0	14.0
Median length in days	16.0	19.0	46.0	44.0	49.5
Repetition time in years	36	21.6	6	27	2.4
Number of periods > 42 days	0	1	10	2	26

dam that creates conditions for the shipworm to settle and grow. Using test panels placed on the sea floor, Paalvast and Van der Velde (2011) demonstrated that with the flood stream, shipworm larvae could travel 20 km upstream to 0.5 km before the confluence of the Nieuwe Maas and Oude Maas during a period in which the discharge of the Rhine was slightly higher than $1000 \text{ m}^3 \text{ s}^{-1}$. Under the G and W scenarios, the probability of shipworm attacks in the eastern part of the Port of Rotterdam increases slightly compared with the present situation, but the periods with critical discharges are becoming much longer, so the eventual damage to wooden constructions will also increase.

Under the G+ and W+ scenarios, the probability of the risk of shipworm attacks and damage to underwater fir and oak harbor structures in the eastern part of the Port of Rotterdam greatly increases, not only due to a decrease in the repetition time, but also because the periods with a crit-Qbr or lower persist over 2 months on average, which is long enough for the shipworm to reach maturity and to reproduce.

Once settled, these animals are able to continue to grow and thus cause damage, even with a discharge exceeding the crit-Qbr by $200 \text{ m}^3 \text{ s}^{-1}$. When the salinity drops below 9 during the ebb phase, shipworms close their boring tubes using their pallets and reopen them when the salinity conditions become favorable again under flood conditions. If the salinity during both ebb and flood periods remains too low, the animals will survive for 6 weeks before they die.

Under the G+ and W+ scenarios, there are years presenting extreme salinization of the eastern part of the Port of Rotterdam due to long periods with a Qbr of approximately $600 \text{ m}^3 \text{ s}^{-1}$, due to which the oldest harbors of Rotterdam, approximately 1 km upstream from the Rijnhaven, become at risk, which may possibly also affect the historic ships at the quays.

The shipworm will not be able to settle permanently in the eastern part of the Port of Rotterdam because of the large winter and spring discharges that occur at present, and even greater discharges due to climate changes will wash out the brackish water from the harbors for a few months, which is a period that is much too long for the shipworm to survive.

In addition to the eastern part of the Port of Rotterdam, in the shallower old harbors of Maassluis and Vlaardingen, the conditions might become favorable under the G+ and W+ scenarios for the shipworm to settle and grow in the fir piles on which the old quays are built, and if they are not replaced by that time, the mechanical stability of the piles and, consequently, that of the quays will be impaired.

Paalvast and Van der Velde (2011) found an average body length growth rate of 1.5 mm day^{-1} in 2006 and wood consumption of 12.4% of fir wood panels in the polyhaline harbors in the

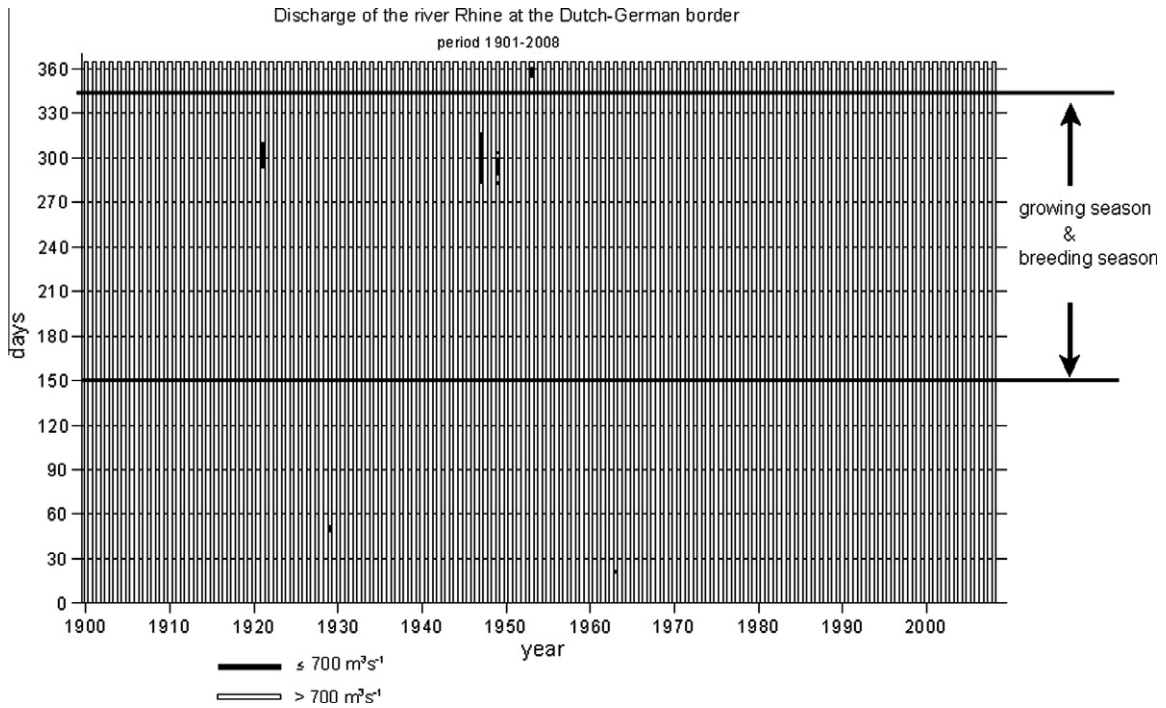


Fig. 6. Periods of discharges of the Rhine river at the Dutch–German border of $\leq 700 \text{ m}^3 \text{ s}^{-1}$ during the period 1901–2008 and their occurrence in the breeding and growing season of the shipworm.

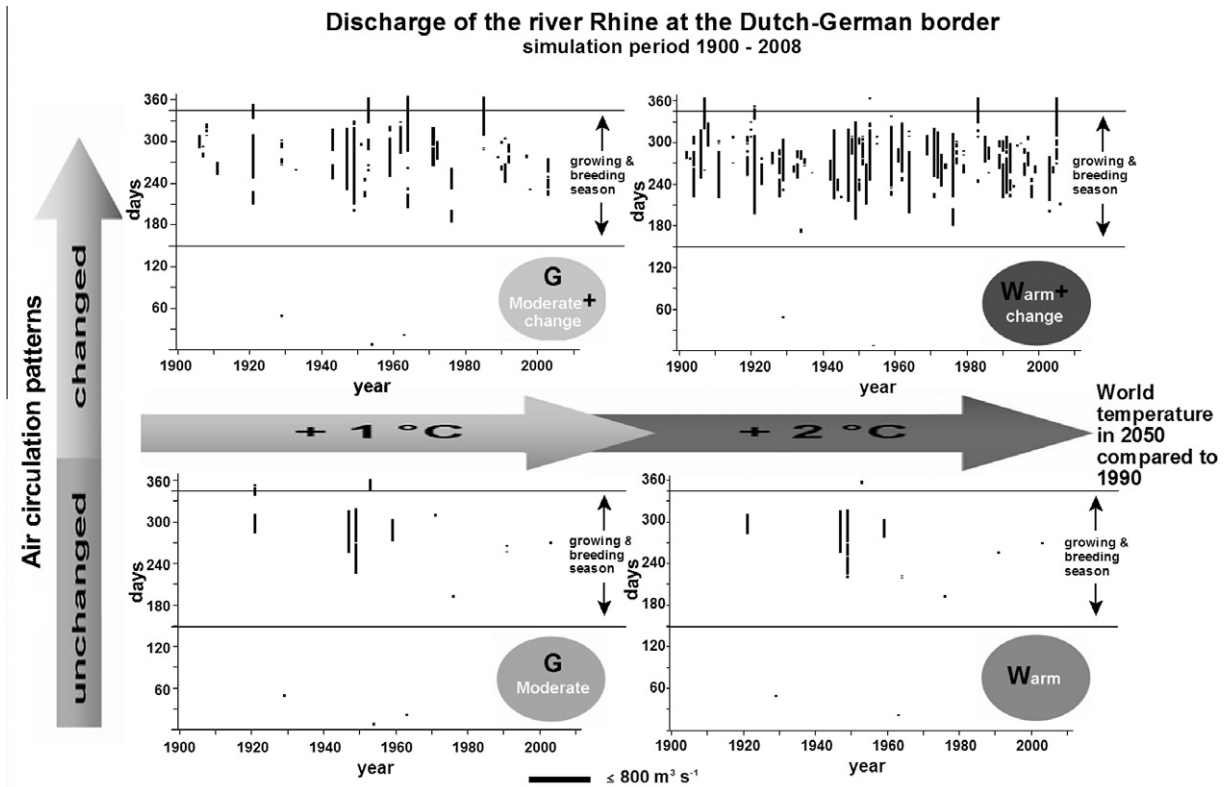


Fig. 7. Simulated periods of discharges of the Rhine river at the Dutch–German border of $\leq 800 \text{ m}^3 \text{ s}^{-1}$ during the period 1901–2008 and their occurrence in the breeding and growing season of the shipworm as a consequence of the KNMI'06 scenarios.

western part of the Port of Rotterdam for first year shipworm individuals in 130 days. The number of shipworm attacks per m^2 was approximately 250. Hoppe (2002) recorded 40,000 larvae per m^2

on wood after one month of exposure. These figures clearly show the potential threat of this species, and therefore, it is not surprising that when shipworms encounter structures made of digestible

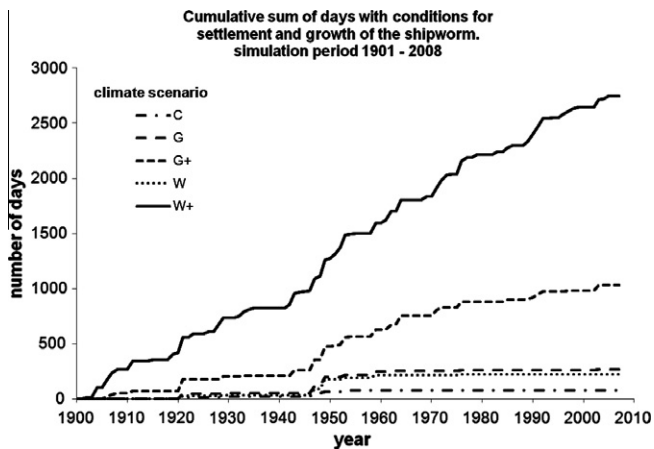


Fig. 8. Cumulative sum of days with potential shipworm damage in the eastern part of the Port of Rotterdam under the prevailing climate conditions (C) and the KNMI'06 scenarios as simulated for the period 1901–2008.

wood into which they can bore, these are ruined in a short period of time. The complete destruction of a US Navy base in the San Francisco Bay over just two years from 1919–1920 serves as a good example of the destructive capabilities of these bivalves (Cohen, 2004). However, not only climate change, but also the improvement of water quality will have an effect on the distribution of the shipworm in estuaries. After the Clean Water Act of 1972, pilings that stood in the Hudson estuary in New York, USA for 100 years began to fall, and more recently, parts of a wooden Brooklyn pier collapsed due to shipworm damage. The city of New York has already spent hundreds of millions of dollars repairing wooden support pilings (Cobb, 2002). Additionally, in the Rotterdam port area, the water and sediment quality has been improved since the 1970's, when pollution was severe. This was due to decreasing the levels of pollutants in the Rhine river as a result of the Rhine Action Plan following the Sandoz accident in 1986 (Admiraal et al., 1993; Bij de Vaate et al., 2006).

Various types of tropical timber (hardwood) were tested over a period of 30 years in the marine waters of the Netherlands (Koninklijk Instituut voor de Tropen, 1972). The results showed that not only the hardness of timber, but also the presence of silica particles and poisonous alkaloids in wood affords considerable protection against shipworm attacks. However, even the most resistant hardwoods showed at least some damage by the shipworm after 30 years of exposure. Additionally, the shipworm lives in the outer 3 cm of hundreds of pilings, fender structures and piers made from driftwood of the hardwood basralokus (*Dicorynia paraensis* Benth.) in the polyhaline harbors of the Port of Rotterdam (Paalvast and Van der Velde, 2011). With a reproductive rate of up to 2 million larvae per individual (Hoppe, 2002) and the ability to travel over large distances through the flood stream, this species is on standby to attack wooden structures upstream once the river discharge decreases and salinity rises.

Furthermore, the increased length of the salinity gradient and, consequently, the extension of the distribution of the shipworm upstream that are predicted within the Rhine–Meuse estuary as a consequence of climate change due to global warming will be similarly manifested in other northwest European estuaries, such as the Elbe, Thames and Loire. The impact of climate change in southern European estuaries will be even stronger under the worst case scenario, W+, as in summer and fall, the decrease in precipitation may reach as much as 80% (Van den Hurk et al., 2006). When salinity drops to levels favorable for the shipworm to settle and grow in places where digestible wooden constructions are located in southern estuaries, these constructions will eventually be attacked by the animal and will be seriously impaired or may collapse.

This study on the effects of global warming due to climate change on the expansion of the distribution of the shipworm upstream in the Rhine–Meuse estuary clearly shows how ecologists can benefit from computer models developed by meteorologists and hydrologists. Despite the limitations and uncertainties that each model has, they are invaluable in providing insight into the ecological impacts of climate change.

5. Conclusion

Climate change with a global increase in temperature of one or two degrees coinciding with a strong change in air circulation that leads to low river discharges in summer and fall will extend salinity gradients upstream in western Europe estuaries and considerably increase the risk of damage to wooden structures by the shipworm in the near future.

Acknowledgements

We thank the Rotterdam Port Authority for financing the use of the SIMONA modeling system.

References

- Admiraal, W., van der Velde, G., Smit, H., Cazemier, W.G., 1992. The rivers Rhine and Meuse in The Netherlands: present state and signs of ecological recovery. *Hydrobiologia* 265, 97–128.
- Beijk, V., 2008. Klimaatverandering en verzilting Modelstudie naar de effecten van de KNMI'06 klimaatscenario's op de verzilting van het noordelijk deltabekken. Rijkswaterstaat Waterdienst Rijkswaterstaat Dienst Zuid-Holland. Rapportnummer: 2008.035.
- Bij de Vaate, A., Breukel, R., van der Velde, G., 2006. Long-term developments in ecological rehabilitation of the main distributaries in the Rhine delta: fish and macroinvertebrates. *Hydrobiologia* 565, 229–242.
- Boé, J., Terray, L., Martin, E., Habets, F., 2009. Projected changes in components of the hydrological cycle in French river basins during the 21st century. *Water Resources Research* 45. Article no. W08420.
- Bol, R., Kraak, A., 1998. MER Beheer Haringvlietsluizen. Over de grens van zout en zoet. Deelrapport Water- en Zoutbeweging. ISBN: 903694871. RWS, notanummer: apv 98/093. 212 pp.
- Cobb, K., 2002. Return of a castaway the gripping story of a boring clam – shipworm. *Science*, News 162, 72.
- Cohen, A.N., 2004. Invasions in the sea. *Park Science* 22, 37–41.
- Cohen, A.N., Carlton, J.T., 1995. Nonindigenous aquatic species in a United States estuary: a case study of the biological invasions of the San Francisco Bay and delta. *NOAA: USA*. 251 pp.
- De Bruyne, R.H., 1994. Schelpen van de Nederlandse kust. Stichting Jeugdbondsuitgeverij, Utrecht, 2e druk, 165 pp.
- Diaz-Nieto, J., Wilby, R.L., 2005. A comparison of statistical downscaling and climate change factor methods: impacts on lowflows in the river Thames United Kingdom. *Climatic Change* 69, 245–268.
- Grave, B.H., 1942. The sexual cycle of the shipworm, *Teredo navalis*. *Biol. Bull.* 82, 438–445.
- Hoagland, K.E., 1986. Effects of temperature, salinity, and substratum on larvae of the shipworms *Teredo bartschi* Clapp and *Teredo navalis* Linnaeus (Bivalvia: Teredinidae). *Am. Malacol.Bull.* 4, 89–99.
- Hoppe, K., 2002. *Teredo navalis* – The cryptogenic shipworm. In: Leppäkoski, E., Gollasch, S., Olenin, S. (Eds.), *Invasive aquatic species of Europe, Distribution impacts and management*. Kluwer, Academic Publishers, The Netherlands.
- Koninklijk Instituut voor de Tropen, 1972. Shipworm experiments during the period 1938–1970. A comparative study of the resistance of tropical timber to shipworm. Communication NO. 62 of the Department of Agricultural Research.
- Kristensen, E., 1969. Attacks by *Teredo navalis* L in inner Danish waters in relation to environmental factors. *Vidensk. Meddr. Dansk naturh. Foren.* 132, 199–210.
- Lane, C.E., 1959. Some aspects of the general biology of *Teredo*, In: Ray, D.L. (Ed.) (1959). *Marine boring and fouling organisms: Symposium*. Friday Harbor Symposia, 137–158.
- Ministry of Transport, Public Works and Water Management, 2008. WAQUA/TRIWAQ – two- and three-dimensional shallow water flow model. Technical documentation, version 3.3, March 2008.
- Nair, N.B., Saraswathy, M., 1971. The biology of wood-boring teredinid molluscs. *Adv. Mar. Biol.* 9, 335–509.
- Norman, E., 1977. The geographical distribution and the growth of the wood-boring molluscs *Teredo navalis* L and *Psiloteredo megotara* (Hanley) and *Xylophaga dorsalis* (Turton) on the Swedish west coast. *Ophelia* 16, 233–250.
- Paalvast, P., van der Velde, G., 2011. Distribution, settlement and growth of first year individuals of the shipworm *Teredo navalis* L (Bivalvia: Teredinidae) in the Port of Rotterdam area, the Netherlands. *Int. Biodet. Biodegr.* 65, 379–388.

- Quayle, D.B., 1992. Marine wood borers in British Columbia. Canadian Special Publication of Fisheries and Aquatic Sciences 115, 1–55.
- Richards, B.R., Hillman, R.E., Maciolek, N.J., 1984. Shipworms. In: Kennish, M.J., Lutz, R.A. (Eds.), Lecture Notes on Coastal and Estuarine Studies - Ecology of Barnegat Bay, New Jersey, Springer-Verlag, New York. pp. 201–225, 396 p.
- Roch, F., 1932. Einige Beobachtungen zur Ökologie und Physiologie von *Teredo navalis* L. Ark. Zool. 24, 1–17.
- Scheltema, R.S., Truitt, R.V., 1956. The shipworm *Teredo navalis* in Maryland coastal waters. Ecology 37, 841–843.
- Sellius, G., 1733. Historia naturalis teridinis seu Xylophagi marini, tubule-conchoideis speciatim belgici cum tabulis ad vivum delineatis. Trajecti ad Rhenum Apud Hermannum Besseling.
- Snow, C.H., 1917. Wood and other organic structural materials. McGraw-Hill book company, New York, London: Hill publishing co., ltd.
- Tuente, U., Piepenburg, D., Spindler, M., 2002. Occurrence and settlement of the common shipworm *Teredo navalis* (Bivalvia: Teredinidae) in Bremerhaven harbours, northern Germany. Helgol. Mar. Res. 56, 87–94.
- Van Benthem Jutting, T., 1943. Mollusca. C. Lamellibranchia.— Fauna van Nederland 12, 1–477.
- Van den Hurk, B., Klein Tank, A., Lenderink, G., van Ulden, A., van Oldenborgh, G.J., Katsman, C., van den Brink, H., Keller, F., Bessembinder, J., Burgers, G., Komen G., Hazeleger, W., Drijfhout, S., 2006. KNMI Climate Change Scenarios 2006 for the Netherlands. KNMI Scientific Report WR 2006-01.
- Van den Hurk, B., Klein Tank, A., Lenderink, G., van Ulden, A., van Oldenborgh, G.J., Katsman, C., van den Brink, H., Keller, F., Bessembinder, J., Burgers, G., Komen, G., Hazeleger, W., Drijfhout, S., 2007. New climate change scenarios for the Netherlands. Water Science & Technology 56, 27–33.
- Van Deursen, W.P.A., 1995. Geographical Information systems and dynamic models. Development and application of a prototype spatial modeling language. PhD-thesis, May 19, 1995. Faculty of Spatial Sciences University of Utrecht, The Netherlands.
- Van Deursen, W.P.A., 2003. Klimaatveranderingen in de stroomgebieden van Rijn en Maas: modelstudies met Rhineflow-3 en Meuseflow-2; Carthago Consultancy, Rotterdam.
- Van Deursen, W.P.A., 2006. Rapportage Rhineflow/Meuseflow. Nieuwe KNMIscenario's 2050. Carthago Consultancy, Rotterdam.
- Vrolijk, W., Harting, P., Storm Buysing, D.J., van Oordt, J.W.L., von Baumhauer, E.H., 1860.— Verslag over den Paalworm, uitgegeven door de Natuurkundige Afdeling der Koninklijke Nederlandsche Akademie van Wetenschappen, Amsterdam, 153 pp.