





Stony Corals and Their Associated Fauna Residing in Marine Lakes under Extreme Environmental Conditions

Leontine E. Becking^{1,2,*}, Stephanie J. Martinez^{1,2}, Ludi Parwadani Aji^{2,3}, Awaludinnoer Ahmad⁴, Adriana Alzate^{1,2}, Mainah Folkers^{1,2}, Dea Fauzia Lestari^{5,6}, Beginer Subhan^{5,6} and Bert W. Hoeksema^{1,7,*}

- ¹ Marine Evolution and Ecology Group, Naturalis Biodiversity Center, P.O. Box 9517, 2300 RA Leiden, The Netherlands; stephanie.martinezhernandez@naturalis.nl (S.J.M.); mainahfolkers@gmail.com (M.F.)
 - ² Department of Animal Sciences, Wageningen University & Research, De Elst 1, 6700 AR Wageningen, The Netherlands; ludi.aji@wur.nl (L.P.A.); adria.alzate@gmail.com (A.A.)
 - ³ Research Center for Oceanography, Indonesian National Research and Innovation Agency (BRIN), Jl. Pasir Putih No. 1, Ancol, Jakarta 14430, Indonesia
 - ⁴ Yayasan Konservasi Alam Nusantara (YKAN), Graha Iskandarsyah 3rd. Fl. Jl. Iskandarsyah Raya No. 66C, Jakarta 12160, Indonesia; awaludinnoer@ykan.or.id
 - ⁵ Department of Marine Science and Technology, Faculty of Fisheries and Marine Science, IPB University, Bogor 16680, Indonesia; dea.fauzia@apps.ipb.ac.id (D.F.L.); beginnersubhan@apps.ipb.ac.id (B.S.)
 - ⁶ Enhancing Marine Biodiversity Research in Indonesia (EMBRIO), IPB University, Bogor 16680, Indonesia
 - ⁷ Groningen Institute for Evolutionary Life Sciences, University of Groningen, P.O. Box 11103, 9700 CC Groningen, The Netherlands
- * Correspondence: lisa.becking@naturalis.nl (L.E.B.); bert.hoeksema@naturalis.nl (B.W.H.)

Abstract: Tropical marine lakes are small land-locked marine waterbodies occurring in karstic coastal areas. During biodiversity surveys in 12 marine lakes in Raja Ampat, Southwest Papua province, Indonesia, we recorded at least 37 species belonging to 29 genera of hard corals. Their observed associated symbiont fauna consisted of bivalve molluscs and polychaete worms. Marine lake temperature ranged from 30.0 to 32.5 °C, acidity from pH 7.6 to 8.1, and salinity from 26.4 to 33.2 ppt. This study provides the first inventory of the marginal coral communities in the extreme habitat of marine lakes, under chronic extreme environmental conditions of higher temperatures, land-based nutrient loads, and sedimentation.

Keywords: extreme habitat; marginal coral communities; environmental limits; anchialine; Raja Ampat; Bird's Head Peninsula; Indonesia



Citation: Becking, L.E.; Martinez, S.J.; Aji, L.P.; Ahmad, A.; Alzate, A.; Folkers, M.; Lestari, D.F.; Subhan, B.; Hoeksema, B.W. Stony Corals and Their Associated Fauna Residing in Marine Lakes under Extreme Environmental Conditions. *Diversity* **2024**, *16*, 295. <https://doi.org/10.3390/d16050295>

Academic Editor: Michael Wink

Received: 14 April 2024

Revised: 2 May 2024

Accepted: 9 May 2024

Published: 13 May 2024



Copyright: © 2024 by the authors. Licensee MDPI, Basel, Switzerland. This article is an open access article distributed under the terms and conditions of the Creative Commons Attribution (CC BY) license (<https://creativecommons.org/licenses/by/4.0/>).

In recent years, there has been heightened interest in corals that live at the edge of their environmental limits as they can provide insights into how coral communities may survive and adapt to future scenarios of the marine environment [1]. Coral-populated extreme environments are considered possible resilience hotspots and climate-change refugia [1–3]. Within this line, marine lakes represent environments with elevated seawater temperatures, lower pH, and natural turbidity [4–6]. These small waterbodies are entirely surrounded by land but have a connection to the adjacent sea through subterranean channels and fissures or porous rock [4]. As such, marine lakes contain saline water and harbour marine species communities [6–9], some of which are anchialine as defined by Holthuis [10]. Marine lakes may contain endemic species of crustaceans [11,12], echinoderms [13,14], sponges [15–17], sea anemone [18,19], and benthic forams [20], some of which were observed to be involved in unique species interactions [18,19].

During biodiversity surveys in 2016, 2020, and 2023 in Raja Ampat, west of Bird's Head Peninsula (Papua, Indonesia), we encountered hard coral species in 12 marine lakes (Figure 1). All marine lakes with coral fauna appeared to have well-developed connections to the sea. These allow frequent flushing of seawater with the adjacent coast and a high influence of terrigenous runoff, resulting in low-visibility waters despite low turbulence.

The temperature across the 12 marine lakes ranged from 30.0 to 32.6 °C (Table 1), while in the nearby reefs it ranged from 29.2 to 30.9 °C. The salinity of the lakes also varied, with some of them representing brackish environments (26.4–29.1 ppt) and others that are only slightly lower in salinity (30.0–33.2 ppt) (Table 1) than coastal reefs (33.5–34.5 ppt).

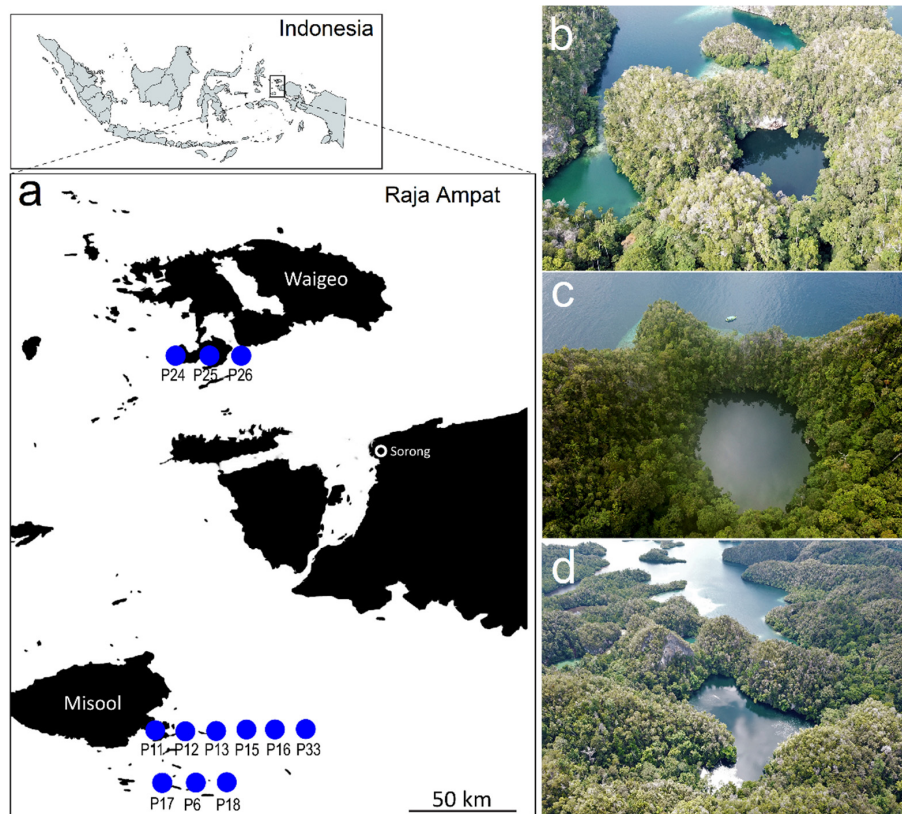


Figure 1. (a) Locations of 12 marine lakes with coral communities in Raja Ampat, Indonesia. (b–d) Aerial images of marine lakes: (b) Papua24, (c) Papua06, and (d) Papua25. See Table 1 for location codes (Photo credits: Christiaan de Leeuw).

Table 1. Environmental characteristics of 12 marine lakes with hard coral fauna in Raja Ampat, Indonesia. Code names for marine lakes follow those of earlier studies [21–23]. Averages (and ranges in brackets) of temperature, salinity, and pH are based on five sites within each marine lake. Measurements were made at 1 m intervals in the depth range that the corals were observed (1–5 m). n.a. = not available.

Marine Lake Code	Temperature (°C)	Salinity (ppt)	pH	Surface Area (m ²)	Maximum Depth (m)	Mangrove Presence
Papua06	31.9 (30.8–32.5)	28.3 (26.7–29.1)	7.9 (7.9–8.0)	2950	12	No
Papua11	30.7 (30.1–31.0)	27.6 (26.4–29)	8.1 (8.0–8.1)	27,300	9	Yes
Papua12	31.2 (30.2–31.8)	32.7 (32.6–32.8)	n.a.	7160	12	Yes
Papua13	30.6 (29.0–31.3)	32.8 (32.7–32.9)	n.a.	2100	3.5	Yes
Papua15	30.6 (30.3–31.2)	30.1 (29.1–30.4)	8.1 (8.0–8.1)	10,300	34	Yes
Papua16	31.2 (31.1–31.6)	30.0 (29.5–30.1)	8.1 (8.0–8.1)	21,100	19	No
Papua17	31.7 (31.1–32.0)	n.a.	n.a.	6500	n.a.	Yes
Papua18	31.5 (29.9–32.6)	28.4 (27.2–29.1)	7.7 (7.6–7.8)	7000	4.5	Yes
Papua24	30.3 (30.0–31.1)	30.7 (30–31.1)	7.9 (7.8–7.9)	4200	6	No
Papua25	31.7 (31.1–32.1)	29.6 (27.2–30)	7.8 (7.7–7.8)	21,500	8.5	Yes
Papua26	30.6 (30.0–31.5)	29.7 (29.1–30.2)	8.1 (8.0–8.1)	16700	4.5	Yes
Papua33	30.4 (30.0–30.6)	33.0 (32.8–33.2)	n.a.	11,700	27	No

The corals were mostly present at a depth range of 0.5–5 m. In four marine lakes (Papua11, Papua12, Papua15, and Papua24) hard corals represented 10–20% of the total benthic cover [23], resembling inshore and turbid reefs in the Indo-Pacific [24–26]. For comparison, the nearby reefs in Raja Ampat can range in coral cover from 10 to 86% [23]. In some marine lakes, the corals formed small reefs (Figures 2d and 3c,d), while in others, corals occurred in patches (Figure 2c). Most corals exhibit massive and encrusting growth forms. In some marine lakes, corals also exhibit foliose and branching growth forms, which contribute to increased structural habitat complexity. In the surveyed marine lakes with mangroves, the corals grow on and in between mangrove roots. Corals growing on mangrove roots is an uncommon feature, although there are reports from coastal areas in the Caribbean, such as in the U.S. Virgin Islands [27,28], Panama [29,30], and Florida [31], and also in the Indo-Pacific, such as the Great Barrier Reef [32,33].

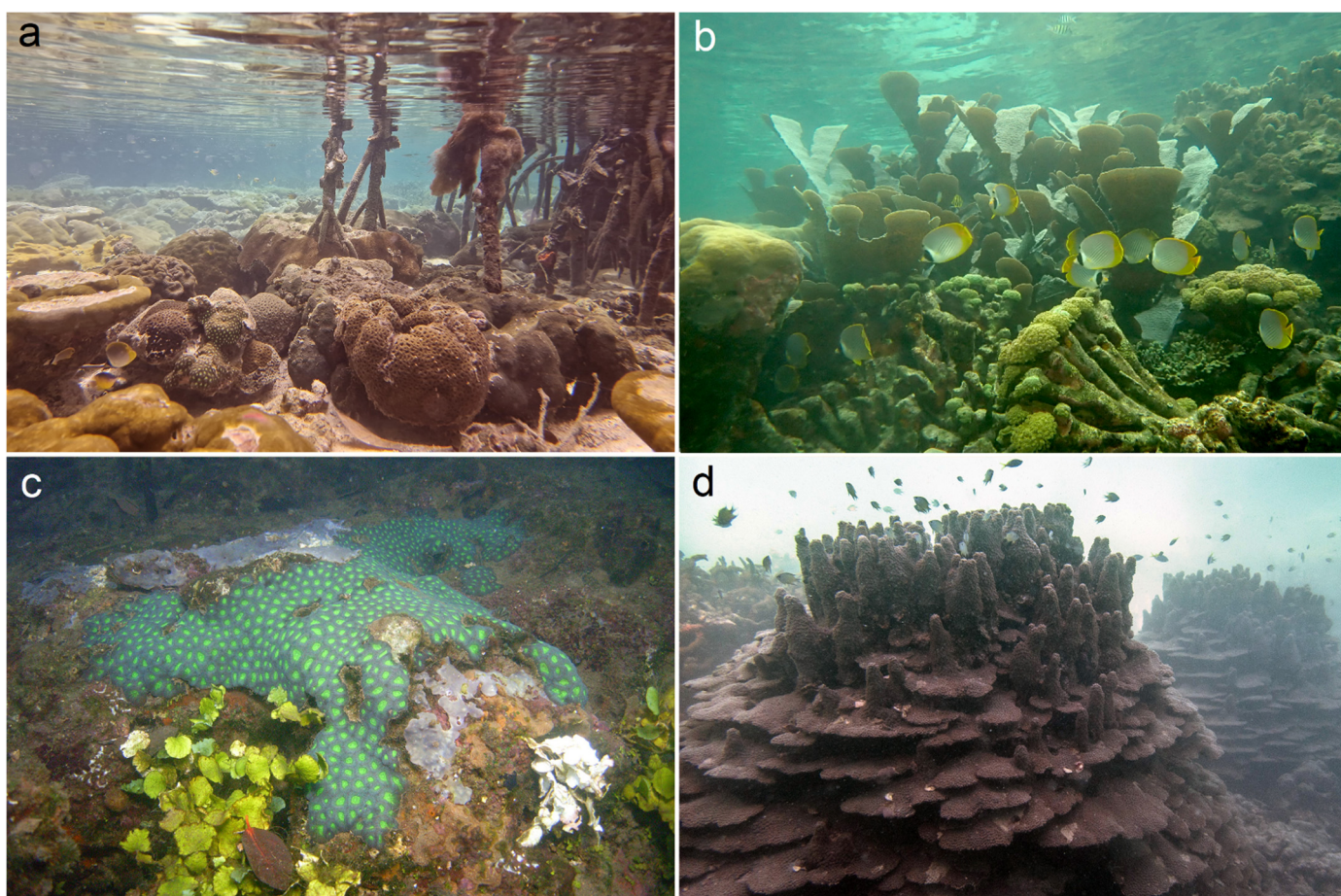


Figure 2. Impressions of coral cover and coral formations at shallow depths in marine lakes: (a) corals growing among and on mangrove roots; (b) foliose and vase-shaped corals as habitats for butterflyfishes in shallow water; (c) encrusting merulinid coral with the grey encrusting sponge *Lamellodysidea herbacea* and the green macroalga *Halimeda* sp.; (d) pillar reef formations of *Galaxea*.

Based on photographic evidence that was taken while snorkelling, 37 stony coral species of 29 genera could be distinguished, belonging to 11 scleractinian families and one hydrozoan family (Table 2; Figures 4 and 5). They were identified with the help of *Corals of the World* [34], updated with the nomenclature of *World List of Scleractinia* [35]. These corals are generally known to be sediment-tolerant, such as those belonging to the genera *Galaxea*, *Goniopora*, *Montipora*, *Pachyseris*, *Pavona*, and *Porites* [36,37]. Most of the species have previously been reported from turbid reef or mangrove environments. For example, shallow-water branching *Acropora* spp., foliose *Montipora* spp., and large massive *Porites*

spp. have been recorded in turbid nearshore coral communities in the Paluma Shoals Reef Complex in the Great Barrier Reef, Australia [26].

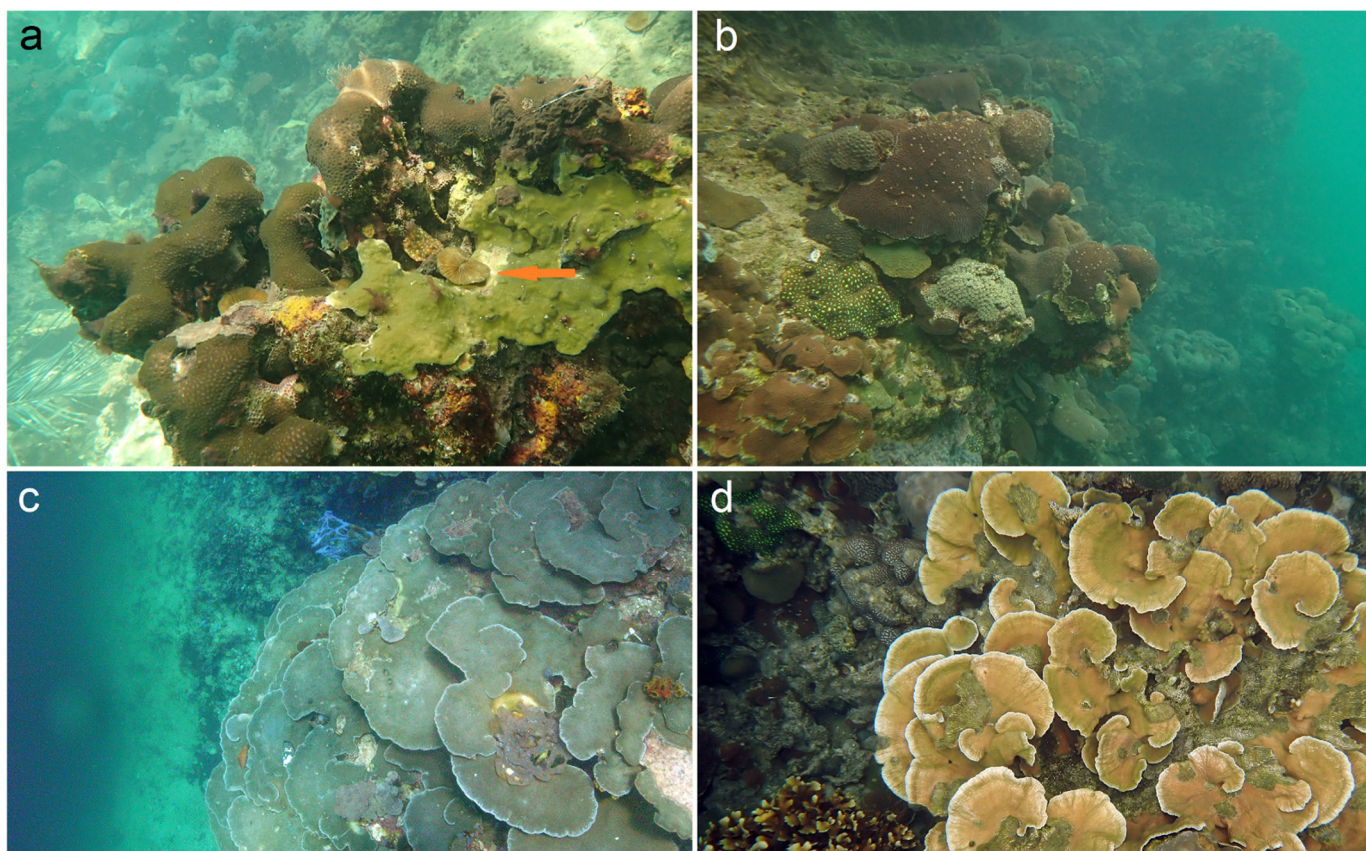


Figure 3. Impressions of coral cover and coral formations on upper reef slopes of marine lakes: (a) massive merulinid coral colonies and an encrusting *Porites* overtopped by a free-living mushroom coral, *Danafungia scruposa* (arrow); (b) encrusting and massive coral colonies; (c) foliose colonies of an unidentified *Montipora* species; (d) foliose colonies of an unidentified *Montipora* species next to a patch of *Pavona cactus*.

Table 2. Coral taxa (Scleractinia and Milleporidae) observed in 12 marine lakes of Raja Ampat, Indonesia (Figure 1).

Family	Species
Acroporidae	<i>Acropora</i> cf. <i>rudis</i> , <i>Montipora</i> spp. (2×)
Agariciidae	<i>Gardineroseris planulata</i> , <i>Pavona cactus</i> , <i>P. decussata</i>
Euphylliidae	<i>Coeloseris mayeri</i> , <i>Euphyllia glabrescens</i> , <i>Galexia astreata</i>
Fungiidae	<i>Danafungia scruposa</i> , <i>Fungia fungites</i> , <i>Heliofungia actiniformis</i> , <i>Lithophyllon repanda</i>
Leptastreidae	<i>Leptastrea</i> sp.
Lobophylliidae	<i>Lobophyllia</i> sp.
Merulinidae	<i>Cyphastrea</i> sp., <i>Dipsastraea</i> spp. (2×), <i>D. rotumana</i> , <i>D. speciosa</i> , <i>Echinopora</i> sp., <i>Favites</i> spp. (2×), <i>Goniastrea</i> sp., <i>Hydnophora rigida</i> , <i>Leptoria phrygia</i> , <i>Oulophyllia crispa</i> , <i>Pectinia paeonia</i>
Milleporidae	<i>Millepora tenera</i>
Pachyseridae	<i>Pachyseris speciosa</i>
Plerogyridae	<i>Plerogyra sinuosa</i>
Pocilloporidae	<i>Pocillopora damicornis</i> , <i>Seriatopora hystrix</i> , <i>Stylophora pistillata</i>
Poritidae	<i>Porites</i> sp., <i>P. cylindrica</i> , <i>P. rus</i>

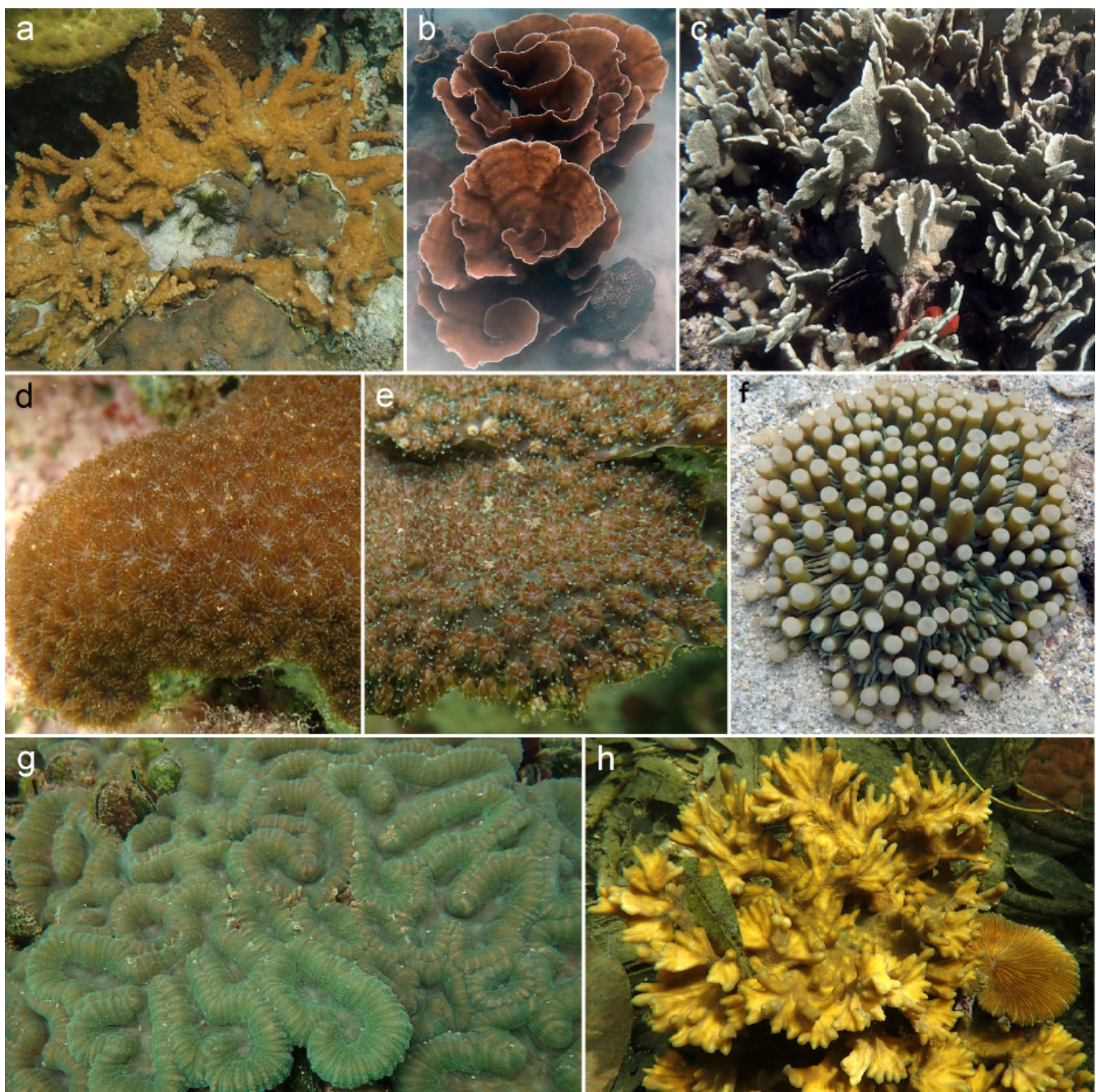


Figure 4. Selection of stony coral species observed in marine lakes: (a) *Acropora* cf. *rudis*, (b) *Montipora* sp., (c) *Pavona decussata*, (d) *Coeloseris mayeri*, (e) *Galaxea astreata*, (f) *Heliofungia actiniformis*, (g) *Lobophyllia* sp., and (h) *Pectinia paeonia*.

Hard corals have been reported in marine lakes before, but little information has been given on the species composition or their diversity. In Palau, which harbours numerous marine lakes, Hamner and Hamner [4] reported the presence of corals in the marine lake Ketau without further specification of species identities, coral cover or coral growth forms. The water in Lake Ketau was isothermal with an average temperature of 29.5 °C, with salinity around 30.5 ppt. Lake Ketau has the general appearance and fauna of the adjacent outside lagoon, with a high diversity of coral-reef fish and many species of corals found in the shallow areas near the islands [4]. Colin [5] reported on coral communities in Palau's Heliofungia Lake and displayed images of a dense cover of free-living *Heliofungia actiniformis*, as well as encrusting corals with large populations of *Septifer* mussels growing

on them, and a foliose coral (*Echinopora lamellosa*) growing on a slope of the lake. In Ha Long Bay (Vietnam), four marine lakes have been reported to have coral, although specific species were not mentioned: Lake Dau Be (with a narrow strip of coral reef distributed sparsely around the lake), Lake Qua Bang (narrow strip of corals), Lake Bui Xam (a belt of massive corals), and Hang Du II Lake (the rocky shores of the lake are partially covered by a belt of corals) [38,39]. In Indonesia, Tomascik and Mah [40] reported the coral *Alveopora tizardi* from the marine Kakaban Lake in East Kalimantan province. However, we did not encounter this species in our surveys. Notably, no other coral species have previously been identified in Indonesian marine lakes.



Figure 5. Selection of stony coral species observed in marine lakes (continued): (a) *Dipsastraea* sp., (b) *Echinopora* sp., (c) *Goniastrea* sp., (d) *Millepora tenera*, (e) *Pachyseris speciosa*, (f) *Plerogyra sinuosa*, (g) *Porites cylindrica*, and (h) *Porites rus*.

It is striking that some corals in marine lakes are associated with high numbers of filter feeders (Figures 6 and 7). Records of coral-associated animals can be relevant because of their role as possible bioindicators [41–44]. Since filter-feeding invertebrates generally appear to be most abundant in relatively shallow, eutrophic water [45], marine lakes could be favourable environments for these organisms.

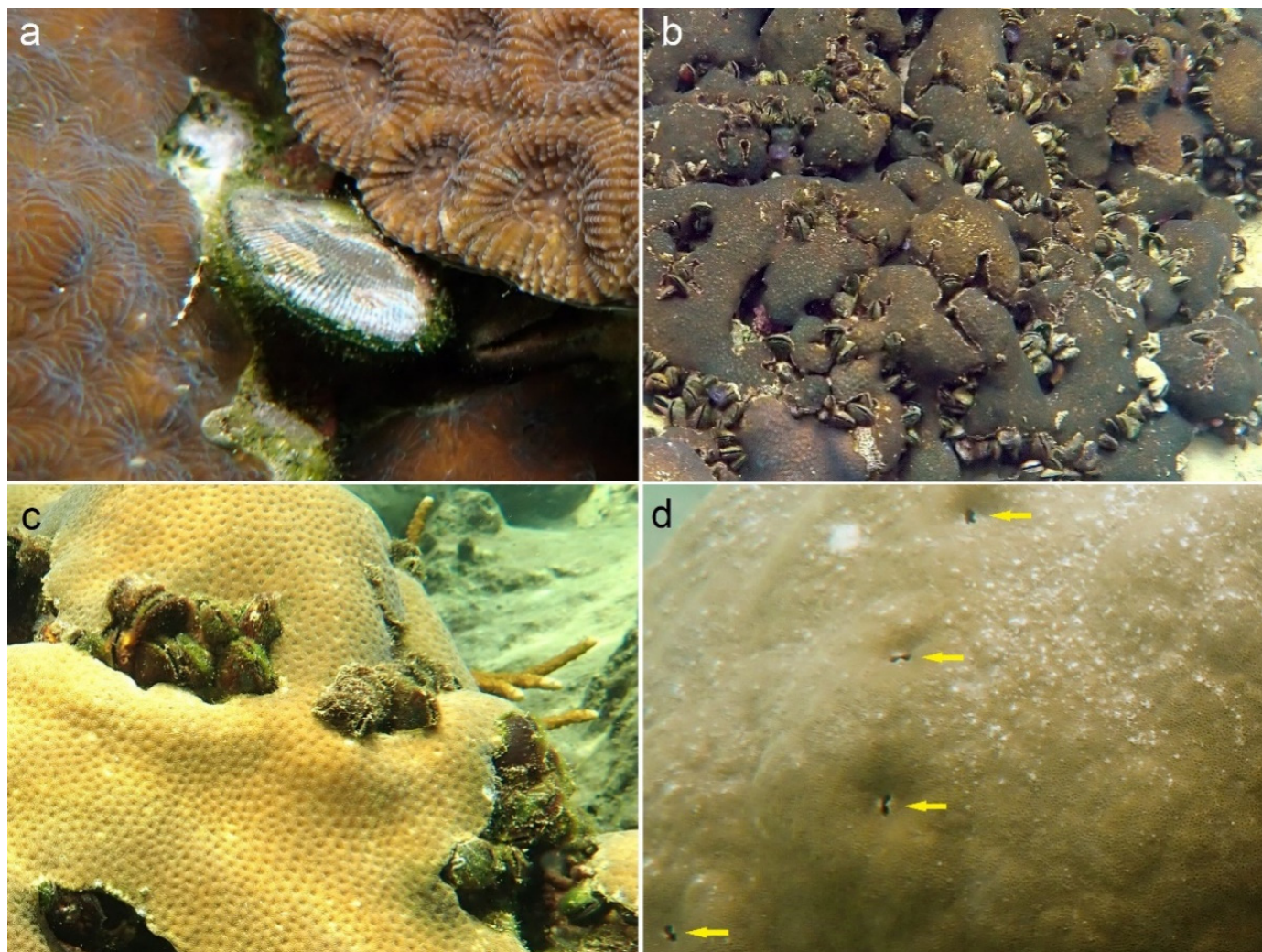


Figure 6. Coral-associated mytilid bivalves: (a) single specimen of *Septifer bilocularis* settled in between two merulinid corals; (b,c) clusters of *S. bilocularis* settled inside crevices and patches of dead surface areas of scleractinian corals; (d) characteristic orifices (arrows) of boring mussels (*Leiosolenes* sp.) in a massive *Porites* colony.

Clusters of the box mussel bivalve, *Septifer bilocularis* (family Mytilidae), were present in high densities over the upper surface of massive coral colonies and inside crevices (Figure 6a–c). Boring mussels of the genus *Leiosolenus* (previously also known as *Lithophaga*) of the same family lived inside massive *Porites* corals, showing their characteristic orifices [46–49] scattered over their host’s surface (Figure 6d). The shell ribs of *Septifer bilocularis* resemble those of *Brachidontes* spp., which were also found to be abundant in the lakes but not in association with corals [22]. Since *S. bilocularis* has also been reported to occur in cryptic upper-sublittoral habitats in dead coral [50], its presence on live coral can perhaps be explained by settlement on small patches of dead surface area of the living host. Interestingly, no bivalves of the genus *Pedum* (family Pectiniidae) were observed,

even though these scallops are commonly observed inside crevices in massive corals on coral reefs across the Indo-West Pacific [51–53], including eastern Indonesia [54,55].

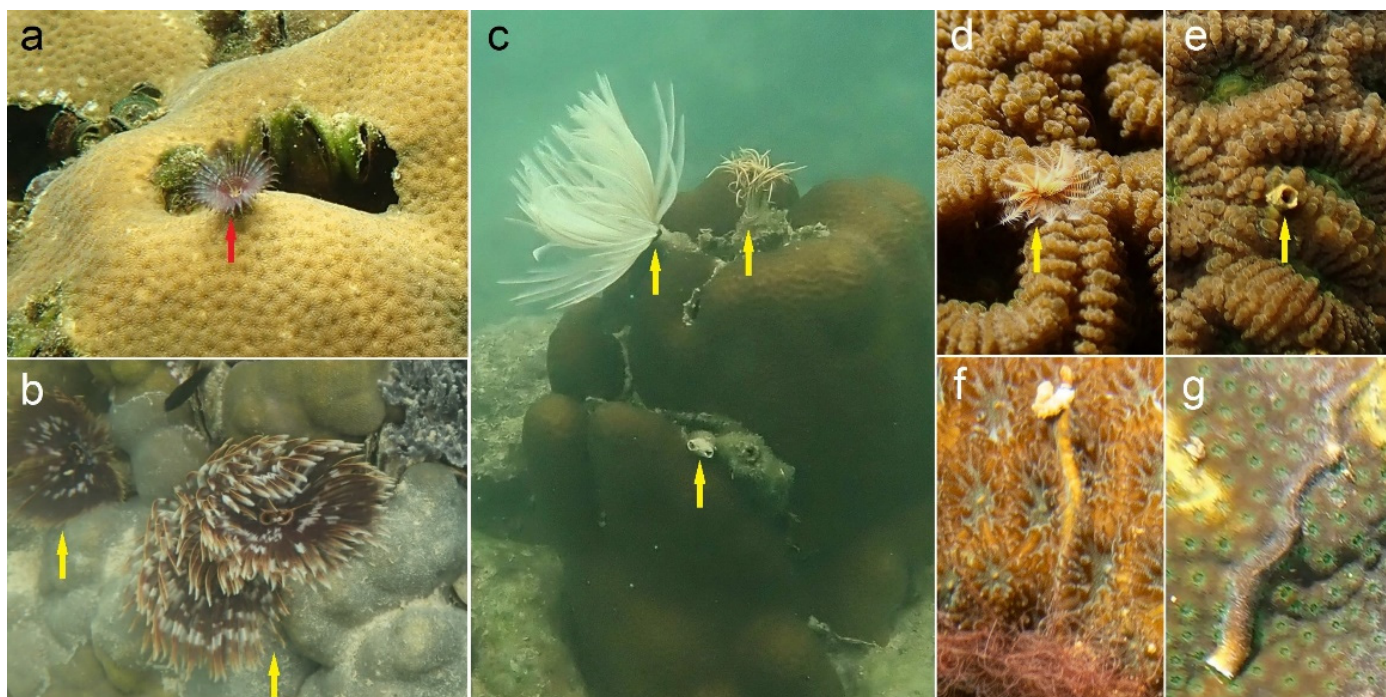


Figure 7. Coral-associated tube worms. Sabellidae: (a) *Acromegalomma* sp. (red arrow); (b,c) colour varieties of *Sabelastarte* sp. (possibly *S. spectabilis*) in massive *Porites* colonies (yellow arrows). Serpulidae: *Floriprotis sabiuraensis* with (d,e) tubes almost entirely implanted in a *Dipsastraea* host coral (yellow arrows), both with extended arioles (d) and retracted (e), and another one (f) showing its tube partially embedded and its ariole partially retracted; (g) tube of an unknown serpulid, possibly *Spirobranchus* sp.

Filter-feeding coral-associated tube worms were less abundant than the mussels in the lakes; they belonged to the polychaete families Sabellidae (Figure 7a–c) and Serpulidae (Figure 7d–g). The Sabellidae, popularly known as feather duster worms, have just recently been discovered to form associations with live corals in both the Indo-Pacific and in the Caribbean, where they may cause damage to their hosts [56,57]. Records of sabellids living on dead corals are more common than on live corals [58–62].

The only serpulid worm that could be identified was *Floriprotis sabiuraensis* (Figure 7d–f), a coral symbiont, which has been reported from various hosts and localities across the Indo-Pacific [49,63–65]. The calcareous tube of an unknown serpulid was found attached to the surface of a massive coral (Figure 7g). It does not show the ring-like structures (peristomes) of *Floriprotis* tubes [64,66] and also not the sharp spike at the tube opening, as seen in most *Spirobranchus* species [67,68]. It could be an individual belonging to the *Spirobranchus tetraceros* species complex, such as in *S. schmardi* [69], which do not always develop such spikes (ten Hove, personal communication).

Boring sponges may also occur in marine lakes and have here only been recorded from limestone rock but not yet from corals [70,71], as those in open-sea reefs [71–74]. Other large, striking coral-associated fauna, such as worm snails [75–77], barnacles, and gall crabs [49,78,79], were also not observed in the marine lakes of Raja Ampat, and should therefore receive more attention in future studies.

In conclusion, the coral communities and their associated fauna that we have found in the marine lakes of Raja Ampat can be classified as extreme and marginal following the framework by Schoepf et al. [1]. The coral communities in marine lakes survive under chronic extreme environmental conditions of higher temperature, land-based nutrient loads,

and sedimentation, and have a species diversity that is lower in comparison to clearwater coastal coral communities. The marine lakes in the current study that contained stony corals had an average temperature of 30.4 °C, which is markedly higher than the average temperatures of 27.9 to 28.5 °C recorded in the reefs of Raja Ampat since 2009 [80–82].

Our study is a first assessment of the stony coral diversity of marine lakes. The list of corals that we present here (Table 2) is a first qualitative compilation based on photographic evidence. Future work will require a systematic documentation of the coral biodiversity, which will likely result in additional species records. Further research will assess to what extent these marine lakes can serve as natural laboratories, where resident coral communities are experiencing conditions of future climate scenarios (high temperature and low pH) combined with local stressors on water quality (e.g., sedimentation and eutrophication).

Author Contributions: Conceptualization, L.E.B. and B.W.H.; investigation, L.E.B., S.J.M., A.A. (Awaludinnoer Ahmad), L.P.A., A.A. (Adriana Alzate), M.F., D.F.L., B.S. and B.W.H.; writing—original draft preparation, L.E.B.; writing—review and editing, L.E.B., S.J.M., A.A. (Awaludinnoer Ahmad), L.P.A., A.A. (Adriana Alzate), M.F., D.F.L., B.S. and B.W.H.; funding acquisition, L.E.B. and L.P.A. All authors have read and agreed to the published version of the manuscript.

Funding: This work was financially supported by the Dutch Research Council (NWO) project VI.Vidi.193.137 for L.E. Becking and by the Endowment Fund for Education (LPDP) Scholarship from the Ministry of Finance of the Republic of Indonesia for L.P. Aji. A. Alzate has received funding from the European Union’s Horizon 2020 research and innovation programme under the Marie Skłodowska-Curie grant agreement No 101061723, from the KNAW Ecology Fund of the Royal Netherlands Academy of Arts and Sciences with a KNAW Ecology Fund Grant (2023045), and from the Treub-Maatschappij (Society for the Advancement of Research in the Tropics).

Acknowledgments: The authors are very grateful to Pak Syafrie (UPTD BLUD), Purwanto (CTC), Lukas Rumetna (YKAN), Fitry Pakiding (UNIPA), Augy Syahailatua (BRIN), Udhi Hernawan (BRIN), Fredinan Yulianda (IPB), Mala Nurilmala (IPB), Christiaan de Leeuw, Diede Maas, Agustin Capriati, Max Ammer, Andi and Marit Miners, Misool Foundation, Raja Ampat Research and Conservation Center (RARCC), Misool Eco Resort, and Papua Diving for assistance during the fieldwork. Research permits were provided by RISTEK in 2016 and 2020, and BRIN in 2023. We are grateful to Maria Ana Tovar-Hernández (Universidad Autónoma de Nuevo León, Mexico) and Harry A. ten Hove (Naturalis Biodiversity Center, The Netherlands) for their assistance in the identification of the tube worms, and Carden Wallace for help with the species identification of the *Acropora* species. We want to thank five anonymous reviewers for their constructive comments, which helped us to improve the manuscript.

Conflicts of Interest: The authors declare no conflicts of interest.

References

- Schoepf, V.; Baumann, J.H.; Barshis, D.J.; Browne, N.K.; Camp, E.F.; Comeau, S.; Cornwell, C.E.; Guzmán, H.M.; Riegl, B.; Rodolfo-Metalpa, R.; et al. Corals at the edge of environmental limits: A new conceptual framework to re-define marginal and extreme coral communities. *Sci. Total Environ.* **2023**, *884*, 163688. [\[CrossRef\]](#)
- Cacciapaglia, C.; van Woesik, R. Climate-change refugia: Shading reef corals by turbidity. *Glob. Chang. Biol.* **2016**, *22*, 1145–1154. [\[CrossRef\]](#)
- Sully, S.; van Woesik, R. Turbid reefs moderate coral bleaching under climate-related temperature stress. *Glob. Chang. Biol.* **2020**, *26*, 1367–1373. [\[CrossRef\]](#)
- Hamner, W.M.; Hamner, P. Stratified marine lakes of Palau (Western Caroline Islands). *Phys. Geogr.* **1998**, *19*, 175–220. [\[CrossRef\]](#)
- Colin, P.L. *Marine Environments of Palau*; Coral Reef Research Foundation: Koror, Palau, 2009; pp. ix, 414.
- Becking, L.E.; Renema, W.; Santodomingo, N.K.; Hoeksema, B.W.; Tuti, Y.; de Voogd, N.J. Recently discovered landlocked basins in Indonesia reveal high habitat diversity in anchialine systems. *Hydrobiologia* **2011**, *677*, 89–105. [\[CrossRef\]](#)
- Tomascik, T.; Mah, A.J. The ecology of “Halimeda lagoon”: An achialine lagoon of a raised atoll, Kakaban Island, East Kalimantan, Indonesia. *Trop. Biodivers.* **1994**, *2*, 385–399.
- Tomascik, T.; Mah, A.J.; Nontji, A.; Moosa, M.K. *The Ecology of the Indonesian Seas*; Periplus: Singapore, 1997.
- Maas, D.L.; Capriati, A.; Ahmad, A.; Erdmann, M.V.; Lamers, M.; de Leeuw, C.A.; Prins, L.; Putri, A.P.; Tapilatu, R.F.; Becking, L.E. Recognizing peripheral ecosystems in marine protected areas: A case study of golden jellyfish lakes in Raja Ampat, Indonesia. *Mar. Pollut. Bull.* **2020**, *151*, 110700. [\[CrossRef\]](#)

10. Holthuis, L.B. Caridean shrimps found in land-locked salt-water pools at four Indo-West Pacific localities (Sinai Peninsula, Funafuti Atoll, Maui and Hawaii Islands), with the description of one new genus and four new species. *Zool. Verh.* **1973**, *128*, 1–48.
11. Ng, P.K.L.; Tomascik, T. *Orcovita saltatrix*, a new genus and species of anchialine varunine crab (Crustacea: Decapoda: Brachyura: Grapsidae) from Kakaban Island, Indonesia. *Raffles Bull. Zool.* **1994**, *42*, 937–948.
12. Franssen, C.H.J.M.; Tomascik, T. *Parhippolyte uveae* Borradaile, 1899 (Crustacea: Decapoda: Hippolytidae) from Kakaban Island, Indonesia. *Zool. Meded.* **1996**, *70*, 227–233.
13. Massin, C.; Tomascik, T. Two new holothurians (Echinodermata: Holothuroidea) from an anchialine lagoon of an uplifted atoll, Kakaban Island, East Kalimantan, Indonesia. *Raffles Bull. Zool.* **1996**, *44*, 157–172.
14. Setiadi, A. A new genus and two new species of sea stars (Family Asterinidae) from Indonesian marine lakes, with notes on habitat and feeding ecology. *Zootaxa* **2019**, *4712*, 392–402. [[CrossRef](#)] [[PubMed](#)]
15. Becking, L.E. Revision of the genus *Placospongia* (Porifera, Demospongiae, Hadromerida, Placospongiidae) in the Indo-West Pacific. *ZooKeys* **2013**, *298*, 39–76. [[CrossRef](#)] [[PubMed](#)]
16. Santodomingo, N.; Becking, L.E. Unravelling the moons: Review of the genera *Paratetilla* and *Cinachyrella* in the Indo-Pacific (Demospongiae, Tetractinellida, Tetillidae). *ZooKeys* **2018**, *791*, 1–46. [[CrossRef](#)] [[PubMed](#)]
17. Calcinai, B.; Cerrano, C.; Núñez-Pons, L.; Pansini, M.; Thung, D.C.; Bertolino, M. A new species of *Spongilla* (Porifera, Demospongiae) from a karst lake in Ha Long Bay (Vietnam). *J. Mar. Sci. Eng.* **2020**, *8*, 1008. [[CrossRef](#)]
18. Fautin, D.G.; Fitt, W.K. A jellyfish-eating sea anemone (Cnidaria, Actiniaria) from Palau: *Entacmaea medusivora* sp. nov. *Hydrobiologia* **1991**, *216*, 453–461. [[CrossRef](#)]
19. Hoeksema, B.W.; Tuti, Y.; Becking, L.E. Mixed medusivory by the sea anemone *Entacmaea medusivora* (Anthozoa: Actiniaria) in Kakaban Lake, Indonesia. *Mar. Biodivers.* **2015**, *45*, 141–142. [[CrossRef](#)]
20. Kawagata, S.; Yamasaki, M.; Jordan, R.W. *Acarotrochus lobulatus*, a new genus and species of shallow-water benthic foraminifer from Mecherchar Jellyfish Lake, Palau, NW equatorial Pacific Ocean. *J. Foram. Res.* **2005**, *35*, 44–49. [[CrossRef](#)]
21. de Leeuw, C.A.; Peijnenburg, K.T.C.A.; Gillespie, R.G.; Maas, D.L.; Hanzawa, N.; Tuti, Y.; Toha, A.H.A.; Aji, L.P.; Becking, L.E. First come, first served: Possible role for priority effects in marine populations under different degrees of dispersal potential. *J. Biogeogr.* **2020**, *47*, 1649–1662. [[CrossRef](#)]
22. Aji, L.P.; Goud, J.; van der Steeg, S.; Tapilatu, R.; Maas, D.L.; Becking, L.E. The diversity of molluscan faunas in marine lakes of Raja Ampat, West Papua, Indonesia. *Contrib. Zool.* **2023**, *92*, 391–430. [[CrossRef](#)]
23. Aji, L.P.; Maas, D.L.; Capriati, A.; Ahmad, A.; de Leeuw, C.; Becking, L.E. Shifts in dominance of benthic communities along a gradient of water temperature and turbidity in tropical coastal ecosystems. *PeerJ* **2024**, *12*, e17132. [[CrossRef](#)]
24. Cleary, D.F.R.; Polónia, A.R.M.; Renema, W.; Hoeksema, B.W.; Wolstenholme, J.; Tuti, Y.; de Voogd, N.J. Coral reefs next to a major conurbation: A study of temporal change (1985–2011) in coral cover and composition in the reefs of Jakarta, Indonesia. *Mar. Ecol. Prog. Ser.* **2014**, *501*, 89–98. [[CrossRef](#)]
25. Cleary, D.F.R.; Polónia, A.R.M.; Renema, W.; Hoeksema, B.W.; Rachello-Dolmen, P.G.; Moolenbeek, R.G.; Budiyanto, A.; Yahmantoro; Tuti, Y.; Draisma, S.G.A.; et al. Variation in the composition of corals, fishes, sponges, echinoderms, ascidians, molluscs, foraminifera and macroalgae across a pronounced in-to-offshore environmental gradient in the Jakarta Bay–Thousand Islands coral reef complex. *Mar. Pollut. Bull.* **2016**, *110*, 701–717. [[CrossRef](#)] [[PubMed](#)]
26. Morgan, K.M.; Perry, C.T.; Smithers, S.G.; Johnson, J.A.; Daniell, J.J. Evidence of extensive reef development and high coral cover in nearshore environments: Implications for understanding coral adaptation in turbid settings. *Sci. Rep.* **2016**, *6*, 29616. [[CrossRef](#)] [[PubMed](#)]
27. Rogers, C.S. A unique coral community in the mangroves of Hurricane Hole, St. John, US Virgin Islands. *Diversity* **2017**, *9*, 29. [[CrossRef](#)]
28. Rogers, C.S. Immediate effects of hurricanes on a diverse coral/mangrove ecosystem in the US Virgin Islands and the potential for recovery. *Diversity* **2019**, *11*, 130. [[CrossRef](#)]
29. Stewart, H.A.; Kline, D.I.; Chapman, L.J.; Altieri, A.H. Caribbean mangrove forests act as coral refugia by reducing light stress and increasing coral richness. *Ecosphere* **2021**, *12*, e03413. [[CrossRef](#)]
30. Stewart, H.A.; Wright, J.L.; Carrigan, M.; Altieri, A.H.; Kline, D.I.; Araújo, R.J. Novel coexisting mangrove-coral habitats: Extensive coral communities located deep within mangrove canopies of Panama, a global classification system and predicted distributions. *PLoS ONE* **2022**, *17*, e0269181. [[CrossRef](#)]
31. Flowers, K.; Golembeski, P.; Ross, B.; Karp, R.F.; Baker, A.C. Visual surveys reveal coral growth in mangrove fringe in a subtropical metropolis. *Bull. Mar. Sci.* **2023**, *99*, 145–146. [[CrossRef](#)]
32. Yates, K.K.; Rogers, C.S.; Herlan, J.J.; Brooks, G.R.; Smiley, N.A.; Larson, R.A. Diverse coral communities in mangrove habitats suggest a novel refuge from climate change. *Biogeosciences* **2014**, *11*, 4321–4337. [[CrossRef](#)]
33. Camp, E.F.; Edmondson, J.; Doheny, A.; Rumney, J.; Grima, A.J.; Huete, A.; Suggett, D.J. Mangrove lagoons of the Great Barrier Reef support coral populations persisting under extreme environmental conditions. *Mar. Ecol. Prog. Ser.* **2019**, *625*, 1–14. [[CrossRef](#)]
34. Veron, J.E.N. *Corals of the World*; Australian Institute of Marine Sciences and CRR Qld Pty Ltd.: Townsville, Australia, 2000.
35. Hoeksema, B.W.; Cairns, S. Word List of Scleractinia. Available online: <https://www.marinespecies.org/scleractinia/> (accessed on 14 March 2024).

36. Zweifel, A.; O'Leary, M.; Morgan, K.; Browne, N.K. Turbid coral reefs: Past, present and future—A review. *Diversity* **2021**, *13*, 251. [[CrossRef](#)]
37. Rosedy, A.; Ives, I.; Waheed, Z.; Hussein, M.A.S.; Sosdian, S.; Johnson, K.; Santodomingo, N. Turbid reefs experience lower coral bleaching effects in NE Borneo (Sabah, Malaysia). *Reg. Stud. Mar. Sci.* **2023**, *68*, 103268. [[CrossRef](#)]
38. Cerrano, C.; Azzini, F.; Bavestrello, G.; Calcinai, B.; Pansini, M.; Sarti, M.; Thung, D.C. Marine lakes of karst islands in the Ha Long Bay (Vietnam). *Chem. Ecol.* **2006**, *22*, 489–500. [[CrossRef](#)]
39. Ngai, N.D.; Thao, D.V.; Thung, D.C.; Thuy, L.T.; Tien, D.D.; Quan, N.V.; Chien, P.V. Biological community in submerged caves and marine lakes in ha Long-Cat Ba Area, Vietnam. *J. Life Sci.* **2015**, *9*, 541–548. [[CrossRef](#)]
40. Tomascik, T.; Mah, A.J. Presence of *Alveopora tizardi* (Scleractinia: Acroporidae) as an epibiont on molluscan shells in an anchialine lake of a raised atoll, Kakaban Island, East Kalimantan, Indonesia: An opportunist or a survivor? *Galaxea J. Coral Reef Stud.* **2023**, *25*, 9–10. [[CrossRef](#)]
41. Risk, M.J.; Heikoop, J.M.; Edinger, E.N.; Erdmann, M.V. The assessment 'toolbox': Community-based reef evaluation methods coupled with geochemical techniques to identify sources of stress. *Bull. Mar. Sci.* **2001**, *69*, 443–458.
42. Fonseca, E.A.C.; Dean, H.K.; Cortés, J. Non-colonial coral macro-borers as indicators of coral reef status in the south Pacific of Costa Rica. *Rev. Biol. Trop.* **2006**, *54*, 101–115. [[CrossRef](#)]
43. Scaps, P.; Denis, V. Can organisms associated with live scleractinian corals be used as indicators of coral reef status? *Atoll Res. Bull.* **2008**, *566*, 1–21. [[CrossRef](#)]
44. Lymperaki, M.M.; Hill, C.E.; Hoeksema, B.W. The effects of wave exposure and host cover on coral-associated fauna of a centuries-old artificial reef in the Caribbean. *Ecol. Eng.* **2022**, *176*, 106536. [[CrossRef](#)]
45. van der Schoot, R.J.; Hoeksema, B.W. Abundance of coral-associated fauna in relation to depth and eutrophication along the leeward side of Curaçao, southern Caribbean. *Mar. Environ. Res.* **2022**, *181*, 105738. [[CrossRef](#)] [[PubMed](#)]
46. Kleemann, K.H. Boring bivalves and their host corals from the Great Barrier Reef. *J. Molluscan Stud.* **1980**, *46*, 13–54. [[CrossRef](#)]
47. Wong, K.T.; Tsang, R.H.L.; Ang, P. Did borers make corals more susceptible to a catastrophic disease outbreak in Hong Kong? *Mar. Biodivers.* **2016**, *46*, 325–326. [[CrossRef](#)]
48. Hoeksema, B.W.; Smith-Moorhouse, A.; Harper, C.E.; van der Schoot, R.J.; Timmerman, R.F.; Spaargaren, R.; Langdon-Down, S.J. Black mantle tissue of endolithic mussels (*Leiosolenus* spp.) is cloaking borehole orifices in Caribbean reef corals. *Diversity* **2022**, *14*, 401. [[CrossRef](#)]
49. van der Schoot, R.J.; Hoeksema, B.W. Host specificity of coral-associated fauna and its relevance for coral reef biodiversity. *Int. J. Parasitol.* **2024**, *54*, 65–88. [[CrossRef](#)] [[PubMed](#)]
50. Arnaud, P.M.; Thomassin, B.A. Habits and morphological adaptations of mytilids (Mollusca: Bivalvia) from coastal and reefal environments in southwest Malagasia (Indian Ocean). In *The Bivalvia—Proceedings of a Memorial Symposium in Honour of Sir Charles Maurice Yonge, Edinburgh, 1986*; Morton, B., Ed.; Hong Kong University Press: Hong Kong, China, 1990; pp. 333–344.
51. Kleemann, K. The pectinid bivalve *Pedum spondyloideum* (Gmelin 1791): Amount of surface and volume occupied in host corals from the Red Sea. *Mar. Ecol.* **2001**, *22*, 111–133. [[CrossRef](#)]
52. Chan, B.K.; Tan, J.C.; Ganmanee, M. Living in a growing host: Growth pattern and dwelling formation of the scallop *Pedum spondyloideum* in massive *Porites* spp. corals. *Mar. Biol.* **2020**, *167*, 95. [[CrossRef](#)]
53. Scaps, P. Association between the scallop *Pedum spondyloideum* (Bivalvia: Pteriomorpha: Pectinidae) and scleractinian corals from Nosy Be, Madagascar. *Cah. Biol. Mar.* **2020**, *61*, 73–80. [[CrossRef](#)]
54. Scaps, P.; Denis, V.; Berhimon, S.; Kaligis, F. Coral associations and space competitors of *Pedum spondyloideum* (Gmelin, 1791) (Bivalvia, Pteriomorpha: Pectiniidae) from the northeast coast of Sulawesi. *Basteria* **2005**, *69*, 157–166.
55. Scaps, P.; Denis, V. Association between the scallop, *Pedum spondyloideum*, (Bivalvia: Pteriomorpha: Pectinidae) and scleractinian corals from the Wakatobi Marine National Park (Southeastern Sulawesi, Indonesia). *Raffles Bull. Zool.* **2007**, *55*, 371–380.
56. Tovar-Hernández, M.A.A.; García-Garza, M.E.; de León-González, J.A. Sclerozoan and fouling sabellid worms (Annelida: Sabellidae) from Mexico with the establishment of two new species. *Biodivers. Data J.* **2020**, *8*, e57471. [[CrossRef](#)] [[PubMed](#)]
57. Hoeksema, B.W.; Timmerman, R.F.; Spaargaren, R.; Smith-Moorhouse, A.; van der Schoot, R.J.; Langdon-Down, S.J.; Harper, C. Morphological modifications and injuries of corals caused by feather duster worms (Sabellidae: *Anamobaea* sp.) in the Caribbean. *Diversity* **2022**, *14*, 332. [[CrossRef](#)]
58. Capa, M.; López, E. Sabellidae (Annelida: Polychaeta) living in blocks of dead coral in the Coiba National Park, Panamá. *J. Mar. Biol. Assoc. UK* **2004**, *84*, 63–72. [[CrossRef](#)]
59. Capa, M.; Murray, A. A taxonomic guide to the fanworms (Sabellidae, Annelida) of Lizard Island, Great Barrier Reef, Australia, including new species and new records. *Zootaxa* **2015**, *4019*, 98–167. [[CrossRef](#)] [[PubMed](#)]
60. Tovar-Hernández, M.A.; ten Hove, H.A.; Vinn, O.; Zatoñ, M.; de León-González, J.A.; García-Garza, M.E. Fan worms (Annelida: Sabellidae) from Indonesia collected by the Snellius II Expedition (1984) with descriptions of three new species and tube microstructure. *PeerJ* **2020**, *8*, e9692. [[CrossRef](#)] [[PubMed](#)]
61. Capa, M.; Kupriyanova, E.; Nogueira, J.M.d.M.; Bick, A.; Tovar-Hernández, M.A. Fanworms: Yesterday, today and tomorrow. *Diversity* **2021**, *13*, 130. [[CrossRef](#)]
62. Veeraiyan, B.; Tovar-Hernández, M.A.; Palanivel, P.S.; Palanisamy, S.; Perumal, M. New records of sclerozoan fan worms in *Acropora* sp. from the Gulf of Mannar, south-eastern coast of India (Annelida: Sabellidae). *J. Nat. Hist.* **2022**, *56*, 1365–1381. [[CrossRef](#)]

63. Nishi, E. Serpulid polychaetes associated with living and dead corals at Okinawa Island, Southwest Japan. *Publ. Seto Mar. Biol. Lab.* **1996**, *36*, 305–318. [[CrossRef](#)]
64. ten Hove, H.A.; Kupriyanova, E.K. Taxonomy of Serpulidae (Annelida, Polychaeta): The state of affairs. *Zootaxa* **2009**, *2036*, 1–126. [[CrossRef](#)]
65. Kupriyanova, E.; ten Hove, H.A.; Rouse, G.W. Phylogeny of Serpulidae (Annelida, Polychaeta) inferred from morphology and DNA sequences, with a new classification. *Diversity* **2023**, *15*, 398. [[CrossRef](#)]
66. Humann, P.; Deloach, N. *Reef Creature Identification: Tropical Pacific*, 1st ed.; New World Publications: Jacksonville, FL, USA, 2017; pp. 1–497.
67. Perry, O.; Bronstein, O.; Simon-Blecher, N.; Atkins, A.; Kupriyanova, E.; ten Hove, H.; Levy, O.; Fine, M. On the genus *Spirobranchus* (Annelida, Serpulidae) from the northern Red Sea, and a description of a new species. *Invertebr. Syst.* **2018**, *32*, 605–626. [[CrossRef](#)]
68. Kupriyanova, E.K.; Flaxman, B.; Burghardt, I. A puzzle no more: The identity of *Spirobranchus tetraceros* (Schmarda, 1861) (Annelida, Serpulidae) is revealed. *Rec. Aust. Mus.* **2022**, *74*, 201–214. [[CrossRef](#)]
69. Hoeksema, B.W.; Wels, D.; van der Schoot, R.J.; ten Hove, H.A. Coral injuries caused by *Spirobranchus* opercula with and without epibiotic turf algae at Curaçao. *Mar. Biol.* **2019**, *166*, 60. [[CrossRef](#)]
70. Azzini, F.; Calcinai, B.; Cerrano, C.; Bavestrello, G.; Pansini, M. Sponges of the marine karst lakes and of the coast of the islands of Ha Long Bay (North Vietnam). In *Porifera Research: Biodiversity, Innovation and Sustainability*; Série Livros 28; Custodia, M.R., Lobo-Hajdu, G., Hajdu, E., Muricy, G., Eds.; Museu Nacional: Rio de Janeiro, Brazil, 2007; pp. 157–164.
71. Becking, L.E.; Cleary, D.F.R.; de Voogd, N.J. Sponge species composition, abundance, and cover in marine lakes and coastal mangroves in Berau, Indonesia. *Mar. Ecol. Prog. Ser.* **2013**, *481*, 105–120. [[CrossRef](#)]
72. Ward, P.; Risk, M.J. Boring pattern of the sponge *Cliona vermifera* in the coral *Montastrea annularis*. *J. Paleontol.* **1977**, *51*, 520–526.
73. Schönberg, C.H.L.; Wilkinson, C.R. Induced colonization of corals by a clionid bioeroding sponge. *Coral Reefs* **2001**, *20*, 69–76. [[CrossRef](#)]
74. de Bakker, D.M.; Webb, A.E.; van den Bogaart, L.A.; van Heuven, S.M.A.C.; Meesters, E.H.; van Duyl, F.C. Quantification of chemical and mechanical bioerosion rates of six Caribbean excavating sponge species found on the coral reefs of Curaçao. *PLoS ONE* **2018**, *13*, e0197824. [[CrossRef](#)] [[PubMed](#)]
75. Adhavan, D.; Prakash, S.; Kumar, A. Tube dwelling gastropod an indicator of coral reef status at the tropical reef of Palk Bay region, southeast coast of India. *Ind. J. Geo Mar. Sci.* **2021**, *50*, 585–587.
76. Hoeksema, B.W.; Harper, C.E.; Langdon-Down, S.J.; van der Schoot, R.J.; Smith-Moorhouse, A.; Spaargaren, R.; Timmerman, R.F. Host range of the coral-associated worm snail *Petalococonchus* sp. (Gastropoda: Vermetidae), a newly discovered cryptogenic pest species in the southern Caribbean. *Diversity* **2022**, *14*, 196. [[CrossRef](#)]
77. Bieler, R.; Collins, T.M.; Golding, R.; Granados-Cifuentes, C.; Healy, J.M.; Rawlings, T.A.; Sierwald, P. Replacing mechanical protection with colorful faces twice: Parallel evolution of the non-operculate marine worm-snail genera *Thylacodes* (Guettard, 1770) and *Cayo* n. gen. (Gastropoda: Vermetidae). *PeerJ* **2023**, *11*, e15854. [[CrossRef](#)]
78. Chan, B.K.K.; Wong, K.J.H.; Cheng, Y.R. Biogeography and host usage of coral-associated crustaceans: Barnacles, copepods, and gall crabs as model organisms. In *The Natural History of the Crustacea: Evolution and Biogeography of the Crustacea*; Thiel, M., Poore, G.C., Eds.; Oxford University Press: Oxford, UK, 2020; Volume 8, pp. 183–215.
79. Vimercati, S.; Terraneo, T.I.; Marchese, F.; Eweida, A.A.; Rodrigue, M.; Pieribone, V.; Benzoni, F. Diversity and distribution of coral gall crabs associated with Red Sea mesophotic corals. *Front. Mar. Sci.* **2024**, *11*, 1305396. [[CrossRef](#)]
80. Purwanto, M.; Wilson, J.; Ardiwijaya, R.; Mangubhai, S. *Coral Reef Monitoring in Kofiau and Boo Islands Marine Protected Area, Raja Ampat, West Papua, 2009–2011*; Report 6/12; The Nature Conservancy, Indo-Pacific Division: Jakarta, Indonesia, 2012; pp. xiii, 43.
81. Nugraha, A.P.; Purba, N.P.; Sunarto, J. Ocean currents, temperature, and salinity at Raja Ampat islands and the boundaries seas. *World Sci. News* **2018**, *110*, 197–209.
82. Patty, S.I.; Rizqi, M.P.; Huwae, R.; Kainama, F. Water quality status of Raja Ampat Island Natural Marine Reserve based on the seawater physical parameters. *Jurnal Ilmiah PLATAX* **2020**, *8*, 95–101. [[CrossRef](#)]

Disclaimer/Publisher’s Note: The statements, opinions and data contained in all publications are solely those of the individual author(s) and contributor(s) and not of MDPI and/or the editor(s). MDPI and/or the editor(s) disclaim responsibility for any injury to people or property resulting from any ideas, methods, instructions or products referred to in the content.