

Geo(im)pulse

Cite this article: Reumer JWF and Schinkel A. A distant traveller: a Late Jurassic nerineoid gastropod (Mollusca, Heterobranchia) on the Maasvlakte 2 beach, the Netherlands.

Netherlands Journal of Geosciences, Volume 103, e9. <https://doi.org/10.1017/njg.2024.8>

Received: 10 March 2024

Revised: 4 April 2024

Accepted: 5 April 2024

Keywords:

Late Jurassic; Maasvlakte 2; Meuse; Nerineoidea; Paris Basin; *Ptygmatis*

Corresponding author:

Jelle W. F. Reumer; Email: j.w.f.reumer@uu.nl

A distant traveller: a Late Jurassic nerineoid gastropod (Mollusca, Heterobranchia) on the Maasvlakte 2 beach, the Netherlands

Jelle W.F. Reumer^{1,2,3}  and Anders Schinkel^{4,5} 

¹Natuurhistorisch Museum Rotterdam, Westzeedijk 345, 3001 KL Rotterdam, the Netherlands; ²Faculty of Geosciences, Utrecht University, Utrecht, the Netherlands; ³Naturalis Biodiversity Center, Leiden, the Netherlands; ⁴Citroenggaard 20, 3206 AJ Spijkenisse, the Netherlands and ⁵Faculty of Behavioural and Movement Sciences, Vrije Universiteit, Amsterdam, the Netherlands

Abstract

A fragmentary nerineoid gastropod collected from the Maasvlakte 2 beach may be identified as *Ptygmatis* cf. *bruntrutana* (Thurmann, 1832). Probably originating from Upper Jurassic strata in north-eastern France, it must have been transported here by a forerunner of the River Meuse (Maas).

Introduction

During his regular beach-combing surveys, on the lookout for Quaternary vertebrate fossils along the coast of the so-called Second Maasvlakte (Maasvlakte 2 or MV2, near Rotterdam, the Netherlands), the second author has recently come across an egg- or pebble-like object containing a peculiar structure revealed through a hole on one side. This structure was subsequently recognised by the first author as the internal cast of a few whorls of a nerineoid gastropod. In view of the fact that this does not rank amongst the commoner fossil types found on MV2, it raised two questions: (a) what is the taxonomic identity of the fossil? And (b) what could be its provenance? Here, we shall briefly describe the fossil and try to elucidate its identity and origin.

Description

The fossil (Fig. 1), contained in the collection of the Natural History Museum Rotterdam (registration number NMR993000214645), is an ovoid pebble of silicified limestone, with a length of 36 mm and a central width of 21 mm. On one side it is open along about three-quarters of its length, revealing an internal structure showing the natural casts of the sediment infill of several whorls of a nerineoid gastropod. Two of these whorls are complete and reveal the characteristic irregular shape of a nerineoid internal aperture with folds and ridges (so-called plaits). Centrally located is the mould of the columellar cavity.

The Nerineoidea Zittel, 1873, is a superfamily of heterobranch gastropods, mostly with a long and pointed, turritelliform shell, consisting of many whorls. Some of the (sub)families (e.g. Ceritellidae Wenz, 1840; Cryptoplocinae Pchelintsev, 1960; Nerineidae Zittel, 1873; Itieriidae Cossmann, 1896) within this superfamily may have oviform or even oval shells (Kollmann, 2014). The internal tube or aperture does not have a circular or oval circumference, as in other gastropods, but is characterised by longitudinal internal protrusions, called ridges or plaits. Based on the position of these plaits, columellar (protruding from the central axis or columella), parietal (protruding from the apical side of the tube) or palatal plaits (protruding from the external wall of the shell) may be distinguished (see Fig. 2). The result is a characteristic configuration of the tube when seen in longitudinal section; this configuration can be used in taxonomic assignment.

Within the superfamily Nerineoidea, a total of seven families can be differentiated on the basis of shell shape and the number and position of plaits (Kollmann, 2014). Members of the family Ptygmatididae Pchelintsev, 1960, are characterised by two columellar plaits, in addition to a parietal and a palatal plait (Kollmann, 2014). Representatives of the family Nerineidae possess 1–3 columellar plaits, one parietal and one palatal plait (Kollmann, 2014). Our specimen (Fig. 1) has two columellar plaits, a parietal plait and one large and one small palatal plait, so in theory it could belong to either one of these two subfamilies. The configuration seen in our fossil is identical to that observed in a specimen assigned to *Ptygmatis bruntrutana* (Thurmann, 1832) from the Kimmeridgian of Alanquer, Portugal, and illustrated by Kollmann (2014, fig. 3I). Therefore, we identify our specimen, albeit with caution, as *Ptygmatis* cf. *bruntrutana*. Dr H. Kollmann (pers. comm., March 1, 2024) confirmed this conclusion.

© The Author(s), 2024. Published by Cambridge University Press on behalf of the Netherlands Journal of Geosciences Foundation. This is an Open Access article, distributed under the terms of the Creative Commons Attribution licence (<http://creativecommons.org/licenses/by/4.0/>), which permits unrestricted re-use, distribution and reproduction, provided the original article is properly cited.



Figure 1 Fragment of the nerineoid gastropod *Ptygmatis* cf. *bruntrutana* (Thurmann, 1832) (NMR993000214645) from dredged sand on the Maasvlakte 2 beach. Scale bar equals 10 mm.

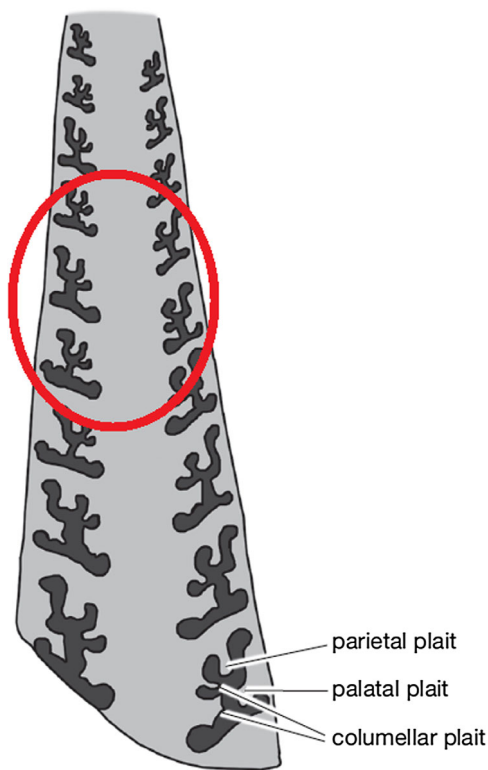


Figure 2 Schematic longitudinal section of a nerineoid shell, with terminology of internal plaits. The red oval shows the approximate portion of shell preserved in the Maasvlakte 2 fossil (see Fig. 1). After Kollmann (2014).

The age of the MV2 fossil is most probably early to middle Oxfordian (Late Jurassic), but a Kimmeridgian age cannot be excluded (Fischer, 2016, p. 200).

Provenance

In order to explain the presence of a Late Jurassic gastropod in sandy sediments of the North Sea Basin, the only plausible line of reasoning leads to transport by the River Meuse (Maas). The piece itself appears to be a pebble rounded due to prolonged fluvial transport, its size of 36 mm corresponding to the size category 'very coarse pebble' (between 32.0 and 64.0 mm) of the USGS Wentworth grain size chart (Wentworth, 1922; Williams et al., 2006). The River Meuse originates on the Plateau de Langres near the hamlet of Pouilly-en-Bassigny (Département Haute-Marne, France) and then flows northwards along the eastern margin of the Paris Basin. Between Neufchâteau in the south and Stenay in the north (Fig. 3, two red stars), it continues through a relatively narrow valley, traversing Upper Jurassic sedimentary rocks (Bosch, 1992).

In the literature, additional examples of Jurassic fossils of French provenance redeposited by the river Meuse in the Netherlands can be found. Jagt & Reumer (2010) described the case of a Jurassic echinoderm, a fragment of the Sinemurian crinoid *Isocrinus* (*Chladocrinus*) *tuberculatus* (Miller, 1821) collected from the Oosterschelde estuary (province of Zeeland). They proposed three possible explanations for its provenance, as follows: (1) transportation by the River (Proto-)Meuse; (2) erosion out of a boulder used for coastal reinforcement or other building material, and (3) transportation across the North Sea from Jurassic strata along the coast of southern or eastern England. Jagt & Reumer (2010) ruled out the latter two possibilities and concluded that the crinoid fragment must have been transported and deposited by the River (Proto-)Meuse.

Jagt et al. (2015) reported a Late Jurassic (probably Oxfordian) sea-urchin *Hemicidaris* aff. *intermedia* (Fleming, 1828) with an associated nerineoid from the Wessem area, province of Limburg, and suggested Upper Jurassic strata between Neufchâteau and Stenay as its provenance area. Earlier, Van der Lijn (1974) had mentioned the find of a silicified *Nerinea* near Rothem (province of Limburg).

The present nerineoid fragment was not found in the Oosterschelde estuary or along the river itself, but instead on the beach of the artificially constructed Maasvlakte 2. During the first decade of this century, the Port of Rotterdam Authorities enlarged the Rotterdam harbour with about 2,000 hectares by construction of a land reclamation area extending into the North Sea. For this so-called Maasvlakte 2 (MV2), sand was dredged by trailing suction-hopper dredgers from a borrow area some 15 km west of the coastline of the First Maasvlakte (MV1) that had been constructed previously. Sediments were transported and subsequently deposited by 'rainbowing' or by pumping it ashore through pipelines. The borrow area where the sand has been dredged originally had a depth of minus 22–23 m Chart Datum (CD) and the existing seabed is lowered to an average depth of minus 40 m CD. The dredged sediments are of Late Pleistocene age and are known for their rich content of terrestrial and marine mammals, birds and molluscs (e.g. Mol et al., 2006, 2015; Kuitens et al., 2015; Langeveld, 2020).

The sediment fill of the North Sea Basin originated from four major river systems: the now inactive Eridanos (Overeem et al., 2001) draining the Baltic region, and the rivers Rhine (Rijn), Meuse

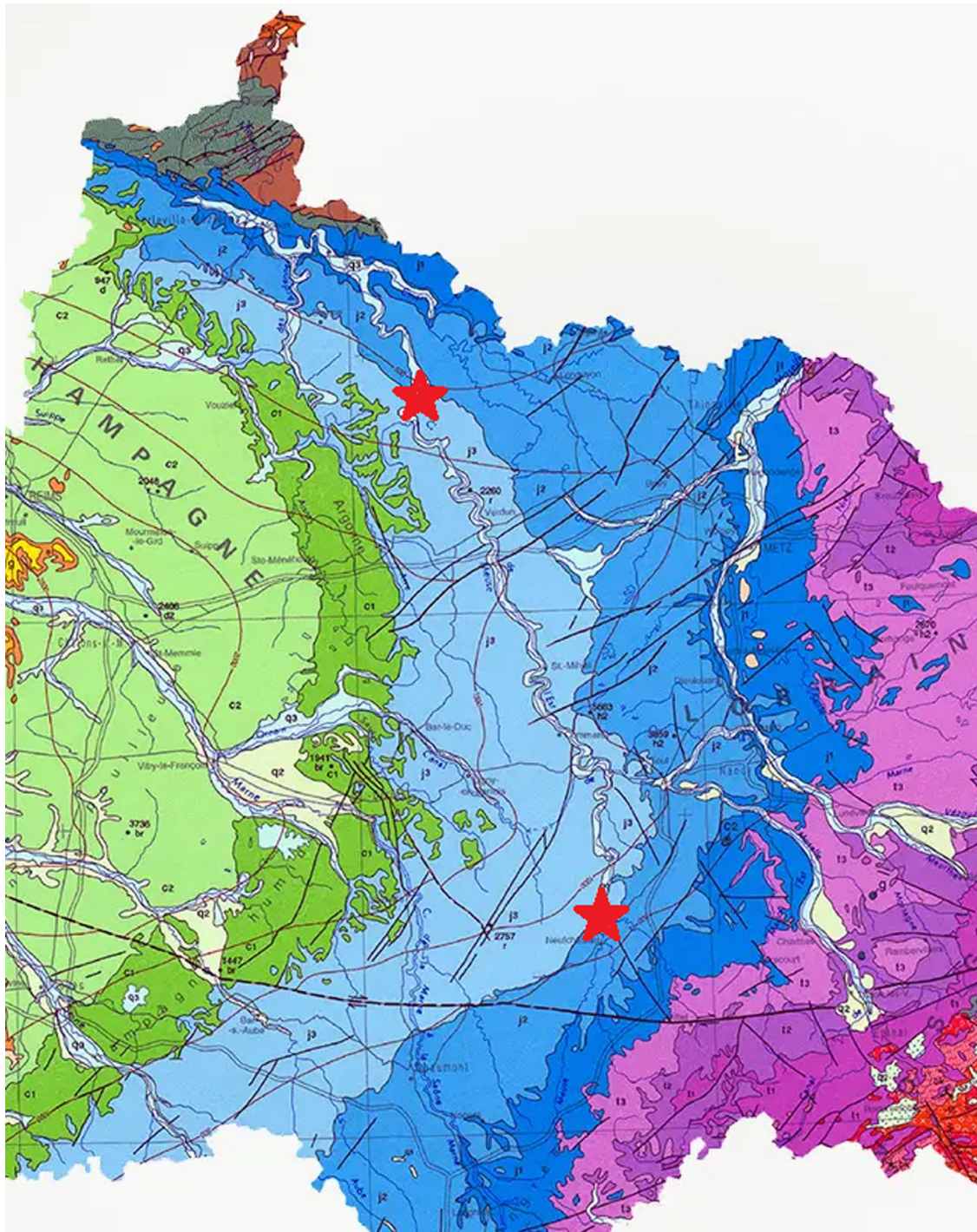


Figure 3 Map of the suggested provenance area in north-eastern France. Between the two red stars, the River Meuse (Maas) presently traverses Upper Jurassic deposits: Neufchâteau in the south and Stenay in the North. Source: BRGM.

(Maas) and Scheldt (Schelde). A large portion of the southernmost North Sea Basin depocentre was filled in by upper Pleistocene Rhine-Meuse deposits now assigned to the Kreftenheye and Beegden formations (Busschers et al., 2007, 2012). Of the contributing rivers, only the Meuse traverses a long stretch of Jurassic deposits in its upper reach (Bosch, 1992). The influence of Belgian rivers, such as the Scheldt or smaller streams, can be ruled out. As already noted by Jagt & Reumer (2010, and references therein), with the exception of some small outliers, there are no

Jurassic deposits in the erosional area of River Scheldt. Possibly some other Belgian rivers (Westerhoff, 2009, pp. 136, 137, fig. 6.9) may have transported Early or Middle Jurassic material from the southern Ardennes and Belgian Luxembourg northwards into the sedimentation area of the Rhine-Meuse river complex. As our fossil is not of Early or Middle, but of Late Jurassic age, a Belgian or Luxembourg provenance may be excluded. Therefore, we hypothesise that our nerineoid originates from Upper Jurassic levels in the Paris Basin of north-eastern France (Fig. 3), having

been redeposited in the North Sea Basin by the River Meuse. To date, it constitutes the find furthest away from the source area.

Acknowledgements. We wish to thank Dr Heinz Kollmann (Vienna) for confirmation of our identification and for stratigraphic information. John Jagt (Maastricht) critically read the manuscript and provided additional items of literature and helpful suggestions.

References

- Bosch, P.W.**, 1992. De herkomstgebieden van de Maasgesteenten. *Grondboor & Hamer* **46**: 57–64.
- Busschers, F.S., van Heteren, S. & Westerhoff, W.**, 2012. Het stratigrafische raamwerk voor de geologische opbouw van het zandwingebied Maasvlakte 2. Rapport 1 van het geo-archeologisch en paleontologisch onderzoek zandwingebied en buitencontour Maasvlakte 2. TNO 2012 R11131.
- Busschers, F.S., Kasse, C., van Balen, R.T., Vandenbergh, J., Cohen, K.M., Weerts, H.J.T., Wallinga, J., Johns, C., Cleveringa, P. & Bunnik, F.P.M.**, 2007. Late Pleistocene evolution of the Rhine-Meuse system in the southern North Sea basin: imprints of climate change, sea-level oscillation and glacio-isostasy. *Quaternary Science Reviews* **26**(25–28): 3216–3248.
- Fischer, J.-C.**, 2016. *Guide des fossiles de France et des régions limitrophes*. Dunod (Paris Malakoff): 484 pp.
- Fleming, J.**, 1828. *A history of British animals*. Bell & Bradfute (Edinburgh): 565 pp.
- Jagt, J.W.M., Kuypers, J., Michels, G. & Stroucken, J.**, 2015. Een Laat-Jurassische zee-egel als zwerver uit Limburgs Maasgrind. *Grondboor & Hamer* **69**(2): 88–91.
- Jagt, J.W.M. & Reumer, J.W.F.**, 2010. An enigmatic fossil crinoid from the Kor en Bot trawling trips on the Oosterschelde (Zeeland, the Netherlands). *Netherlands Journal of Geosciences - Geologie en Mijnbouw* **89**(2): 169–172.
- Kollmann, H.A.**, 2014. The extinct Nerineoidea and Acteonelloidea (Heterobranchia, Gastropoda): a palaeobiological approach. *Geodiversitas* **36**(3): 349–383. DOI: [10.5252/g2014n3a2](https://doi.org/10.5252/g2014n3a2).
- Kuitemans, M., van Kolfshoten, Th., Busschers, F., & de Loecker, D.**, 2015. The geoarchaeological and palaeontological research in the Maasvlakte 2 sand extraction zone and on the artificially created Maasvlakte 2 beach – a synthesis. *BOOR-rapporten* **566**: 351–398.
- Langeveld, B.W.**, 2020. New finds, sites and radiocarbon dates of skeletal remains of the Great Auk *Pinguinus impennis* from The Netherlands. *Ardea* **108**(1): 5–19. DOI: [10.5253/arde.v108i1.a10](https://doi.org/10.5253/arde.v108i1.a10).
- Lijn, P. van der**, 1974. *Het Keienboek. Mineralen, gesteenten en fossielen in Nederland*. Zutphen, W.J. Thieme & Cie (Zutphen), pp. 361
- Miller, J.S.**, 1821. A natural history of the Crinoidea or lily-shaped animals, with observation on the genera Asteria, Euryale, Comatula and Marsupites. *Bryan & Co. (Bristol)*: 1–150.
- Mol, D., Langeveld, B., Janse, A., Langendoen, W. & Smolarz, J.**, 2015. Determinatiedag fossiele strandvondsten van Maasvlakte 2 in Futureland: een verslag. *Cranium* **32**(1): 49–58.
- Mol, D., Post, K., Reumer, J.W.F., van der Plicht, J., de Vos, J., van Geel, B., van Reenen, G., Pals, J.P. & Glimmerveen, J.**, 2006. The Eurogeul – first report of the palaeontological, palynological and archaeological investigations of this part of the North Sea. *Quaternary International* **143**: 178–185.
- Overeem, I., Weltje, G.J., Bishop-Kay, C. & Kroonenberg, S.B.**, 2001. The Late Cenozoic Eridanos delta system in the Southern North Sea Basin: a climate signal in sediment supply? *Basin Research* **13**(3): 293–312.
- Thurmann, J.**, 1832. *Essai sur les soulèvements Jurassiques du Porrentruy*. Levrault (Paris): 84 pp.
- Wentworth, C.K.**, 1922. A scale of grade and class terms for clastic sediments. *Journal of Geology* **30**(5): 377–392.
- Westerhoff, W.E.**, 2009. *Stratigraphy and sedimentary evolution. The lower Rhine-Meuse system during the Late Pliocene and Early Pleistocene (southern North Sea Basin)*. Thesis, Vrije Universiteit Amsterdam. TNO Geological Survey of the Netherlands (Utrecht): 168 pp.
- Williams, J., Arsenault, M.A., Buczkowski, B.J., Reid, J.A., Flocks, J.G., Kulp, M.A., Penland, S. & Jenkins, C.J.**, Surficial sediment character of the Louisiana offshore continental shelf region: A GIS Compilation. United States Geological Survey Open-File Report 2006-1195, 2006. <http://pubs.usgs.gov/of/2006/1195/index.htm>.