



# From cradle to grave? A global hotspot and new species of the genus *Lobaria* discovered in the Himalayas and the Hengduan Mountains

M.X. Yang<sup>1,2,3,\*</sup>, L.S. Wang<sup>4</sup>, C.C. Miao<sup>1,4,5</sup>, C. Scheidegger<sup>1,\*</sup>

## Key words

East Asia  
evolution  
lichen-forming ascomycetes  
*Lobaria*  
multi-locus phylogeny  
new taxa

**Abstract** In this study, the East Asian diversity of green-algal *Lobaria* was evaluated by applying both morphological and phylogenetic approaches. A multi-locus phylogenetic analysis of 72 green-algal *Lobaria* specimens was performed using a three-locus and time-calibrated species-tree approach. The analyses demonstrate that pairs of sexually and vegetatively reproducing lineages split into highly supported monophyletic clades. Taxonomically, 11 green-algal *Lobaria* species were identified as new to science, while 10 were previously described species. The species differentiated during the Pliocene and Pleistocene. The coincidence of paleoclimatic events with estimated dates of divergence support a bioclimatic hypothesis for species evolution in the green-algal *Lobaria*. Molecular phylogenies, a summary of diversity, detailed new species descriptions and geographical analyses are provided. Special recognition of species with a long evolutionary history, which merit high conservation priority, will be critical for preserving geographically restricted endemics in the Himalayas and the Hengduan Mountains, where habitat loss is driving rapid declines.

**Citation:** Yang MX, Wang LS, Miao CC, et al. 2022. From cradle to grave? A global hotspot and new species of the genus *Lobaria* discovered in the Himalayas and the Hengduan Mountains. *Persoonia* 48: 150–174. <https://doi.org/10.3767/persoonia.2022.48.04>. Effectively published online: 14 May 2022 [Received: 7 November 2021; Accepted: 24 January 2022].

## INTRODUCTION

The lichenized ascomycetous genus *Lobaria* belongs to the subfamily *Lobarioideae* of the family *Peltigeraceae*, and forms an obligate symbiotic association with algae and/or cyanobacteria (photobionts) (Ahmadjian 1993, Honegger 2012, Lücking et al. 2017, Widhelm et al. 2019, Simon et al. 2020). The genus *Lobaria* is characterised by a large, foliose, foveolate thallus. The majority of species have neither cyphellae nor pseudocyphellae (Yoshimura 1998a, b, Wedin & Wiklund 2004, Wedin et al. 2009). Photobionts of *Lobaria* are either green-algal and belong to *Symbiobolus reticulata* (Dal Grande et al. 2014, Škaloud et al. 2016) or cyanobacterial and belong to the genus *Nostoc* (Cornejo & Scheidegger 2015). Based on a three-gene phylogeny (mtSSU, nuLSU, ITS data) and morpho-chemical and ecological features, Moncada et al. (2013) classified seven clades of *Lobaria* s.lat. as different genetic lineages, including the actual genus *Lobaria* in a narrower sense. *Lobaria* s.str. largely consists of three species groups: the circumboreal green-algal *L. linita*, the cyanobacterial *L. retigera* group, and the green-algal *L. pulmonaria* group.

The distribution of the genus *Lobaria* ranges from tropical to temperate regions (Miadlikowska & Lutyoni 2004, Lücking et al. 2009, Cornejo & Scheidegger 2010, Miadlikowska et al. 2014). The type species, *L. pulmonaria*, has an extremely wide distribution in the Northern Hemisphere (Hilmo et al. 2012), covering Asia (Yoshimura 1971, Cornejo & Scheidegger 2015, Devkota et al. 2017), Europe (Nadyeina et al. 2014) and North America (Jordan 1973). In the Southern Hemisphere, this species occurs in East African mountain systems and in South Africa (Schiefelbein & Thell 2018). Endemic species of green-algal *Lobaria* are known from the west coast of North America (*L. oregana*), the Macaronesian Islands (*L. immixta*, *L. macaronesica*) and East Asia.

The following species of green-algal *Lobaria* have been reported in East Asia: *Lobaria gyrophorica*, *L. kazawaensis*, *L. orientalis*, *L. sachalinensis*, *L. spathulata* and *L. tuberculata* (Yoshimura 1971, Moncada et al. 2013, Cornejo & Scheidegger 2015, Cornejo et al. 2018) across a relatively wide distribution area; *L. chinensis* and *L. isidiophora* in Taiwan; *L. yoshimurae* in Taiwan and Japan (Kurokawa 1978, Lai 2000); and *L. meridionalis* in the Philippines (Yoshimura 1971, Cornejo & Scheidegger 2015). Additionally, *L. pindarensis* occurs in the western and central Himalayas (Devkota et al. 2017), and *L. yunnanensis* and *L. yulongensis* have been reported in the Hengduan Mountains (Yoshimura 1971, Chen 1995, Cornejo et al. 2018). *Lobaria yulongensis* has been reported in Yunlongshan in Yunnan (Chen 1995). This species is characterised by numerous lobules at the margins, especially at the ridge of the upper surface (Chen 1995). *Lobaria yoshimurae* is known to occur in Japan (Kurokawa 1978) and Taiwan (Lai 2000). This species can be identified by the absence of isidia and lobules, and the presence of gyrophoric acid.

<sup>1</sup> Biodiversity and Conservation Biology, Swiss Federal Institute for Forest, Snow and Landscape Research WSL, Zürcherstrasse 111, 8903 Birmensdorf, Switzerland; corresponding authors e-mail: [mxyang@ust.hk](mailto:mxyang@ust.hk); [christoph.scheidegger@wsl.ch](mailto:christoph.scheidegger@wsl.ch).

<sup>2</sup> Institute of Plant Sciences, University of Bern, Altenbergrain 21, 3013 Bern, Switzerland.

<sup>3</sup> Division of Life Science and Center for Chinese Medicine, The Hong Kong University of Science and Technology, Hong Kong, China

<sup>4</sup> Key Laboratory for Plant Diversity and Biogeography of East Asia, Kunming Institute of Botany, Chinese Academy of Sciences, Lanhei Road 132, Heilongtan, Kunming 650201, Yunnan, China.

<sup>5</sup> Key Laboratory of Plant Stress Research, College of Life Sciences, Shandong Normal University, Jinan 250014, Shandong, China.

The mountain ecosystems of the Himalayas and the Hengduan Mountains regions bordering the Qinghai-Tibetan Plateau (QTP) harbour some of the world's richest floras, yet unlike other biodiversity hotspots they are temperate rather than tropical or Mediterranean in climate (Xing & Ree 2017). The fossil record and reconstructed biogeographic histories show that the core QTP region has been an evolutionary centre (Deng et al. 2011, Tseng et al. 2013, Wang et al. 2014, Robert et al. 2020), even termed a 'cradle of evolution' of cold-adapted mammals and forest-dwelling ground beetles (Schmidt et al. 2012). Compared with other mountain ranges bordering the QTP, the Hengduan Mountains are younger, having uplifted over the last 8 million years (Myr), and they had a very high species diversification rate during this period (Xing & Ree 2017). During the same period, the rate of *in situ* diversification remained relatively high in the Himalayas (Xing & Ree 2017). The tectonic uplift of the two mountain systems created environmental conditions, such as new habitats and barriers to population migration and dispersal, that increased the rate at which resident species diverge and evolve to form new ones, thus acting as cradles for biodiversity (Rangel et al. 2018). Moreover, many studies on plants (Xing & Ree 2017, Yu et al. 2020) and birds (Martin et al. 2015) have demonstrated that species dispersal between the Himalayas and the Hengduan Mountains increased significantly over the last 2 Myr. Despite an increasing interest of biogeographers, the biota in these two regions remains poorly understood. The diversity of lichenized species in particular is very high in both regions, and discoveries of new species have been published recently (Aptroot & Feijen 2002, Cornejo & Scheidegger 2015, Devkota et al. 2017, Liu et al. 2017, Wang et al. 2017, Cornejo et al. 2018, Yang et al. 2019).

Here, we studied 476 green-algal *Lobaria* specimens collected in the Himalayan regions, Hengduan Mountains, QTP, and other regions of East Asia (Taiwan, Primorsky Krai, Kurile Islands and Sakhalin Island) where the presence of green-algal *Lobaria* has been reported. In this phylogenetic study, we included all reported species in East Asia, except *L. yulongensis* and *L. yoshimurae* (Kurokawa 1978), which we only studied morphologically. Our primary aim was to investigate the phylogenetic relationships between specimens of green-algal *Lobaria* collected in the Himalayas and the Hengduan Mountains, and previously described taxa from East Asia. We also investigated whether there is evidence that geographical and climatic events in the Himalayas and Hengduan Mountains influenced the speciation of green-algal *Lobaria*. We conducted morphological studies and phylogenetic analyses of DNA sequences. To obtain divergence time estimates, we used a molecular-clock-calibrated phylogeny.

## MATERIALS AND METHODS

### Sampling specimens

In total, 476 thalli of green-algal *Lobaria* were collected in 2016–2019 by the authors or studied in the Lichen Herbarium of the Kunming Institute of Botany (KUN-L). The identification of *Lobaria* species based on morphology alone is difficult, especially when thalli of green-algal *Lobaria* are not well developed, and molecular information from a multilocus phylogenetic approach is required to unravel the genus' species diversity. From all specimens of green-algal *Lobaria*, we therefore excluded chemically identical specimens sharing the same ITS haplotype. This resulted in a set of 72 specimens for phylogenetic analyses and time-estimates that covered all of the originally found ITS haplotypes of green-algae-containing specimens: 12 *Lobaria* specimens were examined from Bhutan, three from Nepal, eight from Yunnan, 25 from Xizang, three from Sakhalin Island, three from Kurile Islands, six from Primorsky Krai, one from Qinghai, seven from Taiwan and four selected outgroup species (from Madeira, Switzerland and Russia). Twenty-two specimens from Nepal, Primorsky Krai, Taiwan, the Kurile Islands and Sakhalin Island, had already been included in a previous study (Cornejo et al. 2018).

All dried specimens and DNA extracts were stored frozen (-20 °C) at the Swiss Federal Institute for Forest, Snow and Landscape Research WSL. We initially identified all specimens using morphological characteristics. From each collection site, we used at least three specimens that fulfilled all diagnostic traits of a specific species, following Räsänen (1952) and Yoshimura (1969, 1971). We verified the chemical diagnostic features with thin-layer chromatography, following the methods used by Cornejo et al. (2009). We examined the specimens using standard microscopic techniques and hand-sectioned them under a Carl Zeiss Axio Lab.A1 dissecting microscope (Carl Zeiss Microscopy, LLC; White Plains, NY, USA) in water. Anatomical descriptions are based on observations using a Wild Heerbrugg Plant 1× dissecting microscope. We took macrophotographs with a Nikon D-300s camera (Tokyo, Japan) equipped with a Zuiko Macro 38 mm F/2.8 macrolens (Olympus, Bethlehem, PA, USA) on a 10.5 cm extension tube. We used the program Zerene Stacker ([zerenesystems.com/cms/home](http://zerenesystems.com/cms/home)) for focus stacking. The descriptions of species are arranged in alphabetical order of the epithets. Specimens used in this study, along with the corresponding voucher information, are shown in Table 1.

**Table 1** Localities, fungaria and collectors of specimens used for this phylogenetic study.

Locality	Specimen Nr.	Fungarium	Collector(s)
Paro District, Bhutan	40459, 40473, 40476, 40486, 40494, 40506, 40538, 40544, 40552, 40623, 40629, 40635	Scheidegger	C. Scheidegger
Sakhalin Island, Russia	RS/104, RS/113a, RS/121	Scheidegger	C. Scheidegger, S. Chabanenko, Taran
Kurile Islands, Russia	RIT/04c, RIT/04d, RIT/08a	Scheidegger	S. Chabanenko
Nepal	NE23/02a, NE40/01b, NE64/06a	Scheidegger	C. Scheidegger, S. Devkota
Primorsky Krai, Russia	010/1, 004/15, 373/1, 374/1, 377/1, 377/2	Scheidegger	S. Chabanenko
Qinghai, China	20-67877	KUN-L	L.S. Wang et al.
Taiwan, China	CT3/02b, CT3/02e, CT16/01f, TW2/01_8, TW2/26_2, TW3/01_10, TW3/02_6	KUN-L	J.-T. Yang, F. Dal Grande, C. Scheidegger
Xizang, China	16-52050, 16-53208, 16-53682, 18-59984, 18-62299, 18-62315, 19-63350, 19-64420, 19-64424, 19-64427, 19-64430, 19-64441, 19-64448, 19-64564, 19-65719, XY19-501, XY19-505, XY19-525, XY19-526, XY19-1007, XY19-1049, XY19-1105, XY19-1114, XY19-1119, XY19-1128	KUN-L	L.S. Wang, M.X. Yang et al.
Yunnan, China	40008, 40081, 40112, 40332, 40362, 40396, 40411, CT10/02e	Scheidegger	C. Scheidegger, L.S. Wang, M.X. Yang



**Table 2** Overview of 72 green-algal *Lobaria* specimens arranged according to the retrieved clades in the species-tree, with the respective voucher information from GenBank. Sequences that were newly obtained in this study are indicated in **boldface**.

Taxon	Specimen ID	Lineage	Chemical feature	Diaspores/ Apothecia	GenBank number			Note
					ITS	<i>EF-1a</i>	<i>RPB2</i>	
<i>L. pindarensis</i>	18-59984	1	Gyrophoric, norstictic, stictic, constictic acid	Cylindrical isidia	<b>MW269755</b>	<b>MW393957</b>	<b>MW393992</b>	
	19-64424				<b>MW343613</b>	<b>MW393958</b>	<b>MW393994</b>	
	19-64430				<b>MW343615</b>	<b>MW393960</b>	<b>MW393996</b>	
	19-64441				<b>MW343614</b>	<b>MW393961</b>	<b>MW393997</b>	
	40552				<b>MW343616</b>	<b>MW393955</b>	<b>MW393990</b>	
	NE23/02a				KC494086	KC602010	KC602556	
	NE40/01b				MF151243	MF151196	MF151701	
	NE64/06a				MF151246	MF151198	MF151704	
<i>L. devkotaie</i>	18-62315	2	Gyrophoric, stictic, constictic, hypoconstictic acid	No isidia	<b>MW343617</b>	<b>MW393966</b>	<b>MW394002</b>	Type
	19-64564				<b>MZ724567</b>	<b>MW393963</b>	<b>MW393999</b>	
	XY19-1105				<b>MZ724618</b>	<b>MW393969</b>	<b>MW394005</b>	
<i>L. spathulata</i>	RIT/04c	3	Gyrophoric acid	Marginal lobules	MF151252	MF151202	MF151723	
	RIT/04d				MF151253	MF151205	MF151719	
	RIT/08a				MF151254	MF151206	MF151709	
<i>L. rhizinata</i>	40332	4	Gyrophoric, norstictic, stictic, constictic acid	No isidia or apothecia	<b>MW343620</b>	<b>MW393943</b>	<b>MW393978</b>	
	40362				<b>MW343621</b>	<b>MW393944</b>	<b>MW393979</b>	
	40396				<b>MW343622</b>	<b>MW393945</b>	<b>MW393980</b>	
	40411				<b>MW343623</b>	<b>MW393946</b>	<b>MW393981</b>	
<i>L. granulosa</i>	40629	5	Gyrophoric, norstictic, stictic, constictic acid	Knob-like and multiple isidia in a group	<b>MW343625</b>	–	–	
	40635				<b>MW343626</b>	–	–	
	XY19-1128				<b>MW343624</b>	<b>MW393972</b>	<b>MW394008</b>	
<i>L. bhutanica</i>	40476	6	Norstictic, stictic, constictic acid	No isidia	<b>MW343627</b>	<b>MW393949</b>	<b>MW393984</b>	
	40494				<b>MW343629</b>	<b>MW393951</b>	<b>MW393986</b>	
	40506				<b>MW343630</b>	<b>MW393952</b>	<b>MW393987</b>	
	40544				<b>MW343628</b>	<b>MW393954</b>	<b>MW393989</b>	
<i>L. gyrophorica</i>	CT16/01f	7	Gyrophoric acid	No isidia	MF151248	MF151178	MF151707	
	TW2/01_8				MF151247	MF151180	MF151724	
	TW2/26_2				MF151249	MF151181	MF151733	
<i>L. perelegans</i>	19-65719	8	Gyrophoric, stictic acid	Knob-like, blastidiate and multiple isidia in a group	<b>MW343640</b>	<b>MW393964</b>	<b>MW394000</b>	Type
	40623				<b>MW343641</b>	–	–	
<i>L. multipartita</i>	19-63350	9	Gyrophoric, stictic acid	Cylindrical isidia, marginal lobules	<b>MW343637</b>	<b>MW393956</b>	<b>MW393991</b>	
	40459				<b>MW343638</b>	<b>MW393947</b>	<b>MW393982</b>	
	XY19-501				<b>MW343639</b>	–	<b>MW394009</b>	
	XY19-525				<b>MW343636</b>	<b>MW393974</b>	<b>MW394011</b>	
<i>L. tibetana</i>	18-62299	10	Gyrophoric, stictic acid	Cylindrical and knob-like isidia	<b>MW343631</b>	<b>MW393965</b>	<b>MW394001</b>	
	40473				<b>MW343633</b>	<b>MW393948</b>	<b>MW393983</b>	
	40538				<b>MW343632</b>	<b>MW393953</b>	<b>MW393988</b>	
	XY19-1007				<b>MW343634</b>	<b>MW393967</b>	<b>MW394003</b>	
<i>L. orientalis</i>	004/15	11	Gyrophoric, norstictic, stictic acid, constictic acid	No isidia	MF151223	MF151172	MF151695	
	010/1				MF151230	MF151184	MF151698	
	40486				<b>MW343635</b>	<b>MW393950</b>	<b>MW393985</b>	
<i>L. isidiophora</i>	TW3/01_10 TW3/02_6	12	Gyrophoric, norstictic, stictic acid	Cylindrical isidia	KC494095 KC494091	KC602602 KR476673	KC602542 KR476701	
<i>L. chinensis</i>	CT3/02b	13	Norstictic, stictic, constictic acid	No isidia	MF151238	MF151190	MF151717	
	CT3/02e				MF151237	MF151191	MF151732	
<i>L. costata</i>	40081	14	Gyrophoric, stictic acid	No isidia	<b>MW343642</b>	<b>MW393941</b>	<b>MW393976</b>	Type
	40112				<b>MW343643</b>	<b>MW393942</b>	<b>MW393977</b>	
	16-52050				<b>MW343645</b>	–	–	
	16-53682				<b>MW343644</b>	–	–	
<i>L. ligulata</i>	XY19-1114	15	Stictic, constictic, hypoconstictic acid	No isidia	<b>MW343646</b>	<b>MW393970</b>	<b>MW394006</b>	Type
	XY19-1119				<b>MW343647</b>	<b>MW393971</b>	<b>MW394007</b>	
<i>L. verruculosa</i>	373/1	16	Stictic, constictic acid (norstictic acid)	Cylindrical isidia	MF151255	MF151212	MF151737	
	374/1				MF151256	MF151209	MF151738	
	XY19-505				<b>MW343648</b>	<b>MW393973</b>	<b>MW394010</b>	
<i>L. meridionalis</i>	377/1	17	Stictic, norstictic acid	Cylindrical isidia	MF151257	MF151207	MF151734	
	377/2				KC522960	KC602631	KC602588	
<i>L. kazawaensis</i>	RS/104	18	Retigeranic acid A+B	Cylindrical isidia, rarely lobulate	KC522950	KC602604	KC602545	
<i>L. sachalinensis</i>	20-67877	19	Retigeranic acid A+B	Cylindrical isidia	<b>MW534714</b>	–	–	
	RS/113a				KC522954	KC602616	KC602565	
	RS/121				KC522955	KC602617	KC602566	
<i>L. wanglisongiana</i>	16-53208	20	Pannaric acid	Cylindrical, blastidiate and multiple isidia in a group, marginal lobules	<b>MW343649</b>	–	–	Type
	19-64427				<b>MW343650</b>	<b>MW393959</b>	<b>MW393995</b>	
	19-64448				<b>MW343651</b>	<b>MW393962</b>	<b>MW393998</b>	
	XY19-1049				<b>MW343652</b>	<b>MW393968</b>	<b>MW394004</b>	

**Table 2** (cont.)

Taxon	Specimen ID	Lineage	Chemical feature	Diaspores/ Apothecia	GenBank number			Note
					ITS	<i>EF-1a</i>	<i>RPB2</i>	
<i>L. yunnanensis</i>	40008	21	No substances detected	No isidia	<b>MW343653</b>	<b>MW393940</b>	<b>MW393975</b>	
	19-64420				<b>MW343654</b>	–	<b>MW393993</b>	
	CT10/02a				KC522959	KC602629	KC602586	
	XY19-526				<b>MW343655</b>	–	–	
<b>Outgroup specimens</b>								
<i>L. immixta</i>	X3		Gyrophoric, norstictic, stictic acid	Squamule-like flattened isidia	GU072764	GU072881	GU072839	
<i>L. macaronesica</i>	PM12/13c		Norstictic, stictic acid	Cylindrical isidia	GU072746	GU072884	GU072863	
<i>L. pulmonaria</i>	B13		Norstictic, stictic acid	Soredia and isidioid soredia	MF151265	MF151214	MF151740	
<i>L. tuberculata</i>	RS/95		4-0-methylgyrophoric and gyrophoric acid	granular isidia	KC522958	KC602628	KC602582	

### DNA isolation, PCR amplification and sequencing

Genomic DNA was extracted from freshly collected and frozen herbarium specimens. About 15 mg of visually uncontaminated lichen thallus was sampled from each specimen for molecular analyses. Frozen lichen samples were lyophilized and disrupted with a stainless steel bead in a Retsch MM2000 mill (Düsseldorf, Germany) for 2 min at 30 Hz.

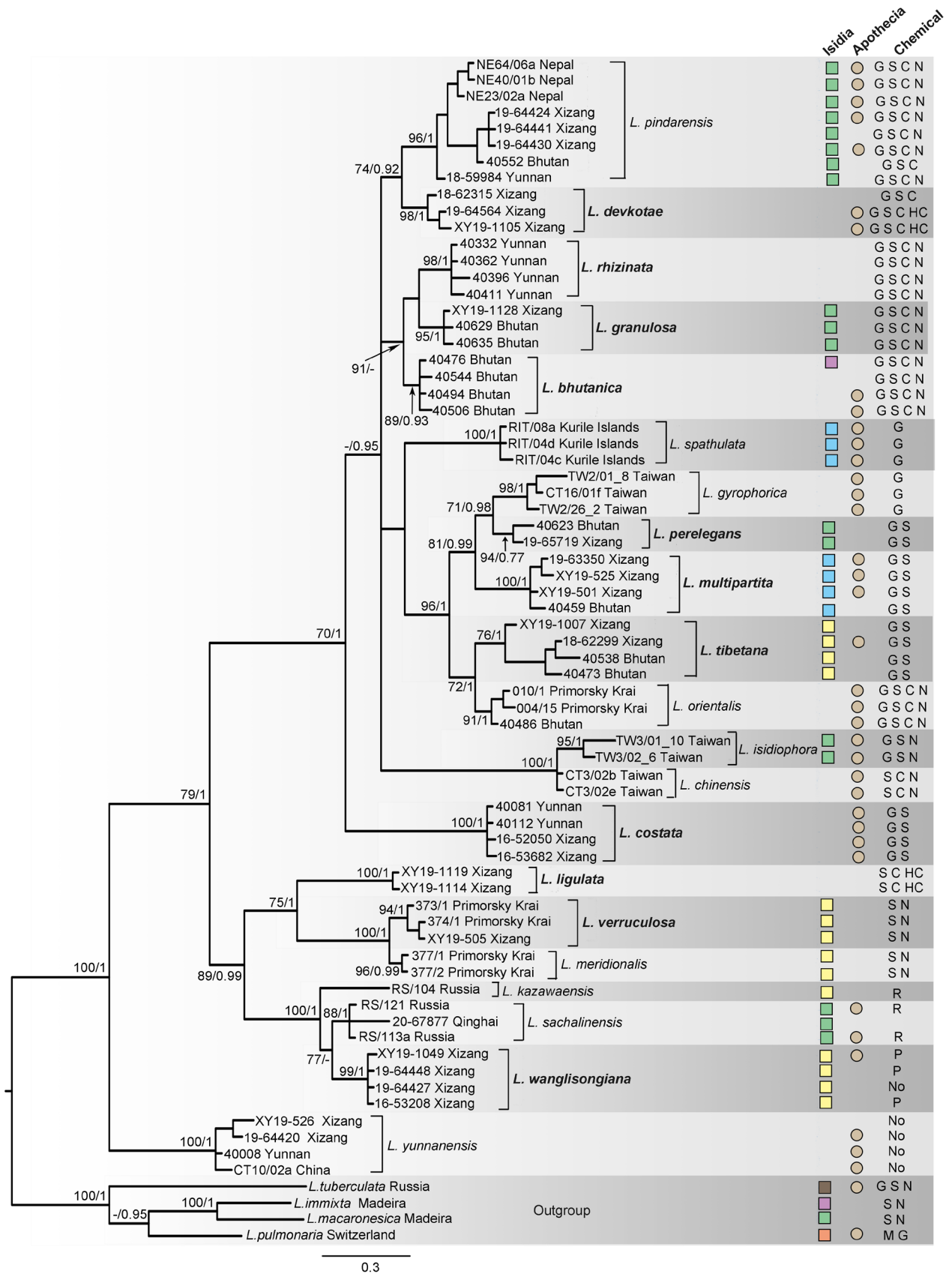
Genomic DNA was extracted using the Qiagen DNAeasy Plant Kit (QIAGEN, Hilden, Germany), following the manufacturer's Plant Tissue Mini protocol. Sequences were generated from three independent nuclear markers: the nuclear ribosomal internal transcribed spacer (ITS) region, a partial sequence of the putatively single-copy translation elongation factor-1 alpha gene (*EF-1α*), and an intron-containing portion of the putatively single-copy RNA polymerase II second largest subunit gene (*RPB2*). The fungus-specific primer ITS1F (Gardes & Bruns 1993) and the universal primer ITS4 (White et al. 1990) were used to amplify the ITS, as described in Cornejo et al. (2009). To make the PCR more specific and to amplify shorter fragments, the partial *RPB2* gene was amplified and cycle sequenced with the modified primer sets Lp-RPB-R (5'-CCCATGGCTTGCT-TACCCAT-3') and Lp-RPB-F (5'-CAAACCGCGTCAACTG-CATAAT-3') designed by Cornejo & Scheidegger (2015). The partial *EF-1α* gene (Johannesson et al. 2000) was amplified and cycle sequenced with the modified primer sets Lp-EF-1α-F (5'-RGACAAGRCTCACATCAACGTGGT-3') and Lp-EF-1α-R (5'-CCAGTGATCATGTTCTTGATGAAGT-3') (Cornejo & Scheidegger 2015).

All amplifications were performed with 1 μL DNA extract in a total of 15 μL containing the JumpStart™ REDTaq® Ready Mix™ PCR Reaction Mix (Sigma-Aldrich, St. Louis, MO, USA) and 100 nM of each primer. The cycling conditions for the ITS primer set designed in our lab were: (a) 2 min at 94 °C, (b) 10 cycles of (30 s at 94 °C, 45 s at 56 °C, 45 s at 72 °C), (c) 25 cycles of (30 s at 94 °C, 45 s at 52 °C, 45 s at 72 °C), (d) 10 min at 72 °C final extension. The cycling conditions for the *RPB2* primer set designed in our lab were: (a) 2 min at 94 °C, (b) 30 cycles of (60 s at 94 °C, 60 s at 49 °C, 60 s at 72 °C), (c) 10 min at 72 °C final extension. The cycling conditions for amplification of the *EF-1α* locus with primer designed in our lab were: (a) 2 min at 94 °C, (b) 35 cycles of (30 s at 94 °C, 30 s at 53 °C, 30 s at 72 °C), (c) 10 min at 72 °C final extension. The PCR products were visualised on 1.5 % agarose gel. The PCR products were then sent to Microsynth AG (Balgach, Switzerland) for sequencing with the same primers as the original PCR amplifications. Specimens used in this study, along with voucher information from GenBank accession numbers, chemical features and type of diaspores or apothecia are listed in Table 2.

### Phylogenetic analyses

Phylogenetic relationships were reconstructed using sequences of the three loci: ITS, *RPB2* and *EF-1α*, which were compiled for different analytical purposes. All sequences were assembled and edited using Geneious v. 7.1.9 (<https://www.geneious.com>). All newly produced sequences were checked using the BLASTN suite of the National Center for Biotechnology Information (NCBI) website (<http://www.ncbi.nlm.nih.gov/BLAST/>) to verify their close relatives in order to avoid possible contaminants. Matrices were aligned with MAFFT, using the web service (<http://mafft.cbrc.jp/alignment/server/index.html>). Sequences of each locus were aligned and analysed separately. Phylogenetic and molecular evolutionary analyses were conducted using MEGA v. 6 (Tamura et al. 2013). The ambiguously aligned regions were arranged manually for the phylogenetic analyses. The resulting alignment containing all three loci (ITS, *EF-1α* and *RPB2*) can be accessed at TreeBASE (study accession URL: <http://purl.org/phylo/treebase/phyloids/study/TB2:S28510>).

Single-gene analyses were conducted to test for potential incongruencies among the three-gene fragments using maximum likelihood (ML) analyses and Bayesian inference (BI). The three-gene fragments were combined using Geneious v. 7.1.9 for phylogenetic analysis, on the premise that no well-supported (BS > 70 %, Nuhn et al. 2013) conflict was detected. Maximum likelihood (ML) and Bayesian inference (BI) analyses were performed using RaxML v. 7.2.6 (Stamatakis 2006) and MrBayes v. 3.1.2 (Ronquist & Huelsenbeck 2003), respectively. Sequences of ITS, *EF-1α* and *RPB2* were manually divided into three, seven and three data blocks (Appendix 1), respectively. Each exon was separated into three blocks based on the first, second and third codon. The intron-exon structure of *EF-1α* was adopted from *Lobaria* sequences deposited in GenBank by Cornejo et al. (2018). The positions of rDNA and ITS1/2 were inferred by comparison with sequences from eukaryote seed alignments downloaded from Rfam (<https://rfam.xfam.org>) and mapped against the alignment consensus using minimap2 (Li 2018). The best partition schemes and evolutionary models were selected using PartitionFinder v. 2.1.1 (Lanfear et al. 2016). For the best partition schemes and evolutionary models, see Appendix 1. Under ML optimization, the GTR+G model was selected for RAXML searches, and the bootstrap values were calculated with 1000 replicates. For BI analyses, four Markov Chain Monte Carlo (MCMC) chains were run simultaneously for 20 M generations with trees sampled every 100 generations. We considered the sampling of the posterior distribution to be adequate when the average standard deviation of split frequencies was < 0.01. Chain convergence was determined by checking the effective sampling size (ESS > 200) in Tracer v. 1.6 (Rambaut et al. 2014). By omitting the first 25 % of trees



**Fig. 1** Phylogram generated from a maximum likelihood (RaxML) analysis based on the combined sequence data of ITS, *RPB2* and *EF-1 $\alpha$*  of *Lobaria*. ML bootstrap support values/Bayesian posterior probability  $\geq 70\%$  / 0.95 are indicated. Names in **bolditalic** are new species. The abbreviations indicate species characteristics: for the isidia form: green square = cylindrical or knob-like and clustered in groups, purple square = marginal laminal lobules, yellow square = coralloid and clustered in groups, blue square = cylindrical and marginal spatulate, orange square = isidioid soredia, brown square = granular isidia; for the apothecia: light brown circle = apothecia present on specimens; and for chemical features: G = gyrophoric acid, S = stictic acid, C = constictic acid, N = norstictic acid, HC = hypoconstictic acid, R = retigeric acid, P = pannaric acid, M = 4-0-methylgyrophoric and No = no chemical feature.



as burn-ins using the 'sump' and 'sumt' commands, a majority rule consensus tree was generated. Clades were judged using both ML Bootstrap (MLB  $\geq 70\%$ ) and Bayesian posterior probabilities (BPP  $\geq 0.95$ ). The tree files were visualized with FigTree v. 1.4.3 (Rambaut 2012) and edited using Adobe Photoshop CS6 (Adobe Systems Incorporated, San Jose, CA, USA).

The genealogical concordance phylogenetic species recognition (GCPSR) method of Taylor et al. (2000) was used to delimit phylogenetic species. Following Dettman et al. (2003), two GCPSR-based criteria must be fulfilled when a phylogenetic species is defined:

1. genealogical concordance: the clade is well supported in the majority (2/3) of the single-locus genealogies;
2. genealogical non-discordance: the clade is well supported by at least one single-locus genealogy and is not contradicted in any other single-locus genealogy at the same level of support.

Such clades were assessed using both ML bootstrap (MLB  $\geq 70\%$ ) and Bayesian posterior probabilities (BPP  $\geq 0.95$ ). Each phylogenetic species had to be relatively distinct and well differentiated from the other species, and all individuals had to be placed within the phylogenetic species.

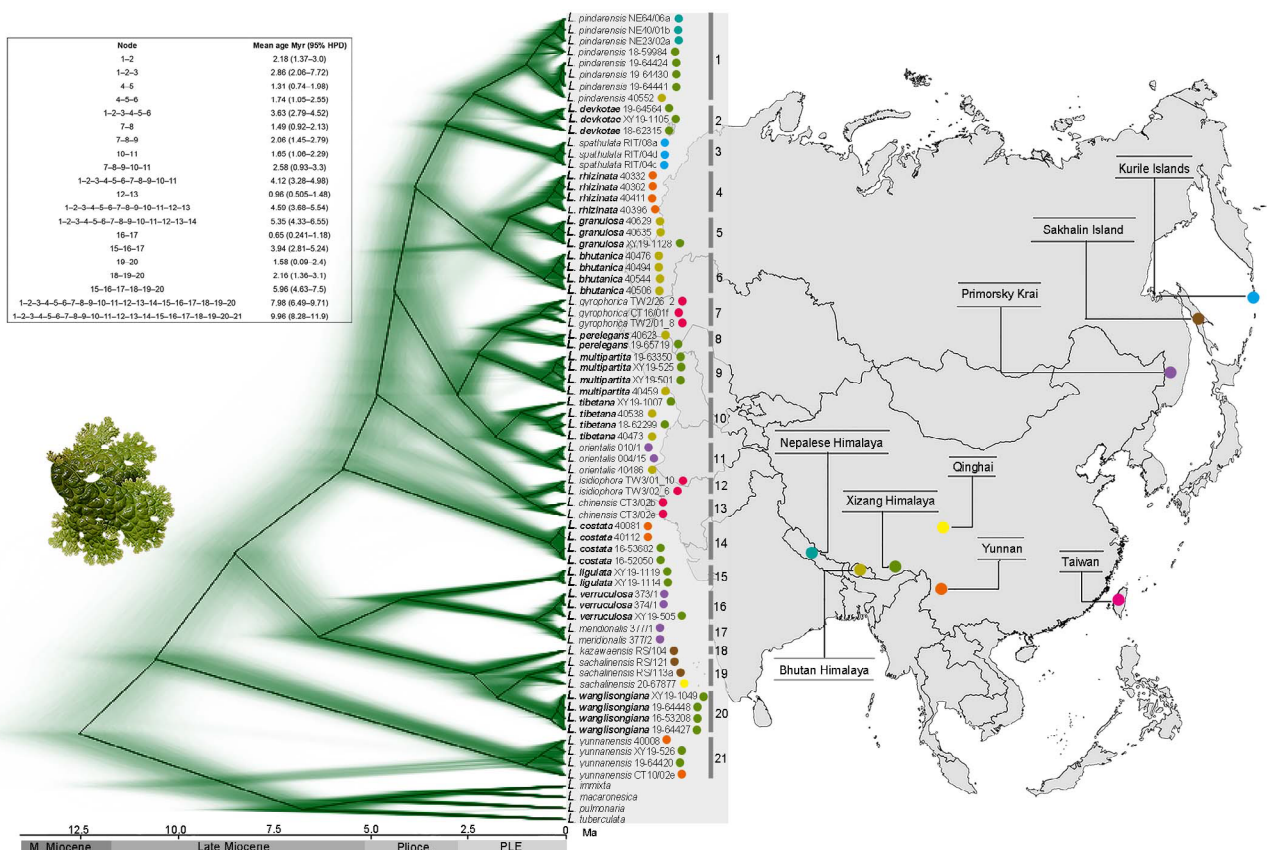
### Time-calibrated species-tree

We used the Bayesian method, implemented in the programs BEAUti and BEAST (both v. 1.8.4; Drummond & Suchard 2010; Drummond et al. 2012), to estimate a species-tree. We used the same dataset to estimate divergence time. We selected the best partition schemes and evolutionary models using PartitionFinder v. 2.2.1 (Lanfear et al. 2016; Appendix 1). We performed topologies with BEAST v. 1.8.4, using the uncor-

related lognormal-relaxed clock model, which draws the rate for each branch from an underlying lognormal distribution. The approach used partitioned data in BEAUti v. 1.8.4, analysed with unlinked substitution models across the loci. We selected a Yule speciation model for the species-tree prior, and we set the population size model to piecewise linear and constant root. We linked clock and tree parameters across partitions and used default values for the remaining priors. We ran three independent MCMC analyses of 25 million generations with a burn-in of 10% for each run. We assessed the effective sample sizes (ESS) of parameters of interest with Tracer (v. 1.6; Rambaut et al. 2014) to ensure that sample sizes were all greater than 200. We computed the maximum clade credibility tree, including posterior probabilities of branches, with TreeAnnotator (v. 1.8.4; included in the BEAST 1.8.4 package) from the sampled trees after exclusion of the burn-in. Additionally, we visualised sampled trees in DensiTree (v. 2.2.5; Bouckaert 2010) after exclusion of the burn-in, which provides a qualitative approach to represent all trees present in a species-tree analysis.

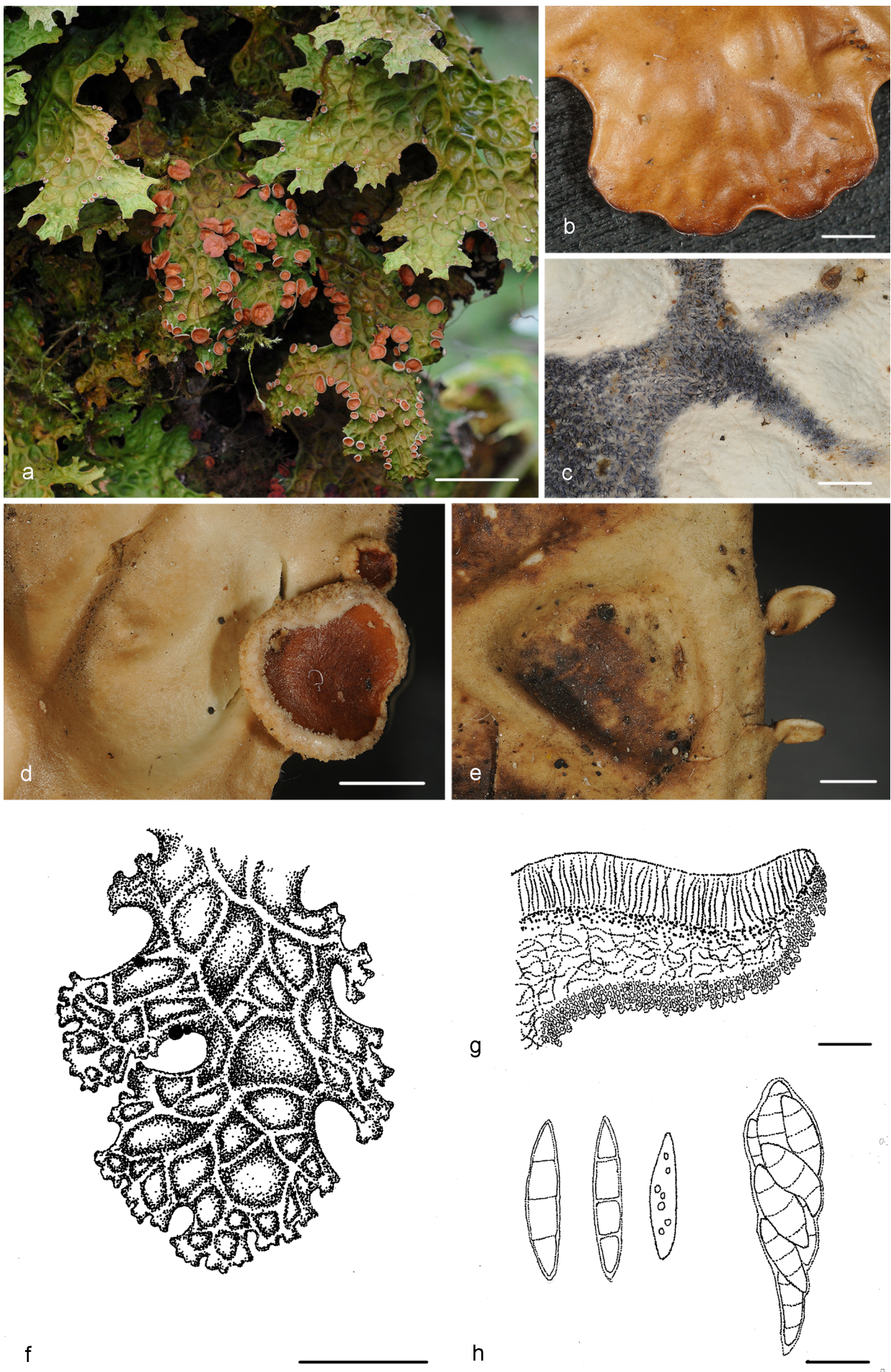
## RESULTS

Individual gene-trees obtained from Bayesian analyses with branch support by ML and BI analyses are shown in Appendix 2–4, where ML bootstrap support values/Bayesian posterior probabilities greater than 70% / 0.95 are indicated. A three-locus combined ML analysis is presented in Fig. 1. A total of 19 well-supported clades were identified (Table 2, Fig. 1), except for *Lobaria chinensis* and *L. kazawaensis*, the phylogenies were consistent with the individual ITS, *RPB2* and *EF-1 $\alpha$*  gene trees. Although *L. chinensis* and *L. kazawaensis* were not well-supported on the phylogenetic tree, they can be identified by



**Fig. 2** Time-calibrated species-trees based on the analysis of three loci under the hierarchical Bayesian model (BEAST) and represented with DensiTree graphical software. Branches are indicated by many lines and appear as a dense green area. Names in **boldface** are new species. Four outgroup-species of the genus *Lobaria* root the tree. The age estimates for the most recent common ancestor are listed in the table (top left). In the map to the right of the species-tree, different symbol colours indicate the collection sites of the species in the species-tree. Map created using the OmniGraffle software (v. 6.0.5; The Omni Group, Seattle, Washington, USA).





**Fig. 3** Morphological features of *Lobaria bhutanica* sp. nov. (a, d–h: Scheideg-40506; b–c: Scheideg-40476). a. Habit; b. lobe; c. ventral surface; d. apothecia; e. laminal lobules; f. thallus; g. hymenium; h. ascospores. — Scale bars: a, f = 1 cm; b–e = 1 mm; g = 50 µm; h = 10 µm.

morphological characteristics (Yoshimura 1971, Cornejo et al. 2018). From these clades, in total, 10 taxa were identified as previously described species reported from the Himalayas, Hengduan Mountains and other regions in East Asia: *L. chinensis*, *L. gyrophorica*, *L. isidiophora*, *L. kazawaensis*, *L. meridionalis*, *L. orientalis*, *L. pindarensis*, *L. sachalinensis*, *L. spatulata* and *L. yunnanensis*. The other 11 clades formed distinct branches not corresponding to any of the previously described species: *L. bhutanica*, *L. costata*, *L. devkotae*, *L. granulosa*, *L. ligulata*, *L. multipartita*, *L. perelegans*, *L. rhizinata*, *L. tibetana*, *L. verruculosa* and *L. wanglisongiana*. Cornejo et al. (2018) showed that specimens from Primorsky Krai morphologically and chemically related to *L. meridionalis* split into two well-supported monophyletic clades, and they mentioned these specimens as putatively undescribed species, *Lobaria* sp. 1a and *Lobaria* sp. 1b. Here, we report additional specimens identical with *Lobaria* sp. 1a from the Himalayas, which is described here as *L. verruculosa*. The two species *L. meridionalis* and *L. verruculosa* were well supported (96/0.99 and 94/1, respectively) in the tree resulting from the combined dataset (Fig. 1).

Overall, four species (*L. costata*, *L. pindarensis*, *L. rhizinata* and *L. yunnanensis*) of green-algal *Lobaria* were identified in the Hengduan Mountains, while two were new records for the area. Fourteen species (*L. bhutanica*, *L. costata*, *L. devkotae*, *L. granulosa*, *L. ligulata*, *L. meridionalis*, *L. multipartita*, *L. orientalis*, *L. perelegans*, *L. pindarensis*, *L. tibetana*, *L. verruculosa*, *L. wanglisongiana* and *L. yunnanensis*) were found in the Himalayas, 10 of which were new records for the region.

The time-calibrated species-tree is shown in Fig. 2. The most recent common ancestor of the green-algal *Lobaria* was estimated to have a mean age of c. 12.5 Myr, corresponding to the mid-Miocene. *Lobaria yunnanensis* was estimated to have diverged first (about 10 Myr ago) in the late Miocene. The other species are younger and speciated during the Pliocene and Pleistocene.

*Lobaria meridionalis*, *L. orientalis*, *L. sachalinensis*, *L. spatulata* and *L. verruculosa* were confirmed in the Kurile Islands, Sakhalin Island and Primorsky Krai of East Asia. *Lobaria chinensis*, *L. gyrophorica* and *L. isidiophora* were confirmed in Taiwan; *L. costata*, *L. pindarensis*, *L. rhizinata* and *L. yunnanensis* were identified in the Hengduan Mountains; and two species (*L. costata*, *L. rhizinata*) were newly found. Meanwhile, *L. bhutanica*, *L. costata*, *L. devkotae*, *L. granulosa*, *L. ligulata*, *L. multipartita*, *L. orientalis*, *L. perelegans*, *L. pindarensis*, *L. tibetana*, *L. verruculosa*, *L. wanglisongiana* and *L. yunnanensis* were identified in the Himalayas, while 10 species (*L. bhutanica*, *L. costata*, *L. devkotae*, *L. granulosa*, *L. ligulata*, *L. multipartita*, *L. perelegans*, *L. tibetana*, *L. verruculosa* and *L. wanglisongiana*) were newly found. Our findings highlight that the tectonic uplift of the Himalayas and the Hengduan Mountains systems created more favourable environmental conditions, such as new habitats and barriers to population migration and dispersal, that have increased the rate at which resident species diverge and evolve to form new ones. Compared with other green-algal *Lobaria* localities in East Asia, the Himalayas and Hengduan Mountains can therefore be considered cradles for green-algal *Lobaria* biodiversity.

## Taxonomy

***Lobaria bhutanica*** M.X. Yang & Scheid., *sp. nov.* — MycoBank MB 838325; Fig. 3

*Etymology.* 'bhutanica' refers to the known distribution of the species.

*Typus.* BHUTAN, Paro Distr., trekking path from Shinkarap to Thangthangkha, 12 Oct. 2017, C. Scheidegger, M.X. Yang, L.S. Wang, C.C. Miao (holotype Scheideg-40506).

Primary photobiont *Symbiochloris* cf. *reticulata*. Thallus medium-sized, 10–15 cm wide, lobes growing upwards, rotundate with shorter internodes near apex, axils rotundate; dorsal surface of thallus olive-ochre brown to yellowish brown in herbaria, reticulately ridged, shining; soredia and isidia absent, laminal lobules present on thallus margin; ventral surface of thallus blackish and densely tomentose in grooves between swellings, tomentose netted type, tomentum dark grey to black, 2–3 mm, sparsely rhizinate, rhizines blackish brown, up to 3 mm long, swelling pale nude.

Apothecia at margin or ridges, 0.5–1.5 cm diam, disc reddish brown, margin smooth; parathecium developed, united with edge of thalloid exciple; epithecium 10 µm thick; hypothecium 40 µm thick; hymenium c. 65–80 µm high; excipulum 35–50 µm thick. Ascospores colourless, fusoid, 3-septate at maturity, 25–40 × 4–5 µm. Pycnidia absent.

Chemical substances — Norstictic, gyrophoric, stictic and constictic acid.

Habitat — Scattered to gregarious on bark in forests, alt. 2300–3600 m.

*Additional materials examined.* BHUTAN, Paro Distr., trekking path from Gunitsawa to Shinkarap, alt. 2300–3100 m, 11 Oct. 2017, C. Scheidegger, M.X. Yang, L.S. Wang, C.C. Miao, Scheideg-40476, Scheideg-40494; trekking path from Shinkarap to Thangthangkha, alt. 3100–3600 m, 12 Oct. 2017, C. Scheidegger, M.X. Yang, L.S. Wang, C.C. Miao, Scheideg-40544.

Notes — This species is phylogenetically closely related to *L. rhizinata* and *L. granulosa*, and these three species also share a similar chemistry. However, the diagnostic characteristics for *L. bhutanica* are: absence of isidia and soredia, lobes rotundate, with shorter internodes near apex, axils rotundate, and the thin thalline margin and proper exciple are well connected in fully developed apothecia. The diagnostic characteristics for *L. rhizinata* are: absence of isidia and soredia, lobes growing upwards canalculated truncate, with longer internodes near apex, and absence of apothecia. The diagnostic characteristic for *L. granulosa* is: presence of knob-like isidia.

***Lobaria costata*** M.X. Yang & Scheid., *sp. nov.* — MycoBank MB 838330; Fig. 4

*Etymology.* 'costata' refers to the pronounced ridges on the lobes.

*Typus.* CHINA, Yunnan Prov., Lijiang Ci., Laojunshan Mt, along the downhill roadside, on bark, 5 July 2017, C. Scheidegger, L.S. Wang, M.X. Yang, C.C. Miao (holotype Scheideg-40081).

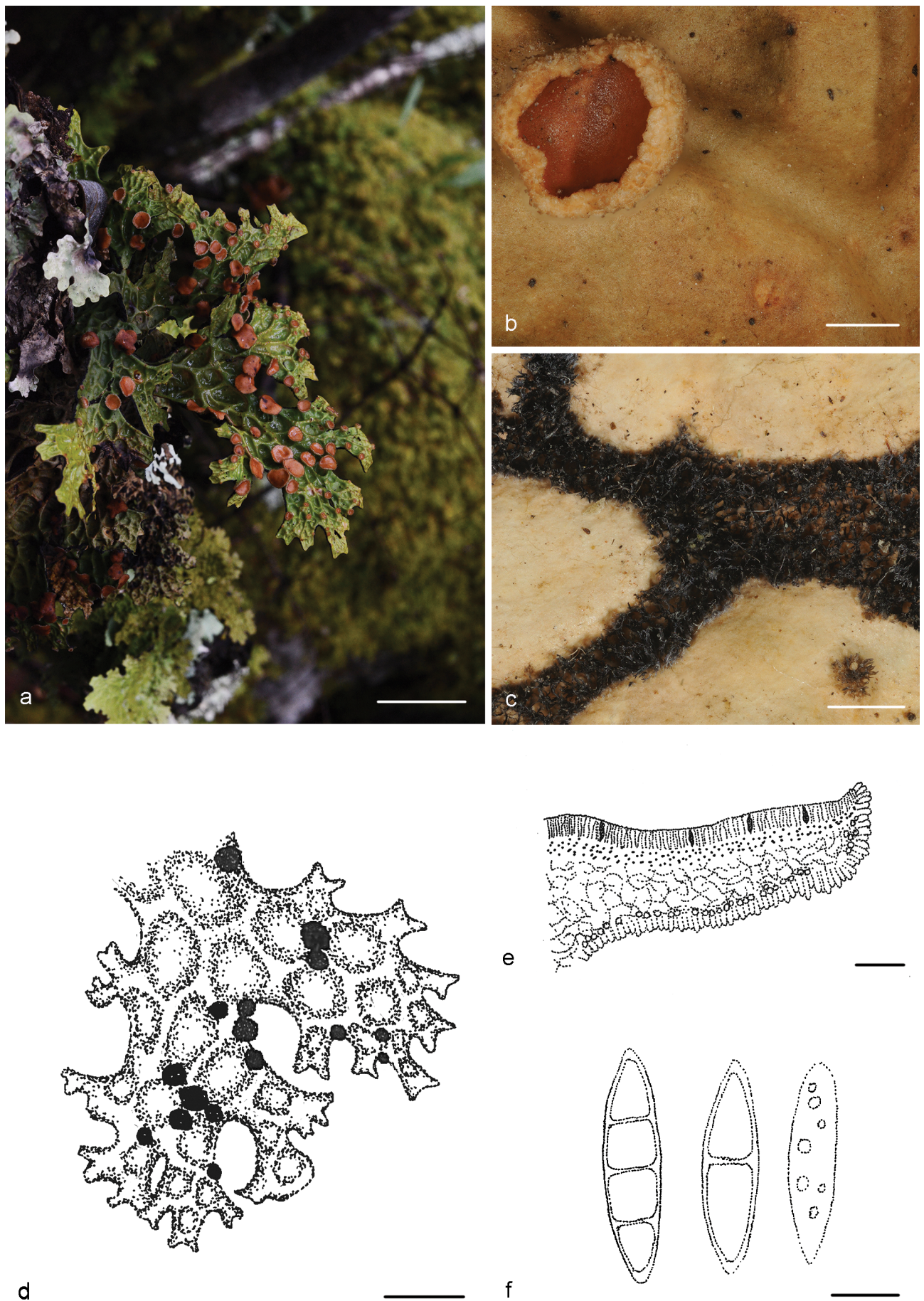
Primary photobiont *Symbiochloris* cf. *reticulata*. Thallus medium sized, up to 10 cm wide, irregularly laciniate-lobate, lobe with longer internodes near apex, apex more or less truncate or tapered; dorsal surface olive-ochre brown to yellowish brown in herbaria, reticulated ridge, distinctly reticulated, ridges prominent, narrow, glabrous and shining, foveae quadrangular, distinctly deepened, clear ridges look like protruding bones; soredia, isidia and laminal lobules absent; ventral surface of thallus blackish and densely tomentose in grooves between swellings, tomentose netted type, tomentum dark grey to black, 2–3 mm, sparsely rhizinate, rhizines blackish brown, up to 3 mm long, swelling pale nude.

Apothecia at margin or ridges, 0.5–3 cm diam, disc reddish brown, margin smooth, cortex thin at margin but connate with the parathecium, parathecium well developed; epithecium c. 10 µm thick; hypothecium 25 µm thick; hymenium c. 40–50 µm high; excipulum 40–50 µm thick. Ascospores colourless, fusoid, 3-septate at maturity, 25–35 × 5–6.5 µm. Pycnidia absent.

Chemical substances — Gyrophoric and stictic acid.

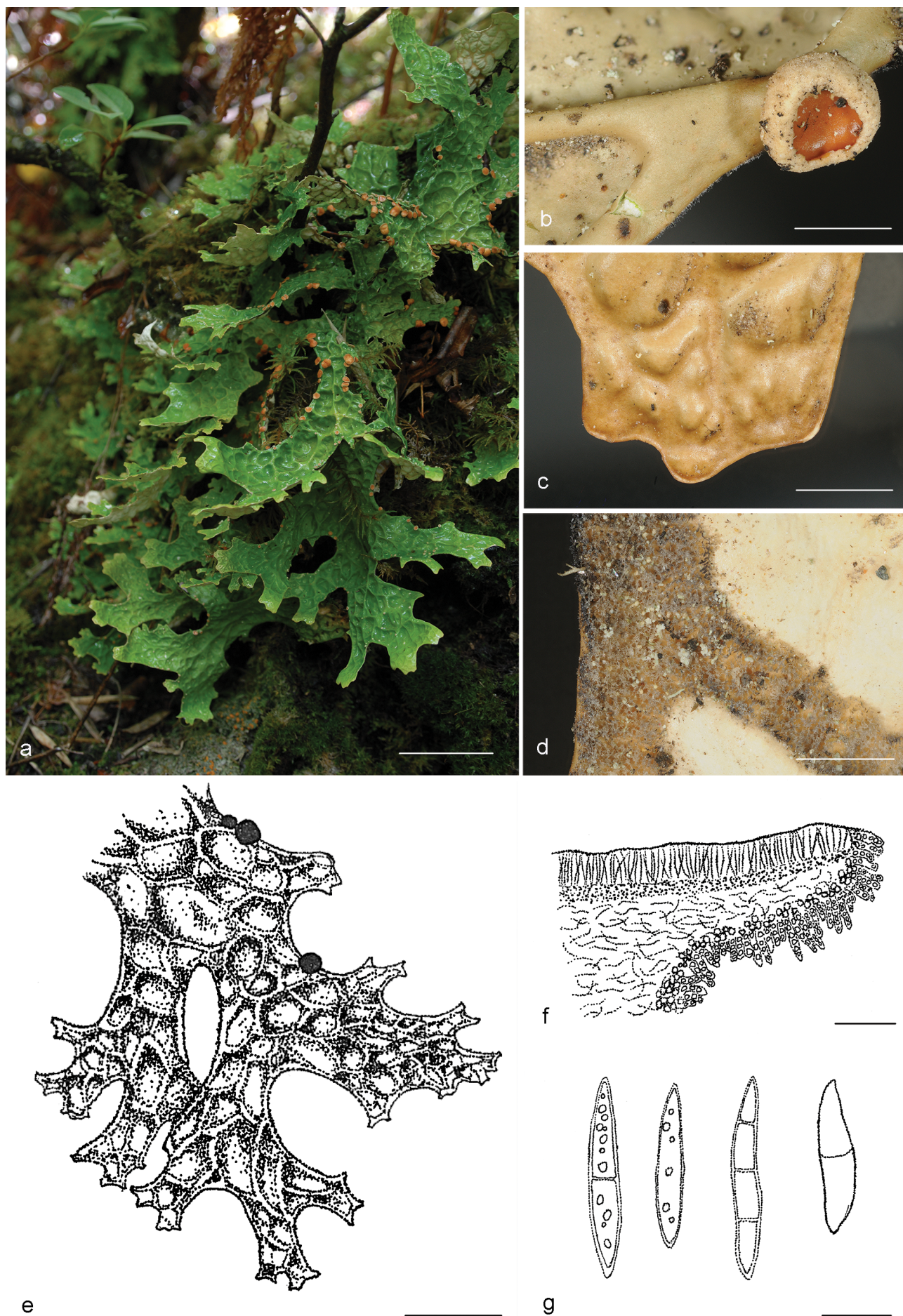
Habitat — Scattered to gregarious on bark in forests dominated by *Quercus* or on soil, alt. 2680–3675 m.





**Fig. 4** Morphological features of *Lobaria costata* sp. nov. (a: KUN-16-53628; b–c, e–f: Scheideg-40081, d: 19-65719). a. Habit; b. apothecia; c. ventral surface; d. thallus; e. hymenium; f. ascospores. — Scale bars: a = 1 cm; b–c = 1 mm; d = 0.5 cm; e = 50  $\mu$ m; f = 10  $\mu$ m.





**Fig. 5** Morphological features of *Lobaria devkotae* sp. nov. (holotype, KUN-19-64564). a. Habit; b. apothecia; c. lobe; d. ventral surface; e. thallus; f. hymenium; g. ascospores. — Scale bars: a–e = 1 cm; b–d = 1 mm; f = 50  $\mu$ m; g = 10  $\mu$ m.



**Additional materials examined.** CHINA, Yunnan Prov., Lijiang Ci., Laojunshan Mt, along the downhill roadside, alt. 3469.6 m, N26°64'92.7" E99°78'30.6", 5 July 2017, C. Scheidegger, L.S. Wang, M.X. Yang, C.C. Miao, Scheideg-40112; Xizang Prov., Dingqing Co., Jueen Vil., soil slope beside G324, alt. 3675 m, N31°14'52.78" E95°54'36.32", 2 Oct. 2016, L.S. Wang, M.X. Yang et al., KUN-16-53628; Bomi Co., Guxiang Vil., forest beside G318 road, alt. 2680 m, N29°53'58.02" E95°30'27.65", 24 Sept. 2016, L.S. Wang et al., KUN-16-52050.

**Notes** — *Lobaria costata* is characterised by a lobe with longer internodes near apex, apex more or less truncate or tapered, clear ridges look like protruding bones; soredia, isidia and laminal lobules absent. This species has a similar morphology to that of *L. yunnanensis*. However, *L. yunnanensis* is easily distinguished by dense irregularly laciniate-lobate and no chemistry (Yoshimura 1971), while *L. costata* has gyrophoric and stictic acid.

***Lobaria devkotae*** M.X. Yang & Scheid., *sp. nov.* — MycoBank MB 838326; Fig. 5

**Etymology.** 'devkotae' means in honour of Dr Shiva Devkota, who studied the related *L. pindarensis* in Nepal.

**Typus.** CHINA, Xizang Prov., Bayi Distr., on bark, 14 July 2019, L.S. Wang, M.X. Yang et al. (holotype KUN-19-64564).

Primary photobiont *Symbiochloris* cf. *reticulata*. Thallus medium to large, 10–20 cm wide, lobes growing upwards canaliculate

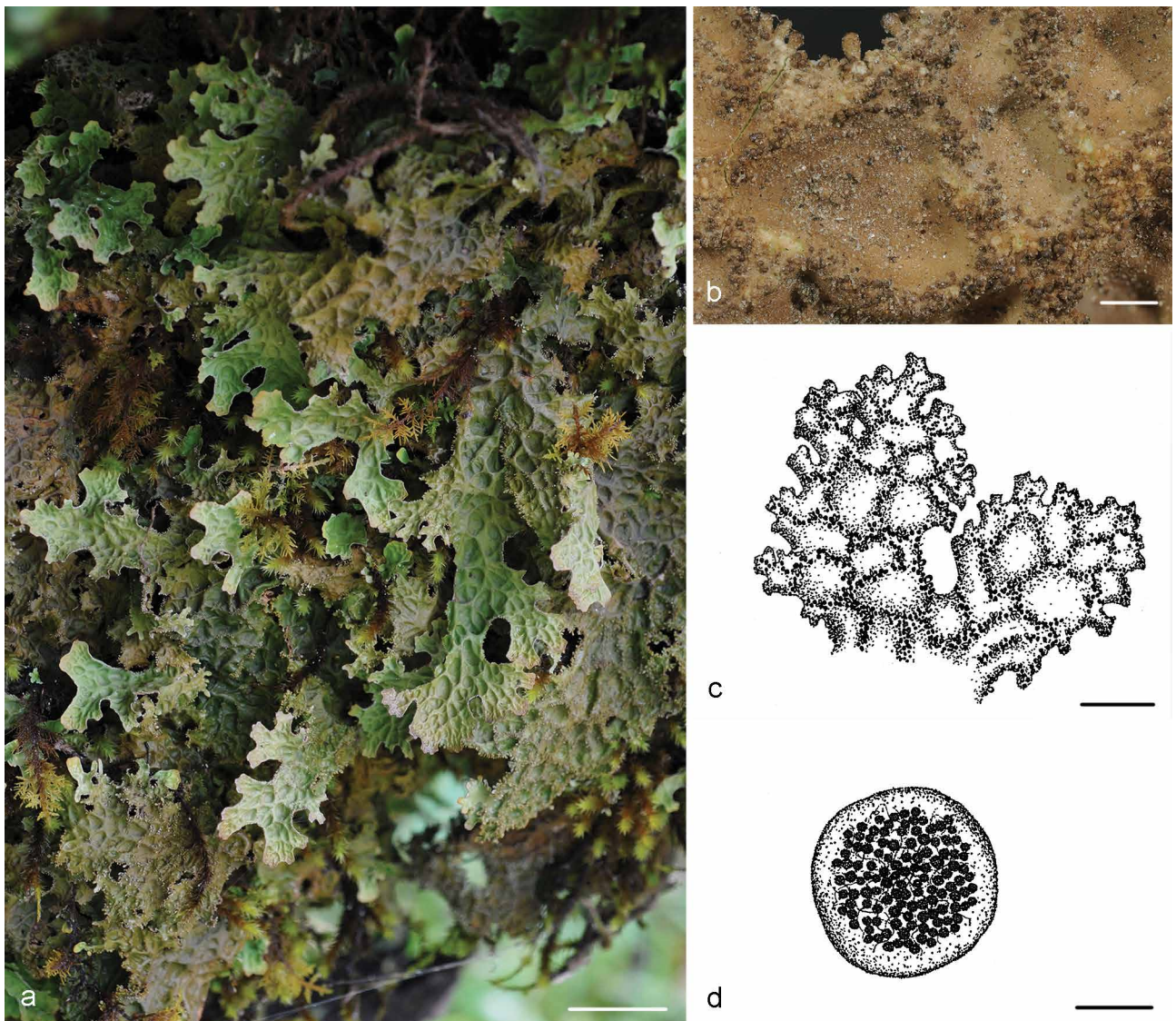
truncate, with shorter internodes near apex, closely adnate to substrate, elongate, acuminate to truncate, axils rotundate; dorsal surface vivid-green when fresh, olive-ochre brown to yellowish brown in herbaria, distinctly reticulate, ridges prominent, narrow, glabrous and shining, foveae quadrangular, distinctly deepened; soredia, isidia and laminal lobules absent; ventral surface pale brown to yellow-white, tomentum netted and in grooves between foveae, brown to black, 1–3 mm, rhizines scattered, 2–4 mm long.

Apothecia at margin or on ridges, 0.5–1.5 cm diam, disc reddish brown, margin crenulate, cortex thin at margin but connate with the parathecium; epitecium 10 µm thick; hypothecium 25 µm thick; hymenium c. 60–70 µm high; excipulum 50–70 µm thick. Ascospores colourless, fusoid, 3-septate at maturity, 30–40 × 5–6 µm. Pycnidia conspicuous, immersed on ridges and at margin; conidia rod-shaped.

**Chemical substances** — Gyrophoric, stictic, constictic and hypoconstictic acid.

**Habitat** — Scattered to gregarious on bark in forests dominated by *Quercus*; restricted to a few localities, rare, alt. 2892–3490 m.

**Additional materials examined.** CHINA, Xizang Prov., Bomi Co., alt. 3490 m, N29°48'31" E95°41'58", 10 Nov. 2018, L.S. Wang, M.X. Yang et al., KUN-18-62315; Bayi Distr., Lulang Town, alt. 2892 m, N29°49'344.28" E94°47'10.80", 19 July 2019, L.S. Wang, M.X. Yang, X.Y. Wang et al., KUN-XY19-1105.



**Fig. 6** Morphological features of *Lobaria granulosa* sp. nov. (holotype, KUN-XY19-1128). a. Habit; b. isidia; c. thallus; d. isidia cross-section. — Scale bars: a = 1 cm; b = 1 mm; c = 0.5 cm; d = 0.2 mm.



Notes — *Lobaria devkotae* is phylogenetically related to *L. pindarensis*, and these two species have common characteristics, such as a truncate or obtuse apex. However, *L. devkotae* can be easily distinguished from *L. pindarensis* by the lack of isidia and norstictic acid.

***Lobaria granulosa*** M.X. Yang & Scheid., *sp. nov.* — MycoBank MB 838307; Fig. 6

*Etymology.* We named this species after the short and globular isidia.

*Typus.* CHINA, Xizang Prov., Bayi Distr., Bayi Town, on bark, 20 July 2019, L.S. Wang, X.Y. Wang, M.X. Yang et al. (holotype KUN-XY19-1128).

Primary photobiont *Symbiochloris* cf. *reticulata*. Thallus medium-sized, 10–12 cm wide, pruinose present on the foveae of thallus, lobes truncate at apex, with shorter internodes near apex, axils rotundate; dorsal surface of thallus olive-ochre brown to yellowish brown in herbaria, reticulate ridged, prominent, narrow, pruinose and matte, foveae quadrangular,

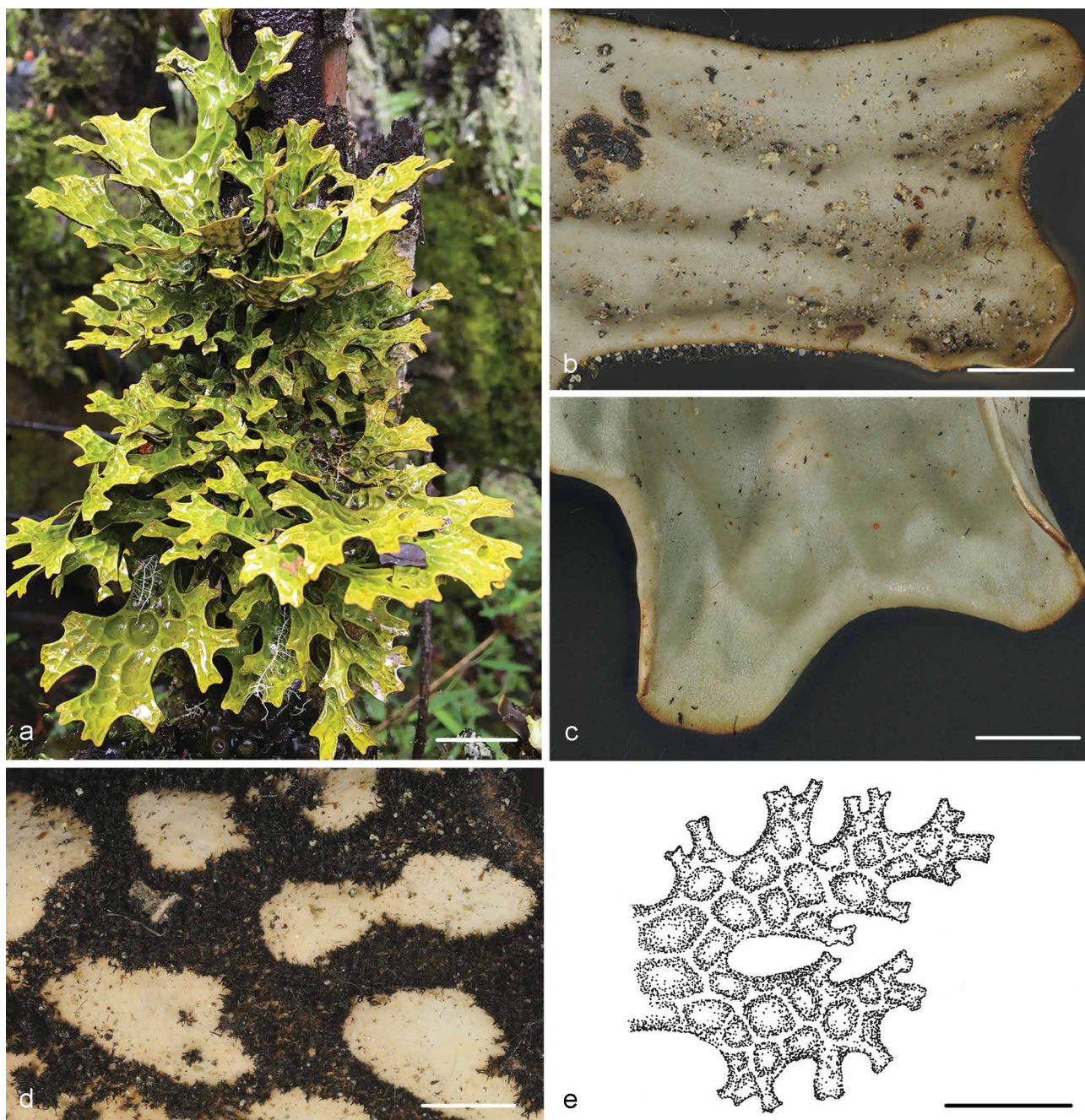
distinctly deepened; isidiate at ridges and margins, isidia sprout spherically on young lobes, knob-like and densely clustered on older lobes, or occasionally small lobed isidia mainly along margin, tips of isidia dark brown; ventral surface of thallus densely netted tomentose in grooves between nude, tomentum light to dark grey, 2–3 mm, pale swelling, rhizines sparse, 2–3 mm. Apothecia and pycnidia absent.

Chemical substances — Norstictic, gyrophoric, stictic and constictic acid.

Habitat — Scattered to gregarious on bark in forests, alt. 3034–3200 m.

*Additional material examined.* BHUTAN, Gasa Distr., Laya to Tongsheja (camp at river), alt. 3200 m, 22 Oct. 2017, C. Scheidegger, M.X. Yang, L.S. Wang, C.C. Miao, Scheideg-40629, Scheideg-40635.

Notes — *Lobaria granulosa* and *L. rhizinata* are phylogenetically closely related and share a similar chemistry. They are distinguished by the absence or presence of isidia.



**Fig. 7** Morphological features of *Lobaria ligulata* sp. nov. (a–b, e: KUN-XY19-1114; c–d: KUN-XY19-1119). a. Habit; b. dorsal surface; c. lobe; d. ventral surface; e. thallus. — Scale bars: a = 0.5 cm; b–d = 1 mm; e = 1 cm.



***Lobaria ligulata*** M.X. Yang & Scheid., *sp. nov.* — MycoBank MB 838331; Fig. 7

*Etymology.* 'ligulata' refers to the shape of the terminal lobes.

*Typus.* CHINA, Xizang Prov., Bayi Distr., Lulang Town, on bark, 19 July 2019, L.S. Wang, X.Y. Wang, M.X. Yang *et al.* (holotype KUN-XY19-1114).

Primary photobiont *Symbiochloris* cf. *reticulata*. Thallus small to medium, 5–10 cm, dense irregularly lacinate-lobate, lobes slender, antler-like, with longer internodes near apex, apex more or less truncate, axils rotundate; dorsal surface of thallus bright yellowish green when wet, olive-ochre green in herbaria, reticulate ridged, shining; soredia, isidia and laminal lobules absent;

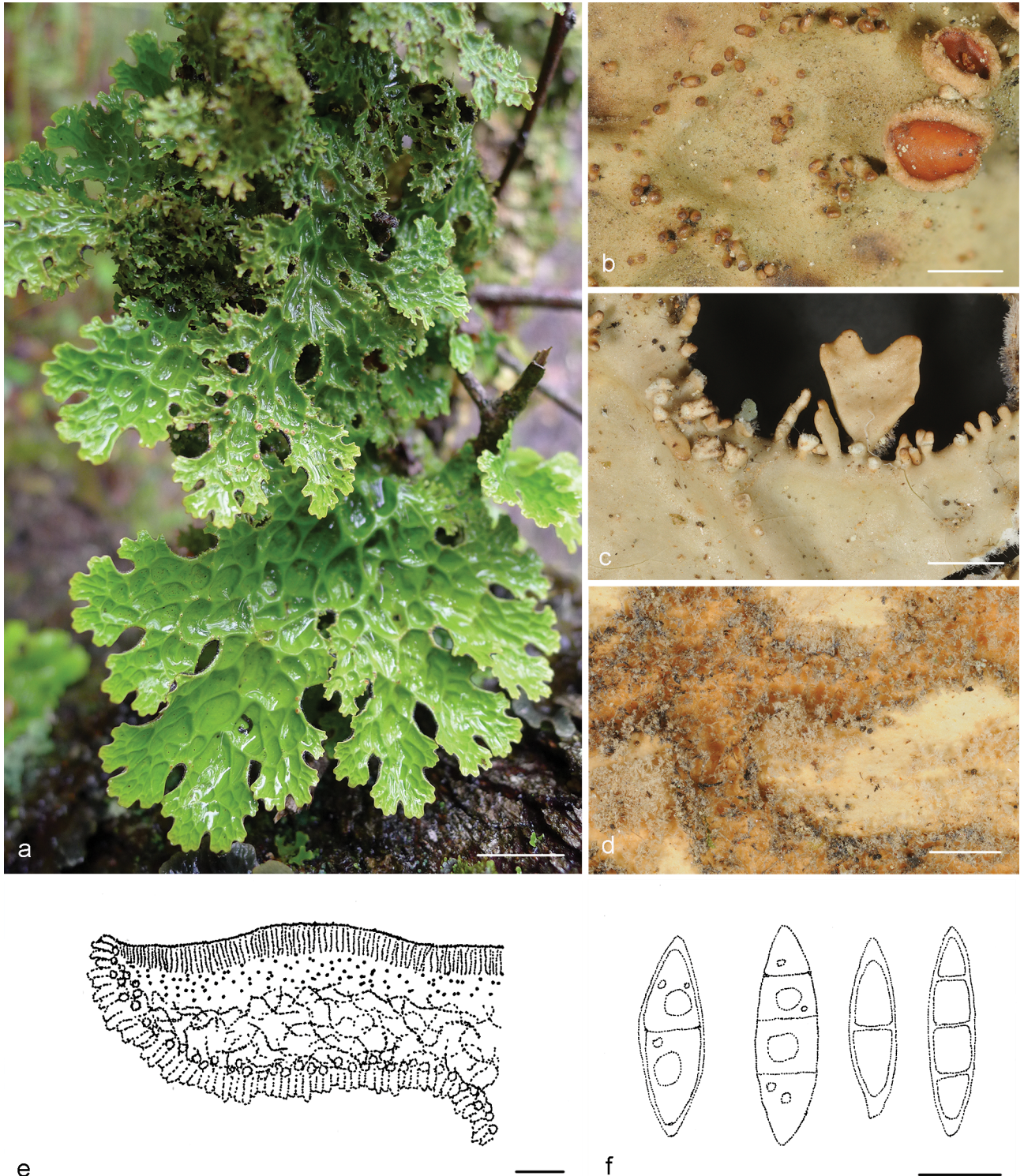
ventral surface of thallus blackish and densely tomentose in grooves between swellings, tomentose netted type, tomentum dark grey to black, 1–2 mm, sparsely rhizinate, rhizines blackish brown, up to 2 mm long, swelling pale nude.

Apothecia and pycnidia absent.

Chemical substances — Stictic, hypoconstictic and constictic acid.

Habitat — Scattered to gregarious on bark in forest, alt. 2818 m.

*Additional material examined.* CHINA, Xizang Prov., Bayi Distr., Lulang Town, alt. 2818 m, N29°53'01.14" E94°47'10.91", 19 July 2019, L.S. Wang, X.Y. Wang, M.X. Yang *et al.*, KUN-XY19-1114.



**Fig. 8** Morphological features of *Lobaria multipartita* sp. nov. (a: KUN-19-63350; b–f: KUN-XY19-525; c–d: Scheideg-40459). a. Habit; b. apothecia; c. isidia; d. ventral surface; e. hymenium; f. ascospores. — Scale bars: a = 1 cm; b–d = 1 mm; e = 50  $\mu$ m; f = 10  $\mu$ m.



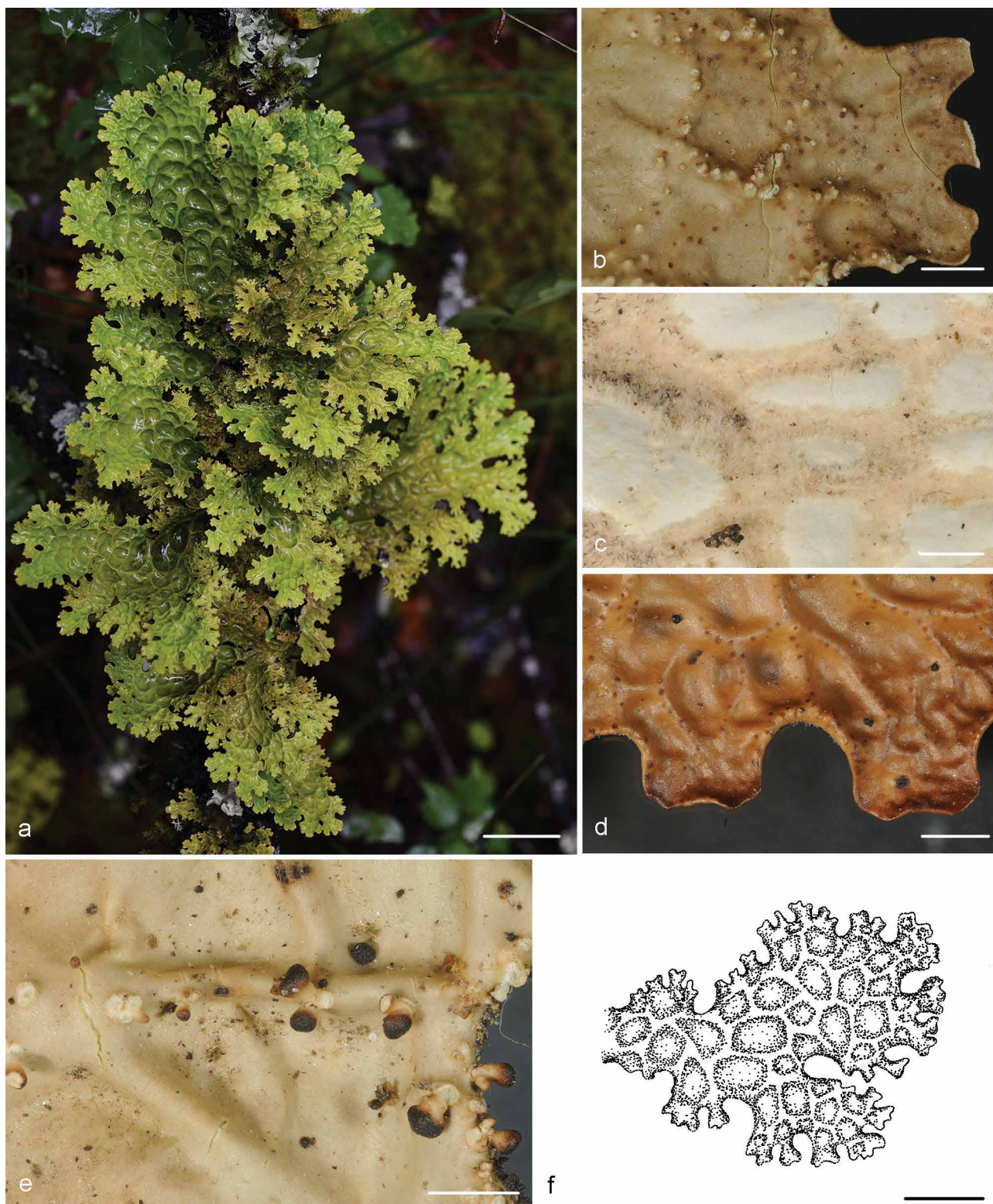
Notes — *Lobaria ligulata* is characterised by a relatively small thallus, dense lacinate-lobate, slender lobes, absence of soredia, isidia, laminal lobules and apothecia. This species is similar to *L. yunnanensis* (Yoshimura 1971), but *L. yunnanensis* differs in that it has apothecia and no chemical substances.

***Lobaria multipartita*** M.X. Yang & Scheid., *sp. nov.* — MycoBank MB 838328; Fig. 8

*Etymology.* 'multipartita' refers to the multifold lobation of the thallus.

*Typus.* CHINA, Xizang Prov., Bomi Co., Gu Vil., on route from Bomi to Linzhi, on bark, 19 July 2019, L.S. Wang, X.Y. Wang, M.X. Yang et al. (holotype KUN-XY19-525).

Primary photobiont *Symbiochloris* cf. *reticulata*. Thallus medium to large, up to 20 cm wide, divaricate or irregularly dichotomous, lobes > 5 mm long, 3–4 mm wide, apex more or less cut off or rounded, blunt or rounded joints; dorsal surface of thallus olive-ochre, reticulate ridged, pruina present on tips of lobes; isidiate at ridges and margins, isidia sprout spherically on young lobes, single isidia cylindrical to spatulate on mature lobes, always spatulate along margin, tips of isidia dark brown;



**Fig. 9** Morphological features of *Lobaria perelegans* sp. nov. (a–b: KUN-19-65719; c–e: Scheideg-40623). a. Habit; b. dorsal surface; c. ventral surface; d. lobe; e. isidia; f. thallus. — Scale bars: a = 1 cm; b–e = 1 mm; f = 0.5 cm.



ventral surface pale yellow or white, dense light brown to dark brown short tomentum in the grooves between the swellings, tomentum netted type, with sparse rhizines up to 3–4 mm.

Apothecia grow on reticulated ridges or margins, strongly constricted at base, disc light reddish brown to dark brown, 0.5–3 mm diam; epithecium c. 10 µm; hypothecium 30–50 µm thick; hymenium c. 40–50 µm high; excipulum 30–40 µm thick. Ascospores colourless, fusoid, straight to slightly curved, 3-septate at maturity, 20–25 × 5–6.5 µm. Pycnidia buried in the thallus close to the lobes; conidia rod-shaped, 6 × 1 µm.

Chemical substances — Gyrophoric and stictic acid.

Habitat — Scattered to gregarious on bark in forests, alt. 2300–3100 m.

*Additional materials examined.* BHUTAN, Paro Distr., Taktshang (Tiger's Nest), alt. 2300–3100 m, 9 Oct. 2017, C. Scheidegger, Scheideg-40459. — CHINA, Xizang Prov., Bomi Co., Gu Vil., on route from Bomi to Linzhi, alt. 2633 m, N29°54'02.18" E95°35'55.96", 18 July 2019, L.S. Wang, X.Y. Wang, M.X. Yang *et al.*, KUN-XY19-501; G318, 20 km from Bomi, alt. 2888 m, N29°47'06.21" E95°54'19.47", 13 July 2019 (KUN-19-63350).

Notes — This species has a similar morphology to that of *L. orientalis* and *L. gyrophorica*. *Lobaria multipartita* is easily distinguished from the two other species by its spatulate isidia

on the margins. Additionally, *L. orientalis* lacks isidia and has norstic, gyrophoric and stictic acid (Yoshimura 1971). *Lobaria gyrophorica* can be easily distinguished by its lack of isidia and presence of gyrophoric acid.

***Lobaria perelegans*** M.X. Yang & Scheid., *sp. nov.* — MycoBank MB 838329; Fig. 9

*Etymology.* 'perelegans' refers to the very elegant, symmetric subdivision of the lobes.

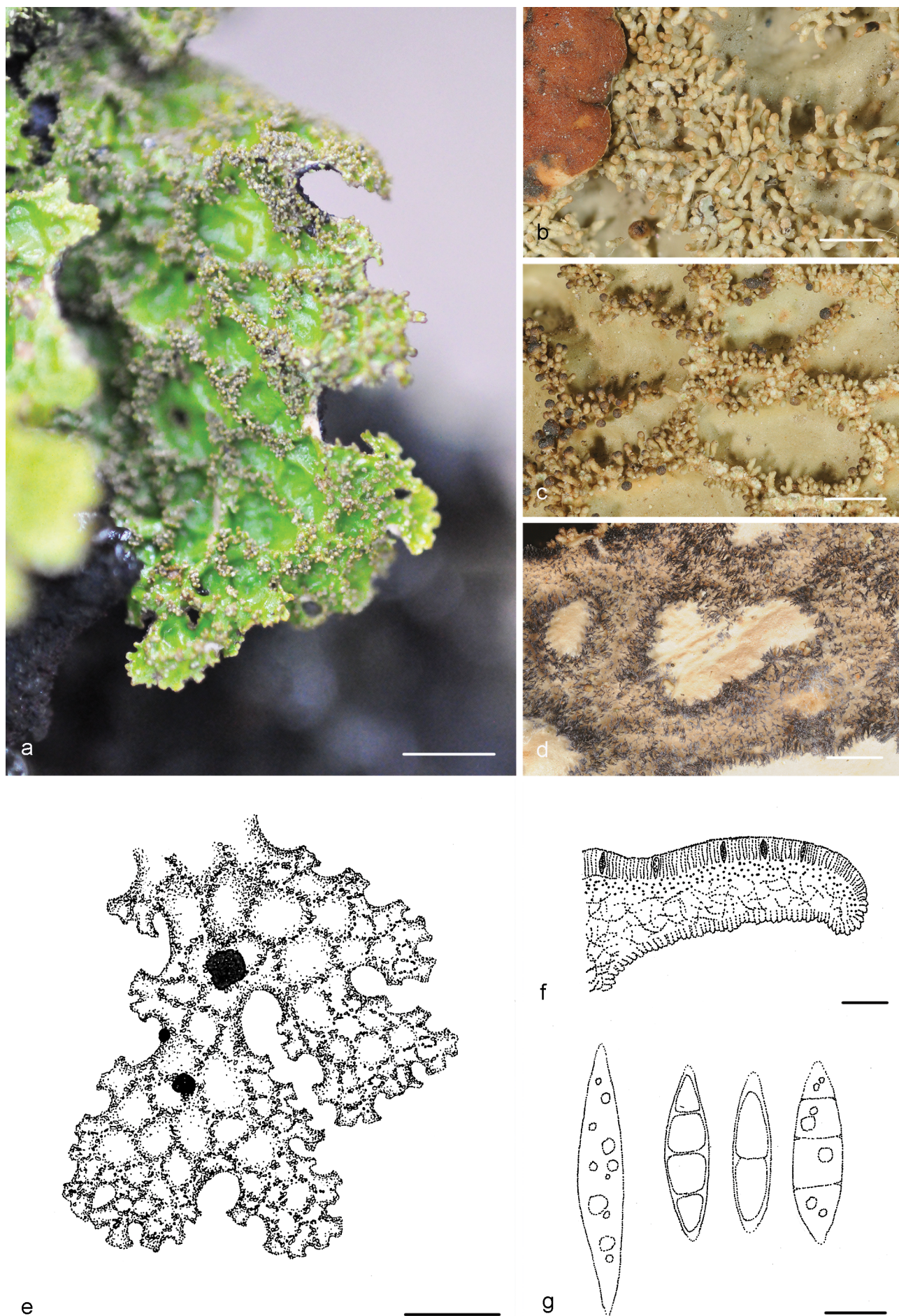
*Typus.* CHINA, Xizang Prov., Dingjie Co., Chentang Town, on bark, 28 July 2019, L.S. Wang, M.X. Yang *et al.* (holotype KUN-19-65719).

Primary photobiont *Symbiochloris cf. reticulata*. Thallus medium sized, 10–15 cm wide, reticulated ridge, lobe with shorter internodes near apex, apex more or less truncate; dorsal surface bright vivid-green when wet, olive-ochre green in fungaria, reticulated ridge; isidiate at ridged portions and margins, sometimes also present at foveae, knob-like isidia multiple in group or single isidia-scattered, always blastidiate, dark brown on the tips, often because of infections with *Tremella* sp.; ventral surface pale yellow or white, dense light brown short tomentose



**Fig. 10** Morphological features of *Lobaria rhizinata* sp. nov. (a, d: Scheideg-40411; b–c: Scheideg-40362). a. Habit; b. lobe; c. ventral surface; d. thallus. — Scale bars: a, d = 1 cm; b, c = 1 mm.





**Fig. 11** Morphological features of *Lobaria tibetana* sp. nov. (a: KUN-XY19-1007, b–f: KUN-18-62299). a. Habit; b, c. isidia and apothecia; d. ventral surface; e. thallus; f. hymenium; g. ascospores. — Scale bars: a, e = 1 cm; b–d = 1 mm; f = 50  $\mu$ m; g = 10  $\mu$ m.



in the grooves between the swellings, tomentose veined type, with sparse rhizines up to 3–4 mm.

Apothecia and pycnidia absent.

Chemical substances — Gyrophoric and stictic acid.

Habitat — Scattered to gregarious on bark in forests, alt. 3028–3200 m.

*Additional material examined.* BHUTAN, Gasa Distr., Laya to Tongsheja (camp at river), alt. 3200 m, 22 Oct. 2017, C. Scheidegger, Scheideg-40623.

*Notes* — *Lobaria perelegans* is phylogenetically closely related to *L. multipartita* and *L. gyrophorica*. However, *L. perelegans* is characterised by symmetric subdivisions of the lobes, and knob-like or blastidiate isidia, while *L. gyrophorica* has irregularly dichotomous lobes and apices more or less cut off or rounded, and lacks isidia; *L. multipartita* has divaricate or irregularly dichotomous lobes, and cylindrical and spatulate isidia on the margins. Additionally, based on the species-tree, we found the existence of species-pairs: *L. gyrophorica* (sexual species) regularly forms apothecia, while *L. perelegans* (asexual species) regularly forms isidia and apothecia are absent.

***Lobaria rhizinata*** M.X. Yang & Scheid., *sp. nov.* — MycoBank MB 838327; Fig. 10

*Etymology.* 'rhizinata' refers to the characteristic rhizinae formed on the lower side of the thallus.

*Typus.* CHINA, Yunnan Prov., Shaggrila Ci., Tianbao Mt, on Rocky screes, 7 Aug. 2017, C. Scheidegger, M.X. Yang, L.S. Wang, C.C. Miao (holotype Scheideg-40411).

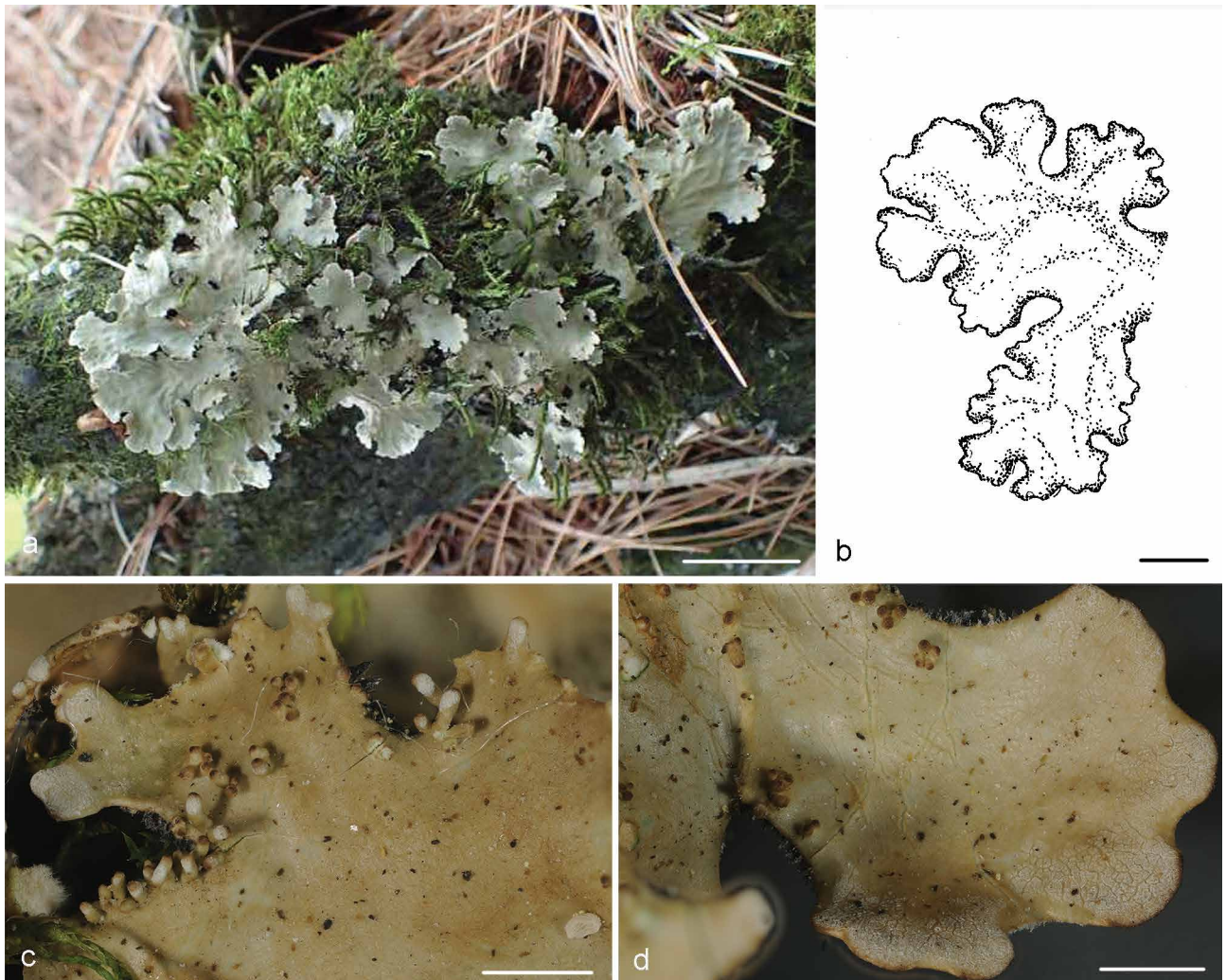
Primary photobiont *Symbiochloris* cf. *reticulata*. Thallus medium-sized, 10–12 cm wide, lobes growing upwards canaliculate truncate, lobes growing horizontally and downwards raised from substrate, with longer internodes near apex, elongate, acuminate to truncate, axils tapered; dorsal surface olive-ochre brown to yellowish brown in herbaria, oil-shiny, irregularly ridged, distinctly reticulate, distinctly deepened; soredia, isidia and laminal lobules absent; ventral surface of thallus blackish brown and densely tomentose on older portions and in grooves between swellings, dark grey to black, 2–3 mm, sparsely rhizinate, rhizines blackish brown, up to 3 mm long, swelling pale nude. Apothecia and pycnidia absent.

Chemical substances — Norstictic, gyrophoric, stictic and constictic acid.

Habitat — Scattered to gregarious on rocky screes, alt. 3724–3736 m.

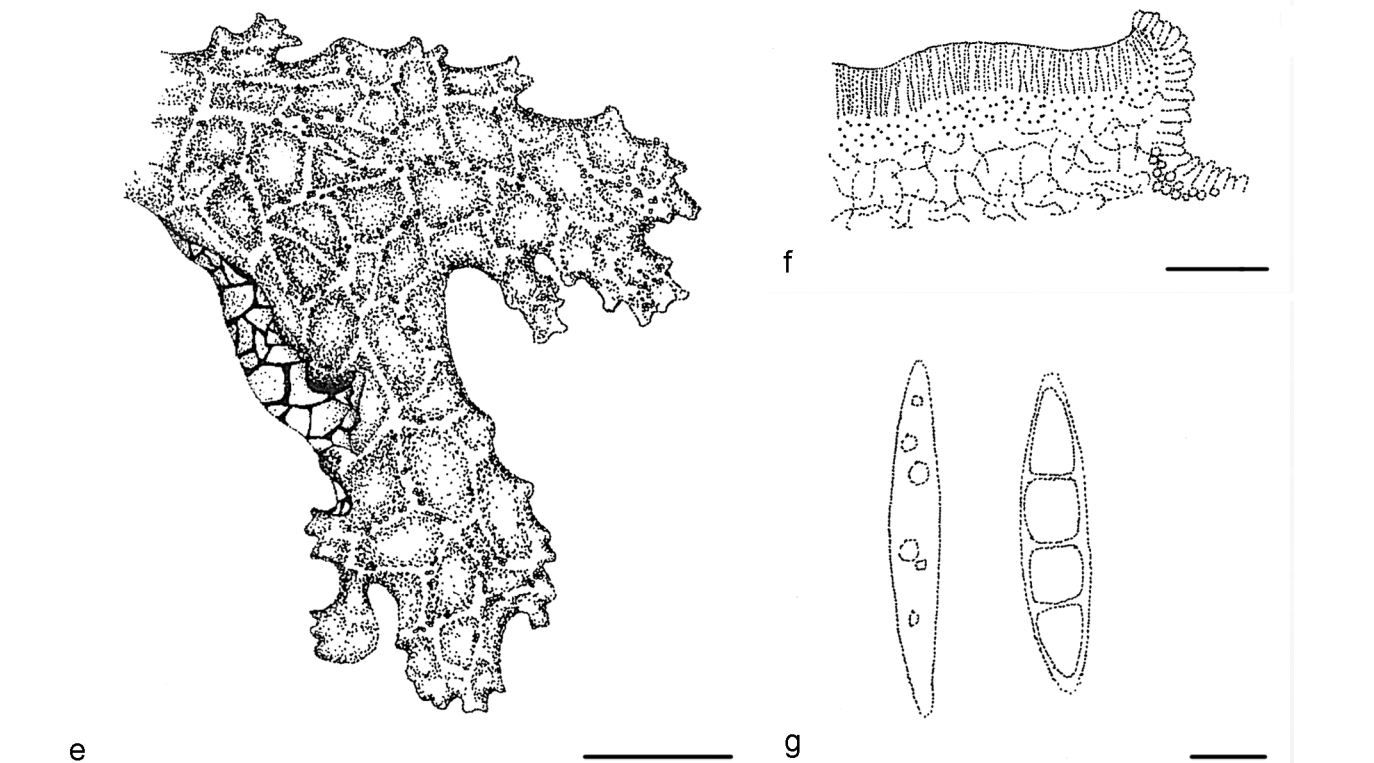
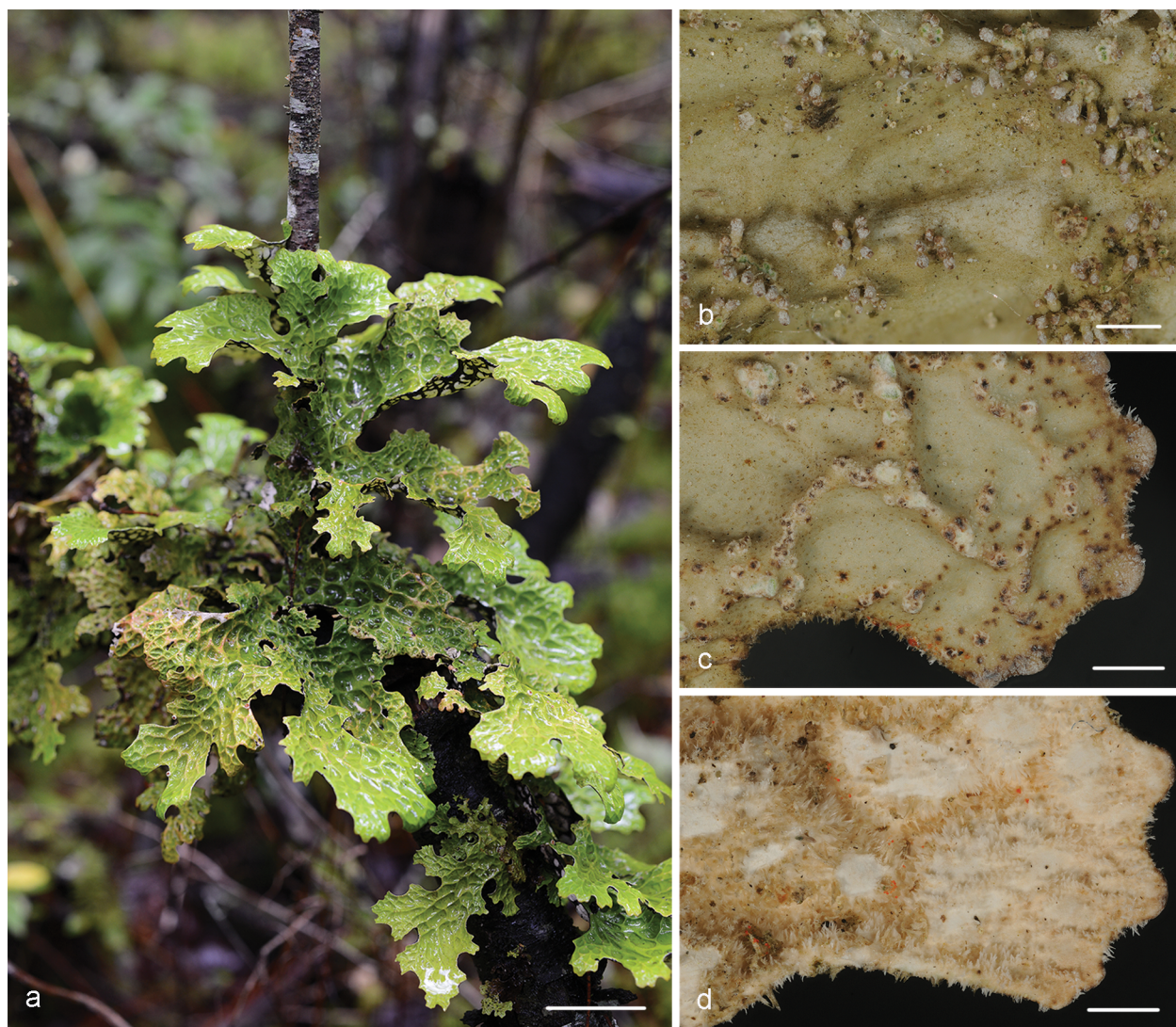
*Additional materials examined.* CHINA, Yunnan Prov., Shaggrila Ci., Tianbao Mt, Rocky screes, 7 Aug. 2017, alt. 3724.6 m, N27°60'30.6" E99°89'58.8", C. Scheidegger, M.X. Yang, L.S. Wang, C.C. Miao (Scheideg-40332); alt. 3728.7 m, N27°60'30.6" E99°89'60.2", 7 Aug. 2017, C. Scheidegger, M.X. Yang, L.S. Wang, C.C. Miao, Scheideg-40362; alt. 3734.1 m, N27°60'31.5" E99°89'64.3", 7 Aug. 2017, C. Scheidegger, M.X. Yang, L.S. Wang, C.C. Miao, Scheideg-40396.

*Notes* — *Lobaria rhizinata* is characterised by blackish brown rhizines formed on the lower side of the thallus, tapered axils of lobes, irregular ridges, and an absence of soredia, isidia, laminal lobules and apothecia. This species has a similar morphology to that of *L. ligulata*, which makes it difficult to distinguish these



**Fig. 12** Morphological features of *Lobaria verruculosa* sp. nov. (holotype, KUN-XY19-505). a. Habit; b. thallus; c. isidia; d. lobe. — Scale bars: a = 1 cm; b = 0.5 cm; c–d = 1 mm.





**Fig. 13** Morphological features of *Lobaria wanglisongiana* sp. nov. (holotype, KUN-XY19-1049). a. Habit; b. isidia; c. lobe; d. ventral surface; e. thallus; f. hymenium; g. ascospores. — Scale bars: a = 1 cm; b–d = 1 mm; e = 0.5 cm; f = 2 mm; g = 5  $\mu$ m.



two species in the field. However, the lobes of *L. rhizinata* are wider and acuminate to truncate, while *L. ligulata* is more densely lacinate-lobate and forms slender lobes. Additionally, *L. ligulata* lacks gyrophoric and norstictic acid.

***Lobaria tibetana*** M.X. Yang & Scheid., *sp. nov.* — MycoBank MB 838327; Fig. 11

*Etymology.* 'tibetana' refers to the known distribution of the species.

*Typus.* CHINA, Xizang Prov., Bomi Co., Prope Bomi Co., on bark, 18 July 2019, L.S. Wang, X.Y. Wang, M.X. Yang *et al.* (holotype KUN-XY19-1007).

Primary photobiont *Symbiochloris* cf. *reticulata*. Thallus medium to large, 10–20 cm wide, with shorter internodes near apex, apex more or less truncate; dorsal surface of thallus olive-ochre green in herbaria, distinctly reticulate ridged, ridges prominent, narrow, glabrous, foveae quadrangular, distinctly deepened, pruina present or absent on the lobes; isidia coralloid, clustered or single, cylindrical form at ridges and margins, often with black *Tremella* on the tips of isidia; ventral surface of thallus pale brown, densely netted type tomentum and rhizinate in grooves between swellings, rhizines and tomentum brown, both c. 3 mm long.

Apothecia very rare, mostly on ridges, 0.5–1.5 cm diam, disc reddish brown; parathecium poorly developed; epithecium 10 µm thick; hypothecium 25–40 µm thick; hymenium c. 40–50 µm high; excipulum 25 µm thick; ascospores fusoid, 3-septate at maturity, 25–30 × 5–6.5 µm; pycnidia absent.

Chemical substances — Gyrophoric and stictic acid.

Habitat — Scattered to gregarious on bark in *Abies* forests or on other trees, alt. 2300–3900 m.

*Additional materials examined.* BHUTAN, Paro Distr., Chele la pass and nun monastery, alt. 2300–3900 m, 10 Oct. 2017, C. Scheidegger, L.S. Wang, M.X. Yang, C.C. Miao, Scheideg-40473; trekking path from Shinkarap to Thangthangkha, alt. 3100–3600 m, 12 Oct. 2017, C. Scheidegger, L.S. Wang, M.X. Yang, C.C. Miao, Scheideg-40538. — CHINA, Xizang Prov. Bomi Co., alt. 3490 m, N29°48'31" E95°41'58", 10 Nov. 2018, L.S. Wang, M.X. Yang, X.Y. Wang *et al.*, KUN-18-62299.

Notes — *Lobaria tibetana* is characterised by the cylindrical or knob-like isidia and always has black *Tremella lobariacearum* growing on the tips of some of the isidia. This species is phylogenetically closely related to *L. orientalis*. However, *L. orientalis* lacks isidia (Yoshimura 1971) and contains norstictic acid, gyrophoric acid, stictic acid and constictic, while *L. tibetana* contains only gyrophoric acid and stictic acid.

***Lobaria verruculosa*** M.X. Yang & Scheid., *sp. nov.* — MycoBank MB 838332; Fig. 12

*Etymology.* 'verruculosa' refers to the form of the isidia.

*Typus.* CHINA, Xizang Prov., Bomi Co., on route from Bomi to Linzhi, on bark, 18 July 2019, L.S. Wang, X.Y. Wang, M.X. Yang *et al.* (holotype KUN-XY19-505).

Primary photobiont *Symbiochloris* cf. *reticulata*. Thallus medium, 10–15 cm, irregularly lobate, lobes apex wide circle, axils rotundate; dorsal surface of thallus smooth, reticulately ridged but not obviously so, grey green when wet, olive-ochre green in herbaria, pruina present on the margins of lobes; isidiate at ridged portions and margins, isidia normally verrucose, aggregated in clusters or rarely single cylindrical form at margins; ventral surface of thallus yellowish brown, densely tomentose in grooves between swellings, tomentum netted, brown, 1–2 mm, sparsely rhizinate, rhizines light brown to dark brown, up to 2 mm long, swelling pale nude. Apothecia and pycnidia absent.

Chemical substances — Stictic and constictic acid.

Habitat — Scattered to gregarious on bark in forest, always along with moss, alt. 2636 m.

Notes — *Lobaria verruculosa* is characterised by an apex wide circle of thallus, and verrucose aggregated isidia on upper surface. This species is phylogenetically closely related to *L. kazawaensis* and its isidia have a similar form, but *L. kazawaensis* contains retigeric acid while *L. verruculosa* contains stictic acid and constictic acid. Furthermore, the dorsal surface of *L. verruculosa* is smooth to reticulately ridged while *L. kazawaensis* is reticulately ridged on the dorsal surface.

***Lobaria wanglisongiana*** M.X. Yang & Scheid., *sp. nov.* — MycoBank MB 838333; Fig. 13

*Etymology.* 'wanglisongiana' refers to the eminent Chinese lichenologist Wang Li-Song.

*Typus.* CHINA, Xizang Prov., Bomi Co., Gu Vil., on route from Bomi to Linzhi, on bark, 19 July 2019, L.S. Wang, X.Y. Wang, M.X. Yang *et al.* (holotype KUN-XY19-1049).

Primary photobiont *Symbiochloris* cf. *reticulata*. Thallus medium to large size, 10–20 cm, lobes more or less sinuate along margin; dorsal surface of thallus dark green when wet, olive-ochre green in herbaria, reticulation weak, ridges indistinct, pruina present on thallus; isidiate in ridged portions and at margins, sometimes also at foveae, isidia coralloid, aggregated in groups or single, cylindrical along ridges and margins, always blastidiate, tip of isidia brown; ventral surface blackish and densely tomentose in grooves between the swellings, tomentose veined type, with sparse rhizines 1–3 mm long.

Apothecia very rare, mostly on ridges, 0.5–1 cm diam, disc reddish brown; parathecium developed, united with edge of thalloid exciple and surrounding medulla; epithecium 10 µm thick; hypothecium 10 µm thick; hymenium c. 25 µm high; excipulum 25 µm thick. Ascospores fusoid, 3-septate at maturity, 15–25 × 3.5–5 µm. Pycnidia absent.

Chemical substances — Pannaric acid or no chemistry.

Habitat — Scattered to gregarious on bark in forest dominated by *Quercus*, alt. 2680–3140 m.

*Additional materials examined.* CHINA, Xizang Prov., Bomi Co., Zhamu Town, alt. 2849 m, N29°47'06.25" E95°54'19.92", 13 July 2019, L.S. Wang, X.Y. Wang, M.X. Yang *et al.*, KUN-19-64427, KUN-19-64448; Songzong Vil., alt. 3140 m, N29°41'30.33" E96°12'11.42", 23 Sept. 2016, L.S. Wang, X.Y. Wang, M.X. Yang *et al.*, KUN-16-53176, KUN-16-53208, KUN-16-53233.

Notes — *Lobaria wanglisongiana* is phylogenetically closely related to *L. sachalinensis* and *L. kazawaensis*. While the new species has multiple blastidiate isidia often aggregated in groups, *L. sachalinensis* has no isidia and *L. kazawaensis* has cylindrical isidia (Yoshimura 1971).

## KEY TO THE SPECIES OF THE GREEN-ALGAL LOBARIA S.STR. IN THE HIMALAYAS AND THE HENGDUAN MOUNTAINS

1. Thallus isidiate or lobulate . . . . . 2
1. Thallus without isidia and lobules . . . . . 14
2. Norstictic acid present . . . . . 3
2. Norstictic acid absent . . . . . 7
3. Gyrophoric acid absent . . . . . 4
3. Gyrophoric acid present . . . . . 5
4. Retigeric acid absent . . . . . *L. meridionalis*
4. Retigeric acid present . . . . . *L. sachalinensis*
5. Isidia knob-like . . . . . *L. granulosa*
5. Isidia cylindrical . . . . . 6
6. Cylindrical or occasionally small lobed isidia along the ridges; constictic acid present . . . . . *L. pindarensis*
6. Cylindrical isidia along the ridges and margins; constictic acid absent . . . . . *L. isidiophora*

7. Gyrophoric acid present	8
7. Gyrophoric acid absent	11
8. Stictic acid present	9
8. Stictic acid absent	<i>L. spatulata</i>
9. Lobes apex rounded; rarely marginal lobules	<i>L. multipartita</i>
9. Lobes apex truncate	10
10. Isidia knob-like, multiple in groups or scattered single isidia	<i>L. perelegans</i>
10. Isidia coralloid, clustered or single	<i>L. tibetana</i>
11. Isidia present, lobules absent	12
11. Isidia absent, lobules present	<i>L. yulongensis</i>
12. Isidia verrucose aggregated; stictic acid present	<i>L. verruculosa</i>
12. Isidia coralloid or cylindrical; stictic acid absent	13
13. Isidia coralloid; retigeric acid absent and pannaric acid present	<i>L. wanglisongiana</i>
13. Isidia cylindrical; retigeric acid present and pannaric acid absent	<i>L. kazawaensis</i>
14. Norstictic acid present	15
14. Norstictic acid absent	18
15. Gyrophoric acid present	16
15. Gyrophoric acid absent	<i>L. chinensis</i>
16. With longer internodes near apex	<i>L. rhizinata</i>
16. With shorter internodes near apex	17
17. Lobes apex truncate	<i>L. bhutanica</i>
17. Lobes apex rounded, antler-like	<i>L. orientalis</i>
18. Gyrophoric acid present	19
18. Gyrophoric acid absent	22
19. Stictic acid present	20
19. Stictic acid absent	21
20. With longer internodes near apex; constictic acid absent	<i>L. costata</i>
20. With shorter internodes near apex; constictic acid present	<i>L. devkotae</i>
21. Thelephoric acid present	<i>L. gyrophorica</i>
21. Thelephoric acid absent	<i>L. yoshimurae</i>
22. Lobes antler-like, stictic acid present	<i>L. ligulata</i>
22. Lobes tip acute, stictic acid absent	<i>L. yunnanensis</i>

## DISCUSSION

Our analyses revealed an unexpectedly high species richness in the lichen genus *Lobaria* in the Hengduan Mountains and the Himalayas, where the genus is widely distributed in old-growth forests. In our taxonomic study, a total of 21 species were identified based on a multilocus phylogenetic analysis. Surprisingly, only 10 species were previously known, based on morphological, chemical and reproductive characteristics. Eleven species were confirmed as new to science. These results indicate that the identification of *Lobaria* species based on morphology alone is difficult, and molecular information from a multilocus phylogenetic approach is required to unravel the genus' species diversity. It is likely that even more species from this region await description.

Our study confirms that green-algal *Lobaria* are widespread in the tropical to temperate regions in East Asia. In the Nepalese Himalayas, only one isidiate species (*L. pindarensis*) exists, while in the Hengduan Mountains and the eastern Himalayas (Bhutan, Eastern Xizang), isidiate and non-isidiate individuals form species rich photobiont-mediated guilds. This complexity is characteristic of several areas, where isidiate species co-occur with non-isidiate species (Dal Grande et al. 2014). The

second difference among them is the taxon diversity of the isidiate lichens. In the Nepalese Himalayas, there is a relatively high phenotypic diversity of the isidiate thalli, but they are all conspecific (*L. pindarensis*). In the Hengduan Mountains and the eastern Himalayas, however, we found several genetically distinct lineages, such as *L. tibetana* and *L. wanglisongiana* (Fig. 1), that share morphological traits and cannot be easily distinguished in the field. Future studies should clarify the role of different reproductive strategies of guild members (core and fringe species).

Divergence time estimates suggest that several major divergence events led to the evolution of extant taxa within *Lobaria*. The diversification of the green-algal species was estimated to have started in the mid-Miocene (12.5 Myr BP; Fig. 2). The divergence of *L. yunnanensis*, which is known to exist in Northwest Yunnan and the Xizang Himalayas, from other *Lobaria* species is estimated at around 10 Myr ago in the late Miocene. The next divergence of clades 1 to 20 is estimated at around 8 Myr ago. The diversified lineages of clades 1 to 14 speciated several times at around 5.35 Myr later during the end of the Miocene to Pliocene, while 15 to 20 after around 5.96 Myr. The widespread view is that considerable climatic change occurred during the late Miocene, around 8 Myr ago, leading to aridification in western Eurasia, although fossil records of mammal fauna suggest an increase in humidity in northern China of 700–1500 mm/yr at about the same time (Fortelius et al. 2006, Eronen et al. 2012). This coincides in time with evidence of stronger Indian summer monsoon circulation about 8 Myr ago in northern China, marking the start of a more humid phase, and subsequent drier conditions (< 700 mm/yr) from 4 Myr ago onwards (Zhisheng et al. 2001, Fortelius et al. 2006, Eronen et al. 2012). This highlights that the Indian summer monsoons have brought heavy summer rainfall to the southern part of the Himalayas, with decreasing precipitation in other areas of the Qinghai-Tibetan Plateau since the late Miocene. In addition, the Hengduan Mountains uplifted over the last 8 Myr, leading to novel environmental conditions including new habitats and population dispersal barriers, which increased the rate at which resident species evolved and diversified to form new ones. According to Heaney (1991), during the Miocene, tropical rain forests and temperate mountain forests in Southeast Asia extended to southern China and Japan, but since that time these forests have contracted. The impact of these climatic oscillations has been confirmed in various groups of plants (Yang et al. 2012, Zhou et al. 2013, Wen et al. 2014, 2016). In addition, our time-estimates show that the abundant species (*L. bhutanica*, *L. chinensis*, *L. gyrophorica*, *L. orientalis*, *L. perelegans*, *L. pindarensis*, *L. rhizinata*, *L. sachalinensis*, *L. tibetana* and *L. wanglisongiana*) appeared during the Pleistocene, from 0.68 Myr to 2.8 Myr ago, which supports the idea that dispersal between the Himalayas and the Hengduan Mountains significantly increased during the last 2 Myr. Furthermore, Fig. 1 shows strong evidence for the existence of species-pairs: *L. gyrophorica* (sexual) vs *L. perelegans* (asexual), newly reported in this study, and *L. chinensis* vs *L. isidiophora*, which has been reported previously (Cornejo & Scheidegger 2018). The divergence of *L. gyrophorica* and *L. perelegans* was estimated to have occurred during the Pleistocene (2.06 Myr ago) and support the idea of young lineages in a geologic timescale (Fig. 2).

Low-altitude regions and mountain gorges of the Hengduan Mountains and the Himalayas are considered to have been refugia during the glacial periods (Meng et al. 2015, Wang & Hua 2018). Species in this region responded to environmental changes by migrating north and south along the Hengduan Mountains, corresponding to a change in altitude (Hewitt 2004, Wang & Hua 2018, Hu et al. 2019). After migration and colonisa-

tion, populations were isolated for a long time in glacial refugia formed by Pleistocene glaciers, which promoted population differentiation and speciation (Meng et al. 2015, Ye et al. 2016). In addition, accurate species delimitation has critical implications for ecological and conservation studies.

Our study revealed an impressive diversity of green-algal *Lobaria* species in the study region. All species except *Lobaria pindarensis* have a narrow distribution area restricted to the eastern Himalayas (Xizang, Bhutan) and the Hengduan Mountains. Developing an effective conservation strategy for the geographically restricted endemic species of the forest landscapes in the study region is therefore a high priority. Based on our field investigations, it is clear that infrastructure construction and forest management activities considerably reduce and threaten *Lobaria* habitats in regions that have recently been under intensive development, especially in the forest landscape of Bomi (Linshi) where the reported species currently represent the highest diversity of green-algal *Lobaria* worldwide. Effective conservation strategies for the Himalayan and Hengduan Mountain forest landscapes must therefore ensure that these unique cradles of biodiversity do not turn into graves for biodiversity (Rangel et al. 2018), including the lichen genus *Lobaria*.

**Acknowledgements** We sincerely thank Xinyu Wang at the Lichen Fungarium of the Kunming Institute of Botany, CAS for providing sampling support, Christine Keller for providing chemical diagnostic features, Melissa Dawes for careful linguistic revision of the manuscript, and Markus Schlegel for guidance in the use of the PartitionFinder software. This work was supported by the Swiss National Science Foundation (grant JRP IZ70Z0\_131338/1 to CS), the National Natural Science Foundation of China (No. 31970022, 31670028), the Second Tibetan Plateau Scientific Expedition and Research Program (No. 2019QZK0503), and the China Scholarship Council.

**Declaration on conflict of interest** The authors declare that there is no conflict of interest.

## REFERENCES

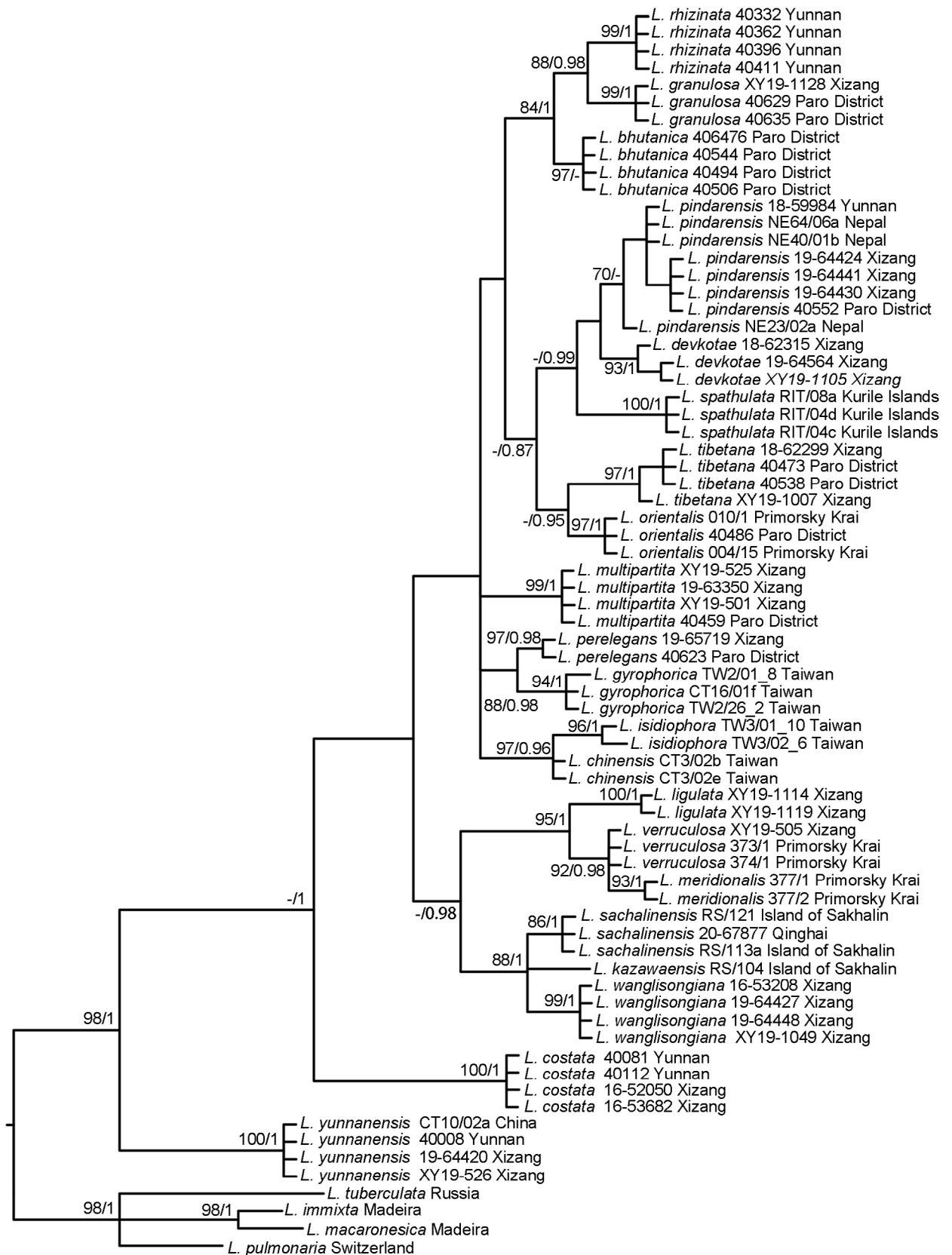
- Ahmadjian V. 1993. The lichen symbiosis. John Wiley, New York.
- Aptroot A, Feijen FJ. 2002. Annotated checklist of the lichens and lichenicolous fungi of Bhutan. *Fungal Diversity* 11: 21–48.
- Bouckaert RR. 2010. DensiTree: making sense of sets of phylogenetic trees. *Bioinformatics* 26: 1372–1373.
- Chen JB. 1995. A new species of *Lobaria* hoffm. *Acta Mycologica Sinica* 14: 261–262.
- Cornejo C, Chabanenko S, Scheidegger C. 2009. Phylogenetic analysis indicates transitions from vegetative to sexual reproduction in the *Lobaria retigera* group (Ascomycota). *The Lichenologist* 41: 275–284.
- Cornejo C, Chabanenko S, Scheidegger C. 2018. Are species-pairs diverging lineages? A nine-locus analysis uncovers speciation among species-pair of *Lobaria meridionalis*-group (Ascomycota). *Molecular Phylogenetics Evolution* 129: 48–59.
- Cornejo C, Scheidegger C. 2010. *Lobaria macaronesica* sp. nov., and the phylogeny of *Lobaria* sect. *Lobaria* (Lobariaceae) in Macaronesia. *The Bryologist* 113: 590–604.
- Cornejo C, Scheidegger C. 2015. Multi-gene phylogeny of the genus *Lobaria*: Evidence of species-pair and allopatric cryptic speciation in East Asia. *American Journal of Botany* 102: 1–16.
- Cornejo C, Scheidegger C. 2018. Estimating the timescale of *Lobaria* diversification. *The Lichenologist* 50: 113–121.
- Dal Grande F, Beck A, Cornejo C, et al. 2014. Molecular phylogeny and symbiotic selectivity of the green algal genus *Dictyochloropsis* s.l. (Trebouxiophyceae): a polyphyletic and widespread group forming photobiont-mediated guilds in the lichen family Lobariaceae. *New Phytologist* 202: 455–470.
- Deng T, Wang X, Fortelius M, et al. 2011. Out of Tibet: Pliocene woolly rhino suggests high-plateau origin of ice age megaherbivores. *Science* 333: 1285–1288.
- Dettman JR, Jacobson DJ, Taylor JW. 2003. A multilocus genealogical approach to phylogenetic species recognition in the model eukaryote *Neurospora*. *Evolution* 57(12): 2703–2720.
- Devkota S, Keller C, Werth S, et al. 2017. Distribution and national conservation status of the lichen family Lobariaceae (Peltigerales): from subtropical luxuriant forests to the alpine scrub of Nepal Himalaya. *Mycosphere* 8: 630–648.
- Drummond AJ, Suchard MA. 2010. Bayesian random local clocks, or one rate to rule them all. *BMC Biology* 8: 114.
- Drummond AJ, Suchard MA, Xie D, et al. 2012. Bayesian phylogenetics with BEAUti and the BEAST 1.7. *Molecular Biology Evolution* 29: 1969–1973.
- Eronen JT, Fortelius M, Micheels A, et al. 2012. Neogene aridification of the northern hemisphere. *Geology* 40: 823–826.
- Fortelius M, Eronen J, Liu L, et al. 2006. Late Miocene and Pliocene large land mammals and climatic changes in Eurasia. *Palaeogeography Palaeoclimatology Palaeoecology* 238: 219–227.
- Gardes M, Bruns TD. 1993. ITS primers with enhanced specificity for basidiomycetes application to the identification of mycorrhizae and rusts. *Molecular Ecology* 2: 113–118.
- Heaney LR. 1991. A synopsis of climatic and vegetational change in Southeast Asia. In: Myers N (eds), *Tropical forests and climate*. Springer, Dordrecht.
- Hewitt GM. 2004. Genetic consequences of climatic oscillations in the Quaternary. *Philosophical Transactions of Royal Society B: Biological Sciences* 359: 183–195.
- Hilmo O, Lundemo S, Holien H, et al. 2012. Genetic structure in a fragmented Northern Hemisphere rainforest: large effective sizes and high connectivity among populations of the epiphytic lichen *Lobaria pulmonaria*. *Molecular Ecology* 21: 3250–3265.
- Honegger R. 2012. Lichen-forming fungi and their photobionts. *The Mycota* 5: 287–340.
- Hu GL, Wang JS, Hua BZ. 2019. Five new species of Dicerapanorpa Zhong & Hau (Mecoptera, Panorpidae) from Yunnan, China. *Journal of Asia-Pacific Entomology* 22: 159–166.
- Johansson E, Steffens JJ, Emptage M, et al. 2000. Cloning, expression, purification and crystallization of saccharopine reductase from *Magnaporthe grisea*. *Acta Crystallographica Section D-Biological Crystallography* 56: 662–664.
- Jordan W. 1973. The genus *Lobaria* in North America north of Mexico. *The Bryologist* 76: 225–251.
- Kurokawa S. 1978. Noteworthy lichens collected in the Bonin Islands. *Bulletin of the National Museum of Nature and Science, Tokyo* 11: 27–30.
- Lai MZ. 2000. *Illustrated macrolichens of Taiwan (I)*. The Council of Agriculture, Taipei.
- Lanfear R, Frandsen PB, Wright AM, et al. 2016. PartitionFinder 2: new methods for selecting partitioned models of evolution for molecular and morphological phylogenetic analyses. *Molecular Biology and Evolution* 34: 772–773.
- Li H. 2018. Minimap2: pairwise alignment for nucleotide sequences. *Bioinformatics* 34: 3094–3100.
- Liu D, Goffinet B, Ertz D, et al. 2017. Circumscription and phylogeny of the Lepidostromatales (lichenized Basidiomycota) following discovery of new species from China and Africa. *Mycologia* 109: 730–748.
- Lücking R, Hodkinson BP, Leavitt SD. 2017. The 2016 classification of lichenized fungi in the Ascomycota and Basidiomycota – Approaching one thousand genera. *The Bryologist* 119: 361–416.
- Lücking R, Rivas Plata E, Chaves L, et al. 2009. How many tropical lichens are there...really? In: Thell A, Seaward MRD, Feuerer T (eds), *Bibliotheca Lichenologica*: 399–418. Cramer in der Gebrüder Borntraeger Verlagsgesellschaft, Berlin-Stuttgart.
- Martin P, Jochen M, Ye-Hua S, et al. 2015. Evolutionary history of passerine birds (Aves: Passeriformes) from the Qinghai-Tibetan plateau: from a pre-Quaternary perspective to an integrative biodiversity assessment. *Journal of Ornithology* 156: 355–365.
- Meng L, Chen G, Li Z, et al. 2015. Refugial isolation and range expansions drive the genetic structure of *Oxyria sinensis* (Polygonaceae) in the Himalaya-Hengduan Mountains. *Scientific Reports* 5: 10396.
- Miadlikowska J, Kauff F, Högnabba F, et al. 2014. A multigene phylogenetic synthesis for the class Lecanoromycetes (Ascomycota): 1307 fungi representing 1139 infrageneric taxa, 317 genera and 66 families. *Molecular Phylogenetics and Evolution* 79: 132–168.
- Miadlikowska J, Lutzoni F. 2004. Phylogenetic classification of Peltigeralean fungi (Peltigerales, Ascomycota) based on ribosomal RNA small and large subunits. *American Journal of Botany* 91: 449–464.
- Moncada B, Lücking R, Betancourt-Macuase L. 2013. Phylogeny of the Lobariaceae (lichenized Ascomycota: Peltigerales), with a reappraisal of the genus *Lobariella*. *The Lichenologist* 45: 203–263.
- Nadyeina O, Dymytrova L, Naumovych A, et al. 2014. Distribution and dispersal ecology of *Lobaria pulmonaria* in the largest primeval beech forest of Europe. *Biodiversity and Conservation* 23: 3241–3262.



- Nuhn ME, Binder M, Taylor AFS, et al. 2013. Phylogenetic overview of the Boletineae. *Fungal Biology* 117: 479–511.
- Rambaut A. 2012. FigTree v1. 4.0. University of Oxford, Oxford, UK.
- Rambaut A, Suchard MA, Xie D, et al. 2014. Tracer v1.6. <http://beast.bio.ed.ac.uk/Tracer>.
- Rangel TF, Edwards NR, Holden PB, et al. 2018. Modeling the ecology and evolution of biodiversity: Biogeographical cradles, museums, and graves. *Science* 361: eaar5452.
- Räsänen V. 1952. Lichenes novi, VII. *Annales Botanici Societatis Zoologicae-Botanicae Fennicae* 6: 80–86.
- Robert AS, Alexander F, Tao S. 2020. Cenozoic topography, monsoons and biodiversity conservation within the Tibetan Region: An evolving story. *Plant Diversity* 42: 229–254.
- Ronquist F, Huelsenbeck JP. 2003. MrBayes 3: Bayesian phylogenetic inference under mixed models. *Bioinformatics* 19: 1572–1574.
- Schiefelbein U, Thell A. 2018. Current state of *Lobaria pulmonaria* in southernmost Sweden. *Graphis Scripta* 30: 94–104.
- Schmidt J, Opgenoorth L, Holl S, et al. 2012. Into the Himalayan exile: the phylogeography of the ground beetle *Erithra* clade supports the Tibetan origin of forest-dwelling Himalayan species groups. *PLoS ONE* 7(9): e45482.
- Simon A, Lücking R, Moncada B, et al. 2020. *Emmanuelia*, a new genus of lobarioid lichen-forming fungi (Ascomycota: Peltigerales): phylogeny and synopsis of accepted species. *Plant and Fungal Systematics* 65: 76–94.
- Škaloud P, Friedl T, Hallmann C, et al. 2016. Taxonomic revision and species delimitation of coccooid green algae currently assigned to the genus *Dictyochloropsis* (Trebouxiophyceae, Chlorophyta). *Journal of Phycology* 52: 599–617.
- Stamatakis A. 2006. RAxML-VI-HPC: maximum likelihood-based phylogenetic analyses with thousands of taxa and mixed models. *Bioinformatics* 22: 2688–2690.
- Tamura K, Stecher G, Peterson D, et al. 2013. MEGA6: Molecular Evolutionary Genetics Analysis version 6.0. *Molecular Biology Evolution* 30: 2725–2729.
- Taylor JW, Jacobson DJ, Kroken S, et al. 2000. Phylogenetic species recognition and species concepts in Fungi. *Fungal Genetics and Biology* 31: 21–32.
- Tseng ZJ, Wang X, Slater GJ, et al. 2013. Himalayan fossils of the oldest known pantherine establish ancient origin of big cats. *Proceedings of the Royal Society of London. Series B* 281: 20132686.
- Wang LS, Wang XY, Liu D, et al. 2017. Four new species of *Bryoria* (Lichenized Ascomycota: Parmeliaceae) from the Hengduan Mountains, China. *Phylotaxa* 297: 29–41.
- Wang M, Hua BZ. 2018. High species diversity of the genus *Neopanorpa* (Mecoptera: Panorpidae) in Yunnan Province. *China Zootaxa* 4483: 36–66.
- Wang X, Tseng ZJ, Li Q, et al. 2014. From 'third pole' to north pole: a Himalayan origin for the arctic fox. *Proceedings of the Royal Society of London. Series B* 281: 20140893.
- Wedin M, Wiklund E. 2004. The phylogenetic relationships of Lecanorales suborder Peltigerineae revisited. *Acta Universitatis Upsaliensis. Symbolae Botanicae Upsalienses* 34: 469–475.
- Wedin M, Wiklund E, Jorgensen PM, et al. 2009. Slippery when wet: Phylogeny and character evolution in the gelatinous cyanobacterial lichens (Peltigerales, Ascomycetes). *Molecular Phylogenetics and Evolution* 53: 862–871.
- Wen J, Nie ZL, Ickert-Bond SM. 2016. Intercontinental disjunctions between eastern Asia and western North America in vascular plants highlight the biogeographic importance of the Bering land bridge from late Cretaceous to Neogene. *International Journal of Systematic and Evolutionary Microbiology* 54: 469–490.
- Wen J, Zhang J, Nie ZL, et al. 2014. Evolutionary diversifications of plants on the Qinghai-Tibetan Plateau. *Frontiers in Genetics* 5: 4.
- White TJ, Bruns T, Lee S, et al. 1990. Amplification and direct sequencing of fungal ribosomal RNA genes for phylogenetics. In: Innis MA, Gelfand DH, Sninsky JJ, et al. (eds), *PCR Protocols: A guide to methods and applications*: 315–322. Academic Press, Inc., New York.
- Widhelm TJ, Grewe F, Huang JP, et al. 2019. Multiple historical processes obscure phylogenetic relationships in a taxonomically difficult group (Lobariaceae, Ascomycota). *Scientific Reports* 9: 8968.
- Xing YW, Ree RH. 2017. Uplift-driven diversification in the Hengduan Mountains, a temperate biodiversity hotspot. *Proceedings of the National Academy of Sciences of the United States of America* 114: E3444–E3451.
- Yang FS, Qin AL, Li YF, et al. 2012. Great genetic differentiation among populations of *Meconopsis integrifolia* and its implication for plant speciation in the Qinghai-Tibetan Plateau. *PLoS One* 7: e37192.
- Yang MX, Wang XY, Liu D, et al. 2019. New species and records of *Pyxine* (Caliciaceae) in China. *Myckeys* 45: 93–109.
- Ye Z, Chen PP, Bu WJ. 2016. Terrestrial mountain islands and Pleistocene climate fluctuations as motors for speciation: a case study on the genus *Pseudovelia* (Hemiptera: Veliidae). *Scientific Reports* 6: 33625.
- Yoshimura I. 1969. Lichenological notes 2–6. *The Journal of the Hattori Botanical Laboratory* 32: 67–78.
- Yoshimura I. 1971. The genus *Lobaria* of eastern Asia. *The Journal of the Hattori Botanical Laboratory* 34: 231–364.
- Yoshimura I. 1998a. *Lobaria* in Latin America: Taxonomic, geographic and evolutionary aspects. In: Marcelli MP, Sweaward MRD (eds), *Lichenology in Latin America: History, current knowledge and applications*: 129–134. CETESB, Sao Paulo.
- Yoshimura I. 1998b. Vainio and *Lobaria*, old and modern concepts. In: Marcelli MP, Ahti T (eds), *Recollecting Edvard August Vainio*: 85–94. CETESB, Sao Paulo.
- Yu H, Miao S, Xie G, et al. 2020. Contrasting floristic diversity of the Hengduan Mountains, the Himalayas and the Qinghai-Tibet Plateau sensu stricto in China. *Frontiers in Ecology and the Evolution* 8: 136.
- Zhisheng A, Kutzbach JE, Prell WL, et al. 2001. Evolution of Asian monsoons and phased uplift of the Himalaya-Tibetan plateau since Late Miocene times. *Nature* 411: 62–66.
- Zhou Z, Hong D, Niu Y, et al. 2013. Phylogenetic and biogeographic analyses of the Sino-Himalayan endemic genus *Cyananthus* (Campanulaceae) and implications for the evolution of its sexual system. *Molecular Phylogenetics and Evolution* 68: 482–497.

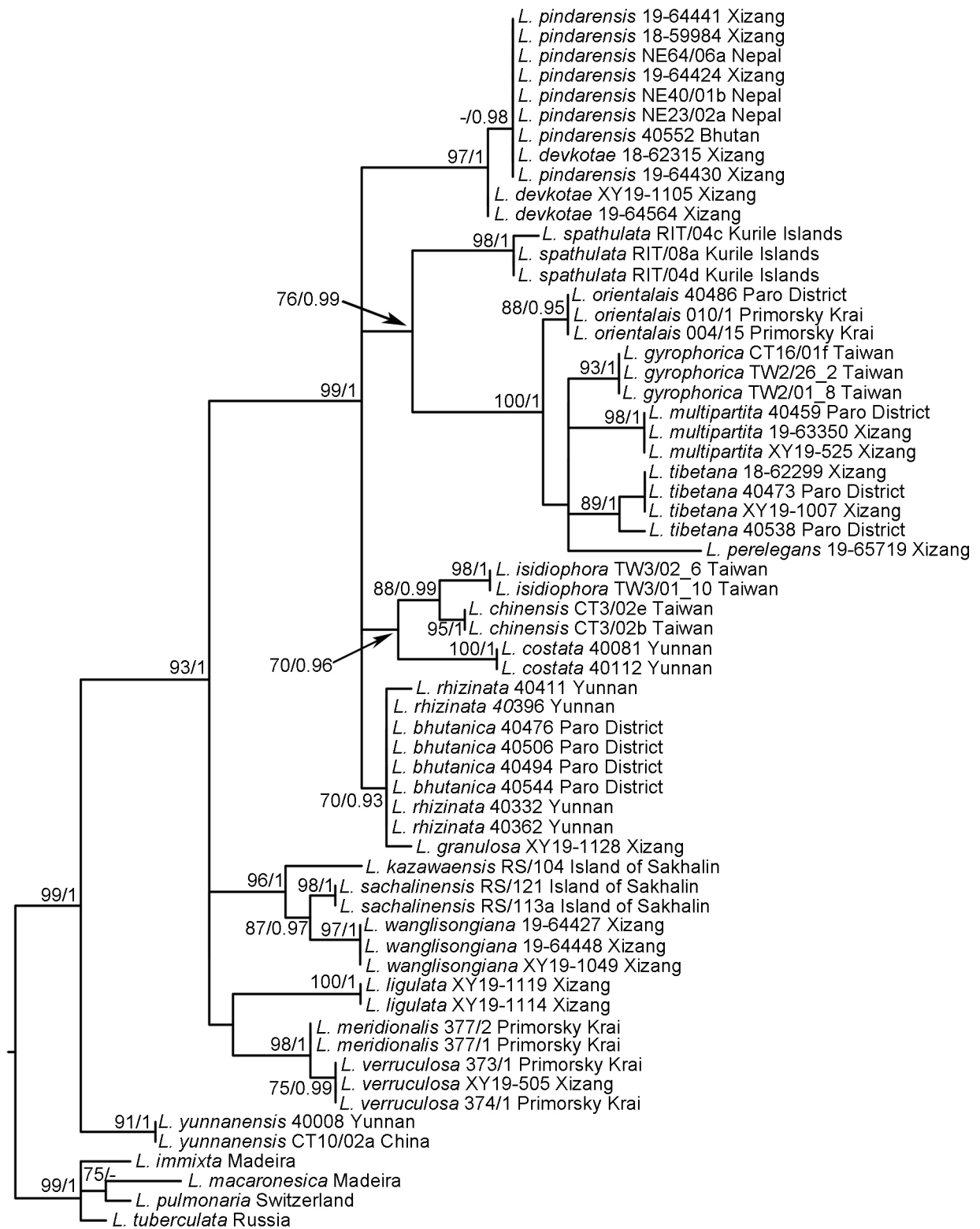
**Appendix 1** The best partition schemes and nucleotide substitution models selected by PartitionFinder for both single gene and 3-gene dataset applied in phylogenetic analyses.

Dataset	MryBayes		RAxML	
	Partition scheme	Model	Partition scheme	Model
ITS	ITS1, ITS2 5.8S	TRN+G K80+I	ITS1, ITS2 5.8S	GTR+G GTR+I+G
<i>EF1α</i>	<i>EF1α</i> _introns <i>EF1α</i> -1_codon 1, <i>EF1α</i> -1_codon 2 <i>EF1α</i> -1_codon 3	K80+G F81 K80	<i>EF1α</i> _introns, <i>EF1α</i> -1_codon 3 <i>EF1α</i> -1_codon 1, <i>EF1α</i> -1_codon 2	GTR+G GTR+G
<i>RPB2</i>	<i>RPB2</i> _codon 3 <i>RPB2</i> _codon 1 <i>RPB2</i> _codon 2	K80+G TRN+I F81	<i>RPB2</i> _codon 3 <i>RPB2</i> _codon 1 <i>RPB2</i> _codon 2	GTR+G GTR+I+G GTR+G
3-gene	ITS1, ITS2 5.8S <i>EF1α</i> -1_codon 1, <i>RPB2</i> _codon 1 <i>EF1α</i> _introns <i>RPB2</i> _codon 2, <i>EF1α</i> -1_codon 2 <i>EF1α</i> -1_codon 3 <i>RPB2</i> _codon 3	HKY+I K80+I TRN+I K80+G F81 K80 K80+G	ITS1, ITS2 <i>RPB2</i> _codon 1, 5.8S, <i>EF1α</i> -1_codon 1 <i>EF1α</i> -1_codon 3, <i>EF1α</i> _introns <i>EF1α</i> -2_codon 2, <i>RPB2</i> _codon 2 <i>RPB2</i> _codon 3	GTR+G GTR+I+G GTR+G GTR+G

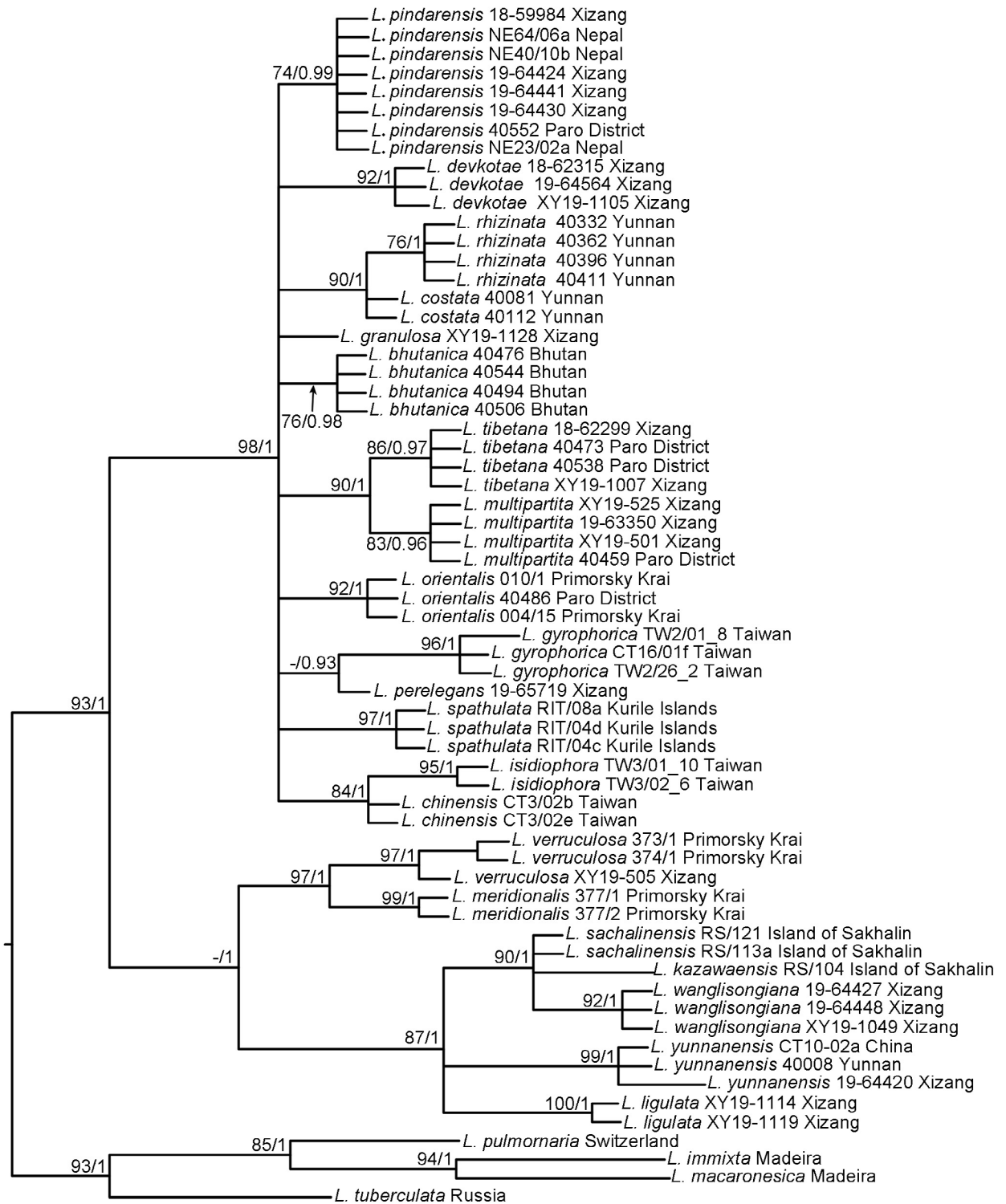


**Appendix 2** Phylogenetic tree of green-algal *Lobaria* inferred from BI analysis with branch support obtained by ML and BI analyses based on ITS sequences. Branch support values are indicated by numbers above branches (MLB/BPP). - represent MLB < 70 % or BPP < 0.95.





**Appendix 3** Phylogenetic tree of green-algal *Lobaria* inferred from BI analysis with branch support obtained by ML and BI analyses based on *EF-1 $\alpha$*  sequences. Branch support values are indicated by numbers above branches (MLB/BPP). - represent MLB < 70 % or BPP < 0.95.



**Appendix 4** Phylogenetic tree of green-algal *Lobaria* inferred from BI analysis with branch support obtained by ML and BI analyses based on *RPB2* sequences. Branch support values are indicated by numbers above branches (MLB/BPP). - represent MLB < 70 % or BPP < 0.95.