



Psychrophilic fungi from the world's roof

M. Wang^{1,2}, X. Jiang³, W. Wu³, Y. Hao¹, Y. Su¹, L. Cai¹, M. Xiang¹, X. Liu¹

Key words

glaciers
Phoma sclerotioides
Pseudogymnoascus pannorum
Psychrophila
psychrotolerant
Tetracladium

Abstract During a survey of cold-adapted fungi in alpine glaciers on the Qinghai-Tibet Plateau, 1 428 fungal isolates were obtained of which 150 species were preliminary identified. *Phoma sclerotioides* and *Pseudogymnoascus pannorum* were the most dominant species. Psychrotolerant species in *Helotiales* (*Leotiomyces*, *Ascomycota*) were studied in more detail as they represented the most commonly encountered group during this investigation. Two phylogenetic trees were constructed based on the partial large subunit nrDNA (LSU) to infer the taxonomic placements of these strains. Our strains nested in two well-supported major clades, which represented *Tetracladium* and a previously unknown lineage. The unknown lineage is distant to any other currently known genera in *Helotiales*. *Psychrophila* gen. nov. was therefore established to accommodate these strains which are characterised by globose or subglobose conidia formed from phialides on short or reduced conidiophores. Our analysis also showed that an LSU-based phylogeny is insufficient in differentiating strains at species level. Additional analyses using combined sequences of ITS+TEF1+TUB regions were employed to further investigate the phylogenetic relationships of these strains. Together with the recognisable morphological distinctions, six new species (i.e. *P. antarctica*, *P. lutea*, *P. olivacea*, *T. ellipsoideum*, *T. globosum* and *T. psychrophilum*) were described. Our preliminary investigation indicates a high diversity of cold-adapted species in nature, and many of them may represent unknown species.

Article info Received: 26 August 2013; Accepted: 5 March 2014; Published: 15 December 2014.

INTRODUCTION

Cold-adapted fungi are ubiquitous in cold habitats such as the deep seas, Arctic and Antarctic areas, and glaciers. Cold-adapted fungi have evolved special properties, e.g., cold adapted enzymes, change of membrane fluidity, and other cellular components, to enable them to grow at low temperatures at rates comparable to those of mesophiles at moderate temperatures (D'Amico et al. 2006, Ruisi et al. 2007). During the past two decades, research on cold-adapted fungi has increased, driven by their potential value for application in biotechnology (Margesin & Schinner 1994, 1999). Cold-adapted fungi have become important sources for the discovery of novel bioactive secondary metabolites and enzymes (Flam 1994, Pietra 1997, Biabini & Laatch 1998, Gudjarnson 1999, Höller et al. 2000, Verbist et al. 2000, Bhadury et al. 2006, Ebel 2006, Blunt et al. 2007, Rateb & Ebel 2011).

Microorganisms living in low temperature environments are generally referred to as psychrophiles or psychrotolerants. Psychrophiles have been defined as species that can grow at or below 0 °C; have optimum growth temperatures (OGT) of ≤ 15 °C and maximum growth temperatures (MGT) of ≤ 20 °C; while psychrotolerants can grow close to 0 °C, have OGT > 15 °C and MGT > 20 °C (Morita 1975). However, these definitions are also ambiguous and may not be applicable for most of the eukaryotes, as some higher organisms known as psychrophiles, such as some algae, plants, insects, marine and terrestrial invertebrates, and fish may have much broader growth-temperature ranges. The terms stenopsychrophile and eurypsychrophile have therefore been proposed to modify the definitions of psychrophilic and psychrotolerant. The 'steno-

and 'eury-' are referred ecological terms derived from Shelford's law of tolerance that describe narrow or wide tolerance to an environmental determinant, respectively. The stenopsychrophile (equal to 'psychrophile') refers to microorganisms with a restricted growth-temperature range that cannot tolerate higher temperatures. Eurypsychrophile (equal to 'psychrotolerant microorganisms') describes microorganisms that 'like' permanently cold environments, but can also tolerate a wide range of temperatures extending into the mesophilic range (Cavicchioli 2006).

Since the discovery of bioluminescent bacteria that are able to grow at 0 °C by Forster (1887), a number of psychrophilic bacteria have been discovered from deep ocean sediments, glacier ice, and soils of the polar regions (DeLong et al. 1997, Mountfort et al. 1998, Price 2000, Berestovskaya et al. 2002, Margesin et al. 2003, Bowman et al. 2004, Seo et al. 2005, Zhang et al. 2006, 2008, Grünke et al. 2012). However, the number of known cold-adapted fungi, especially psychrophilic fungi, is relatively low. In recent years, the diversity of filamentous fungi in cold niches has been increasingly investigated, and the number of known species has greatly expanded (Möller & Dreyfuss 1996, Robinson 2001, Blanchette et al. 2004, Arenz et al. 2006, Connell et al. 2006, Held et al. 2006, Malosso et al. 2006, Duncan et al. 2008, Onofri et al. 2008, Selbmann et al. 2008, Arenz & Blanchette 2009, Jurgens et al. 2009). Most species in these studies, however, are psychrotolerant, and only a few were documented as psychrophiles such as *Thelebolus microsporus*, *Mucor strictus*, *Phoma herbarum*, *Humicola marvinii*, *Pseudogymnoascus destructans*, and some snow molds (e.g. *Sclerotinia borealis*, *Microdochium nivale*, *Coprinus psychromorbidus*) (Schipper 1967, Dejardin & Ward 1971, Traquair & Smith 1982, Richard et al. 1997, Hsiang et al. 1999, Tronsmo et al. 2001, Singh et al. 2006, Gargas et al. 2009, Hoshino et al. 2010, Anupama et al. 2011, Minnis & Lindner 2013). Species in several yeast genera including *Mra-ki-ki*, *Mrakiella* and *Rhodotorula* were usually described as psy-

¹ State Key Laboratory of Mycology, Institute of Microbiology, Chinese Academy of Sciences, No. 3 1st Beichen West Road, Chaoyang District, Beijing 100101, China; corresponding author e-mail: liuxz@im.ac.cn.

² University of Chinese Academy of Sciences, Beijing 100049, China.

³ Novozymes (China) Investment Co. Ltd., China Headquarters, 14 Xinxin Road, Shangdi Zone, Haidian District, 100085 Beijing, China.

chrophilic. For example, *Mrakia frigida* grew well at 15 °C and 4 °C but poorly at 20 °C (Margaret 1966); *Mrakia psychrophila* from Antarctic soil had an optimal growth temperature of 10 °C and a MGT of 18 °C (Xin & Zhou 2007); *Mrakiella cryoconiti*, *M. aquatica* and *M. niccombsii* from alpine and arctic habitats also exhibited psychrophilic features and failed to grow at temperatures over 20 °C (Margesin & Fell 2008, Robin et al. 2010). Psychrophilic fungi are phylogenetically diverse and we identified the cold-adapted fungi through a polyphasic approach integrating phylogenetic analysis, morphological characterisation and cold-adapted features in the present study.

The Qinghai-Tibet Plateau, often called the 'world's roof' or 'the third pole', is located in the southwest of China and is the highest and largest low-latitude region with permafrost in the world. The high elevation and low latitude make the Qinghai-Tibet Plateau a unique alpine ecosystem that is sensitive to changes in climate and surface conditions (Cheng 1998). In the last 30 years, the permafrost area on the Qinghai-Tibet Plateau has decreased by over 10 000 km² (Li & Cheng 1999). Therefore, researchers have been paying more attention to investigate microorganisms on the Qinghai-Tibet Plateau. Although prokaryotes have been extensively investigated in this area (Xiang et al. 2005, 2009, Liu et al. 2006, 2007, 2009a, b, Yao et al. 2006, Zhang et al. 2007, 2009, Yang et al. 2008), fungi have not received much attention. During an investigation of the cold-adapted fungi of the Qinghai-Tibet Plateau, 1 428 fungal isolates were obtained, of which 150 species were preliminarily identified. In this paper, we studied some dominant fungi from Qinghai-Tibet Plateau in *Helotiales* in detail. A few related isolates from the Antarctic were also included.

MATERIALS AND METHODS

Sample collection

Soil samples were collected from seven glaciers in 2009–2011. The sampling areas were located at the edge or centre of the following glaciers: Midui and Zhadang Glacier in Tibet, Qiyi and Toumingmengke Glacier in Gansu Province, Hailuogou Glacier in Sichuan Province, Yuzhufeng Glacier in Qinghai Province and Mingyong Glacier in Yunnan Province. In addition, some soil samples were also collected from Antarctic, near the Great Wall Station in January 2011 (Table 1). For all sampling, clean hand tools were surface sterilised with 70 % ethanol before use. After the removal of the top 5–10 cm of surface sediment, c. 500 g soil sample was collected from the underlying layer and placed in a fresh Zip-lock plastic bag. The samples were maintained at 4 °C until arrival at the laboratory.

Isolation of fungi

Fungi were isolated from soil samples as soon as they were taken to the lab using a traditional pour plate method. A 10 g quantity of each soil sample was suspended in sterile-distilled water in a flask. The volume was then increased to 100 mL before the suspension was shaken to disperse soil particles and then serially diluted to 10⁻², 10⁻³ and 10⁻⁴. For selec-

tion of psychrophilic or psychrotolerant fungi, about 0.1 mL of each dilution was placed on the surface of three 90 mm diam Petri plates containing 1/4 PDA (potato dextrose agar plus chloramphenicol at 0.1 mg/mL and streptomycin at 0.1 mg/mL to suppress bacterial growth) and spread evenly. The plates were sealed and incubated at 4, 10 and 20 °C (one plate per temperature). The plates were examined for fungal growth at 1 wk intervals for 4 wk. Colonies that appeared on the plates were transferred to three new plates, which were incubated at 4, 10 and 20 °C as temperature test. The change in colony diameter after 4 wk (growth rate) was determined for each isolate at the three temperatures. The psychrophilic and psychrotolerant fungi isolated in this study were consolidated but not strictly defined by the definition given by Morita (1975). The fungi grew better at 4 and 10 °C than at 20 °C and those that grew better at 20 °C were considered psychrophilic and psychrotolerant. The ex-type specimens (dried culture) were deposited in HMAS (Herbarium Mycologicum Academiae Sinicae), with the living culture in CGMCC (China General Microbiological Culture Collection Center).

Morphological observations

A number of psychrophilic or psychrotolerant fungi were isolated. Among them, *Phoma sclerotioides* and *Pseudogymnoascus pannorum* (= *Geomyces pannorum*) were most frequently encountered (137 and 52 isolates, respectively) and are well-known cold-adapted species. Sixteen isolates representing some frequently encountered fungi (190 isolates in total) in the *Helotiales* were studied in more detail. Morphological characteristics were observed, photographed, and measured using material from agar plate and slide culture (Coetzee & Eicker 1990). The colony diameter of fungi growing on PDA plates was measured in two perpendicular directions after 4 wk at different temperatures, and the mean diameter was obtained from five replicate plates cultivated at the same temperatures. Morphological characteristics of colonies including aerial mycelium, density, and pigment production were noted. Microscopic morphology was examined using slide cultures: each isolate was transferred to a 50 mL centrifugal tube and incubated at 10 °C for 3 wk before hyphae, conidiophores, and conidia on water mounts were observed, photographed, and measured with a Nikon 80i microscope with differential interference contrast (DIC) optics.

DNA extraction, PCR amplification, sequencing, phylogenetic analysis and SNP detection

Genomic DNA was extracted from the fungal mycelia on PDA plates following the protocol described by Wang & Zhuang (2004). The primers LROR and LR5 (Vilgalys & Hester 1990) were used to amplify the partial large subunit nrDNA (LSU); ITS1 and ITS4 (White et al. 1990) were used to amplify the internal transcribed spacer region of the nuclear ribosomal RNA gene; EF1-728F and EF1-986R (Carbone & Kohn 1999) were used to amplify partial translation elongation factor 1- α gene (TEF1), and Bt-2a and Bt-2b (Glass & Donaldson 1995) were used to amplify partial β -tubulin gene (TUB). PCR was

Table 1 Details of the soil samples collected at 5–10 cm depth for the survey of cold-adapted fungi on the Qinghai-Tibet Plateau and Antarctic.

Sampling location	Collection date	GPS location	Altitude (m)	Depth of collection (cm)
Midui	16 October 2009	N29°27' E96°30'	3874	5–10
Zhadang	27 September 2010	N30°28' E90°38'	5800	5–10
Yuzhufeng	1 October 2009	N35°41' E94°17'	4658	5–10
Toumingmengke	3 October 2010	N39°29' E96°32'	4545	5–10
Qiyi	7 October 2010	N39°15' E97°45'	4315	5–10
Hailuogou	20 April 2011	N29°33' E101°58'	3461	5–10
Mingyong	4 May 2011	N28°27' E98°45'	2811	5–10
Antarctic	5 January 2011	S62°12' W58°57'	10	5–10

Table 2 Fungi and their GenBank accession numbers used in this study. The newly generated sequences in this study are shown in **bold**.

Species	Strain number	GenBank no. ¹			
		LSU	ITS	TEF1	TUB
<i>Arachnopeziza variegilosa</i>	M337	–	EU940163	–	FJ477045
<i>Ascocoryne sarcoides</i>	OSC #100772	FJ176886	–	–	–
	–	AJ406399	–	–	–
<i>Botryotinia fuckeliana</i>	LGM002	–	KC683713	–	KC6837123
<i>Bulgaria inquinans</i>	ZW-Geo52-Clark	AY789344	–	–	–
	CBS 118.31	DQ470960	–	–	–
<i>Cadophora fastigiata</i>	DAOM 225754	JN938877	–	–	–
<i>Cadophora luteo-olivacea</i>	Clo-40	–	HQ661093	HQ661078	HQ661063
	ICMP:18096	HM116760	–	–	–
<i>Catenulifera luxurians</i>	CBS 647.75	–	GU727560	–	GU727569
<i>Ciborinia camelliae</i>	EFA 1	–	FJ959095	–	GQ181121
<i>Cistella spicicola</i>	CBS 731.97	–	GU727553	–	GU727565
<i>Cudoniella clavus</i>	OSC 100054	DQ470944	–	–	–
	ILLS60488	JN012006	–	–	–
<i>Cudoniella indica</i>	VG 113-4	GQ477325	–	–	–
	VG 112-1	GQ477324	–	–	–
<i>Cudoniella tenuispora</i>	ILLS60490	JN012008	–	–	–
<i>Dermea acerina</i>	CBS 161.38	DQ247801	–	–	–
<i>Fabrella tsugae</i>	–	AF356694	–	–	–
<i>Hyaloscypha aureliella</i>	M235	EU940153	–	–	–
	M234	EU940152	–	–	–
<i>Hyaloscypha daedaleae</i>	ZW-Geo138-Clark	AY789415	–	–	–
<i>Hyaloscypha fuckelii</i>	M233	EU940154	–	–	–
<i>Hyaloscypha hepaticola</i>	M339	EU940150	EU940226	–	–
<i>Hyaloscypha vitreola</i>	M236	EU940156	–	–	–
	M39	EU940155	–	–	–
<i>Hymenoscyphus pseudoalbidus</i>	FC-2799	–	AB705220	AB705213	–
<i>Hyphodiscus hymeniophilus</i>	CBS 529.87	GU727555	–	–	–
	CBS 602.77	–	DQ227264	–	DQ227270
<i>Leotia lubrica</i>	OSC 100001	NG_027596	–	–	–
	ZW-Geo59-Clark	AY789359	–	–	–
<i>Loramycetes macrosporus</i>	CBS 235.53	DQ470957	–	–	–
<i>Neofabraea perennans</i>	RGR 90.0107	–	AF281397	–	AF281476
<i>Phacidium lacerum</i>	CBS 130.30	DQ470976	–	–	–
<i>Phialocephala fortinii</i>	K93 395	–	–	DQ274568	DQ274834
<i>Psychrophila antarctica</i>	ANT80	KF768459	JX001628	KF768425	KF768438
	ANT92	KF768452	JX001640	KF768424	KF768437
	ANT94	KF768458	JX001639	KF768423	KF768436
<i>Psychrophila lutea</i>	HAILUO374	KF768456	JX001638	KF768421	KF768441
	HAILUO407	KF768455	JX001615	KF768422	KF768439
	HAILUO409	KF768454	JX001637	KF768420	KF768440
<i>Psychrophila olivacea</i>	HAILUO368	KF768457	JX001618	KF768427	KF768443
	HAILUO563	KF768453	JX001633	KF768426	KF768442
<i>Rhynchosporium orthosporum</i>	H4	–	HM627471	HM627456	KC819296
<i>Rutstroemia firma</i>	CBS 341.62	DQ470963	–	–	–
<i>Sclerotinia sclerotiorum</i>	CBS 499.50	AF431951	–	–	–
	CBS 499.50	DQ470965	–	–	–
	WZ0067	AY789347	–	–	–
<i>Tetracladium apiense</i>	CCM F-23199	EU883420	–	–	–
	CCM F-23399	EU883421	–	–	–
<i>Tetracladium breve</i>	CCM F-10501	EU883418	–	–	–
<i>Tetracladium ellipsoideum</i>	MIDUI20	KF768465	JX029111	KF768431	KF768444
	MIDUI21	KF768466	JX029124	KF768432	KF768451
	MIDUI30	KF768467	JX029113	KF768430	KF768445
<i>Tetracladium furcatum</i>	CCM F-06983	EU883428	–	–	–
	CCM F-11883	EU883432	–	–	–
<i>Tetracladium globosum</i>	HAILUO215	KF768460	JX029109	KF768433	KF768448
	MY24	KF768461	JX029118	KF768434	KF768449
	MY25	KF768462	JX029133	KF768435	KF768450
<i>Tetracladium marchalianum</i>	CCM F-26399	EU883415	–	–	–
	CCM F-11391	EU883417	–	–	–
	CCM F-19399	EU883423	–	–	–
<i>Tetracladium maxilliforme</i>	CCM F-529	EU883429	–	–	–
	CCM F-13186	EU883430	–	–	–
<i>Tetracladium palmatum</i>	CCM F-10001	EU883424	–	–	–
<i>Tetracladium psychrophilum</i>	HAILUO380	KF768464	JX029119	KF768429	KF768446
	MY376	KF768463	JX029129	KF768428	KF768447
<i>Tetracladium setigerum</i>	CCM F-19499	EU883426	–	–	–
	CCM F-20987	EU883425	–	–	–
<i>Trichoglossum hirsutum</i>	OSC61726	AY789313	–	–	–
<i>Vibrissea flavovirens</i>	MBH39316	AY789426	–	–	–
<i>Vibrissea truncorum</i>	CBS #258.91	FJ176874	–	–	–
	CUP 62562	AY789402	–	–	–

¹ LSU: large subunit nrDNA; ITS: Internal transcribed spacers 1 and 2 together with 5.8S nrDNA; TEF1: partial translation elongation factor 1-alpha gene; TUB: partial beta-tubulin gene.

performed in 25 µL reactions containing DNA template 1.0 µL, each forward and reverse primers 1.0 µL, 2 × MasterMix 12.5 µL (TIANGEN Co. Ltd., Beijing, China) and H₂O, using the following parameters: 94 °C for 40 s; followed by 40 cycles at 54 °C for LSU, 53 °C for ITS, 55 °C for TEF1 and 52 °C for TUB gene for 50 s and 72 °C for 60 s; and a final extension at 72 °C for 7 min. The PCR products were sequenced with primers mentioned above by Invitrogen Biotechnology Co. Ltd. (Beijing, China). Sequences were compared to accessions in the GenBank database via BLASTn searching to find the most likely taxonomic designation (Table 2).

Sequence data of the four genes were aligned with Clustal X (Thompson et al. 1997). Further manual alignment was carried out with MEGA v. 5 (Tamura et al. 2011) and alignments were deposited in TreeBASE (www.treebase.org, submission no. S16864). Maximum Parsimony (MP) analyses were conducted using PAUP v. 4.0b10 (Swofford 2002) and Bayesian analysis using MrBayes v. 3.1.2 (Altekar et al. 2004). For the MP analysis, ambiguously aligned regions were excluded from all analyses. An unweighted parsimony (UP) analysis was performed. Trees were inferred using the heuristic search option with TBR branch swapping and 1 000 random sequence addi-

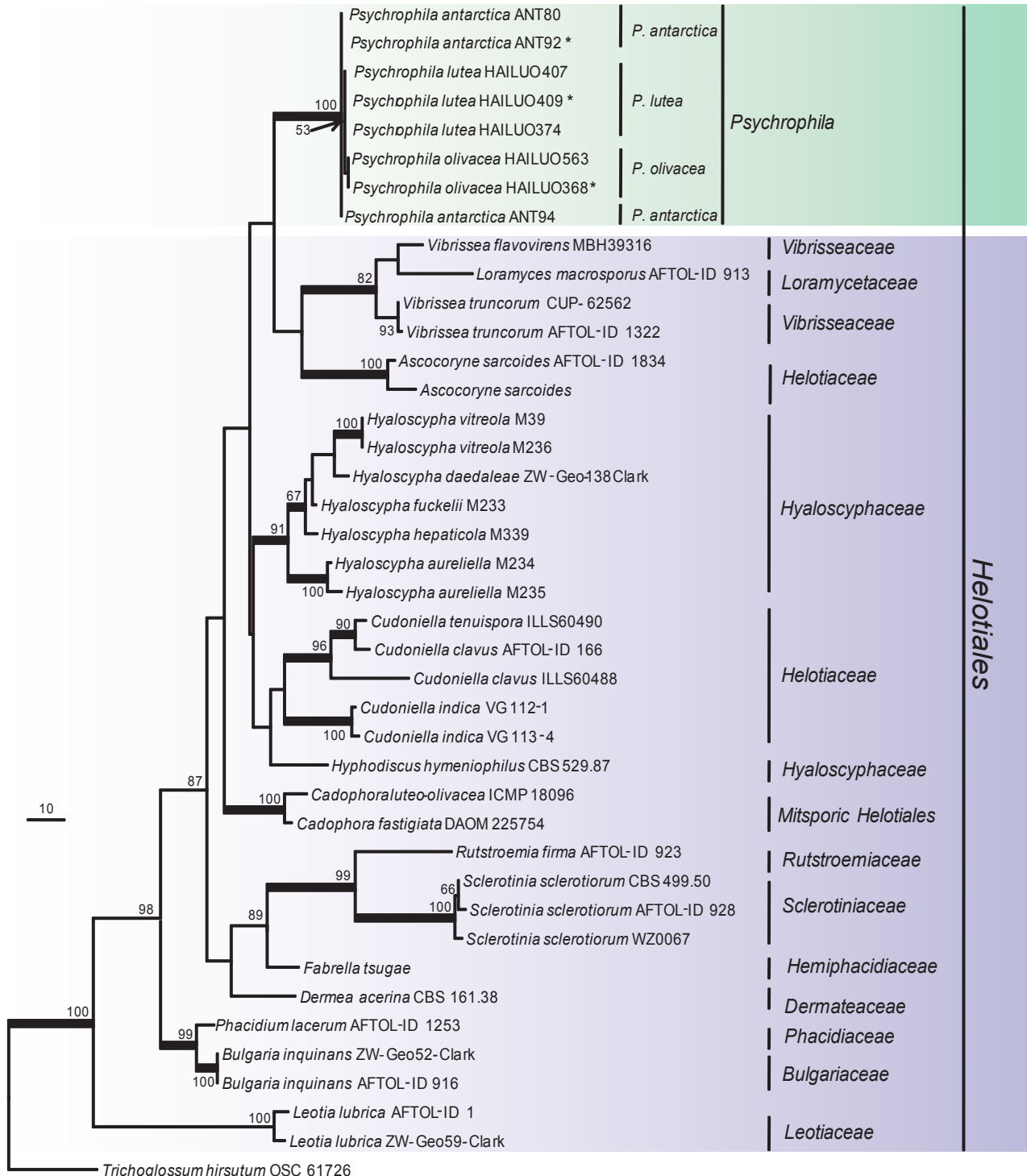


Fig. 1 Phylogenetic tree derived from maximum parsimony analysis based on LSU rDNA sequences (TL = 610, CI = 0.5607, RI = 0.7609, HI = 0.4393 and RC = 0.4266). *Trichoglossum hirsutum* OSC61726 was used as outgroup. The LSU alignment consists of 851 characters, with 184 phylogenetically informative positions. Bootstrap values of more than 50 % are shown on the respective branches and significant Bayesian posterior probability ($\geq 95\%$) are indicated as bold branches. Ex-type cultures are marked with asterisks (*).

tions. Branches of zero length were collapsed and all equally most parsimonious trees were saved. Descriptive tree statistics such as tree length (TL), consistency index (CI), retention index (RI), rescaled consistency index (RC) and homoplasy index (HI), were calculated for trees generated. Clade stability was assessed using bootstrap analysis with 1 000 replicates, each with 10 replicates of random stepwise addition of taxa. For the Bayesian analyses, the models of evolution were estimated by using MrModeltest v. 2.3 (Nylander 2004). Posterior probabilities (PP) (Rannala & Yang 1996, Zhaxybayeva & Gogarten 2002) were determined by Markov Chain Monte Carlo sampling (MCMC). Six simultaneous Markov chains were run for 1 000 000 generations and trees were sampled every 100th

generation (resulting in 10 000 total trees). The first 2 000 trees represented the burn-in phase of the analyses and were discarded and the remaining 8 000 trees were used for calculating posterior probabilities (PP) in the majority rule consensus tree. Trees were visualised in TreeView v. 1.6.6 (Page 1996).

Unique fixed nucleotide positions are used to characterise and describe several sterile species (see applicable species notes). For the sterile species that was described, the closest phylogenetic neighbour(s) were selected from Fig. 3 and 4, and this focused dataset was subjected to SNP analyses. These single nucleotide polymorphisms (SNPs) were determined for each aligned data partition using DnaSP v. 5.00.07 (Librado & Rozas 2009).

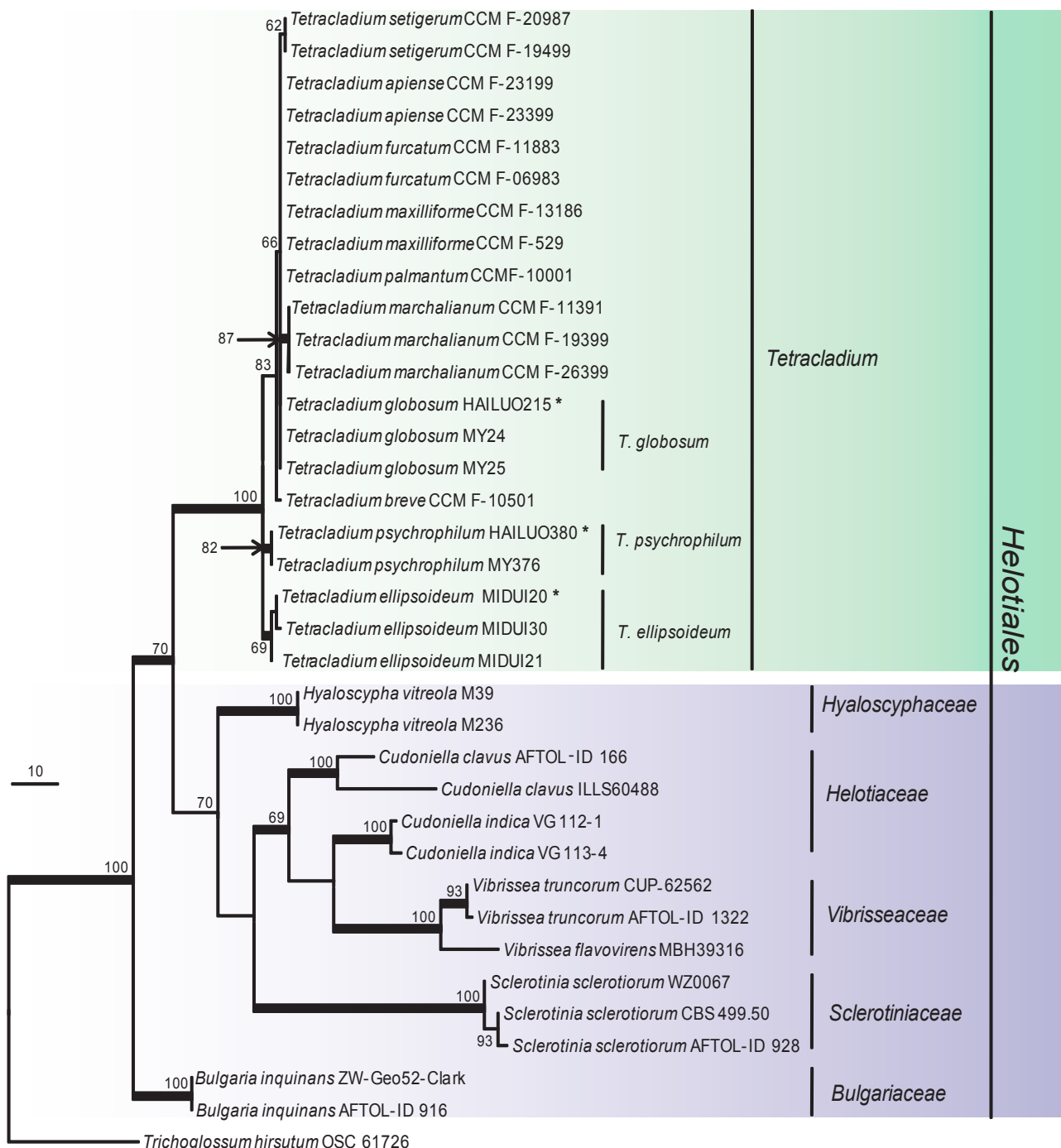


Fig. 2 Phylogenetic tree derived from maximum parsimony analysis based on LSU rDNA sequences (TL = 325, CI = 0.7815, RI = 0.9015, HI = 0.2185 and RC = 0.7046). *Trichoglossum hirsutum* OSC61726 was used as outgroup. The LSU alignment consists of 845 characters, with 151 phylogenetically informative positions. Bootstrap values of more than 50 % are shown on the respective branches and significant Bayesian posterior probability (≥ 95 %) are indicated as bold branches. Ex-type cultures are marked with asterisks (*).

RESULTS

In the current investigation, 1 428 fungal isolates were obtained from 350 samples, which were mainly collected from seven glaciers on the Qinghai-Tibet Plateau; a few specimens were collected from Antarctica. Isolates were preliminarily identified to belong to 78 genera representing 150 species. About one-tenth of these isolates were psychrophilic (stenopsychrophile), mostly belonging to the genera *Pseudogymnoascus*, *Phoma*, *Tetracladium* and *Psychrophila*, the new genus described in this paper. Based on the preliminary identification, 16 isolates belonging to *Helotiales*, which were the most frequently encountered cold-adapted fungi, were selected to study in more detail.

Phylogenetic analysis and SNP detection

The phylogenetic relationships were determined for 16 isolates. According to the phylogenetic trees based on the partial large subunit nrDNA (LSU), 16 isolates clustered into two independent clades, one was strongly supported and well separated from other known genera in the *Helotiales* (Fig. 1) and should represent a new genus and the other eight isolates clustered within the *Tetracladium* clade (Fig. 2). In the phylogenetic trees (Fig. 3, 4) generated from combined sequences of ITS+TEF1+TUB, the isolates in Fig. 1 clustered into one clade comprising three subclades that were well supported and separated from each other. Based on phylogenetic relationships and morphological characteristics, a new genus, *Psychrophila*, is proposed to accommodate these three new species (*P. antarctica*, *P. lutea* and *P. olivacea*).

Tetracladium is one of the three aquatic genera with tetradic conidia that were described by de Wildeman (1893, 1894, 1895). According to our phylogenetic trees (Fig. 2, 4), isolates in the present study formed three independent subclades that could not be assigned to any known species.

LSU regions had relatively few informative sites for the studied strains and were therefore not selected as good markers at species level. The remaining three loci had varied success for species identification and all of the sterile new species described here could be identified by all three loci.

Taxonomy

Psychrophila M.M. Wang & Xing Z. Liu, *gen. nov.* — MycoBank MB801296

Etymology. *Psychrophila* means cold-loving and is referring to those fungi well adapted to low temperature habitats.

Type species. *Psychrophila antarctica* M.M. Wang & Xing Z. Liu.

Colonies on PDA slow-growing, cream-white, yellowish or dark-olive to dark-brown, with sparse aerial mycelium; vegetative hyphae hyaline, smooth, thick-walled, transversely septate, most agglomerate to bundles, or swollen to moniliform. The cells of aerial hyphae often aggregated in dense clumps, hyphae deep immersed into the agar. *Conidiogenous cells* phialidic, enteroblastic, hyaline, flask-shaped, apically tapering into a broad funnel, bottleneck-like constriction; the collarete wedge-shaped to campanulate and widely flaring. *Conidiophores* reduced to

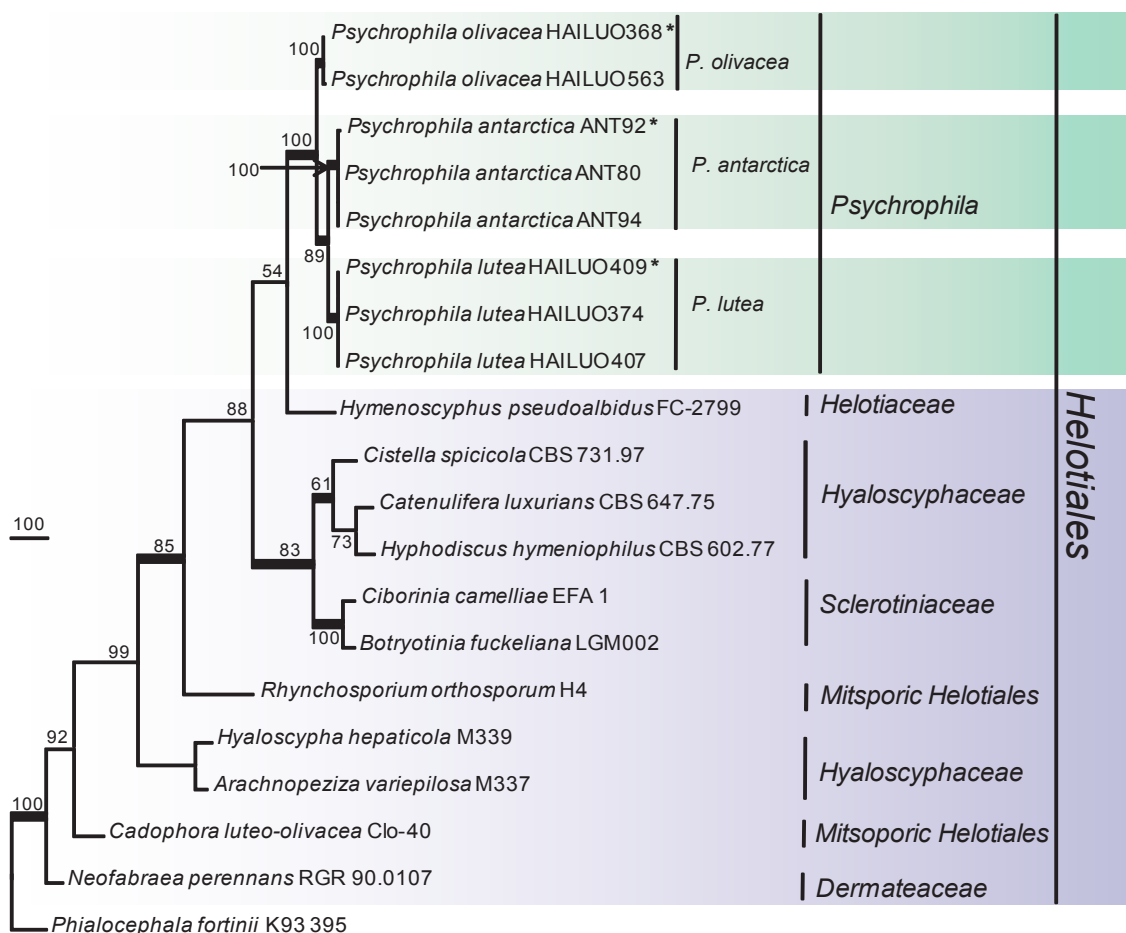


Fig. 3 Phylogenetic tree derived from maximum parsimony analysis based on combined ITS+TEF1+TUB sequences (TL = 2295, CI = 0.7085, RI = 0.7600, HI = 0.2915 and RC = 0.5384). *Phialocephala fortinii* K93 395 was used as outgroup. The length of the three genes alignment was 1 383 characters, with 746 phylogenetically informative positions. Bootstrap values of more than 50 % are shown on the respective branches and significant Bayesian posterior probability ($\geq 95\%$) are indicated as **bold** branches. Ex-type cultures are marked with asterisks (*).

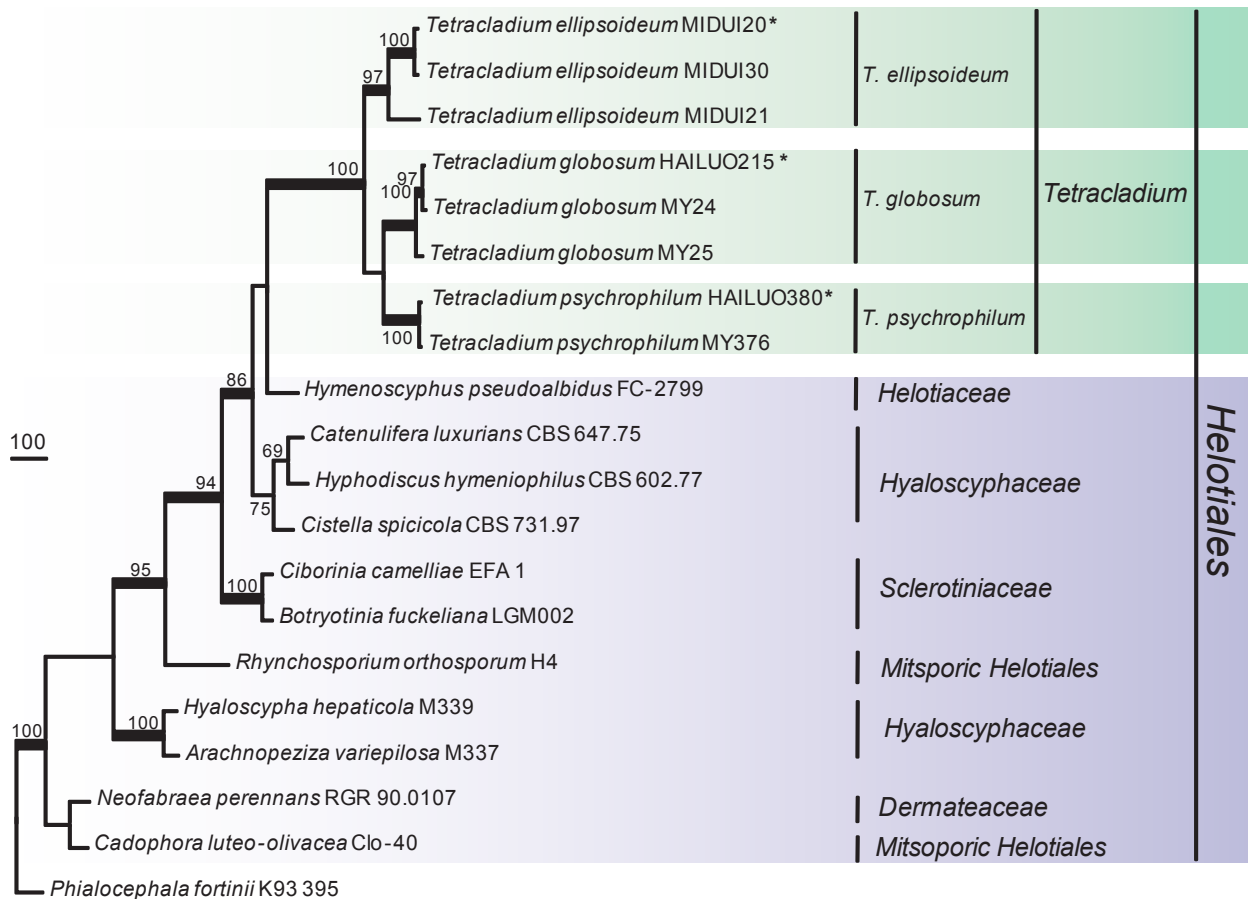


Fig. 4 Phylogenetic tree derived from maximum parsimony analysis based on combined ITS+TEF1+TUB sequences (TL = 2881, CI = 0.6977, RI = 0.7565, HI = 0.3023 and RC = 0.5278). *Phialocephala fortinii* K93 395 was used as outgroup. The length of the three genes alignment was 1 577 characters, with 1 043 phylogenetically informative positions. Bootstrap values of more than 50 % are shown on the respective branches and significant Bayesian posterior probability (≥ 95 %) are indicated as **bold** branches. Ex-type cultures are marked with asterisks (*).

conidiogenous cells, sometimes short, or much differentiated. *Conidia* hyaline, smooth, aseptate, pyriform to globose, within a single conidiogenous locus.

Habitat — Cold environments.

Notes — Species with phialophora-like asexual morphs in the *Helotiales* include: *Ascocoryne* with *Coryne* asexual morphs, which have hyaline, more or less penicillate conidiophores and phialides that lack visible collarettes; asexual morphs of some species of the *Dermateaceae*, such as *Mollisia* and *Pyrenopeziza*, might be accommodated in *Cadophora*, which has more or less pigmented vegetative hyphae, pale to hyaline phialides and collarettes (Gams 2000); the asexual morph of *Hyphodiscus hymeniophilus* is *Catenulifera rhodogena*, which has cylindrical to ampulliform phialides, long and cylindrical collarette, and conidia born in chains or in droplets (Hosoya 2002), in contrast, species in the new genus *Psychrophila* have hyaline vegetative hyphae, phialides, and collarettes; conidiophores are reduced to conidiogenous cells, sometimes short, or much differentiated; collarettes are wedge-shaped to campanulate and widely flaring; and conidia are hyaline, pyriform to globose. The combination of a cold-adapted nature, morphological characters, and phylogenetic relationships well supports the establishment of the new genus *Psychrophila* (Fig. 1).

Psychrophila antarctica M.M. Wang & Xing Z. Liu, *sp. nov.* — MycoBank MB801298; Fig. 5

Etymology. *Antarctica* refers to the type locality of this fungus.

Colony on PDA at 10 °C attaining 25 mm diam after 4 wk, OGT 20 °C, eurypsychrophile; colonies cream white, aerial

mycelium less abundant or sparse on the surface of the colony. *Conidiophores* sometimes short, or much differentiated, *conidiogenesis* phialidic, phialides short, hyaline, flask-shaped, 5.1–8.0 × 2.5–4.5 μm (mean ± S.D. = 6.4 ± 0.89 × 3.5 ± 0.77 μm, n = 30), apically tapering into a broad funnel, bottleneck-like constriction; the collarette 2.1–4 μm (mean ± S.D. = 2.9 ± 0.56 μm, n = 30), wedge-shaped, widely flaring; vegetative hyphae hyaline, sometimes agglomerate to bundles or swollen to irregular shapes, 2–4 μm. *Conidia* hyaline, 1-celled, smooth, mostly globose, 2.1–3.5 μm diam (mean ± S.D. = 2.7 ± 0.47 μm, n = 30).

Specimen examined. ANTARCTIC, Great Wall Station, S62°12' W58°57', from soil, Jan. 2011, T. Zhang (dried culture HMAS244374 holotype, living culture ex-type CGMCC315133 (ANT92)).

Other isolates examined. ANTARCTIC, Great Wall Station, S62°12' W58°57', from soil, Jan. 2011, T. Zhang, living cultures ANT80, ANT94.

Notes — *Psychrophila antarctica* is a psychrotolerant fungus with an OGT of 20 °C. This species is known from both Antarctica and the Qinghai-Tibet Plateau, whose origin and evolution deserve further studies.

Psychrophila lutea M.M. Wang & Xing Z. Liu, *sp. nov.* — MycoBank MB801299; Fig. 6

Etymology. *Lutea* refers to the yellow colour of the colony.

Cultures sterile. *Psychrophila lutea* differs from its closest phylogenetic neighbour, *P. antarctica* (Fig. 3), by unique fixed alleles in three loci based on alignments of the separate loci deposited in TreeBASE as study S16864: ITS positions 76 (A),

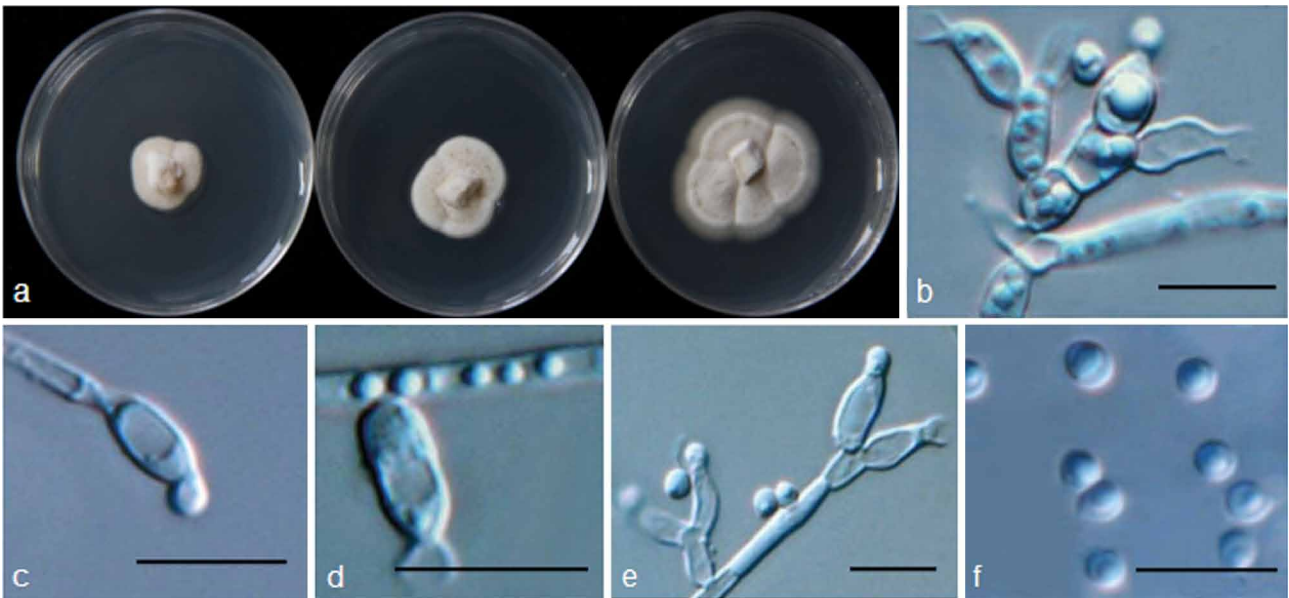


Fig. 5 *Psychrophila antarctica* (from strain ANT92) a. Colony morphology at three temperatures after 4 wk (left-to-right: 4, 10 and 20 °C); b–e. conidiophores and conidiogenous cells; f. conidia. — Scale bars = 10 µm.

316 (C), 413 (C), 416 (A), 449 (T) and 454 (T); TUB positions 134 (T), 138 (A), 146 (A), 147 (A), 170 (A), 206 (C), 294 (T), 303 (C), 305 (G), 314 (T) and 356 (G); TEF1 positions 174 (C), 208 (C), 247 (C), 283 (G), 297 (A) and 327 (A).

Colony on PDA at 10 °C attaining 15 mm diam after 4 wk, OGT 20 °C, eurypsychrophile; bright to brown-yellow, part of the colonies submerged in the medium, hyphae above the medium compacted densely, aerial mycelium absent or sparse, hyaline; vegetative hyphae yellow or brown, smooth-walled, 2–8 µm; aggregated in dense clumps or bundles, sometimes swollen to irregular shapes. *Conidiophores* and *conidia* absent.

Specimen examined. CHINA, Sichuan, Hailuoguo Glacier, N29°33' E101°58', from soil, 20 Apr. 2011, M. Wang (dried culture HMAS244372 holotype, living ex-type culture CGMCC315134 = HAILUO409).

Other isolates examined. CHINA, Sichuan, Hailuoguo Glacier, N29°33' E101°58', from soil, 20 Apr. 2011, M. Wang, living cultures HAILUO374, HAILUO407.

Notes — We have used some low nutrient media such as corn meal agar (CMA) and water agar (WA) to induce strains of *P. lutea* to sporulate without success. Phylogenetic analyses showed that it formed a distinct clade most closely related to

P. antarctica (Fig. 1, 3) but could be differentiated from the later by SNP analysis.

Psychrophila olivacea M.M. Wang & Xing Z. Liu, *sp. nov.* — MycoBank MB801300; Fig. 7

Etymology. *Olivacea* refers to the olive colour of the colony.

Cultures sterile. *Psychrophila olivacea* differs from its closest phylogenetic neighbour, *P. antarctica* and *P. lutea* (Fig. 3), by unique fixed alleles in three loci based on alignments of the separate loci deposited in TreeBASE as study S16864.

P. antarctica: ITS positions 113 (C), 116 (A), 133 (A), 308 (C), 343 (A), 346 (G), 364 (C), 411 (G), 413 (C), 425 (G), 431 (G), 439 (G), 451 (A) and 454 (T); TUB positions 116 (C), 137 (T), 151 (G), 163 (T), 198 (T), 199 (A), 220 (C), 223 (T), 295 (C), 304 (G), 306 (C), 328 (C) and 371 (T); TEF1 positions 174 (C), 195 (G), 203 (A), 208 (C), 247 (C), 252 (C), 297 (A), 306 (T), 307 (T), 308 (G), 313 (A), 327 (C), 333 (T) and 340 (T).

P. lutea: ITS position 113 (C), 116 (A), 308 (C), 316 (T), 317 (C), 333 (C), 343 (A), 346 (G), 364 (C), 411 (G), 416 (G), 425 (G), 431 (G), 439 (G), 449 (T), 451 (A) and 454 (T); TUB positions

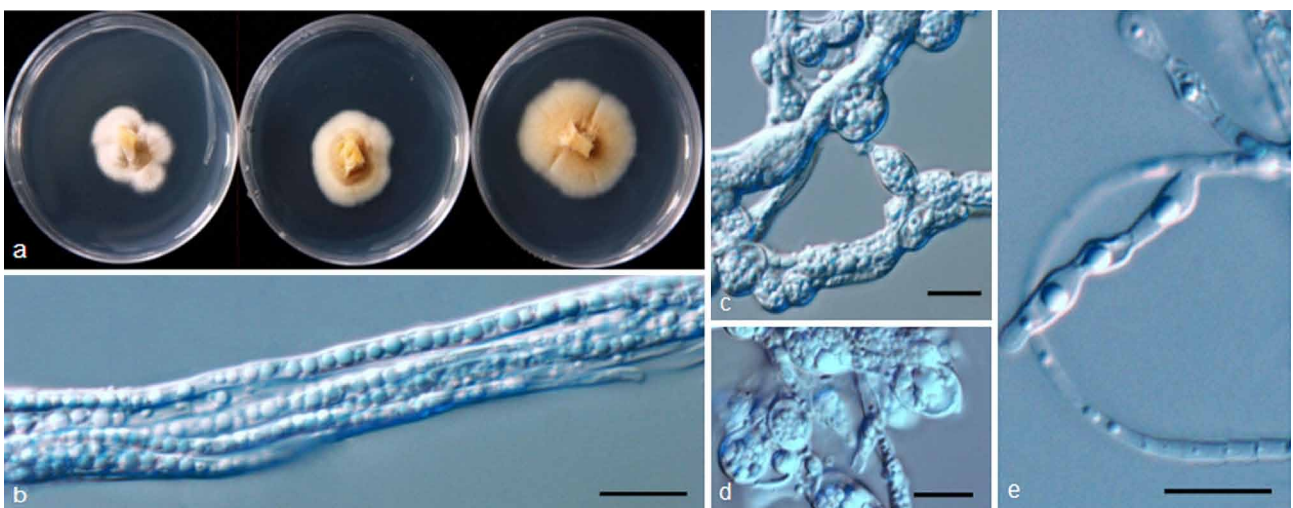


Fig. 6 *Psychrophila lutea* (from strain HAILUO409). a. Colony morphology at three temperatures after 4 wk (left-to-right: 4, 10 and 20 °C); b–e. swollen and aggregated hyphae. — Scale bars = 10 µm.

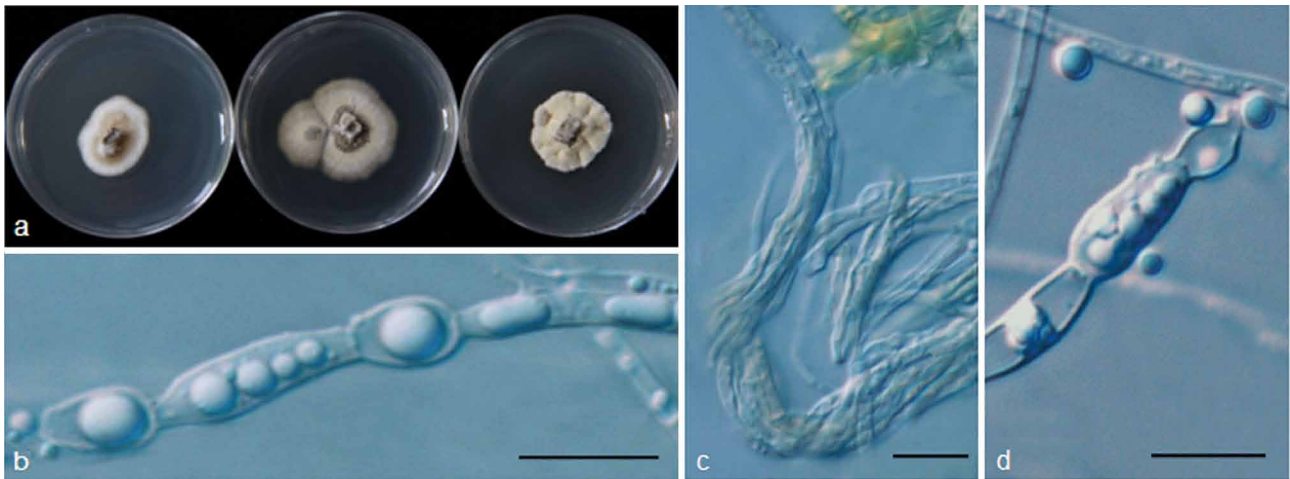


Fig. 7 *Psychrophila olivacea* (from strain HAILUO368). a. Colony morphology at three temperatures after 4 wk (left-to-right: 4, 10 and 20 °C); b–d. aggregated hyphae. — Scale bars = 10 µm.

134 (C), 138 (G), 151 (G), 163 (T), 170 (G), 199 (A), 206 (T), 223 (T), 294 (A), 295 (C), 303 (T), 304 (G), 305 (G), 306 (C), 314 (G), 316 (A), 356 (A) and 371 (T); TEF1 positions 195 (G), 203 (A), 252 (C), 283 (A), 306 (T), 307 (T), 308 (G), 313 (A), 327 (C), 333 (T) and 340 (T).

Colony on PDA at 10 °C attaining 10–15 mm diam after 4 wk, growth rate similar at 10 and 20 °C, stenopsychrophile; light to dark olive, sometimes appearing light grey on the surface because of some young aerial hyphae; part of the colonies immersed in the medium, some hyphae above the medium compact densely, colony surface sometimes furrowed; aerial hyphae sparse, hyaline or olive, vegetative hyphae, olive to dark olive, smooth-walled, 2–7 µm; aggregate in dense clumps or rhizomorphs, sometimes swollen to irregular shapes. *Conidiophores* and *conidia* absent.

Specimen examined. CHINA, Sichuan, Hailuoguo Glacier, N29°33' E101°58', from soil, 20 Apr. 2011, *M. Wang* (dried culture HMAS244375 holotype, living culture ex-type CGMCC315135 = HAILUO368).

Other isolate examined. CHINA, Sichuan, Hailuoguo Glacier, N29°33' E101°58', from soil, 20 Apr. 2011, *M. Wang*, living culture HAILUO563.

Notes — No conidia or conidiophores were observed for *P. olivacea* on PDA, CMA and WA. *Psychrophila olivacea* differs from *P. lutea* in the colony morphology and OGT.

Tetracladium globosum M.M. Wang & Xing Z. Liu, *sp. nov.* — MycoBank MB801301; Fig. 8

Etymology. *Globosum* refers to its globose conidia.

Colonies on PDA at 10 °C attaining 30–45 mm diam after 4 wk, pale yellow to light pinkish, OGT 10 °C, stenopsychrophile; part of the colony immersed in the medium, aerial hyphae sparse and hyaline; vegetative hyphae hyaline, smooth, thin-walled, transversely septate, 1–4 µm. *Conidia* 1-celled, hyaline, globose, smooth-walled, 3.0–5.5 µm (mean ± S.D. = 4.4 ± 0.81 µm, n = 30), attaching to the hyphae with very short conidiophores, which are not obvious.

Specimens examined. CHINA, Sichuan, Hailuoguo Glacier, N29°33' E101°58', from soil, 20 Apr. 2011, *Manman Wang*, dried culture specimen HMAS244377 holotype, living culture ex-type CGMCC315136 = HAILUO215.

Other isolates examined. CHINA, Yunnan, Mingyong Glacier, N28°27' E98°45', from soil, 4 May 2011, *M. Wang*, living cultures MY24, MY25.

Notes — Species described in the genus *Tetracladium* are all aquatic and mostly inhabit decaying litter in streams and rivers (Bärlocher 1992). *Tetracladium* species produce tetra-radiate conidia, which are thought to aid in their colonisation of substrates (Read et al. 1992). Unlike the previously described species, *T. globosum* has globose conidia, indicating that tetra-radiate conidia may be an ecologically adapted characteristic. The OGT

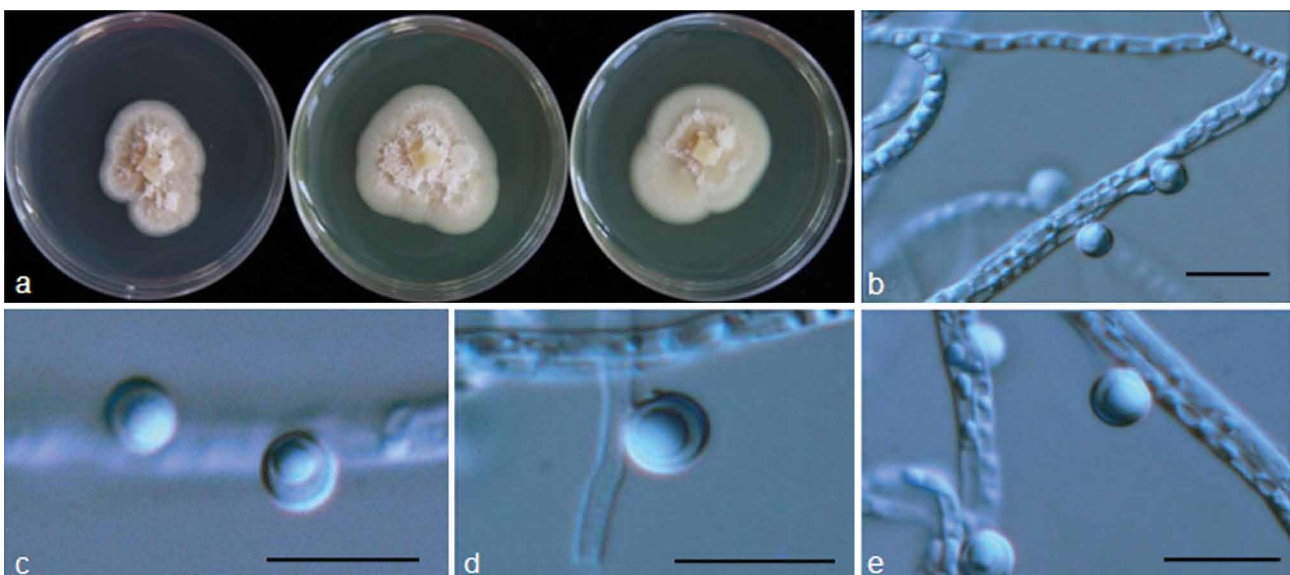


Fig. 8 *Tetracladium globosum* (from strain HAILUO215). a. Colony morphology at three temperatures after 4 wk (left-to-right: 4, 10 and 20 °C); b–e. conidia and hyphae. — Scale bars = 10 µm.

is 10 °C but the fungus can also grow at 20 °C. It is interesting that the OGT of *T. globosum* varied among different isolates. This phenomenon has also been observed in other fungi such as *Pseudogymnoascus pannorum*, indicating psychrophily may be an adapted character (Kochkina et al. 2007).

Tetracladium ellipsoideum M.M. Wang & Xing Z. Liu, *sp. nov.*
— MycoBank MB801302; Fig. 9

Etymology. *Ellipsoideum* refers to the shape of the conidia.

Colony on PDA at 10 °C attaining 30–40 mm diam after 4 wk, pale to bright yellow, OGT at 10 °C, stenopsychrophile; aerial hyphae absent or sparse; vegetative hyphae hyaline, smooth, thin-walled, transversely septate, 1–3 µm. *Conidia* borne on

short, undifferentiated or sessile pedicels (up to 1 µm long), 1-celled, hyaline, ellipsoid, smooth-walled, 4–6.8 × 2–3.4 µm (mean ± S.D. = 5.3 ± 0.69 × 3.7 ± 0.67 µm, n = 30).

Specimen examined. CHINA, Tibet, Midui Glacier, N29°27' E96°30', from soil, 16 Oct. 2009, *Manman Wang* (dried culture specimen HMAS244378 holotype, culture ex-type CGMCC315137 = MIDUI20).

Other isolates examined. CHINA, Tibet, Midui Glacier, N29°27' E96°30', from soil, 16 Oct. 2009, *M. Wang*, living cultures MIDUI30, MIDUI21.

Notes — The morphology of *T. ellipsoideum* is very similar to that of *T. globosum*. *Tetracladium ellipsoideum* produces conidia that are pyriform to ellipsoid rather than globose as observed for *T. globosum*. Conidiophores are somewhat differentiated and obvious for *T. ellipsoideum* but not obvious for *T. globosum*.

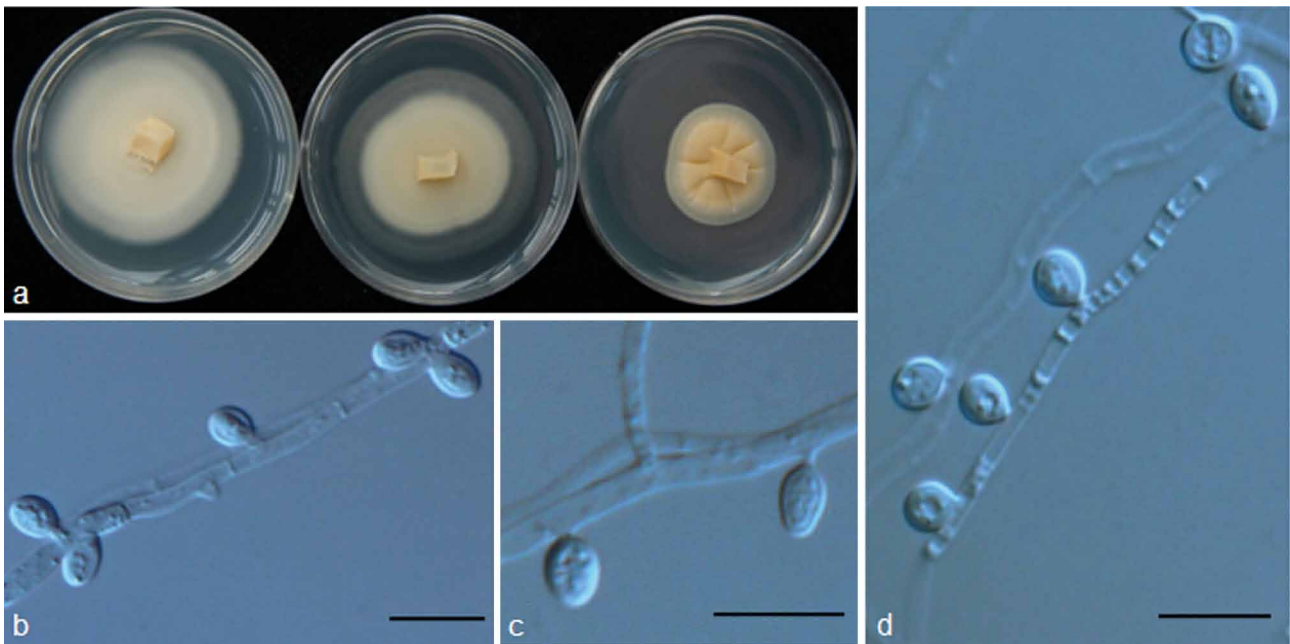


Fig. 9 *Tetracladium ellipsoideum* (from strain MIDUI20). a. Colony morphology at three temperatures after 4 wk (left-to-right: 4, 10 and 20 °C); b–d. conidia, conidiogenous cells and hyphae. — Scale bars = 10 µm.

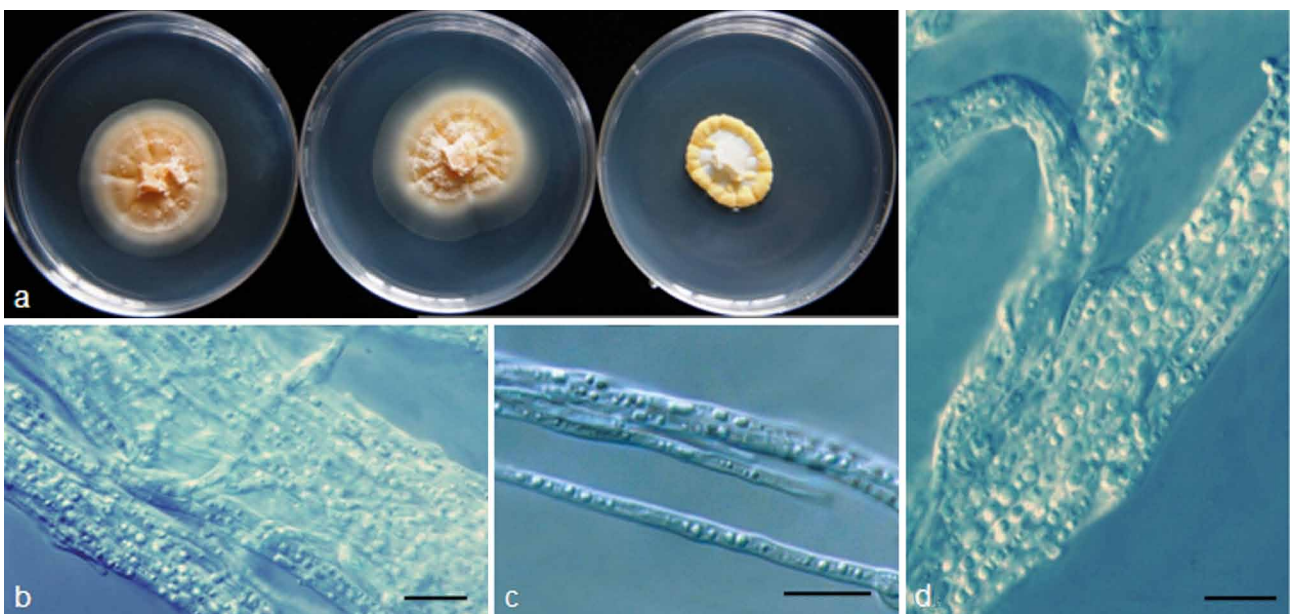


Fig. 10 *Tetracladium psychrophilum* (from strain HAILUO380). a. Colony morphology at three temperatures after 4 wk (left-to-right: 4, 10 and 20 °C); b–d. hyphae. — Scale bars = 10 µm.

Tetracladium psychrophilum M.M. Wang & Xing Z. Liu,
sp. nov. — MycoBank MB801304; Fig. 10

Etymology. *Psychrophilum* refers to the cold-loving character of the species.

Cultures sterile. *Tetracladium psychrophilum* differs from its closest phylogenetic neighbour, *T. globosum* (Fig. 4), by unique fixed alleles in three loci based on alignments of the separate loci deposited in TreeBASE as study S16864: ITS positions 97 (C), 108 (A), 310 (C), 336 (C), 337 (C), 397 (A), 416 (G), 427 (C) and 430 (G); TUB positions 125 (C), 131 (T), 140 (A), 152 (G), 157 (C), 185 (A), 186 (T) and 196 (C); TEF1 positions 78 (C), 80 (G), 84 (T), 99 (C), 153 (T), 161 (T) and 166 (C).

Colony slow-growing, attaining about 10–15 mm diam on PDA at 10 °C after 4 wk, cream-white to pale yellow; OGT 10 °C, MGT 20 °C, stenopsychrophile; aerial mycelium sparse or absent, conidia absent; vegetative hyphae hyaline, often aggregate, 2–14 µm. *Conidia* and *conidiophores* absent.

Specimen examined. CHINA, Sichuan, Hailuoguo Glacier, N29°33' E101°58', from soil, 20 Apr. 2011, M. Wang (dried culture HMAS244371 holotype, living ex-type culture CGMCC315139 = HAILUO380).

Other isolate examined. CHINA, Yunnan, Mingyong Glacier, N28°27' E98°45', from soil, 4 May 2011, M. Wang, living culture MY376.

Notes — *Tetracladium psychrophilum* grows slowly with OGT at 10 °C and MGT at 20 °C. Unlike *T. globosum* and *T. ellipsoideum*, *T. psychrophilum* did not produce conidia or conidiophores.

DISCUSSION

The rising of the Qinghai-Tibet Plateau was an important geological event in the Quaternary period when the average rate of rising was 1.0–1.1 mm/year. In the last 10 000 years, the plateau has raised 300–700 m and is still rapidly rising (Li & Wang 1983). This steady rising of the Qinghai-Tibet Plateau may have resulted in gradual environmental changes and niches that are inhabited by cold-adapted fungi.

Species of *Geomyces* and *Phoma* are widespread and especially common in northern temperate regions or Arctic and Antarctic permafrost soils. Traditionally, *Geomyces* is characterised by short but distinctly branched conidiophores that have spore chains formed directly from the conidiogenous cells. Members of the genus are psychrotolerant and have been reported from Arctic and Antarctic permafrost soils (Kirk et al. 2008, Blehert et al. 2009). Phylogenetic analyses indicate *Geomyces* and allied genera such as *Gymnostellatospora* and *Pseudogymnoascus* should be classified in the family *Pseudeurotiaceae* (Minnis & Lindner 2013). The best-known psychrophilic fungus in this group is perhaps *Pseudogymnoascus destructans*, which causes white nose syndrome and high mortality of bats (Blehert et al. 2009, Gargas et al. 2009). In our study, *Pseudogymnoascus pannorum* was found to be dominant on the Qinghai-Tibet Plateau, accounting nearly 10 % of all isolates obtained. Interestingly, although the morphological characteristics and temperature profile differ among isolates of this species, all isolates presented identical ITS and SSU rDNA sequences. *Phoma sclerotioides* is known as a snow mould and as the causal agent of brown root rot of alfalfa and other perennial forage legumes in temperate regions with harsh winters (Wunsch & Bergstrom 2011). It was also the most frequently isolated species from a decomposing high arctic moss *Schistidium apocarpum* (Leung et al. 2011). In this survey, we obtained 52 *P. sclerotioides* isolates in a total of 1 428 isolates from Qinghai-Tibet Plateau, with all of the strains of *P. sclerotioides* isolated from soil and identified based on comparison of morphologies and ITS and SSU rDNA sequences. *Phoma sclerotioides* has been divided

into seven intraspecific varieties, which differ in their morphology, temperature adaptation, and plant hosts (Sanford 1933, Berkenkamp & Baenziger 1969, Wunsch & Bergstrom 2011). Whether these varieties satisfy the phylogenetic concept of species should be considered in future research.

Psychrophila antarctica produces phialidic conidiogenous cells, which is also shared by some species in genera such as *Asco-coryne*, *Cadophora* and *Catenulifera* in the *Helotiales*. Although there are no special morphological characters in *Psychrophila*, the cold-adaptation of all isolates and species and the phylogenetic distinction from other genera well support its establishment as novel genus.

Tetracladium species are common in aquatic habitats, and they produced tetra- or radiate conidia that may facilitate their attachments to the substrate and provide a stable base for rapid germination (Read et al. 1992). *Tetracladium* species are primary agents of leaf litter and wood decay in streams and rivers. Some aquatic fungi including *Tetracladium* species are distributed worldwide (Descals 1997, Shearer et al. 2007, Wurzbacher et al. 2010) and in lotic habitats from the equator to the Arctic (Shearer et al. 2007). *Tetracladium* species have been documented from streams of alpine glaciers and from snow-covered soil (Robinson et al. 2000, Kuhnert et al. 2012), and are likely to be cold-adapted. The genus is rather homogeneous in terms of cultural characters and conidiogenesis. In addition to the type species, *T. marchalianum*, seven other species have been reported in the genus, e.g. *T. apiense* (Sinclair & Eicker 1981), *T. breve* (Roldán et al. 1989), *T. furcatum* (Descals & Webster 1983), *T. maxilliforme* (Ingold 1942), *T. nainitalense* (Sati et al. 2009), *T. palmatum* (Roldán et al. 1989) and *T. setigerum* (Ingold 1942). Recent phylogenetic analyses suggested that the genus is monophyletic and affiliated with *Helotiales* (Nikolcheva & Bärlocher 2002, Baschien et al. 2006, Letourneau et al. 2010, Seena et al. 2010). The three new species described here are paraphylogenetically clustered with aquatic *Tetracladium* species. *Tetracladium globosum* and *T. ellipsoideum* produce simple globose or clavate conidia on very short conidiophores or on the hypha (sessile), and *T. psychrophilum* does not produce conidia. All three are clearly different from previously described aquatic species in this genus and may reflect their adaptation to glacial niches with little free water. The three new species can grow well at temperatures below 20 °C and produce colonies that are light or bright yellow or light pink. Their colonies are often flat, with sparse or no aerial mycelium, which may be beneficial for cold-adaptation.

Acknowledgements This study was supported by the Ministry of Science and Technology of China (No. 2012ZX09301002-003) and 973 Programme (Grants No. 20009CB522302). The authors thank professor B. Jaffee (University of California, Davis) for his critical comments and English correction and editing.

REFERENCES

- Altekar G, Dwarkadas S, Huelsenbeck JP, et al. 2004. Parallel Metropolis-coupled Markov chain Monte Carlo for Bayesian phylogenetic inference. *Bioinformatics* 20: 407–415.
- Anupama PD, Praveen KD, Singh RK, et al. 2011. Psychrophilic and halotolerant strain of *Thelebolus microsporus* from Pangong Lake, Himalaya. *Mycosphere* 2: 601–609.
- Arenz BE, Blanchette RA. 2009. Investigations of fungal diversity in wooden structures and soils at historic sites on the Antarctic Peninsula. *Canadian Journal of Microbiology* 55: 46–56.
- Arenz BE, Held BW, Jurgens JA, et al. 2006. Fungal diversity in soils and historic wood from the Ross Sea Region of Antarctica. *Soil Biology & Biochemistry* 38: 3057–3064.
- Bärlocher F. 1992. Research on aquatic hyphomycetes: historical background and overview. In: Bärlocher F (ed), *The ecology of aquatic hyphomycetes*: 1–15. Springer-Verlag, Berlin.

- Baschien C, Marvanová L, Szewzyk U. 2006. Phylogeny of selected aquatic hyphomycetes based on morphological and molecular data. *Nova Hedwigia* 83: 311–352.
- Berestovskaya YY, Vasil'eva L, Chestnykh O, et al. 2002. Methanotrophs of the psychrophilic microbial community of the Russian Arctic tundra. *Mikrobiologiya* 71: 538–544.
- Berkenkamp B, Baenziger H. 1969. The reaction of sweet clover varieties to brown root rot. *Canadian Journal of Plant Science* 49: 181–183.
- Bhadury P, Mohammed BT, Wright PC. 2006. The current status of natural products from marine fungi and their potential as anti-infective agents. *Journal of Industrial Microbiology and Biotechnology* 33: 325–337.
- Biabini MAF, Laatch H. 1998. Advances in chemical studies of low-molecular weight metabolites of marine fungi. *Journal für praktische Chemie* 340: 589–607.
- Blanchette RA, Held BW, Jurgens JA, et al. 2004. Wood destroying soft-rot fungi in the historic expeditions huts of Antarctica. *Applied and Environmental Microbiology* 70: 1328–1335.
- Bleher DS, Hicks AC, Behr M, et al. 2009. Bat white-nose syndrome: An emerging fungal pathogen? *Science* 323 (5911): 227.
- Blunt JW, Copp BR, Hu WP, et al. 2007. Marine natural products. *Natural Product Reports* 24: 31–86.
- Bowman JP, Gosink JJ, McCammon SA, et al. 2004. Psychropiezophilic microorganisms. *Cell and Molecular Biology* 50: 429–436.
- Carbone I, Kohn LM. 1999. A method for designing primer sets for speciation studies in filamentous ascomycetes. *Mycologia* 91: 553–556.
- Cavicchioli R. 2006. Cold-adapted archaea. *Nature Reviews Microbiology* 4: 331–343.
- Cheng G. 1998. Glaciology and geocryology of China in the past 40 years: progress and prospect. *Journal of Glaciology and Geocryology* 20, 3: 213–226.
- Coetzee JC, Eicker A. 1990. A simple slide culture technique facilitating the viewing of growing fungi. *Phytophylactica* 22: 361–362.
- CConnell L, Redman R, Craig S, et al. 2006. Distribution and abundance of fungi in the soils of Taylor Valley, Antarctica. *Soil Biology & Biochemistry* 38: 3083–3094.
- D'Amico S, Collins T, Marx JC, et al. 2006. Psychrophilic microorganisms: challenges for life. *EMBO Reports* 7: 385–389.
- Dejardin RA, Ward EWB. 1971. Growth and respiration of psychrophilic species of the genus *Typhula*. *Canadian Journal of Botany* 49: 339–347.
- DeLong EF, Franks DG, Yayanos AA. 1997. Evolutionary relationship of cultivated psychrophilic and barophilic deep-sea bacteria. *Applied and Environmental Microbiology* 63: 2105–2108.
- Descals E. 1997. Ingoldian fungi: some field and laboratory techniques. *Bolletín de la Societat d'Història Natural de les Balears* 40: 169–221.
- Descals E, Webster J. 1983. Four new staurosporous hyphomycetes from mountain streams. *Transactions of the British Mycological Society* 80: 67–75.
- Duncan SM, Minasaki R, Farrell RL, et al. 2008. Screening fungi isolated from historic Discovery Hut on Ross Island, Antarctica for cellulose degradation. *Antarctic Sciences* 20: 463–470.
- Ebel R. 2006. Secondary metabolites from marine-derived fungi. In: Proksch P, Müller WEG (eds), *Frontiers in marine biotechnology*: 73–143. Horizon Bioscience, London.
- Flam F. 1994. Chemical prospectors scour the seas for promising drugs. *Science* 226: 1324–1325.
- Forster J. 1887. Über einige Eigenschaften leuchtender Bakterien. *Zentbl. Bakt. ParasitKde* 2: 337–340.
- Gams W. 2000. Phialophora and some similar morphologically little-differentiated anamorphs of divergent ascomycetes. *Studies in Mycology* 45: 187–199.
- Gargas A, Trest MT, Christensen M, et al. 2009. *Geomyces destructans* sp. nov. associated with bat white-nose syndrome. *Mycotaxon* 108: 147–154.
- Glass NL, Donaldson G. 1995. Development of primer sets designed for use with PCR to amplify conserved genes from filamentous ascomycetes. *Applied and Environmental Microbiology* 61: 1323–1330.
- Grünke S, Lichtschlag A, Beer D de, et al. 2012. Mats of psychrophilic thiotrophic bacteria associated with cold seeps of the Barents Sea. *Bio-geosciences Discussions* 9: 3917–3948.
- Gudjarnnson S. 1999. Bioactive marine natural products. *Rit Fiskideildar* 16: 107–110.
- Held BW, Jurgens JA, Duncan SM, et al. 2006. Assessment of fungal diversity and deterioration in a wooden structure at New Harbor, Antarctica. *Polar Biology* 29: 526–531.
- Höller U, Wright AD, Matthee GF, et al. 2000. Fungi from marine sponges: Diversity, biological activity and secondary metabolites. *Mycological Research* 104: 1354–1365.
- Hoshino YT, Terami F, Tkachenko OB, et al. 2010. Mycelial growth of the snow mold fungus, *Sclerotinia borealis*, improved at low water potentials: an adaptation to frozen environment. *Mycoscience* 51: 98–103.
- Hosoya, T. 2002. Hyaloscyphaceae in Japan (6): the genus *Hyphodiscus* in Japan and its anamorph *Catenulifera* gen. nov. *Mycoscience* 43: 47–57.
- Hsiang T, Matsumoto N, Millett SM. 1999. Biology and management of *Typhula* snow molds of turfgrass. *Plant Disease* 83: 788–798.
- Ingold CT. 1942. Aquatic hyphomycetes of decaying alder leaves. *Transactions of the British Mycological Society* 25: 339–417.
- Jurgens JA, Blanchette RA, Filley TR. 2009. Fungal diversity and deterioration in mummified woods from the ad Astra Ice Cap region in the Canadian High Arctic. *Polar Biology* 32: 751–758.
- Kirk PM, Cannon PF, Minter DW, et al. (eds). 2008. *Ainsworth & Bisby's Dictionary of the Fungi*. 10th ed. CABI Publishing.
- Kochkina GA, Ivanushkina NE, Akimov VN, et al. 2007. Halo- and psychro-tolerant Geomyces fungi from Arctic cryopegs and marine deposits. *Microbiology* 76, 1: 31–38.
- Kuhnert R, Oberkofler I, Peintner U. 2012. Fungal growth and biomass development is boosted by plants in snow-covered soil. *Microbial Ecology* 64, 1: 79–90.
- Letourneau A, Seena S, Marvanová L, et al. 2010. Potential use of barcoding to identify aquatic hyphomycetes. *Fungal Diversity* 40: 51–64.
- Leung G, Robson GD, Robinson CH. 2011. Characterisation of cold-tolerant fungi from a decomposing High Arctic moss. *Soil Biology & Biochemistry* 43: 1975–1979.
- Li BY, Wang FB. 1983. *Tibet Quaternary geology*. Science Publication House, P.R. China.
- Li X, Cheng GD. 1999. A GIS aided response model of high altitude permafrost to global change. *Science in China Series D* 42, 1: 72–79.
- Librado P, Rozas J. 2009. DnaSP v. 5: a software for comprehensive analysis of DNA polymorphism data. *Bioinformatics* 25: 1451–1452.
- Liu YQ, Yao TD, Jiao NZ, et al. 2009a. Culturable bacteria in glacial meltwater at 6,350 m on the east Rongbuk glacier, Mount Everest. *Extremophiles* 13: 89–99.
- Liu YQ, Yao TD, Jiao NZ, et al. 2009b. Bacterial diversity in the snow over Tibetan plateau glaciers. *Extremophiles* 13: 411–423.
- Liu YQ, Yao TD, Kang SC, et al. 2006. Seasonal variation of snow microbial community structure in the East Rongbuk glacier. *Mt Everest. Chinese Science Bulletin* 51: 1476–1486.
- Liu YQ, Yao TD, Kang SC, et al. 2007. Microbial community structure in major habitats above 6,000 m on Mount Everest. *Chinese Science Bulletin* 52: 2350–2357.
- Malosso E, Waite IS, English L, et al. 2006. Fungal diversity in maritime Antarctic soils determined using a combination of culture isolation, molecular fingerprinting and cloning techniques. *Polar Biology* 29: 552–561.
- Margaret E. 1966. Three new yeasts from Antarctic soils: *Candida nivalis*, *Candida gelida* and *Candida frigida* spp.n. *Antonie van Leeuwenhoek* 32: 25–28.
- Margesin R, Fell JW. 2008. *Mrakiella cryoconiti* gen. nov., sp. nov., a psychrophilic, anamorphic, basidiomycetous yeast from alpine and arctic habitats. *International Journal of Systematic and Evolutionary Microbiology* 58: 2977–2982.
- Margesin R, Schinner F. 1994. Properties of cold-adapted microorganisms and their potential role in biotechnology. *Journal of Biotechnology* 33: 1–14.
- Margesin R, Schinner F (eds). 1999. *Biotechnological Applications of Cold-Adapted Organisms*. Springer, Berlin.
- Margesin R, Sproer C, Schumann P, et al. 2003. *Pedobacter cryoconiti* sp. nov., a facultative psychrophile from alpine glacier cryoconite. *International Journal of Systematic and Evolutionary Microbiology* 53: 1291–1296.
- Minnis AM, Lindner DL. 2013. Phylogenetic evaluation of *Geomyces* and allies reveals no close relatives of *Pseudogymnoascus destructans*, comb. nov., in bat hibernacula of eastern North America. *Fungal Biology* 117: 638–649.
- Möller C, Dreyfuss MM. 1996. Microfungi from Antarctic lichens, mosses and vascular plants. *Mycologia* 88: 922–933.
- Morita RY. 1975. Psychrophilic bacteria. *Bacteriological Reviews* 39: 144–167.
- Mountfort DO, Rainey FA, Burghardt J, et al. 1998. *Psychromonas antarcticus* gen. nov., sp. nov., a new aerotolerant anaerobic, halophilic psychrophile isolated from pond sediment of the McMurdo ice shelf, Antarctica. *Archives of Microbiology* 169: 231–238.
- Nikolcheva LG, Bärlocher F. 2002. Phylogeny of *Tetracladium* based on 18S rDNA. *Czech Mycology* 53: 285–295.
- Nylander JAA. 2004. MrModeltest v2. Program distributed by the author. Evolutionary Biology Centre, Uppsala University.
- Onofri S, Barreca D, Selbmann L, et al. 2008. Resistance of Antarctic black fungi and cryptoendolithic communities to simulated space and Martian conditions. *Studies in Mycology* 61: 99–109.

- Page RDM. 1996. TreeView: An application to display phylogenetic trees on personal computers. *Computer Application of Biosciences* 12, 4: 357–358.
- Pietra F. 1997. Secondary metabolites from marine microorganisms – bacteria, protozoa, algae and fungi – achievements and perspectives. *Natural Product Reports* 14: 453–464.
- Price PB. 2000. A habitat for psychrophiles in deep Antarctic ice. *Proceedings of the National Academy of Sciences USA* 97: 1247–1251.
- Rannala B, Yang Z. 1996. Probability distribution of molecular evolutionary trees: a new method of phylogenetic inference. *Journal of Molecular Evolution* 43: 304–311.
- Rateb ME, Ebel R. 2011. Secondary metabolites of fungi from marine habitats. *Natural Product Reports* 28: 290–344.
- Read SJ, Moss ST, Jones EBG. 1992. Attachment and germination of conidia. In: Bärlocher F (ed), *The ecology of aquatic hyphomycetes*: 135–151. Springer-Verlag, Berlin.
- Richard WN, Palm ME, Johnstone K, et al. 1997. Ecological and physiological characterization of *Humicola marvinii*, a new psychrophilic fungus from Fellfield soils in the Maritime Antarctic. *Mycologia* 89, 5: 705–711.
- Robin S, Hall T, Turchetti B, et al. 2010. Cold-adapted yeasts from Antarctica and the Italian Alps – description of three novel species: *Mrakia robertii* sp. nov., *Mrakia blollopis* sp. nov. and *Mrakia niccombsii* sp. nov. *Extremophiles* 14: 47–59.
- Robinson CH. 2001. Cold adaptation in Arctic and Antarctic fungi. *New Phytologist* 151: 341–353.
- Robinson CT, Gessner MO, Callies KA, et al. 2000. Larch needle breakdown in contrasting streams of an alpine glacial floodplain. *Journal of the North American Benthological Society* 19, 2: 250–262.
- Roldán A, Descals E, Honrubia M. 1989. Pure culture studies on *Tetracladium*. *Mycological Research* 93: 452–465.
- Ruisi S, Barreca D, Selbmann L, et al. 2007. Fungi in Antarctica. *Reviews of Environmental Science and Biotechnology* 6: 127–141.
- Sanford GB. 1933. A root rot of sweet clover and related crops caused by *Plenodomus meilotti* Dearness & Sanford. *Canadian Journal of Research, Section C* 8: 337–348.
- Sati SC, Arya P, Belwal M. 2009. *Tetracladium nainitalense* sp. nov., a root endophyte from Kumaun Himalaya, India. *Mycologia* 101, 5: 692–695.
- Schipper MA. 1967. *Mucor strictus* hagem, a psychrophilic fungus, and *Mucor falcatus* sp.n. *Antonie Van Leeuwenhoek* 33, 2: 189–195.
- Seena S, Pascoal C, Marvanová L, et al. 2010. DNA barcoding of fungi: a case study using ITS sequences for identifying aquatic hyphomycete species. *Fungal Diversity* 44: 77–87.
- Selbmann L, Hoog GS de, Zucconi L, et al. 2008. Drought meets acid: three new genera in a dothidealean clade of extremotolerant fungi. *Studies in Mycology* 61: 1–20.
- Seo HJ, Bae SS, Lee JH, et al. 2005. *Photobacterium frigidophilum* sp. nov., a psychrophilic, lipolytic bacterium isolated from deep-sea sediments of Edison Seamount. *International Journal of Systematic and Evolutionary Microbiology* 55: 1661–1666.
- Shearer CA, Descals E, Kohlmeyer B, et al. 2007. Fungal biodiversity in aquatic habitats. *Biodiversity Conservation* 16: 49–67.
- Sinclair RC, Eicker A. 1981. *Tetracladium apiense*, a new aquatic species from South Africa. *Transactions of British Mycological Society* 76: 515–517.
- Singh SM, Puja G, Bhat DJ. 2006. Psychrophilic fungi from Schirmacher Oasis, East Antarctica. *Current Science* 90, 10: 1388–1392.
- Swofford DL. 2002. PAUP*. *Phylogenetic Analysis Using Parsimony* (and other methods). Version 4. Sinauer Associates, Sunderland, Massachusetts.
- Tamura K, Peterson D, Peterson N, et al. 2011. MEGA5: Molecular Evolutionary Genetics Analysis using Maximum Likelihood, Evolutionary Distance, and Maximum Parsimony Methods. *Molecular Biology and Evolution* 28: 2731–2739.
- Thompson JD, Gibson TJ, Plewniak F, et al. 1997. The ClustalX windows interface: flexible strategies for multiple sequence alignment aided by quality analysis tools. *Nucleic Acids Research* 24: 4876–4882.
- Traquirar JA, Smith DJ. 1982. Sclerotial strains of *Coprinus psychromorbidus*, a snow mold basidiomycete. *Canadian Journal of Plant Pathology* 4, 1: 27–36.
- Tronsmo AM, Hsiang T, Okuyama H, et al. 2001. Low temperature diseases caused by *Microdochium nivale*. In: Iriki N, Gaudet DA, Tronsmo AM, et al. (eds), *Low temperature plant microbe interactions under snow*: 75–86. Sapporo, Hokkaido National Agricultural Experimental Station.
- Verbist JF, Sallenave C, Pruchus YF. 2000. Marine fungal substances. *Studies in Natural Products Chemistry* 24: 979–1092.
- Vilgalys R, Hester M. 1990. Rapid genetic identification and mapping of enzymatically amplified ribosomal DNA from several *Cryptococcus* species. *Journal of Bacteriology* 172: 4238–4246.
- Wang L, Zhuang WY. 2004. Designing primer sets for amplification of partial calmodulin genes from penicillia. *Mycosystema* 23: 466–473.
- White TJ, Bruns T, Lee J, et al. 1990. Amplification and direct sequencing of fungal ribosomal RNA genes for phylogenetics. In: Innis MA, Gelfand DH, Sninsky JJ, et al. (eds), *PCR protocols: a guide to methods and applications*: 315–322. Academic Press, San Diego, California, USA.
- Wildeman E de. 1893. Note mycologiques. Fasc. II. *Annales de la Société Belge de Microscopie* 17: 35–68.
- Wildeman E de. 1894. Note mycologiques. Fasc. II. *Annales de la Société Belge de Microscopie* 17: 135–161.
- Wildeman E de. 1895. Note mycologiques. Fasc. VI. *Annales de la Société Belge de Microscopie* 17: 191–206.
- Wunsch MJ, Bergstrom GC. 2011. Genetic and morphological evidence that *Phoma sclerotioides*, causal agent of brown root rot of alfalfa, is composed of a species complex. *Phytopathology* 101: 594–610.
- Wurzbacher CM, Bärlocher F, Grossart HP. 2010. Fungi in lake ecosystems. *Aquatic Microbial Ecology* 59: 125–149.
- Xiang S, Yao T, An L, et al. 2005. 16S rRNA sequences and difference in bacteria isolated Muztag Ata Glacier at increasing depths. *Applied and Environmental Microbiology* 71: 4619–4627.
- Xiang SR, Shang TC, Chen Y, et al. 2009. Dominant bacteria and biomass in the Kuytun 51 Glacier. *Applied and Environmental Microbiology* 75: 7287–7290.
- Xin MX, Zhou PJ. 2007. *Mrakia psychrophila* sp. nov., a new species isolated from Antarctic soil. *Journal of Zhejiang University Science B* 8, 4: 260–265.
- Yang DQ, Wang JH, Bai Y, et al. 2008. Diversity and distribution of the prokaryotic community in near-surface permafrost sediments in the Tianshan Mountains, China. *Canadian Journal of Microbiology* 54: 270–280.
- Yao T, Xiang S, Zhang X, et al. 2006. Microorganisms in the Malan ice core and their relation to climatic and environmental changes. *Global Biogeochemical Cycles* 20, 1: GB1004.
- Zhang DC, Li HR, Xin YH, et al. 2008. *Phaeobacter arcticus* sp. nov., a psychrophilic bacterium isolated from the Arctic. *International Journal of Systematic and Evolutionary Microbiology* 58: 1384–1387.
- Zhang DC, Wang HX, Liu HC, et al. 2006. *Flavobacterium glaciei* sp. nov., a psychrophilic bacterium isolated from the China No. 1 glacier. *International Journal of Systematic and Evolutionary Microbiology* 56: 2921–2925.
- Zhang GS, Ma XJ, Niu FJ, et al. 2007. Diversity and distribution of alkaliphilic psychrotolerant bacteria in the Qinghai-Tibet Plateau permafrost region. *Extremophiles* 11: 415–424.
- Zhang XJ, Ma XJ, Wang NL, et al. 2009. New subgroup of Bacteroidetes and diverse microorganisms in Tibetan plateau glacial ice provide a biological record of environmental conditions. *FEMS Microbiology Ecology* 67: 21–29.
- Zhaxybayeva O, Gogarten JP. 2002. Bootstrap, Bayesian probability and maximum likelihood mapping: exploring new tools for comparative genome analyses. *Genomics* 3: 1–15.