

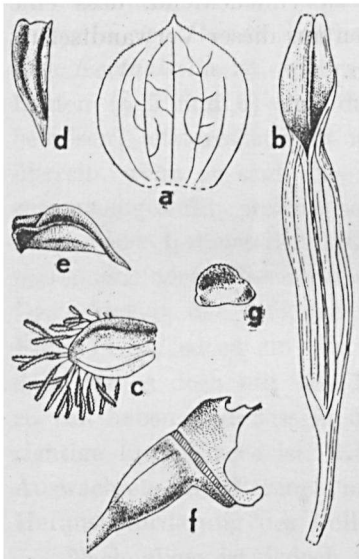
## AN INTERESTING NEW BULBOPHYLLUM

by

J. J. SMITH

(*Oegstgeest*).

**Bulbophyllum** (sect. *Cirrhopetalum*) **Jacobsonii** J. J. S. n. sp. — Rhizoma repens, teres. Pseudobulbi remoti, oblique ovoidei, manifeste quadranguli cum lateribus concavis, 1.8 cm longi, 0.75 et 0.95 cm diam.,



*Bulbophyllum Jacobsonii* J. J. S.

- a. Sepalum dorsale.
- b. Sepala lateralia.
- c. Petalum.
- d—e. Labella.
- f. Gynostemium.
- g. Anthera.

1-folii. Folium lanceolatum, apice recurvulum, basi brevissime conduplicato-petiolato-acuminatum, costa media supra sulcata subtus leviter obtuse prominente, carnosocoriaceum, 9.5 cm longum, 2.9 cm latum. Inflorescentia e basi pseudobulbi, adscendens, folio paulo brevior, subumbellata, c. 4-flora, pedunculo tenui, tereti, apicem versus sensim leviter incrassato, bene 10 cm longo, basi nonnullis vaginulis tubulosis, infra medium vaginula magnam partem tubulosa subulato-apiculata 0.75 cm longa donato. Bracteae convolutae, inexpansae subulatae, expansae lanceolato-triangulae, usque 0.8 cm longae. Flores conspicui. Sepalum dorsale valde concavum, expansum suborbiculare, brevissime abrupte acuminatum, acutum, basi latum, praesertim versus apicem dense minute conico-papilloso-ciliolatum, 5-nervium, c. 1 cm longum, 0.75 cm latum. Sepala lateralia pedi gynostemii inserta,

elongata, marginibus proximis valde incurvis inferne longitudine c. 1.8 cm conglutinata et plicam introrsam alte cariniformem formantia ceterum libera, marginibus exterioribus basi longitudine c. 0.6 cm liberis fenestram formantibus deinde incurvis et omnino conglutinatis laciniam magnam partem convexam formantia, marginibus angustissime tegentia, oblique

linearia, apice deficiente, basi leviter contracta, 5-nervia, 10 cm superantia, expansa una 0.73 cm lata. Petala parva, verticalia, porrecta, oblique subquingulari-elliptica, obtusa, bene dimidio superiore appendicibus (c. 27) clavatis obtusis basi brevissima filiformi excepta papillis patentissimis obtusis dense vestitis basin versus decrecentibus fimbriata, 3-nervia, 0.35 cm longa, fere 0.3 cm lata, absque fimbriis 0.225 cm longa, 0.175 cm lata, fimbriis usque 0.15 cm longis. Labellum parvum, mobile, subrectum,  $\frac{2}{5}$  partibus superioribus vix obtusangule recurvum, carnosum, glabrum, supra visum anguste triangulum, parte mediana longitudinaliter convexa basi abrupte humili, margine angusto patente basin versus dilatato, marginibus apice recurvulis paululum acuminatum, satis acutum, subtus crasse carinatum cum canalicula, basi truncatum, 0.3 cm longum, 0.12 cm latum. Gynostemium breve, crassum, leviter lateraliter compressum, marginibus obtusangule dilatatis, 0.2 cm longum, clinandrio alte excavato, pariete postico recurvulo truncato, auriculis porrectis clinandrium bene superantibus, oblique lanceolatis, setiformi-acuminatis. Anthera alte cucullata, supra visa subobovata, apice rotundata, basi leviter emarginata, connectivo valde incrassato celluloso-papilloso, 0.12 cm longa. Pes gynostemii cum ovario angulum obtusum faciens, incurvus, oblongus, truncatus, carnosus, canaliculatus, apice a sepalis lateralibus liber, 0.2 cm longus. Ovarium obconicum, 6-sulcatum, 0.23 cm longum, cum pedicello multo tenuiore 0.2 cm longo clavatum, minute furfuraceo-punctatum.

S u m a t r a: West coast, Soengai Darih, 1000 m. (A. V. THEUNISSEN, August 1924, cult. in Hort. E. JACOBSON sub n. 2202 et in Hort. Bog. sub n. 933. II. 11).

The nearest ally of this remarkable species is *B. mirum* J. J. S. from which it differs in the much longer peduncled, more-flowered inflorescences, the much larger flowers and differently shaped petals the appendages of which are densely covered with papillae. The proximate margins of the lateral sepals cohere in the basal portion and are free upwards; the exterior margins, on the contrary, are free at their base and cohere higher up so as to form a convex blade. In the cavity at the base the lip protrudes. The species demonstrates once more that a genus *Cirrhopetalum* cannot be upheld.

Dr. JACOBSON describes the colours as follows:

„Pseudobulbs green; leaves light green, waxy; peduncle greenish with purple, streaklike dots; bract greenish purple punctate; dorsal sepal greenish white dotted purple outside; lateral sepals light purple beneath greenish white at the base, inside light purple with a whitish

hue; petals greenish white fringed blackish purple; lip greenish white densely dotted light purple above, minutely punctate purple beneath; column transparently white with purple markings at the base; stigma greenish white; anther transparently white; pollinia pale yellow; ovary brownish white, pedicel greenish white, both purple dotted."

Description from a pseudobulb and an inflorescence preserved in alcohol. The tips of the lateral sepals were damaged.