

## NOTE XIII.

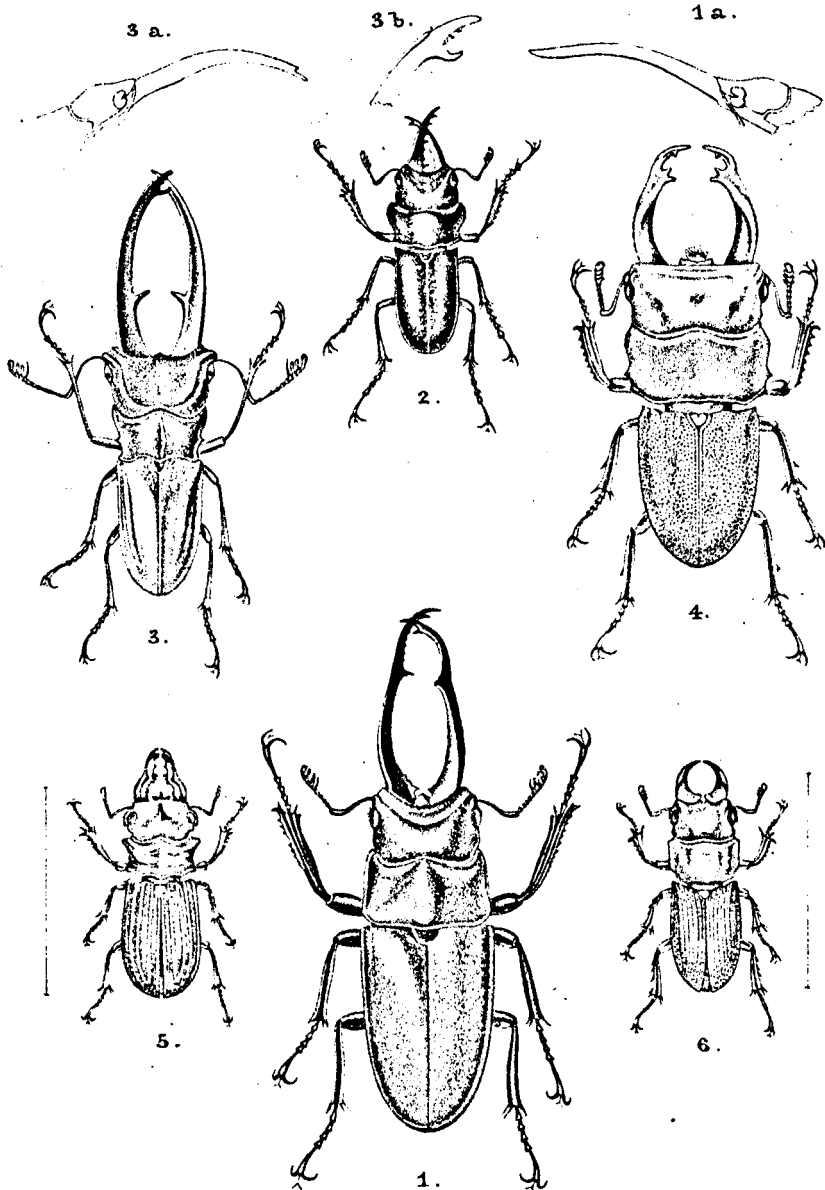
## EXPLANATION OF PLATE 2

BY

C. RITSEMA Cz.

- Fig. 1. *Prosopocoelus Pasteuri* Rits. ♂, from West-Java: Mt. Poentjak (Notes Leyden Museum, Vol. XIV (1892), p. 31).
- Fig. 2. *Prosopocoelus tarsalis* Rits. ♂, from Central-Java: Magelang (Notes Leyden Museum, Vol. XIV (1892), p. 191).
- Fig. 3. *Cyclommatus canaliculatus* Rits. ♂, from the island of Nias (Notes Leyden Museum, Vol. XIII (1891), p. 235).
- Fig. 4. *Eurytrachelus Hansteini* Albers, ♂, from West-Sumatra: Solok (Deutsche Entom. Zeitschr. Vol. XXXIII (1889), p. 235).
- Fig. 5. *Gnaphaloryx tricuspis* Rits. ♂, from West-Sumatra: Solok (Notes Leyden Museum, Vol. IV (1882), p. 163; — Midden-Sumatra, Supplement, 1892, p. 4).
- Fig. 6. *Aegus Leeuweni* Rits. ♂, from West-Sumatra: Solok (Notes Leyden Museum, Vol. IV (1882), p. 164; — id. Vol. XI (1889), p. 235, note; — Midden-Sumatra, Supplement, 1892, p. 4).

Leyden Museum, November 1892.



1, 2, 3. W. F. Jacobs  
 4, 5, 6. Dr. H. W. de Graaf } del. Dr. H. W. de Graaf lith. P. W. M. Trap impr.

- |                                           |                                        |
|-------------------------------------------|----------------------------------------|
| 1. <i>Prosopocoelus Pasteuri</i> Rits.    | 4. <i>Eurytrachelus Hansteini</i> Alb. |
| 2.     " <i>tarsalis</i> Rits.            | 5. <i>Gnaphaloryx tricuspis</i> Rits.  |
| 3. <i>Cyclommatus canaliculatus</i> Rits. | 6. <i>Aegus Leeuweni</i> Rits.         |