

INDEX

The hyphen separates the names of taxa at the left side (in most cases followed by a code) from numbers of pages, figures and plates at the right side. Names of accepted species are followed by a code of letters and numbers corresponding with their sequence in this paper. A means *Acriopsis*, B: *Bracisepalum*, Ch: *Chelonistele*, E: *Entomophobia*, G: *Geesinkorchis*, and N: *Nabalua*. Synonyms are followed by '=' and subsequently by the code of the species to which they belong. 'Excl.' refers to excluded species. — An asterisk indicates the page where the taxon is described; 'fig.' refers to a line-drawing; 'plate' to a coloured plate. Two unnumbered maps are given with their page number.

Acriopsidinae Dressler — 1

- Acriopsis* Reinw. ex Blume — 1, 2, 3*, 4 map
annamensis Guill. = ?A5c — 16
annamica Finet = ?A5c — 15, 16
borneensis Ridley = A2b — 7
carrii Holtum A1 — 2, 3, 5*, fig. 2
densiflora Lindley A2 — 2, 3, 5, 6*, 7
 var. *borneensis* (Ridley) Minderhoud &
 de Vogel A2b — 6, 7*, fig. 3f–g
 var. *densiflora* A2a — 6*, fig. 3a–e
floribunda Ames = A5b — 13
gracilis Minderhoud & de Vogel A3 — 1, 3, 5,
 7*, fig. 4, plate 1a
griffithii Rchb. f. = A5a — 11
harai Tuyama = ?A5a — 12, 13
indica Wight A4 — 3, 5, 8*, fig. 5, plate 1b
insulari-sylvatica Fukuyama = ?A5a — 12, 13
javanica Reinw. ex Blume A5 — 3, 5, 9*, 13, 15,
 16
 var. *auriculata* Minderhoud & de Vogel
 A5c — 1, 3, 10, 14*, 16, fig. 6
 var. *floribunda* (Ames) Minderhoud & de
 Vogel A5b — 10, 13*, fig. 1d–e (p. 11)
 var. *javanica* A5a — 3, 10*, 13, fig. 1a–c,
 f–h (p. 11), plate 1c, 1d
 var. *nelsoniana* (Bailey) J.J. Smith = A5a — 11
javanica (non Reinw. ex Bl.) Blume = A5c — 14
javanica (non Reinw. ex Bl.) Schltr. = A5b — 13
latifolia Rolfe Excl. — 16
nelsoniana Bailey = A5a — 11
 var. *pallidiflora* Schltr. = A5a — 12
papuana Kraenzlin = A5a — 12
philippinensis Ames = A5a — 12
picta Lindley = ?A5a — 11
purpurea Ridley = A2a — 7
ridleyi Hooker f. A6 — 2, 3, 5, 15*, fig. 7, plate
 2a, 2b
sumatrana Schltr. = ?A5a — 11, 13

Basigyne J.J. Smith — 19

- Bracisepalum* J.J. Smith — 17, 19*
densiflorum de Vogel B1 — 19, 20*, fig. 8,
 plate 2c
selebicum J.J. Smith B2 — 18, 19, 20*, fig. 9

Chelonanthera Blume — 23, 24

- clypeata* (Lindley) Pfitzer — 23
gibbosa Blume — 23
sulphurea Blume = Ch10a — 23, 37
ventricosa Blume — 23
- Chelonistele* Pfitzer — 17, 23, 24*, 25 map, 43, 47
amplissima (Ames & Schweinf.) Carr Ch1 —
 26*, fig. 10, plate 2d
apiculata (Lindley) Pfitzer Excl. — 23, 40
biflora (Par. & Rchb. f.) Pfitzer Excl. — 23, 40
brevilamellata (J.J. Smith) Carr Ch2 — 24, 26,
 28*, fig. 11
clemensii (Ames) Carr = N2 — 47, 49
crassifolia Carr = Ch10b — 39
cuneata (J.J. Smith) Carr = Ch10a — 38, 39
dentifera de Vogel Ch3 — 26, 29*, fig. 12
ingloria (J.J. Smith) Carr Ch4 — 18, 26, 30*,
 fig. 13, plate 3a
keithiana W.W. Smith = N2 — 40, 47, 49
kinabaluensis (Rolfe) de Vogel Ch5 — 26, 31*,
 fig. 14
kutaiensis (J.J. Smith) Carr = Ch10a — 38, 39
lamellulifera Carr Ch6 — 26, 32*, 47, fig. 15
lurida (L. Linden & Cogn.) Pfitzer Ch7 — 26,
 33*
 var. *grandiflora* de Vogel Ch7b — 34*, fig.
 16j–k, plate 3c
 var. *lurida* Ch7a — 34*, fig. 16a–i, plate 3b
perakensis (Rolfe) Ridley = Ch10a — 23, 38, 39,
 43
pinniloba (J.J. Smith) Carr = Ch10a — 38, 39
pusilla (Ridley) Ridley = Ch10a — 37, 39
ramentacea J.J. Wood Ch8 — 26, 35*, fig. 17
richardsii Carr Ch9 — 26, 35*, fig. 18
sulphurea (Blume) Pfitzer Ch10 — 24, 36*, 43
 var. *crassifolia* (Carr) de Vogel Ch10b — 18,
 26, 39*, fig. 19e–g, fig. 20e
 var. *sulphurea* Ch10a — 18, 26, 37*, fig.
 19a–d, fig. 20a–d, f, g, plate 3d,
 cover
tenuiflora (Ridley) Pfitzer Excl. — 40
unguiculata Carr Ch11 — 26, 39*, fig. 21
vermicularis (J.J. Smith) Kraenzlin Excl. — 40
- Chelonostele* auct. non Pfitzer: Ridley — 43, 44

- Coelogyne* Lindley – 19, 23, 24, 43, 47
 sect. *Chelonistele* J.J. Smith – 23, 24
 sect. *Longifoliae* Pfitzer – 43
 subgen. *Chelonistele* (Pfitzer) Butzin – 24
amplissima Ames & Schweinf. = Ch1 – 26, 28
 var. *schweinfurthiana* J.J. Smith = Ch1 – 26, 28
beyrodtiana Schltr. = Ch10a – 23, 38, 39
biflora Par. & Rchb. f. – 23
bilamellata Lindley – 47
brevilamellata J.J. Smith = Ch2 – 23, 28
crassifolia (Carr) Masamune = Ch10b – 39
croockewitii Teysm. & Binnend. = Ch10a – 23, 38, 39
 cuneata J.J. Smith = Ch10a – 38
 decipiens Sander = ?Ch10a – 38
 gibbosa (Blume) Rchb. f. – 23
 ingloria J.J. Smith = Ch4 – 30
 kutaiensis J.J. Smith = Ch10a – 38
 lamellulifera (Carr) Masamune = Ch6 – 32
 lurida L. Linden & Cogn. = Ch7 – 23, 34
 perakensis Rolfe = Ch10a – 23, 38
 phaiolestele = G2 – 43, 45
 pinniloba J.J. Smith = Ch10a – 38
 pusilla Ridley = Ch10a – 23, 37
 richardsii (Carr) Masamune = Ch9 – 35
 ridleyana Schltr. = G2 – 43, 45
 sarawakensis Schltr. = Ch7a – 34
 sulphurea (Blume) Rchb. f. = Ch10a – 23, 37
 tenuiflora Ridley – 23
 unguiculata (Carr) Masamune = Ch11 – 39
 ventricosa (Blume) Rchb. f. – 23
Cymbidiaceae – 1
Cyrtopodiaceae – 1, 2

Dendrochilum Blume – 19

Entomophobia de Vogel – 17, 41*
 kinabaluensis (Ames) de Vogel E1 – 41*,
 fig. 22
Epidendreae – 1
Epidendroideae – 1

Geesinkorchis de Vogel – 17, 43*
 alaticcalosa de Vogel G1 – 43, 44*, fig. 23,
 plate 4a, 4b
 phaiolestele (Ridley) de Vogel G2 – 18, 40, 43,
 44, 45*, fig. 24, plate 4c

Nabalua Ames – 17, 23, 43, 47*
 angustifolia de Vogel N1 – 47, 48*, 49, fig. 25,
 plate 4d
 clemensii Ames N2 – 40, 47, 48, 49*, fig. 26
 clemensii auct. non Ames: Ames – 48
 exaltata de Vogel N3 – 48, 50*, fig. 27

Panisea Lindley – 23
 apiculata Lindley – 23
 uniflora (Lindley) Lindley – 40
Pholidota W. J. Hooker – 17, 23, 41, 43, 47
 gibbosa (Blume) de Vriese – 43
 imbricata W. J. Hooker – 43
 kinabaluensis Ames = E1 – 41
 nervosa (Blume) Rchb. f. – 41, 43, 47
 pusilla (Ridley) Kraenzlin = Ch10a – 38
 sigmatochilus (Rolfe) J.J. Smith = Ch5 – 31
 sulcata J.J. Smith – 43
 triloba J.J. Smith = G2 – 45
 ventricosa (Blume) Rchb. f. – 43
Pleione D. Don – 23
 croockewitii (Teyssm. & Binnend.) O. Kuntze =
 Ch10a – 23, 38
 sulphurea (Blume) O. Kuntze = Ch10a – 23, 37

Sigmatochilus Rolfe – 24
 kinabaluensis Rolfe = Ch5 – 24, 31
Spathoglottis ?*trivalvis* Lindley = A5a – 11

Thecopus – 1, 2
Thecostele – 1, 2
 alata (Roxb.) Par. & Rchb. f. – 16
Thecostelinae – 1, 2

Vandae – 1
Vandoideae – 1

LEGENDS OF THE FIGURES

For Fig. 1, see page 11.

Fig. 2. *Acriopsis carrii* Holttum. a. Habit; b. flower; c. flower analysis; d. lip and column (a. Carr 135; b–d. SF 10254).

Fig. 3. *Acriopsis densiflora* Lindley var. *densiflora*. a. Habit; b. flower; c. flower analysis; d. lip and column; e. lip. – *Acriopsis densiflora* Lindley var. *borneensis* (Ridley) Minderhoud & de Vogel. f. Habit; g. lip and column (a. van Niel 3718; b–d. Herb. Paris s.n.; e. van der Est s.n.; f–g. Collette 29/79).

Fig. 4. *Acriopsis gracilis* Minderhoud & de Vogel. a. Flower; b. flower analysis; c. lip and column (a–d. Giles 620).

Fig. 5. *Acriopsis indica* Wight. a. Habit; b. flower analysis; c. flower; d. lip and column (a. Weber s.n.; b–d. Seidenfaden & Smitinand 8345).

Fig. 6. *Acriopsis javanica* Reinw. ex Blume var. *auriculata* Minderhoud & de Vogel. a. Habit; b. flower; c. flower analysis; d. lip and column; e. cross-section through lip and column (a–d. Leiden, cult. Hort. (Roos & Franken) 20788; e. Mason 546).

Fig. 7. *Acriopsis ridleyi* Hooker f. a. Habit; b. flower; c. flower analysis; d. lip and column; e. fruit (a. Burkill 3331; b–e. Bridson 353).

Fig. 8. *Bracisepalum densiflorum* de Vogel. a. Habit; b. bract; c. flower; d. flower analysis; e. lip and column; f. column (a–f. Leiden, cult. Hort. (de Vogel) 20313).

Fig. 9. *Bracisepalum selebicum* J.J. Smith. a. Habit; b. bract; c. flower; d. flower analysis; e. lip and column; f. column (a–f. Leiden, cult. Hort. (de Vogel) 20446).

Fig. 10. *Chelonistele amplissima* (Ames & Schweinf.) Carr. a. Habit; b. flower; c. flower analysis; d. column; e. outline cross-section through ovary (a. & c–e. Nootboom & Chai 2247; b. Singapore, cult. Hort. 11.111.66 (Kew alc. 31926)).

Fig. 11. *Chelonistele breviamellata* (J.J. Smith) Carr. a. Habit; b. flower analysis; c. backside of the lip; d. column (a–d. Endert 4427).

Fig. 12. *Chelonistele dentifera* de Vogel. a. Habit; b. flower analysis; c. lip and column; d. column; e. lip (a. & c–e. S 21954; b. Burt B. 11375).

Fig. 13. *Chelonistele ingloria* (J.J. Smith) Carr. a. Habit; b. flower; c. flower analysis; d. column (a. & c–d. Endert 3972; b. Leiden, cult. Hort. (Burt & Martin 5215) 22064).

Fig. 14. *Chelonistele kinabaluensis* (Rolfe) de Vogel. a. Habit; b. flower; c. flower analysis; d. lip and column; e. column; f. column, the lobes spread (a–d. Clemens 51192; e–f. Clemens 50658).

Fig. 15. *Chelonistele lamellulifera* Carr. a. Habit; b. flower; c. flower analysis; d. lip; e. column, left lobes spread (a. & d. Syng S. 521; b–c. & e. Burt & Martin B. 5405).

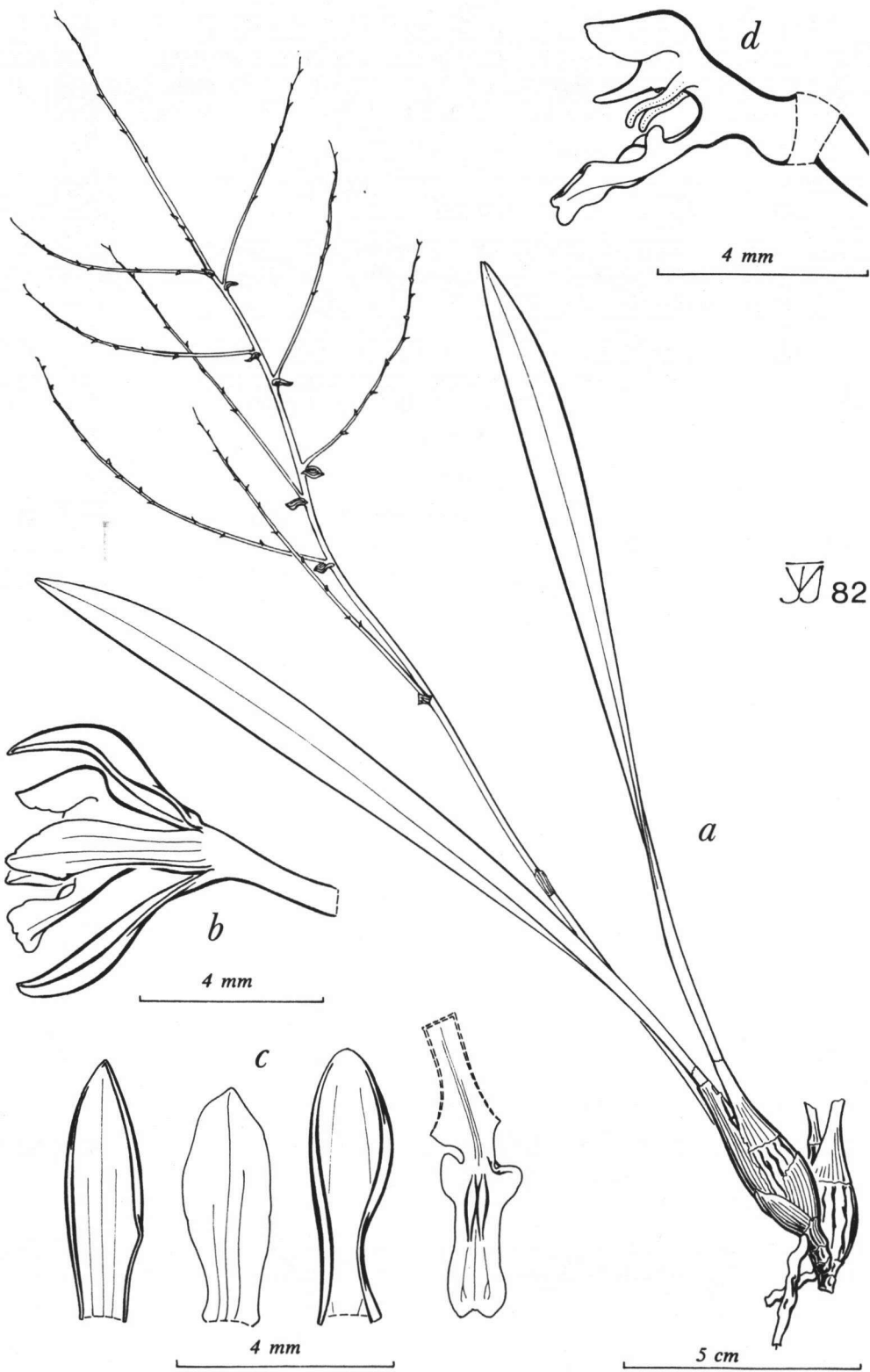


Fig. 2. Holttum.

Fig. 16. *Chelonistele lurida* (L. Linden & Cogn.) Pfitzer var. *lurida*. a. Habit; b. flower; c. flower analysis; d. column, lobes spread; e. anther; f. pollinia; g. flower analysis; h. lip and column; i. column, lobes spread. — *Chelonistele lurida* var. *grandiflora* de Vogel. j. Flower analysis; k. column, lobes spread (a. Clemens s.n., 7-I-1932; b–f. SAN (Sinanggul) 38318; g–i. Bruxelles, cult. Hort. (Herb. Cogniaux); j–k. Burt & Woods B. 2169).

Fig. 17. *Chelonistele ramentacea* J.J. Wood. a. Habit; b. flower analysis; c. column (a–c. Burt & Woods B. 2192).

Fig. 18. *Chelonistele richardsii* Carr. a. Habit; b. flower; c. flower analysis; d. lip and column; e. column, lobes spread (a–e. Richards S. 59).

Fig. 19. *Chelonistele sulphurea* (Blume) Pfitzer var. *sulphurea*. a. Habit; b. flower; c. flower analysis; d. lip and column. — *Chelonistele sulphurea* var. *crassifolia* (Carr) de Vogel. e. Habit; f. flower; g. flower analysis (a. & c. Blume s.n., H.L.B. 902,322-1084; b. & d. Leiden, cult. Hort. (Roos & Franken) 21133; e–g. Clemens 27169).

Fig. 20. Variation in shape of lip and column, in different specimens of *Chelonistele sulphurea* (Blume) Pfitzer var. *sulphurea*. a. Leiden, cult. Hort. (Roos & Franken) 21133, Java ('*sulphurea*'); b. Kew, cult. Hort. s.n. (IX-1904), Malay Peninsula ('*pusilla*'); c. Bogor, cult. Hort. (Kuyper) 129; d. Endert 4524, Borneo ('*pinniloba*', type); f. Endert 4429, Borneo ('*kutaiensis*', type); g. Endert 3879, Borneo ('*cuneata*', type). — *Chelonistele sulphurea* var. *crassifolia* (Carr) de Vogel. e. Clemens 27169, Borneo ('*crassifolia*', type).

Fig. 21. *Chelonistele unguiculata* (Carr) Masamune. a. Habit; b. bract; c. flower; d. flower analysis; e. lip and column; f. base of lip; g. column, lobes spread (a–g. Synge S. 399).

Fig. 22. *Entomophobia kinabaluensis* (Ames) de Vogel. a. Habit; b. infructescence; c. bract; d. flower; e. flower analysis; f. lip from above; g. column; h. lip and column; i. lip and column, part of the lip removed to show the callus; j. anther; k. pollinia (a–e. Clemens 30607; f–k. Geesink 9039).

Fig. 23. *Geesinkorchis alaticallosa* de Vogel. a. Habit; b. bract; c. & d. flower; e. flower analysis; f. lip and column; g. detail of backside of lip; h. column; i. anther; j. pollinarium, two pollinia removed; k. seed (a–k. Geesink 8965).

Fig. 24. *Geesinkorchis phaiostele* (Ridley) de Vogel. a. Habit; b. bract; c. & d. flower; e. fruit; f. flower analysis; g. lip and column; h. column; i. anther; j. pollinarium, two pollinia removed (a. Hewitt s.n., Mt Poe; b. Clemens 20398; c–j. Leiden, cult. Hort. (Burt & Woods B. 2667) 22090).

Fig. 25. *Nabaluia angustifolia* de Vogel. a. Habit; b. flower; c. flower analysis; d. lip and column; e. & g. detail of backside of lip; f. & h. column (a–d. & g–h. Clemens 27159; e–f. Fuchs & Collette 21381).

Fig. 26. *Nabaluia clemensii* Ames. a. Habit; b. flower analysis; c. lip and column; d. detail of backside of lip; e. column (a–e. Moulton 103).

Fig. 27. *Nabaluia exaltata* de Vogel. a. Habit, detached young shoot and inflorescence; b. bract; c. flower; d. flower analysis; e. lip and column; f. detail of backside of lip; g. column (a–g. Burt & Martin B. 5259).

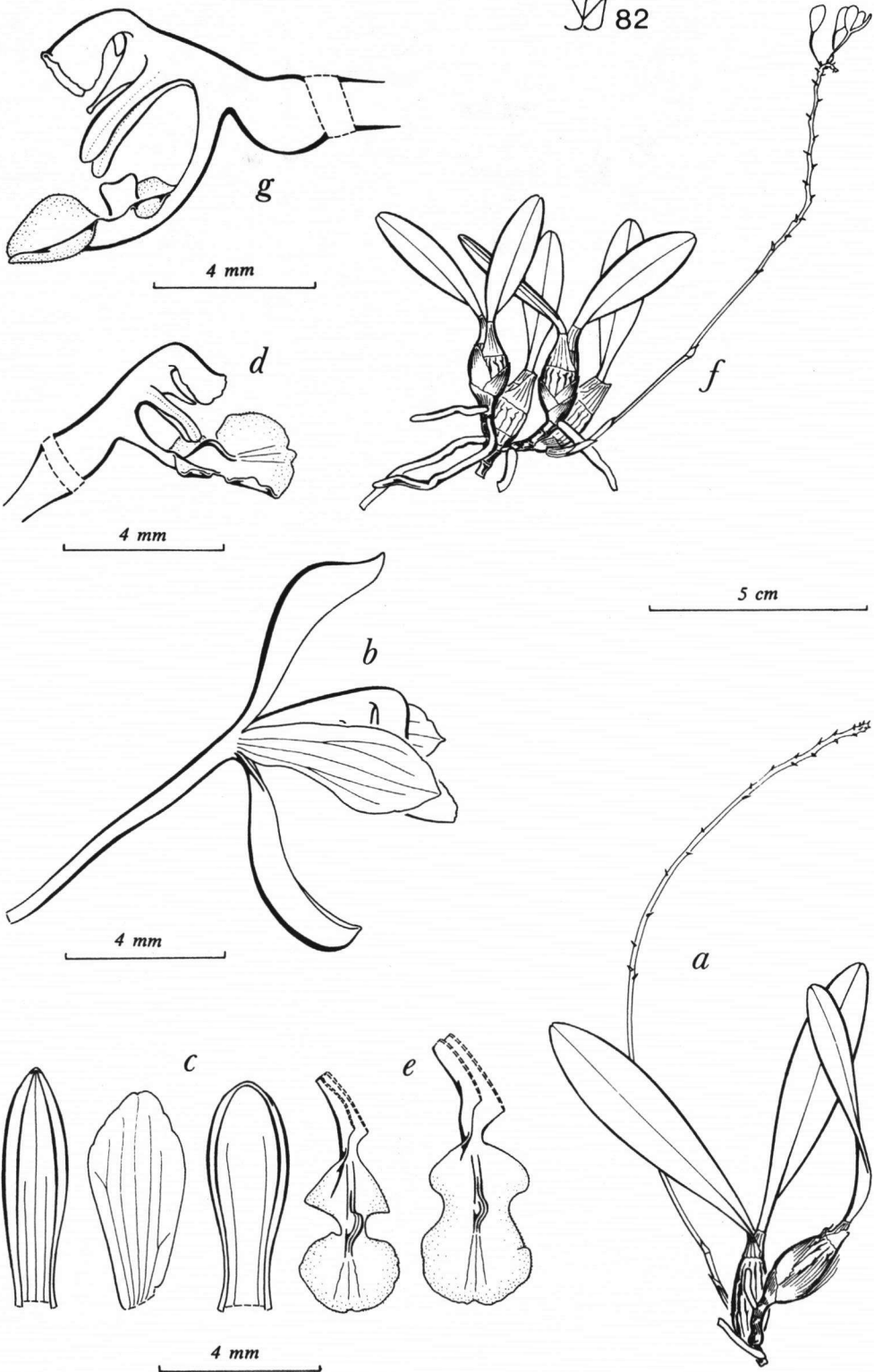


Fig. 3. Lindley var. & var. (Ridley) Minderhoud & de Vogel.

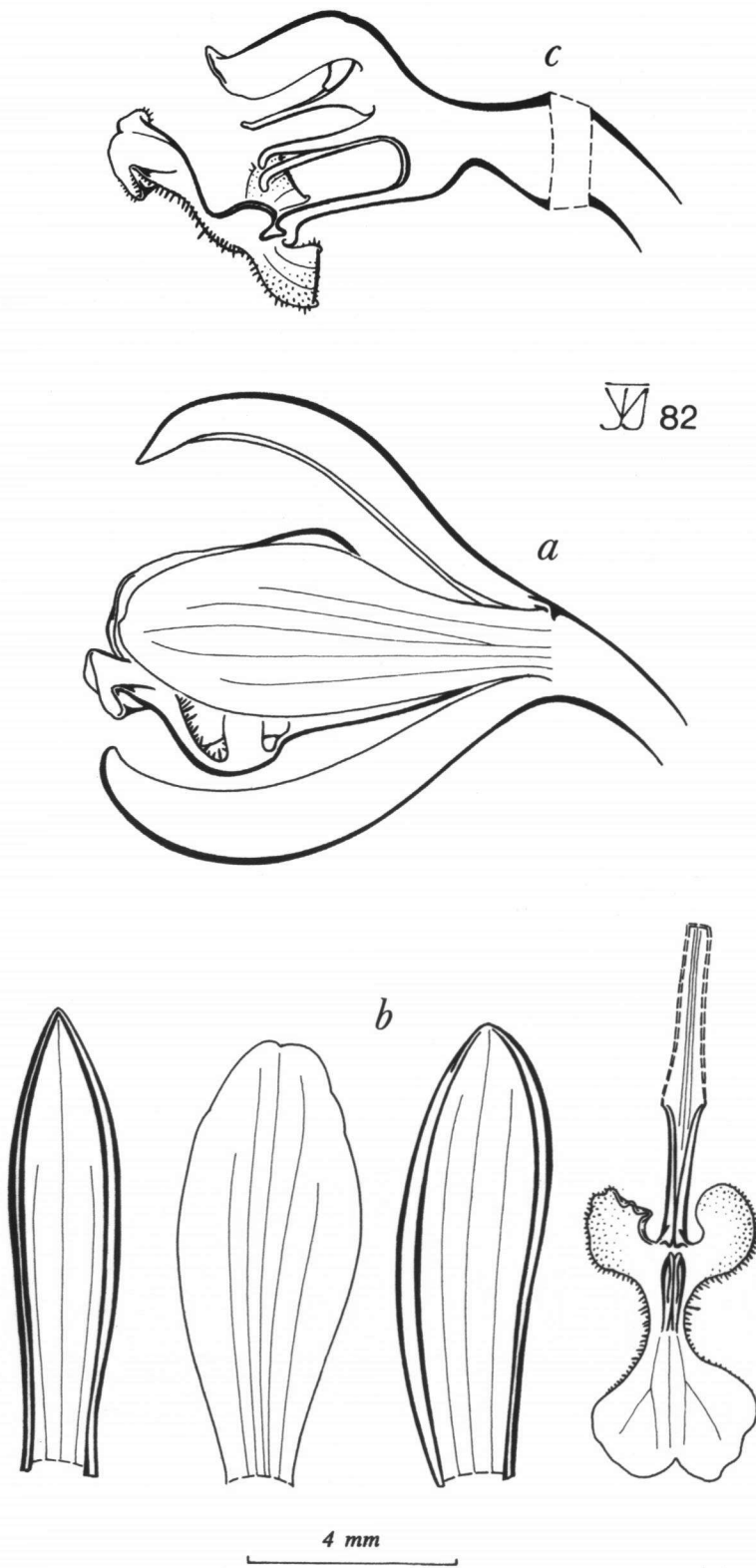


Fig. 4. Minderhoud & de Vogel.

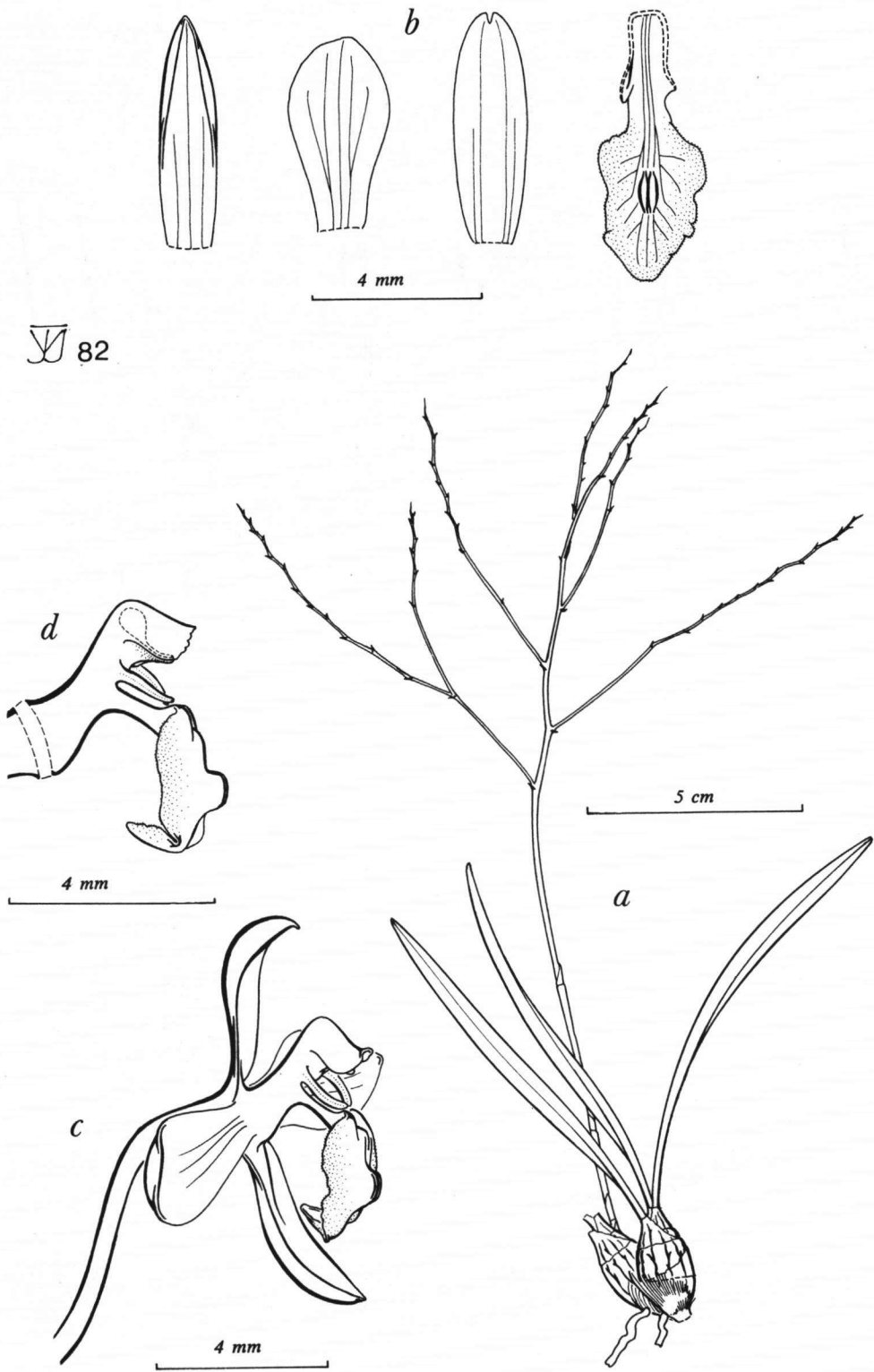


Fig. 5. Wight.

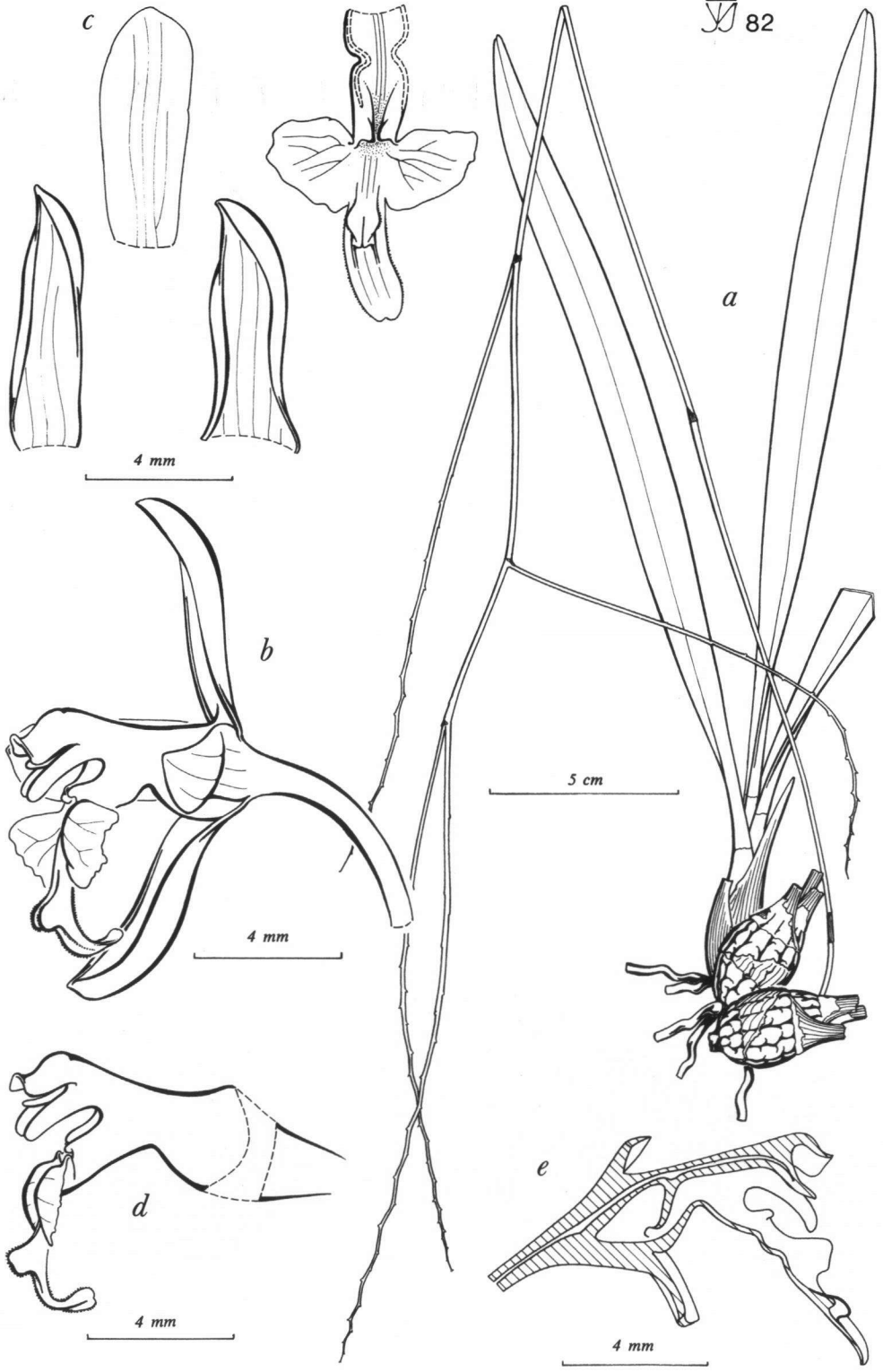


Fig. 6. Reinw. ex Blume var. Minderhoud & de Vogel.



Fig. 7. Hooker f.

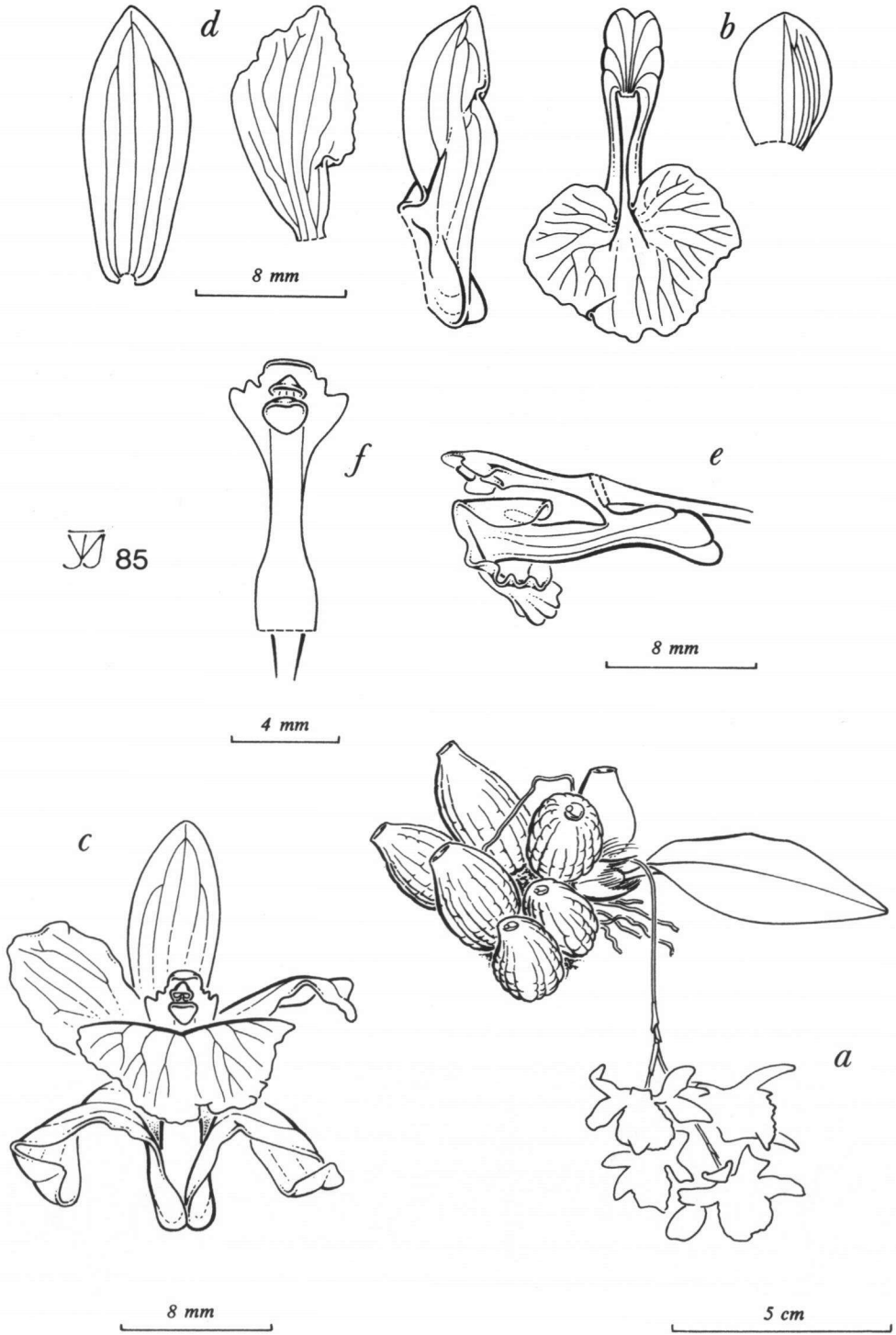


Fig. 8.

de Vogel.

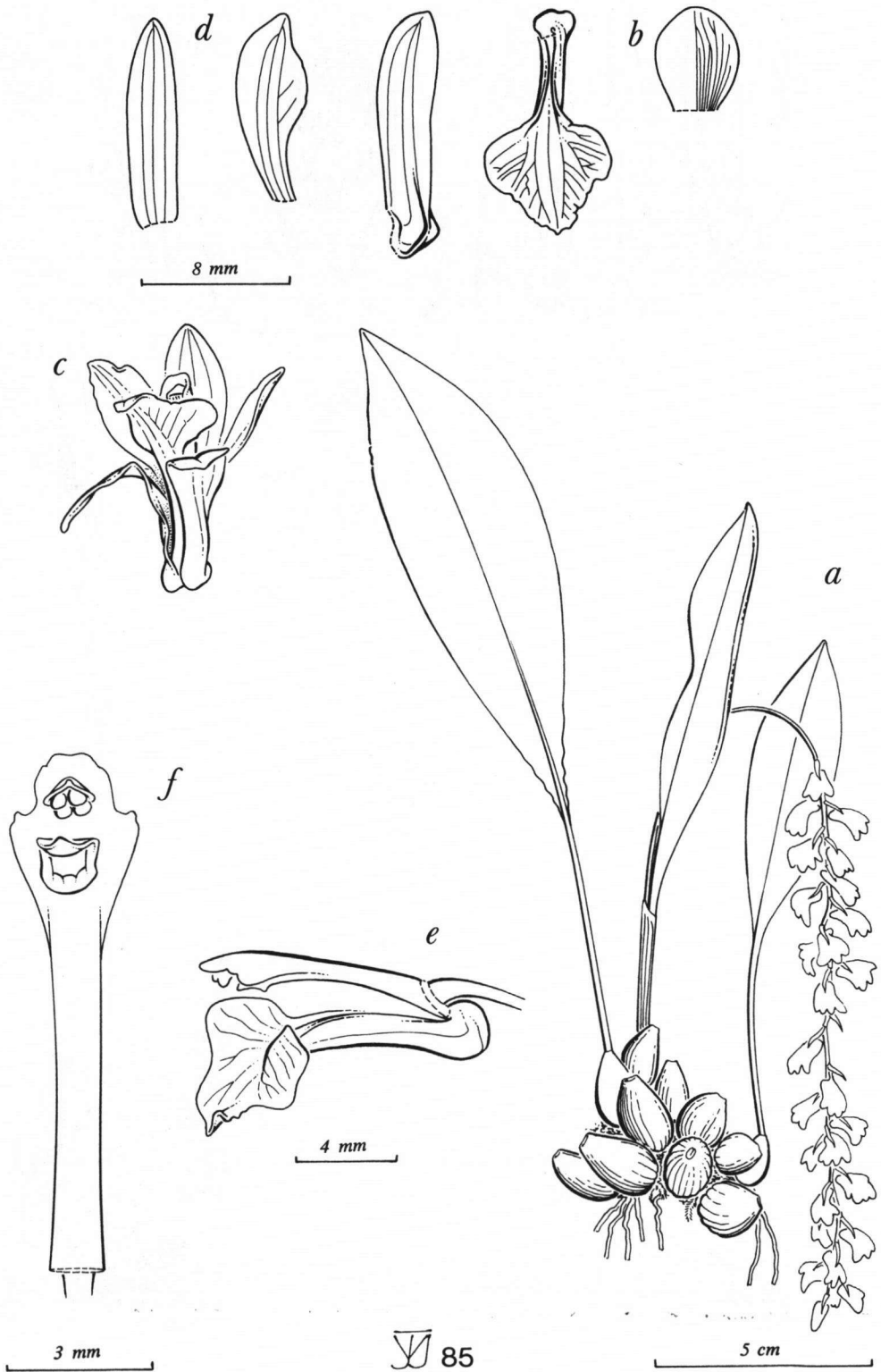


Fig. 9.

J.J. Smith.

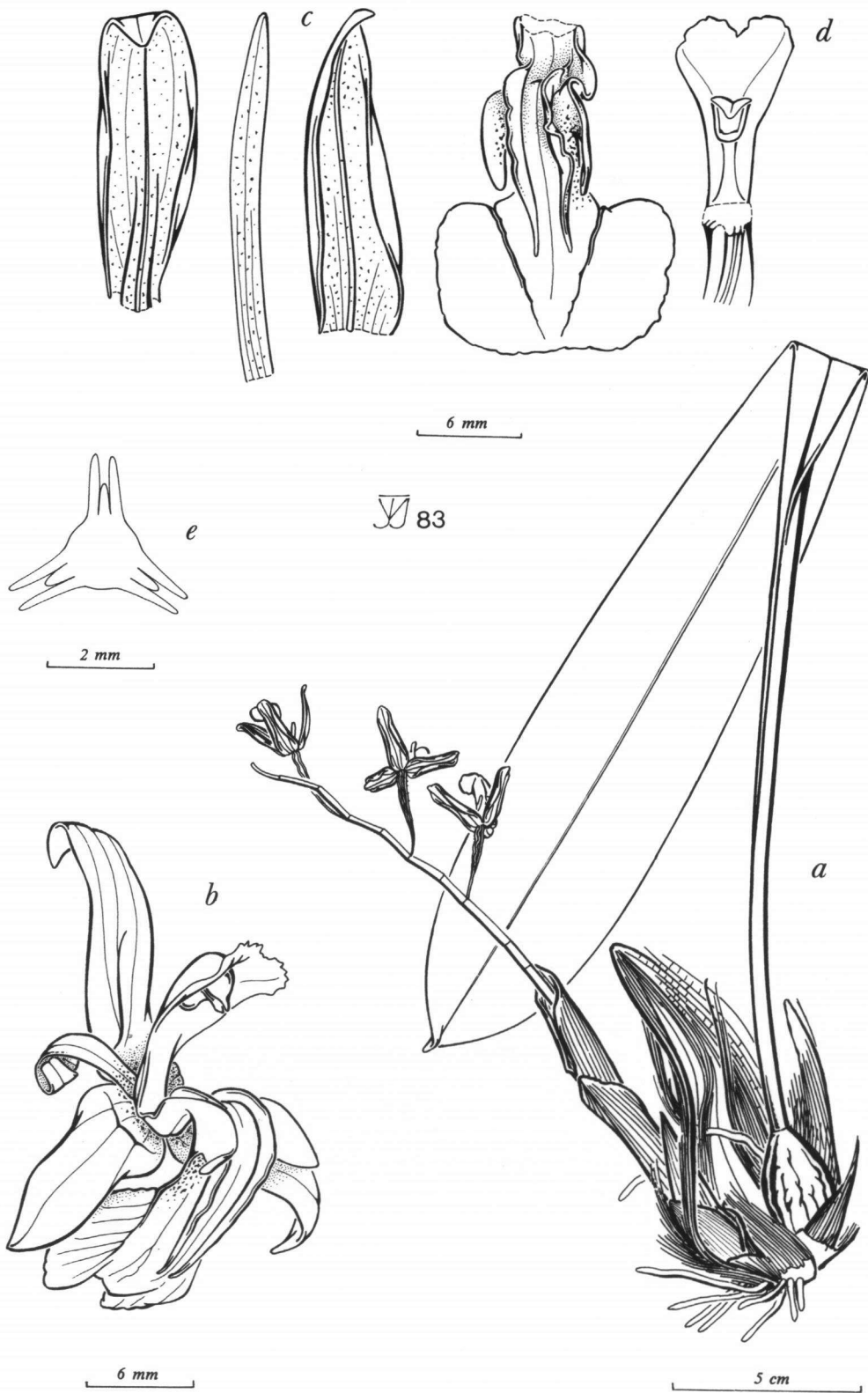


Fig. 10.

(Ames & Schweinf.) Carr.

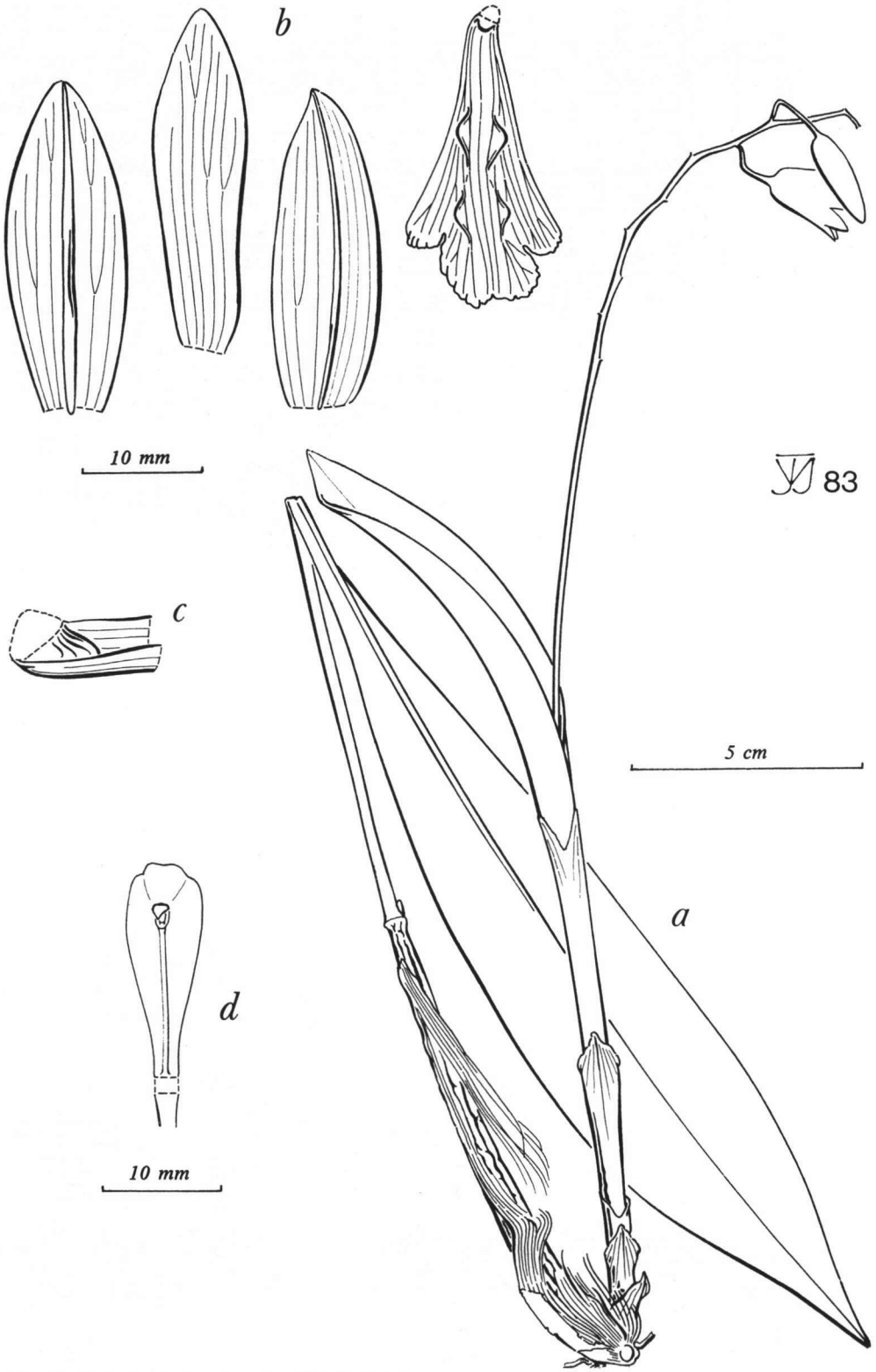


Fig. 11.

(J.J. Smith) Carr.

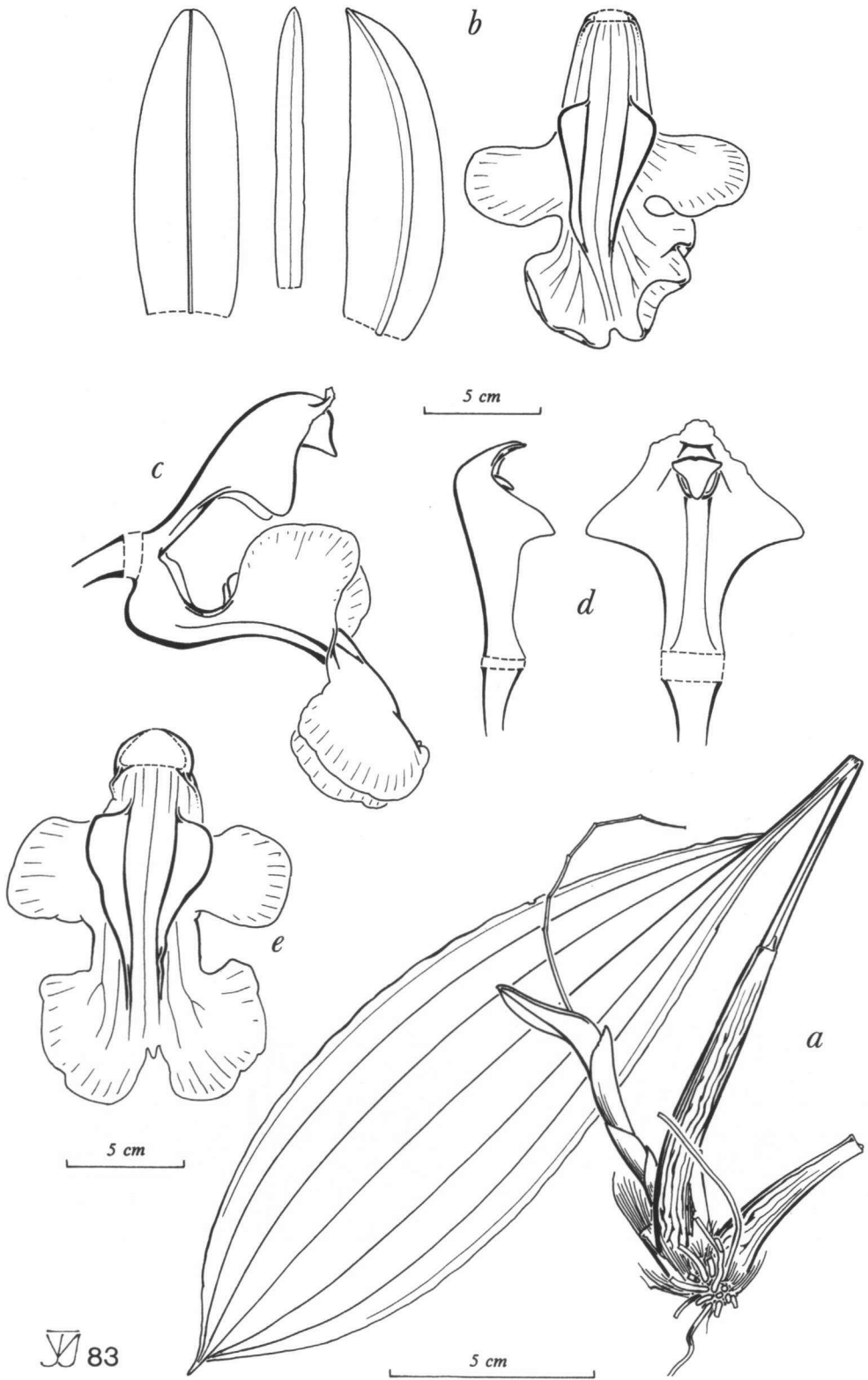


Fig. 12.

de Vogel.

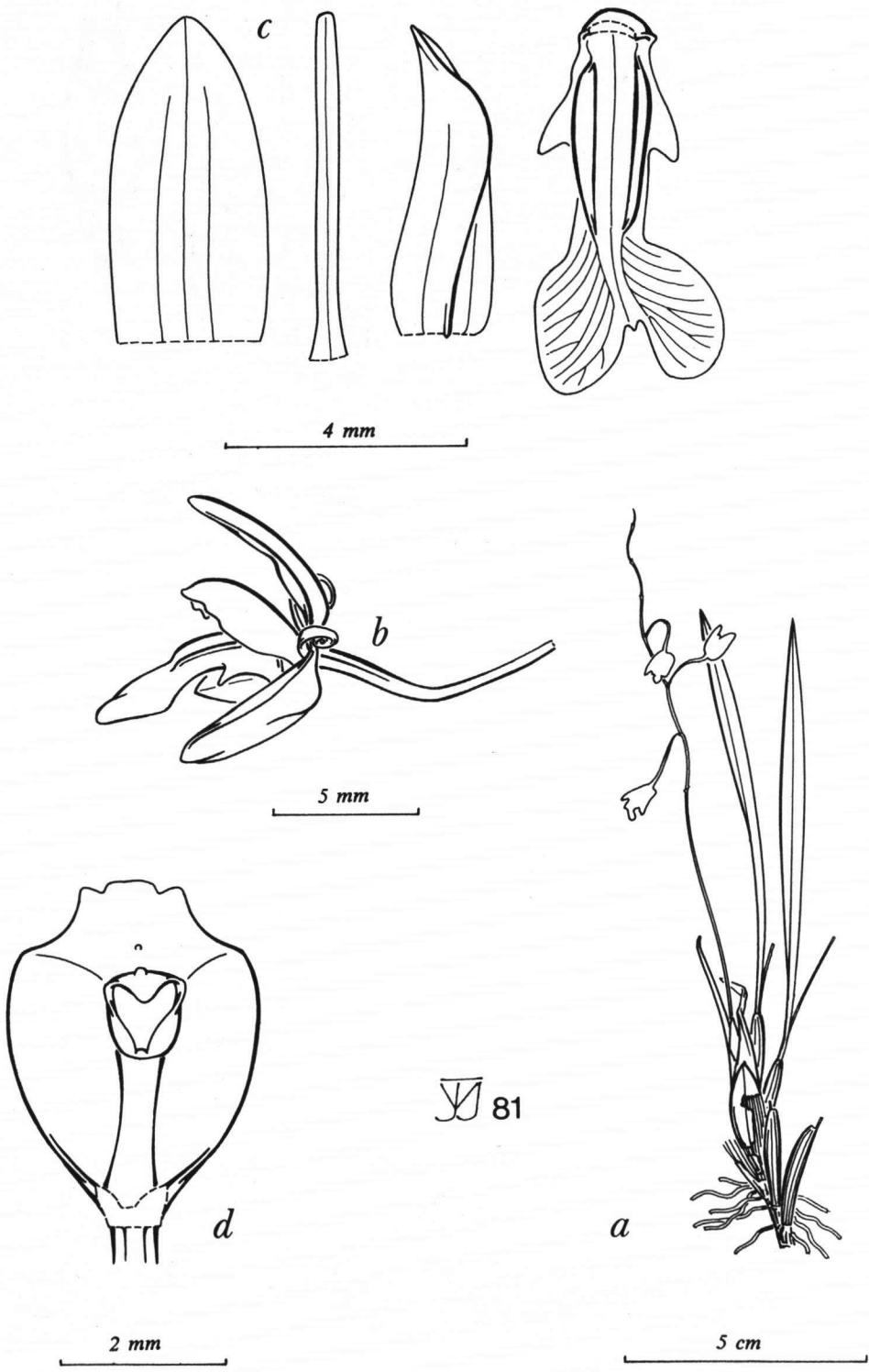


Fig. 13. (J.J. Smith) Carr.

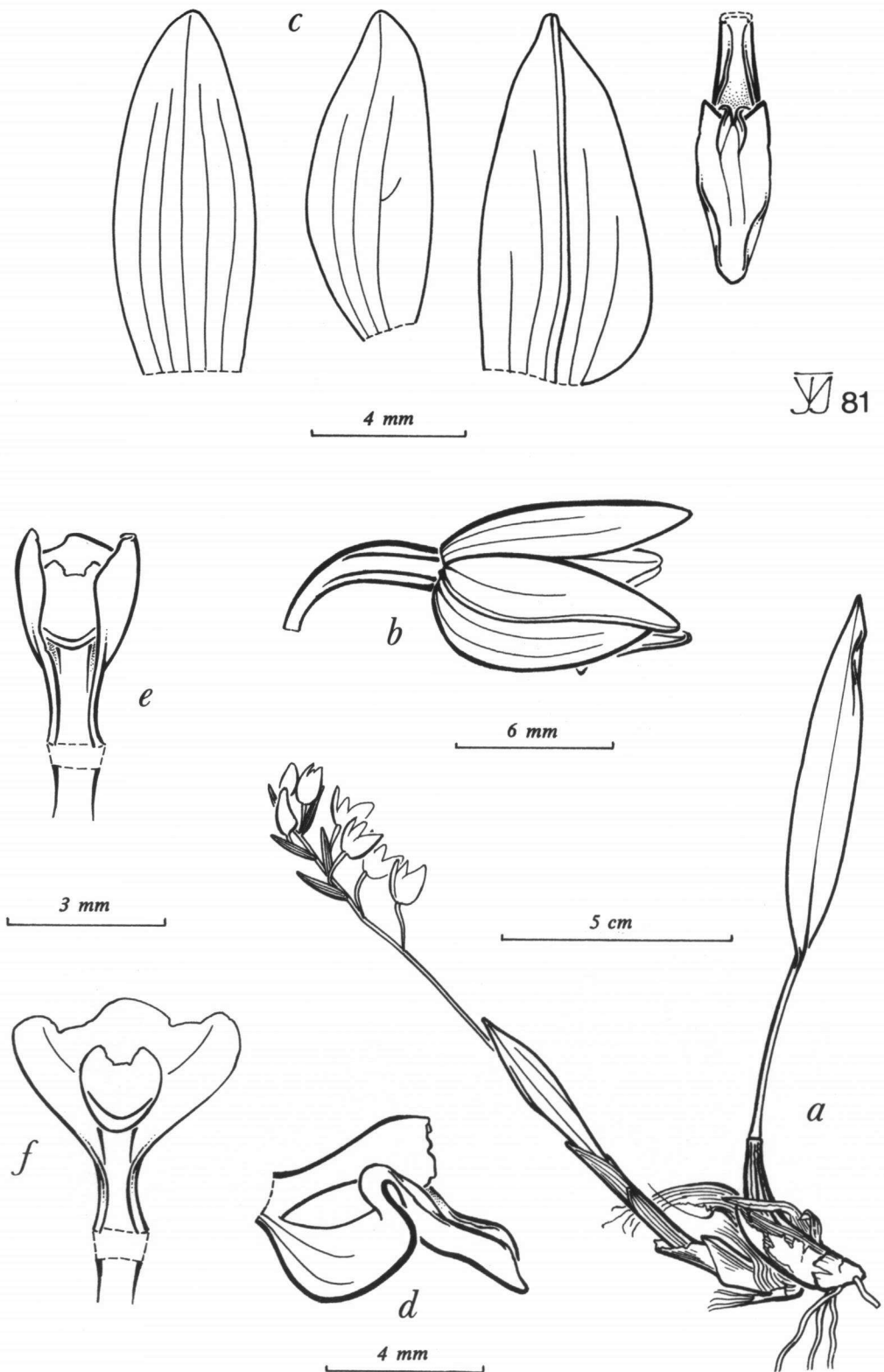


Fig. 14.

(Rolfe) de Vogel.

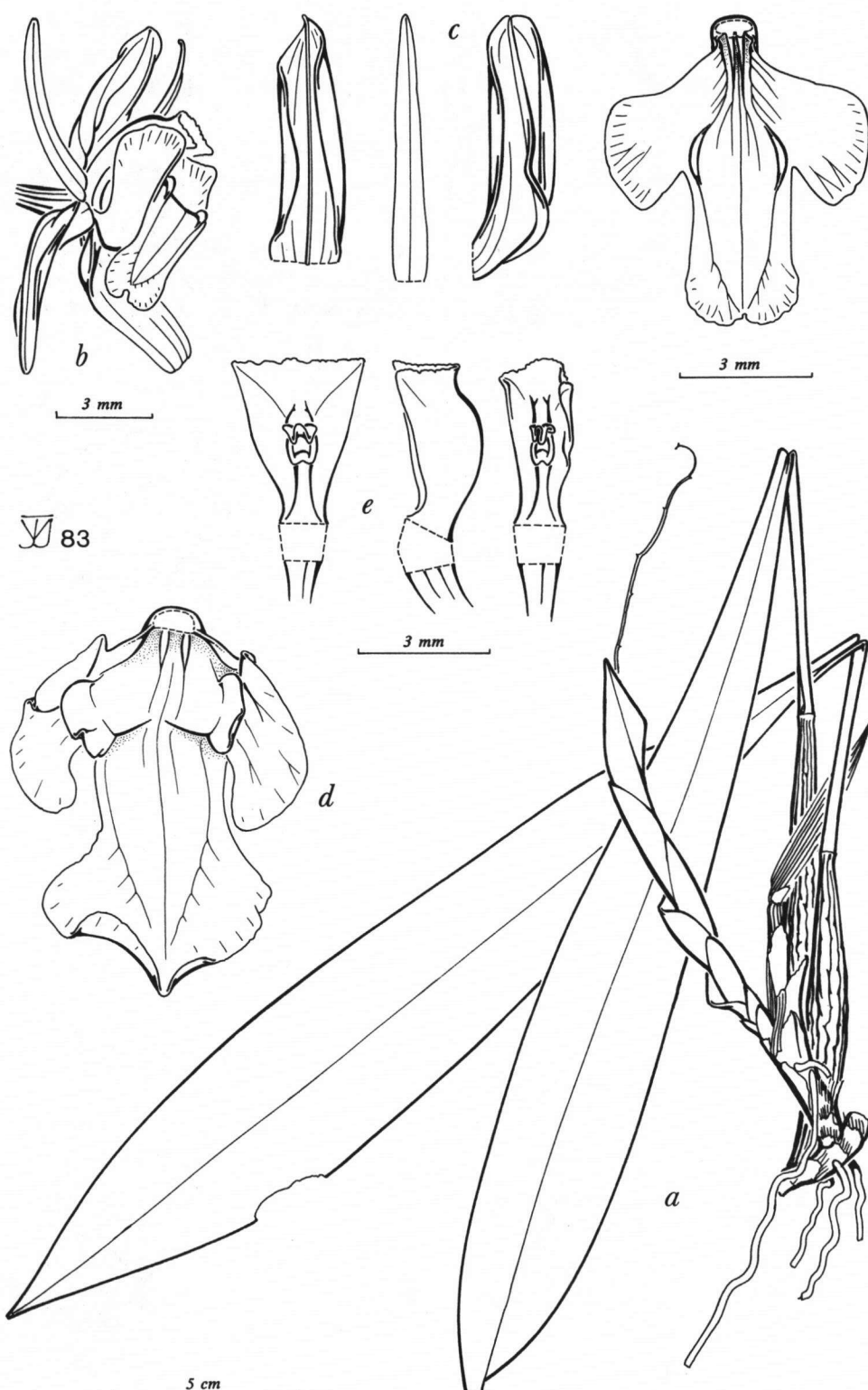


Fig. 15. Carr.

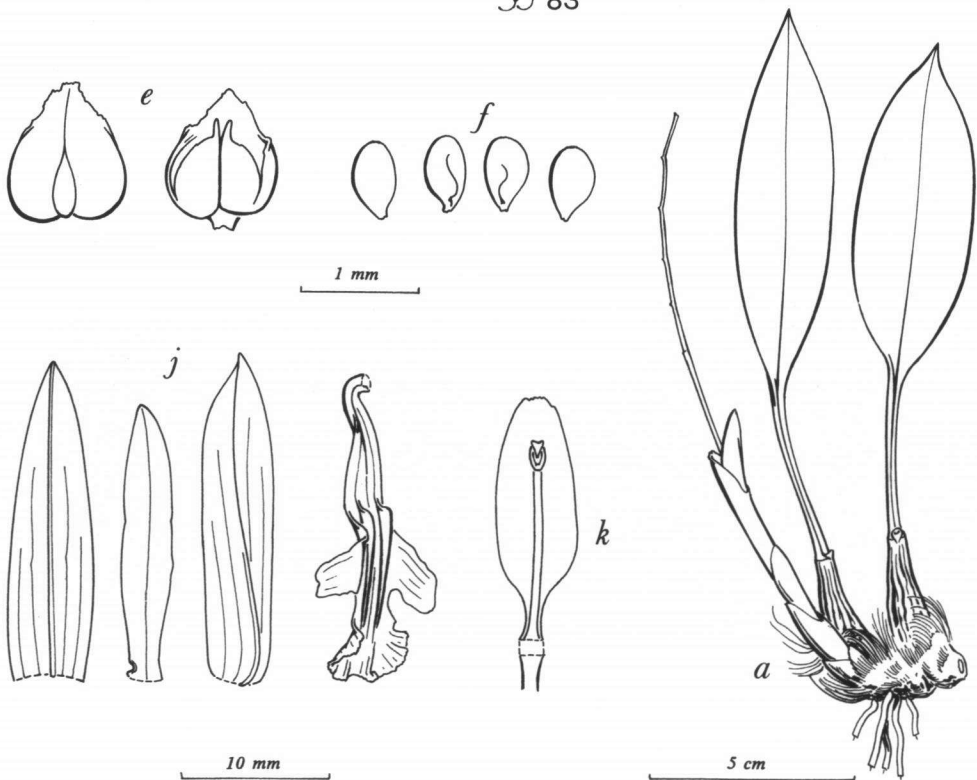
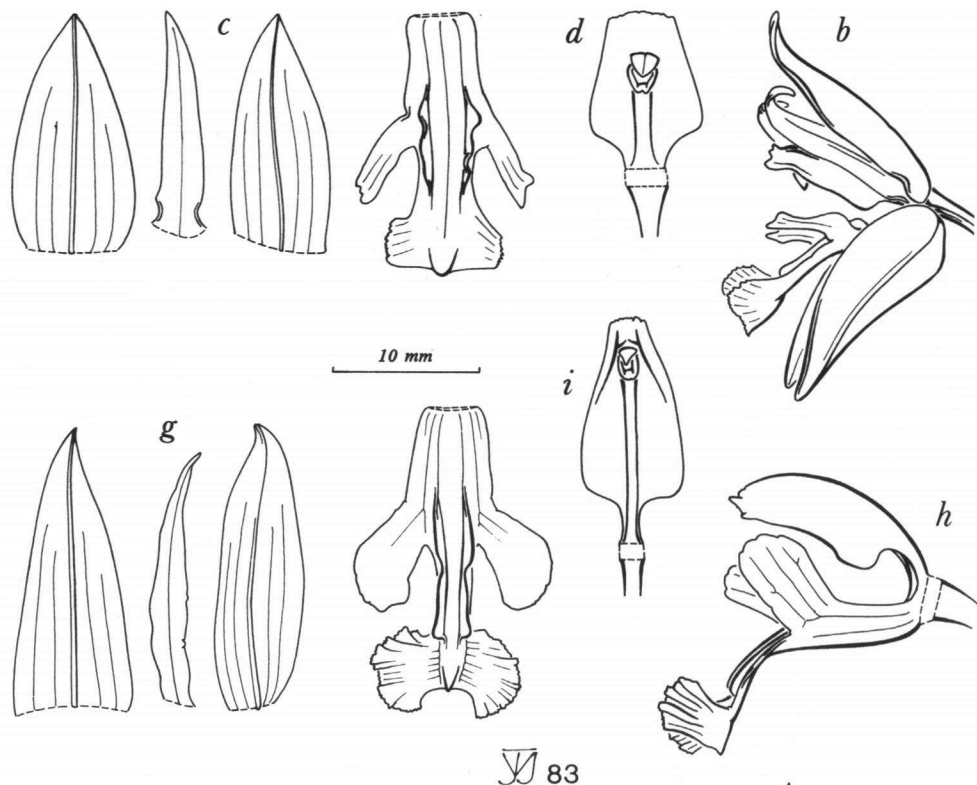


Fig. 16. (L. Linden & Cogn.) Pfitzer var. & var. de Vogel.

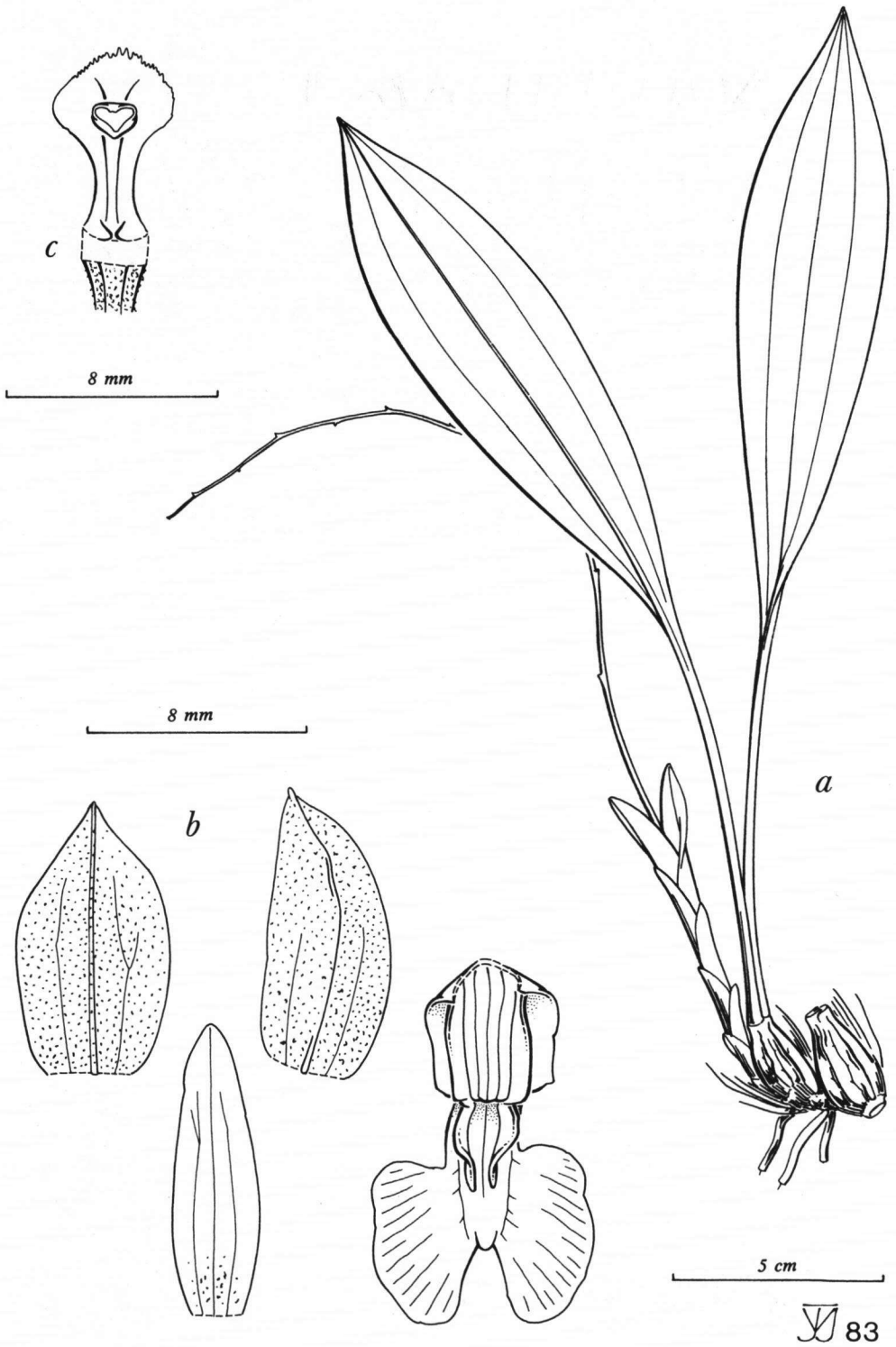


Fig. 17.

J. J. Wood.

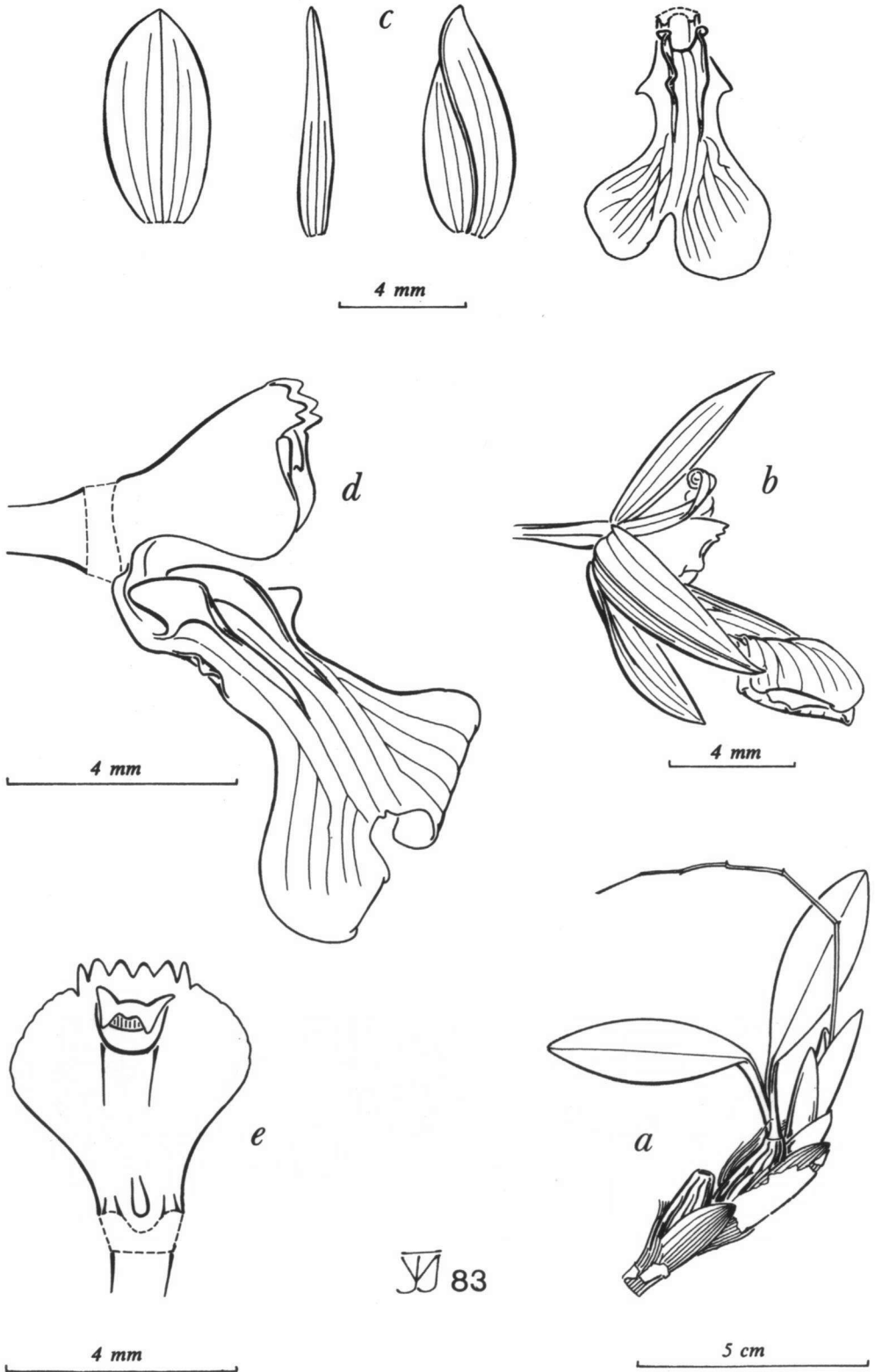


Fig. 18.

Carr.



Fig. 19. (Blume) Pfitzer var. & var. (Carr) de Vogel.

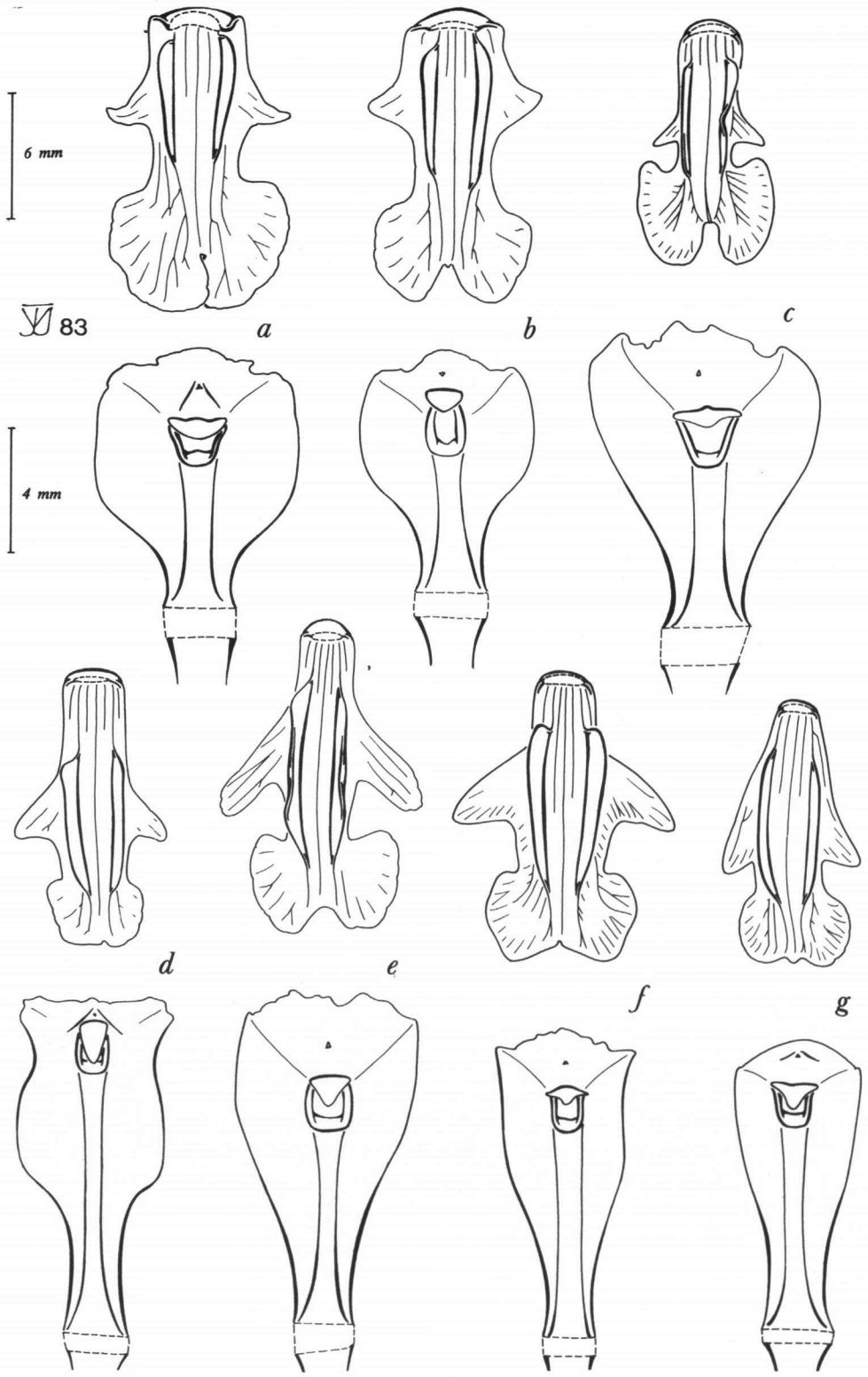


Fig. 20. Variation in shape of lip and column, in

& var.

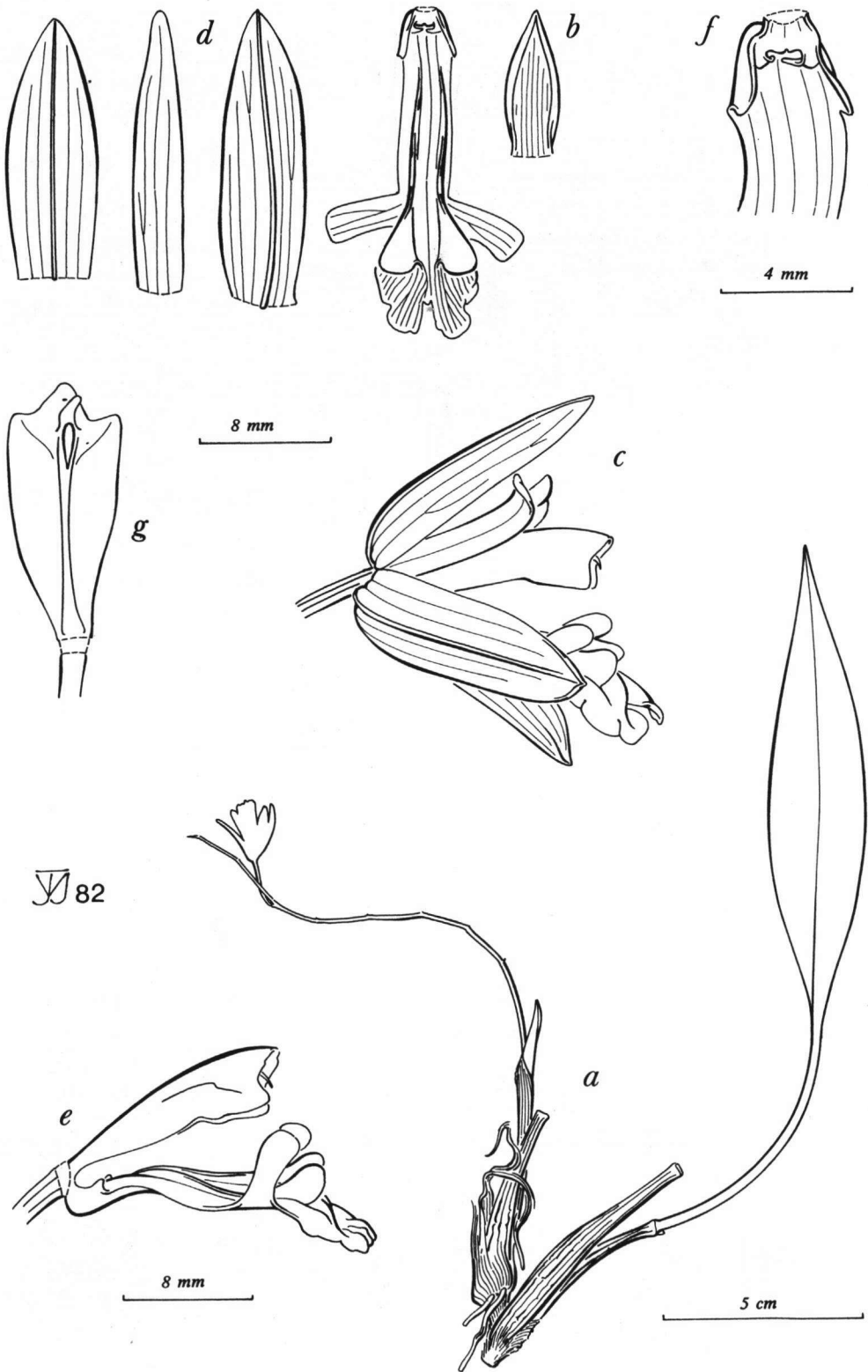


Fig. 21.

(Carr) Masamune.

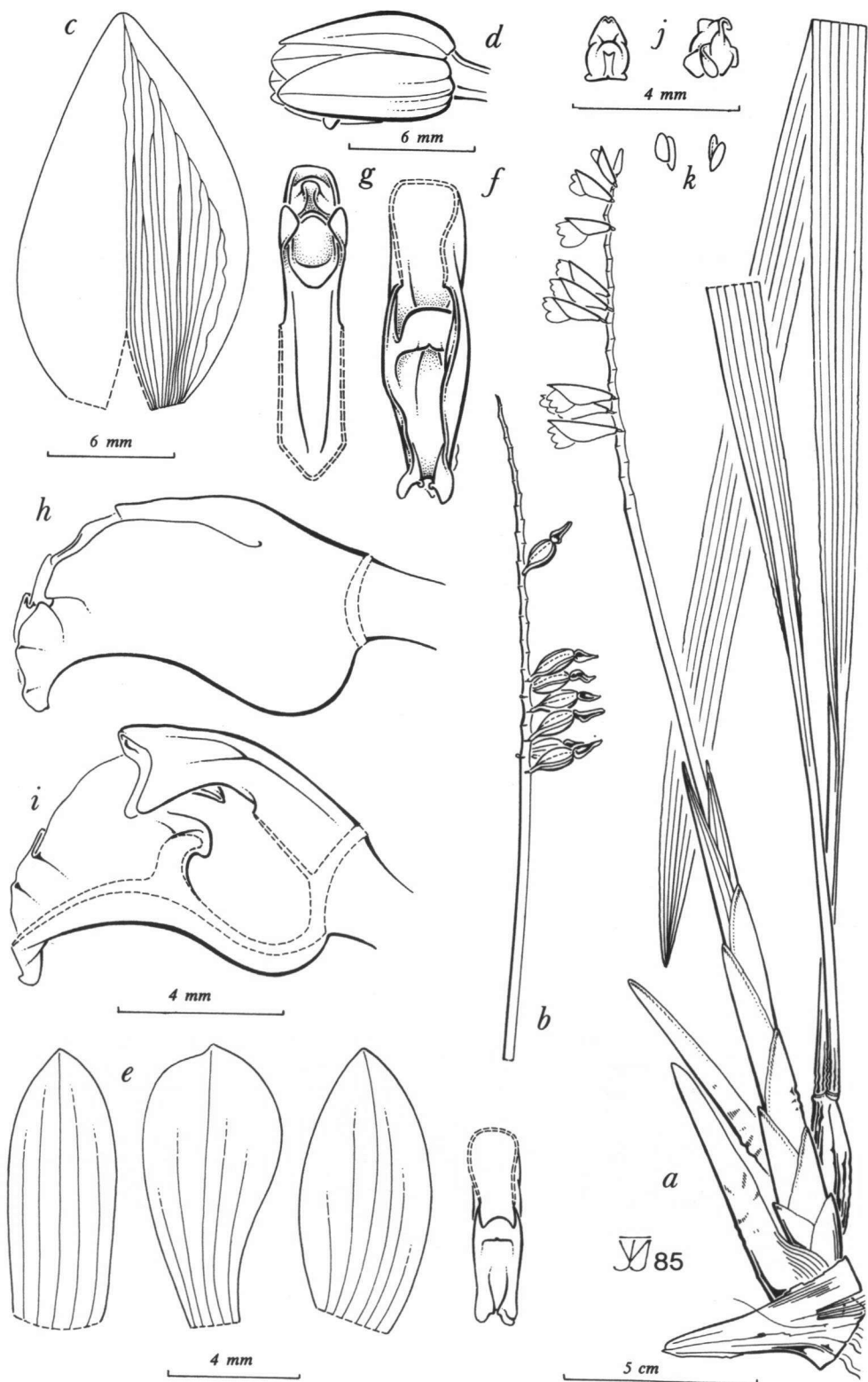


Fig. 22. (Ames) de Vogel.

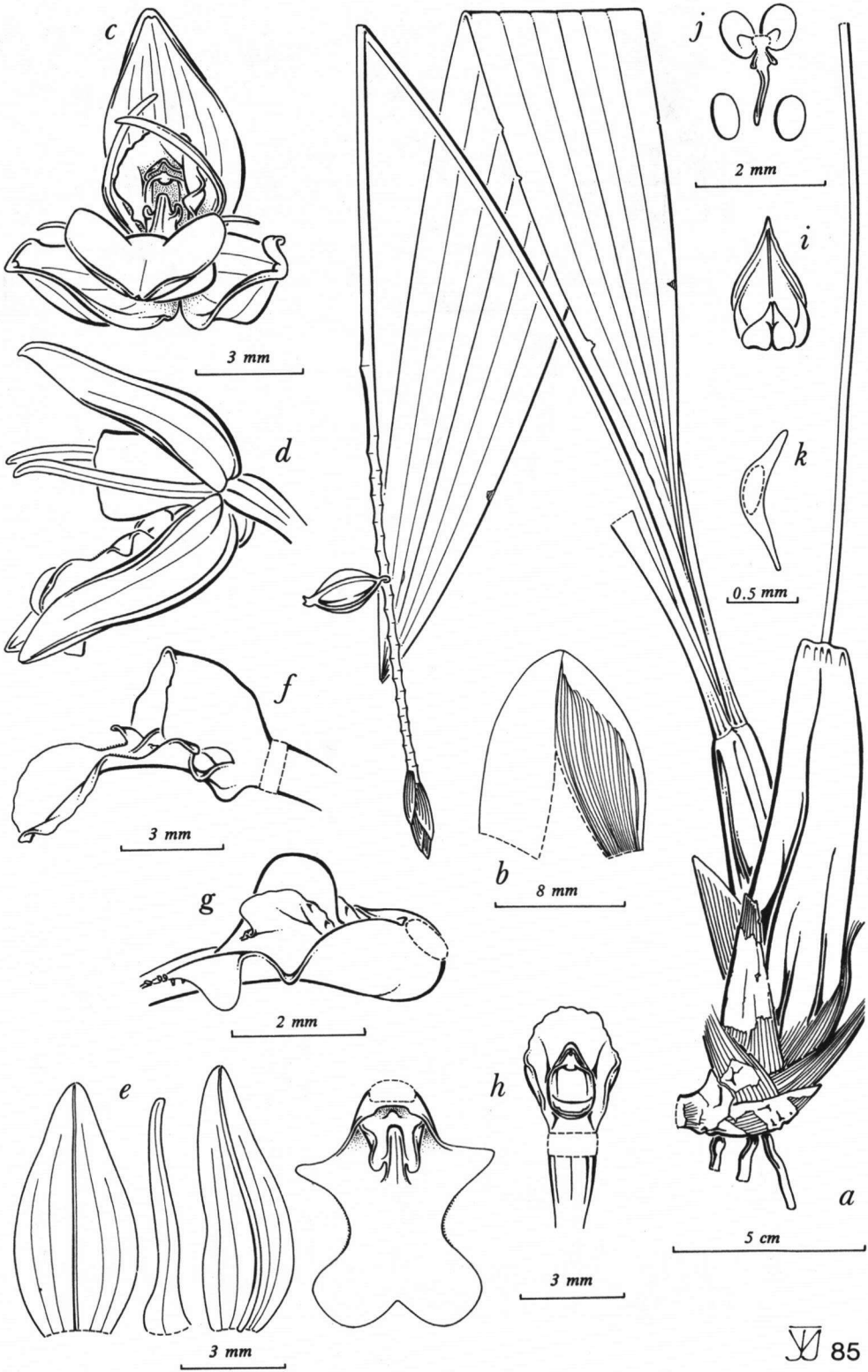


Fig. 23.

de Vogel.

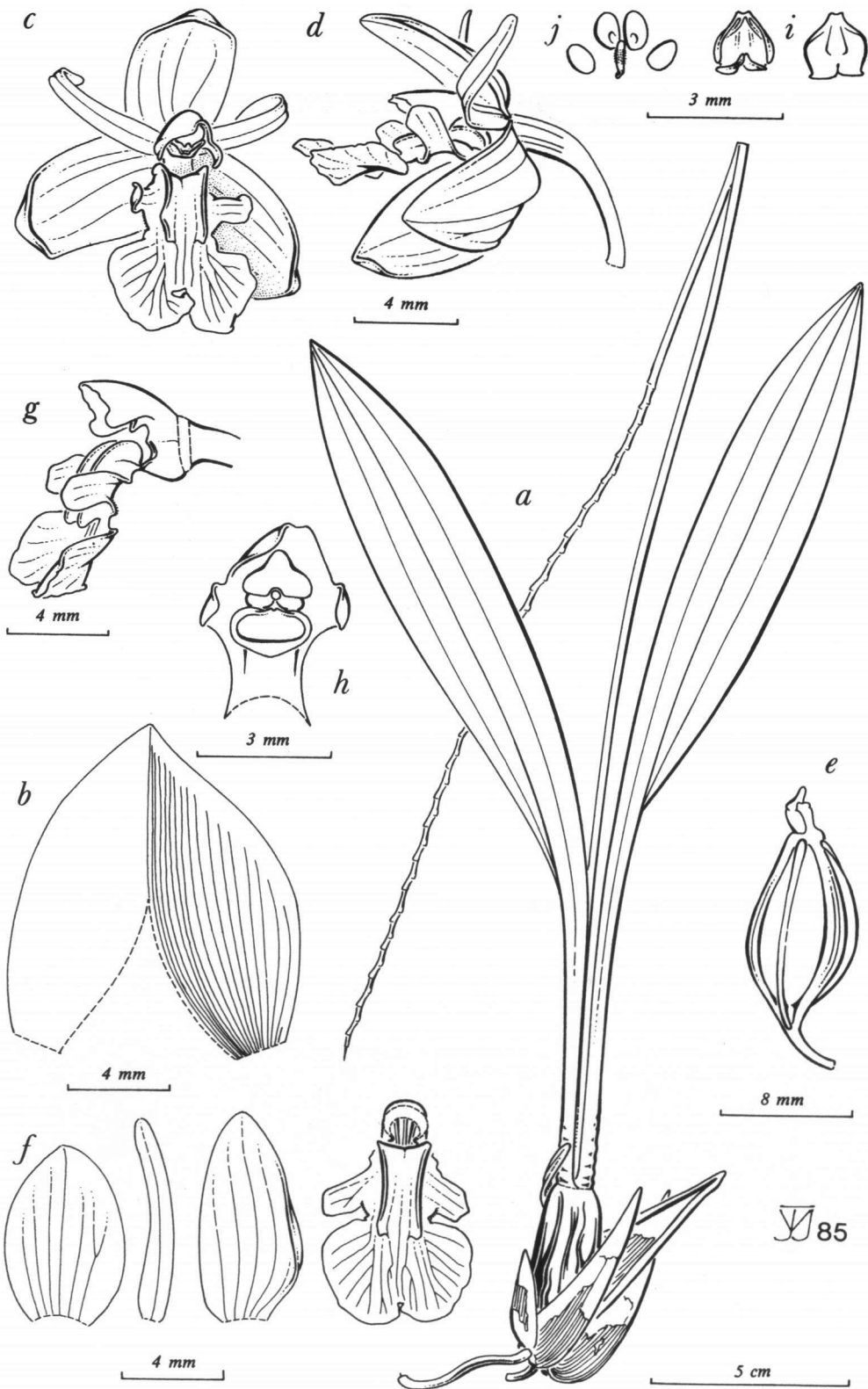


Fig. 24.

(Ridley) de Vogel.

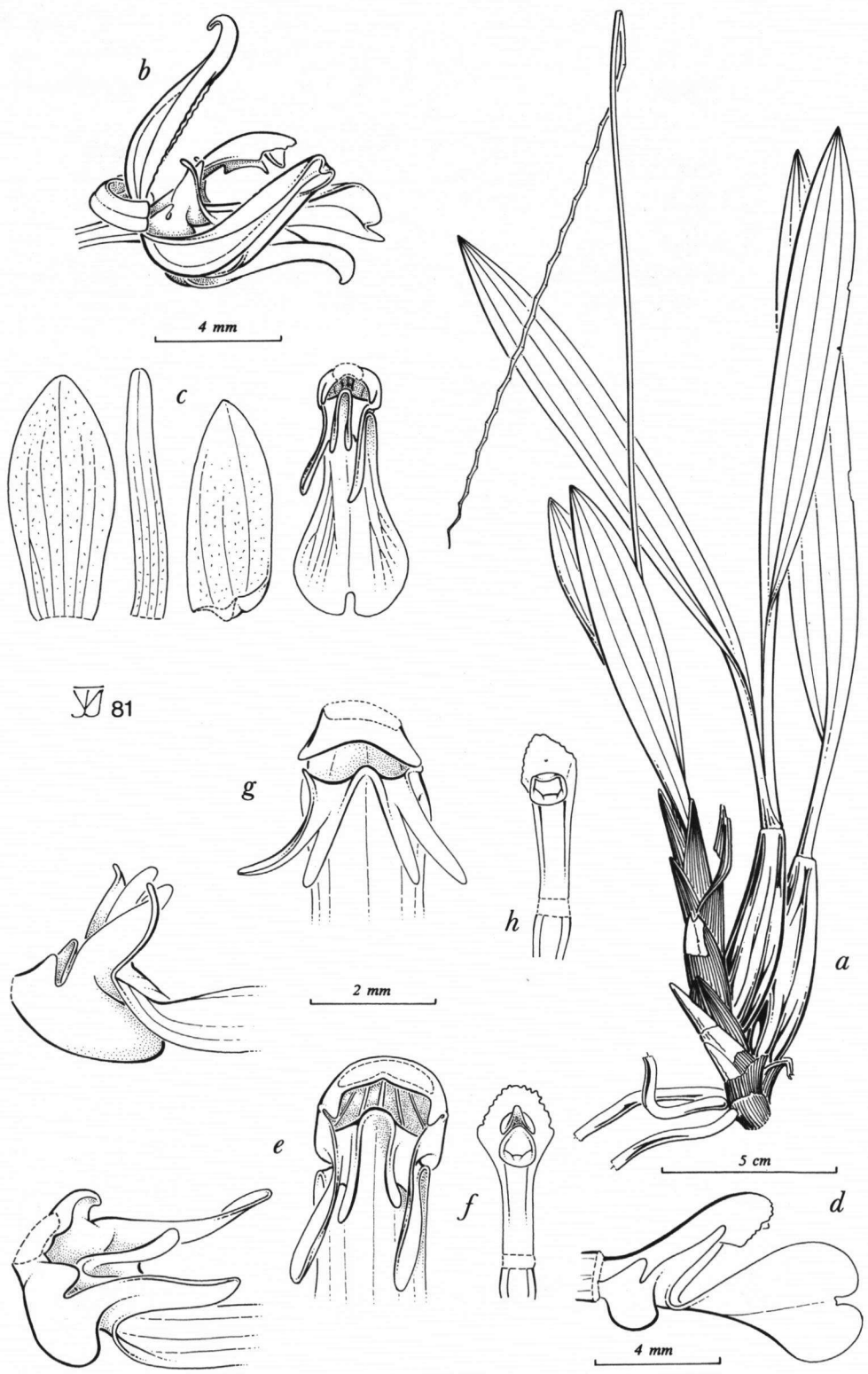


Fig. 25. de Vogel.

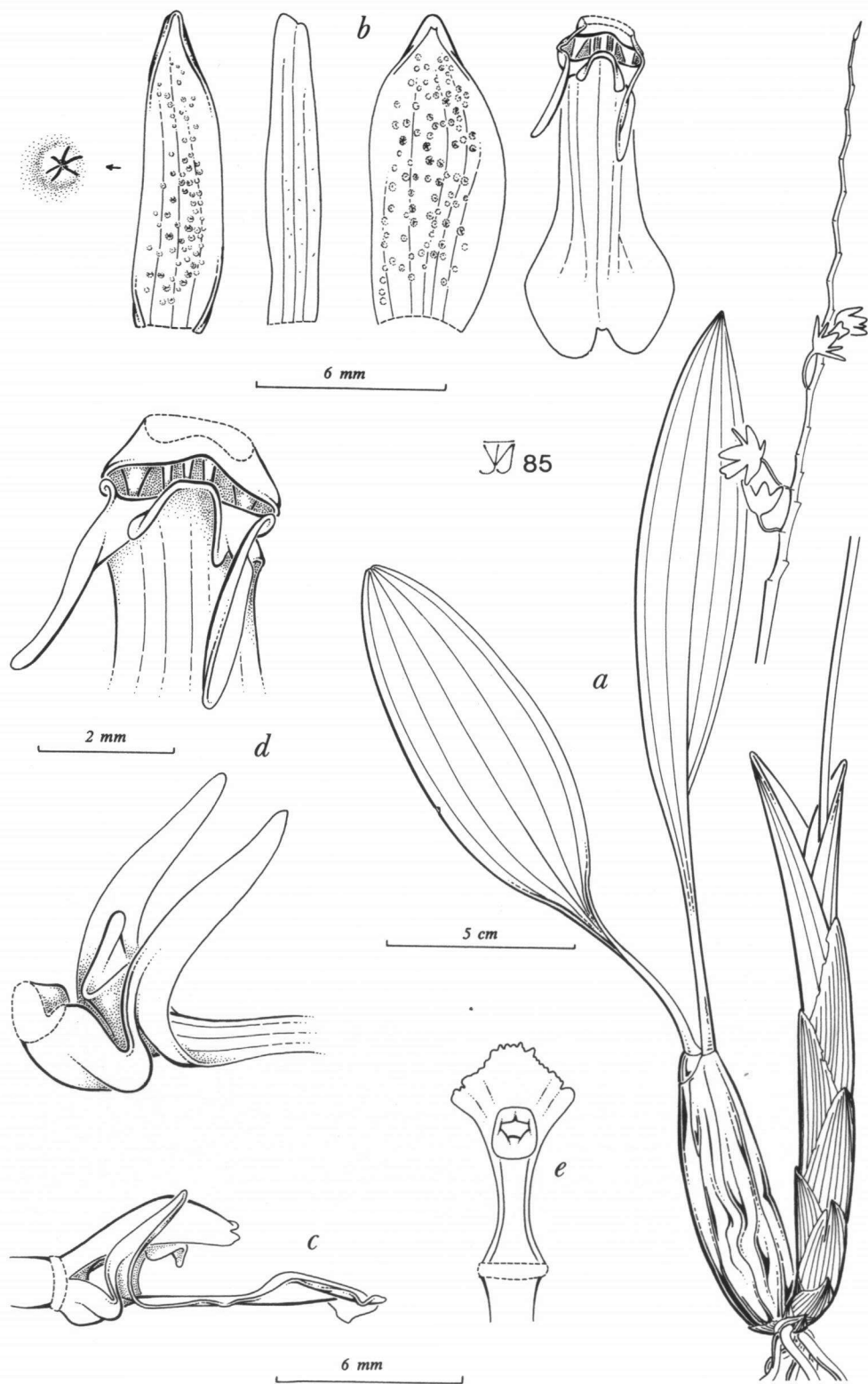


Fig. 26.

Ames.

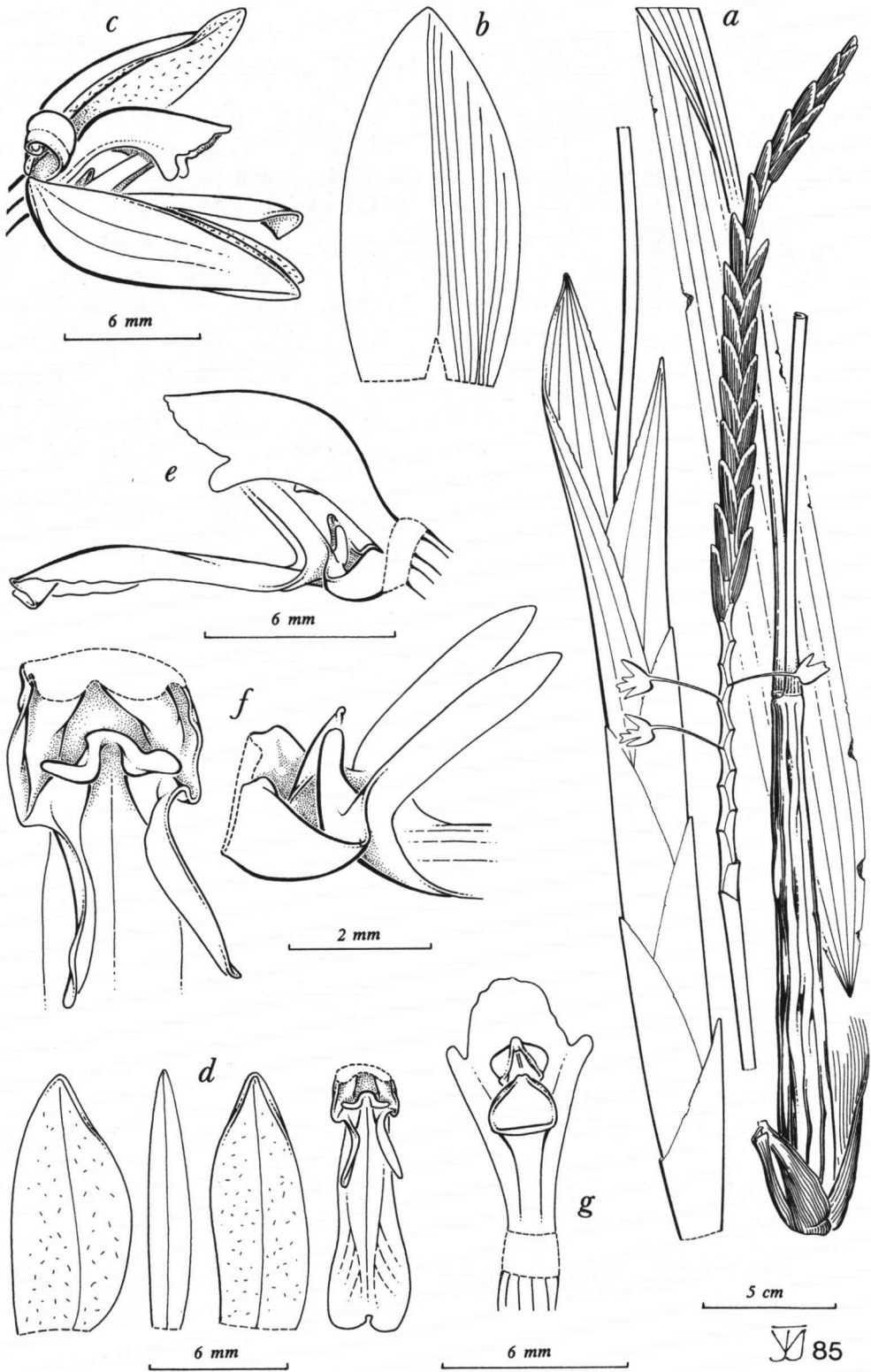


Fig. 27. de Vogel.

LEGENDS OF THE PLATES

Plate 1

- a. *Acriopsis gracilis* Minderhoud & de Vogel
From Borneo, Sabah
Photograph A. Lamb
- b. *Acriopsis indica* Wight
From Java
Photograph J. Comber
- c. *Acriopsis javanica* Reinw. ex Blume
var. *javanica*
Leiden, cult. Hort. (Roos & Franken)
20741, from Sumatra
Photograph B. N. Kieft
(collection Rijksherbarium, Leiden)
- d. *Acriopsis javanica* Reinw. ex Blume
var. *javanica*
Leiden, cult. Hort. 21370, from Australia
Photograph B. N. Kieft
(collection Rijksherbarium, Leiden)

Plate 3

- a. *Chelonistele ingloria* (J.J. Smith) Carr
Leiden, cult. Hort. (Burt & Martin
B. 5215) 22064, from Borneo,
Sarawak
Photograph B. N. Kieft
(collection Rijksherbarium, Leiden)
- b. *Chelonistele lurida* (L. Linden & Cogn.)
Pfitzer var. *lurida*
From Borneo, Sabah
Photograph J. Comber
- c. *Chelonistele lurida* (L. Linden & Cogn.)
Pfitzer var. *grandiflora* de Vogel
Lewis 336, from Borneo, Sarawak
Photograph G. P. Lewis (collection Kew)
- d. *Chelonistele sulphurea* (Blume) Pfitzer
var. *sulphurea*
From Sumatra
Photograph J. Comber

Plate 2

- a. *Acriopsis ridleyi* Hooker f.
Singapore, cult. Hort., possibly from
Malaysia or Borneo
Photograph J. Comber
- b. *Acriopsis ridleyi* Hooker f.
Leiden, cult. Hort. (Roos & Franken)
20761, from Borneo, Kalimantan
Photograph B. N. Kieft
(collection Rijksherbarium, Leiden)
- c. *Bracisepalum densiflorum* de Vogel
Leiden, cult. Hort. (de Vogel) 20313,
from Celebes
Photograph C.G.J.M. van Vliet
(collection Rijksherbarium, Leiden)
- d. *Chelonistele amplissima* (Ames &
Schweinfurth) Carr
From Borneo, Sabah
Photograph J. Comber

Plate 4

- a. *Geesinkorchis alaticalloso* de Vogel
Bogor, cult. Hort. 981.VIII.62 (Darnaedi
& Waluyo), from Borneo, Kalimantan
Photograph B. N. Kieft
(collection Rijksherbarium, Leiden)
- b. *Geesinkorchis alaticalloso* de Vogel
From Borneo, Sabah
Photograph J. Comber
- c. *Geesinkorchis phaiostele* (Ridley)
de Vogel
Leiden, cult. Hort. (Burt & Woods
B. 2667) 22090, from Borneo, Sabah
Photograph B. N. Kieft
(collection Rijksherbarium, Leiden)
- d. *Nabalua angustifolia* de Vogel
Kew, cult. Hort. (Brentnall 154), from
Borneo, Sabah
Photograph W. Rossi (collection Kew)

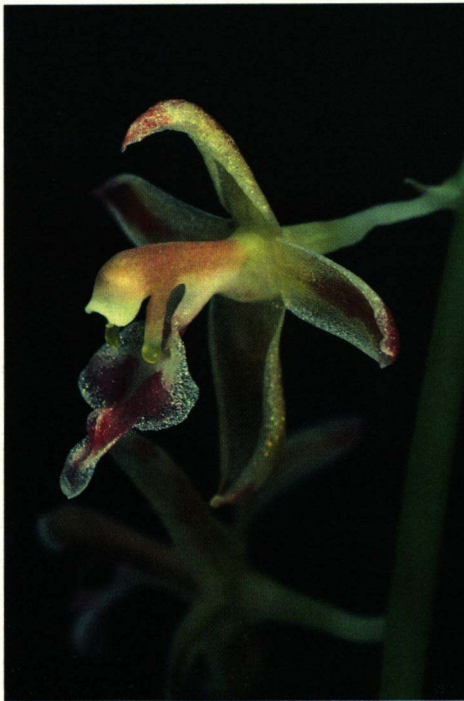
Plate 1



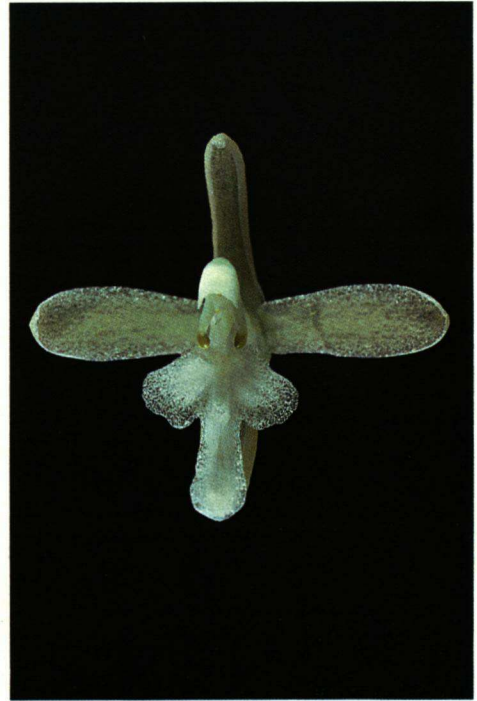
a. Minderhoud & de Vogel



b. Wight



c. Reinw. ex Blume var.



d. Reinw. ex Blume var.

Plate 2



a. Hooker f.



b. Hooker f.



c. de Vogel



d. (Ames & Schweinf.) Carr

Plate 3



a. (J.J. Smith) Carr



b. (L. Linden & Cogn.) Pfitzer



c. (L. Linden & Cogn.) Pfitzer

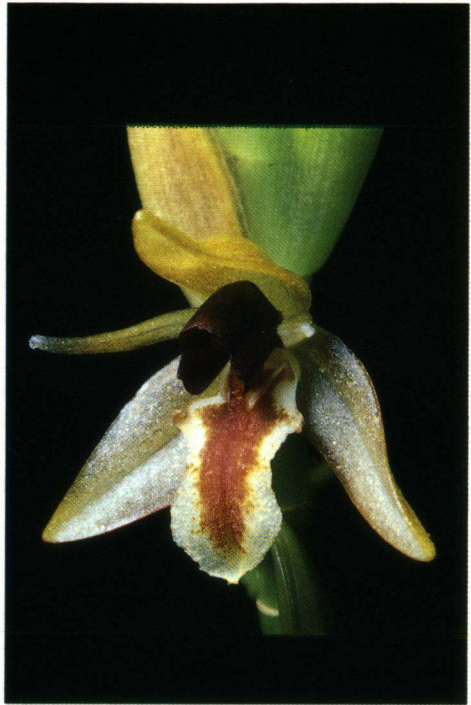


d. (Bl.) Pfitzer var. *...*

Plate 4



a. de Vogel



b. de Vogel



c. (Ridley) de Vogel



d. de Vogel