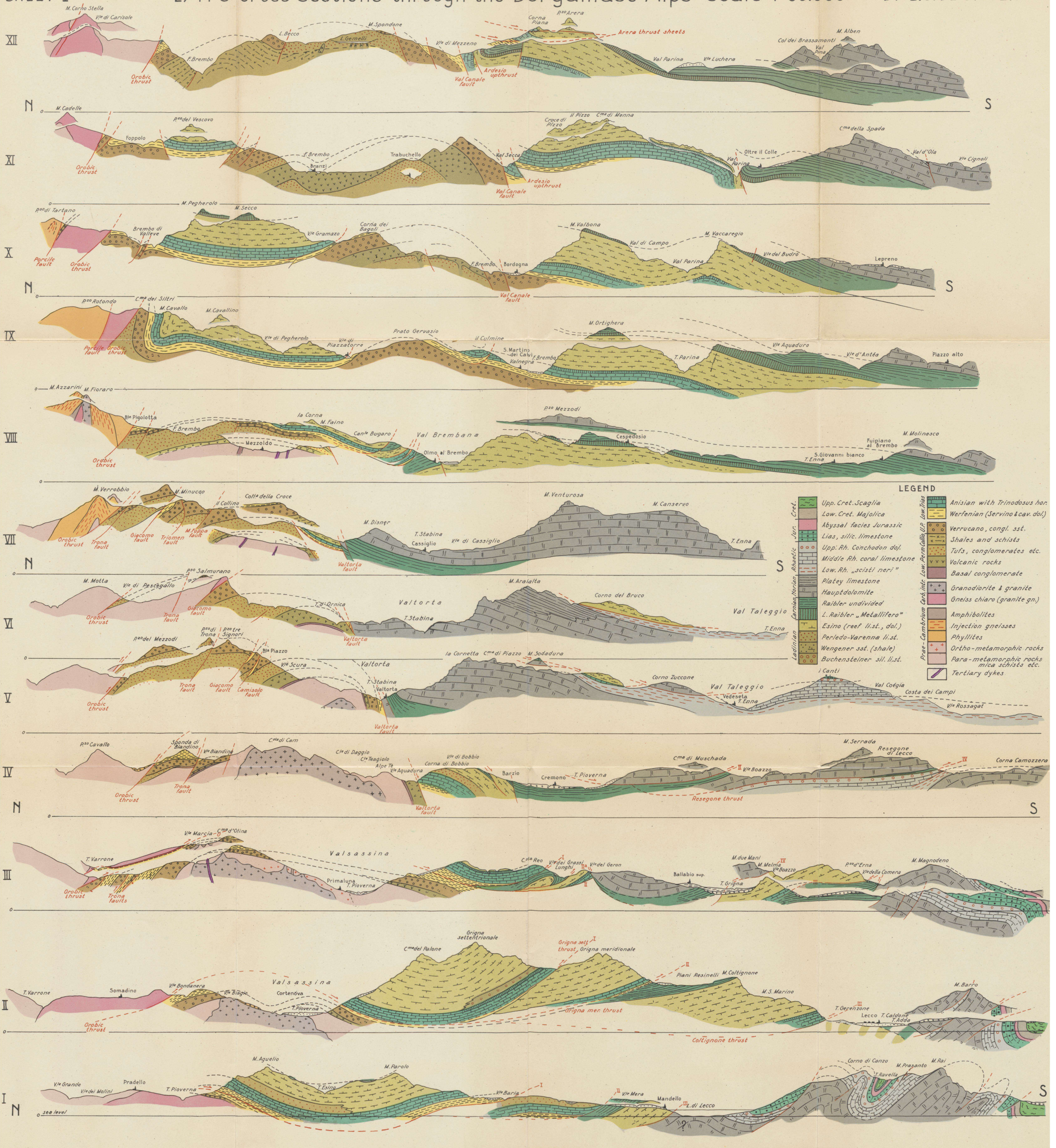


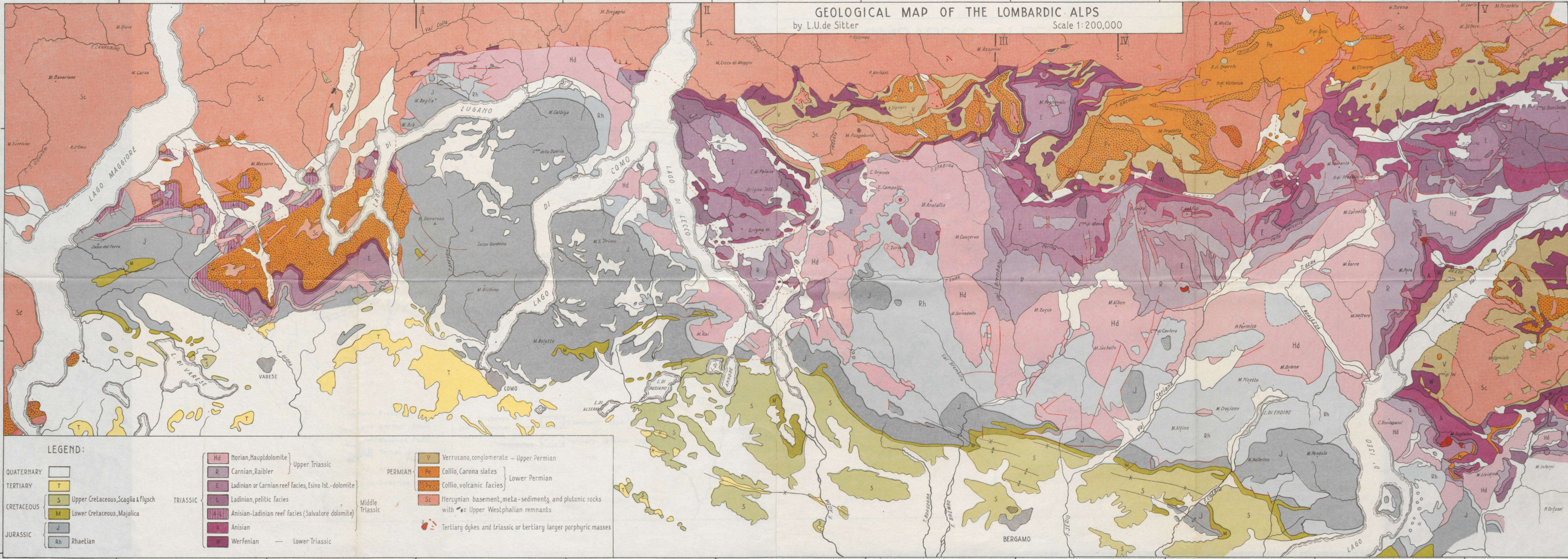
GEOLOGICAL MAP OF THE BERGAMASC ALPS SHEET II

SCALE 1:50.000 BY L.U. DE SITTER

SHEET I 27 N-S cross Sections through the Bergamasc Alps scale 1:50.000 BY L.U. DE SITTER



GEOLOGICAL MAP OF THE LOMBARDIC ALPS
 by L.U.de Sitter
 Scale 1:200,000



LEGEND:

QUATERNARY	□				
TERTIARY	T				
CRETACEOUS	S	Upper Cretaceous, Scaglia & flysch			
	M	Lower Cretaceous, Majolica			
JURASSIC	J				
	Rh	Rhaetian			

TRIASSIC	Hd	Norian, Hauptdolomite	} Upper Triassic
	R	Carnian, Raibler	
	E	Ladinian or Carnian reef facies, Tsino Ist. - dolomite	} Middle Triassic
	L	Ladinian, pelitic facies	
	A-L	Anisian-Ladinian reef facies (Salvatore dolomite)	
A	Anisian		
W	Werfenian	— Lower Triassic	

PERMIAN	V	Verrucano, conglomerate	— Upper Permian
	Pe	Collio, Carona slates	} Lower Permian
	Sc	Collio, volcanic facies	
	Sc	Hercynian basement, meta-sediments, and plutonic rocks with Upper Westphalian remnants	
			••• Tertiary dykes and triassic or tertiary larger porphyric masses