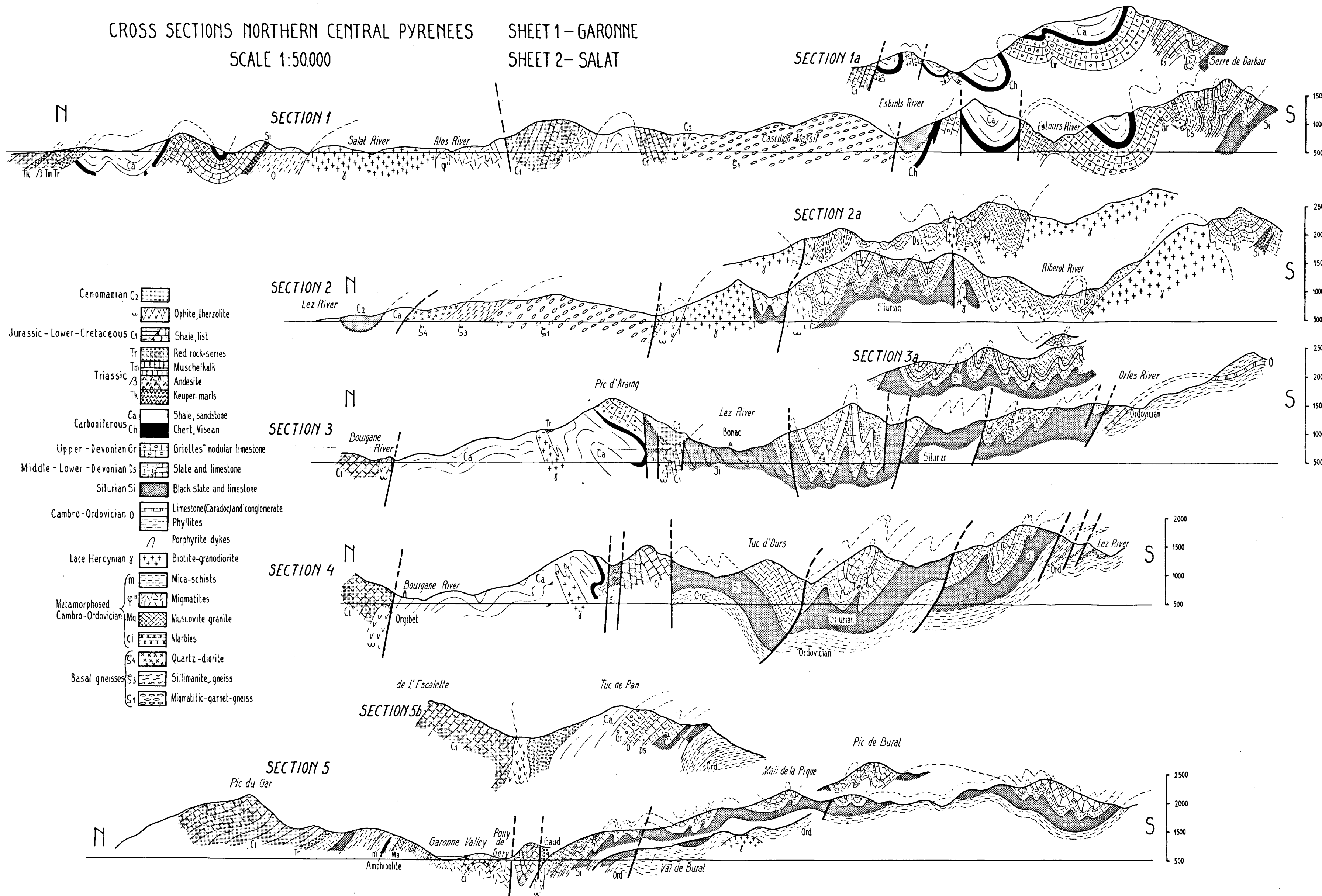
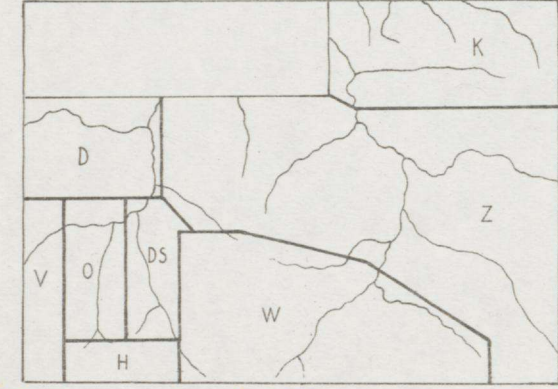
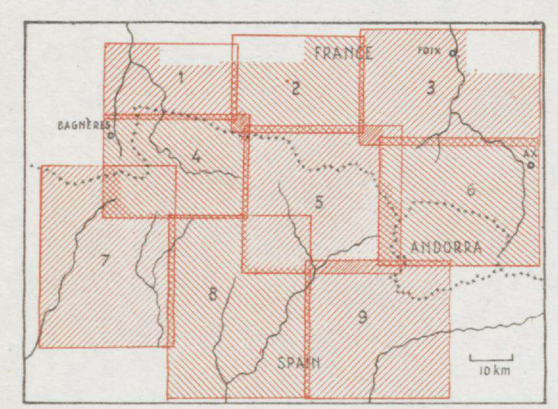


CROSS SECTIONS NORTHERN CENTRAL PYRENEES
 SCALE 1:50.000
 SHEET 1—GARONNE
 SHEET 2—SALAT



GEOLOGICAL MAP PALEOZOIC CENTRAL PYRENEES SHEET 2 - SALAT-FRANCE SCALE 1:50.000

Published by the Geological Institute, Leiden University
Editors: L.U. de SITTER and H.J. ZWART



Geology by:
J.van Deventer D
C.van der Heyde H
J.Keizer K
L.O'Herne V
T.Volker O
A.J.Wissink W
H.J.Zwart Z
Dept.Survey DS

& Fossil locality
 ✕ Economic deposits: Pb-Galena, Zn-Sphalerite

— Normal contact
 - - - Transitional contact
 = Fault

QUATERNARY
 Alluvium
 Landslide
 Scree
 Alluvial fan
 Terrace
 Glacial deposits
 Terminal moraine

MESOZOIC & TERTIARY
 C_u UPPER CRETACEOUS, TERTIARY, undifferentiated
 C_l LOWER CRETACEOUS, ophites
 C_m Metamorphic facies
 J JURASSIC, LOWER CRETACEOUS
 K KEUPER, gypsum, marl
 T_m MUSCHELKALK, limestone, dolomite
 T_o (PERMO)TRIASSIC, red beds, cgl., sst., mudstone
 B Basalt flows

CARBONIFEROUS
 Ca VISEAN micaceous dark shales and sst. black chert
 C_u UPPER DEV. nodular limestone, griotte
 C_m MIDDLE DEV. blue limestone, dolomite
 C_l MIDDLE & limestone
 C_o LOW DEV. slates, slaty lst. or undifferentiated Dev.

DEVONIAN
 D_o Black ampehitic shales with limestone bands

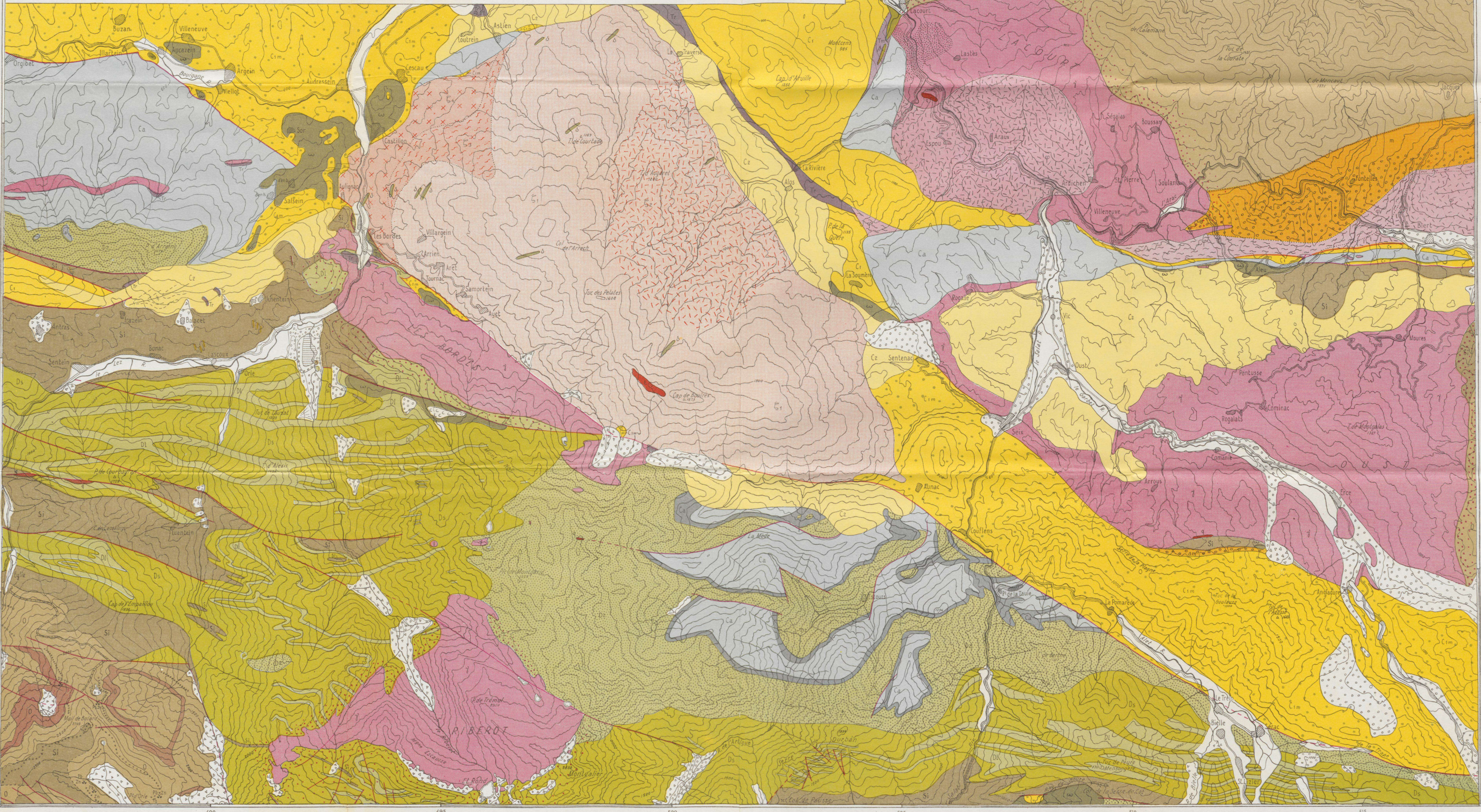
SILURIAN
 S_o Slates, sandstone, meritic facies
 S_l Slaty limestone, caradoc
 S_c Coarse, conglomerate
 S_m Massive limestone dol. metalliferous

CAMBRO-ORDOVICIAN
 O Micaschists
 O_o Andalusite micaschists

LATE CARBON. INTRUSIVES
 B Biotite granodiorite to quartzdiorite
 Al Albitite
 P Porphyrite dykes
 C Contact aureole

MIGMATITE SERIES
 Q Quartzdiorite
 S Sillimanite gneiss
 M Migmatitic garnet-gneiss
 F Fine grained granitic garnet-gneiss
 G Garnet bearing sillimanite gneiss
 R Garnet bearing quartzdiorite

BASAL GNEISS SERIES
 M Muscovite-granite
 A Amphibolite
 Q Quartzdykes

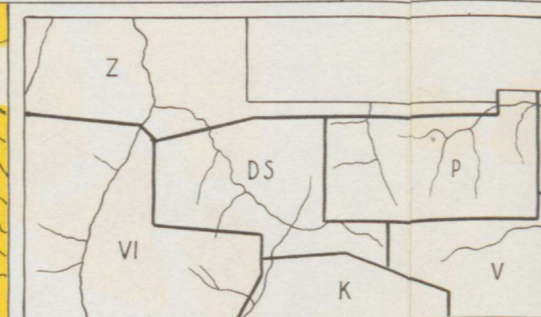


GEOLOGICAL MAP PALEOZOIC CENTRAL PYRENEES SHEET 1 - GARONNE - FRANCE

SCALE 1:50,000

Published by the Geological Institute, Leiden University

Editors: L.U. de SITTER and H.J. ZWART



Geology by:
 J. van Deventer D
 A. J. Kapel K
 C. R. Pietersz P
 F. W. Vlierboom VI
 T. Volker V
 H. J. Zwart Z
 Dept. Survey DS

Economic deposits:
 Pb - Galena
 Zn - Sphalerite

δ Source
 — Normal contact
 - - - Transitional contact
 - - - Fault

- QUATERNARY
- Alluvium
 - Scree
 - Alluvial fan
 - Glacial deposits
 - Landslide
- MESOZOIC & TERTIARY
- Ce UPPER CRETACEOUS, TERTIARY, undifferentiated
 - Lo LOWER CRETACEOUS, ophites
 - Cfm Metamorphic facies
 - Cj JURASSIC, LOWER CRETACEOUS fault breccia
 - Tr (PERMO?) - TRIASSIC
 - Ca CARBONIFEROUS micaceous dark shales and sst. arkosic pebble beds black chert

- DEVONIAN
- U UPPER DEV. nodular limestone, griotte
 - DI MIDDLE & limestone
 - Ds LOW DEV. slates, slaty lst. or undifferentiated Dev.
- SILURIAN
- Si Black amplitic slates with limestone bands
- CAMBRO-ORDOVICIAN
- O Slates, sandstone, neritic facies
 - S Sandstone beds
 - Sl Slaty limestone, caradoc
 - Co Coarse conglomerate
 - M Massive limestone dol. metalliferous
- METAM FACIES OF CAMBRO-ORD.
- m Micaschists
- LATE CARBON. INTRUSIVES
- B Biolite granodiorite to quartzdiorite
 - P Porphyrite dykes
- MIGMATITE SERIES
- g Sillimanite gneiss
 - mi Migmatites

