

GEOLOGICAL MAP of the SOUTHERN CANTABRIAN MOUNTAINS, SPAIN

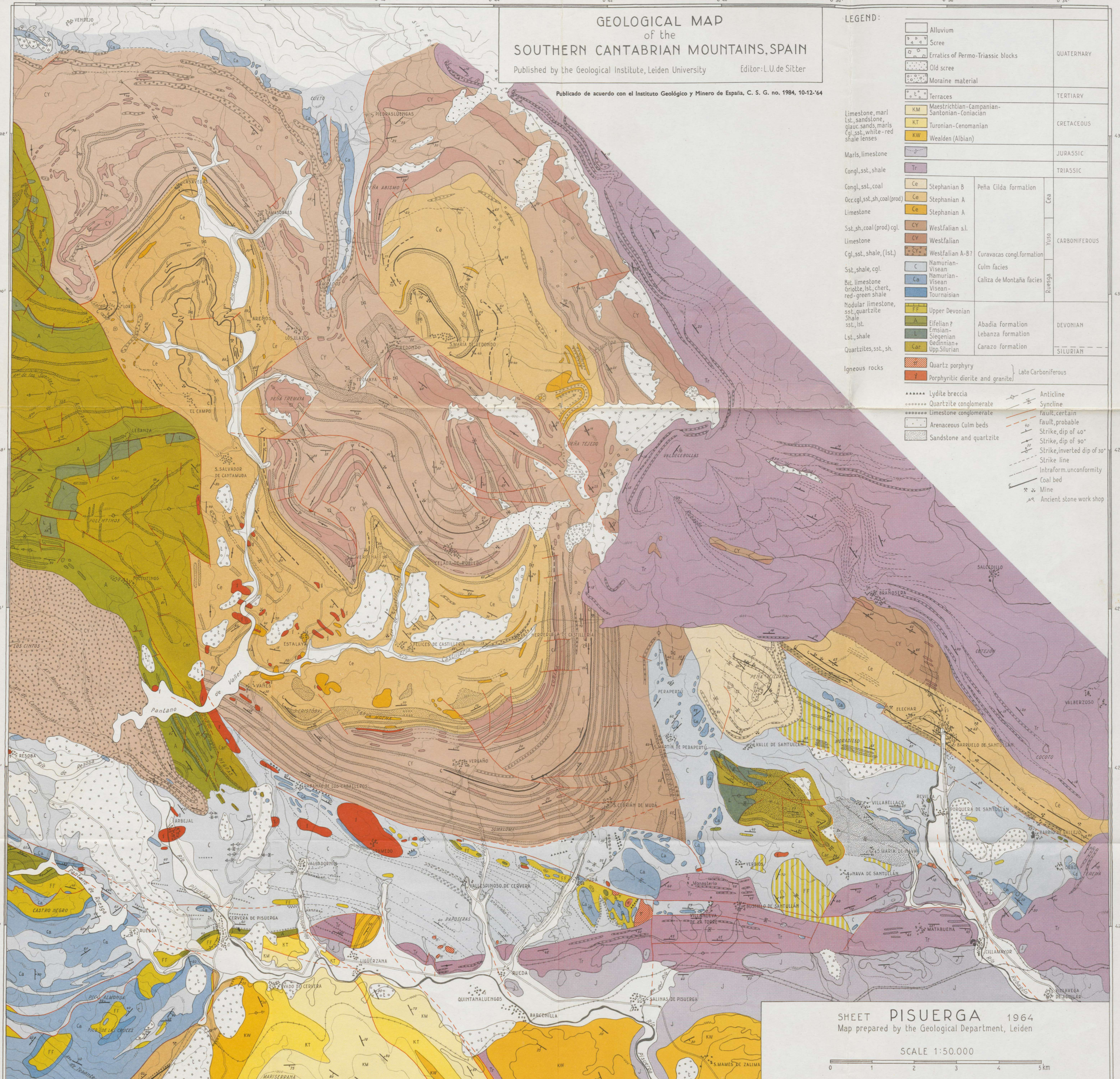
Published by the Geological Institute, Leiden University Editor: L.U. de Sitter

Publicado de acuerdo con el Instituto Geológico y Minero de España, C. S. G. no. 1984, 10-12-'64

LEGEND:

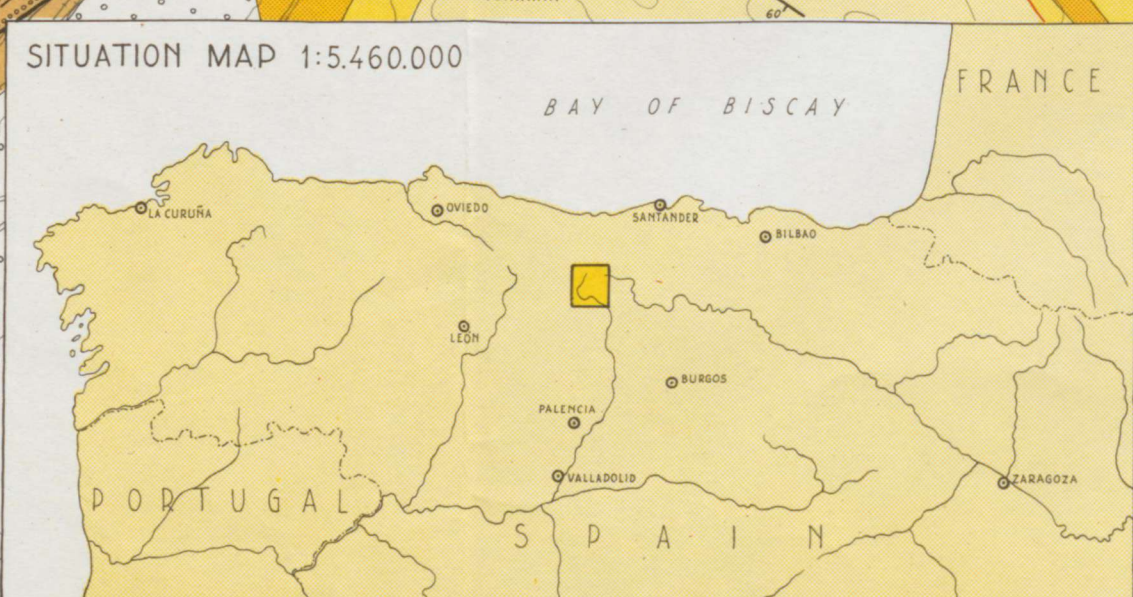
	Alluvium		
	Scree		
	Erratics of Permo-Triassic blocks		QUATERNARY
	Old scree		
	Moraine material		
	Terraces		TERTIARY
	Maestrichtian-Campanian-Santonian-Cenomanian		CRETACEOUS
	Turonian-Cenomanian		
	Wealden (Albian)		
	Marls, limestone		JURASSIC
	Congl., sst., shale		TRIASSIC
	Stephanian B	Peña Cilda formation	Cea
	Stephanian A		
	Stephanian A		
	Westfalian s.l.		Yuso
	Westfalian		
	Westfalian A-B?	Curavacas congl. formation	Ruesga
	Namurian-Visean	Culm facies	
	Namurian-Visean	Caliza de Montaña facies	
	Visean-Tournaisian		
	Upper Devonian		DEVONIAN
	Eifelian?	Abadia formation	
	Emsian-Siegenian	Lebanza formation	
	Gedinnian-Upp. Silurian	Carazo formation	SILURIAN
	Igneous rocks		
	Quartz porphyry		Late Carboniferous
	Porphyritic diorite and granite		

Lydite breccia
 Quartzite conglomerate
 Limestone conglomerate
 Arenaceous Culm beds
 Sandstone and quartzite
 Anticline
 Syncline
 Fault, certain
 Fault, probable
 Strike, dip of 40°
 Strike, dip of 90°
 Strike, inverted dip of 30°
 Strike line
 Intraform. unconformity
 Coal bed
 Mine
 Ancient stone workshop

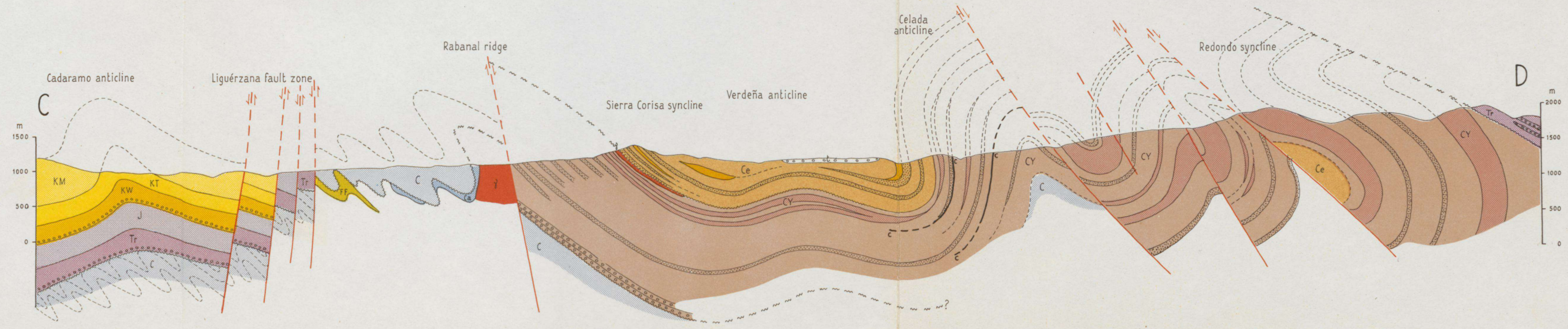
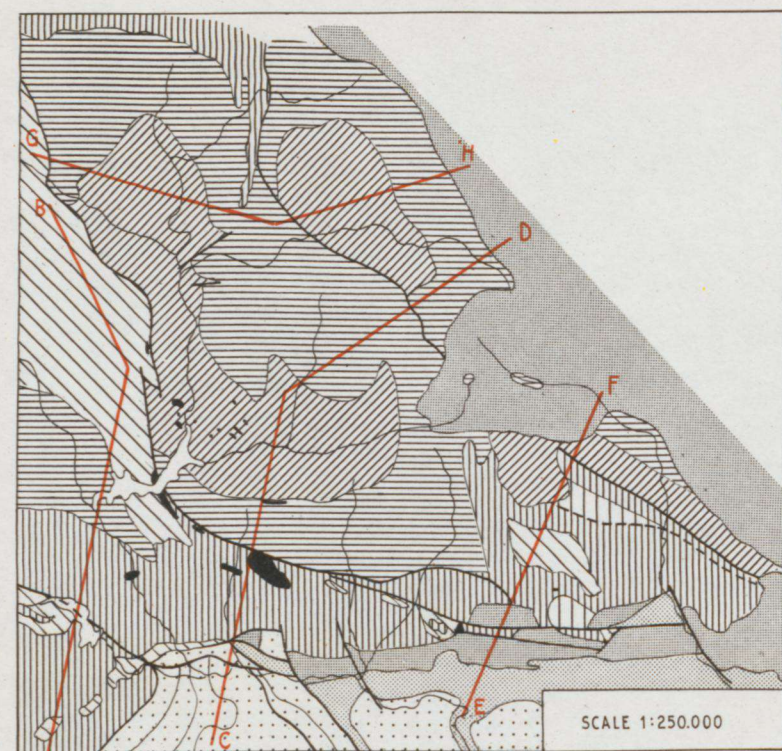
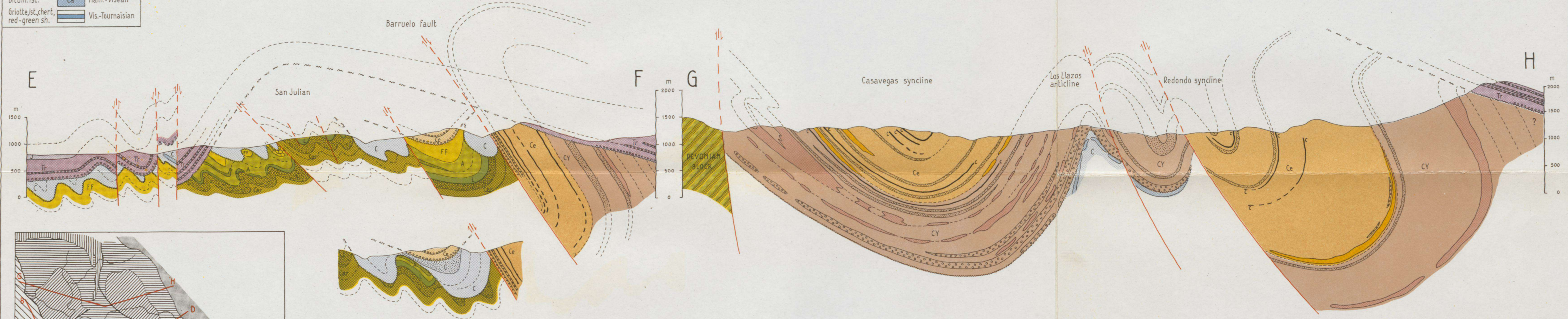
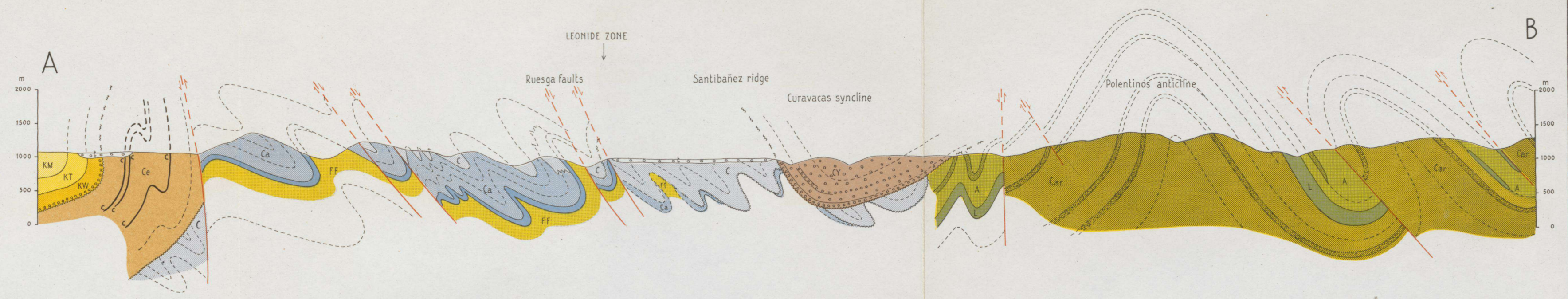


SHEET **PISUERGA** 1964
Map prepared by the Geological Department, Leiden

SCALE 1:50,000



o o o Tert. terraces	Nodular lst. Sst. quartzite Shale Sst. lst. Lst. shale Quartzite, sst. sh.	FF Upper Devonian A Eifelian L Ems.-Siegen. Car Gedinn.+Upp.Sil. γ Intrusives
KM Maestr.-Camp-Sant.-Con. Quartzite conglomerate	
KT Turon.-Cenom.	▨ Sandstone	
KW Wealden	— Coal bed	
J Jurassic	— Fault	
Tr Triassic		
Ce Stephanian B		
Ce Stephanian A		
Ce Stephanian A		
CY Westfalian s.l.		
CY Westfalian		
CY Westfalian A-B?		
c Nam.-Visean		
ca Nam.-Visean		
Vis.-Tournaisian		



Cross-Sections
Sheet PISUERGA, Cantabr. Mts.
SCALE 1:50.000
Geol. Dep't, Leiden University, 1964

