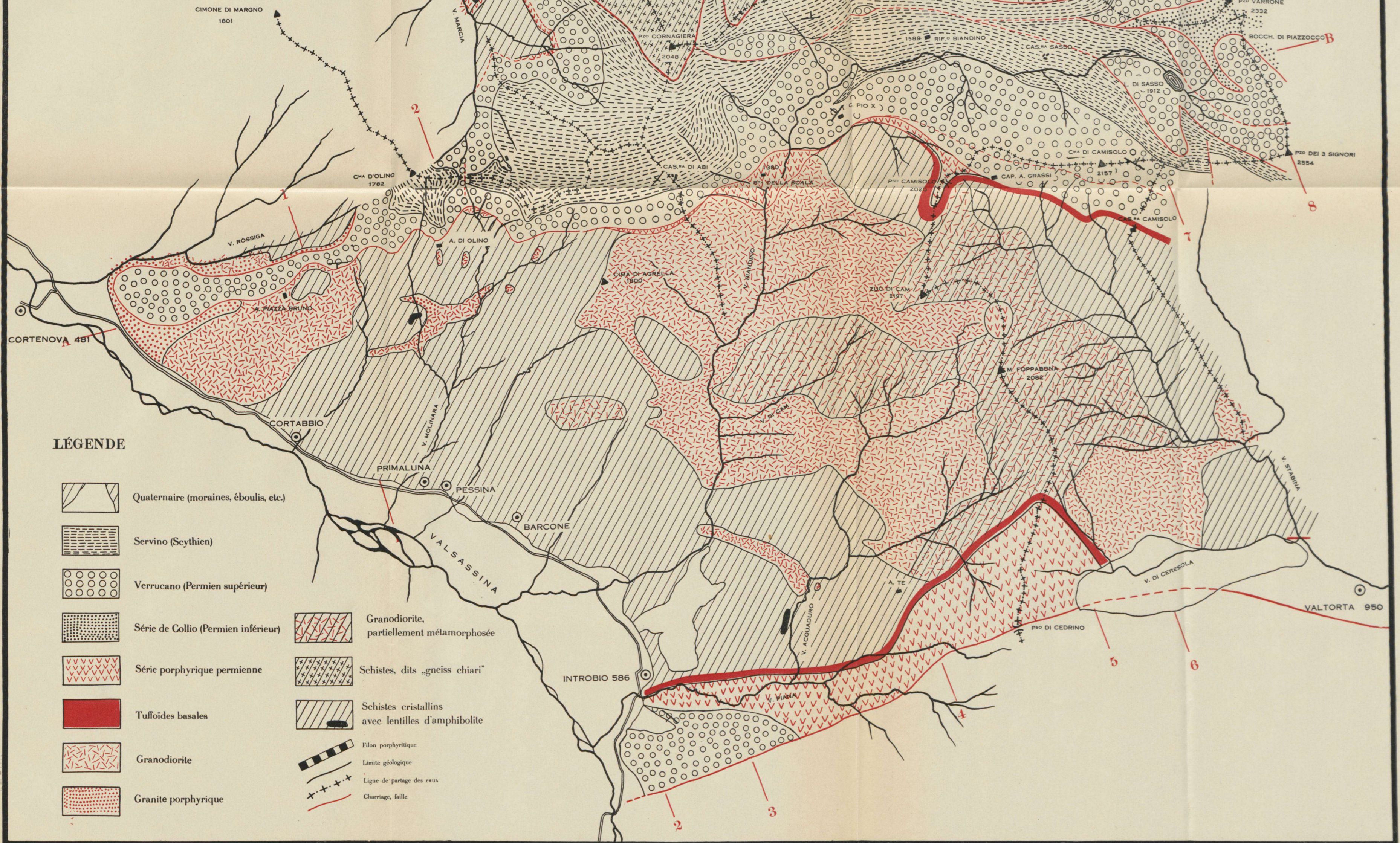


CARTE GÉOLOGIQUE DE LA CULMINATION CRISTALLINE DE LA VALSASSINA ET DE LA RÉGION ADJACENTE AU NORD

RELEVÉE
PAR
R. D. CROMMELIN
1929—1931
ÉCHELLE 1:25000

0 500 M. 1 K.M.



NNW

SSE

COUPES À TRAVERS LA CULMINATION CRISTALLINE DE LA VALSASSINA

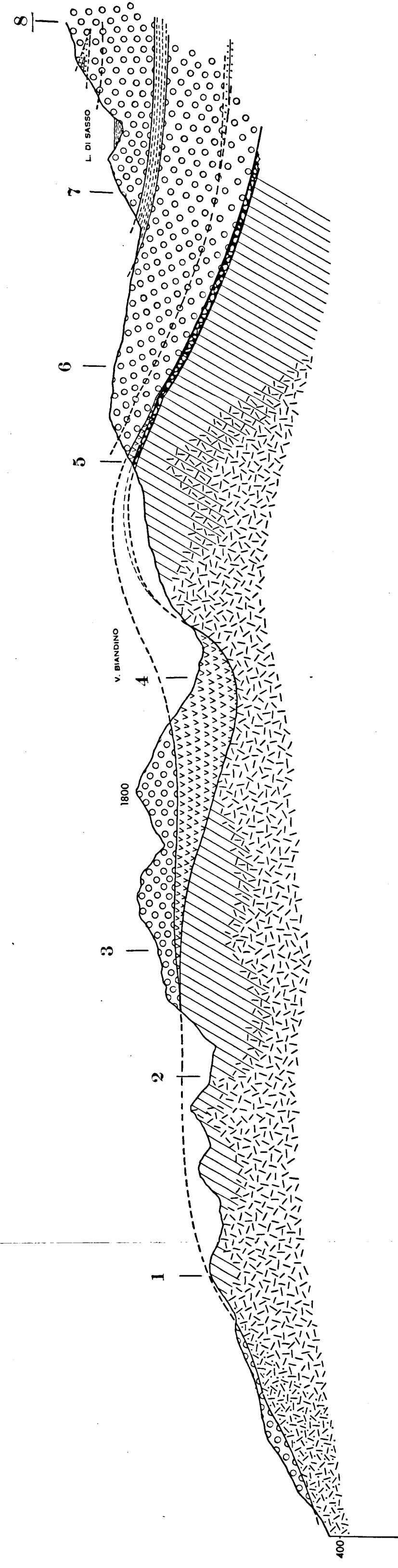
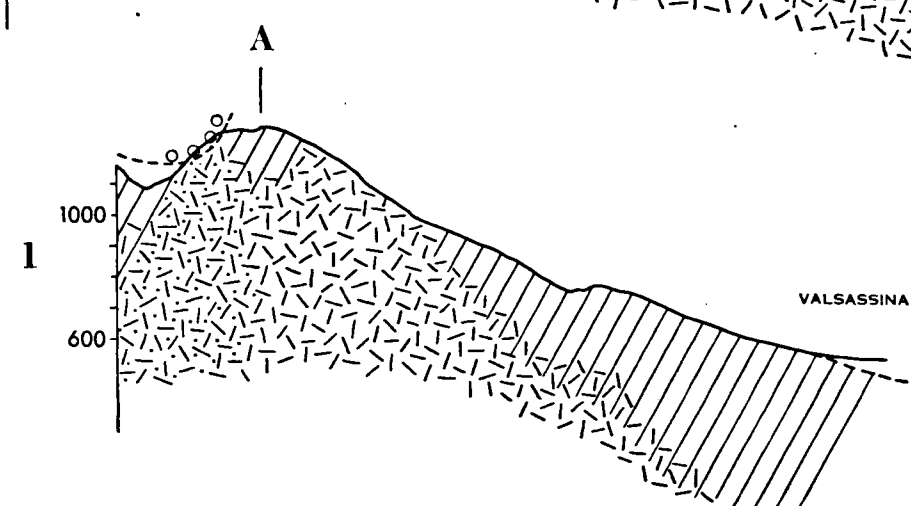
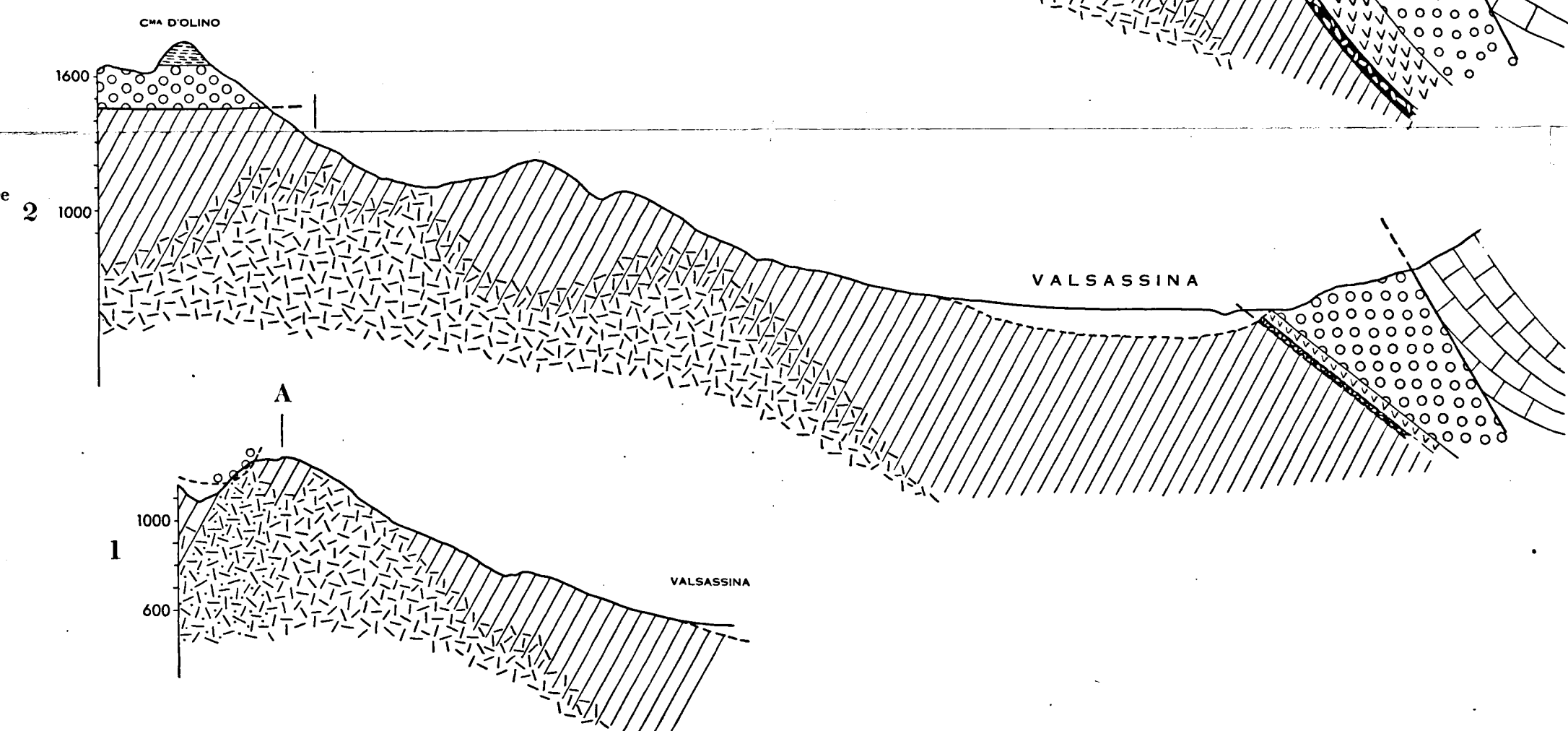
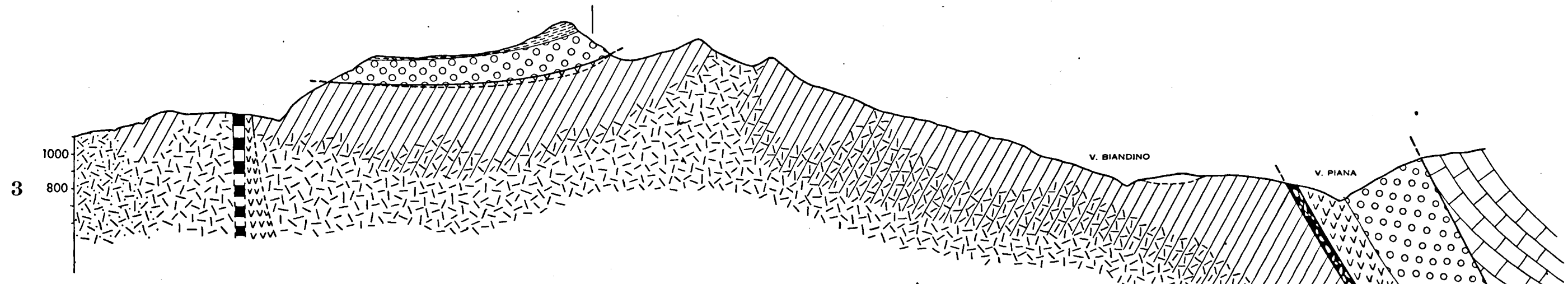
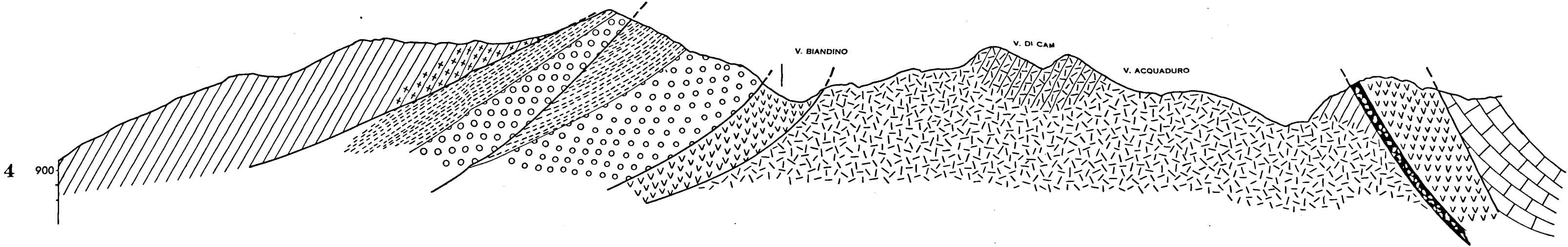
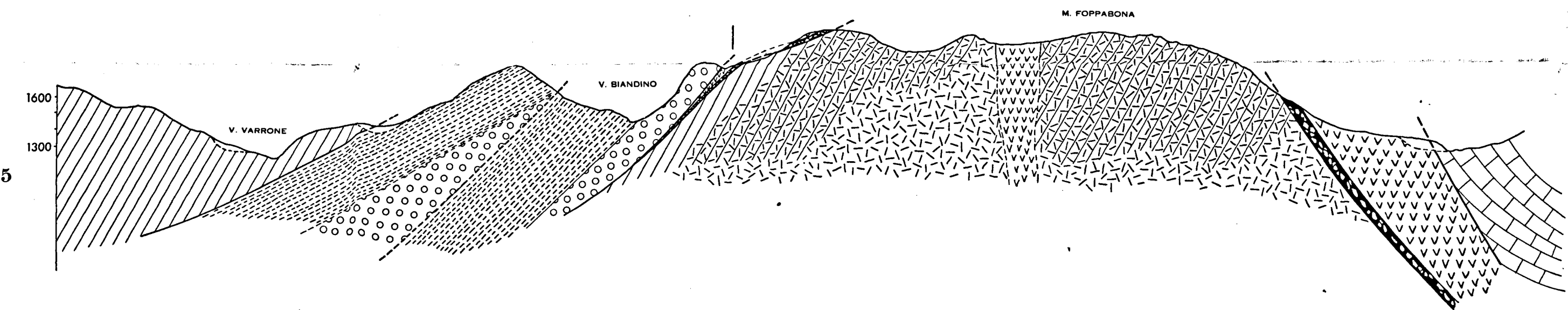
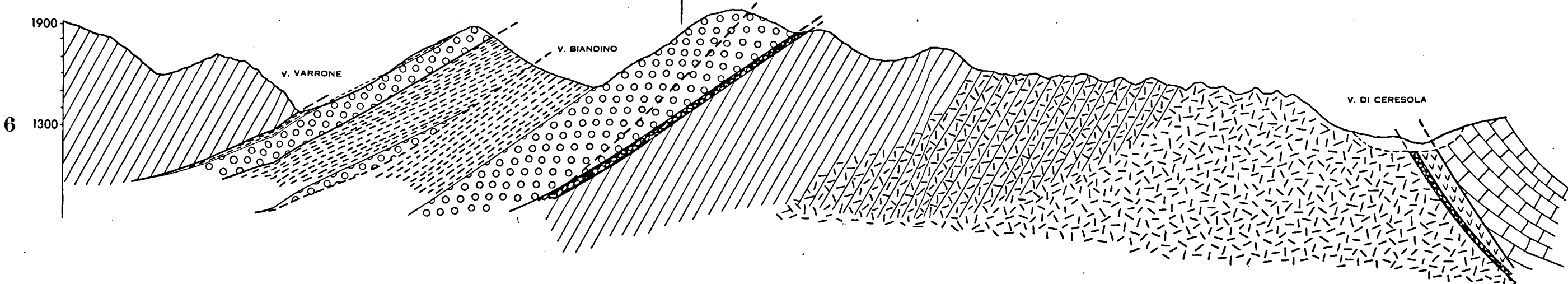
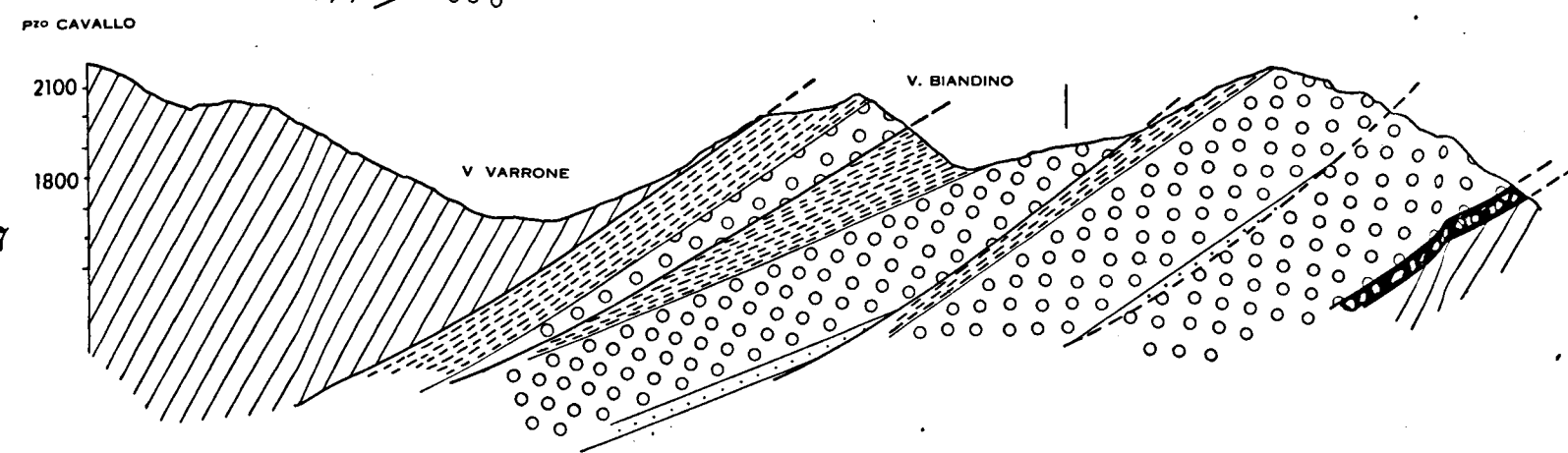
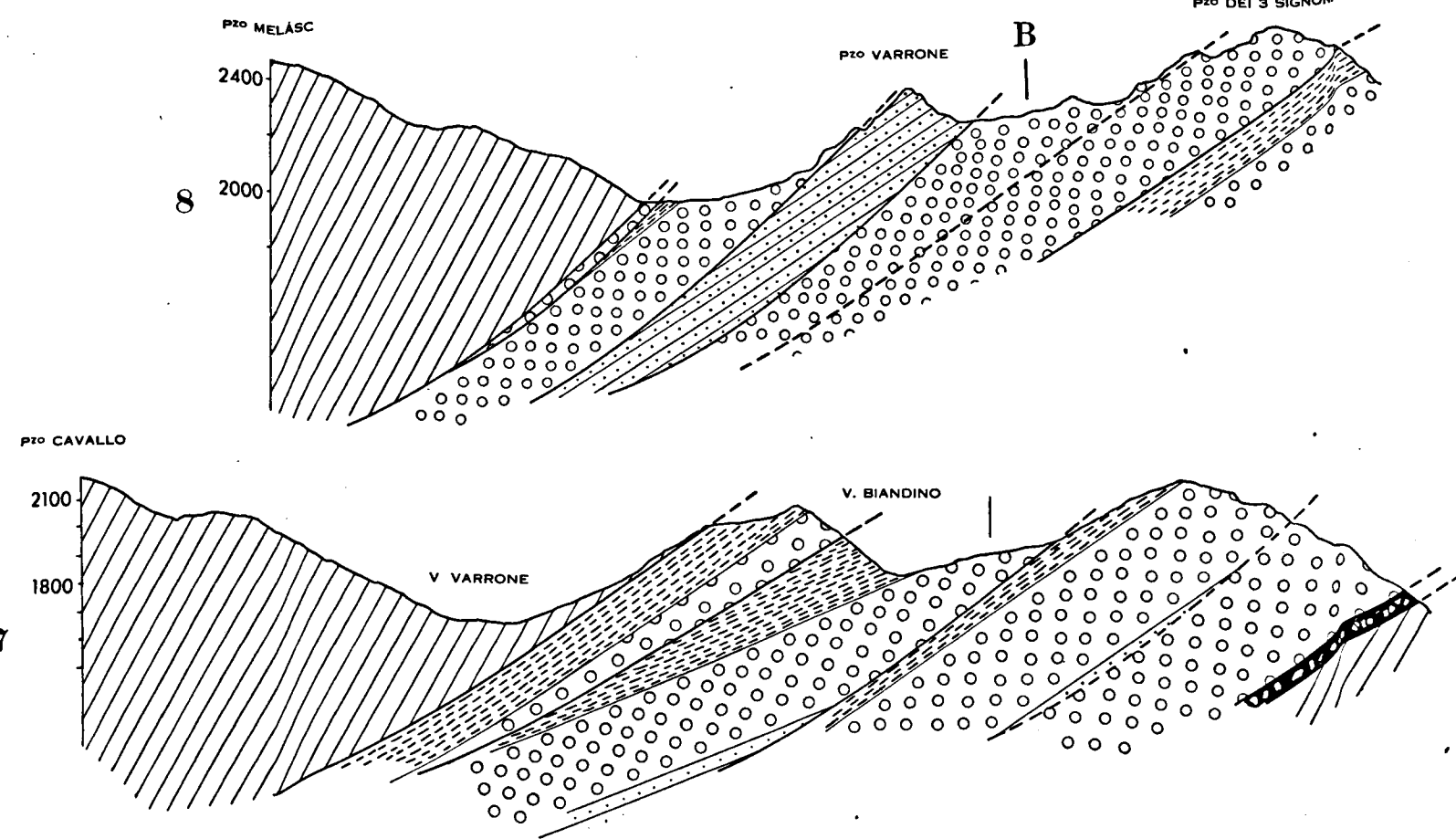
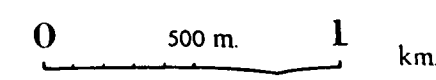
RELEVÉES

PAR

R. D. CROMMELIN

1929-1931

ECHELLE 1 : 25000



LEGENDE

- | | | | |
|--|-------------------------------------|--|---|
| | Calcaires triasiques | | Granodiorite, partiellement métamorphosée |
| | Servino (Scythien) | | Schistes, dits "gneiss chiari" |
| | Verrucano (Permien supérieur) | | Schistes cristallins |
| | Série de Collio (Permien inférieur) | | Filon porphyritique |
| | Série porphyrique permienne | | Charriage, faille |
| | Tuffoies basales | | Limite géologique |
| | Granodiorite | | |
| | Granite porphyrique | | |