

GEOLOGICAL MAP OF THE ROSAS - AREA

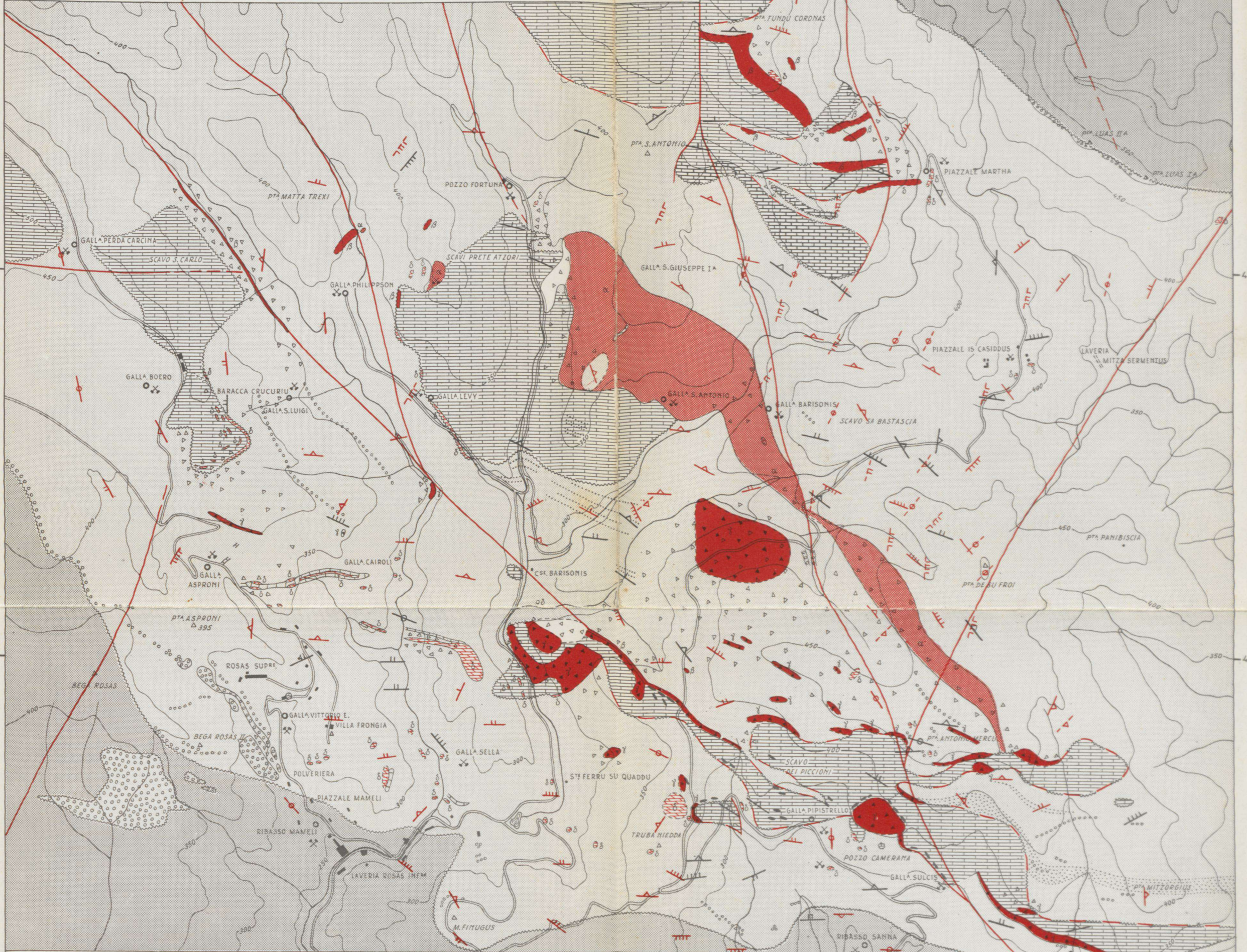
SULCIS - SARDINIA

CARTA GEOLOGICA DELLA ZONA DI ROSAS

SULCIS - SARDEGNA

J.J.K.POLL (1964)

1:10.000

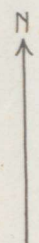


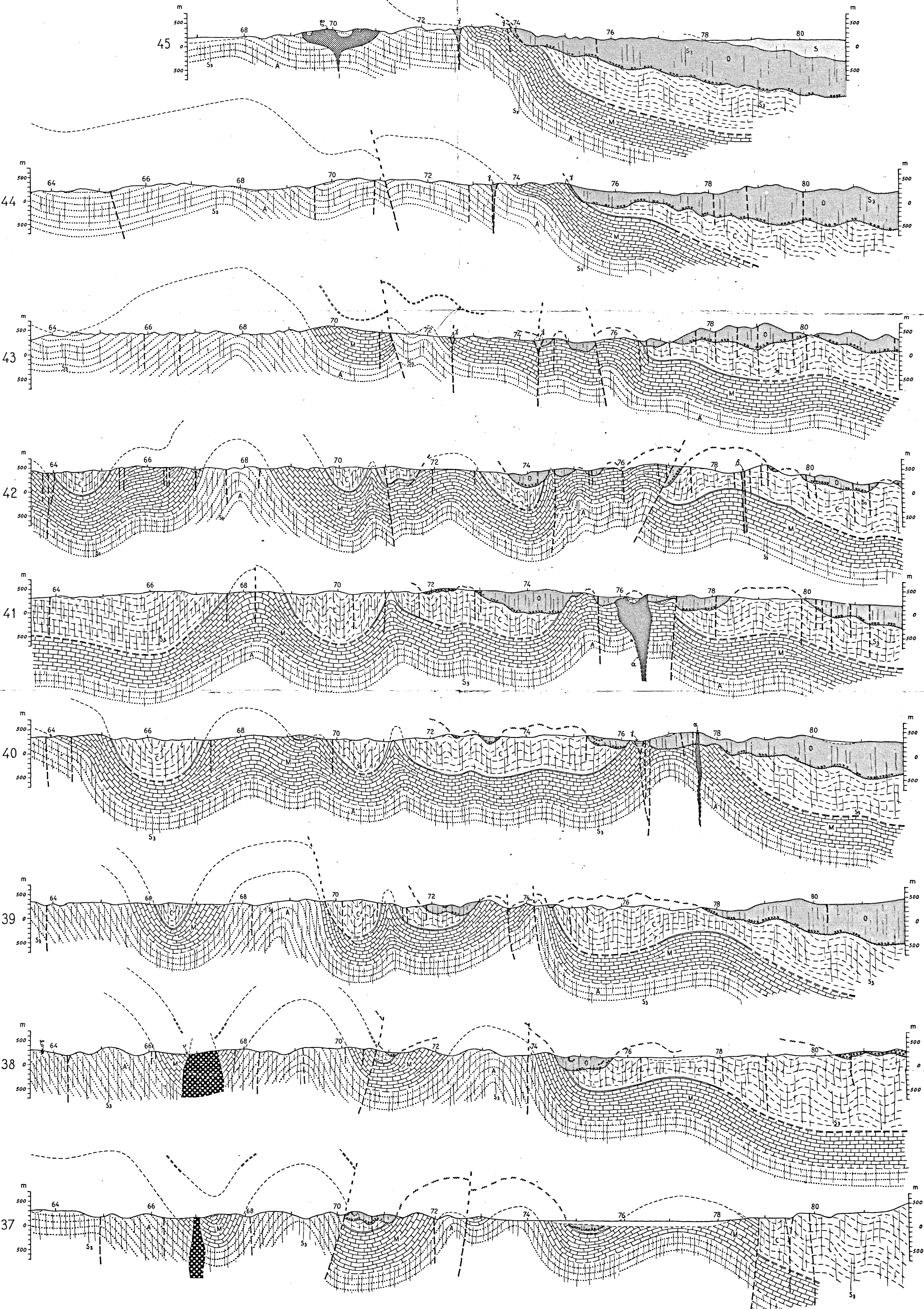
LEGEND:
LEGGENDA:

	Waste Detriti di falda			Unconformity Discordanza		
	Barite Barite			Unconformity and/or fault Discordanza e/o frattura		
IGNEOUS ROCKS AND METAMORPHIC ROCKS ROCCHE ENDOGENE E ROCCHE METAMORFOSATE	Metasomatic limestone Calcare metas. (Roccia verde)			Fault Frattura		
	Quartz-breccia Breccia quarzosa					
	Quartz dyke Quarzo in filone					
	Dolerite Dolerite					
ORDOVICIAN ORDOVICIANO	Slate with intercalated lime- stone and sandstone beds Scisti con banchi intercalati di calcare e arenarie		Bedding Stratificazione			
	Conglomerate Conglomerato					
	Cabitza (slate) scisti					
	CAMBRIAN CAMBRIANO	Metallifero slaty limestone calce scisti lst. and dolomite calc. e dolomia				

Cleavage Scistosità		
3 rd Deformation 3 ^a Deformazione		

* Mine
Miniera } Pb, Zn, Cu, etc. ✖ Ab. mine
Min. abb.ta



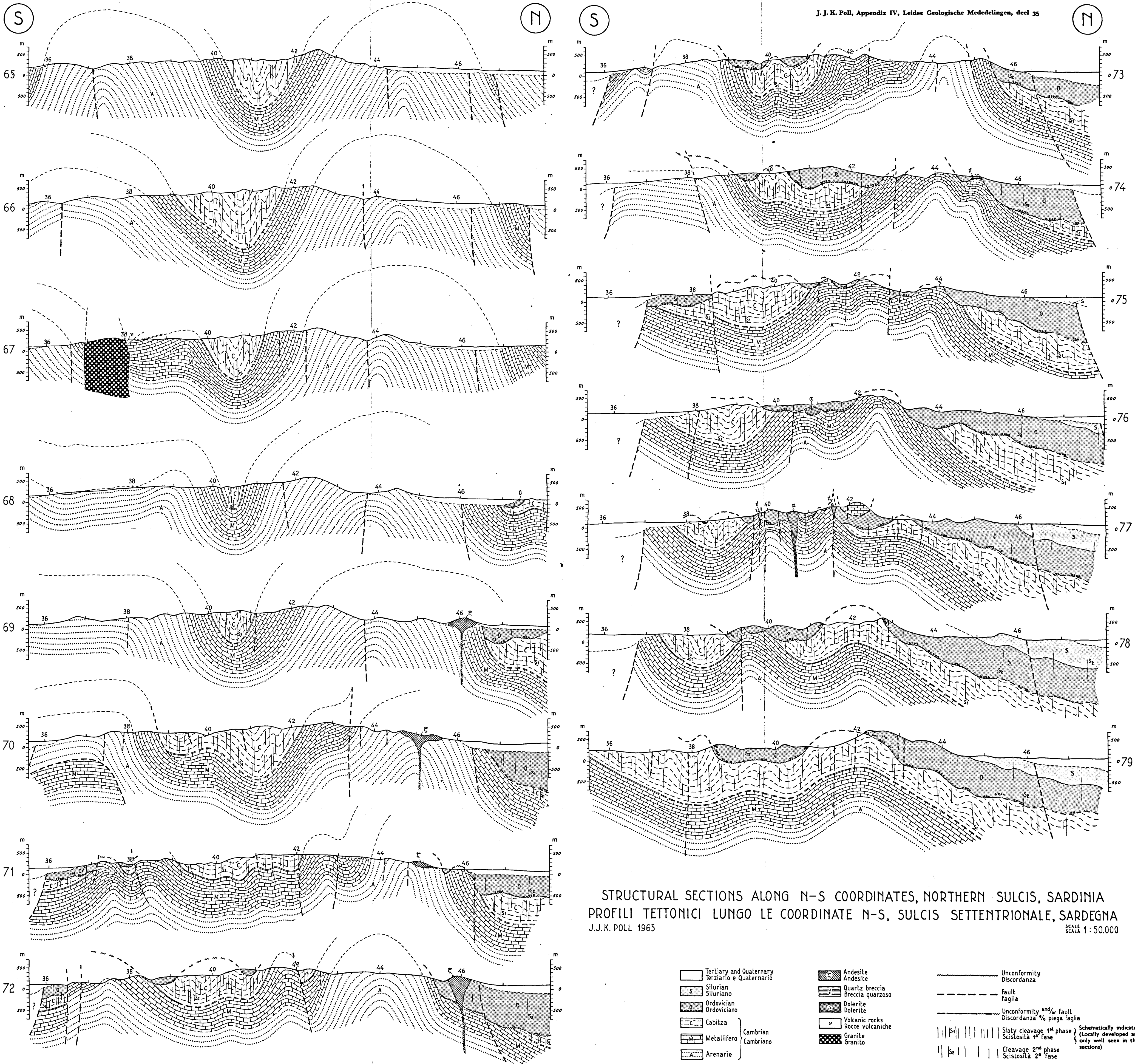


STRUCTURAL SECTIONS ALONG E-W COORDINATES, NORTHERN SULCIS, SARDINIA
 PROFILI TETTONICI LUNGO LE COORDINATE E-O, SULCIS SETTENTRIONALE, SARDEGNA

J.J.K.POLL 1965

SCALE
 SCALA 1 : 50.000

- | | | | | |
|--|-------------|------------------------------------|------------------------------------|--|
| Tertiary and Quaternary
Terziario e Quaternario | Cabitza | Andesite
Andesite | Dolerite
Dolerite | Unconformity
Discordanza |
| Silurian
Siluriano | Metallifero | Quartz breccia
Breccia quarzosa | Volcanic rocks
Rocce vulcaniche | Fault
Faglia |
| Ordovician
Ordoviciano | Arenarie | Quartz dyke
Quarzo in filone | Granite
Granito | 3 rd phase cleavage
Scistosità 3 ^a fase |



STRUCTURAL SECTIONS ALONG N-S COORDINATES, NORTHERN SULCIS, SARDINIA
 PROFILI TETTONICI LUNGO LE COORDINATE N-S, SULCIS SETTENTRIONALE, SARDEGNA
 J.J.K. POLL 1965
 SCALE 1:50,000

- | | | |
|--|--|---|
| <ul style="list-style-type: none"> Tertiary and Quaternary
Terziario e Quaternario Silurian
Siluriano Ordovician
Ordoviciano Cabitza
Cambrian
Cambriano Metallifero
Cambrian
Cambriano Arenarie
Cambrian
Cambriano | <ul style="list-style-type: none"> Andesite
Andesite Quartz breccia
Breccia quarzosa Dolerite
Dolerite Volcanic rocks
Rocce vulcaniche Granite
Granito | <ul style="list-style-type: none"> Unconformity
Discordanza fault
faglia Unconformity and/or fault
Discordanza %/o piega faglia Slaty cleavage 1st phase
Scistosità 1^a fase Cleavage 2nd phase
Scistosità 2^a fase |
|--|--|---|
- Schematically Indicated
(Locally developed and only well seen in thin sections)