

PLATES

Specimens of figures 50—93 were coated with ammonium chloride with exception of figures 90 and 91.

PLATE 1

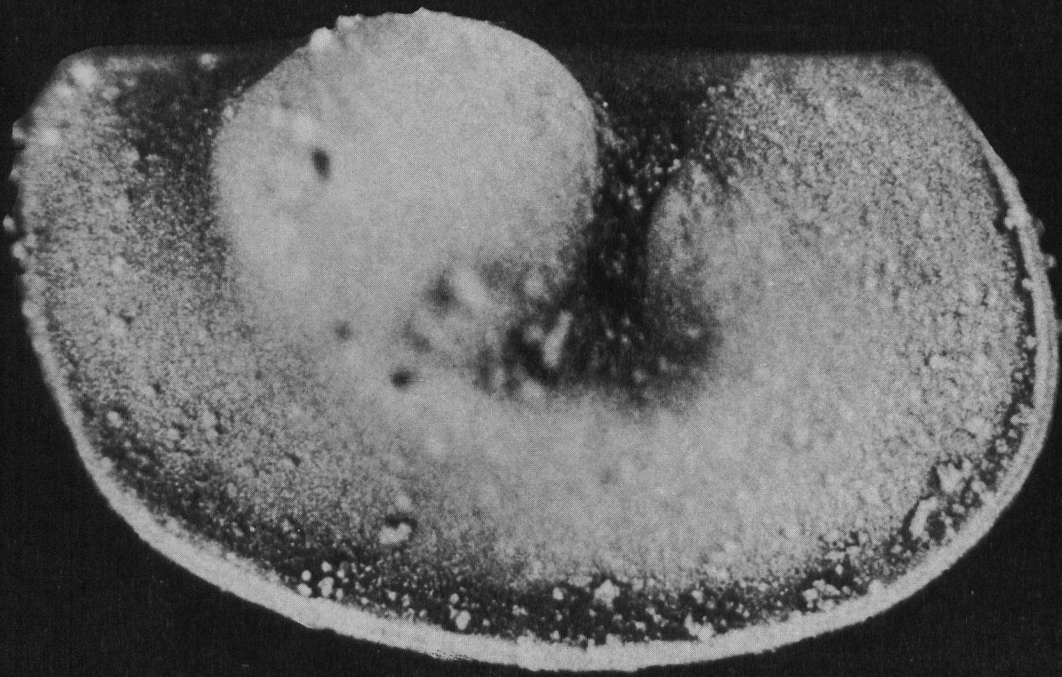
Fig. 50—51: *Hollinella camoni* nov. spec. (135×)

Fig. 50. RV of adult male specimen. Re20-7.

Fig. 51. RV of adult female specimen. Re20-8.



50



51

PLATE 2

Fig. 52—56: *Hollinella camoni* nov. spec. (75×)

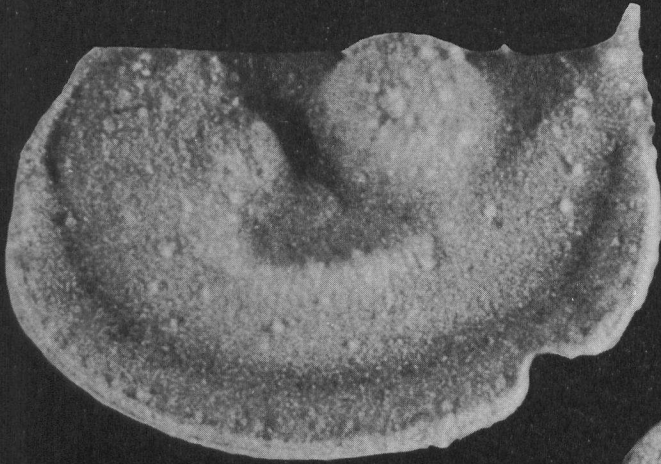
Fig. 52 LV of adult male specimen. Paratype. Re20-2.

Fig. 53. LV of adult female specimen. Holotype. Re20-1.

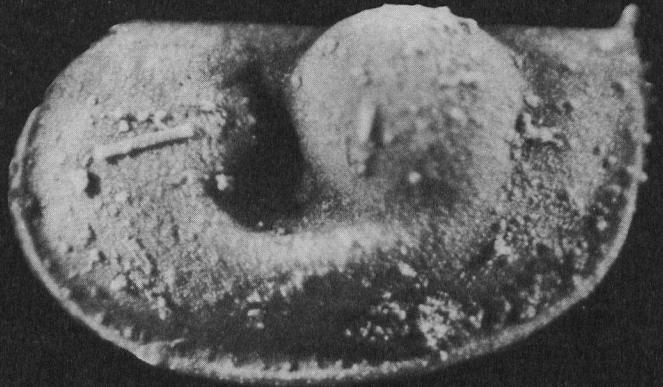
Fig. 54. LV of specimen of eighth instar. Re20-9.

Fig. 55. LV of specimen of seventh instar. Re20-10.

Fig. 56. RV of specimen of sixth instar. Re20-11.



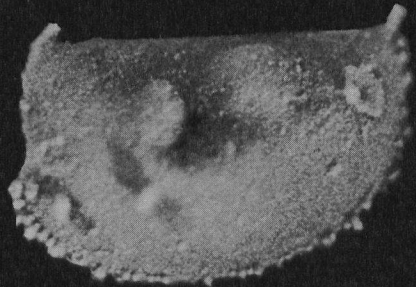
52



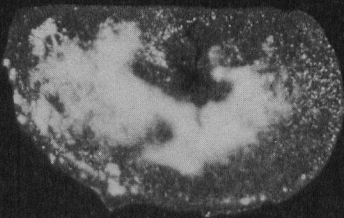
53



54



55



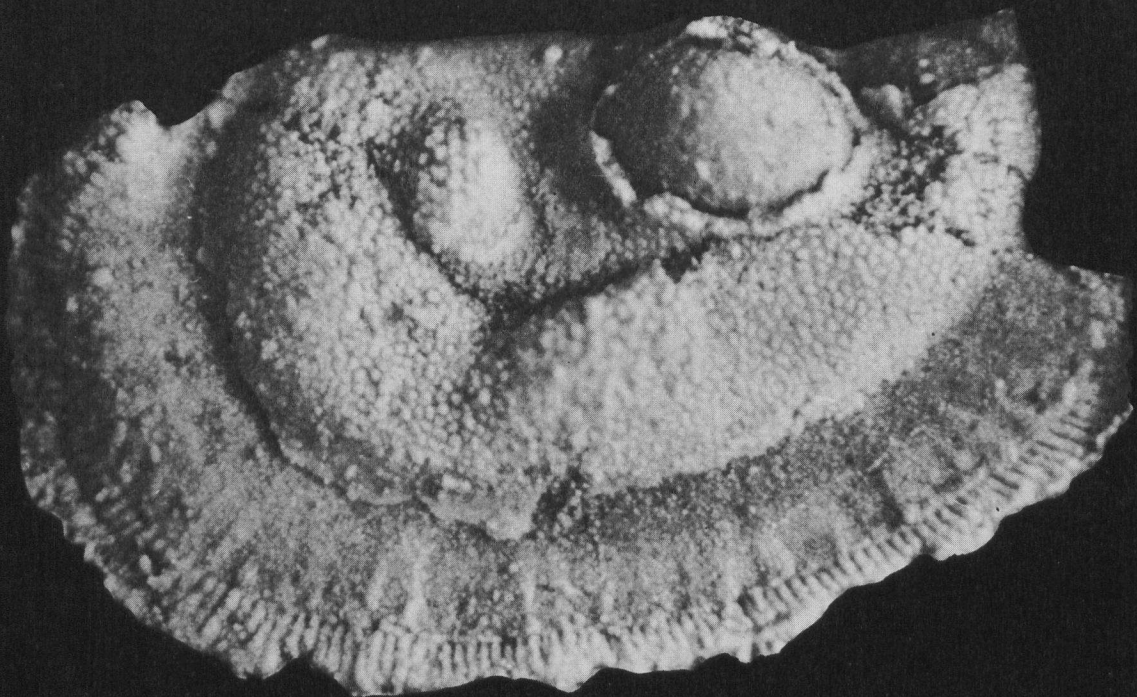
56

PLATE 3

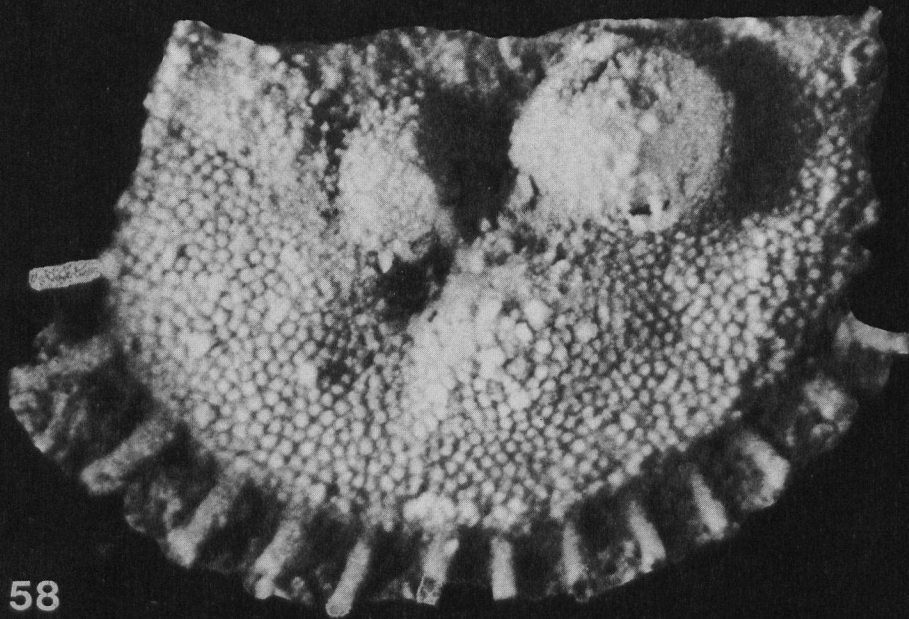
Fig. 57—58: *Hollinella cristinae* Bless, 1965 (110×)

Fig. 57. LV of adult specimen. Fr4-25.

Fig. 58. LV of specimen of eighth instar. Holotype. Fr4-19.



57



58

PLATE 4

Fig. 59—63: *Hollinella cristinae* Bless, 1965 (75×)

Fig. 59. LV of adult specimen. Fr13-1.

Fig. 60. LV of specimen of eighth instar. Fr13-2.

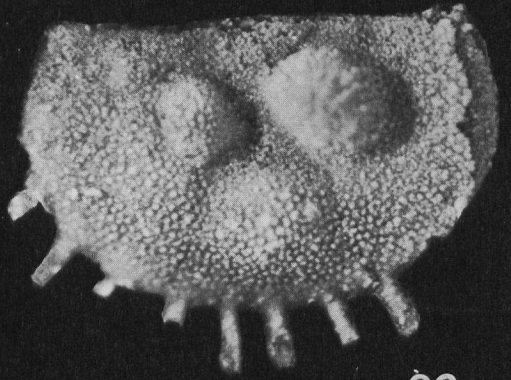
Fig. 61. LV of specimen of seventh instar. Fr4-37.

Fig. 62. LV of specimen of sixth instar. Fr105-13.

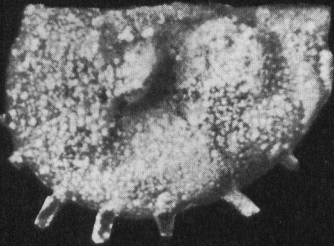
Fig. 63. LV of specimen of fifth instar. Fr116-1.



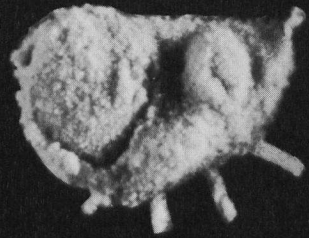
59



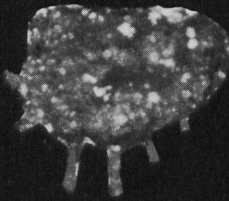
60



61



62



63

PLATE 5

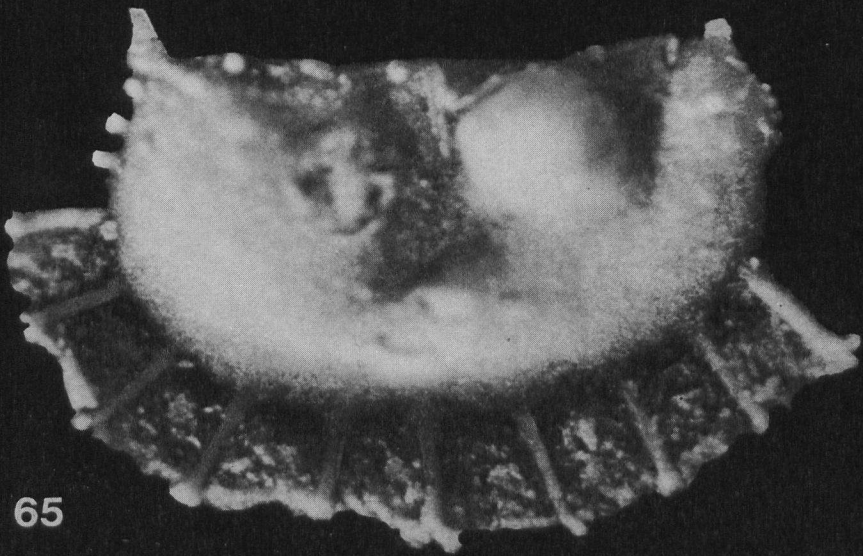
Fig. 64—65: *Hollinella hispanica* nov. spec. (100×)

Fig. 64. LV of adult specimen. Holotype. m1004a-1.

Fig. 65. LV of specimen of eighth instar. m1004a-7.



64



65

PLATE 6

Fig. 66—71: *Hollinella hispanica* nov. spec. (60×)

Fig. 66. LV of adult specimen. m1004a-8.

Fig. 67. LV of specimen of eighth instar. Paratype. m1004a-2.

Fig. 68. LV of specimen of seventh instar. Paratype. m1004a-3.

Fig. 69. LV of specimen of sixth instar. m1004a-10.

Fig. 70. RV of specimen of fifth instar. m1004a-11.

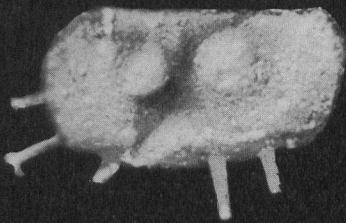
Fig. 71. LV of specimen of fourth instar. m1004a-12.



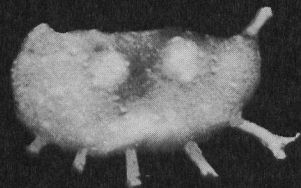
66



67



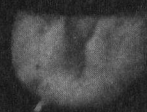
68



69



70



71

PLATE 7

(All figures 60×)

Fig. 72. *Hollinella micheli* nov. spec. LV of adult specimen. Holotype. Fe361-86.

Fig. 73. *Hollinella philomenae* Bless, 1967. RV of adult specimen. Holotype. La393a-29.

Fig. 74. *Hollinella philomenae* Bless, 1967. LV of specimen of eighth instar. La393b-14.

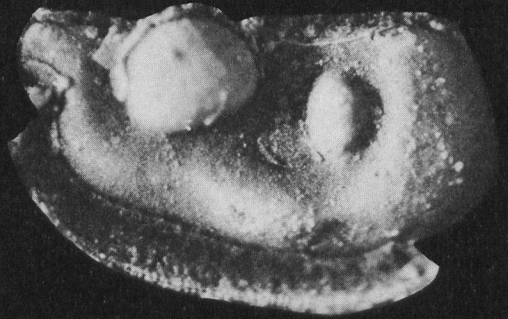
Fig. 75. *Hollinella* sp. RV of juvenile specimen. La412-4.

Fig. 76. *Hollinella* sp. LV of juvenile specimen. m1091-2.

Fig. 77. *Hollinella* sp. LV of juvenile specimen. m1091-1.



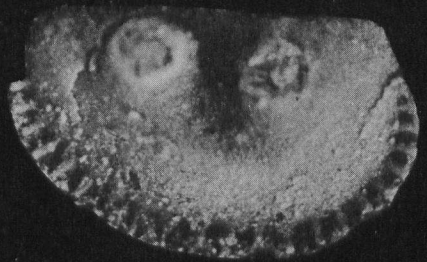
72



73



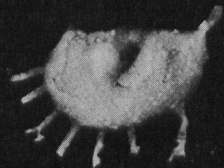
74



75



76



77

PLATE 8

Fig. 78—79: *Jordanites rawihinggili* Bless, 1967 (135×)

Fig. 78. RV of adult specimen. Fe361-91. Valve damaged by small boring, organisms (algae?, sponges?).

Fig. 79. LV of specimen of eighth instar. Holotype. Fe361-1.



78



79

PLATE 9

Fig. 80—85: *Jordanites rawihinggili* Bless, 1967 (75×)

Fig. 80. LV of adult specimen. Fe361-48.

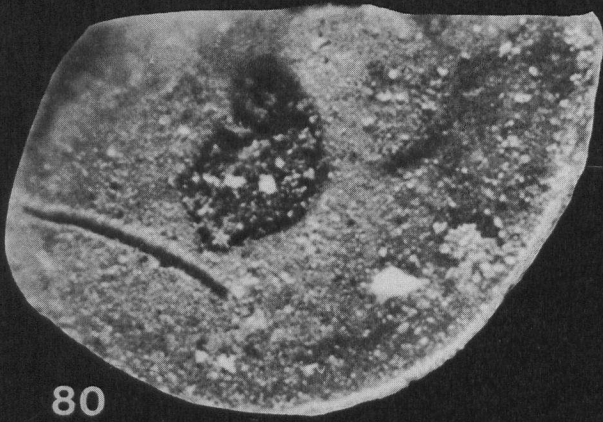
Fig. 81. LV of specimen of eighth instar. Holotype. Fe361-1.

Fig. 82. LV of specimen of seventh instar. Fe361-107.

Fig. 83. RV of specimen of sixth instar. Fe361-87.

Fig. 84. RV of specimen of fifth instar. Fe361-88.

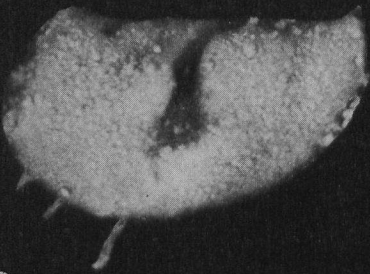
Fig. 85. LV of specimen of fourth instar. Fe361-89.



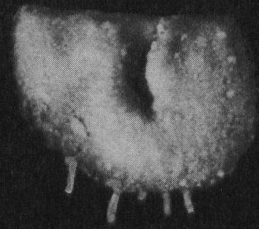
80



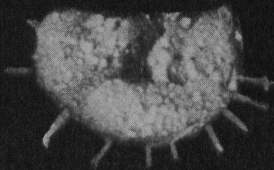
81



82



83



84



84

PLATE 10

Fig. 86—89: *Jordanites cristinae* (Bless, 1967) (75×)

Fig. 86. LV of adult specimen. La412-8.

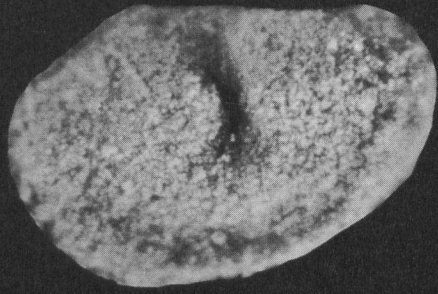
Fig. 87. RV of adult specimen. Paratype. Fr100-13b.

Fig. 88. LV of adult specimen. Fr100-13a.

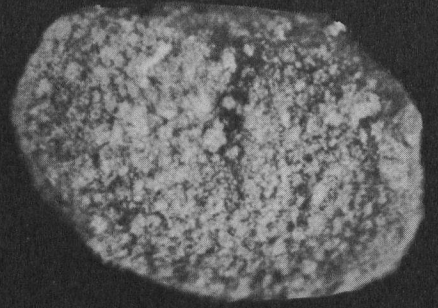
Fig. 89. LV of adult specimen. m1091-23.

Fig. 90—93: *Jordanites* sp. A. Fe455-35. (75×)

Left view (figs. 90 & 92) and right view (figs. 91 & 93)
of complete carapace.



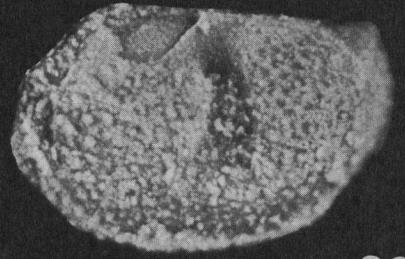
86



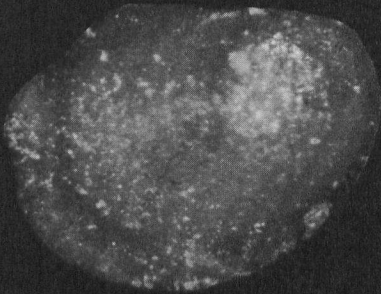
87



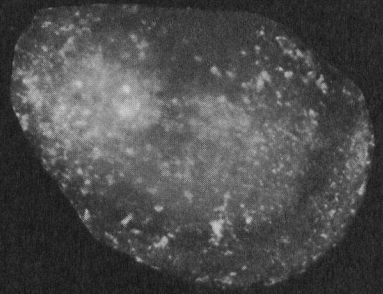
88



89



90



91



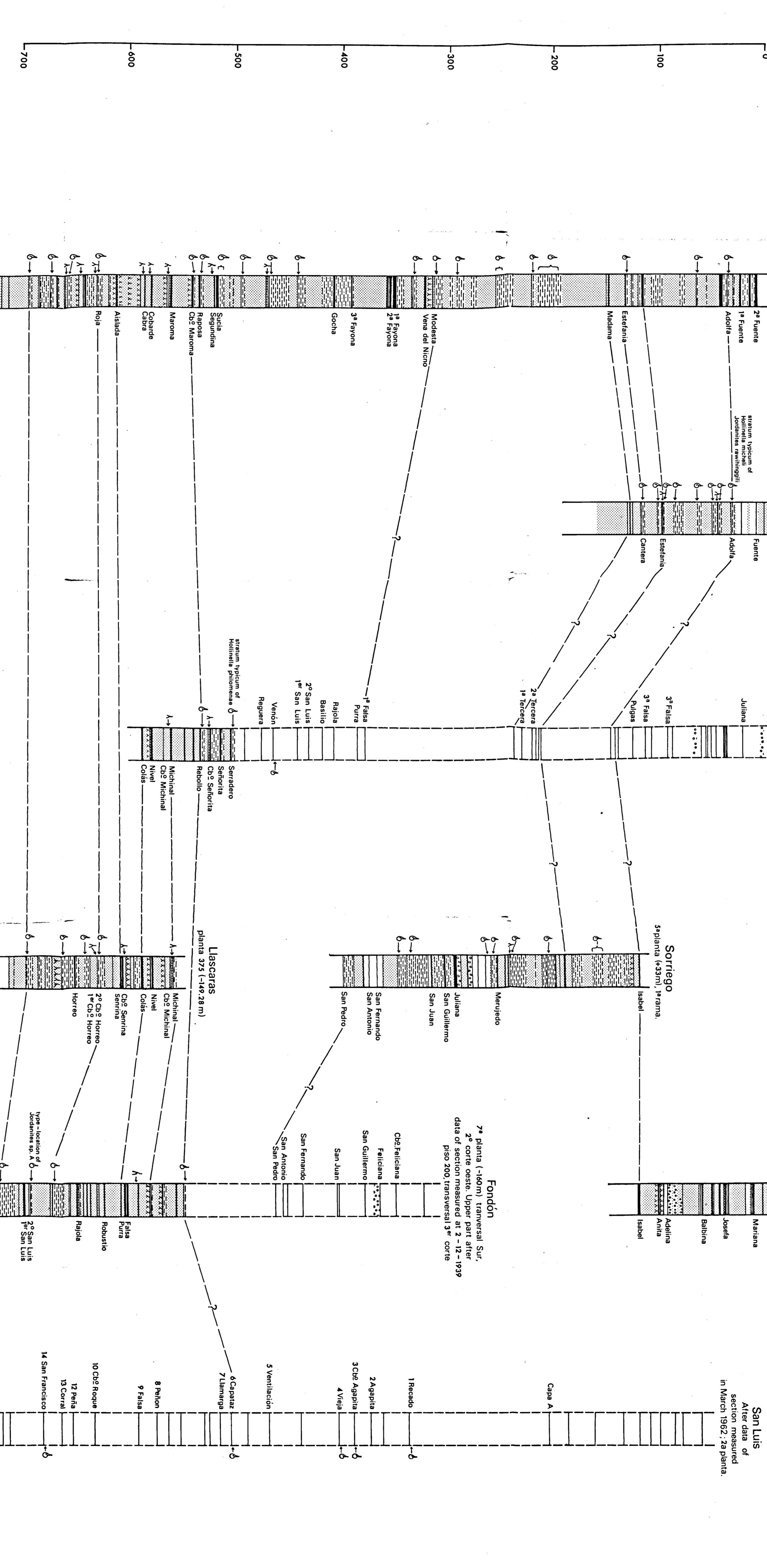
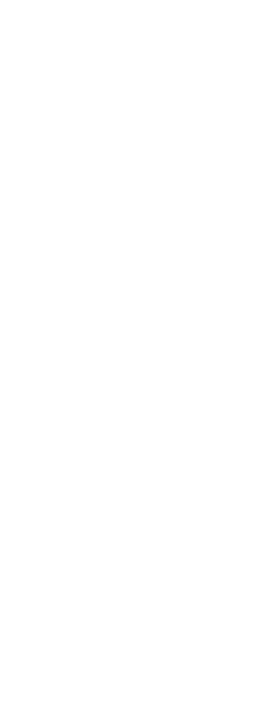
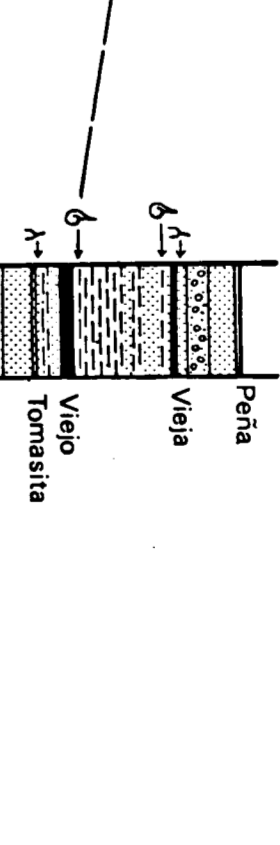
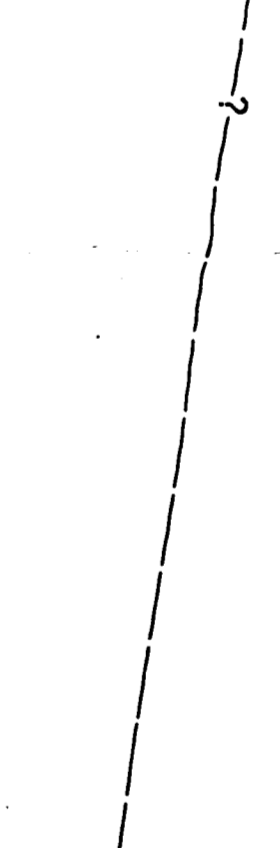
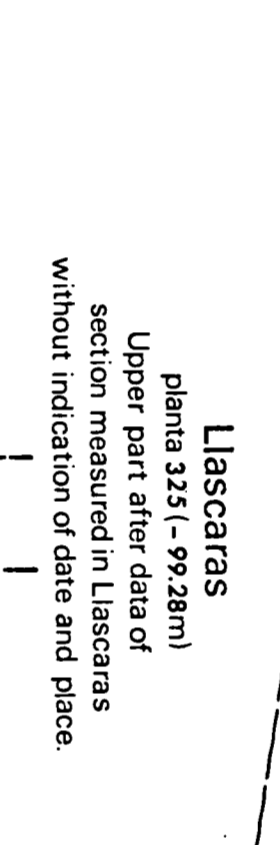
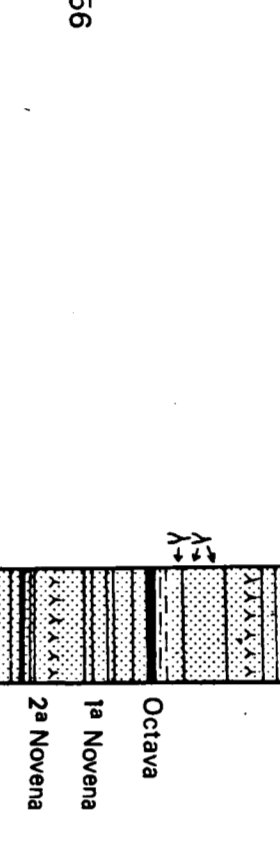
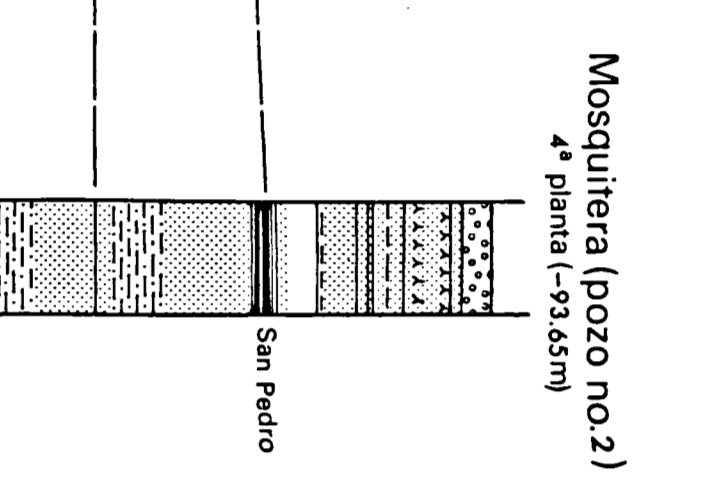
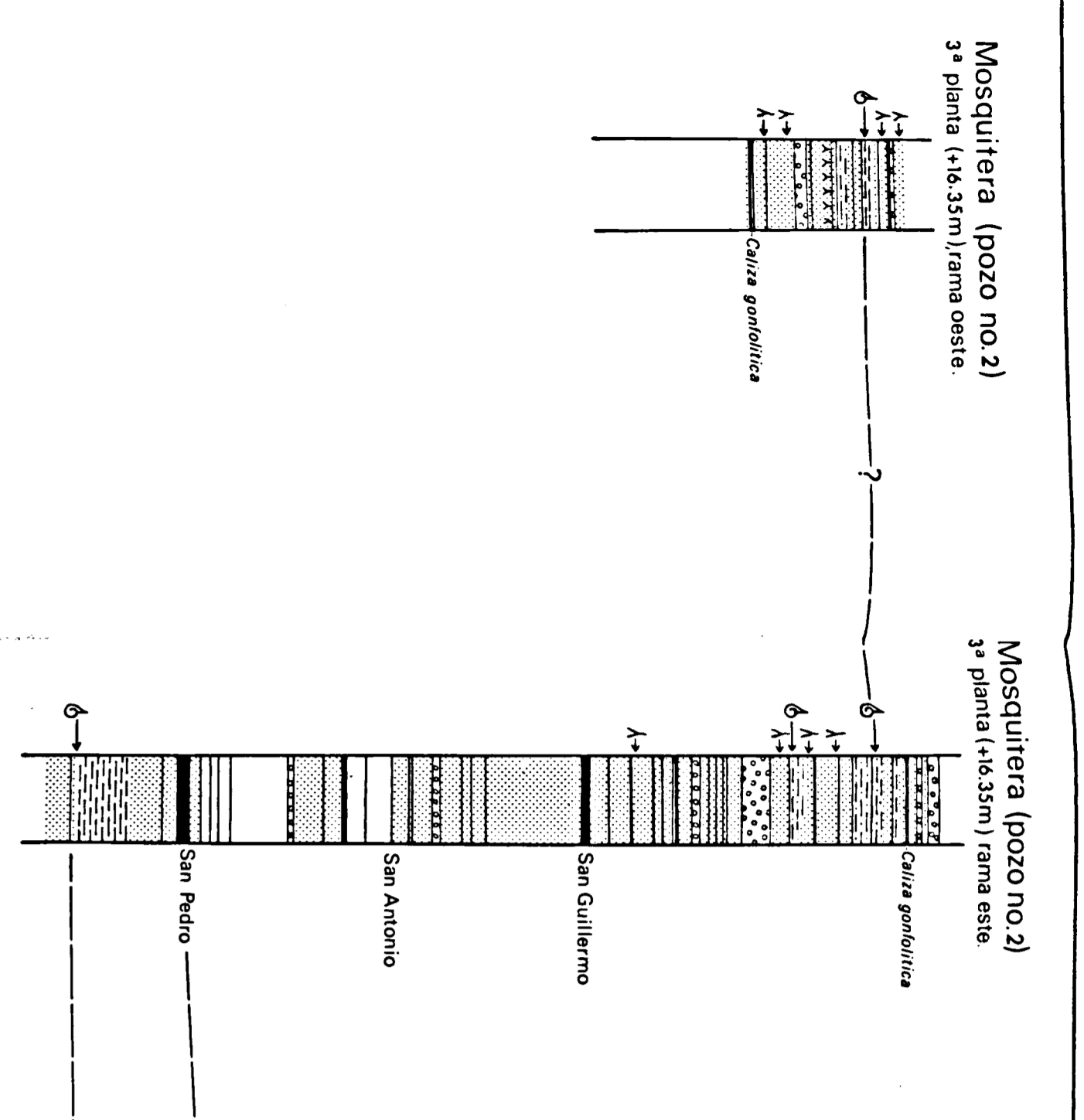
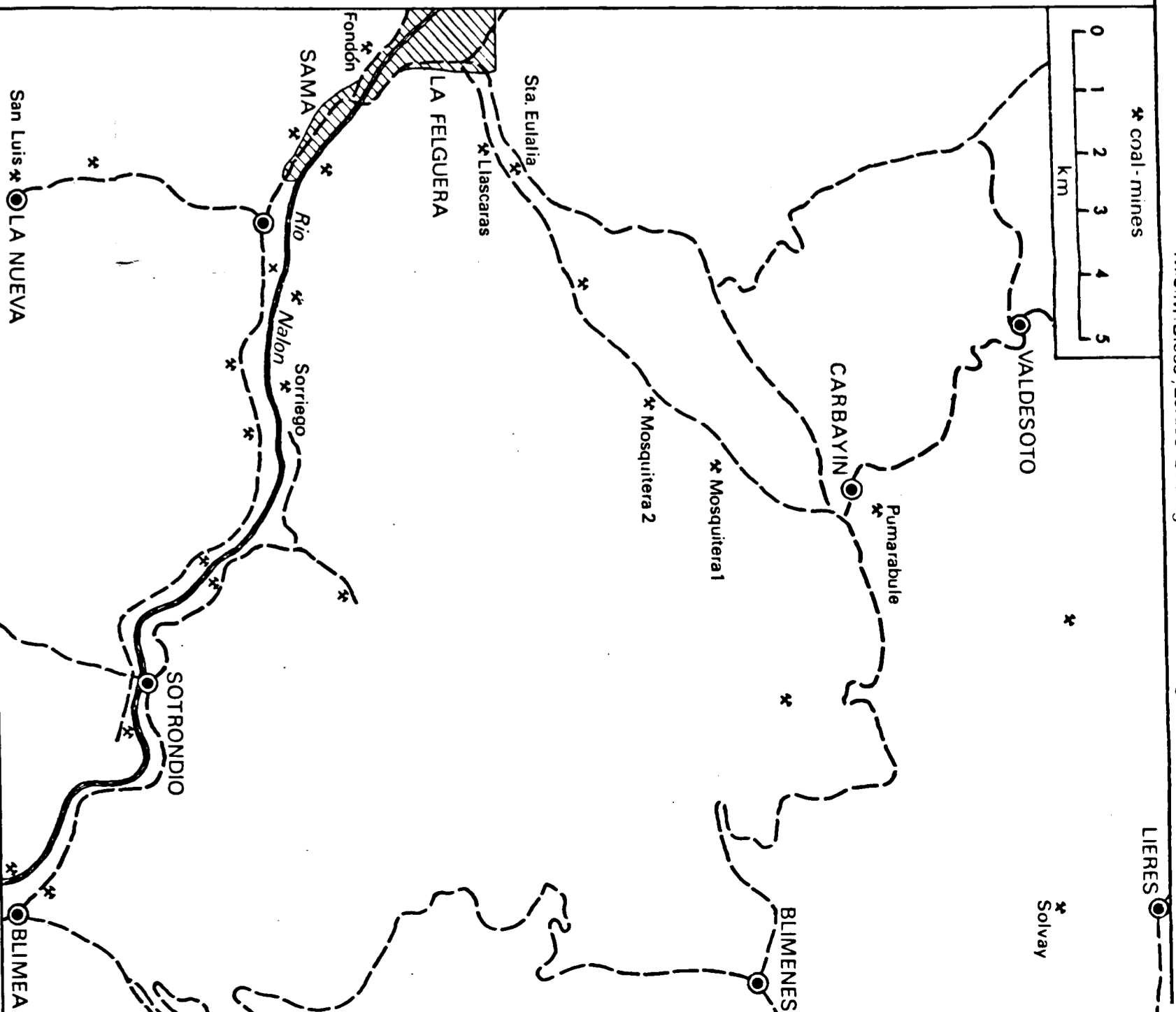
92



93

LEGEND

- section after data of mining engineers
- section measured during summer 1927
- Coal seam (workable or unworkable)
- Angulita (workable coal seam)
- Bed of other environment (beds of shales)
- Environment unknown (partial bedded arenaceous shales)
- Marine or brackish environment (arenaceous shales, shales)
- Caliza gmelina
- Compensite
- Limestone
- Section not exposed
- level with small coal seams or rootlets



SONVY
 After data of section measured at 21-2-1927, planta 300, oeste, transversal núm. 1

