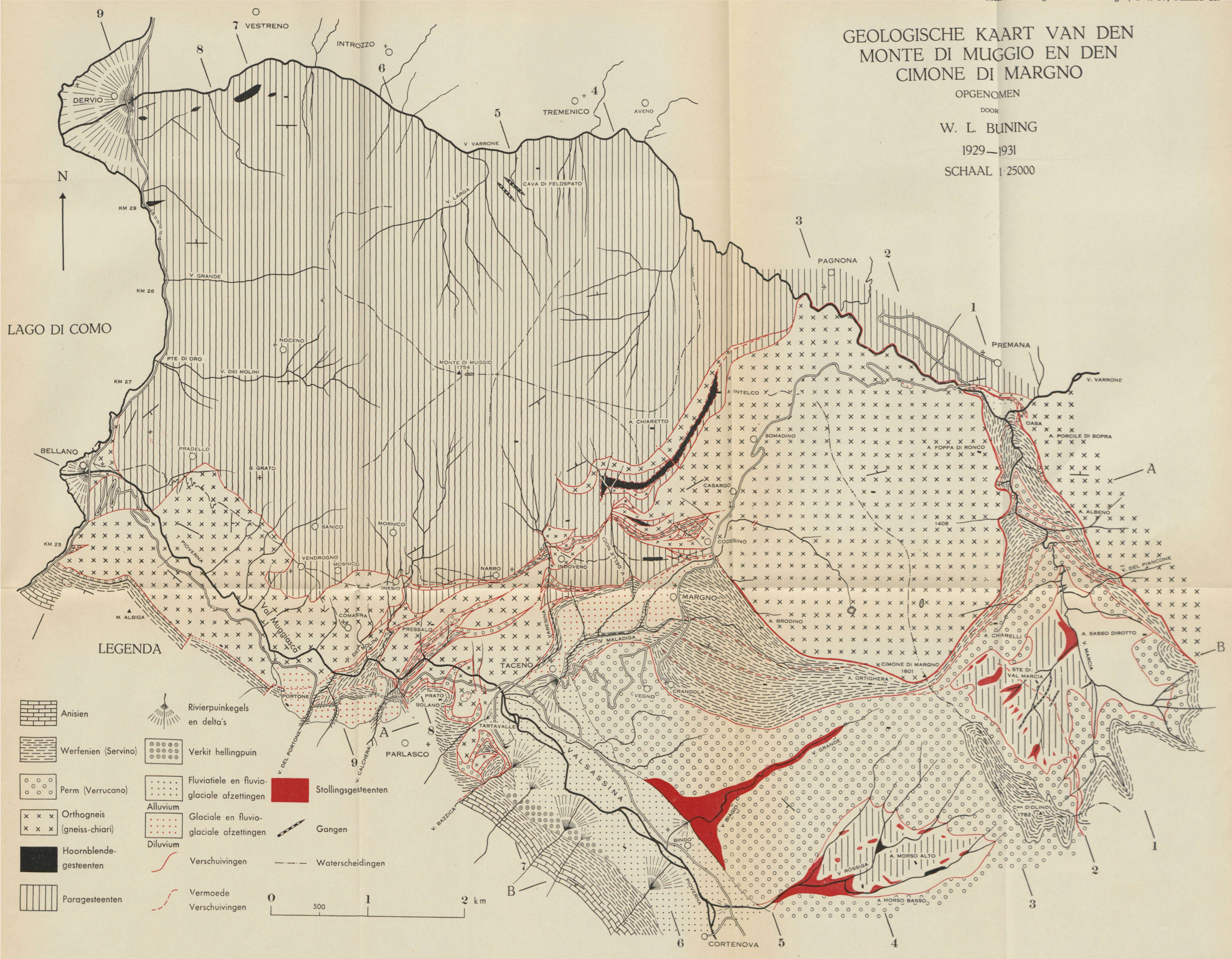
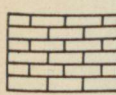
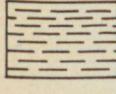
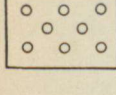
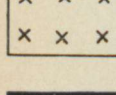
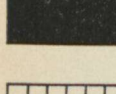
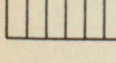

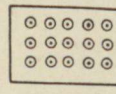
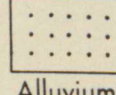




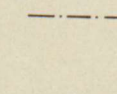
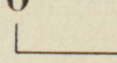
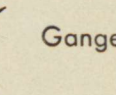


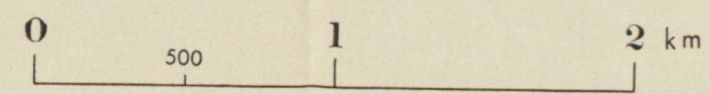
GEOLOGISCHE KAART VAN DEN MONTE DI MUGGIO EN DEN CIMONE DI MARGNO

OPGENOMEN
DOOR
W. L. BUNING
1929-1931
SCHAAL 1:25000



LEGENDA

-  Anisien
-  Werfenien (Servino)
-  Perm (Verrucano)
-  Orthogneis (gneiss-chiari)
-  Hoornblende-gesteenten
-  Parageesteenten
-  Rivierpunkegels en delta's
-  Verkit hellingpuin
-  Fluviatiele en fluvio-glaciale afzettingen
-  Alluvium
-  Diluvium
-  Stollingsgesteenten
-  Gangen
-  Verschuivingen
-  Vermoede Verschuivingen
-  Waterscheidingen



GEOLOGISCHE PROFIELEN DOOR DEN MONTE DI MUGGIO EN DEN CIMONE DI MARGNO

ONTWORPEN

DOOR

W. L. BUNING

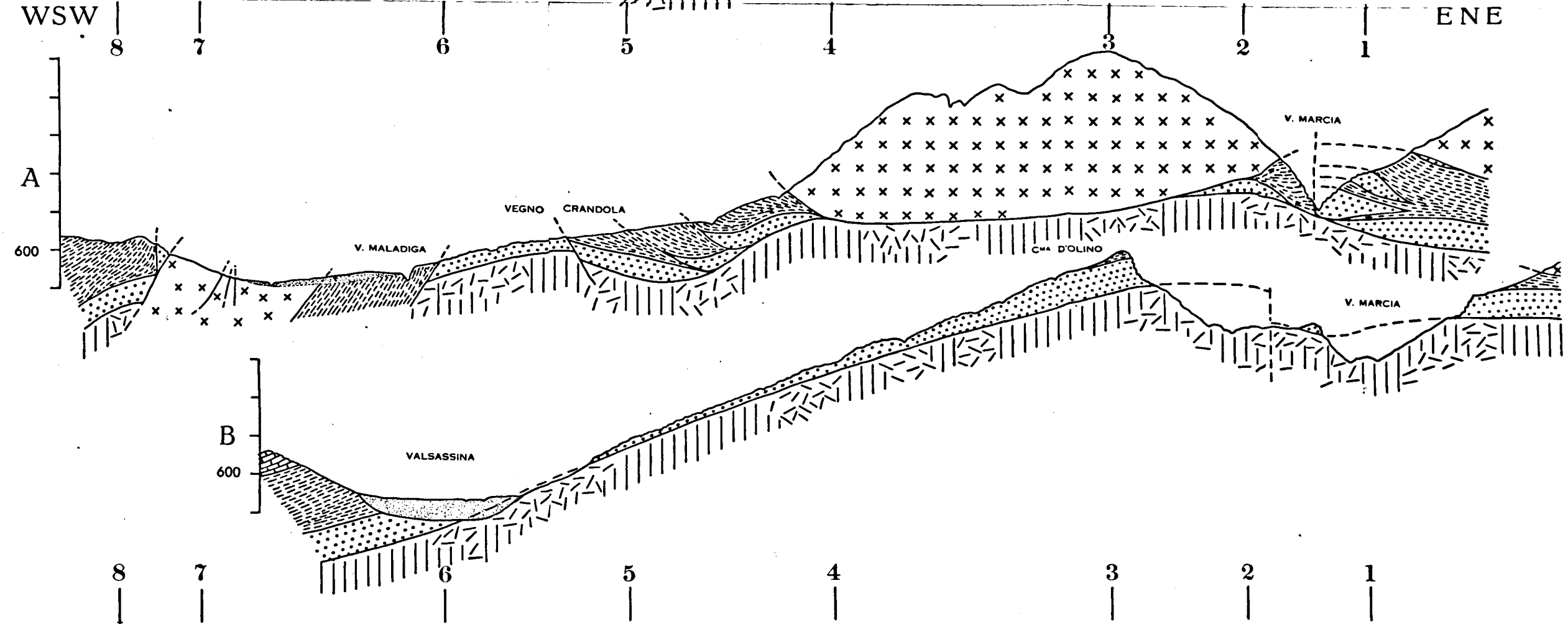
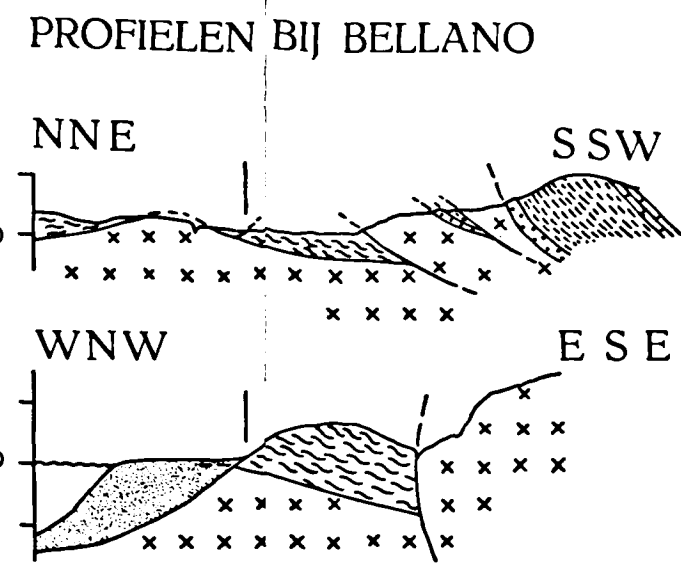
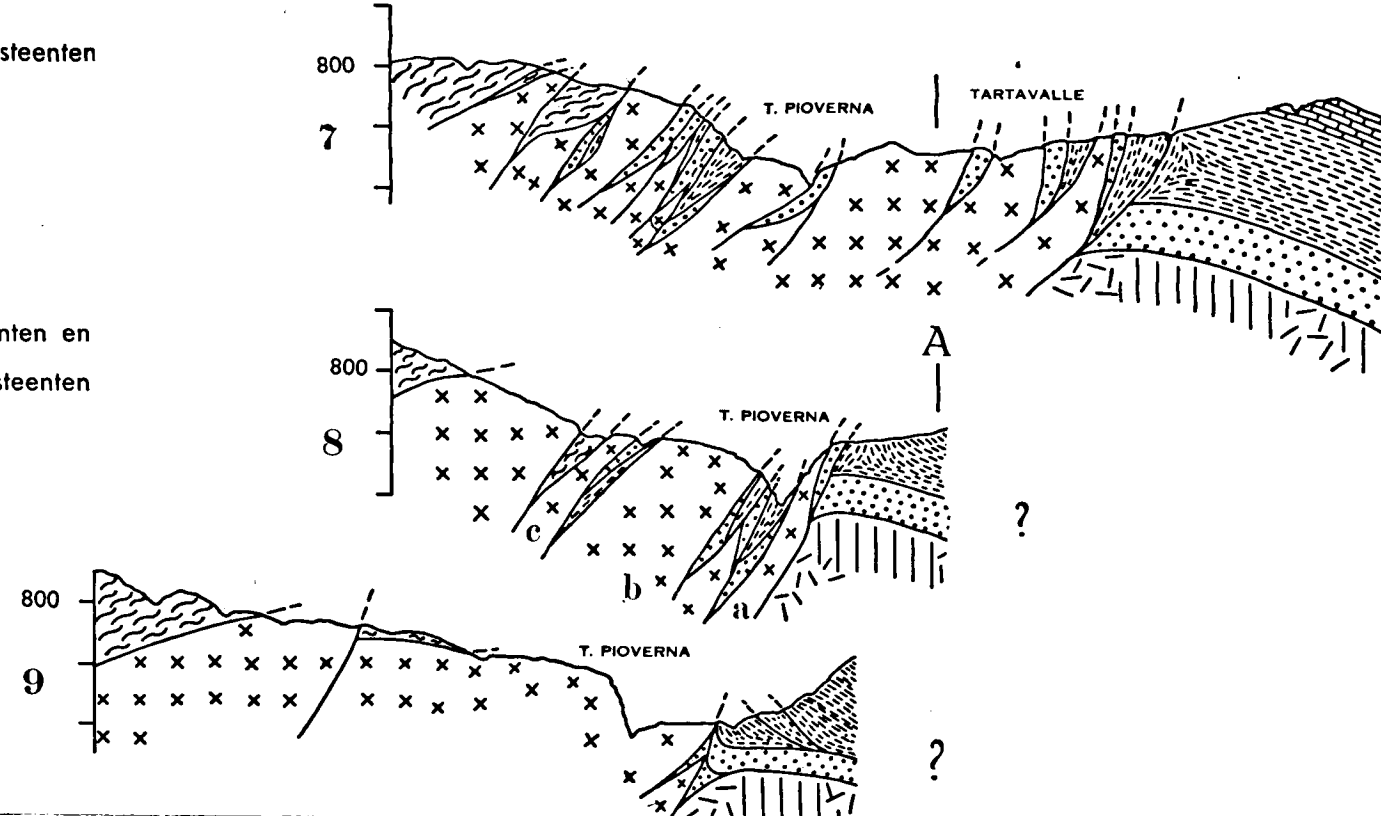
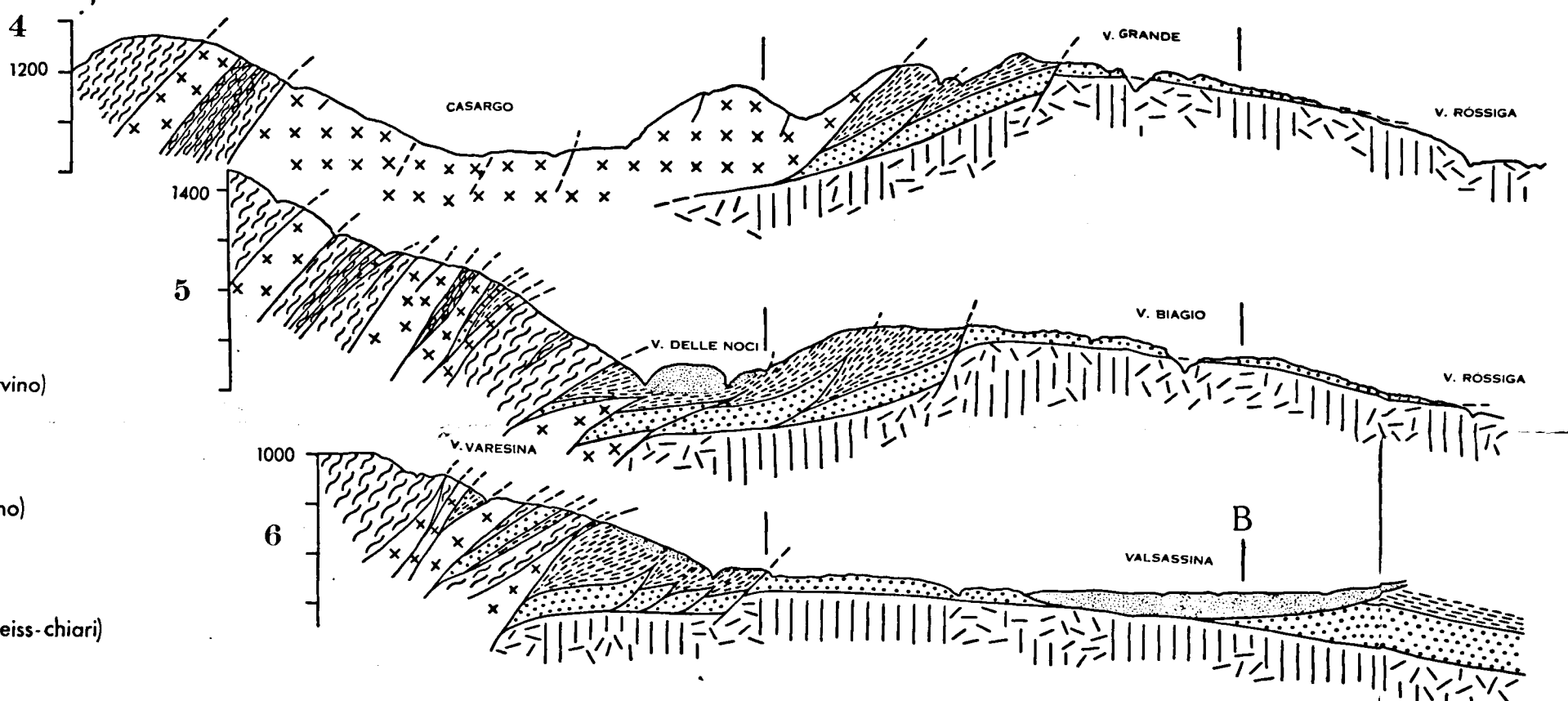
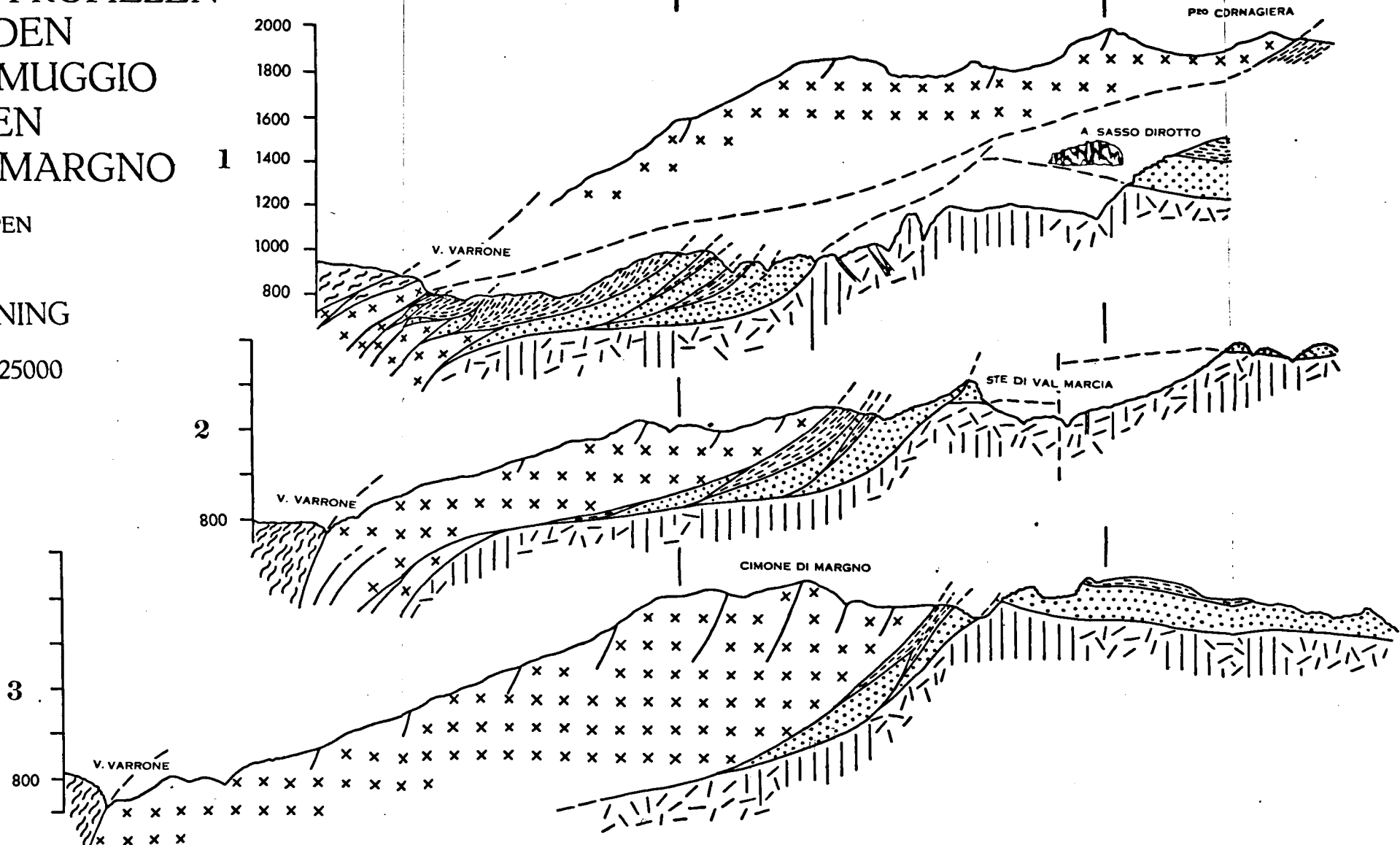
SCHAAL 1:25000



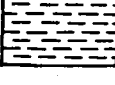

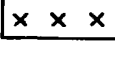
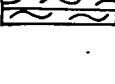
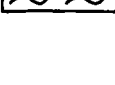



NNW

A

B

SSE



- LEGENDA**
-  Kwartair
 -  Anisien
 -  Werfénien (Servino)
 -  Perm (Verrucano)
 -  Orthogneis (gneiss-chiari)
 -  Hoornblendegesteenten
 -  Paragesteenten
 -  Stollingsgesteenten en metamorfe gesteenten
 -  Verschuivingen
 -  Gangen