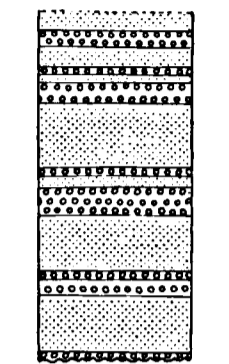


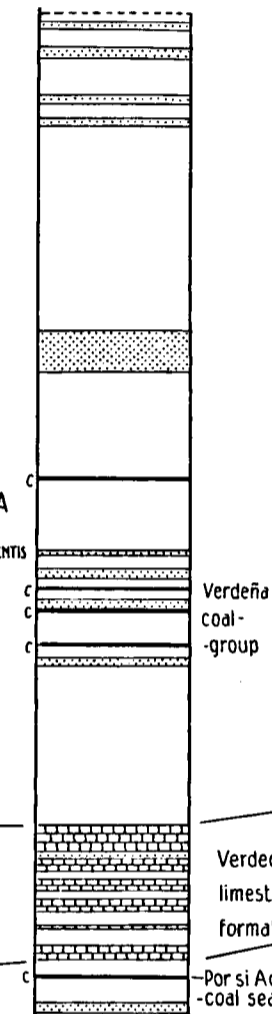
ENCLOSURE 2

LOS CERVUNALES PERMO-TRIASSIC



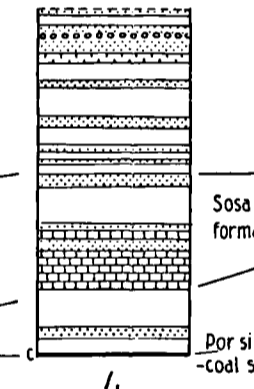
12

VERDEÑA ANTICLINE



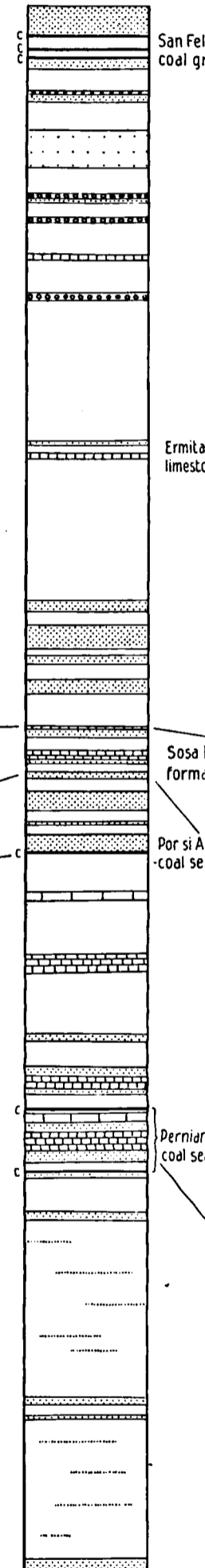
3

VERDEÑA SUNCLINE CASTILLERILLA VALLEY



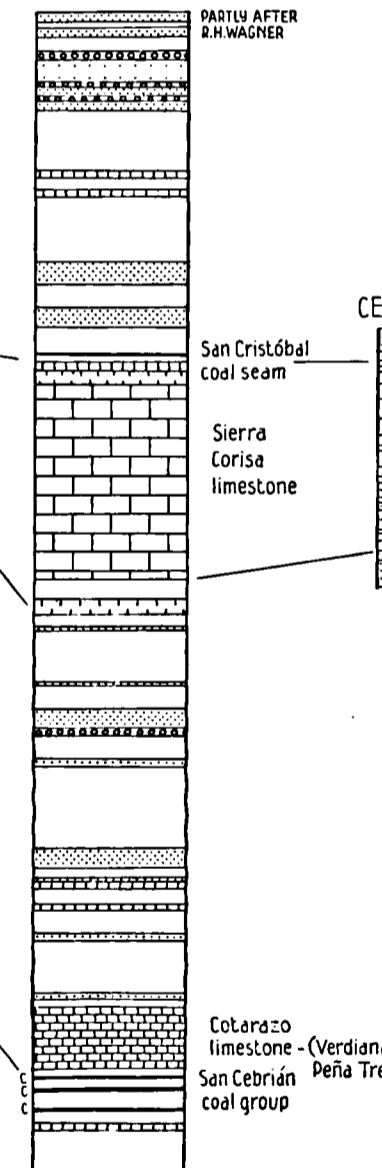
4

CELADA ANTICLINE CELADA-SAN FELICES



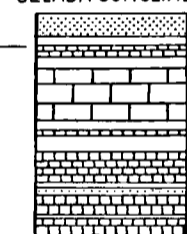
5

EAST FLANK SIERRA CORISA SUNCLINE VALLEY OF HERRERUELA



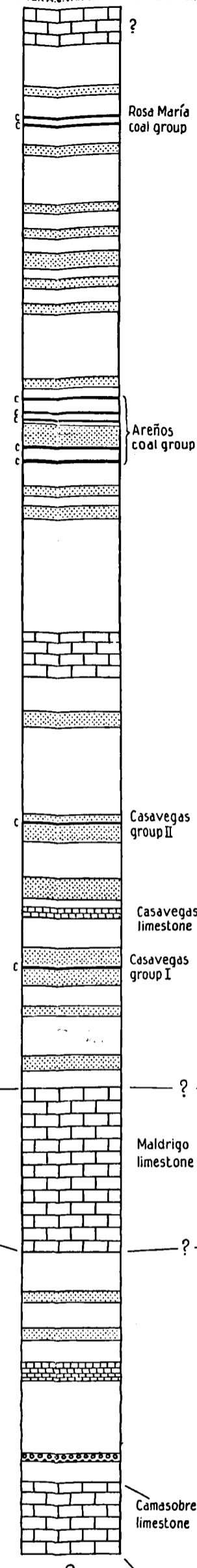
6

CELADA SUNCLINE



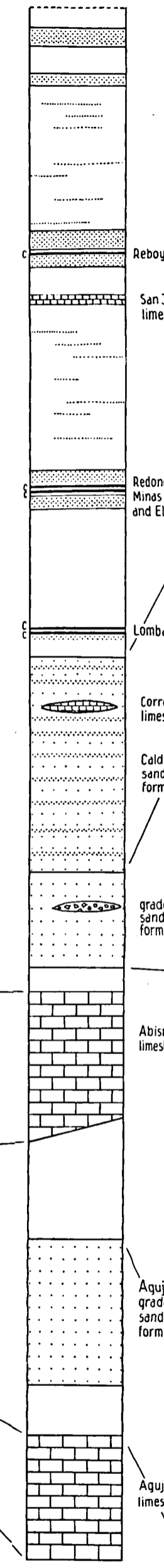
7

CASAVEGAS SUNCLINE AFTER A. C. VAN GINKEL AND A. BREIMER



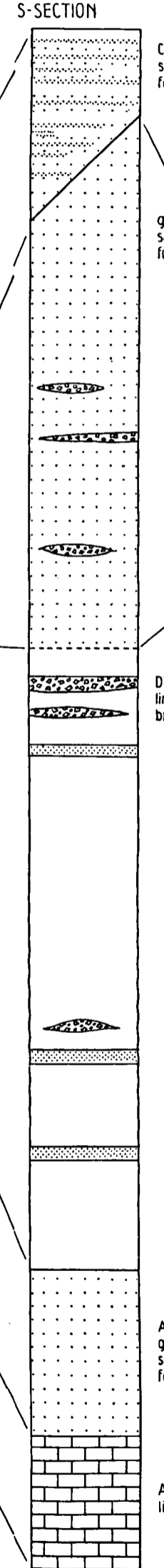
8

REDONDO SUNCLINE N-SECTION



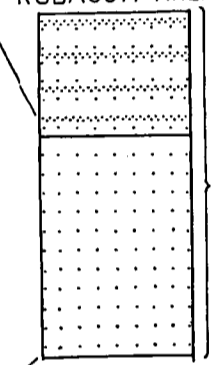
9

REDONDO SUNCLINE S-SECTION



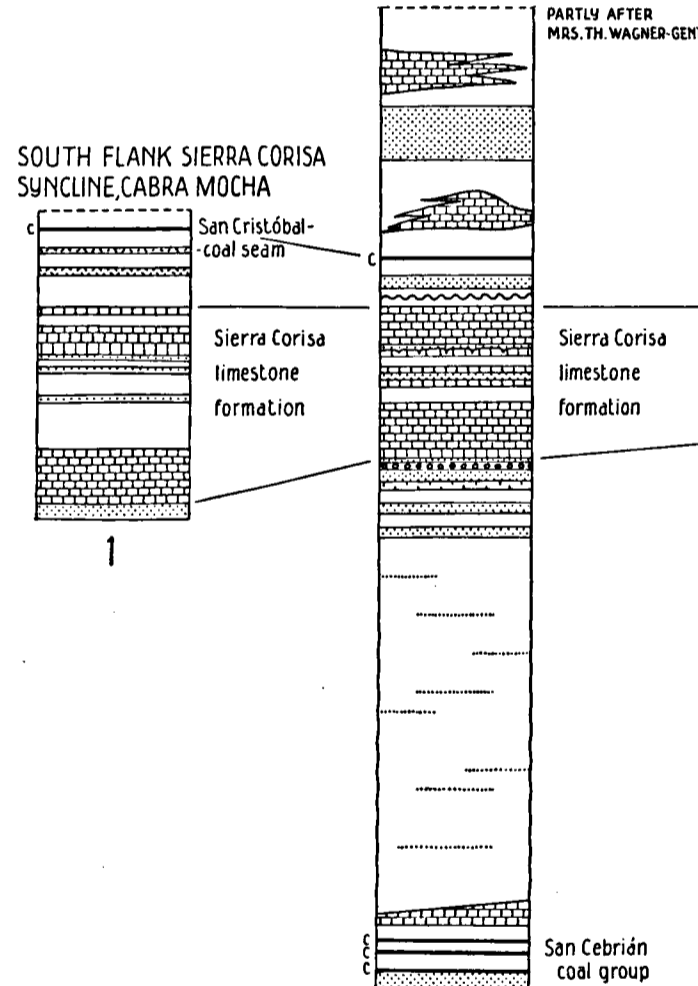
10

RUBAGÓN-AREA



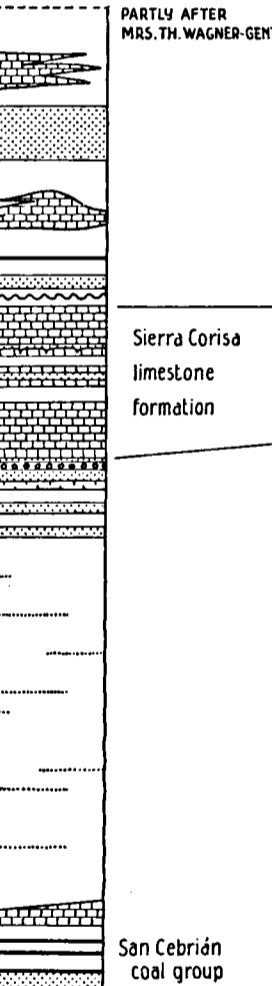
11

SOUTH FLANK SIERRA CORISA SUNCLINE, SAN CEBRIÁN DE MUDA



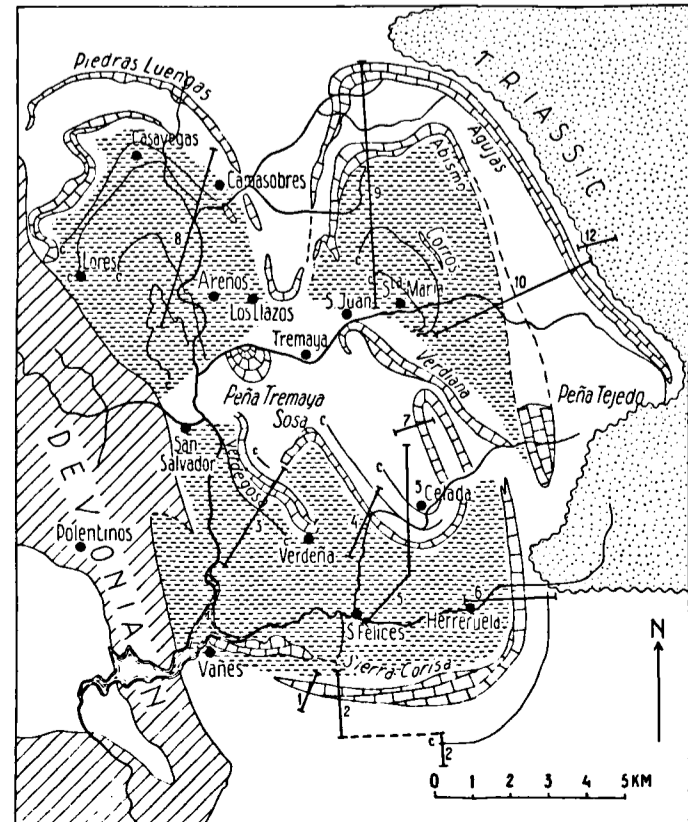
1

SOUTH FLANK SIERRA CORISA SUNCLINE, CABRA MOCHA



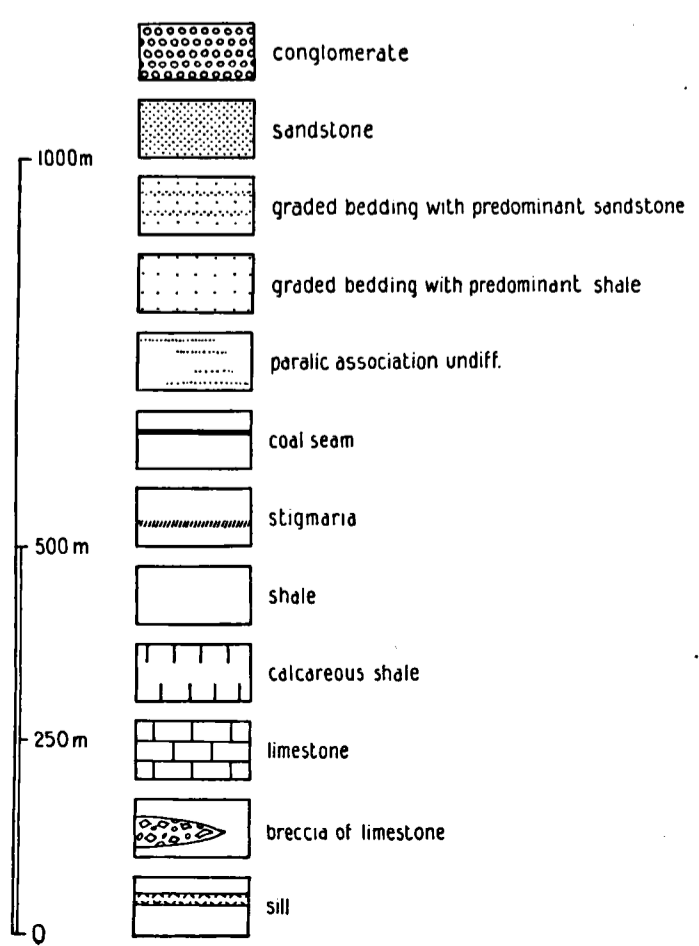
2

LOCATION OF STRATIGRAPHIC SECTIONS



Partly after De Sitter (1957); Time-stratigraphic boundary inferred from data from Bremer van Ginkel van Hoefaken and Wagner

Upper Westphalian Stephanian A



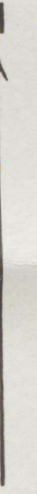
LITHOSTRATIGRAPHIC MAP OF THE UPPER PISUERGA VALLEYS

NORTHERN PALENCIA
SPAIN

by M.H.NEDERLOF
(Survey 1953-'58)

Scale 1:25.000

2 km



LEGEND

- Alluvial
- △ Scree
- ▣ Large blocks of Permo-Triassic conglomerate
- ◻ Old scree
- ◻ Terrace gravel
- ◻ Moraine material, undifferentiated
- Triassic
- Carboniferous**
- PARALIC ASSOCIATION**
- Conglomerate with sandy matrix
- Protoquartzite
- Orthoquartzite within Molasse association
- Shale, mudstone and sandstone, undifferentiated
- Biostromal and impure limestone
- TURBIDITE ASSOCIATION**
- Graded bedding with predominance of sandstones
- Graded bedding with predominance of shales
- Sandstone-shale alternation
- Muddy limestone breccia and pebbly mudstone
- ORTHOQUARTZITE-CARBONATE ASSOCIATION**
- Orthoquartzite
- Shale, mudstone and sandstone, undifferentiated
- Pure limestone, massive or bedded
- Massive (biohermal?) development of limestone
- Coal seam
- Intrusive rocks
- D Dolomitization of limestone
- M Mineralization on fault
- Fault
- ~ Zigzag folds
- ↖ Dip and strike of strata
- Current direction from current bedding and current ripplemark
- Current direction from sole markings
- Mine
- Cave

