

Fig. 1. Outcrop map of the Upper Devonian. The position of the cross-sections (Figs. 3 and 4) is indicated.

Viséan	anchoralis-letus Zone		Alba Formation
Tournaisian			Ermita Formation
Famennian	costalis Zone		
Frasnian	Pitriangularis Zone	Fueyo Member	Nocedo Formation
	gigas Zone	B	
	Asymmetrical Zone	A	Portilla Formation

Fig. 2. Biostratigraphical correlations of the Upper Devonian deposits in León; in the second column from the left conodont zones are indicated.

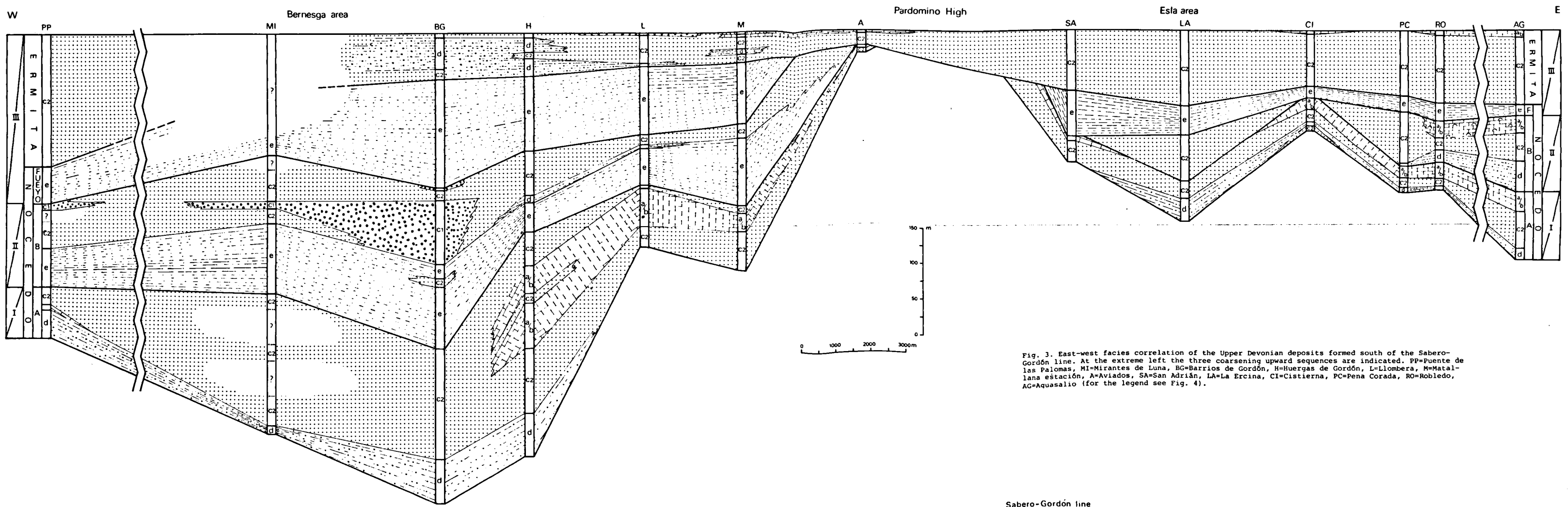


Fig. 3. East-west facies correlation of the Upper Devonian deposits formed south of the Sabero-Gordón line. At the extreme left the three coarsening upward sequences are indicated. PP=Puente de los Palones, MI=Mirantes de Luna, H=Huergas de Gordón, LA=La Ermita, CI=Cistierna, PC=Pena Corada, RO=Robledo, AC=Aquesalio (for the legend see Fig. 4).

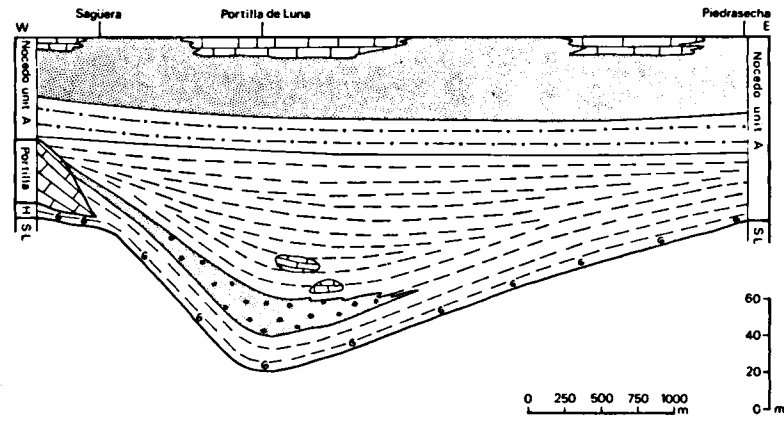


Fig. 5. East-west facies correlation of the Middle and Upper Devonian deposits in the southern Alba syncline (for a legend see Fig. 4). Further west the thickness of the Huergas (H) and the Portilla Formation increases considerably.

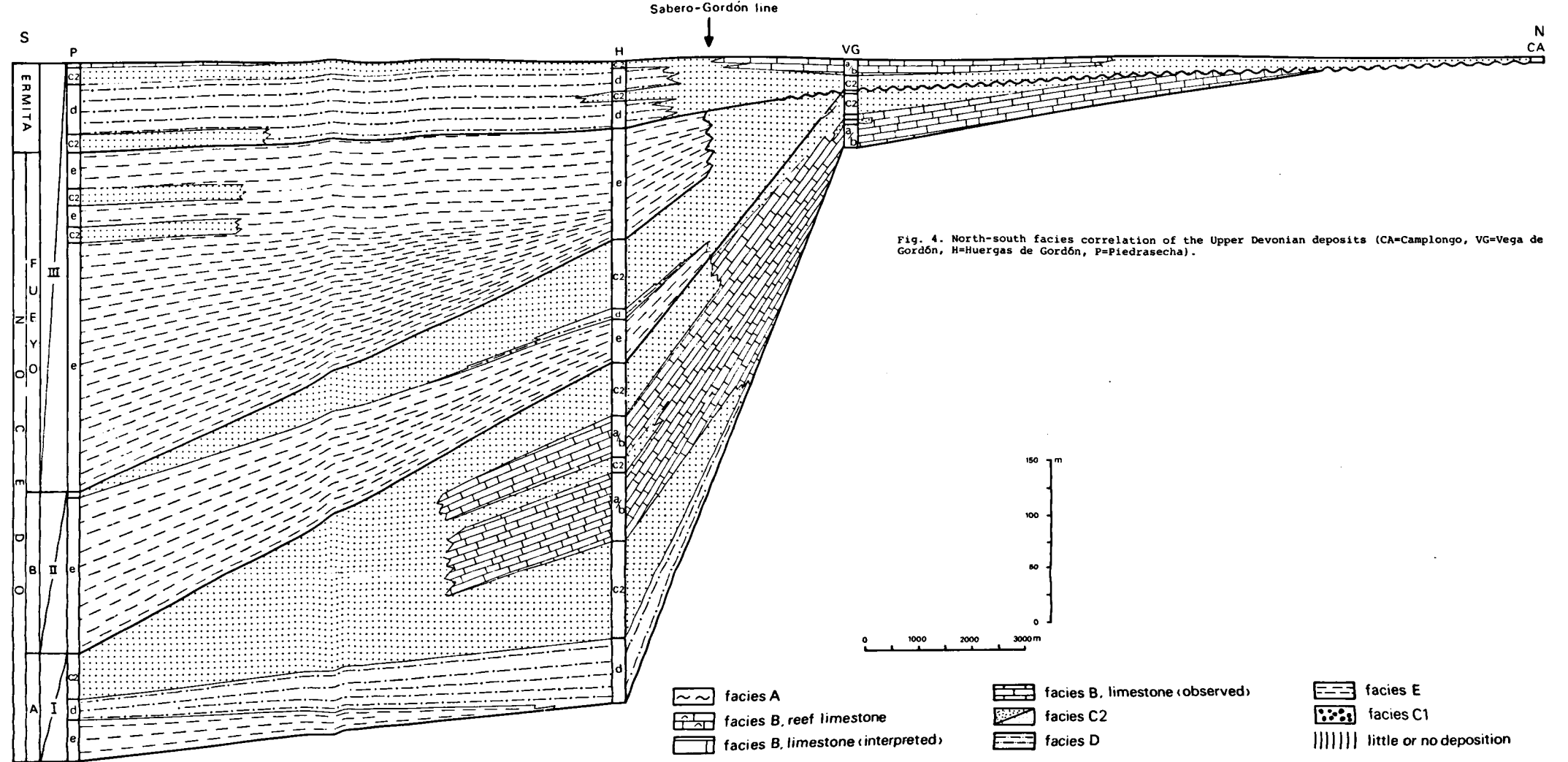


Fig. 4. North-south facies correlation of the Upper Devonian deposits (CA=Campiango, VG=Vega de Gordón, H=Huergas de Gordón, P=Piedrasacha).

facies A
 facies B, reef limestone
 facies B, limestone (interpreted)
 facies B, limestone (observed)
 facies C2
 facies D
 facies E
 facies C1
 little or no deposition
 erosion

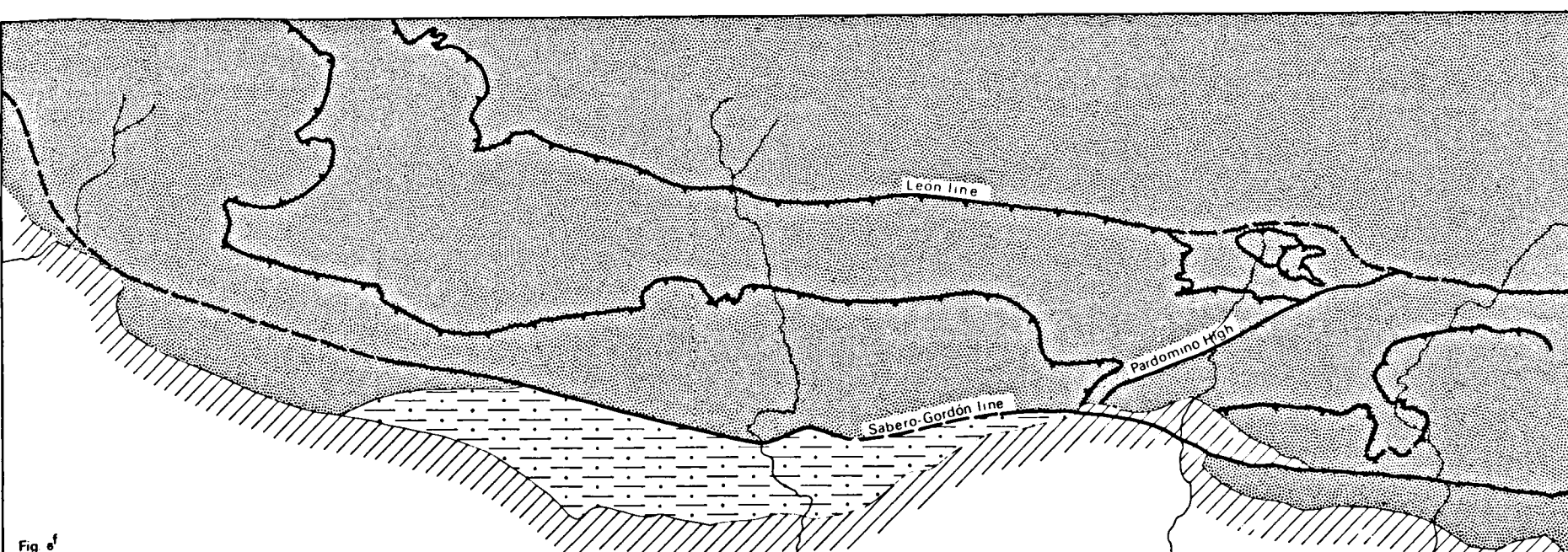
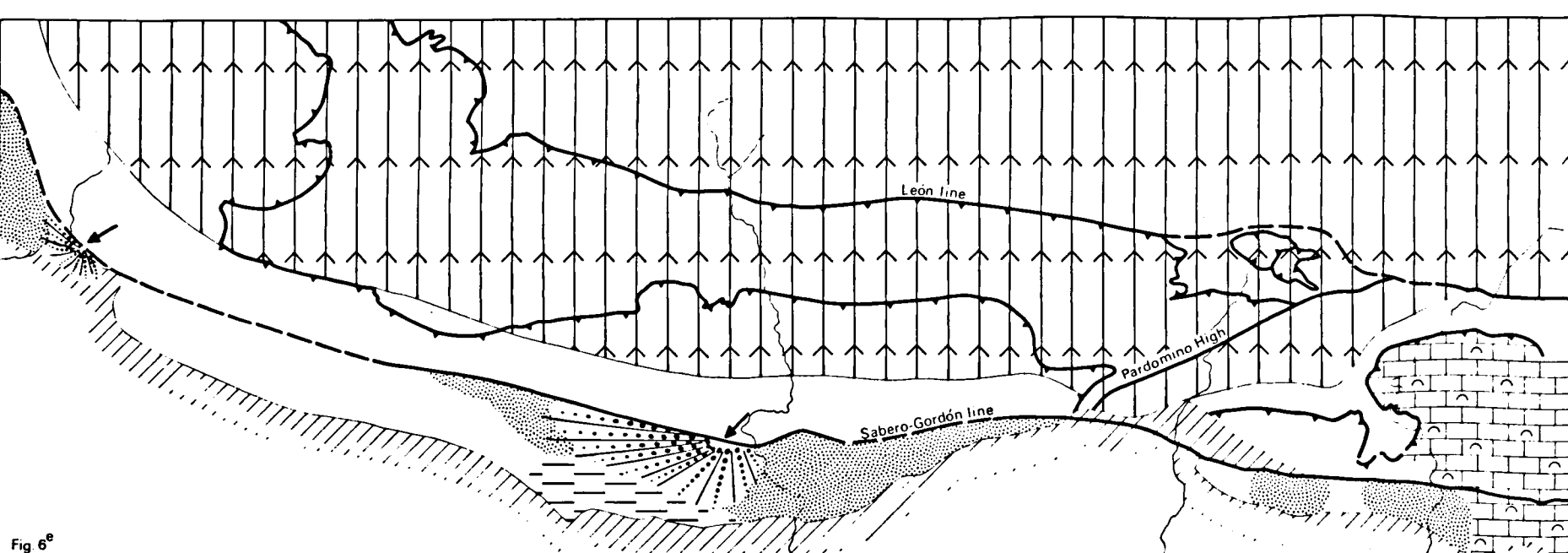
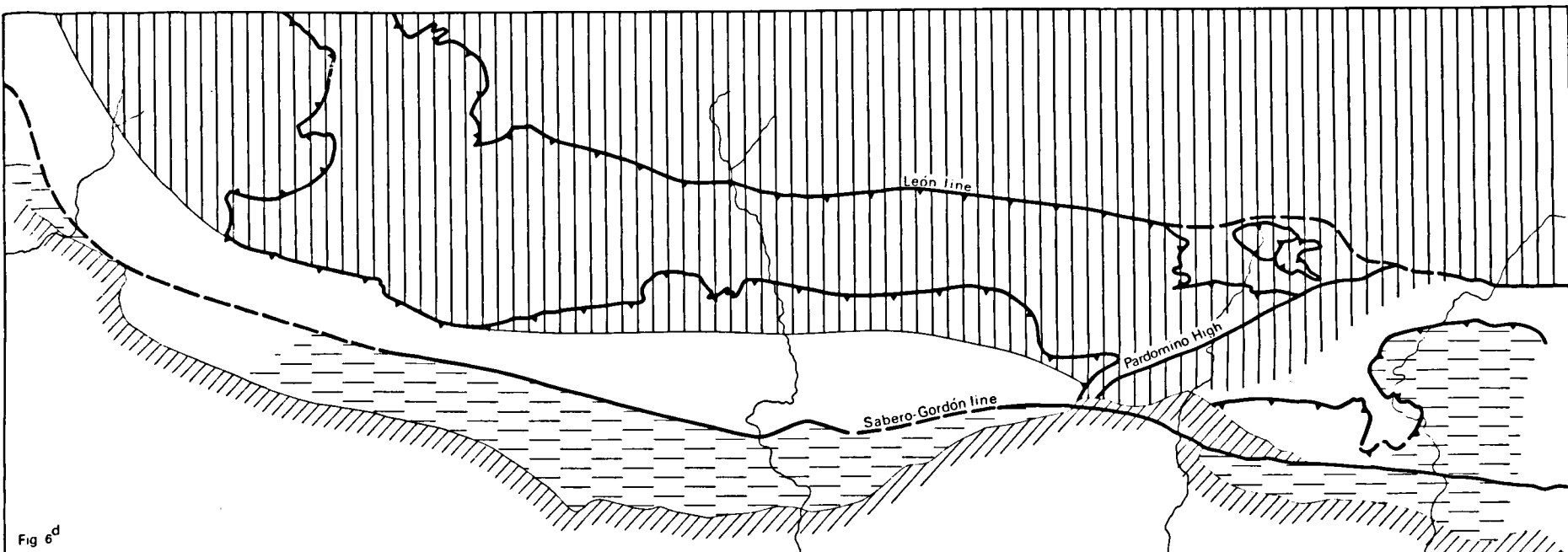
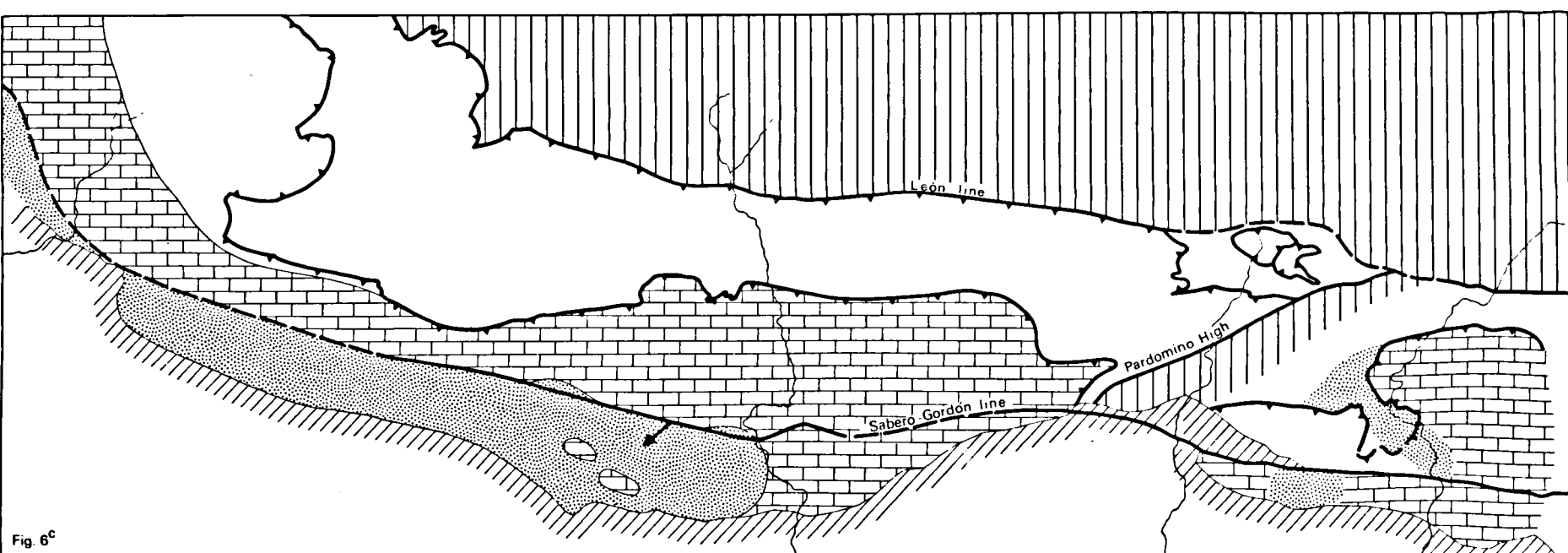
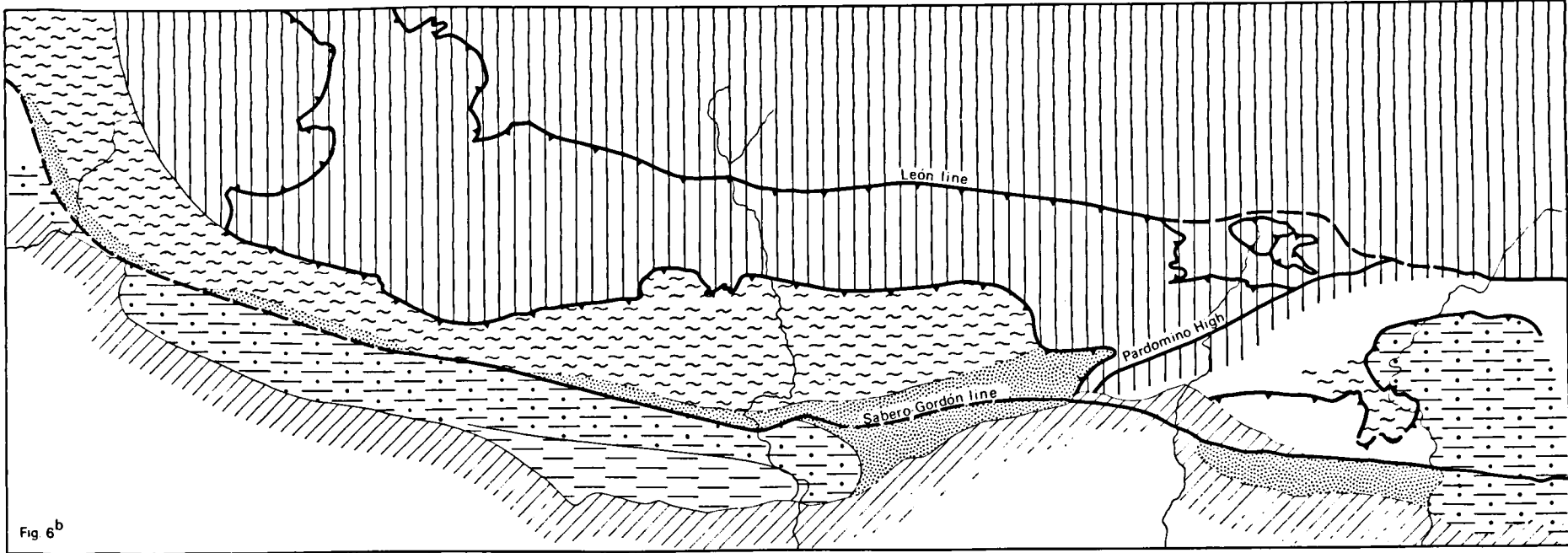
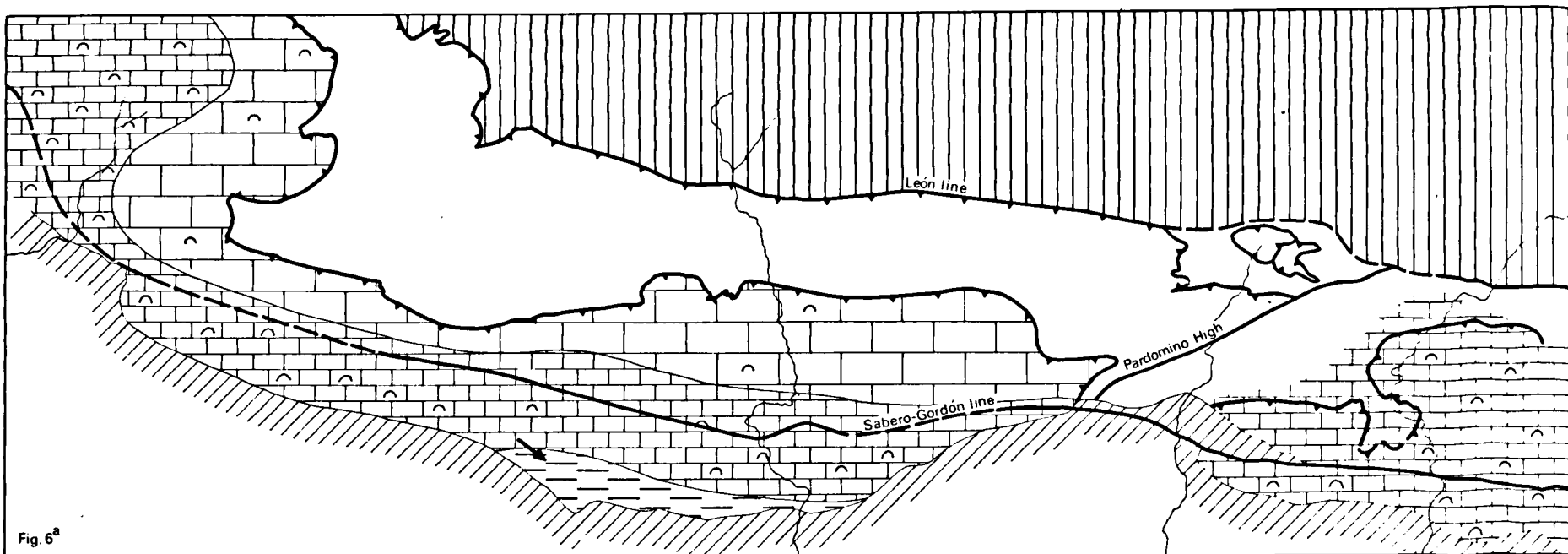


Fig. 6. Facies maps for: (a) the Upper Famennian-cristatus Zone, (b) the base of unit A of the Nocedo Formation (Lowermost to Lower asymmetric Zone), (c) the Middle asymmetric Zone, (d) the base of unit B of the Nocedo Formation, (e) the top of unit B of the Nocedo Formation (late Famennian), (f) the upper part of the Ermita Formation.