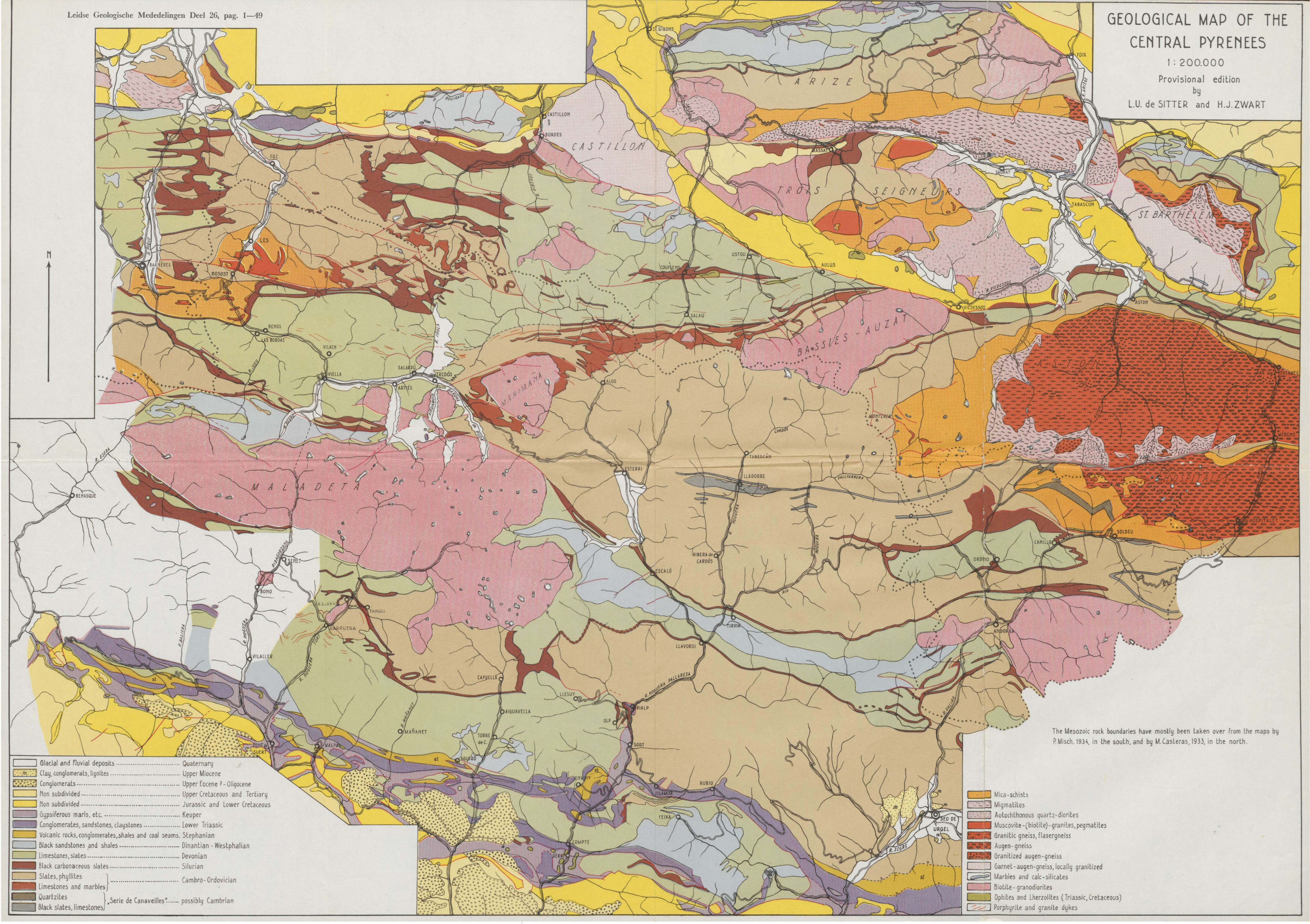


GEOLOGICAL MAP OF THE CENTRAL PYRENEES

1:200.000

Provisional edition
by

L.U. de SITTER and H.J. ZWART



	Glacial and fluvial deposits	Quaternary
	Clay, conglomerates, lignites	Upper Miocene
	Conglomerates	Upper Eocene ? - Oligocene
	Non subdivided	Upper Cretaceous and Tertiary
	Non subdivided	Jurassic and Lower Cretaceous
	Gypsiferous marls, etc.	Keuper
	Conglomerates, sandstones, claystones	Lower Triassic
	Volcanic rocks, conglomerates, shales and coal seams	Stephanian
	Black sandstones and shales	Dinantian - Westphalian
	Limestones, slates	Devonian
	Black carbonaceous slates	Silurian
	Slates, phyllites	Cambro-Ordovician
	Limestones and marbles	
	Quartzites	
	Black slates, limestones	
	„Serie de Canaveilles“..... possibly Cambrian	

	Mica-schists
	Migmatites
	Autochthonous quartz-diorites
	Muscovite - (biotite) - granites, pegmatites
	Granitic gneiss, flaser gneiss
	Augen-gneiss
	Granitized augen-gneiss
	Garnet-augen-gneiss, locally granitized
	Marbles and calc-silicates
	Biotite-granodiorites
	Ophites and Lherzolithes (Triassic, Cretaceous)
	Porphyrite and granite dykes

The Mesozoic rock boundaries have mostly been taken over from the maps by P. Misch, 1934, in the south, and by M. Casteras, 1933, in the north.