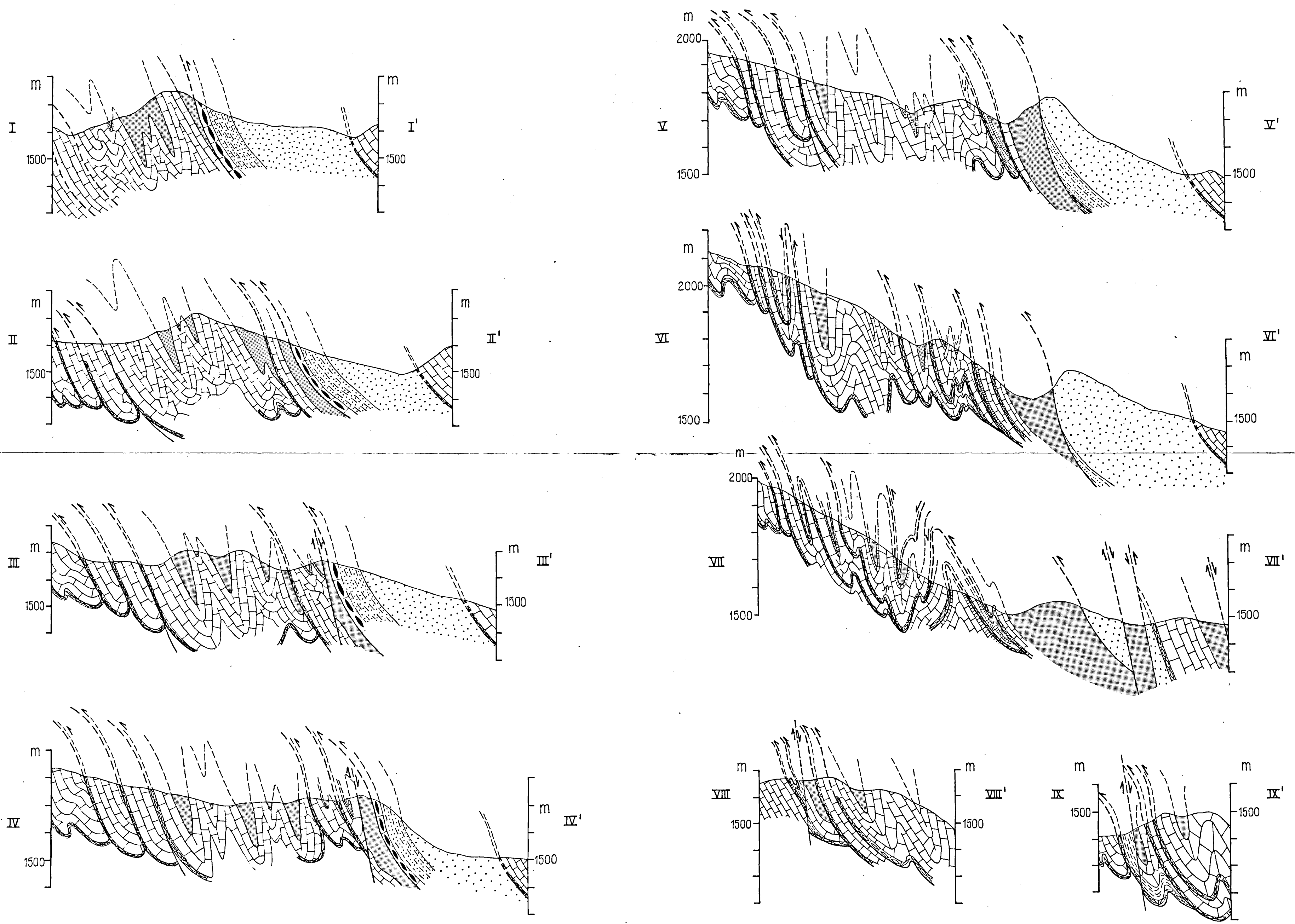
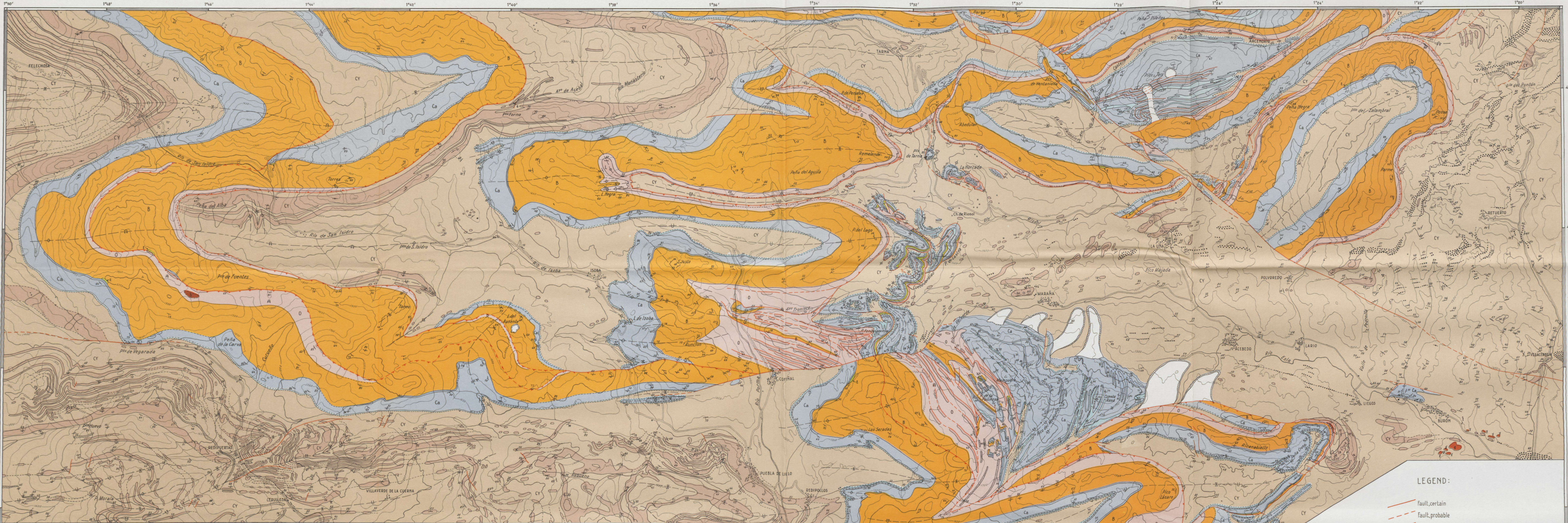




MAP AND SECTIONS OF THE PICO TEN SUBAREA
(Cantabrian Mts., Spain)
by N. Sierp
scale 1:10,000

- Yuso Group
- Caliza de Montaña Formation
- Red shales
- Griotte
- Barrios Formation
- Oville Formation
- Lancara Formation



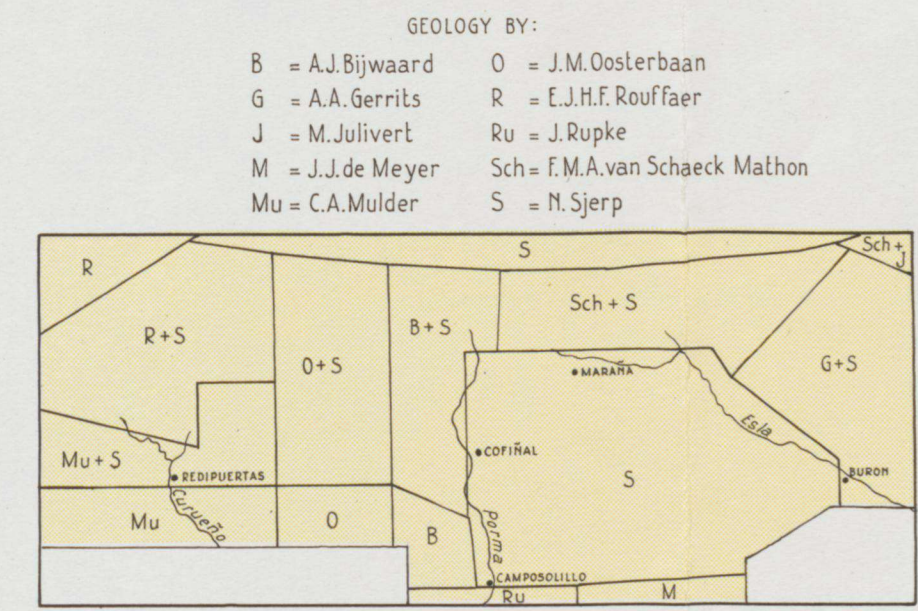
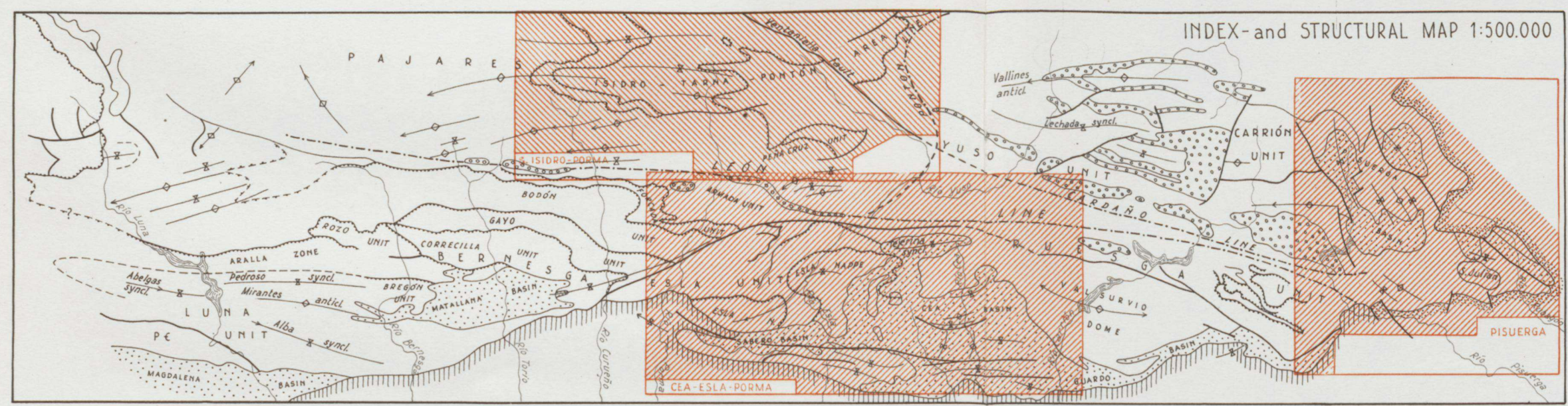
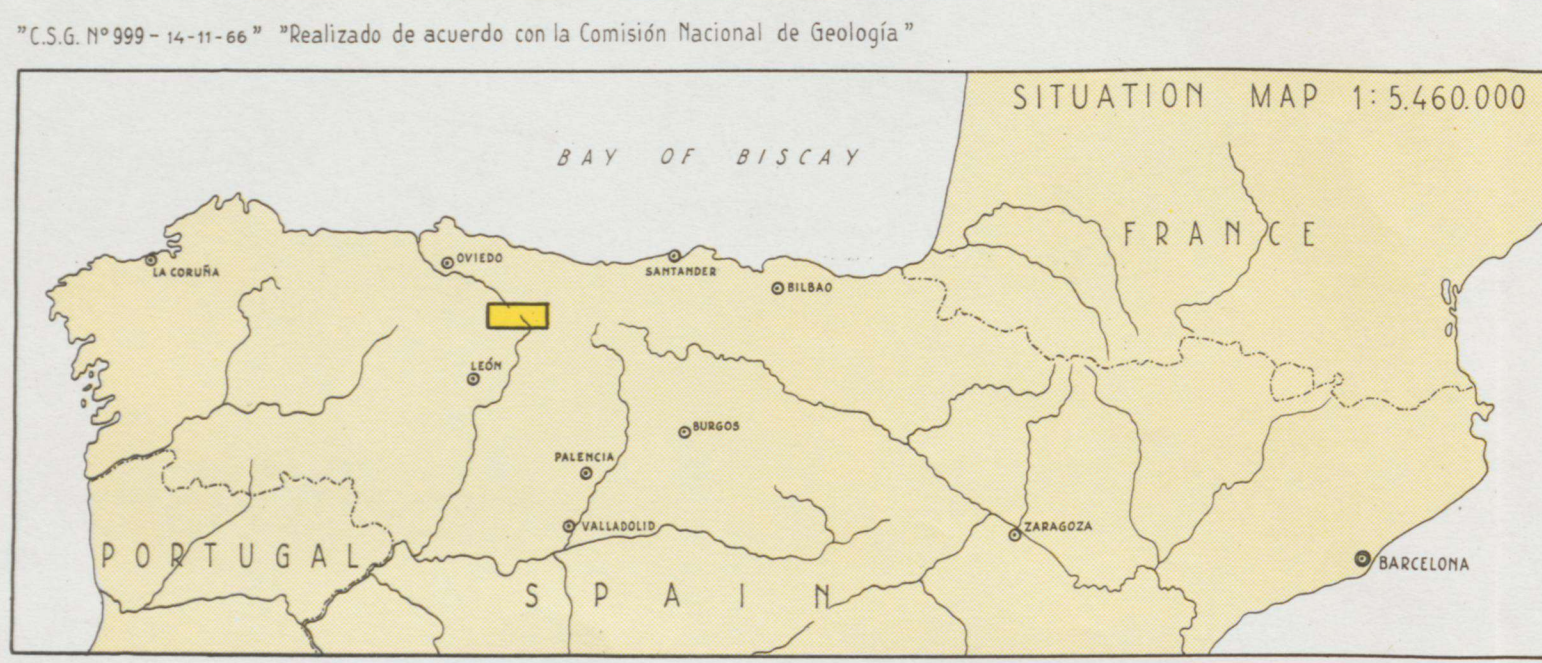


GEOLOGICAL MAP
of the
SOUTHERN CANTABRIAN MOUNTAINS, SPAIN

SHEET SAN ISIDRO - PORMA 1966
Prepared by N. SJERP

SCALE 1:50.000
0 1 2 3 4 5 km

Published by the Geological Institute, Leiden University Editors: L.U. de SITTER and D. BOSCHMA



LEGEND:

- fault, certain
- - - fault, probable
- > Thrust
- ~ Anticline
- ~ Syncline
- ~ Overturned anticline
- ~ Overturned syncline
- ~ Strike, dip of 40°
- ~ Strike, dip of 90°
- ~ Strike, inverted dip of 30°
- ⊗ Mine
- ⊙ Fossil flora
- ⊠ Trilobite fauna
- ⊞ Moraine material
- ⊕ Glacial cirque

Shale, sandstone, conglomerate	Ceu	Rucayo formation	Cea group	Stephanian B	CARBONIFEROUS
Limestone	CY		Yusa group	Westphalian A-D	
Sandstone	CY				
Shale		Ricacabiello formation	Ruesga group	Namurian	DEVONIAN
Limestone		Caliza de Montaña fm.		Visean	
Grotte, radiolarites		Alba formation		Tournaisian	ORDOVICIAN
Cherty black shale		Vegamián formation		Acadian	
Sandstone, limestone	E	Ermita formation		Upper Famennian	CAMBRIAN
Orthoquartzite	B	Barrios formation		Llanvirnian	
(Quartz) sandstone	O	Ovile formation		Tremadocian	
Shale	L	Lancara formation			
Grotte, limestone, dolomite					
Igneous rocks		Carboniferous			
		Lower Paleozoic			

N-S STRUCTURAL SECTIONS, corresponding to map sheet SAN ISIDRO - PORMA

Prepared by N. SLEPP, 1966

SCALE 1:50,000

