

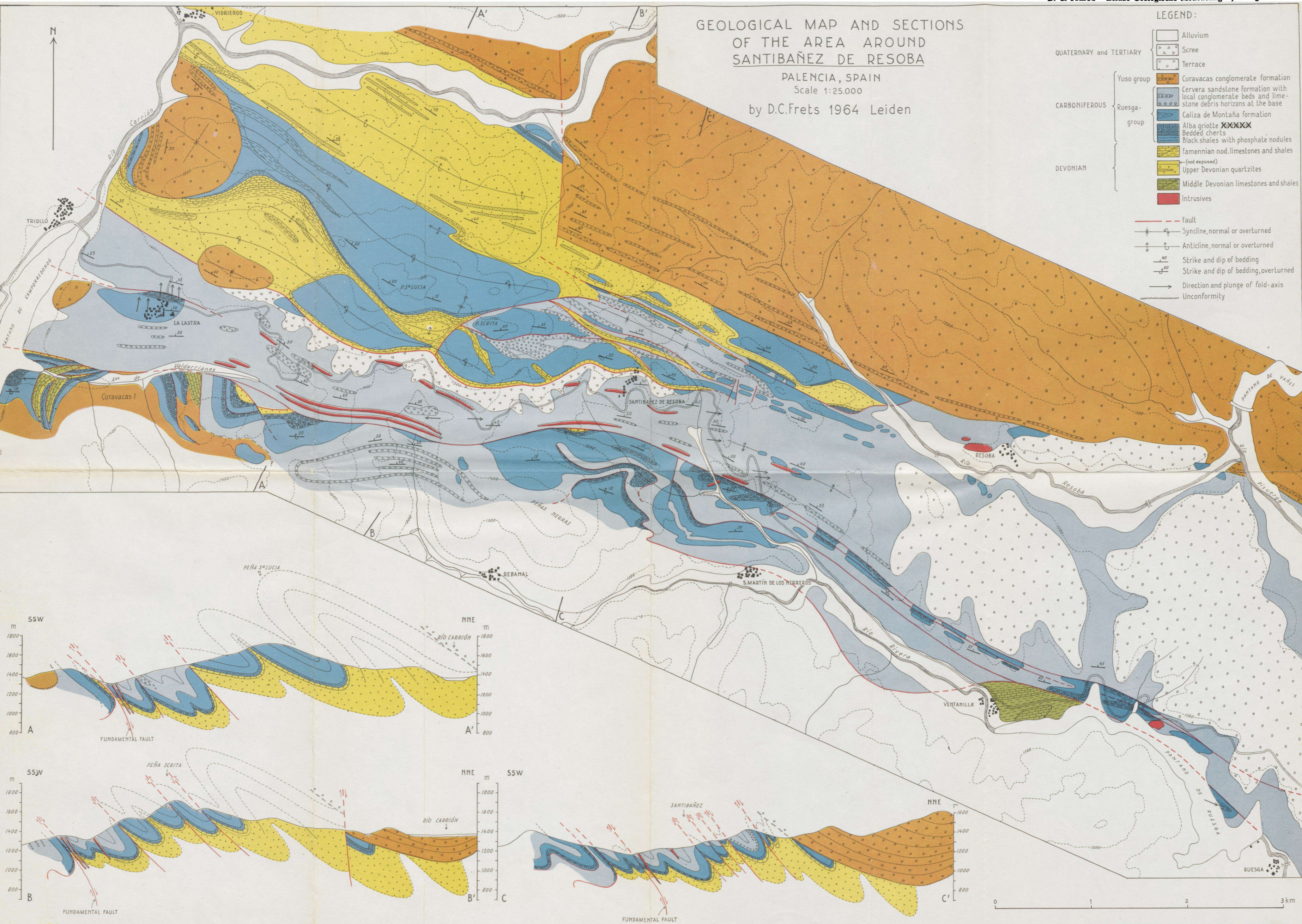
GEOLOGICAL MAP AND SECTIONS OF THE AREA AROUND SANTIBAÑEZ DE RESOBA

PALENCIA, SPAIN
Scale 1:25.000

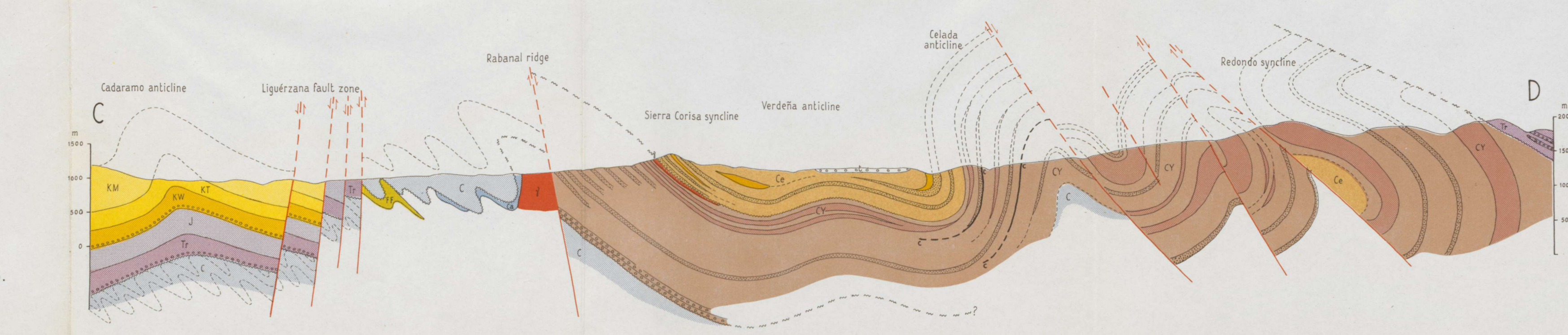
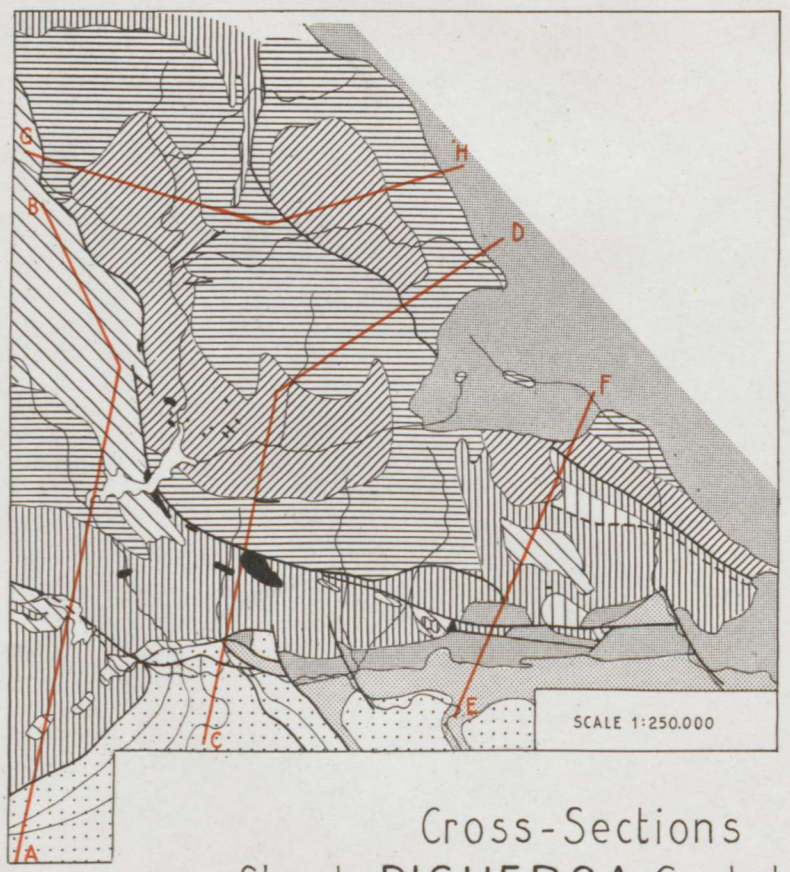
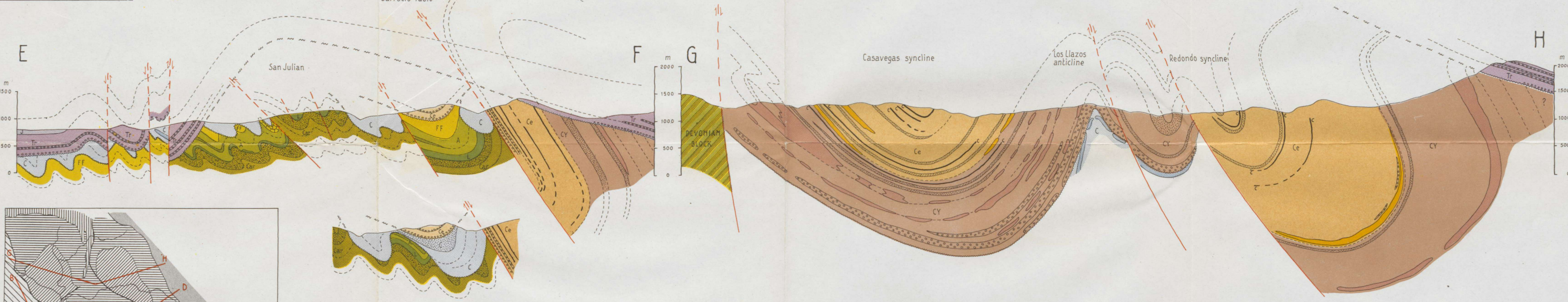
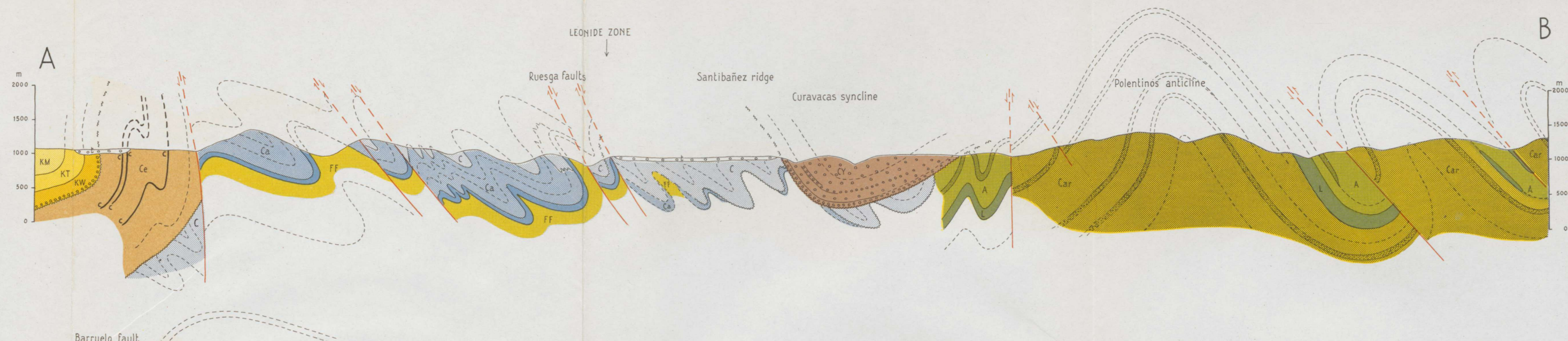
by D.C.Frets 1964 Leiden

LEGEND:

- Alluvium
 - ▨ Scree
 - ▩ Terrace
 - QUATERNARY and TERTIARY
 - Yuso group
 - ▨ Curavacas conglomerate formation
 - ▨ Cervera sandstone formation with local conglomerate beds and limestone debris horizons at the base
 - CARBONIFEROUS
 - Ruesga-group
 - ▨ Caliza de Montaña formation
 - ▨ Alba griotte
 - ▨ Bedded cherts
 - ▨ Black shales with phosphate nodules
 - DEVONIAN
 - ▨ Famennian nod. limestones and shales
 - ▨ Upper Devonian quartzites
 - ▨ Middle Devonian limestones and shales
 - ▨ Intrusives
-
- - - Fault
 - ↗ ↘ Syncline, normal or overturned
 - ↕ Anticline, normal or overturned
 - ↘ ↙ Strike and dip of bedding
 - ↘ ↙ Strike and dip of bedding, overturned
 - ↗ ↘ Direction and plunge of fold-axis
 - ~ Unconformity



o o o Tert. terraces	Nodular lst. Sst., quartzite	FF Upper Devonian
KM Limestone, marl	Shale Sst., lst.	A Eifelian
KT Lst.,sst.,glauc. sands, marls	Lst., shale	L Ems.-Siegen.
KW Cgl.,sst.,white-red sh.lenses	Quartzite,sst.,sh.	Car Gedinn.+Upp.Sil.
J Marls,lst.	Intrusives	I Intrusives
Tr Cgl.,sst.,shale	Quartzite conglomerate	
Ce Cgl.,sst.,coal	Sandstone	
Ce Occ.cgl.,sst.,sh., coal (prod.)	Coal bed	
Ce Limestone	Fault	
CY Sst.,shale, coal(prod.),cgl.		
CY Limestone		
CY Cgl.,sst.,shale		
c Sst.,sh.,cgl.		
Ca Bitum.lst.		
Vis. Grotte,lst.,chert, red-green sh.		



Cross-Sections
 Sheet PISUERGA, Cantabr. Mts.
 SCALE 1:50.000
 Geol. Dep^t, Leiden University, 1964