

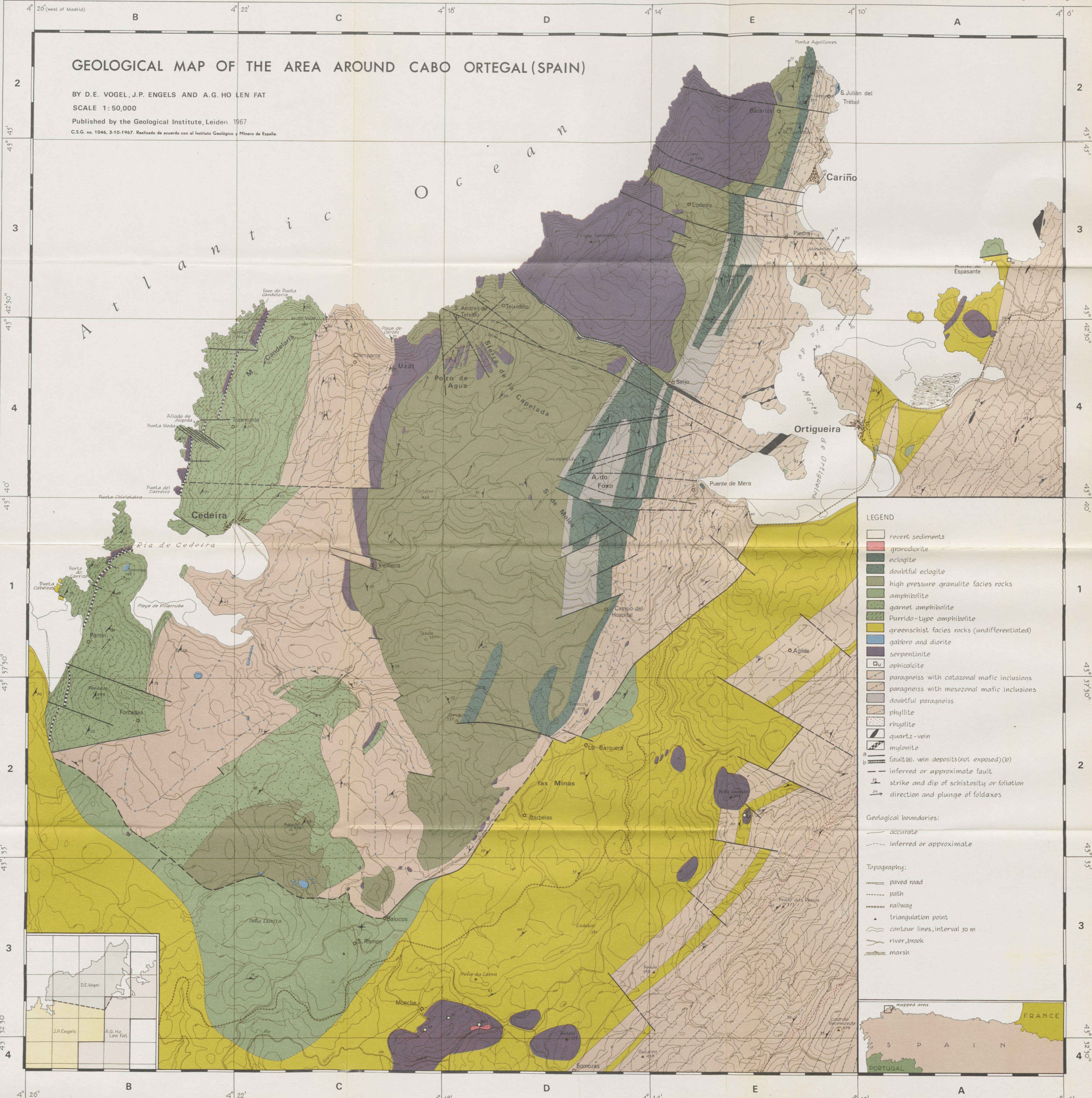
GEOLOGICAL MAP OF THE AREA AROUND CABO ORTEGAL (SPAIN)

BY D. E. VOGEL, J. P. ENGELS AND A. G. HO LEN FAT

SCALE 1:50,000

Published by the Geological Institute, Leiden 1967

C.S.G. no. 1046, 3-10-1967. Realizado de acuerdo con el Instituto Geológico y Minero de España.



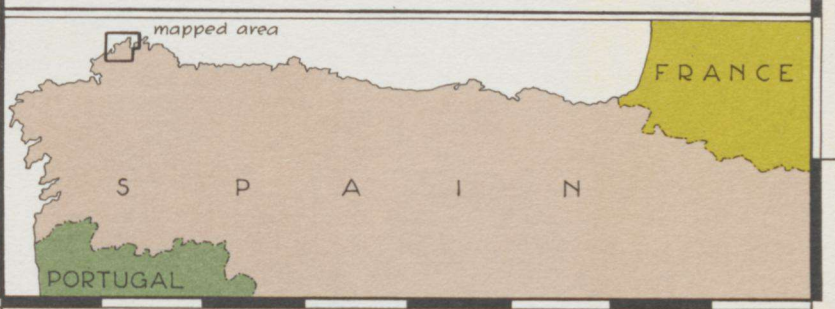
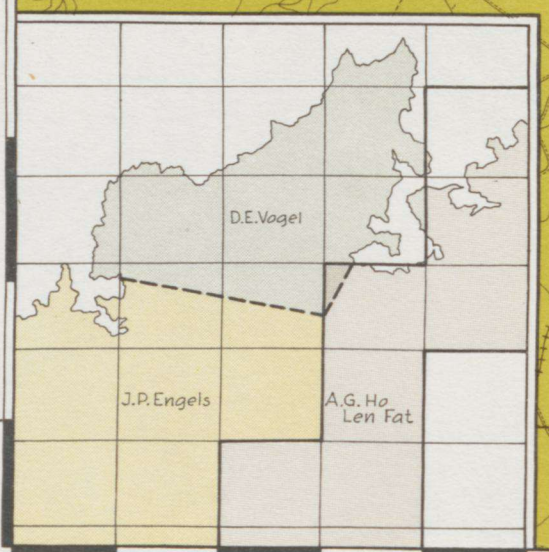
- LEGEND**
- recent sediments
 - granodiorite
 - eclogite
 - doubtful eclogite
 - high pressure granulite facies rocks
 - amphibolite
 - garnet amphibolite
 - Purrido-type amphibolite
 - greenschist facies rocks (undifferentiated)
 - gabbro and diorite
 - serpentinite
 - opihcalcite
 - paragneiss with catazonal mafic inclusions
 - paragneiss with mesozonal mafic inclusions
 - doubtful paragneiss
 - phyllite
 - rhyolite
 - quartz-vein
 - mylonite
 - fault (a), vein deposits (not exposed) (b)
 - - - inferred or approximate fault
 - ↗ strike and dip of schistosity or foliation
 - ↘ direction and plunge of foldaxes

Geological boundaries:

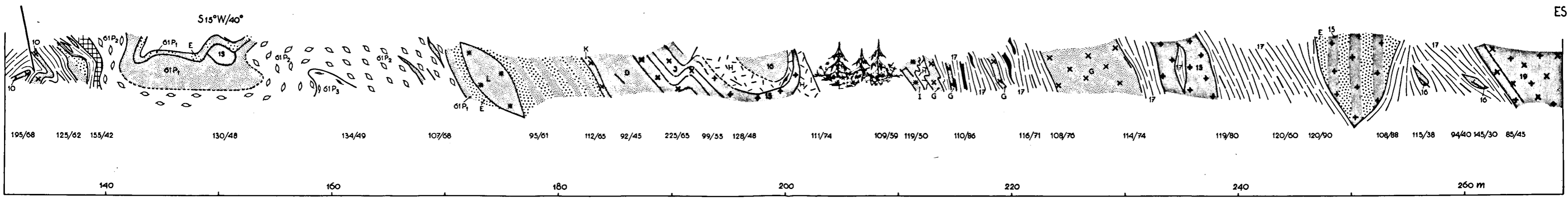
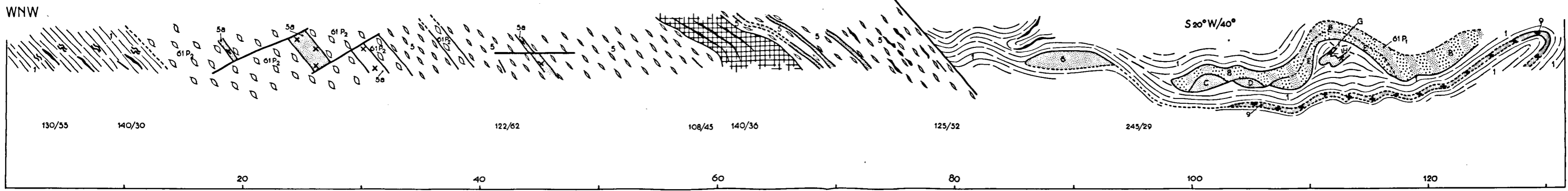
- accurate
- - - inferred or approximate

Topography:

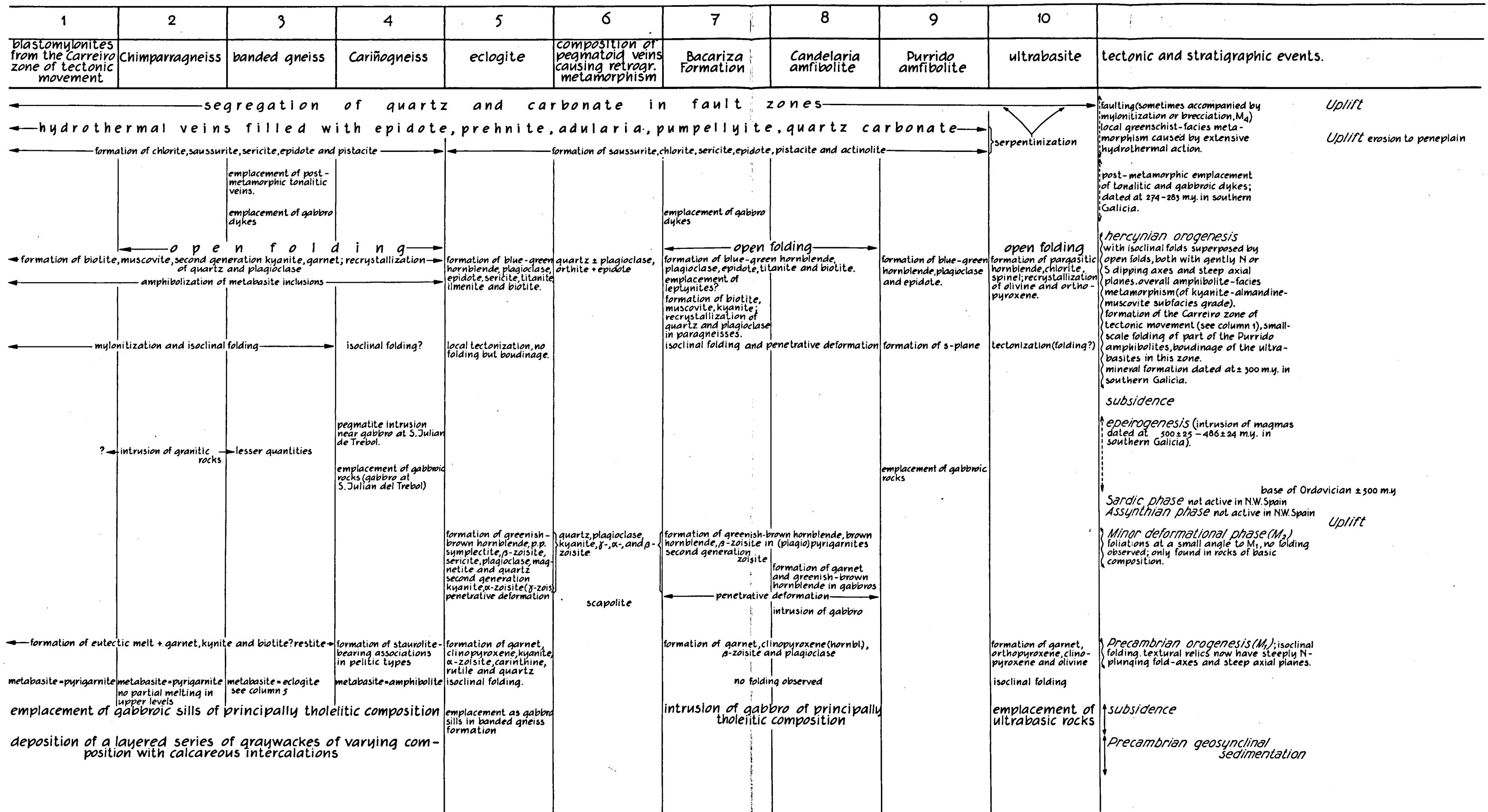
- paved road
- - - path
- railway
- ▲ triangulation point
- contour lines, interval 50 m
- river, brook
- marsh



Masanteo geological section



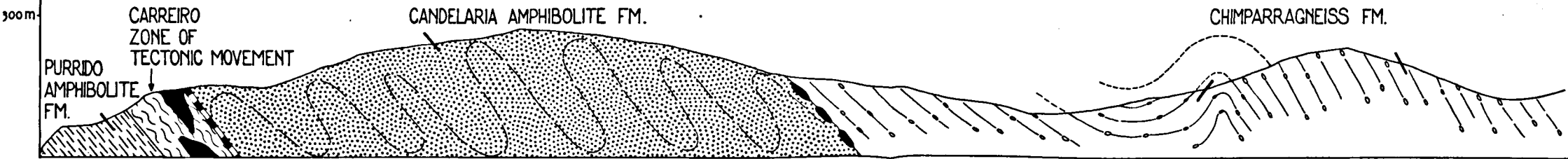
- | | | | | | | | | | | | |
|--|---|--|---|--|------------------|--|---------------|--|------------------|------------------------|---|
| | hornblende-eclogite | | garnet-amphibolite type M478 | | hybrid rocks | | planar gneiss | | pegmatoid gneiss | 1, B, 61P ₁ | numbers of samples |
| | eclogite-amphibolite + amphibolite-eclogite with brown/green hornblende | | (garnet)amphibolite with brown/green hornblende | | mylonitic gneiss | | augen gneiss | | quartz | | direction and amount of dip of the S-plane |
| | | | | | | | | | | | direction and amount of plunge of the lineation |



Geological cross-section of Cabo Ortegal

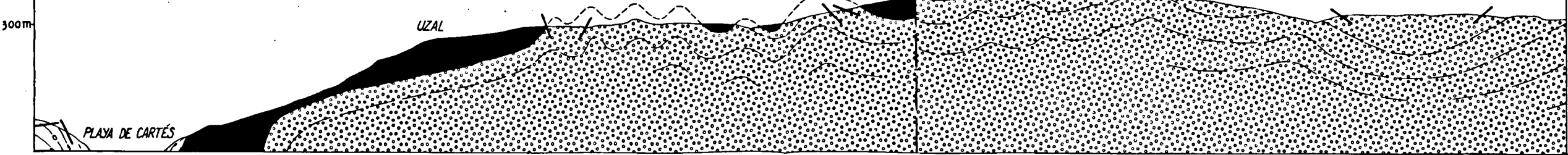
W
 Long 43° 42' 28"
 Lat. (W of Mad.) 4° 22' 2"

E
 43° 41' 2"
 4° 19' 6"



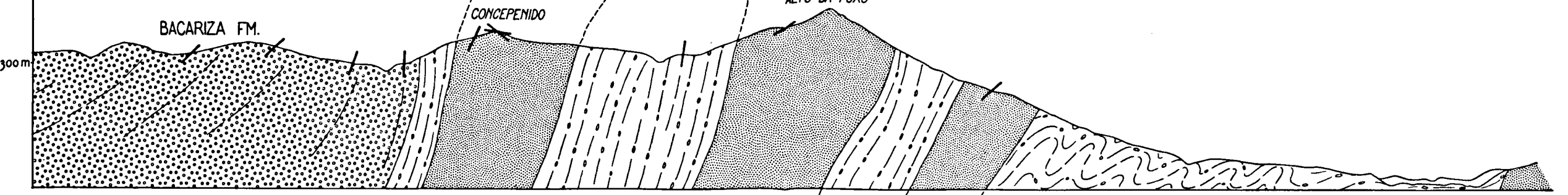
WNW
 43° 42' 15"
 4° 19' 5"

ENE
 43° 41' 2"
 4° 16' 20"

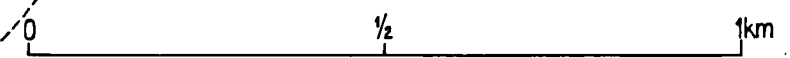


NW
 43° 41' 26"
 4° 16' 20"

SE
 43° 40' 15"
 4° 13' 0"



- | | |
|-------------------------|-------------|
| Eclogite | Ultrabasite |
| High-pressure granulite | Paragneiss |
| Garnet amphibolite | Mylonite |
| Schistose amphibolite | |



— Direction and amount of dip of the foliation