

**THE MICRYPHANTIDAE AND LINYPHIIDAE (ARANEIDA)
OF THE NETHERLANDS, WITH SOME NOTES ON THE
GENUS *LEPTYPHANTES* MENGE, 1866**

by

P. J. VAN HELSDINGEN
(Rijksmuseum van Natuurlijke Historie, Leiden)

In the present paper a list is given of the species of two families of spiders, the Micryphantidae and the Linyphiidae, as far as they are known from our country. The list is the result of a revision of the existing records, which date back to 1858, when G. A. Six published a list of spiders collected by him in the province of Utrecht, which was followed in 1863 by a supplementary list. Becker (1879^a) republished the records of Six, and moreover mentioned the results of his own collecting in our country (1879^{b, c}). I do not know whether the specimens concerned have been lost, or that the collectors did not consider it worth while to preserve the material on which their records are based. Because I have not seen their specimens, I have entered their records with a question-mark. It is possible that Six has given part of his material to A. W. M. van Hasselt, because the type-specimens of *Linyphia henricae* Six are still in the Collection Van Hasselt.

Van Hasselt himself has published a catalogue of spiders in 1885, with supplementary lists in 1886, 1890 and 1898. He has preserved a few specimens only of each species, but together they constitute the first collection of spiders from our country still in existence, at present forming part of the collections of the Rijksmuseum van Natuurlijke Historie at Leiden. In an earlier paper (van Helsdingen, 1961) I published the results of a revision of the Micryphantidae and Linyphiidae of this collection. In the present paper van Hasselt's records are not repeated, but reference is made to my revision.

I have attempted to trace the material of the more recent publications, viz., those by Chrysanthus (1951^{a, b}, 1953, 1954, 1955^{a, b}, 1957^{a, b}, 1958, 1961), Chrysanthus, van Damme and Naaktgeboren (1959^{a, b}), van der Drift (1951), van der Hammen (1947, 1949, 1950), van Heerdt (1960), Hulsebos (1959, 1961, 1962) and de Jong (1949), in order to verify the records. In this I succeeded with one exception (de Jong, 1949). In the following revised list, records of specimens that are lost, or that have not been accessible to me, are preceded by a question-mark. Whenever it appeared to be

useful I have added unpublished data from material collected by myself; no attempt has, however, been made to give complete data on the distribution, because much collecting still has to be done before we can draw conclusions on this subject.

As in my previous paper I follow the nomenclature of Whiele (1956, 1960).

I wish to express my deep gratitude to Father Chrysanthus O.F.M.Cap., Dr. P. F. van Heerdt, Mr. J. Hulsebos, Mrs. E. N. G. Joosse-van Damme and Dr. E. M. Kruytzer, for their co-operation in lending me their collections. I am very much indebted to Dr. L. van der Hammen for his kind help and advice when taking up this subject.

MICRYPHANTIDAE

Maso sundevalli (Westring, 1851)

Maso sundevalli, Chrysanthus et al., 1959^b, p. 52.

?*Maso sundevalli*, Hulsebos, 1959, p. 254.

Maso sundevalli, van Helsdingen, 1961, p. 242.

Localities. Friesland: ?Schiermonnikoog; Overijssel: Weerselo (Molenvan); Gelderland: Lochem; Zuid-Holland: Den Haag.

Minicia marginella (Wider, 1834)

Material of this species has been collected by the author in the "Kootwijkerveen" near Apeldoorn, viz. 1 subadult ♀ and 1 subadult ♂ (10.IV. 1961), 3 ♀♀ and 4 ♂♂ (8.V.1961), and some other females in the following months. The specimens have been taken in and among *Molinia*-tussocks.

Locality. Gelderland: Apeldoorn (Kootwijkerveen).

Pelecopsis parallela (Wider, 1834)

Lophocarenum parallelum, Chrysanthus, 1958, p. 143.

Pelecopsis parallela, van Helsdingen, 1961, p. 242.

Localities. Noord-Holland: ?Naarden; Zuid-Holland: ?Scheveningen; Limburg: Maastricht.

Pelecopsis elongata (Wider, 1834)

?*Micryphantes inaequalis*, Six, 1858, p. 295.

?*Erigone elongata*, Becker, 1879^a, p. XLIV.

Pelecopsis elongata, van Helsdingen, 1961, p. 242.

Localities. Utrecht: ?De Bilt; Noord-Holland: ?Naarden; Zuid-Holland: ?Scheveningen; Limburg: ?Maastricht.

Pelecopsis nemoralis (Blackwall, 1841)

Pelecopsis nemoralis, van Helsdingen, 1961, p. 242.

Locality. Zuid-Holland: Loosduinen.

The specimens in the Collection Van Hasselt are the only specimens obtained in our country till now. They are the type-specimens of *Walckenaera nemoralioides* O.P.-Cambridge (1884, p. 91).

?Trichopterna thorelli (Westring, 1861) ¹⁾

?*Trichopterna thorelli*, Hulsebos, 1962, p. 235.

Locality. Drente: ?Havelte.

Trichopterna cito (O.P.-Cambridge, 1872)

Trichopterna cito, van Helsdingen, 1961, p. 242.

Locality. Zuid-Holland: Loosduinen.

Ceratinella brevipes (Westring, 1851)

Ceratinella brevipes, van Helsdingen, 1961, p. 243.

I collected the species also at Hoogmade near the "Brasemermeer".

Localities. Utrecht: ?Driebergen; Zuid-Holland: Hoogmade, ?Scheveningen; Noord-Brabant: ?Breda.

Ceratinella brevis (Wider, 1834)

?*Micryphantes phaeopus*, Six, 1858, p. 295; 1863, p. 126.

?*Erigone brevis*, Becker, 1879^a, p. XLIV.

?*Ceratinella brevis*, de Jong, 1949, p. 214.

Ceratinella brevis, van Helsdingen, 1961, p. 243.

Also collected by the author near Barneveld ("Gerritsfles") (1 ♀, 3.IX.1959) and in the "Kootwijkerveen" near Apeldoorn (1 ♀, 28.IX.1961).

Localities. Gelderland: Apeldoorn (Kootwijkerveen), Barneveld, ?Wageningen; Utrecht: ?Utrecht; Noord-Holland: ?Naardermeer; Zuid-Holland: ?'s Gravensande; Limburg: ?Roermond.

Ceratinella scabrosa (O.P.-Cambridge, 1870)

Ceratinella scabrosa, Chrysanthus, 1961, p. 40.

Ceratinella scabrosa, van Helsdingen, 1961, p. 243.

Locality. Limburg: Heerlen.

1) It appeared to be impossible to check the above-mentioned record, because of loss of the specimen concerned. Consequently it is uncertain whether the species belongs to our fauna.

Walckenaera acuminata Blackwall, 1833

Walckenaera acuminata, Chrysanthus, 1958, p. 144.

Walckenaera acuminata, van Helsdingen, 1961, p. 243.

?*Walckenaera acuminata*, Hulsebos, 1962, p. 235.

Localities. Drente: ?Dwingeloo; Utrecht: De Bilt; Zuid-Holland: Den Haag; Limburg: Heerlen, Kunrade, Vijlen.

Wideria antica (Wider, 1834)

Wideria antica, Chrysanthus, 1957, p. 31.

Wideria antica, van Helsdingen, 1961, p. 243.

Localities. Gelderland: Winterswijk; Utrecht: Zeist; Zuid-Holland: Loosduinen, Wassenaar; Limburg: Heerlen.

Wideria cucullata (C. L. Koch, 1836)

Wideria cucullata, van der Drift, 1951, p. 120.

Wideria cucullata, Chrysanthus, 1951^b, p. 99.

Wideria cucullata, Chrysanthus et al., 1959^b, p. 50.

Wideria cucullata, van Helsdingen, 1961, p. 244.

Wideria cucullata, Hulsebos, 1962, p. 234.

Localities. Drente: Dwingeloo; Overijssel: Weerselo (Molenven); Gelderland: Groesbeek, Hoenderloo; Zuid-Holland: Loosduinen; Noord-Brabant: Rijen; Limburg: Brunssum, Roermond.

Wideria melanocephala (O.P.-Cambridge, 1881)

One specimen was collected, by means of a catch-box, in the sand-dunes of "Meijendel" (1 ♂, 17.VI.1953) in an area covered with Marram-Grass. A catch-box placed at Dalen in the province of Drente in wet heath also contained the species (2 ♂♂, 10.VII.1961). Another specimen was collected by the author at the "Kootwijkerveen" near Apeldoorn from amongst grass in a moist area (1 ♀, 22.V.1962).

Localities. Drente: Dalen; Gelderland: Apeldoorn (Kootwijkerveen); Zuid-Holland: Den Haag (Meijendel).

Wideria fugax (O.P.-Cambridge, 1870)

Wideria fugax, Chrysanthus, 1959^b, p. 50.

Wideria fugax, van Helsdingen, 1961, p. 244.

Localities. Overijssel: Weerselo (Molenven); Gelderland: Apeldoorn.

Wideria capito (Westring, 1862)

Wideria capito, Chrysanthus et al., 1959^a, p. 183; 1959^b, p. 50.

Locality. Overijssel: Weerselo (Molenven).

Cornicularia unicornis (O.P.-Cambridge, 1861)

Cornicularia unicornis, Chrysanthus, 1953, p. 88.

Cornicularia unicornis, van Heerdt, 1960, p. 234.

Cornicularia unicornis, van Helsdingen, 1961, p. 244.

Cornicularia unicornis, Hulsebos, 1962, p. 235.

Localities. Friesland: Terschelling; Drente: Dwingeloo, ?Havelte; Gelderland: Wageningen; Zuid-Holland: Wassenaar; Limburg: Grevenbicht.

Cornicularia kochi (O.P.-Cambridge, 1872)

Cornicularia kochi, Chrysanthus et al., 1959^b, p. 51.

Cornicularia kochi, van Helsdingen, 1961, p. 244.

Localities. Overijssel: Weerselo (Molenven); Zuid-Holland: Den Haag.

Cornicularia cuspidata (Blackwall, 1833)

Cornicularia cuspidata, Chrysanthus, 1957^b, p. 31.

Cornicularia cuspidata, Chrysanthus et al., 1959^b, p. 51.

Cornicularia cuspidata, van Helsdingen, 1961, p. 244.

Cornicularia cuspidata, Hulsebos, 1962, p. 235.

Localities. Drente: Dwingeloo, Havelte; Overijssel: Weerselo (Molenven); Limburg: Roermond, Wellerlooi.

Cornicularia vigilax (Blackwall, 1853)

Cornicularia vigilax, van Helsdingen, 1961, p. 244.

Localities. Gelderland: Lochem; Zuid-Holland: Rijswijk, Scheveningen, Wassenaar.

Prosopotheca monoceros (Wider, 1834)

?*Micryphantes monoceros*, Six, 1858, p. 295.

?*Erigone monoceros*, Becker, 1879^a, p. XLIV.

Prosopotheca monoceros, van Helsdingen, 1961, p. 244.

Prosopotheca monoceros, Hulsebos, 1962, p. 235.

The species has also been taken by the author at Apeldoorn (heath) and at Texel (sand-dunes).

Localities. Drente: Dwingeloo, Havelte; Gelderland: Apeldoorn; Utrecht: ?Utrecht; Noord-Holland: Texel; Zuid-Holland: Loosduinen.

Trachynella obtusa (Blackwall, 1836)

Trachynella obtusa, van der Drift, 1951, p. 120.

Trachynotus obtusus, Chrysanthus, 1955^b, p. 494.

Trachynella obtusa, Chrysanthus et al., 1959^b, p. 50.

Trachynella obtusa, van Helsdingen, 1961, p. 245.

Localities. Overijssel: Weerselo (Molenven); Gelderland: Hoenderloo,

Oosterbeek; Zuid-Holland : Den Haag (Meijendel) ; Noord-Brabant : Breda;
Limburg : Roermond.

Trachynella nudipalpis (Westring, 1851)

Trachynella nudipalpis, Chrysanthus, 1958, p. 144.
Trachynella nudipalpis, Chrysanthus et al., 1959^b, p. 50.
Trachynella nudipalpis, van Helsdingen, 1961, p. 245.
Trachynella nudipalpis, Hulsebos, 1962, p. 234.

Localities. Drente : Dwingeloo ; Overijssel : Weerselo (Molenven) ; Noord-Brabant : Breda ; Limburg : Kerkrade.

Dicymbium nigrum (Blackwall, 1834)

Dicymbium nigrum, Chrysanthus, 1954, p. 40.
Dicymbium nigrum, van Helsdingen, 1961, p. 245.

Locality. Limburg : Rijckholt.

Dicymbium tibiale (Blackwall, 1836)

Dicymbium tibiale, Chrysanthus, 1961, p. 40.

Locality. Limburg : Heerlen.

Moebelia penicillata (Westring, 1851)

Moebelia penicillata, Chrysanthus, 1958, p. 144.
Moebelia penicillata, Hulsebos, 1959, p. 254 ; 1962, p. 235.
Moebelia penicillata, van Helsdingen, 1961, p. 245.

Localities. Friesland : Schiermonnikoog ; Drente : De Wijk, Dwingeloo ; Gelderland : Wageningen ; Zuid-Holland : Den Haag ; Zeeland : Zierikzee ; Limburg : Heerlen, Maastricht, Roermond.

Minyriolus pusillus (Wider, 1834)

?*Micryphantes ochropus*, Six, 1858, p. 295.
?*Erigone pusilla*, Becker, 1879^a, p. XLIII.
Minyriolus pusillus, Chrysanthus et al., 1959^b, p. 52.
Minyriolus pusillus, van Helsdingen, 1961, p. 245.
Minyriolus pusillus, Hulsebos, 1962, p. 235.
Acartauchenius scurrilis, Hulsebos, 1962, p. 235.

Localities. Drente : Dwingeloo ; Overijssel : Weerselo (Molenven) ; Utrecht ; Zuid-Holland : Loosduinen.

Panamomops mingei Simon, 1926

Fr. Chrysanthus collected one specimen at Oosterhout (1♀, 27.III.1955).
Locality. Noord-Brabant : Oosterhout.

?Panamomops sulcifrons (Wider, 1834) ¹⁾*?Micryphantes sulcifrons*, Six, 1863, p. 162.*?Erigone sulcifrons*, Becker, 1879^a, p. XLIV.

Locality. Utrecht: ?Driebergen.

Saloca diceros (O.P.-Cambridge, 1870)*Saloca diceros*, Chrysanthus, 1958, p. 144.

Locality. Limburg: Vijlen.

Baryphyma pratense (Blackwall, 1861)*Baryphyma pratense*, Hulsebos, 1962, p. 235.

Locality. Drente: Dwingeloo.

Araeoncus humilis (Blackwall, 1841)*Araeoncus humilis*, Chrysanthus, 1957^b, p. 31.*Araeoncus humilis*, van Helsdingen, 1961, p. 245.

Localities. Drente: Assen; Zuid-Holland: Den Haag, Nootdorp; Noord-Brabant: Cuyk; Limburg: Wellerloo.

Araeoncus crassiceps (Westring, 1862)The female specimen recorded from the "Molenven" near Weerselo (Chrysanthus et al., 1959^a, p. 183; 1959^b, p. 54) appeared to belong to *Diplocephalus permixtus* (O.P.-Cambridge).Specimens of *Araeoncus crassiceps* (Westring), however, have since been taken by the author in the "Kootwijkerveen" near Apeldoorn amongst grass (2 ♂♂, 8/II.V.1961), and at Nieuwkoop in a marsh (2 ♂♂, I.V.1961).

Localities. Gelderland: Apeldoorn (Kootwijkerveen); Zuid-Holland: Nieuwkoop.

Metopobactrus prominulus (O.P.-Cambridge, 1872)*Metopobactrus prominulus*, van Heerdt, 1960, p. 234.*Metopobactrus prominulus*, van Helsdingen, 1961, p. 246.

Localities. Friesland: Terschelling; Zuid-Holland: Loosduinen.

Styloctetor romanus (O.P.-Cambridge, 1872)*Styloctetor romanus*, Chrysanthus, 1955^b, p. 494.*Styloctetor romanus*, van Heerdt, 1960, p. 234.

Localities. Friesland: Terschelling; Zuid-Holland: Den Haag (Meijendel).

1) It is uncertain whether the above-mentioned records are correct. They are, however, the only records of this species from our country; consequently I include the species in this list with a question-mark.

Micrargus herbigradus (Blackwall, 1854)

Micrargus herbigradus, Chrysanthus, 1958, p. 144.

Micrargus herbigradus, Chrysanthus et al., 1959^b, p. 53.

Micrargus herbigradus, van Helsdingen, 1961, p. 246.

Micrargus herbigradus, Hulsebos, 1962, p. 235.

Localities. Drente: Dwingeloo; Overijssel: Weerselo (Molenven); Zuid-Holland: Loosduinen; Limburg: Brunssum, Colmond.

Nothocyba subaequalis (Westring, 1851)

?*Nothocyba subaequalis*, de Jong, 1949, p. 215.

I have found this species at Apeldoorn on the bark of a tree (1 ♀, 1 ♂, 3.VI.1961).

Localities. Gelderland: Apeldoorn; Utrecht: ?Abcoude (Botshol).

Silometopus reussi (Thorell, 1871)

Silometopus interjectus, Chrysanthus, 1957^a, p. 44.

Silometopus reussi, van Helsdingen, 1961, p. 246.

Localities. Friesland: Terschelling; Gelderland: ?Wageningen; Zuid-Holland: ?'s Gravensande, ?Loosduinen, Wassenaar; Noord-Brabant: Riel; Limburg: ?Roermond.

Silometopus elegans (O.P.-Cambridge, 1872)

?*Silometopus elegans*, Hulsebos, 1961, p. 4.

Silometopus elegans, van Helsdingen, 1961, p. 246.

Localities. Drente: ?Dwingeloo; Gelderland: Doesburg.

Silometopus curtus (Simon, 1881)

This species has been taken by the author at "De Beer" in the salt-marsh (1 ♂, 8.XI.1958; 3 ♀♀, 12.III.1961).

Locality. Zuid-Holland: Rotterdam (De Beer).

Dismodicus elevatus (C. L. Koch, 1838)

Dismodicus bifrons, Chrysanthus, 1953, p. 88¹).

Dismodicus elevatus, Hulsebos, 1959, p. 254; 1961, p. 3.

Hypomma cornutum, Hulsebos, 1961, p. 4.

Localities. Friesland: Schiermonnikoog; Drente: Dwingeloo, Echten; Limburg: Maastricht.

¹ This record was later corrected by Fr. Chrysanthus himself (1954, p. 40) and the specimen was identified with *Dismodicus elevatus* (C. L. Koch).

Enidia bituberculata (Wider, 1834)

- ?*Micryphantes bituberculatus*, Six, 1858, p. 295.
 ?*Erigone bituberculata*, Becker, 1879^a, p. XLIV.
Hypomma bituberculatum, Chrysanthus, 1955^a, p. 16.
Hypomma bituberculatum, Hulsebos, 1961, p. 4.
Enidia bituberculata, van Helsdingen, 1961, p. 246.

The record of van Heerdt (1960, p. 234) of *Hypomma bituberculatum* (Wider) from Terschelling is erroneous and must be corrected into *Minyrioloides trifrons* (O.P.-Cambridge).

Localities. Drente: Beilen; ?Gelderland; ?Utrecht; Zuid-Holland: ?Giesendam, ?Rotterdam; Noord-Brabant: ?Oisterwijk; Limburg: Vijlen.

Enidia fulva (Bösenberg, 1902)

- ?*Hypomma fulvum*, de Jong, 1949, p. 214.
Enidia fulva, van Helsdingen, 1961, p. 247.

Material of this species has been collected by the author near the "Nieuwkoopse plassen"; at first two males (5.VI.1958), later both males and females. The species is quite abundant at this locality, where it can be found in tussocks of sedge. I have also stated its presence at the "Naardermeer".

Localities. Overijssel: ?Kampen; Noord-Holland: Naardermeer; Zuid-Holland: Nieuwkoop.

Enidia cornuta (Blackwall, 1833)

- Hypomma cornutum*, Hulsebos, 1959, p. 254.
Enidia cornuta, van Helsdingen, 1961, p. 247.

The specimens recorded by Hulsebos as *Hypomma cornutum* (Blackwall) from Dwingeloo (1961, p. 4) belong to *Dismodicus elevatus* (C. L. Koch).

Locality. Friesland: Schiermonnikoog.

Peponocranium ludicrum (O.P.-Cambridge, 1861)

- Peponocranium ludicrum*, van Helsdingen, 1961, p. 247.

The record from Dwingeloo by Hulsebos (1962, p. 235) proved to be wrong; the specimen concerned appeared to belong to *Pocadicnemis pumila* (Blackwall).

Recently the species was found at Texel in the sand-dunes (5 ♀♀, 14.VII.1960).

Localities. Gelderland: Nijkerk; Noord-Holland: Texel; Zuid-Holland: Loosduinen, Monster.

Typhochraestus digitatus (O.P.-Cambridge, 1872)

- Typhochraestus digitatus*, van Helsdingen, 1961, p. 247.

The species was also taken near Kootwijk (7 ♀♀, 11 ♂♂, 2.X.1961) from amongst needles in a fir-wood bordering an open sandy area.

Localities. Gelderland: Arnhem, Kootwijk.

Gonatium rubens (Blackwall, 1833)

- ?*Micryphantes cheliferus*, Six, 1863, p. 126.
 ?*Erigone rubens*, Becker, 1879^a, p. XLIV.
Gonatium rubens, Chrysanthus, 1951^b, p. 99.
Gonatium rubens, Chrysanthus et al., 1959^b, p. 51.
Gonatium rubens, van Helsdingen, 1961, p. 247.
Gonatium rubens, Hulsebos, 1962, p. 235.

Localities. Drente: Dwingeloo, ?Havelte; Overijssel: Weerselo (Molenvan); Gelderland: ?Wageningen; Utrecht: ?Driebergen; Zuid-Holland: ?Loosduinen, ?Wassenaar; Limburg: Brunssum, Geleen.

Gonatium rubellum (Blackwall, 1841)

- Gonatium isabellinum*, Chrysanthus, 1951^b, p. 99.
Gonatium rubellum, van Helsdingen, 1961, p. 247.

Localities. Gelderland: Wageningen; Utrecht: Driebergen; Zuid-Holland: Loosduinen, Wassenaar; Noord-Brabant: Breda; Limburg: Gronsveld.

Gonatium corallipes (O.P.-Cambridge, 1875)

A specimen was taken in a wood of oak and birch near Epen (1 ♀, 26.IX. 1951).

Locality. Limburg: Epen.

Entelecara acuminata (Wider, 1834)

- Entelecara acuminata*, Hulsebos, 1961, p. 3.
Entelecara acuminata, van Helsdingen, 1961, p. 248.
Entelecara flavipes, Hulsebos, 1962, p. 235¹).

The specimen recorded by Fr. Chrysanthus (1957^b, p. 31) as *Entelecara acuminata* (Wider) from Wellerlooi appeared to belong to *Entelecara congenera* (O.P.-Cambridge).

Localities. Drente: Dwingeloo, Echten; Gelderland: Angerlo; Utrecht: ?Zeist; Zuid-Holland: ?Den Haag; Zeeland: ?Zierikzee; Noord-Brabant: Putte.

Entelecara congenera (O.P.-Cambridge, 1879)

- Entelecara acuminata*, Chrysanthus, 1957^b, p. 31.
Entelecara congenera, Hulsebos, 1959, p. 254; 1962, p. 235.

Localities. Friesland: Schiermonnikoog; Drente: Dwingeloo, ?Havelte; Limburg: Wellerlooi.

¹) This record of *Entelecara flavipes* (Blackwall) from our country proved to be wrong; the specimen belongs to *Entelecara acuminata* (Wider). Consequently *E. flavipes* (Blackwall) is unknown from the Netherlands.

Entelecara erythropus (Westring, 1851)¹⁾

Tiso vagans (p.p.), Hulsebos, 1959, p. 254; 1961, p. 4.

Entelecara erythropus, van Heerdt, 1960, p. 234.

Entelecara media, van Helsdingen, 1961, p. 248.

Localities. Friesland: Terschelling, Schiermonnikoog; Drente: Havelte, Tolde, Veenhuizen; Gelderland: Angerlo, Arnhem, Winterswijk; Zuid-Holland: Scheveningen, Wassenaar; Noord-Brabant: Oisterwijk.

Gnathonarium dentatum (Wider, 1834)

?*Micryphantes dentatus*, Six, 1858, p. 295.

?*Erigone dentata*, Becker, 1879^a, p. XLIII.

Gnathonarium dentatum, Chrysanthus, 1957^b, p. 31.

Gnathonarium dentatum, Chrysanthus et al., 1959^b, p. 51.

Gnathonarium dentatum, van Helsdingen, 1961, p. 248.

Localities. Overijssel: Weerselo (Molenven); Utrecht; Limburg: Wellerlooi.

Pocadicnemis pumila (Blackwall, 1841)

Pocadicnemis pumila, Chrysanthus, 1955^a, p. 16.

Pocadicnemis pumila, Chrysanthus et al., 1959^b, p. 52.

Pocadicnemis pumila, van Heerdt, 1960, p. 234.

Pocadicnemis pumila, van Helsdingen, 1961, p. 248.

Peponocranium ludicrum, Hulsebos, 1962, p. 235.

Localities. Friesland: Terschelling; Drente: Dwingeloo; Overijssel: Weerselo (Molenven); Zuid-Holland: Loosduinen; Limburg: Wellerlooi.

Minyrioloides trifrons (O.P.-Cambridge, 1863)

Hypomma bituberculatum, van Heerdt, 1960, p. 234.

Minyrioloides trifrons, van Helsdingen, 1961, p. 248.

Localities. Friesland: Terschelling; Zuid-Holland: Loosduinen, Scheveningen.

Cnephalocotes obscurus (Blackwall, 1834)

Cnephalocotes obscurus, Chrysanthus et al., 1959^b, p. 52.

Crustulina guttata, Chrysanthus et al., 1959^b, p. 47.

Cnephalocotes obscurus, Hulsebos, 1961, p. 4.

Cnephalocotes obscurus, van Helsdingen, 1961, p. 249.

1) I follow Locket and Millidge (1962, p. 28) as to the name of the present species; these authors disprove Wiehle's argumentation (1960, p. 362) that the species described by them as *Entelecara erythropus* (Westring) should represent *Entelecara media* Kulczynski. It now appears that the species recorded by Wiehle as *E. media* belongs in fact to *E. erythropus* (Westring), which is common in Western Europe, whilst the true *E. media* Kulczynski is to be found in mountains only.

Localities. Drente: Wijster; Overijssel: Weerselo (Molenven); Gelderland: Wageningen; Zuid-Holland: Den Haag, 's Gravensande; Limburg: Roermond.

Nematogmus sanguinolentus (Walckenaer, 1841)

?*Micryphantes sanguinolentus*, Six, 1863, p. 126.

Nematogmus sanguinolentus, van Helsdingen, 1961, p. 249.

Localities. Utrecht (?Driebergen); Noord-Holland: Texel; Zuid-Holland.

Tiso vagans (Blackwall, 1834)

?*Micryphantes longipalpus*, Six, 1858, p. 295.

?*Erigone longipalpis*, Becker, 1879^a, p. XLIII.

Tiso vagans, van Helsdingen, 1961, p. 249.

The records by Hulsebos (1959, p. 254; 1961, p. 4) of *Tiso vagans* (Blackwall) must be corrected; the specimens belong to *Entelecara erythropus* (Westring) and *Lepthyphantes flavipes* (Blackwall).

Localities. Gelderland; Utrecht; Zuid-Holland; Limburg: Roermond.

Erigonidium graminicola (Sundevall, 1830)

?*Erigone graminicola*, Becker, 1879^c, p. CLXXVI.

Erigonidium graminicolum, Hulsebos, 1959, p. 254; 1962, p. 235.

Erigonidium graminicolum, van Helsdingen, 1961, p. 249.

Localities. Friesland: Schiermonnikoog; Drente: Dwingeloo.

Tmeticus affinis (Blackwall, 1855)

Tmeticus affinis, van Helsdingen, 1961, p. 249.

Three specimens were taken by the author at Voorst (3 ♀♀, 24.III.1959) in litter in an alder-marsh near the IJssel. Another specimen was collected at the "Nieuwkoopse plassen" from amongst sedge near the water (1 ♂, 14.VIII.1962).

Localities. Gelderland: Voorst; Zuid-Holland: Nieuwkoop.

Gongylidium rufipes (Linnaeus, 1758)

?*Micryphantes crassipalpus*, Six, 1858, p. 295.

?*Erigone rufipes*, Becker, 1879^a, p. XLIV.

Gongylidium rufipes, Chrysanthus, 1951^b, p. 98.

Gongylidium rufipes, Hulsebos, 1959, p. 254.

Gongylidiellum murcidum, Hulsebos, 1959, p. 254.

Gongylidium rufipes, van Helsdingen, 1961, p. 250.

Localities. Friesland: Schiermonnikoog; Gelderland; Utrecht: ?De Bilt; Zuid-Holland; Limburg: Maastricht.

Thyreosthenius parasiticus (Westring, 1851)

Thyreosthenius parasiticus, Chrysanthus, 1961, p. 41.

Thyreosthenius parasiticus, van Helsdingen, 1961, p. 250.

Localities. Limburg: Bunde, Heerlen.

Thyreosthenius biovatus (O.P.-Cambridge, 1875)

Thyreosthenius biovatus, Chrysanthus, 1953, p. 88.

Thyreosthenius biovatus, van Helsdingen, 1961, p. 250.

Localities. Utrecht: Doorn, Leersum; Limburg: Haelen, Roermond.

Acartauchenius scurrilis (O.P.-Cambridge, 1872)

Acartauchenius scurrilis, van Helsdingen, 1961, p. 250.

The species was erroneously recorded from Drente by Hulsebos (1962, p. 235); the specimen concerned appeared to belong to *Minyriolus pusillus* (Wider).

Localities. Noord-Holland: Valkeveen; Zuid-Holland: Loosduinen.

Oedothorax apicatus (Blackwall, 1850)

Oedothorax apicatus, Chrysanthus, 1958, p. 144.

Oedothorax apicatus, Hulsebos, 1959, p. 254; 1961, p. 4.

Oedothorax apicatus, Chrysanthus et al., 1959^b, p. 52.

Oedothorax apicatus, van Helsdingen, 1961, p. 250.

Localities. Friesland: Schiermonnikoog; Drente: Dwingeloo; Overijssel: Weerselo (Molenven); Zuid-Holland: Loosduinen, Monster; Limburg: Heerlen.

Oedothorax retusus (Westring, 1851)

Oedothorax retusus, van Heerdt, 1960, p. 234.

Oedothorax retusus, van Helsdingen, 1961, p. 251.

?*Oedothorax retusus*, Hulsebos, 1962, p. 235.

Localities. Friesland: Terschelling; Drente: ?Dwingeloo; Zuid-Holland: Den Haag.

Oedothorax agrestis (Blackwall, 1853)

Oedothorax agrestis, Chrysanthus, 1958, p. 144.

?*Oedothorax agrestis* (p.p.), Hulsebos, 1962, p. 235.

Hulsebos's record of *Oedothorax agrestis* (Blackwall) from Dwingeloo proves to be wrong; the specimen belongs to *Oedothorax fuscus* (Blackwall). The material from Meppel has apparently got lost.

Localities. Drente: ?Meppel; Limburg: Heerlen.

Oedothorax fuscus (Blackwall, 1834)

Oedothorax fuscus, Chrysanthus, 1955^a, p. 16.

Oedothorax fuscus, van Helsdingen, 1961, p. 251.

Oedothorax fuscus, Hulsebos, 1962, p. 235.

Oedothorax agrestis (p.p.), Hulsebos, 1962, p. 235.

Localities. Drente: Dwingeloo; Utrecht; Zuid-Holland: Den Haag; Noord-Brabant: Oisterwijk; Limburg: Kerkrade.

Oedothorax tuberosus (Blackwall, 1841)

This species had not yet been recorded from our country. I have taken it now at Winterswijk in the moors near the German frontier (1 ♀, 31.VIII.1959); I have also collected a number of specimens in the "Kootwijkerveen" near Apeldoorn, especially in April and May, in heather close to the water.

Localities. Gelderland: Winterswijk, Apeldoorn.

Aulacocyba subitanea (O.P.-Cambridge, 1875)

Aulacocyba subitanea, van Helsdingen, 1961, p. 251.

Localities. Utrecht: Doorn; Zuid-Holland: Nootdorp, Loosduinen, Wassenaar.

Troxochrus scabriculus (Westring, 1851)

Troxochrus scabriculus, Chrysanthus, 1958, p. 144.

Troxochrus scabriculus, van Heerdt, 1960, p. 234.

Troxochrus scabriculus, van Helsdingen, 1961, p. 251.

Localities. Friesland: Terschelling; Gelderland: Wageningen; Zuid-Holland: Loosduinen, ?Scheveningen, ?Wassenaar; Limburg: Heerlen.

Collinsia distincta (Simon, 1884)

The species was taken by me from amongst grass in a marshy pasture near the IJssel at Voorst (2 ♀♀, 1 ♂, 29.IX.1961).

Locality. Gelderland: Voorst.

Gongylidiellum latebricola (O.P.-Cambridge, 1870)

I have collected material of this species at Kootwijk (1 ♀, 31.VII.1958), at Wiessel near Apeldoorn amongst pine-needles (1 ♀, 14.VII.1959), in the "Empesche en Tondensche heide" near Brummen (1 ♀, 26.VIII.1959) and in the "Kootwijkerveen" near Apeldoorn (1 ♀, 4. IV.1961; 2 ♂♂, 26.IX.1961).

Localities. Gelderland: Apeldoorn, Brummen, Kootwijk.

Gongyliellum murcidum Simon, 1884

Gongyliellum murcidum, Chrysanthus et al., 1959^a, p. 183; 1959^b, p. 53.

The specimens recorded by Chrysanthus (1958, p. 144) as *Gongyliellum murcidum* Simon, and by Hulsebos (1959, p. 254) under the same name, appeared to belong to *Gongyliellum vivum* (O.P.-Cambridge) and *Gongyldium rufipes* (Linnaeus) respectively.

Locality. Overijssel: Weerselo (Molenven).

Gongyliellum vivum (O.P.-Cambridge, 1875)

Gongyliellum murcidum, Chrysanthus, 1958, p. 144.

Gongyliellum vivum, Chrysanthus, 1958, p. 144.

Gongyliellum vivum, Hulsebos, 1959, p. 254; 1961, p. 4.

Gongyliellum vivum, van Helsdingen, 1961, p. 252.

Localities. Friesland: ?Schiermonnikoog; Drente: ?De Wijk; Gelderland: Groesbeek; Noord-Brabant: Breda; Limburg: Heerlen, Vijlen, Roermond.

Diplocephalus cristatus (Blackwall, 1833)

Diplocephalus cristatus, van der Hammen, 1949, pp. 73, 78; 1950, p. 110.

Diplocephalus cristatus, Chrysanthus, 1958, p. 144.

Diplocephalus cristatus, Hulsebos, 1959, p. 254; 1961, p. 4.

Diplocephalus cristatus, van Helsdingen, 1961, p. 252.

Localities. Friesland: Schiermonnikoog; Drente: Dwingeloo; Utrecht: (hothouse: Baarn); Zuid-Holland: (hothouses: Delft, Leiden, Schiedam); Limburg: Kunrade, (cave: Pietersberg).

Diplocephalus permixtus (O.P.-Cambridge, 1870)

Araconcus crassiceps, Chrysanthus et al., 1959^a, p. 183; 1959^b, p. 54.

Also taken by the author in the "Wooldseveen" near Winterswijk (1 ♀, 31.VIII.1959).

Localities. Overijssel: Weerselo (Molenven); Gelderland: Winterswijk.

Diplocephalus latifrons (O.P.-Cambridge, 1863)

Diplocephalus latifrons, van Helsdingen, 1961, p. 252.

Localities. Gelderland: ?Wageningen; Zuid-Holland: ?Den Haag.

Diplocephalus picinus (Blackwall, 1841)

Diplocephalus picinus, Chrysanthus, 1957^b, p. 31.

Diplocephalus picinus, van Helsdingen, 1961, p. 252.

Localities. Zuid-Holland: Loosduinen; Limburg: Wellerlooi.

Tapinocyba praecox (O.P.-Cambridge, 1873)

Tapinocyba praecox (p.p.), Chrysanthus et al., 1959^b, p. 52.

Tapinocyba praecox, van Helsdingen, 1961, p. 253.

Tapinocyba praecox, Hulsebos, 1962, p. 235.

Amongst the material recorded by Chrysanthus et al. as *Tapinocyba praecox* (O.P.-Cambridge) I discovered one male specimen of *Jacksonella falconeri* (Jackson).

Localities. Drente: Dwingeloo; Overijssel: Weerselo (Molenven); Zuid-Holland: Nootdorp; Limburg: Valkenburg.

Tapinocyba insecta (L. Koch, 1869)

Tapinocyba insecta, Chrysanthus, 1958, p. 144.

Tapinocyba insecta, Chrysanthus et al., 1959^b, p. 53.

Tapinocyba insecta, van Helsdingen, 1961, p. 252.

Tapinocyba insecta, Hulsebos, 1962, p. 235.

Localities. Drente: Dwingeloo; Overijssel: Weerselo (Molenven); Zuid-Holland: Loosduinen, Wassenaar; Limburg: Heerlen.

Savignya frontata Blackwall, 1833

Savignya frontata, Chrysanthus et al., 1959^b, p. 54.

Savignya frontata, van Helsdingen, 1961, p. 253.

Localities. Drente; Overijssel: Weerselo (Molenven); Gelderland: Arnhem; Utrecht; Noord-Holland; Noord-Brabant.

Lophomma punctatum (Blackwall, 1841)

Lophomma punctatum, Chrysanthus et al., 1959^a, p. 183; 1959^b, p. 53.

Lophomma punctatum, Chrysanthus, 1961, p. 40.

Localities. Overijssel: Weerselo (Molenven); Limburg: Heerlen.

Erigonella ignobilis (O.P.-Cambridge, 1870)

Specimens have been taken by the author near the "Brasemermeer" (1 ♀, 2 ♂♂, 19/26.III.1961) and at Nieuwkoop (1 ♀, 16.IV.1961). At both localities it was found amongst grass in marshy places.

Localities. Zuid-Holland: Brasemermeer, Nieuwkoop.

Erigone vagans Savigny et Audouin, 1825

?*Erigone vagans*, de Jong, 1949, p. 215.

Erigone vagans, van Helsdingen, 1961, p. 253.

Material was also collected by the author near the "Nieuwkoopse plassen" between low herbage (2 ♀♀, 1 ♂, 1.V.1961).

Localities. ?N.O.-polder; Zuid-Holland: Nieuwkoop.

Erigone dentipalpis (Wider, 1834)

- ?*Erigone dentipalpis*, Six, 1858, p. 295.
 ?*Erigone dentipalpis*, Becker, 1879^a, p. XLIII.
Erigone dentipalpis, van der Hammen, 1950, p. 110.
Erigone atra (p.p.), Chrysanthus, 1951^b, p. 99.
Erigone dentipalpis, Chrysanthus, 1954, p. 40.
Erigone atra (p.p.), Hulsebos, 1959, p. 254.
Erigone dentipalpis (p.p.), Hulsebos, 1959, p. 254; 1961, p. 4.
Erigone dentipalpis, van Helsdingen, 1961, p. 253.

Erigone dentipalpis (Wider) and *Erigone atra* (Blackwall) have been confounded with each other both by Hulsebos and Chrysanthus.

Localities. Friesland: Schiermonnikoog; Drente: Havelte; ?Utrecht; ?Noord-Holland; ?Noord-Brabant; Limburg: Brunssum, Wellerlooi, (cave: Pietersberg).

Erigone atra (Blackwall, 1833)

- Erigone atra* (p.p.), Chrysanthus, 1951, p. 99.
Erigone atra, van Heerdt, 1960, p. 234.
Erigone atra, Hulsebos, 1961, p. 4.
Erigone dentipalpis (p.p.), Hulsebos, 1961, p. 4.
Erigone atra, van Helsdingen, 1961, p. 253.

Localities. Friesland: Terschelling; Drente: Beilen, Dwingeloo, Havelte, Ruinerwold; Limburg: Brunssum.

Erigone longipalpis (Sundevall, 1830)

- Erigone longipalpis*, van Helsdingen, 1961, p. 254.

Also taken by the author at "De Beer" on the sea-shore (1 ♂, 12.III.1961) and near the IJssel at Voorst (1 ♀, 29.IX.1961).

Locality. Gelderland: Voorst; Zuid-Holland: Rotterdam (De Beer).

Erigone arctica maritima Kulczynski, 1902

- Erigone arctica*, Chrysanthus, 1955, p. 494.
Erigone arctica, Hulsebos, 1959, p. 254.
Erigone arctica, van Heerdt, 1960, p. 234.
Erigone arctica maritima, van Helsdingen, 1961, p. 254.

Localities. Friesland: Terschelling, Schiermonnikoog.

Asthenargus paganus (Simon, 1884)

- Asthenargus paganus*, Chrysanthus et al., 1959^a, p. 183; 1959^b, p. 54.
Asthenargus paganus, Hulsebos, 1962, p. 235.

Localities. Drente: Dwingeloo; Overijssel: Weerselo (Molenven).

Monocephalus fuscipes (Blackwall, 1836)*Monocephalus fuscipes*, Chrysanthus, 1961, p. 40.

Locality. Limburg: Heerlen.

Glyphesis servulus (Simon, 1881)*Glyphesis servulus*, van Helsdingen, 1961, p. 254.

Locality. Zuid-Holland: Den Haag.

Jacksonella falconeri (Jackson, 1908) ¹⁾*Jacksonella falconeri*, Chrysanthus et al., 1959^a, p. 183; 1959^b, p. 53.*Tapinocyba praecox* (p.p.), Chrysanthus et al., 1959^b, p. 52.

Locality. Overijssel: Weerselo (Molenven).

LINYPHIIDAE

Donacochara speciosa (Thorell, 1875)*Donacochara speciosa*, van Helsdingen, 1961, p. 254.

In addition to the specimens from the Van Hasselt Collection material of this species was collected by me at the "Nieuwkoopse plassen" where it was captured in tussocks of sedge.

Localities. Utrecht; Zuid-Holland: Nieuwkoop, Rhoon, Rotterdam; Noord-Brabant: Oisterwijk.

Leptorhoptrum robustum (Westring, 1851)

Specimens of this species have been obtained from a meadow near the IJssel at Voorst (1 ♀, 29.IX.1961; 5 ♀♀, 8.XI.1961).

Locality. Gelderland: Voorst.

Phaulothrix hardyi (Blackwall, 1850)*Phaulothrix hardyi*, van Helsdingen, 1961, p. 254.

Locality. Zuid-Holland: Loosduinen.

Drepanotylus uncatulus (O.P.-Cambridge, 1873)

I have collected only two specimens, amongst wet heather and mos in the "Kootwijkerveen" near Apeldoorn (2 ♀♀, 26/28.IX.1961).

Locality. Gelderland: Apeldoorn (Kootwijkerveen).

¹⁾ This species was not mentioned in the recent work on Micryphantidae by Wiehle (1960^a). I have made no effort to investigate its correct place in Wiehle's classification, so that I have placed it at the end of the present list. For details on the species see Locket and Millidge (1953, pp. 280, 281).

Centromerus incilius (L. Koch, 1881)

Centromerus incilius, van Helsdingen, 1961, p. 254.

Locality. Limburg: Roermond.

Centromerus sylvaticus (Blackwall, 1841)

Centromerus sylvaticus, van der Drift, 1951, p. 120.

Centromerus sylvaticus, Chrysanthus, 1958, p. 143¹⁾.

Centromerus sylvaticus, Chrysanthus et al., 1959^b, p. 55.

Centromerus sylvaticus, van Helsdingen, 1961, p. 254.

Centromerus sylvaticus, Hulsebos, 1962, p. 235.

Localities. Drente: Dwingeloo; Overijssel: Weerselo (Molenven); Gelderland: Hoenderloo; Zuid-Holland: Den Haag; Limburg: Colmond, Roermond.

Centromerus serratus (O.P.-Cambridge, 1875)

One specimen was collected on the Riessenberg near Gronsveld in litter (1 ♀, 20.X.1950).

Locality. Limburg: Gronsveld.

Centromerus prudens (O.P.-Cambridge, 1873)

Centromerus sylvaticus, Chrysanthus, 1953, p. 88.

Centromerus prudens, Chrysanthus, 1954, p. 40.

Centromerus prudens, van Helsdingen, 1961, p. 255.

Centromerus prudens, Hulsebos, 1962, p. 235.

Localities. Drente: Dwingeloo; Zuid-Holland: Loosduinen, Monster; Limburg: Haelen, Roermond.

Centromerus aequalis (Westring, 1862)

Centromerus aequalis, van Helsdingen, 1961, p. 255.

One specimen of this species was also collected at Nijswiller (1 ♀, 18.IV.1951).

Localities. Zuid-Holland: Loosduinen; Limburg: Nijswiller.

Centromerus pabulator (O.P.-Cambridge, 1875)

Centromerus pabulator, Chrysanthus, 1957^b, p. 31.

Locality. Limburg: Wellerlooi.

Centromerus expertus (O.P.-Cambridge, 1870)

Centromerus expertus, Chrysanthus et al., 1959^b, p. 55.

Centromerus expertus, van Helsdingen, 1961, p. 255.

1) The record of *Centromerus sylvaticus* (Blackwall) by Fr. Chrysanthus from Haelen (1953, p. 88) was corrected by himself (1954, p. 40), and the specimen was identified with *Centromerus prudens* (O.P.-Cambridge).

Localities. Drente: Veenhuizen; Overijssel: Weerselo (Molenven); Utrecht: Zeist; Zuid-Holland: Gouda.

Centromerus dilutus (O.P.-Cambridge, 1875)

Centromerus dilutus, van der Drift, 1951, p. 120.

Centromerus dilutus (p.p.), Chrysanthus et al., 1959^b, p. 56.

Centromerus dilutus, van Helsdingen, 1961, p. 255.

Centromerus dilutus (p.p.), Hulsebos, 1962, p. 235.

Chrysanthus's record of *Centromerus dilutus* (O.P.-Cambridge) is only partly correct; the species was confounded with *Lepthyphantes ericaeus* (Blackwall).

The record of *C. dilutus* (O.P.-Cambridge) by Hulsebos (1962, p. 235) is correct in regard to Dwingeloo; the specimen recorded from Meppel, however, appears to belong to *Bathyphantes pullatus* (O.P.-Cambridge).

Localities. Drente: Dwingeloo; Overijssel: Weerselo (Molenven); Gelderland: Apeldoorn, Hoenderloo; Limburg: Roermond.

Centromerus levitarsis (Simon, 1884)

The species was obtained with the aid of a catch-box placed in a moor ("Meerstalblok") near Zwartemeer in the province of Drente (1♀, 1.V.1961).

Locality. Drente: Zwartemeer.

Centromerus alnicola Schenkel, 1936

I have collected this species from sphagnum and grass near the "Brasemermeer" (1♀, 26.III.1961; 1♀, 19.VII.1961). It seems to be a rare species.

Locality. Zuid-Holland: Brasemermeer.

?*Centromerus obscurus* Bösenberg, 1902¹⁾

?*Centromerus obscurus*, de Jong, 1949, p. 212.

Locality. Utrecht: ?Leersum.

Centromerita bicolor (Blackwall, 1833)

Centromerita bicolor, Chrysanthus et al., 1959^b, p. 56.

Centromerita bicolor, van Helsdingen, 1961, p. 255.

Centromerita bicolor, Hulsebos, 1962, p. 235.

The record of *Centromerita bicolor* (Blackwall) by Chrysanthus (1958, p. 143) from Limburg proved to be wrong; the specimens belong to *Centromerita concinna* (Thorell).

1) See footnote p. 9.

Localities. Drente : Diever; Overijssel : Weerselo (Molenven); Zuid-Holland : Loosduinen, Wassenaar.

Centromerita concinna (Thorell, 1875)

- Centromerita bicolor*, Chrysanthus, 1958, p. 143.
Centromerita concinna, Chrysanthus, 1958, p. 143.
Centromerita concinna, Chrysanthus et al., 1959^b, p. 56.
Centromerita concinna, van Helsdingen, 1961, p. 255.
Centromerita concinna, Hulsebos, 1962, p. 235.

Localities. Drente : ?Dwingeloo, ?Diever, ?Havelte; Overijssel : Weerselo (Molenven); Noord-Holland : Texel; Limburg : Kunrade, Roermond, Schin op Geul.

Oreonetides abnormis (Blackwall, 1841)

- Oreonetides abnormis*, Chrysanthus et al., 1959^b, p. 56.
Oreonetides abnormis, Chrysanthus, 1961, p. 40.
Oreonetides abnormis, van Helsdingen, 1961, p. 255.
Oreonetides abnormis, Hulsebos, 1962, p. 235.

Localities. Drente : Dwingeloo; Overijssel : Weerselo (Molenven); Gelderland : Lochem; Zuid-Holland : Loosduinen; Limburg : Heerlen.

Macrargus rufus (Wider, 1834)

- ?*Micryphantes erythrocephalus*, Six, 1858, p. 295.
? *Micryphantes erythrocephalus*, Snellen van Vollenhove, 1859, p. 54.
? *Erigone rufa*, Becker, 1879^a, p. XLIV.
Macrargus rufus, van der Drift, 1951, p. 120.
Macrargus rufus, Chrysanthus, 1957^b, p. 31.
Macrargus rufus, Chrysanthus et al., 1959^b, p. 56.
Macrargus rufus, van Helsdingen, 1961, p. 256.
Macrargus rufus, Hulsebos, 1962, p. 235.

Localities. Drente : Dwingeloo, Diever; Overijssel : Weerselo (Molenven); Gelderland : Hoenderloo; Utrecht : ?De Bilt; Zuid-Holland : ?Loosduinen, ?Wassenaar; Limburg : Wellerlooi.

Syedrula innotabilis (O.P.-Cambridge, 1863)

- Syedrula innotabilis*, Chrysanthus, 1954, p. 39.
Syedrula innotabilis, van Helsdingen, 1961, p. 256.
Syedrula innotabilis, Hulsebos, 1962, p. 235.

Localities. Drente : Dwingeloo; Gelderland : ?Arnhem; Limburg : Broekhuizen.

Agyneta subtilis (O.P.-Cambridge, 1863)

- Agyneta subtilis*, Hulsebos, 1962, p. 235.

The species was also collected by me at Noordwijkerhout (1 ♀, 16.VIII.1962) from amongst pine-litter in the sand-dunes.

Localities. Drente: Dwingeloo; Zuid-Holland: Noordwijkerhout.

Agyneta cauta (O.P.-Cambridge, 1902)

Agyneta cauta, Hulsebos, 1962, p. 235.

Locality. Drente: Dwingeloo.

Agyneta conigera (O.P.-Cambridge, 1863)

Material of this species was found by the author at the "Kootwijkerveen" near Apeldoorn (2 subadult ♂♂, 11.V.1961). The specimens were running about on the bark of a birch. They were kept in captivity and moulted a few days later (15/16.V.1961).

Locality. Gelderland: Apeldoorn (Kootwijkerveen).

Agyneta decora (O.P.-Cambridge, 1870)

Two specimens have been taken by the author from amongst grass and herbage at the sea-side of the sand-dunes at Texel (1 ♂, 9.VII.1960; 1 ♀, 14.VII.1960).

Locality. Noord-Holland: Texel.

Meioneta rurestris (C. L. Koch, 1836)

Meioneta rurestris, Chrysanthus, 1955^a, p. 16.

Mengea warburtoni (p.p.), Hulsebos, 1961, p. 4.

Meioneta rurestris, van Helsdingen, 1961, p. 256.

Meioneta rurestris, Hulsebos, 1962, p. 235.

Localities. Drente: Dwingeloo; Limburg: Kerkrade.

Meioneta saxatilis (Blackwall, 1844)

Meioneta saxatilis, van Helsdingen, 1961, p. 256.

Localities. Zuid-Holland: Loosduinen.

Meioneta mollis (O.P.-Cambridge, 1871)

I took one specimen of this species amongst grass bordering a ditch near the "Brasernermeer" (1 ♂, 21.X.1961). Moreover material has been collected at the "Nieuwkoopse plassen" (1 ♀, 1 ♂, 14.VIII.1962) and at Heerlen (1 ♀, 6.VI.1962).

Localities. Zuid-Holland: Brasernermeer, Nieuwkoop; Limburg: Heerlen.

Meioneta beata (O.P.-Cambridge, 1906)

One specimen was taken by me at Wiessel near Apeldoorn from under a

stone in a fir-wood (1 ♂, 17.VIII.1960). More material comes from the "Kootwijkerveen" near Apeldoorn (1 ♂, 28.IX.1961) and from Heerlen (1 ♀, 6.VI.1962).

Localities. Gelderland: Apeldoorn (Wiessel, Kootwijkerveen); Limburg: Heerlen.

Microneta viaria (Blackwall, 1841)

Microneta viaria, van der Drift, 1951, p. 120.

Microneta viaria, Chrysanthus, 1957^b, p. 31.

Microneta viaria, Chrysanthus et al., 1959^b, p. 55.

Microneta viaria, van Helsdingen, 1961, p. 256.

Microneta viaria, Hulsebos, 1962, p. 235.

Localities. Drente: Dwingeloo; Overijssel: Weerselo (Molenven); Gelderland: Arnhem, Hoenderloo; Limburg: Wellerlooi.

Maro minutus O.P.-Cambridge, 1906

One male specimen was obtained by means of a catch-box in an area covered with sphagnum and heather near Dalen in the province of Drente (1 ♂, 12.VI.1961).

Locality. Drente: Dalen.

Drapetisca socialis (Sundevall, 1832)

?*Meta tigrina*, Six, 1858, p. 293.

?*Linyphia socialis*, Becker, 1879^a, p. XLIII.

Drapetisca socialis, Chrysanthus, 1955^a, p. 16.

Drapetisca socialis, Hulsebos, 1959, p. 254; 1961, p. 4.

Drapetisca socialis, van Helsdingen, 1961, p. 256.

Localities. Friesland: Schiermonnikoog; Drente: Dwingeloo, Emmen; ?Utrecht; Limburg: Roermond, Vijlen.

Tapinopa longidens (Wider, 1834)

Tapinopa longidens, Chrysanthus, 1951^b, p. 98.

Tapinopa longidens, van Helsdingen, 1961, p. 257.

Tapinopa longidens, Hulsebos, 1962, p. 235.

Localities. Drente: Havelte; Overijssel; Gelderland; Utrecht; Limburg: Bunde, Geleen.

Floronia bucculenta (Clerck, 1757)

?*Linyphia bucculenta*, Becker, 1879^a, p. XLIII.

Floronia bucculenta, Chrysanthus, 1951^b, p. 98.

Floronia bucculenta, van Heerdt, 1960, p. 235.

Floronia bucculenta, van Helsdingen, 1961, p. 257.

Localities. Friesland: Terschelling; Gelderland: Winterswijk; ?Utrecht;

Zuid-Holland: Loosduinen, 's Gravensande; ?Zeeland; Noord-Brabant: Breda; Limburg: Brunssum.

Bolyphantes luteolus (Blackwall, 1833)

Bolyphantes luteolus, van Heerdt, 1960, p. 235.

Bolyphantes luteolus, van Helsdingen, 1961, p. 257.

Localities. Friesland: Terschelling; Gelderland: Winterswijk; Zuid-Holland: Loosduinen.

Lepthyphantes nebulosus (Sundevall, 1830)

?*Linyphia circumflexa*, Six, 1858, p. 295.

?*Linyphia nebulosa*, Becker, 1879^a, p. XLIII.

Lepthyphantes nebulosus, van der Hammen, 1950, p. 108.

Lepthyphantes nebulosus, Chrysanthus, 1957^b, p. 31.

Localities. ?Utrecht; Limburg: Heerlen, (cave: Pietersberg).

Lepthyphantes minutus (Blackwall, 1833)

Lepthyphantes minutus, Chrysanthus, 1953, p. 88.

?*Lepthyphantes minutus*, Chrysanthus et al., 1959^b, p. 57.

Lepthyphantes minutus, Hulsebos, 1961, p. 4.

Lepthyphantes minutus, van Helsdingen, 1961, p. 257.

Localities. Drente: Dwingeloo; Overijssel: ?Weerselo (Molenven); Limburg: Grevenbicht.

?*Lepthyphantes alacris* (Blackwall, 1853) ¹⁾

?*Lepthyphantes alacris*, de Jong, 1949, p. 213.

Locality. Gelderland: ?Hulshorst.

Lepthyphantes leprosus (Ohlert, 1865)

?*Lepthyphantes leprosus*, Leruth, 1939, p. 381.

Lepthyphantes leprosus, van der Hammen, 1947, p. 477; 1949, p. 79; 1950, p. 110.

Lepthyphantes leprosus, Chrysanthus, 1951^b, p. 98.

Lepthyphantes leprosus (p.p.), Hulsebos, 1959, p. 254; 1961, p. 4 ²⁾.

Lepthyphantes tenuis (p.p.), Hulsebos, 1959, p. 254.

Lepthyphantes zimmermanni (p.p.), Hulsebos, 1961, p. 4.

Lepthyphantes leprosus, van Helsdingen, 1961, p. 257.

Localities. Friesland: Schiermonnikoog; Drente: Dwingeloo, Meppel; Zuid-Holland: Den Haag, Wassenaar, (hothouses: Delft, Leiden); Limburg: Brunssum, Rijckholt, (caves: Heerderberg, Neercanne, Pietersberg).

1) See footnote p. 9.

2) I have seen only part of the specimens recorded.

Lepthyphantes obscurus (Blackwall, 1841)

Lepthyphantes obscurus, Hulsebos, 1959, p. 254; 1962, p. 235.

Lepthyphantes obscurus, van Helsdingen, 1961, p. 257.

Localities. Friesland: Schiermonnikoog; Drente: Dwingeloo, Veenhuizen; Zuid-Holland: Wassenaar.

Lepthyphantes cristatus (Menge, 1866)

Lepthyphantes cristatus, van Helsdingen, 1961, p. 258.

Also taken by the author from amongst dead leaves and grass at Woold near Winterswijk.

Localities. Gelderland: Winterswijk; Utrecht: De Bilt.

Lepthyphantes tenebricola (Wider, 1834)

?*Linyphia pygmaea*, Becker, 1879^a, p. XLIII.

?*Linyphia tenebricola*, Becker, 1879^c, p. CLXXVI.

Lepthyphantes tenebricola, Chrysanthus, 1958, p. 143.

Lepthyphantes tenebricola, Chrysanthus et al., 1959^b, p. 58.

Lepthyphantes zimmermanni (p.p.), Hulsebos, 1961, p. 4.

Lepthyphantes tenebricola, Hulsebos, 1962, p. 235.

Localities. Drente: Dwingeloo; Overijssel: Weerselo (Molenven); Limburg: Heerlen.

Lepthyphantes tenuis (Blackwall, 1852)

?*Linyphia pygmaea*, Becker, 1879^a, p. XLIII.

Lepthyphantes tenuis, van der Hammen, 1950, p. 111.

Lepthyphantes tenuis (p.p.), Chrysanthus, 1951^b, p. 98.

Lepthyphantes tenuis (p.p.), Chrysanthus et al., 1959^b, p. 57.

Lepthyphantes tenuis (p.p.), Hulsebos, 1959, p. 254; 1961, p. 4.

Lepthyphantes tenuis, van Heerdt, 1960, p. 235.

Lepthyphantes zimmermanni (p.p.), Hulsebos, 1961, p. 4.

Lepthyphantes tenuis, van Helsdingen, 1961, p. 258.

The specimens recorded by Fr. Chrysanthus from Limburg partly belong to the species; the other specimens belong to *Lepthyphantes zimmermanni* Bertkau and *Poeciloneta globosa* (Wider). The specimens recorded from the "Molenven" partly belong to *Lepthyphantes flavipes* (Blackwall). The record by Hulsebos from Schiermonnikoog was partly based on *Lepthyphantes leprosus* (Ohlert).

Localities. Friesland: Terschelling, Schiermonnikoog; Drente: Dwingeloo; Overijssel: Weerselo (Molenven); Gelderland: Wageningen; ?Utrecht; Limburg: Brunssum, Geleen, Rijckholt, Maastricht, (cave: Neercanne).

Lepthyphantes zimmermanni Bertkau, 1890

Lepthyphantes tenuis (p.p.), Chrysanthus, 1951^b, p. 98.

Lepthyphantes zimmermanni, van Helsdingen, 1961, p. 258.

The species has been recorded erroneously from Drente by Hulsebos. The specimens involved belong, however, to the following species: *Lepthyphantes leprosus* (Ohlert), *Lepthyphantes tenebricola* (Wider) and *Lepthyphantes tenuis* (Blackwall).

Locality. Limburg: Rijckholt.

Lepthyphantes mengei Kulczynski, 1887

Lepthyphantes mengei (p.p.), Chrysanthus et al., 1959^a, p. 184; 1959^b, p. 58.

Lepthyphantes mengei, van Helsdingen, 1961, p. 258.

Only part of the specimens recorded by Chrysanthus et al. from the "Molenven" belong to this species; the others belong to *Lepthyphantes flavipes* (Blackwall).

Localities. Overijssel: Weerselo (Molenven); Noord-Brabant: ?Breda.

Lepthyphantes flavipes (Blackwall, 1854)

?*Lepthyphantes concinnus*, de Jong, 1949, p. 213¹⁾.

Lepthyphantes flavipes, van der Drift, 1951, p. 120.

Lepthyphantes flavipes, Chrysanthus, 1957^b, p. 31.

Lepthyphantes tenuis (p.p.), Chrysanthus et al., 1959^b, p. 58.

Lepthyphantes mengei (p.p.), Chrysanthus et al., 1959^a, p. 184; 1959^b, p. 58.

Lepthyphantes flavipes, Chrysanthus et al., 1959^b, p. 58.

Tiso vagans (p.p.), Hulsebos, 1961, p. 4.

Lepthyphantes flavipes, van Helsdingen, 1961, p. 258.

Localities. Drente: Havelte; Overijssel: Weerselo (Molenven); Gelderland: Hoenderloo; Limburg: Watersley, Wellerlooi.

Lepthyphantes angulipalpis (Westring, 1851)

Lepthyphantes angulipalpis, Chrysanthus, 1957^b, p. 31.

Locality. Limburg: Wellerlooi.

Lepthyphantes pallidus (O.P.-Cambridge, 1871)

Lepthyphantes pallidus, van der Hammen, 1950, p. 111.

Lepthyphantes pallidus, Chrysanthus et al., 1959^b, p. 59.

Lepthyphantes pallidus, van Helsdingen, 1961, p. 258.

Localities. Overijssel: Weerselo (Molenven); Gelderland: Nijmegen; Limburg: (caves: Geulhem, Heerderberg, Pietersberg, Valkenburg).

Lepthyphantes ericaeus (Blackwall, 1853)

Lepthyphantes ericaeus, Chrysanthus, 1958, p. 143.

¹⁾ I have not seen the specimen concerned. According to de Jong *Lepthyphantes concinnus* (L. Koch) is synonymous with *Lepthyphantes mengei* Kulczynski. In my opinion his drawing (fig. 3) points, however, to *Lepthyphantes flavipes* (Blackwall).

Centromerus dilutus (p.p.), Chrysanthus et al., 1959^b, p. 56.

Lepthyphantes ericaeus, Chrysanthus et al., 1959^b, p. 58.

Lepthyphantes ericaeus, van Helsdingen, 1961, p. 259.

Localities. Overijssel: Weerselo (Molenven); Gelderland: Nijmegen; Limburg: Heerlen.

Poeciloneta globosa (Wider, 1834)

Lepthyphantes tenuis (p.p.), Chrysanthus, 1951^b, p. 98.

Poeciloneta globosa, Hulsebos, 1961, p. 4.

Poeciloneta globosa, van Helsdingen, 1961, p. 259.

Localities. Drente: Dwingeloo; Gelderland: Nijmegen; Zuid-Holland: Katwijk, Loosduinen, Scheveningen; Limburg: Brunssum.

Porrhomma pygmaeum (Blackwall, 1834)

Porrhomma pygmaeum, Chrysanthus, 1958, p. 144.

Porrhomma pygmaeum, Chrysanthus et al., 1959^b, p. 54.

Localities. Overijssel: Weerselo (Molenven); Limburg: Kerkrade.

Porrhomma egeria Simon, 1884

Porrhomma egeria, Chrysanthus, 1958, p. 144.

Porrhomma egeria, van Helsdingen, 1961, p. 259.

Localities. Limburg: Colmond, Roermond, Schin op Geul.

Porrhomma montanum Jackson, 1913

Porrhomma errans, Hulsebos, 1962, p. 235¹⁾.

This species, with its misleading name, has been recorded from England and Germany. The present record fills up the existing gap.

Locality. Drente: Dwingeloo.

Porrhomma convexum (Westring, 1861)

Porrhomma convexum, Chrysanthus et al., 1959^a, p. 184; 1959^b, p. 54.

Locality. Overijssel: Weerselo (Molenven).

Porrhomma microphthalmum (O.P.-Cambridge, 1870)

Porrhomma microphthalmum, van Helsdingen, 1961, p. 259.

Recently the species was also collected by the author at "De Beer" in the sand-dunes (1 ♀, 1 ♂, 26.II.1961).

Localities. Gelderland: ?Arnhem, Doesburg; Utrecht: ?De Bilt; Zuid-Holland: Rotterdam (De Beer), ?Scheveningen; Noord-Brabant: Breda.

1) As the only record of *Porrhomma errans* (Blackwall) proves to be wrong, the species is not known from our country.

Porrhomma pallidum Jackson, 1913

Porrhomma pallidum, Chrysanthus et al., 1959^a, p. 184; 1959^b, p. 55.

Porrhomma pallidum, van Helsdingen, 1961, p. 259.

Localities. Overijssel: Weerselo (Molenven); Zuid-Holland: Delft.

Porrhomma oblitum (O.P.-Cambridge, 1870)

Porrhomma oblitum, van Helsdingen, 1961, p. 260.

Locality. Zuid-Holland: Nootdorp.

Porrhomma campbelli (F.O.P.-Cambridge, 1894)

Porrhomma campbelli, van Helsdingen, 1961, p. 259.

Locality. Unknown. The specimen was met with in the Collection van Hasselt among specimens labelled *Porrhomma errans* Blw.

Hillhousia misera (O.P.-Cambridge, 1882)

Specimens have been collected by the author at the "Kootwijkerveen" near Apeldoorn (1 ♀, 10.IV.1961; 1 ♀, 1 ♂, 8.V.1961; other females in June and July). In sphagnum, common.

Locality. Gelderland: Apeldoorn (Kootwijkerveen).

Bathyphantes gracilis (Blackwall, 1841)

Bathyphantes gracilis, van der Hammen, 1949, p. 79.

Bathyphantes nigrinus (p.p.), Chrysanthus, 1953, p. 88.

Bathyphantes gracilis, Chrysanthus, 1954, p. 39.

Bathyphantes parvulus, Chrysanthus, 1958, p. 143.

Bathyphantes parvulus, Chrysanthus et al., 1959^b, p. 57.

Bathyphantes gracilis, van Heerdt, 1960, p. 235.

Bathyphantes gracilis, van Helsdingen, 1961, p. 260.

Bathyphantes gracilis, Hulsebos, 1962, p. 235.

Localities. Friesland: Terschelling; Drente: Dwingeloo; Overijssel: Weerselo (Molenven); Gelderland: Nijmegen; Utrecht: (hothouse: Utrecht); Noord-Holland; Zuid-Holland; Noord-Brabant; Limburg: Broekhuizen, Bunde, Grevenbicht, Gronsveld, Heerlen, Kerkrade, Maastricht.

Bathyphantes parvulus (Westring, 1851)

Bathyphantes parvulus, van Helsdingen, 1961, p. 260.

This species has been recorded from several localities in our country, but all the specimens concerned appeared to belong to *Bathyphantes gracilis* (Blackwall). In my opinion the species is, however, not rare, but certainly less common than *Bathyphantes gracilis* (Blackwall). I have collected speci-

mens at Apeldoorn (Hoog Soeren, "Kootwijkerveen", Wiessel) and in the sand-dunes at Meijndel.

Localities. Gelderland: Apeldoorn; Zuid-Holland: Den Haag.

Bathyphantes nigrinus (Westring, 1851)

Bathyphantes nigrinus (p.p.), Chrysanthus, 1953, p. 88.

Bathyphantes nigrinus, van Helsdingen, 1961, p. 260.

Part of the specimens recorded by Chrysanthus from Bunde belong to *Bathyphantes gracilis* (Blackwall).

Localities. Drente: ?Veenhuizen; Limburg: Bunde.

Bathyphantes setiger F.O.P.-Cambridge, 1894

Bathyphantes setiger, Chrysanthus, 1961, p. 40.

Locality. Limburg: Heerlen.

Stylophora concolor (Wider, 1834)

Stylophora concolor, van der Hammen, 1949, p. 79.

Bathyphantes concolor, Chrysanthus, 1955^a, p. 16.

Bathyphantes concolor, Chrysanthus et al., 1959^b, p. 57.

Bathyphantes concolor, Hulsebos, 1961, p. 4.

Stylophora concolor, van Helsdingen, 1961, p. 260.

Localities. Drente: Meppel; Overijssel: Weerselo (Molenven); Gelderland: Nijmegen; Zuid-Holland: Delft, Scheveningen, (hothouses: Delft, Lisse); Limburg: Valkenburg, Wellerlooi.

Bathyphantes approximatus (O.P.-Cambridge, 1870)

Bathyphantes approximatus, Chrysanthus, 1955^a, p. 16.

Bathyphantes approximatus, Chrysanthus et al., 1959^b, p. 57.

Bathyphantes approximatus, van Helsdingen, 1961, p. 261.

Localities. Drente: ?Veenhuizen; Overijssel: Weerselo (Molenven); Limburg: Heerlen, ?Roermond.

Bathyphantes pullatus (O.P.-Cambridge, 1863)

Centromerus dilutus (p.p.), Hulsebos, 1962, p. 235.

This species has not yet been recorded from our country. I have collected it at several localities: Brasemermeer, Nieuwkoopse plassen, Voorne, and the "Empesche en Tondensche heide" near Brummen. It seems to prefer moist places. Adults have been found from May to August.

One specimen, recorded by Hulsebos as *Centromerus dilutus* (O.P.-Cambridge) from Meppel (1962, p. 235) also belongs to the species.

Localities. Drente: Meppel; Gelderland: Brummen; Zuid-Holland: Brasmermeer, Nieuwkoopse plassen, Voorne.

Kaestneria dorsalis (Wider, 1834)

?*Micryphantes quaternus*, Six, 1863, p. 126.
Bathyphantes dorsalis, Hulsebos, 1961, p. 4.
Kaestneria dorsalis, van Helsdingen, 1961, p. 261.

Localities. Drente: Havelte, Ruinerwold, Veenhuizen; Gelderland: Apeldoorn, Nijmegen; Utrecht: Driebergen; Noord-Holland: Valkeveen; Limburg: Roermond.

Stemonyphantes lineatus (Linnaeus, 1758)

?*Bolyphantes trilineatus*, Six, 1858, p. 296.
Stemonyphantes lineatus, van der Hammen, 1950, p. 111.
Stemonyphantes lineatus, Chrysanthus, 1951^b, p. 98.
Stemonyphantes lineatus, Chrysanthus et al., 1959^b, p. 57.
Stemonyphantes lineatus, van Heerdt, 1960, p. 235.
Stemonyphantes lineatus, van Helsdingen, 1961, p. 261.

Localities. Friesland: Terschelling; Overijssel: Weerselo (Molenven); Limburg: Brunssum, Geleen, Pietersberg, Rijckholt, Maastricht, (cave: Pietersberg).

?*Mengea scopigera* (Grube, 1859) 1)

?*Mengea scopigera*, de Jong, 1949, p. 214.

Locality. Friesland: ?Terschelling.

Mengea warburtoni (O.P.-Cambridge, 1889)

Mengea warburtoni, Chrysanthus et al., 1959^a, p. 184; 1959^b, p. 59.
Mengea warburtoni (p.p.), Hulsebos, 1961, p. 4.

Part of the material recorded by Hulsebos from Drente belongs to *Meioneta rurestris* (C. L. Koch).

Localities. Drente: Beilen; Overijssel: Weerselo (Molenven).

Helophora insignis (Blackwall, 1841)

?*Linyphia insignis*, de Jong, 1949, p. 214.
Helophora insignis, Chrysanthus, 1955^a, p. 16.

Localities. Zuid-Holland: ?Voorne; Limburg: Heerlen.

Labulla thoracica (Wider, 1834)

Labulla thoracica, Chrysanthus, 1958, p. 143.

Locality. Limburg: Heerlen.

1) See footnote p. 9.

Linyphia emphana Walckenaer, 1841

Linyphia emphana, Chrysanthus, 1951^b, p. 98.

The species has also been found by the author in woods on the Veluwe, where it is quite abundant.

Localities. Gelderland: Veluwe; Limburg: Heerlen.

Linyphia peltata Wider, 1834

?*Linyphia peltata*, de Jong, 1949, p. 214.

Linyphia peltata, Chrysanthus, 1951^b, p. 98.

Linyphia peltata, van Heerdt, 1960, p. 235.

Localities. Friesland: Terschelling; Gelderland: ?Kotten; Noord-Brabant: ?Ulvenhout; Limburg: Brunssum.

Linyphia triangularis (Clerck, 1757)

Linyphia triangularis, van der Hammen, 1949, p. 79.

Linyphia triangularis, Chrysanthus, 1951^b, p. 98.

Linyphia triangularis, Chrysanthus et al., 1959^b, p. 59.

Linyphia triangularis, Hulsebos, 1959, p. 254; 1961, p. 4.

Linyphia triangularis, van Heerdt, 1960, p. 235.

Linyphia triangularis, van Helsdingen, 1961, p. 261.

Localities. Friesland: Schiermonnikoog, Terschelling; Drente: Emmen, Havelte, Dwingeloo, Meppel; Overijssel: Weerselo (Molenven); Zuid-Holland: (hothouse: Leiden); Limburg: Gronsveld, Maastricht, Neercanne, Pietersberg, Rijckholt.

Linyphia montana (Clerck, 1757)

?*Linyphia resupina*, Six, 1858, p. 294.

?*Linyphia montana*, Six, 1858, p. 295.

?*Linyphia montana*, Snellen van Vollenhove, 1859, p. 53.

?*Linyphia montana*, Becker, 1879^a, p. XLIII.

?*Linyphia resupina*, Becker, 1879^a, p. XLIII.

Linyphia montana, van der Hammen, 1949, p. 79.

Linyphia montana, Chrysanthus, 1951^b, p. 98.

Linyphia montana (p.p.), Hulsebos, 1959, p. 254; 1961, p. 4.

Linyphia clathrata, Hulsebos, 1961, p. 4.

Linyphia montana, van Helsdingen, 1961, p. 261.

Hulsebos appears to have sometimes confounded *Linyphia montana* (Clerck) and *Linyphia clathrata* Sundevall with each other.

Localities. Friesland: Schiermonnikoog; Drente: Dwingeloo, Havelte, Meppel, Ruinerwold; ?Gelderland; Utrecht: (hothouse: Baarn); ?Noord-Brabant; Limburg: Brunssum, Rijckholt, Wahlwiller.

Linyphia clathrata Sundevall, 1830

?*Linyphia multiguttata*, Six, 1858, p. 295; 1863, p. 125.

?*Linyphia clathrata*, Becker, 1879^a, p. XLIII.

- Linyphia clathrata*, Chrysanthus, 1951^b, p. 98.
Linyphia clathrata, Chrysanthus et al., 1959^b, p. 59.
Linyphia clathrata, Hulsebos, 1959, p. 254.
Linyphia montana (p.p.), Hulsebos, 1959, p. 254.
Linyphia clathrata, van Helsdingen, 1961, p. 261.

Localities. Friesland: Schiermonnikoog; Overijssel: Weerselo (Molenvan); Utrecht: ?De Bilt; Limburg: Brunssum, Neercanne.

Linyphia hortensis Sundevall, 1829

- ?*Linyphia frutetorum*, Six, 1858, p. 295.
 ?*Linyphia frutetorum*, Becker, 1879^a, p. XLIII.
Linyphia hortensis, Chrysanthus, 1958, p. 144.
Linyphia hortensis, van Helsdingen, 1961, p. 262.

Localities. Utrecht: ?De Bilt; Limburg: Heerlen.

Linyphia impigra O.P.-Cambridge, 1870

- ?*Linyphia impigra*, de Jong, 1949, p. 214.

The author has also collected specimens of this species near the "Nieuwkoopse plassen" and near the "Brielse Maas", in vegetation near the water.

Localities. ?N.O.-polder; Zuid-Holland: Nieuwkoopse plassen, Oost-Voorne.

Linyphia pusilla (Sundevall, 1830)

- ?*Linyphia pratensis*, Six, 1858, p. 295.
 ?*Linyphia pusilla*, Becker, 1879^a, p. XLIII.
Linyphia pusilla, Chrysanthus, 1951^b, p. 98.
Linyphia pusilla, van Helsdingen, 1961, p. 262.

Localities. Utrecht: ?Driebergen; Limburg: Brunssum, Rijckholt.

Linyphia furtiva O.P.-Cambridge, 1871

This species was not yet recorded from our country. It appears, however, to be not uncommon. Material has been collected by me at Heerlen (6 ♀♀, 6 ♂♂, 6.VI.1962) and from several localities near Apeldoorn (Hoog Soeren, Hoog Buurloo). At these localities the species was taken from amongst heather, particularly on heaths with young pine-trees.

Localities. Gelderland: Apeldoorn (Hoog Soeren, Hoog Buurloo); Limburg: Heerlen.

Linyphia hammeni van Helsdingen, 1963

- Linyphia hammeni*, van Helsdingen, 1963, p. 153.

Locality. Limburg: Heerlen.

Taranuncus setosus (O.P.-Cambridge, 1863)

Material of this species was taken at Hoog Soeren near Apeldoorn (1 ♀, 13.IX.1958) in dry heath. The species was also collected in the "Kootwijkerveen" near Apeldoorn, where both sexes were taken, from spring till winter, in very wet vegetation.

Locality. Gelderland: Apeldoorn and surroundings.

SOME NOTES ON THE GENUS *LEPHYPHANTES* MENGE, 1866

Identification of the species of this genus is, in some cases, a difficult task. Although it is much facilitated by the work of Wiehle (1956), some difficulties still remain.

Within the group of *Lepthyphantes tenuis* (Blackwall) the epigyne consists of a scape, anteriorly constricted and widened in the terminal part, and of an underlying plate visible at both sides of the terminal part of the scape. This plate (p), which is very conspicuous in *Lepthyphantes zimmermanni*

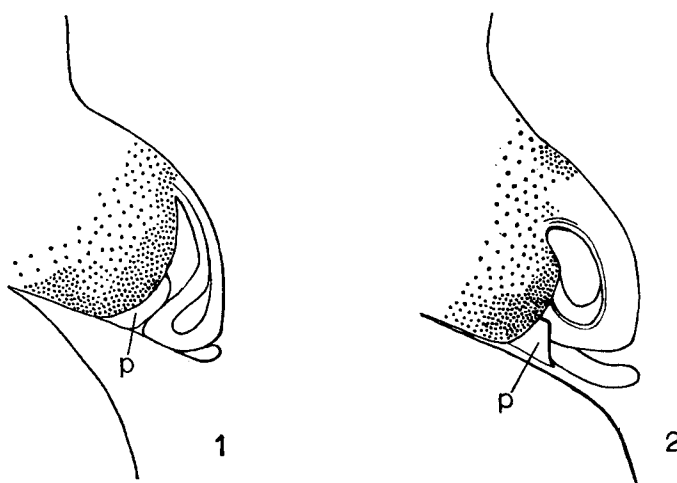


Fig. 1: *Lepthyphantes cristatus*, epigyne, lateral view, $\times 120$. Fig. 2: *L. tenuis*, idem.

Bertkau, is present in all species of this group, and clearly visible in a lateral view of the epigyne. Wiehle (1956), in his figures of the lateral views of the epigynes of *Lepthyphantes cristatus* (Menge) and *Lepthyphantes tenuis* (Blackwall) (figs. 321 b, 332 b) erroneously omitted this plate, for which reason I have prepared new figures of the epigynes of these species in order to facilitate identification (figs. 1 and 2).

The male specimens are mainly to be identified by means of (a) the shape of lamella characteristica and paracymbium, and (b) the position, size and

shape of teeth on the latter. This presents, however, some difficulties with two species: *Leptyphantes mengei* Kulczynski and *L. flavipes* (Blackwall). According to Locket & Millidge (1953, p. 387, figs. 231A-F) the single tooth on the paracymbium is, when examined from the outside and from

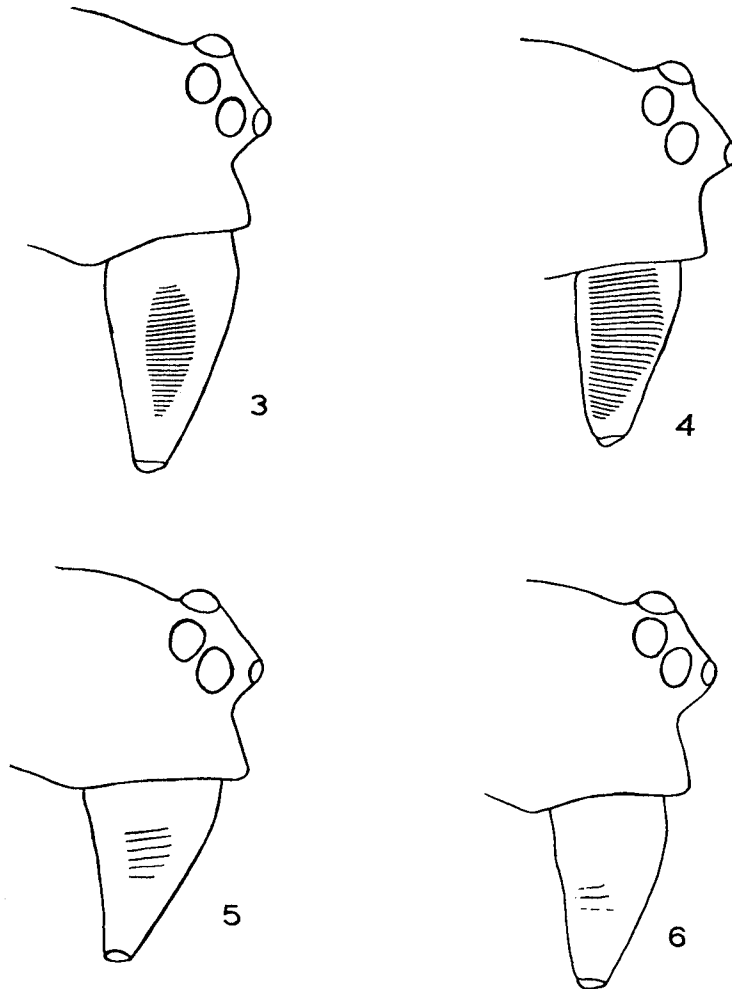


Fig. 3: *Leptyphantes mengei*, anterior part of male cephalothorax with chelicerae, lateral view, $\times 80$. Fig. 4: idem, female. Fig. 5: *L. flavipes*, male, idem. Fig. 6: idem, female.

above, slightly pointed in outline in *L. flavipes* (Blackwall), and slightly conical in *L. mengei* Kulczynski. Also the palpal tarsus and tibia of *L. flavipes* (Blackwall) are a little darker than those of *L. mengei* Kulczynski. Wiehle mentions the same characters.

In my opinion the outline of this tooth depends on the angle under which we examine the palp; moreover, the tooth is not easy to distinguish, because it is very small. In examining the two species concerned, I discovered, however, a striking difference in the stridulating files at the outside of the chelicerae.

In the female of *L. mengei* Kulczynski the stridulating striae are situated close together on the light-brown chelicerae, and quite conspicuous (fig. 3). In the male they are even more pronounced (fig. 4); the distal part of the lamella characteristica of the palp is sickle-shaped.

In the female of *L. flavipes* (Blackwall) the distance between the striae is much larger (fig. 5), and the pigmentation of the chelicerae is much darker, as in the palpal joints of the male. In the male the striae are either absent or very indistinct (fig. 6), and the chelicerae are strongly pigmented; the distal part of the lamella characteristica of the palp is straight, forming a right angle with the proximal part.

It is evident that examination of the stridulating files considerably facilitates the identification of the two species, especially as to the males.

REFERENCES

- BECKER, L., 1879^a. Aranéides de Néerlande. Ann. Soc. Ent. Belg., vol. 22, C.R., pp. XXXIX-XLVII.
 —, 1879^b. Aranéides nouveaux pour la faune néerlandaise. Ibid., vol. 22, C.R., p. CXXXIX.
 —, 1879^c. Espèces nouvelles d'Aranéides de Néerlande. Ibid., vol. 22, C.R., p. CLXXXVI.
 CHRYSANTHUS, P., 1951^a. Enige goede spinnevangsten uit Zuid-Limburg. Natuurhist. Mbl., vol. 40, no. 6, p. 77.
 —, 1951^b. Spinnen uit Limburg. Ibid., vol. 40, no. 9, pp. 97-100.
 —, 1953. Spinnen uit Limburg II. Ibid., vol. 42, no. 9, pp. 87, 88.
 —, 1954. Spinnen uit Limburg III. Ibid., vol. 43, no. 5, pp. 39, 40.
 —, 1955^a. Spinnen uit Limburg IV. Ibid., vol. 44, no. 1/2, p. 16.
 —, 1955^b. Spinnen, nieuw voor de Nederlandse fauna (Aran.). Ent. Ber., vol. 15, no. 22, p. 494.
 —, 1957^a. Enkele merkwaardige spinnen. Ent. Ber., vol. 17, no. 3, pp. 44, 45.
 —, 1957^b. Spinnen uit Limburg V. Natuurhist. Mbl., vol. 46, no. 3/4, p. 31.
 —, 1958. Spinnen uit Limburg VI. Ibid., vol. 47, no. 11/12, pp. 143, 144.
 —, 1961. Spinnen uit Limburg VII. Ibid., vol. 50, no. 3/4, p. 40.
 CHRYSANTHUS, P., DAMME, E. N. G. VAN & NAAKTGEBOREN, C., 1959^a. Enige nieuwe Spinnensoorten voor de Nederlandse fauna. Ent. Ber., vol. 19, no. 9, pp. 182-185.
 —, 1959^b. Verslag van het onderzoek Molenven-Saasvelderveen. RIVON-publicatie, pp. 1-118.
 DRIFT, J. VAN DER, 1951. Analysis of the animal community in a beech forest floor. Tijdschr. Entom., vol. 94, pp. 1-168, figs. 1-16.
 HAMMEN, L. VAN DER, 1947. Opiliones en Araneae uit Zuidlimburgsche Grotten. Tijdschr. Entom., vol. 87, pp. 477-481, figs. 1, 2.
 —, 1949. On Arachnida collected in Dutch Greenhouses. Tijdschr. Entom., vol. 91, pp. 72-82.

- , 1950. The Arachnida of the artificial caves in Southern Limburg (Netherlands). *Natuurhist. Mbl.*, vol. 39, no. 10, pp. 108-113.
- HASSELT, A. W. M. VAN, 1885. *Catalogus Araneorum hucusque in Hollandia inventarum*. *Tijdschr. Entom.*, vol. 28, pp. 113-188.
- , 1886. Id., *Supplementum I*. *Ibid.*, vol. 29, pp. 103-110.
- , 1890. Id., *Supplementum II*. *Ibid.*, vol. 33, pp. 181-214.
- , 1898. Id., *Supplementum III*. *Ibid.*, vol. 41, pp. 46-76.
- HEERDT, P. F. VAN, 1960. A biocenological investigation in the yellow dune region of Terschelling. *Tijdschr. Entom.*, vol. 103, pp. 225-275, figs. 1-8.
- HELSDINGEN, P. J. VAN, 1961. Revision of the Micryphantidae and Linyphiidae (Araneida) of the van Hasselt Collection. *Zool. Med.*, vol. 37, no. 16, pp. 241-263.
- , 1963. *Linyphia hammeni*, a new species, and its relation to *Linyphia albolimbata* Karsch (Araneida, Linyphiidae). *Proc. Kon. Ned. Ak. Wet.*, ser. C, vol. 66, no. 2, pp. 153-156, figs. 1-8.
- HULSEBOS, J., 1959. Spinnen van Schiermonnikoog. *Ent. Ber.*, vol. 19, no. 12, pp. 253, 254.
- , 1961. Spinnen uit Drente (I). *Ibid.*, vol. 21, no. 1, pp. 2-4.
- , 1962. Spinnen uit Drente (II). *Ibid.*, vol. 22, no. 12, pp. 233-235.
- JONG, B. DE, 1949. Bijdrage tot de kennis van de Nederlandse Spinnenfauna (Araneae). *Bijdr. Dierk.*, vol. 28, pp. 212-217, figs. 1-4.
- LERUTH, R., 1939. La Biologie du domaine souterrain et la Faune cavernicole de la Belgique. *Mém. Mus. Hist. Nat. Belg.*, vol. 87, pp. 369-388.
- LOCKET, G. H. & MILLIDGE, A. F., 1953. *British spiders*. Vol. II. *Publ. Ray. Soc.*, vol. 137, pp. 1-449, figs. 1-254.
- , 1962. The identity of *Entelecara erythropus* (Westring) and *E. media* Kulcz. (Araneae). *Ann. Mag. Nat. Hist.* (13), vol. 5, pp. 28, 29.
- PICKARD-CAMBRIDGE, O., 1884. Descriptions of two new species of Walckenaera, Blackwall. *Ann. Mag. Nat. Hist.* (5), vol. 14, p. 91, pl. IV fig. 2.
- SIX, G. A., 1858. Lijst van Spinnen uit Utrecht. In: HERKLOTS, *Bouwstoffen voor eene fauna van Nederland*, vol. 2, pp. 292-302.
- , 1863. Nieuwe bijdrage tot de kennis der inlandse spinnen. *Tijdschr. Entom.*, vol. 6, pp. 124-128.
- SNELLEN VAN VOLLENHOVE, S. C., 1859. *Natuurlijke Historie van Nederland*. De dieren van Nederland. Overzicht der gelede dieren. Haarlem, vol. 1, pp. 1-558.
- WIEHLE, H., 1956. Spinnentiere oder Arachnoidea (Araneae). 28. Familie. Linyphiidae-Baldachinspinnen. *Tierw. Deutschl.*, vol. 44, pp. 1-335, figs. 1-551.
- , 1960^a. Spinnentiere oder Arachnoidea (Araneae). XI: Micryphantidae-Zwergspinnen. *Tierw. Deutschl.*, vol. 47, pp. 1-615, figs. 1-1147.
- , 1960^b. Beiträge zur Kenntnis der deutschen Spinnenfauna. I. Linyphiidae. *Zool. Jahrb., Syst.*, vol. 88 (2), pp. 195-228, figs. 1-45.