



# Prophyll, calyculus, and perianth in *Santalales*

J. Kuijt<sup>1</sup>

## Key words

biseriate corolla  
calyculus  
prophyll  
*Santalales*

**Abstract** The concepts of prophyll and calyculus in *Santalales* are reviewed, and are found to be of variable taxonomic importance in different families. The calyculus in *Loranthaceae* has been generally interpreted as a reduced calyx, a concept recently challenged by Wanntorp & Ronse De Craene (2009), who concluded that it represents a fusion of prophylls. This view, as well as the accompanying biseriate corolla notion, is rejected. In *Loranthaceae*, prophylls associated with flowers have sometimes provided significant taxonomic features, while in *Viscaceae* this is true mostly in the vegetative portions of plants, especially in *Arceuthobium*, *Dendrophthora* and *Phoradendron*.

**Published on** 1 February 2013

## INTRODUCTION

The Sandalwood order (*Santalales*) has been the subject of several significant studies in recent years. Most of these studies have dealt with the phylogenetic history of the order and its multiple components, especially the work of Nickrent et al. (2010). However, one of these contributions has instead focused on the structural elements related to flowers (Wanntorp & Ronse De Craene 2009), and has resulted in some novel interpretations. It is the purpose of the present contribution to subject these interpretations to scrutiny.

The significant questions raised by Wanntorp & Ronse De Craene (2009) revolve around three apparently distinct structural issues. There is, first of all, the status and occurrence of prophylls as defined below. Secondly, there is the erect rim of tissue crowning the ovary of many but not all members of the order that is known as the calyculus. It has perhaps been the most controversial morphological structure in the order, attracting various interpretations in the past. The third issue raised by Wanntorp & Ronse De Craene is whether the corolla represents a single or a double whorl of elements. As will be seen below, these three issues are linked by various interpretations. I begin with a brief summary of the systematic occurrence of prophylls and the calyculus in *Santalales*.

In referring to families in *Santalales*, it is first necessary to deal with its recent reorganization as proposed by Nickrent et al. (2010). These authors, largely on the basis of molecular data, recognized 12 families, 4 of which are newly proposed. Crucially, the family *Santalaceae* is subdivided into 5 separate families. A detailed critique of this reorganization falls outside the scope of the present article. However, since the family descriptions are not adequately differentiated and contain important errors or undocumented statements, such as the supposed presence of the calyculus in '*Nanodeaceae*', I here prefer to maintain the traditional concept of *Santalaceae*. The continued use of paraphyly in plant systematics has been substantially defended by Brummitt (2006), Nordal & Stedje (2005), and especially Zander (2011). Since my taxonomic expertise is essentially limited to the mistletoes and *Santalaceae*, I am using other family names from the Nickrent et al. (2010) treatment, but without prejudice.

## PROPHYLLS

Even though the term 'prophyll' is often equated to 'bracteole', it has a more precise meaning, namely one of the two often minute foliar organs that flank axillary axes in angiosperms, whether flowers, inflorescences, or vegetative ramifications. The term 'bracteole' is used inconsistently in literature; they are usually associated with flowers, while prophylls do not share that limitation. As will be seen below, prophylls are exceptionally important in Viscacean taxonomy, while bracteoles there are non-existent. In *Loranthaceae* the obverse is true: prophylls associated with flowers are extremely important in defining genera in the New World, but those found at the base of vegetative axes are usually ignored. Only occasionally are they prominent in that position, as in some species of *Psittacanthus* (Kuijt 2009); the sharply pointed prophylls in the leaf axils of *Tristerix* appear to be a generic feature (Kuijt 1988b, see f. 16e). Curiously, the verticillate branching pattern in *Psittacanthus* may occasionally indicate that prophylls do indeed exist there even though they may be scarcely recognizable; as mentioned for *Arceuthobium* (*Viscaceae*) below, even scarcely recognizable prophylls may subtend axillary ramifications.

Being very inconspicuous, it is not surprising that prophylls have not been mentioned in descriptions of the majority of Santalalean taxa. It is entirely possible that prophylls do not exist in some or all of a number of families. This applies, as far as I know, to *Aptandraceae*, *Coulaceae*, *Erythrolaceae*, *Octoknemaceae*, *Olacaceae*, *Schoepfiaceae*, *Strombosiaceae* and *Ximeniaceae*. It is perhaps true for many *Santalaceae* as well, with exceptions seen in many species of *Thesium* and especially in *Thesidium*, where each flower is flanked by a pair of large prophylls (Pilger 1935, f. 40). The same author writes: "Meist sind zwei seitliche Vorblätter vorhanden", but this is not borne out in the various generic descriptions.

## *Loranthaceae*

The loranthaceous material used in Wanntorp & Ronse De Craene's (2009) study consists of one species each of *Passovia* ('*Phthirusa*') and *Struthanthus*. Each of these genera is characterized by inflorescences bearing various numbers of paired, lateral triads. A triad consists of one central flower subtended by the primary bract (called *pherophyll* by Wanntorp & Ronse

<sup>1</sup> Department of Biology, University of Victoria, Victoria, BC V8W 3N5, Canada; e-mail: jkuijt@uvic.ca.

De Craene) and a pair of flowers positioned in the axils of its prophylls. Triads may be pedunculate or essentially sessile on the inflorescence axis. It should be added that the term 'dichasium' applied by Wanntorp & Ronse De Craene to lateral triads has also been variously circumscribed in botanical literature (Lawrence 1951, Endress 2010).

The relevant new interpretation that the authors advance, apparently based on SEM images, is that the prophylls of a loranthaceous flower fuse to form its calyculus, as is also said to be the case in *Olacaceae*. There is abundant evidence in the known structure especially of neotropical small-flowered *Loranthaceae* to the effect that this interpretation (which here will be called the 'prophyllar hypothesis') has flaws and is difficult to reconcile with the relevant literature, as detailed below.

#### *The structure of triads and dyads*

When studying the triads of *Struthanthus* and *Passovia* as well as those of other *Loranthaceae*, it is immediately obvious that their prophylls are physically far removed from the ovary of the median flower. It follows that there cannot have been a developmental connection between prophylls and calyculus. This is true not only for triadic small-flowered genera (all of which are neotropical), but also for *Psittacanthus*, *Tripodanthus* and others where the lateral flowers of triads (or, in *Aetanthus* and some *Psittacanthus* species, dyads) are placed on elongated pedicels. In such cases, there is no evidence that the prophylls of the triad or dyad have a developmental relationship to any of the calyculi.

#### *Monads*

Many genera, both in the New and Old World, develop inflorescences bearing single lateral flowers (monads). In many cases (*Cladocolea*, *Tristerix*, *Loranthus*, the upper inflorescence portions of *Peristethium*, etc.) flowers show no evidence of associated prophylls. In other genera, however, each flower is accompanied by a distinctive pair of prophylls; such is the case in *Maracanthus* (Kuijt 1976a), *Oryctanthus* (Kuijt 1976b), *Oryctina* (Kuijt 1981a), *Dendropemon* (Kuijt 2011a), two species of *Tristerix* (Kuijt 1988b) and *Panamanthus* (Kuijt 1991). In all these cases, a regular calyculus is formed without any developmental involvement by prophylls.

#### *Terminal flowers*

Inflorescences that are morphologically terminated by a single flower are known in a number of genera (Kuijt 1981b), for example in *Loranthus*, *Cladocolea* (Kuijt 1975), *Peristethium* (Kuijt 2012) and at least two *Struthanthus* species. Prophylls by definition are the first two phyllomes of a branch and thus do not accompany terminal flowers. In such inflorescences it would be difficult to assert that the calyculus of a lateral flower would have a different morphological origin from that of a terminal flower.

#### *Phthirusa*

Almost uniquely in *Phthirusa*, inflorescences are absent, the flowers being sessile in leaf axils, often in clusters. Each flower is associated with a distinctive pair of prophylls (Kuijt 2011b), which again, cannot have been developmentally involved with the formation of the ovary and its calyculus.

#### *Single pedicellate flowers*

In *Ligaria* and *Sogerianthe*, the individual flowers are stalked, no inflorescence being present, and the possibility that we are concerned with greatly reduced inflorescences remains. In any case, where prophylls are present, the calyculus is far removed from them.

### *Viscaceae*

While in *Loranthaceae* prophylls appear to be of minor significance in the vegetative parts of plants, this is not so in several genera of *Viscaceae*. Nevertheless, here also they have not been given adequate attention. In *Ginalloa* and *Notothixos* they have not been mentioned in the relevant literature, even though the inflorescences in the former genus appear to bear them, as in the axillary 'triads' mentioned and illustrated in Barlow (1997), where they subtend secondary lateral flowers. In *Korthalsella* we find an unclear situation in flower-bearing regions (the concept 'inflorescence' itself is not always applicable in the genus) but, again, there is no published record of prophylls in vegetative parts of the plant (Barlow 1997). In fact, Mekel (1935) explicitly denies the presence of any prophylls in the axillary groups of flowers.

#### *Viscum*

There appears to be no previous mention of prophylls in the extensive literature on *Viscum*. This is surprising in what is the most famous, and most written-about of all mistletoes, *V. album* L. In *V. album*, there are regular, annual innovations of one internode each, topped by one pair of foliage leaves and a terminal inflorescence. At the very base of each innovation, there is one pair of minute, translucent, fimbriate prophylls. These structures are visible even during the winter, well before new innovations have started to elongate, and turn blackish in later years (Fig. 1a). In the axil of each prophyll, an inflorescence often develops in the next growing season. It seems safe to assume that other species of *Viscum*, even though most have a very different branching pattern, also have prophylls in comparable locations. Thus the position of later inflorescences can demonstrate the presence of prophylls.

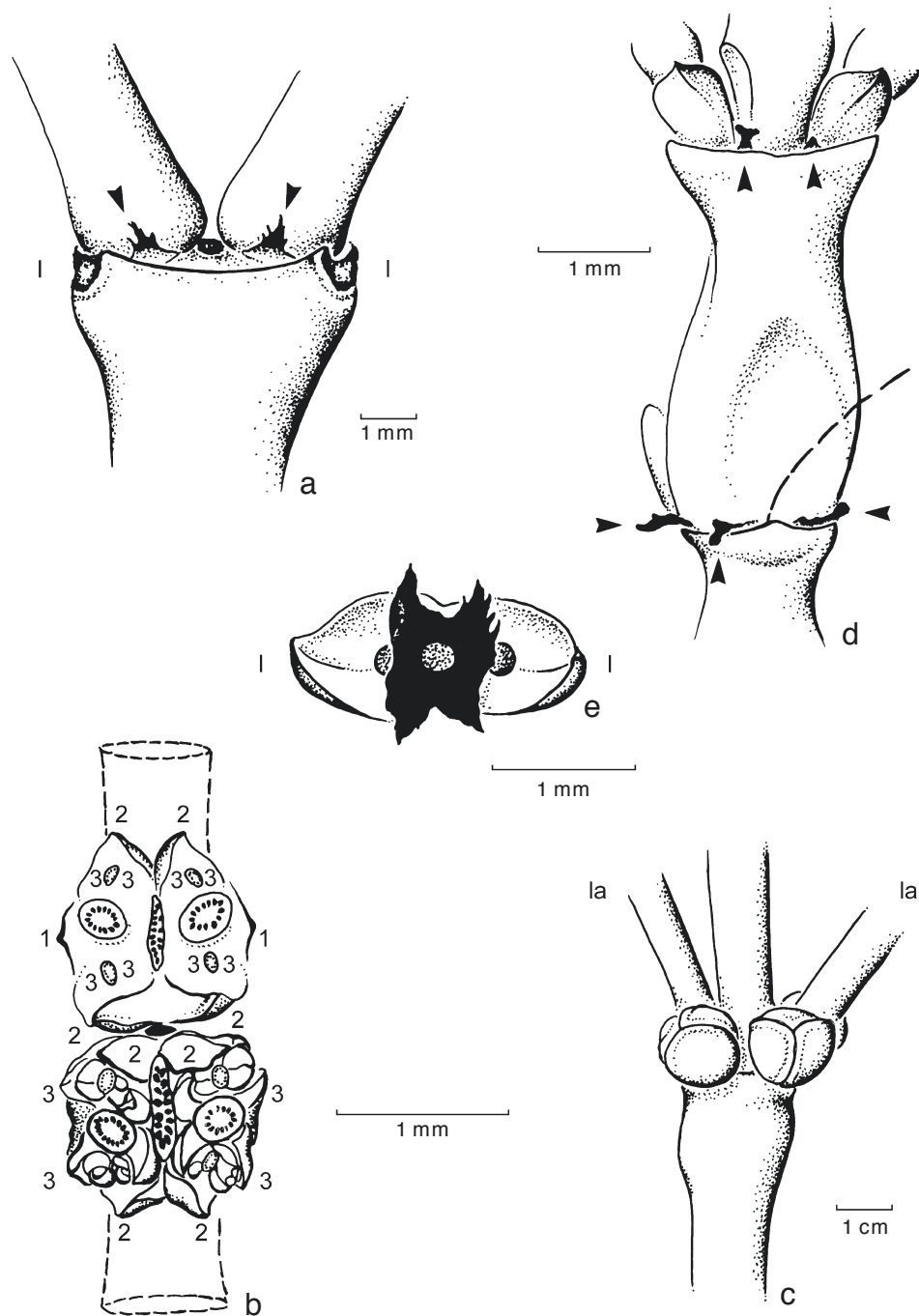
#### *Dendrophthora and Phoradendron*

It is important to realize that, in contrast to the view of Eichler (1868), prophylls in *Phoradendreae* are distinct from any so-called basal cataphylls that may also be present. Basal cataphylls are pairs of leaf scales placed at the base of lateral ramifications in many species in both genera (Kuijt 2003), but they occur in addition to, and distal to, the prophylls. In those species that lack basal cataphylls, prophylls are nevertheless present. In a few species of *Dendrophthora*, the prophylls of a lateral branch may be fused to form a compound structure (Kuijt 1959). Especially in those species of *Phoradendron* where innovations abort terminally (dichotomous species), such prophylls usually subtend inflorescences or vegetative branches. These ramifications themselves are again provided with prophylls, etc., resulting in a highly complex but extremely regular, symmetrical grouping (Fig. 1b). The degree of prominence and the shape of prophylls, particularly in *Dendrophthora*, may provide important specific features taxonomically.

#### *Arceuthobium*

As far as I am aware, no mention of prophylls has appeared in the literature dealing with *Arceuthobium*. As in all *Viscaceae*, phyllotaxy is paired. Branching patterns in the genus are of two types, flabellate and verticillate (Kuijt 1970), and this has led Hawksworth & Wiens (1970) to recognize two subgenera, subgenus *Vaginata* Hawksw. & Wiens and subgenus *Arceuthobium*, respectively. In the flabellate pattern, younger, secondary lateral branches are added abaxially to the primary one, so that a flat, fan-like arrangement results. No prophylls are present.

The branching pattern in male *A. americanum* Nutt. ex Engelm. is essentially a replica of that of *Viscum album*, with one important difference: there is no sign of even minute prophylls, even though the relevant secondary branches develop in the expected positions, flanking the primary lateral branches (Fig. 1c). A second



**Fig. 1** Prophylls in *Viscaceae*. – a. *Viscum album*, male (Victoria, British Columbia). A year-old node, mid winter. Arrows point to the two visible prophylls. The central scar is that of last year's inflorescence, the scars of last year's leaves are indicated with 'l'. – b. *Phoradendron nitens*, a dichotomous species (redrawn from Kuijt 1969). The aborted apex (centre) is shown in black; foliage leaves in broken lines. Three numbered, successive generations of prophylls, flanking their inflorescence scars, are shown in the upper half of the figure, where most prophylls have been removed. – c. *Arceuthobium americanum*, male (Moyie, British Columbia). One type of verticillate branching, with two primary lateral branches (la) and four flower buds (one invisible) occupying prophyllar positions. No prophylls are present. – d. *Arceuthobium azoricum*, male (Wiens 4953, MO). View of an internode, the nearest lateral branch removed (broken line). Prophylls black (arrows). – e. *Arceuthobium azoricum*, male (Wiens 4953, MO). Top view of a node such as the upper one of Fig. 1d, two lateral stems and the percurrent one removed (shaded). The four prophylls (black) are fused into a single, compound structure.

difference is that female *A. americanum* has a percurrent stem system, while *V. album* is uniformly dichotomous by means of a terminal inflorescence. (The verticillate branching pattern illustrated in Hawksworth & Wiens (1996, f. 2-1d) is incorrect).

Another species, *A. azoricum* Hawksw. & Wiens, an endemic to the Azores, is said to be "crucial to an understanding the migrational history of the genus" (Nickrent et al. 2004). The species is also characterized by verticillate branching, as are the related *A. oxycedri* (DC.) M.Bieb. from Eurasia and Africa and *A. juniperi-proceræ* Chiov. from Ethiopia and Kenya (Hawksworth & Wiens 1976). The whorled female flowers of *A. azoricum* are said to be subtended by 'minute bracts' but, unfortunately,

no details are available, and I have not been able to inspect female material. A comparison of male *A. azoricum* with the North American *A. americanum* leads to some intriguing facts. The main branching pattern of *A. azoricum* is identical to that of *A. americanum*; but here, each secondary lateral is subtended by a minute prophyll that emerges slightly from above the nearby leaf scale (Fig. 1d). These prophylls are black or nearly so (Fig. 1d, e), and may be basally fused into a single, compound structure (Fig. 1e). They are almost entirely hidden by the associated leaf scales, usually extending for no more than 0.5 mm beyond them. The tip of a prophyll may be acute and fimbriate, or it may be blunt to laterally expanded. The existence of prophylls in this



species almost certainly means that the *A. americanum* ancestry also had prophylls in the relevant positions, and that they have been eliminated in the past, even though its 'axillary' secondary branches do form. That leaves us with the remarkable notion of 'phantom prophylls', organs that have disappeared in the course of evolution while their morphogenetic influence has remained. Endress (2010) lists a number of comparable instances of this phenomenon in angiosperms.

#### *Eremolepidaceae*

Flowers of *Eremolepidaceae* lack prophylls throughout (Kuijt 1988a).

#### *Prophylls in non-mistletoe families*

While I cannot judge the data and illustrations provided by Wanntorp & Ronse De Craene (2009) for '*Olacaceae*' (*Diogoa*, *Heisteria* and *Olex*), there are convincing indications that in non-mistletoe families the prophyllar hypothesis must also be rejected. In those flowers where undeniable calyculi develop (sometimes after anthesis), non-articulated pedicels support them, thus making the idea of any morphogenetic contribution by even very small or unnoticed prophylls a very questionable and remote proposition.

### CALYCLUS

The presence and morphological interpretation of the calyculus in *Santalales* has been controversial, as already indicated above. Where present, it is a rim or outgrowth from the top of the ovary, sometimes developing after anthesis to envelop the fruit partly or entirely (Kuijt 1969, Sleumer 1984). It has mostly been regarded as a reduced calyx, but Engler & Krause (1935) considered it an outgrowth of the receptacle, and Venkata Rao (1964) introduced the idea that its origin lies in a vestigial whorl of bracts. The views of Wanntorp & Ronse De Craene (2009) have been outlined above. Significantly, it is in the most basal genera of *Loranthaceae* that vasculature has been reported in the calyculus (*Atkinsonia*: Van Tieghem 1895, Garg 1958; *Desmaria* and *Gaiadendron*: Van Tieghem 1895; *Nuytsia*: Narayana 1958). Late developing calyculi such as those in *Heisteria* (*Olacaceae*) develop a profuse system of vasculature.

In *Eremolepidaceae*, *Misodendraceae* and *Viscaceae* the calyculus is absent. It is true that Schaeppi & Steindl (1945) report its presence especially in the female flowers of *Viscum*, but this appears to refer to no more than a slight constriction below the perianth members. In some other families, the situation is not entirely clear. In *Santalaceae* the calyculus appears to be absent throughout, except that Nickrent et al. (2010) state it to be present in *Mida* and *Nanodea*. This is perhaps an error: at least, there is no published evidence for a calyculus in the latter genus, and the detailed illustration of the latter in Cheeseman (1914) shows nothing of the sort even though Bhatnagar (1960) does mention 5 minute lobes alternating with petals. In the same Nickrent et al. paper, *Myoschilos* (*Santalaceae*) is said to have a calyculus, but this is not documented. Also in *Santalaceae*, the curious foliar structures surrounding the female flower of *Buckleya* may or may not be comparable to a calyculus. In *Erythralium* a calyculus is also absent, but in *Heisteria*, placed by Nickrent et al. (2010) in the same family, we find perhaps the largest calyculus in the order (Kuijt 1969, Sleumer 1984). *Octoknemaceae* flowers have small calyx teeth alternating with valvate petals, and *Olacaceae* flowers have a calyx or calyculus that becomes accrescent, tightly surrounding the fruit (Nickrent et al. 2010). *Schoepfia*, placed in its separate family, also has an inconspicuous calyculus (Kuijt 1969), as do *Opiliaceae*. What emerges from this summary is the fact that there remains a great deal of uncertainty about the distribution

of a reduced calyx or calyculus outside *Loranthaceae*. Whether all such structures are homologous is another question.

Loranthaceous flowers always show a calyculus, with the exceptions of only the male flowers of *Tupeia* (Kuijt 1969) and *Oryctina eubrachiodides* Kuijt (Kuijt 2000). Not surprisingly, it varies in size with the size of the flower. It is exceedingly small but, with the above two exceptions, always recognizable, even in the minutest flowers of the small-flowered neotropical members of the family. The largest calyculus in the family appears to be that of *Aetanthus mutisii* (Kunth) Engl. (Kuijt, in prep.), which is coarsely and irregularly dentate. As mentioned above, vasculated calyculi are reported in four monotypic, basal genera.

### BISERIATE COROLLA CONCEPT

An additional, novel concept advanced by, or at least implied by, Wanntorp & Ronse De Craene (2009) is the idea of a biseriate corolla in *Loranthaceae*, as extrapolated from the perianth of other *Santalales*. It is indeed true that numerous genera, nearly entirely in the New World (Kuijt 2010) demonstrate corolla dimorphism. In those taxa, each corolla consists of shorter and longer members in alternating positions (see for example, Kuijt 2009, 2011b). This dimorphism is often accompanied by an equally striking stamen dimorphism, the extremes being found in *Dendropemon* and two recently described species of *Passovia*, where sterile staminodes alternate with fertile stamens (Kuijt 2011a, b).

The evidence presented for the biseriate corolla concept consists of extrapolation and interpretation of SEM images, and is not altogether convincing. Quite aside from the fact that it is based on only two species, it must be remembered that dimorphism in the corolla and androecium is by no means universal in the *Loranthaceae*; in fact, it appears to be almost entirely restricted to the New World. Even there, there are species and genera that have isomorphic petals and stamens, or nearly so, as in some species of *Psittacanthus* (Kuijt 2009), as well as the genus *Tristerix* (Kuijt 1988b) and the monotypic genus *Pusillanthus* (Kuijt 2008). It is also difficult to appreciate how the biseriate corolla concept can apply to the numerous taxa, in both hemispheres, that have 5- or 7-merous corollas. Additionally, it is also difficult or even impossible to reconcile the concept with the existence of gamopetalous taxa in Africa (Kirkup 1998) or the campanulate flowers of the rare Mexican *Cladocolea biflora* Kuijt (Kuijt 1980). Since petal dimorphism exists in many mature flowers, it should come as no surprise that this fact is expressed even very early in their morphogenetic history.

### CONCLUSIONS

The prophyllar hypothesis for the calyculus must be rejected in *Loranthaceae*, as much of the relevant published literature makes it problematic, as demonstrated above. Wanntorp & Ronse De Craene's (2009) interpretation of their SEM images is incorrect at least in the crucial details of the calyculus. What is labelled 'calyculus' in many images instead represents the young ovary (crowned by the young calyculus), and an ovary can scarcely have been formed by the two associated prophylls. In other families of *Santalales* the concept remains a remote but unlikely possibility, pending on the demonstration of the existence and development of prophylls. It is recommended to adhere at this time to the traditional interpretation of the calyculus as a reduced calyx.

The biseriate corolla concept implied for *Loranthaceae* by the same authors must also be rejected, for separate reasons.

## REFERENCES

- Barlow BA. 1997. Lorantheaceae and Viscaceae. *Flora Malesiana*, Series I, Seed Plants 13: 209–401.
- Bhatnagar SP. 1960. Morphological and embryological studies in the family Santalaceae – IV. *Mida salicifolia* A.Cunn. *Phytomorphology* 10: 198–207.
- Brummitt RK. 2006. Am I a bony fish? *Taxon* 55: 268–269.
- Cheeseman TF. 1914. Illustrations of the New Zealand flora 2: 1–2, pl. 177.
- Eichler AW. 1868. Lorantheaceae. In: Martius CFP (ed), *Flora Brasiliensis* 5, 2: 1–136.
- Endress PK. 2010. Disentangling confusions in inflorescence morphology: patterns and diversity of reproductive shoot ramification in angiosperms. *Journal of Systematics and Evolution* 48: 225–239.
- Engler A, Krause K. 1935. Lorantheaceae. In: Engler A, Krause K (eds), *Die natürlichen Pflanzenfamilien*, 2nd ed, 16b: 98–203. Duncker & Humblot, Berlin.
- Garg S. 1958. Embryology of *Atkinsonia ligustrina* (A.Cunn. ex F.Muell.) F.Muell. *Nature* (London) 182: 1615–1616.
- Hawksworth FG, Wiens D. 1970. New taxa and nomenclatural changes in *Arceuthobium* (Viscaceae). *Brittonia* 22: 265–269.
- Hawksworth FG, Wiens D. 1976. *Arceuthobium oxycedri* and its segregates *A. juniperi-procerae* and *A. azoricum*. *Kew Bulletin* 31: 71–80.
- Hawksworth FG, Wiens D. 1996. Dwarf mistletoes: biology, pathology, and systematics. United States Department of Agriculture, Forest Service, *Agricultural Handbook* 709.
- Kirkup D. 1998. Pollination mechanisms in African Lorantheaceae. In: Polhill R, Wiens D, *Mistletoes of Africa*: 37–60. Royal Botanical Gardens, Kew.
- Kuijt J. 1959. A study of heterophylly and inflorescence structure in *Dendrophthora* and *Phoradendron* (Lorantheaceae). *Acta Botanica Neerlandica* 8: 506–546.
- Kuijt J. 1969. The biology of parasitic flowering plants. University of California Press, Berkeley & Los Angeles.
- Kuijt J. 1970. A systematic study of branching patterns in dwarf mistletoes (*Arceuthobium*). *Memoirs of the Torrey Botanical Club* 22, 4: 1–38.
- Kuijt J. 1975. The genus *Cladocolea* (Lorantheaceae). *Journal of the Arnold Arboretum* 56: 266–335.
- Kuijt J. 1976a. *Maracanthus*, a new genus of Lorantheaceae. *Brittonia* 28: 231–238.
- Kuijt J. 1976b. Revision of the genus *Oryctanthus* (Lorantheaceae). *Botanische Jahrbücher für Systematik* 95: 478–534.
- Kuijt J. 1980. Miscellaneous mistletoe notes, 1–9. *Brittonia* 32: 518–529.
- Kuijt J. 1981a. A rejoinder on *Oryctina* (Lorantheaceae). *Plant Systematics and Evolution* 137: 215–219.
- Kuijt J. 1981b. Inflorescence morphology of Lorantheaceae – an evolutionary synthesis. *Blumea* 27: 1–73.
- Kuijt J. 1988a. Monograph of *Eremolepidaceae*. *Systematic Botany Monographs* 18: 1–60.
- Kuijt J. 1988b. Revision of *Tristerix* (Lorantheaceae). *Systematic Botany Monographs* 19: 1–61.
- Kuijt J. 1991. *Panamanthus*, a new monotypic genus of neotropical Lorantheaceae. *Annals of the Missouri Botanical Garden* 78: 172–176.
- Kuijt J. 2000. Two new Brazilian species of *Oryctina* (Lorantheaceae) with a revised key to the genus. *Novon* 10: 391–397.
- Kuijt J. 2003. Monograph of *Phoradendron* (Viscaceae). *Systematic Botany Monographs* 66: 1–643.
- Kuijt J. 2008. *Pusillanthus* (Lorantheaceae), a new monotypic genus from Venezuela. *Novon* 18: 370–373.
- Kuijt J. 2009. Monograph of *Psittacanthus* (Lorantheaceae). *Systematic Botany Monographs* 86: 1–361.
- Kuijt J. 2010. A note on stamen position and petal number in Lorantheaceae. *Blumea* 55: 224–225.
- Kuijt J. 2011a. Monograph of *Dendropemon* (Lorantheaceae). *Systematic Botany Monographs* 92: 1–110.
- Kuijt J. 2011b. Pulling the skeleton out of the closet: resurrection of *Phthirusa* sensu Martius and consequent revival of *Passovia* (Lorantheaceae). *Plant Diversity and Evolution* 129: 159–211.
- Kuijt J. 2012. Reinstatement and expansion of the genus *Peristethium* (Lorantheaceae). *Annals of the Missouri Botanical Garden* 98: 542–577.
- Lawrence GHM. 1951. *Taxonomy of vascular plants*. MacMillan, New York.
- Mekel JC. 1935. Der Blütenstand und die Blüte von *Korthalsella dacrydii*. *Blumea* 1: 312–319.
- Narayana R. 1958. Morphological and embryological studies in the family Lorantheaceae – III. *Nuytsia floribunda* (Labill.) R.Br. *Phytomorphology* 8: 306–323.
- Nickrent DL, García MA, Martín MP, Mathiasen RL. 2004. A phylogeny of all species of *Arceuthobium* (Viscaceae) using nuclear and chloroplast DNA sequences. *American Journal of Botany* 91: 125–138.
- Nickrent DL, Malécot V, Vidal-Russell R, Der JP. 2010. A revised classification of Santalales. *Taxon* 59: 538–558.
- Nordal I, Stedje B. 2005. Paraphyletic taxa should be accepted. *Taxon* 54: 5–6.
- Pilger R. 1935. Santalaceae. In: Engler A, Prantl K (eds), *Die natürlichen Pflanzenfamilien*, 2nd ed, 16b: 52–91. Duncker & Humblot, Berlin.
- Schaeppi H, Steindl F. 1945. Blütenmorphologische und embryologische Untersuchungen an einigen Viscoiden. *Beiheft der Vierteljahrsschrift der Naturforschenden Gesellschaft Zürich* 90: 1–46.
- Sieumer HO. 1984. Olacaceae. *Flora Neotropica* 38: 1–159.
- Van Tieghem P. 1895. Sur le groupement des espèces en genres dans la tribu des Gaïadendrées de la famille des Loranthacées. *Bulletin du Société Botanique de France* 42: 455–460.
- Venkata Rao C. 1964. On the morphology of the calyculus. *Journal of the Indian Botanical Society* 42: 618–628.
- Wanntorp L, Ronse De Craene LP. 2009. Perianth evolution in the sandalwood order Santalales. *American Journal of Botany* 96: 1361–1371.
- Zander RH. 2011. Structuralism in phylogenetic systematics. *Biological Theory* 5: 383–394.