



# Nine new species of *Thottea* (*Aristolochiaceae*) in Peninsular Malaysia and Singapore, with two taxa in Peninsular Malaysia redefined and a taxon lectotypified

T.L. Yao<sup>1</sup>

## Key words

conservation status  
endemic  
new species  
Peninsular Malaysia  
Singapore  
*Thottea*

**Abstract** Nine new species of the genus *Thottea*, namely *T. anthonyssamyi*, *T. kamarudiniana*, *T. longipedunculata*, *T. papilionis*, *T. piscodora*, *T. reflexa*, *T. ruthiae* and *T. terengganuensis* from Peninsular Malaysia (eight species) and *T. praetermissa* from Peninsular Malaysia and Singapore (one species) are described and illustrated. Distribution maps are provided and conservation status is assessed for the new species. *Thottea dependens* and *T. tricornis* are redefined and *T. parviflora* is lectotypified. *Thottea* is now represented by 16 species in Peninsular Malaysia and two in Singapore. A spherical-ovoid shaped perianth with an aperture at the top is observed for the first time in *Thottea*. The white and bicoloured perianth are described for the first time in Peninsular Malaysian *Thottea*. Eight out of the nine novelties fall in the IUCN 'Threatened' category, and six of them are considered as 'Critically Endangered'.

**Published on** 21 November 2013

## INTRODUCTION

*Thottea* Rottb. (*Aristolochiaceae*) is a small genus with about 35 species distributed in Sri Lanka, India, Bangladesh, Myanmar, Thailand, Vietnam, China (Hainan), Sumatra, Peninsular Malaysia, Singapore, Java, Borneo, the Philippines and Sulawesi. In Malesia, the taxonomic study of *Thottea* reached the highest achievement in the publication of the *Aristolochiaceae* account in Flora Malesiana (Hou 1984), in which 22 species are recognised, 7 of which occur in Peninsular Malaysia, namely *Thottea dependens* (Planch.) Klotzsch, *T. grandiflora* Rottb., *T. parviflora* Ridl., *T. piperiformis* (Griff.) Mabb., *T. sumatrana* (Merr.) Ding Hou, *T. tomentosa* (Blume) Ding Hou and *T. tricornis* Maingay ex Hook.f.; and two in Singapore, namely *T. dependens* and *T. grandiflora*. All four *Thottea* species that are found in Thailand, *T. grandiflora*, *T. parviflora*, *T. sumatrana* and *T. tomentosa* (Phuphathanaphong 1987) also occur in Peninsular Malaysia.

Morphologically similar species are difficult to distinguish during non-reproductive stages. Flowering of some *Thottea* species is intermittently seasonal (Kiew 1984, pers. obs.) and thus flowering specimens are not always available. Inflorescence position, shape, size and colour of perianth, as well as stamen number and arrangement, provide very important characters for species identification (Shaiju & Omanakumari 2009, 2010). Ultrastructural features of the abaxial surface of the lamina also facilitate species identification of non-reproductive specimens (Hou 1981) but these characters are only useful for some taxa. Recent phylogenetic analyses demonstrate the monophyly of *Thottea* (Oelschlägel et al. 2011).

### Discovery of *Thottea* in Peninsular Malaysia and Singapore

The history of *Thottea*-discovery in Peninsular Malaysia mirrors that of taxonomic research in Malay Peninsula (Kiew et al. 2010). All taxa from the Malay Peninsula treated by Hou (1984), except *T. sumatrana*, were discovered and named

before the publication of Ridley's Flora of Malay Peninsula in the 1920s. These species occur mainly in the west coast of Peninsular Malaysia.

After an interval of about 50 years, *Thottea longipedunculata* was collected by a forester A. Motan (KEP) in 1960. Twenty years later, another sterile specimen was collected by S. Kamarudin (UKMB) during a medicinal plant survey in 1981. This species is known to occur in Tanah Merah and Jeli, Kelantan, on the Malaysia-Thailand border.

The discovery of new *Thottea* species sometimes results from entomological studies, due to the use of these plants as food by larvae of swallowtail butterflies (*Papilionidae*) (Hou 1983). S. Anthonyssamy (Universiti Pertanian Malaysia, UPM, now Universiti Putra Malaysia) and J. Weintraub discovered *T. anthonyssamyi* and *T. papilionis* during the 1987 swallowtail butterfly survey (Kiew pers. comm.). In the same decade, botanical collecting activities carried out by Kiew and Anthonyssamy led to the discovery of *T. praetermissa* on the foothills of G. Ledang, Asahan, Malacca and *T. ruthiae* in Kampung La, Besut, Terengganu.

More recently, *T. kamarudiniana* was discovered during the Gunung Mandi Angin Scientific Expedition in 2004 (Faridah-Hanum et al. 2006), which was organised by Forestry Department of Peninsular Malaysia (JPSM). This population was in full bloom when found next to a forest track behind a logging camp (Sani pers. comm.). The plants were photographed and some living plants were collected for planting but no flowering material was preserved. Unfortunately, the living material eventually died. On revisiting the collection site, I collected a few fruiting specimens, and made stem cuttings, but they did not survive.

Since the initiation of the Flora of Peninsular Malaysia project in 2005, field work in botanically less explored areas has led to the discovery of more new species (Kiew & Rafidah 2007). During several botanical collecting trips to Terengganu, I discovered *T. piscodora*, *T. reflexa* and *T. terengganuensis*. Materials of both *T. reflexa* and *T. terengganuensis* in reproductive stages were first discovered in Lata Tembakah Recreational Forest and Lata Sekayu Recreational Forest, respectively. This shows

<sup>1</sup> Forest Research Institute Malaysia, 52109 Kepong, Selangor, Malaysia; e-mail: yaotzeleong@frim.gov.my.

that pristine lowland forests of Peninsular Malaysia still houses species new to science, and recreational forests are playing an important role in biodiversity conservation. *Thottea piscodora* was found in a disturbed forest adjacent to a freshwater swamp in Rasau Kerthel forest complex.

From examination of the specimens cited by Gamble (1912) deposited in Royal Botanic Garden, Kew (K), I found some drawings on the specimen sheet of *Scortechini* 1952. The drawings illustrate the ovoid-spherical perianth and annotate the number of stamens and stigmatic lobes of flowers on both *Scortechini* 1952 and *King's Collector* 705. These specimens had been identified as *T. tricornis* but the drawings reveal that the specimens actually belong to *T. anthonyamyi*.

Botanists based in the Singapore Botanic Gardens (SING) recently collected a few specimens of *Thottea* in reproductive stages from the Western Catchment Area, Singapore. These collections prompted me to carefully re-examine the specimen *Goodenough* 5570 (SING), identified as *T. dependens*, collected in 1893, and which has a detached inflorescence. The recent collections showed that the inflorescences of this species are positioned at the base of the stem. Flowers preserved in spirit also allowed study of perianth shape and details such as stamens number and arrangement. Now, these specimens can be determined as *T. praetermissa*.

Five out of nine novelties presented here produce inflorescences at the stem base. So, I urge plant collectors when encountering a plant of *Thottea* to check the stem base for

reproductive organs. The shape of perianth and the number and arrangement of stamens are important for species identification. Hence, a good collection must be complemented by flowers preserved in spirit.

## NEW TAXA

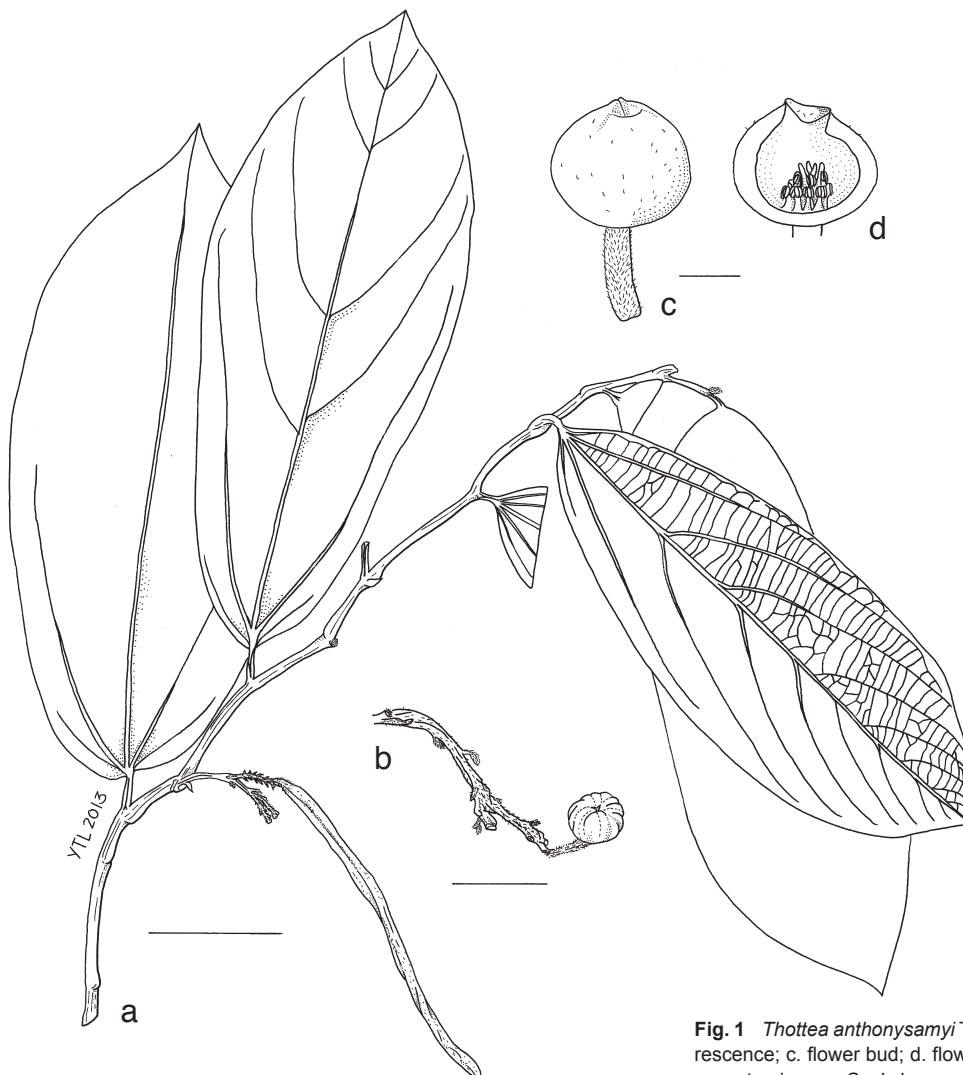
### 1. *Thottea anthonyamyi* T.L.Yao, *sp. nov.* — Fig. 1, 10a; Map 1

This species is most similar to *T. tricornis* in the oblanceolate lamina and axillary position of the inflorescence but differs in its flower with 15–20 stamens (not 23–26) and 4–5 stigmatic lobes (not 8–13). It is distinct from all other *Thottea* species in its ovoid to spherical perianth with perforated apex. — Type: *Anthonyamy* *s.n.* (holo SING 15182; iso SING 15178, 15179, 15183), Peninsular Malaysia, Perak, Tapah, disturbed forest in [a] rubber estate, 13 Oct. 1987 (fl and fr).

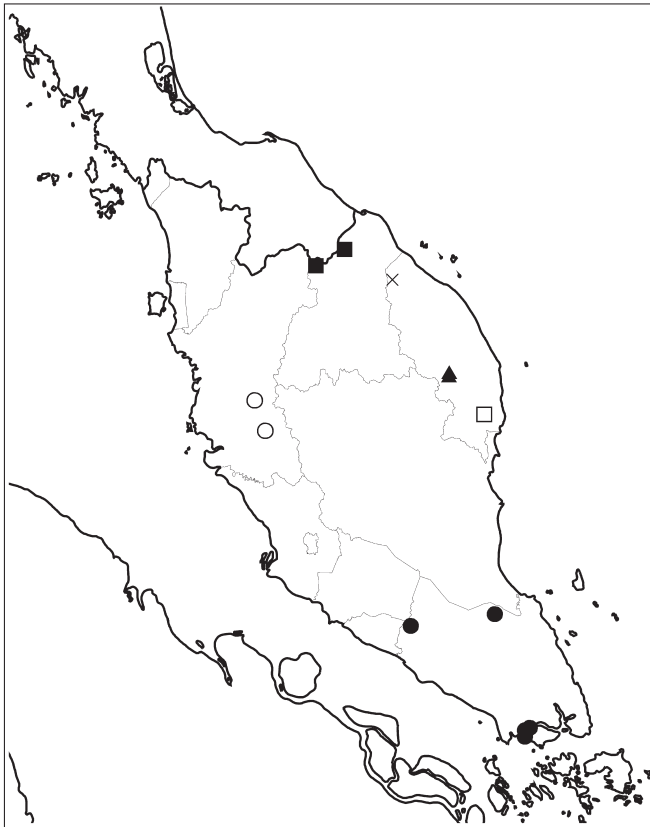
*Thottea tricornis* auct. non Maingay ex Hook.f.: Gamble (1912) 29; Ridley (1924) 16; Ding Hou (1984) 74, p.p.

*Etymology.* Anthonyamy Savarimuthu, born 1943; herbarium assistant and avid plant collector in the Biology Department, University Pertanian Malaysia (now Universiti Putra Malaysia), Serdang, Selangor, Malaysia.

Shrub, 1.5–1.8 m tall, stem slender, erect, scarcely branched, pendent at top. *Stems* dark green, 4–5 mm diam, surface shallowly furrowed, puberulent; nodes swollen. *Leaves:* petiole slender, 7–13 mm long, 2.5–3 mm diam, densely puberulent; lamina pale green beneath, drying brown, lanceolate or oblanceolate, 21–25 by 7.5–10.5 cm, papery to thinly leathery, sparsely pu-



**Fig. 1** *Thottea anthonyamyi* T.L.Yao. a. Habit and a fruiting branch; b. inflorescence; c. flower bud; d. flower bud with perianth partly removed showing gynostemium. — Scale bars: a = 5 cm; b = 1 cm; c, d = 2 mm (a: *Anthonyamy* *s.n.*, SING 15178; b: *Anthonyamy* *s.n.*, SING 15182; c, d: *Anthonyamy* *s.n.*, SING 15179).



**Map 1** Distribution of *Thottea anthonyamyi* (○), *T. kamarudiniana* (▲), *T. longipedunculata* (■), *T. piscodora* (□), *T. praetermissa* (●) and *T. reflexa* (×).

berulent beneath, base cuneate, margin entire, apex blunt or acute; midrib above pronounced, below prominent, venation pinnate with basal pairs, above noticeable, below prominent, basal pairs 2, upper basal pair less than, or sometimes more than half of the lamina length, lateral pairs 5–6; intercostal veins a mix of ladder-like and net-like, ladder-like veinlets more pronounced. *Inflorescences* in axils of foliage leaf, congregated or solitary; peduncle sometimes once branched, 13–24 mm long, c. 2 mm diam, pubescent; bracts lanceolate, c. 3 by 1.5 mm, densely pubescent, apex blunt, venation obscure. *Flowers* erect; pedicel and ovary c. 0.6 cm long, ovary c. 1 mm diam, densely pubescent; perianth creamy white, ovoid to spherical, obscurely 3-lobed, top axis perforate, c. 0.4 cm long, c. 0.7 cm diam, venation faint, outer surface puberulent, glabrescent, inner surface puberulent; stamens 15–20 in 2 whorls, upper whorl with 5–6 stamens, lower whorl 10–14, filamentous; filaments c. 0.5 mm long, glabrous, anthers positioned at the swollen connective apex, oblong, c. 0.5 mm long, c. 0.2 mm wide; style column cylindrical, c. 1 mm long, glabrous; stigmatic lobes 4–5, positioned higher than stamens, c. 1 mm long, glabrous. *Capsules* pendent, ripening brown, twisted, 4-angled, 125–145 mm long, 3–6 mm diam, densely puberulent. *Seeds* ellipsoid,

c. 4 by 2 mm, 3-angled, slightly ridged, margin corrugated, testa surface wrinkled, apex and base acute.

**Distribution** — Endemic to Peninsular Malaysia, known only from Perak.

**Ecology** — Lowland forest.

**Conservation status** — Endangered B2ab(iii). This species has not been collected in the past 20 years. Both known localities have been severely disturbed.

*Additional specimens examined.* PENINSULAR MALAYSIA, Perak, Gopeng [Goping], *King's Collector 705*, Sept. 1880 (K); *Scortechini 1952*, Apr. 1885 (K).

**Notes** — 1. The white spherical-ovoid perianth of this species is unique in *Thottea*. The only opening is an aperture at its top axis, which presumably is the entrance for insect pollinators. The largest flower available for this study might not be a fully developed one.

2. Vegetative characters and the compact inflorescence when young resemble those of *T. tricornis*.

3. For comparison of *T. anthonyamyi* and *T. tricornis* see Table 1.

**2. *Thottea kamarudiniana* T.L.Yao, sp. nov.** — Fig. 2, 10b; Map 1

This species is similar to *T. grandiflora* in its broadly lanceolate lamina and the inflorescence that is positioned at the stem nodes below foliage leaves but well above ground level but it is different in its perianth that has three deeply dissected lobes with a shallow cupular base (not bell-shaped perianth). — Type: *Sani et al. SM 449* (holo UKMB, with a colour photograph of flowers), Peninsular Malaysia, Terengganu, Pasir Raja FR [Kampung Pasir Raja], track to big Chengal [tree], 6 June 2004 (fl).

*Etymology.* Kamarudin Mat Salleh, affectionately known as Pak Din, 1959–2009; a Malaysian botanist and Professor in Universiti Kebangsaan Malaysia, best known for his research on *Rafflesia* (*Rafflesiaceae*). He passed away prematurely.

Shrub, 1.3–2.5 m tall, stem stout, erect, scarcely branched, pendent at top. *Stems* dark green, 8–10 mm diam, surface shallowly furrowed, densely pubescent; nodes indistinct. *Leaves*: bract-like reduced leaves 11–19, foliage leaves c. 7 on one stem; petiole stout, 12–14 mm long, 4–5 mm diam, densely pubescent; lamina dark green above, green beneath, drying brown, broadly lanceolate, 43–44 by 26–27 cm, first foliage lamina distinctly smaller, papery to thinly leathery, indumentum beneath densely pubescent, base rounded or cordate, margin entire, apex acute; midrib above flat, below prominent; venation pinnate with basal pairs, above noticeable, below prominent, basal pairs 2, upper basal pair less than half of the leaf length, lateral pairs 8–12; intercostal veins a mix of ladder-like and net-like, ladder-like veinlets more pronounced. *Inflorescences* on stem below foliage leaves well above ground level, solitary; peduncle sometimes once branched, c. 45 mm long, c. 4 mm diam, densely pubescent; bracts light green, lanceolate, 10–12 by 4–6 mm, pubescent, apex acute, venation distinct. *Flowers* pendent; perianth creamy white on outer surface, venation dis-

**Table 1** Comparison of *Thottea anthonyamyi* and *T. tricornis*.

	<i>T. anthonyamyi</i>	<i>T. tricornis</i>
Lamina: length by width (cm)	lanceolate or oblanceolate: 21–25 by 7.5–10.5	broadly ovate, narrowly oblanceolate or oblanceolate: (16.5–)22–36.5 by 8–16.5
Peduncle length (cm)	1.3–2.4	3–6
Perianth colour	creamy white	magenta on outer surface, creamy white on inner surface
Perianth shape	ovoid to spherical, top axis perforate and obscurely 3-lobed	3-lobed, funnel-shaped, base not distinctly contracted; lobes faintly deltoid, flared
Perianth length by diam (cm)	0.4 by 0.7 (not fully mature)	1.4–1.5 by 1.5–3.5
Stamens	15–20 in 2 whorls; upper whorl 5–6, lower whorl 10–14	23–26 in 2 whorls, upper whorl 9–10, lower whorl 14–16
Stigmatic lobe number	4–5	8–13

**Table 2** Comparison of *Thottea kamarudiniana* and *T. grandiflora*.

	<i>T. kamarudiniana</i>	<i>T. grandiflora</i>
Lateral vein pairs	8–12	(5–)6–8(–10)
Inflorescences	at nodes of stem below foliage leaves well above ground level	at axils of foliage leaf or at nodes of stem below foliage leaves well above ground level
Perianth colour	creamy white on outer surface, veins claret, creamy white on inner surface	dark claret, veins white on outer surface
Perianth shape	3-lobed, lobes deeply dissected almost to the base, base contracted into a shallow cup; lobes broadly ovate, flare	bell-shape, 3-lobed; lobes oblong, rarely deltoid

tinct, claret-coloured, creamy white on inner surface, 3-lobed, lobes deeply dissected almost to the base, base contracted into a shallow cup; perianth lobes broadly ovate, flared, apex acute. *Capsules* pendent, ripening brown, twisted, 4-angled, c. 13 cm long, ferruginous villose. *Seed* unknown.

*Distribution* — Endemic to Peninsular Malaysia, known only from Pasir Raja, Terengganu.

*Ecology* — Lowland forest in a tree-fall gap at 160 m altitude, and from edge of trail behind logging camp and beside a wild boar wallow.

*Conservation status* — Critically Endangered B2ab(iii). This species is only known from its type locality and no population occurs within the network of Totally Protected Area.



**Fig. 2** *Thottea kamarudiniana* T.L.Yao. a. Habit; b. the largest leaf; c. inflorescence. — Scale bars: a, b = cm; c = 1 cm (a: Yao & Azril FRI 65595, KEP; b: Sani et al. SM 449, UKMB; c: adapted from a photograph taken by S. Kamarudin (<http://m.flickr.com/photos/kmatsalleh/2320556359/lightbox/>, last accessed 1 Aug. 2013)).



**Table 3** Comparison of *Thottea longipedunculata* and *T. sumatrana*.

	<i>T. longipedunculata</i>	<i>T. sumatrana</i>
Lamina: length by width (cm)	narrowly ovate or oblong: 24.5–30 by 9.5–10	narrowly ovate or lanceolate: 20–21.5 by 7–9.5
Lateral vein pairs	7–8	4–6(–8)
Peduncle length (cm)	c. 28	7.5–10.5
Bracts arrangement	lax	crowded
Perianth colour	white and red	cream on outer surface, dull crimson on inner surface
Perianth shape	3-lobed; lobes shallowly deltoid	3-lobed, lobes deeply dissected to the base, base not distinctly contracted; lobes oblong, flare
Perianth length by diam (cm)	c. 1.5 by 1.6	c. 3.5 by 3.5
Stamens	20 in 2 whorls; upper whorl 8, lower whorl 12	consistently 6 in 1 whorl
Stigmatic lobe number	c. 6	consistently 3

*Additional specimen examined.* PENINSULAR MALAYSIA, Terengganu, Pasir Raja FR, Compartment 5, Yao & Azril FRI 65995 (K, KEP 192700, 192701, 192702, L), 28 June 2011 (fr).

**Notes** — 1. The type is a two sheets accession with a colour photograph of inflorescence with flowers in full bloom, collected during Gunung Mandi Angin Expedition organised by Forestry Department of Peninsular Malaysia. The shape of perianth is described from the image but details such as stamen count are not known. The perianth shape of this species resembles *T. straatmanii* Ding Hou in Sumatra. The distribution of these two species is disjunct though.

2. For comparison of *T. kamarudiniana* and *T. grandiflora* see Table 2.

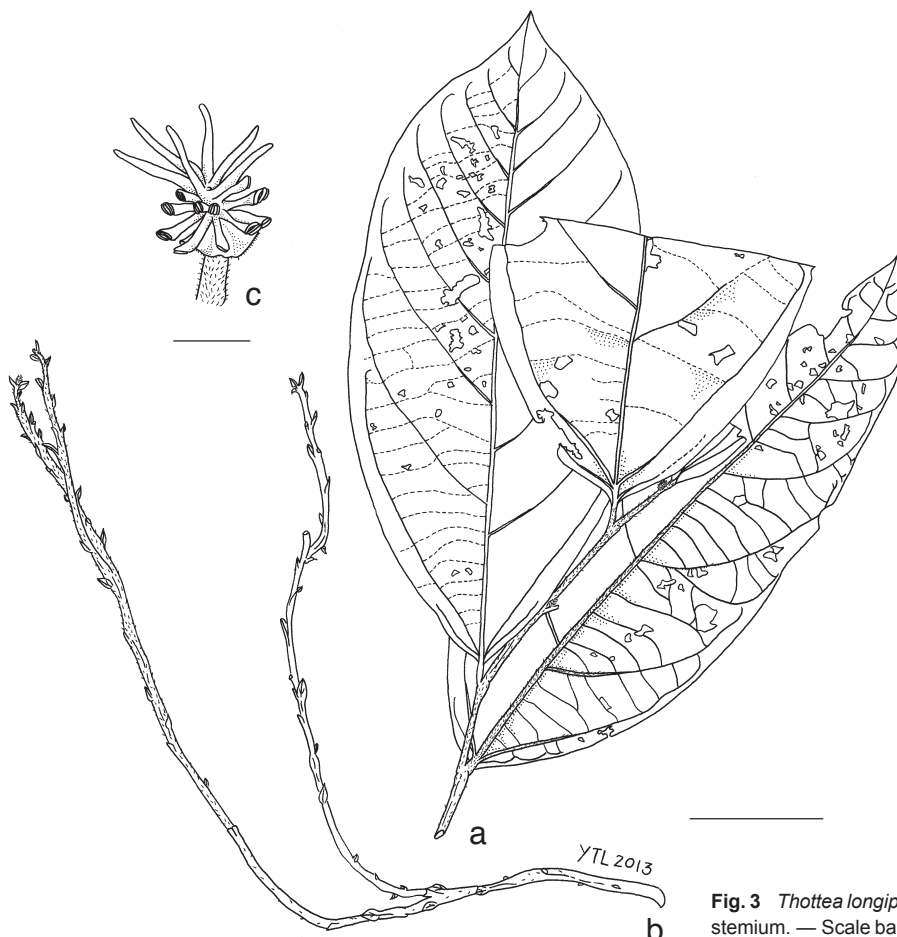
**3. *Thottea longipedunculata* T.L.Yao, sp. nov.** — Fig. 3, 10c; Map 1

This species is similar to *T. sumatrana* in its narrowly ovate lamina with a rounded base but is different in the exceptionally long peduncle c. 28 cm (not to 10.5 cm), the perianth with shallowly deltoid lobes (not oblong ones) and

20 stamens in two whorls (not consistently 6 in one whorl). — Type: *Motan* KEP 94538 (holo KEP 78121), Peninsular Malaysia, Kelantan, Tanah Merah, Kemahang FR, Compartment 65, 13 July 1960 (fl).

*Etymology.* Latin, *longus* = long, *pedunculus* = peduncle; referring to the exceptionally long inflorescence.

Shrub, c. 1.8 m tall, stem slender, erect, scarcely branched, pendent at top. *Stems* dark green, c. 7.5 mm diam, surface smooth, pubescent; nodes indistinct, above nodes constricted. *Leaves:* petiole rather stout, 8–10 mm long, 2–4 mm diam, pubescent; lamina drying brown, narrowly ovate or oblong, 24.5–30 by 9.5–10 cm, papery, indumentum beneath pubescent, base cuneate or rounded, margin entire, apex acute or shortly mucronate; midrib above flat or sometimes sunken, prominent beneath; venation pinnate with basal pairs, above slightly sunken, below prominent, basal pairs 2, upper basal pair less than half of the leaf length, lateral pairs 7–8; intercostal veins a mix of ladder-like and net-like, ladder-like veinlets more pronounced. *Inflorescence* position unknown, solitary; peduncle once branched, c. 280 mm long, c. 3 mm diam, pubescent; bracts



**Fig. 3** *Thottea longipedunculata* T.L.Yao. a. Habit; b. inflorescence; c. gyno-stemium. — Scale bars: a, b = 5 cm; c = 2 mm (all: *Motan* KEP 94538, KEP).

ovate, c. 11 by 5 mm, pubescent, apex blunt or acute, venation obscure or sometimes distinct. *Flowers*: ovary densely pubescent; perianth white and red, 3-lobed, c. 1.5 cm long, c. 1.6 cm diam, outer surface pubescent, inner surface sparsely pubescent; perianth lobes shallowly deltoid, c. 5 by 10 mm, apex blunt; stamens c. 20 in 2 whorls, upper whorl with c. 8 stamens, lower whorl c. 12, filamentous; filament c. 1 mm long, glabrous; anthers positioned at the swollen connective apex, oblong, c. 0.5 mm long, c. 0.2 mm wide; style column cylindrical, c. 1.5 mm long, glabrous; stigmatic lobes c. 6, positioned higher than stamens, c. 2.5 mm long, glabrous. *Capsule* and *seed* unknown.

Vernacular name — Hempedu beruang (Malay).

Distribution — Endemic to Peninsular Malaysia. It is known only from Tanah Merah, Kelantan.

Ecology — Forest undergrowth.

Conservation status — Critically Endangered B1ab(iii). This species has not been collected in the past 30 years. Both known localities have been severely disturbed.

*Additional specimen examined*. PENINSULAR MALAYSIA, Kelantan, Tanah Merah, Batu Melintang, Belimbing, Batu Tekok, Kamarudin KMS 139 (UKMB 11516), 4 July 1981.

Note — For comparison of *T. longipedunculata* and *T. sumatrana* see Table 3.

#### 4. *Thottea papilionis* T.L.Yao, sp. nov. — Fig. 4, 10d; Map 2

This species is similar to *T. rhizantha* in the inflorescence positioned at the stem base, in its claret-violet and white-cream perianth, 3-lobed perianth with a constricted base and 20–24 stamens arranged in two whorls, but this species differs in its smaller leaves 15.5–17.5 by 4–5 cm (not 21–42.5 by 9.5–16.5 cm) and shorter bowl-shaped perianth base 5–7 mm long (not c. 15 mm). This species is also similar to *T. dependens* in its oblanceolate lamina with a mucronate apex, 3-lobed perianth with bowl-shape base and stamens arranged in two whorls but it is different in its green lamina under surface (not glaucous), distinct intercostal veins (not faint), inflorescence position at base of stem close to ground level (not at stem axils well above ground level) and claret perianth with a creamy white patch on each perianth lobe (not plain magenta). — Type: Yao *et al.* FRI 65421 (holo KEP 192442; iso K, L), Peninsular Malaysia, Perak, Tapah, orchard on Sungai Batang Padang north bank, 31 Mar. 2009 (fl).

*Etymology*. Latin, *papilio* = butterfly; of butterfly, it is a food plant for butterfly pupae.

Shrub, stem slender, erect, scarcely branched, pendent at top; c. 1 m tall. *Stems* dark green, c. 6.5 mm diam, surface smooth, puberulent; nodes pronounced, above nodes constricted. *Leaves*: foliage leaves 12–19 on one stem; petiole slender, 7–8 mm long, 1.5–2 mm diam, densely puberulent; lamina green above, pale green beneath, drying brown, oblanceolate, 16–18 by 3.5–5 cm, first foliage lamina distinctly smaller, nar-



Fig. 4 *Thottea papilionis* T.L.Yao. a. Habit; b. first foliage leaf; c. inflorescence; d. flower bud, top view; e. gynostemium. — Scale bars: a, b = 5 cm; c = 2 cm; d = 5 mm; e = 2 mm (all: Yao *et al.* FRI 65421, KEP).

**Table 4** Comparison of *Thottea papilionis*, *T. dependens* and *T. rhizantha*.

	<i>T. papilionis</i>	<i>T. dependens</i>	<i>T. rhizantha</i> *
Lamina: length by width (cm)	ob lanceolate: 16–18 by 3.5–5	ovate, obovate, oblong or oblanceolate: (17–)19.5–28.5(–31) by (5.5–)8.5–13(–16)	elliptic, oblanceolate or oblong: 21–42.5 by 9.5–16.5
Lamina base	cuneate	cuneate or rounded	cuneate or obtuse
Lamina apex	mucronate, sometimes acute	acute or acuminate, sometimes mucronate	acuminate
Inflorescences	at base of stem	at nodes of stem below foliage leaves well above ground level	at base of stem
Peduncle length (cm)	7.5–9	2.8–4.5(–6)	c. 13
Perianth colour	claret with a creamy white patch on each perianth lobe	dark magenta	outer surface faintly violet tinged, inner surface violet at the base, white at the top or red and white
Perianth shape	3-lobed, base contracted into a bowl-shaped cup 5–7 mm long; lobes broadly ovate, flared	3-lobed, base contracted into a bowl-shaped cup; lobes broadly ovate, flared	funnel-shape, base cylindrical tubular, c. 15 mm long; lobes broadly ovate, spreading
Perianth length by diam (cm)	1.3–1.6 by 1.3–2	(0.8–)1.5–2 by (1–)2	3–3.5 by 3.5
Stamens	20–24 in 2 whorls; upper whorl 7–9, lower whorl 13–15	(21–)28–30 in 2 whorls; upper whorl (8–)11–12, lower whorl (13–)17–18	19–23 in 2 whorls; upper whorl 6–8, lower whorl 13–15
Stigmatic lobe number	4–6	5–8	5–7

\* Attributes of the characters were based on species description and illustrations of *Plantae Beccarianae* 3793 (Beccari 1870), and species description in Flora Malesiana (Hou 1984).

rowly lanceolate, c. 11.3 by 2 cm, papery, indumentum beneath sparsely puberulent, base cuneate, margin entire, apex acute or mucronate; midrib above flat, below prominent; venation pinnate with basal pairs, above faint, below noticeable, basal pairs 2, upper basal pair less than half of the leaf length, lateral pairs 5–7; intercostal veins a mix of ladder-like and net-like, ladder-like veinlets more pronounced. *Inflorescences* at stem base close to ground level, congregated; peduncle not branched, 75–90 mm long, c. 1 mm diam, densely puberulent; bracts narrowly ovate, 6–7 by 2–3 mm, pubescent, apex acute, venation distinct. *Flowers* erect; pedicel and ovary 1–1.2 cm long, ovary c. 1 mm diam, densely pubescent; perianth claret-coloured with a creamy white patch on each perianth lobe, 3-lobed, 1.3–1.6 cm long, 1.3–2 cm diam, venation distinct, outer surface sparsely pubescent, inner surface puberulent; base contracted

into a bowl-shaped cup, 0.5–0.7 cm deep, c. 0.7 cm diam, inner surface pubescent; perianth lobes broadly ovate, flared, 8–10 by c. 13 mm, apex blunt or acute; stigmatic lobes positioned higher than stamens; stamens 20–24 in 2 whorls, upper whorl with 7–9 stamens, lower whorl 13–15, filamentous; filament c. 1 mm long, glabrous; anthers positioned at swollen connective apex, oblong, c. 1.2 mm long, c. 0.6 mm wide; style column disc-shaped, c. 2.6 mm long, glabrous; stigmatic lobes 4–6, c. 1.8 mm long, glabrous. *Capsule* and *seed* unknown.

*Distribution* — Endemic to Peninsular Malaysia, known only from Tapah, Perak.

*Ecology* — Lowland forest. Planted, natural habitat unknown, collected from a mix fruit orchard.

*Conservation status* — Critically Endangered B2ab(iii). This species is only known from the type specimen and no population occurs within the network of Totally Protected Area.

*Notes* — 1. Known only from the type and a photograph, which was published (Polunin 2004) as an unnamed *Thottea* sp.

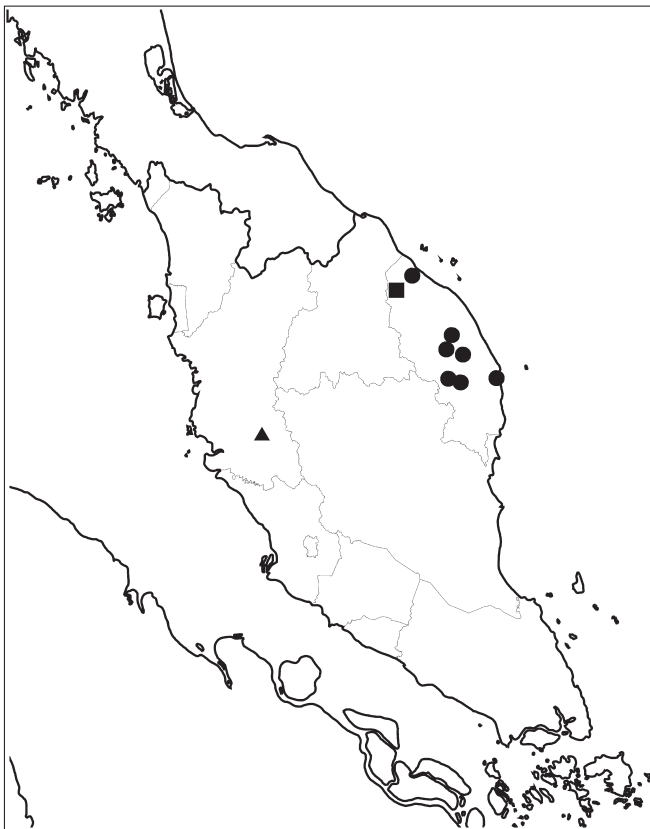
2. For comparison of *T. papilionis*, *T. dependens* and *T. rhizantha* see Table 4.

##### 5. *Thottea piscodora* T.L.Yao, *sp. nov.* — Fig. 5, 10e; Map 1

This species is similar to *T. dependens* in its glaucous lamina under surface, faint intercostal veins, inflorescence produced below foliage leaves but well above ground level and stamens arrange in two whorls but it is different in its urn-shape perianth base (not bowl-shape), fewer stamens 14–15 (not 21–30) and creamy white perianth (not plain magenta). — Type: Yao *et al.* FRI 65443 (holo KEP 192446; iso K, L, SING), Peninsular Malaysia, Terengganu, Kemaman, Rasau Kerteh FR, 8 Apr. 2009 (fl).

*Etymology*. Latin, *piscis* = fish, *odor* = smell; denoting the flower with a rotten fish smell.

Shrub, c. 2 m tall, stem stout, erect, scarcely branched, pendent at top. *Stems* dark green, 4–6 mm diam; nodes pronounced. *Leaves*: petiole rather stout, c. 7 mm long, c. 4.5 mm diam; lamina dark green above, distinctly glaucous beneath, narrowly lanceolate, 25–28.5 by 7.5–9.5 cm, first foliage lamina distinctly smaller, narrowly ovate, 11–15.5 by 1–2.5 cm, thinly leathery, glabrous beneath, base cuneate, margin entire, apex acute; midrib above flat or slightly raised, below prominent; venation pinnate with basal pairs, noticeable above and below, basal pairs 2, upper basal pair less than half of the leaf length, lateral pairs 5–8; intercostal veins a mix of ladder-like and net-like, ladder-like veinlets more pronounced, net-like veinlets obscure. *Inflorescences* on stem below foliage leaves well above ground level, congregated, a few inflorescences produced from node thicken due to repeating flowering; peduncle sometimes once



**Map 2** Distribution of *Thottea papilionis* (▲), *T. ruthiae* (■) and *T. terengganuensis* (●).

branched, 0.4–0.8 mm long, c. 1.6 mm diam, glabrescent; bracts oblanceolate or ovate, c. 2 by 1 mm, glabrescent, apex acute or sometimes notched or bifid, venation obscure. *Flowers*: ovary ascending, perianth horizontally held; pedicel and ovary c. 2 cm long, ovary c. 1.5 mm diam, pubescent; perianth creamy white, towards centre tinged pale greenish grey, 3-lobed, c. 1.2 cm long, c. 0.9 cm diam, venation distinct, outer surface puberulent, inner surface sparsely puberulent; base contracted into an urn-shaped cup, c. 0.5 cm deep, c. 0.7 cm diam, inner surface pubescent; perianth lobes broadly ovate, flared, c. 7 by 5 mm, apex acute; stamens 14–15 in 2 whorls, upper whorl with 5–6 stamens, lower whorl c. 9, filamentous; filament c. 1 mm long, puberulent; anthers positioned at the swollen connective apex, oblong, c. 1.2 mm long, c. 0.4 mm wide; style column cylindrical, 2 mm long, glabrous; stigmatic lobes 4–5, positioned higher than stamens, c. 1.5 mm long, glabrous. *Capsule and seed* unknown.

*Distribution* — Endemic to Peninsular Malaysia, known only from Rasau Kerteh, Terengganu.

*Ecology* — Lowland forest, forest fringe close to swamp. Flies are attracted to the flowers that smell of rotten fish.

*Conservation status* — Critically Endangered B2ab(iii). The forest of the single known locality has been severely disturbed.

*Note* — For comparison of *T. piscodora* and *T. dependens* see Table 5.

## 6. *Thottea praetermissa* T.L.Yao, *sp. nov.* — Fig. 6, 10f; Map 1

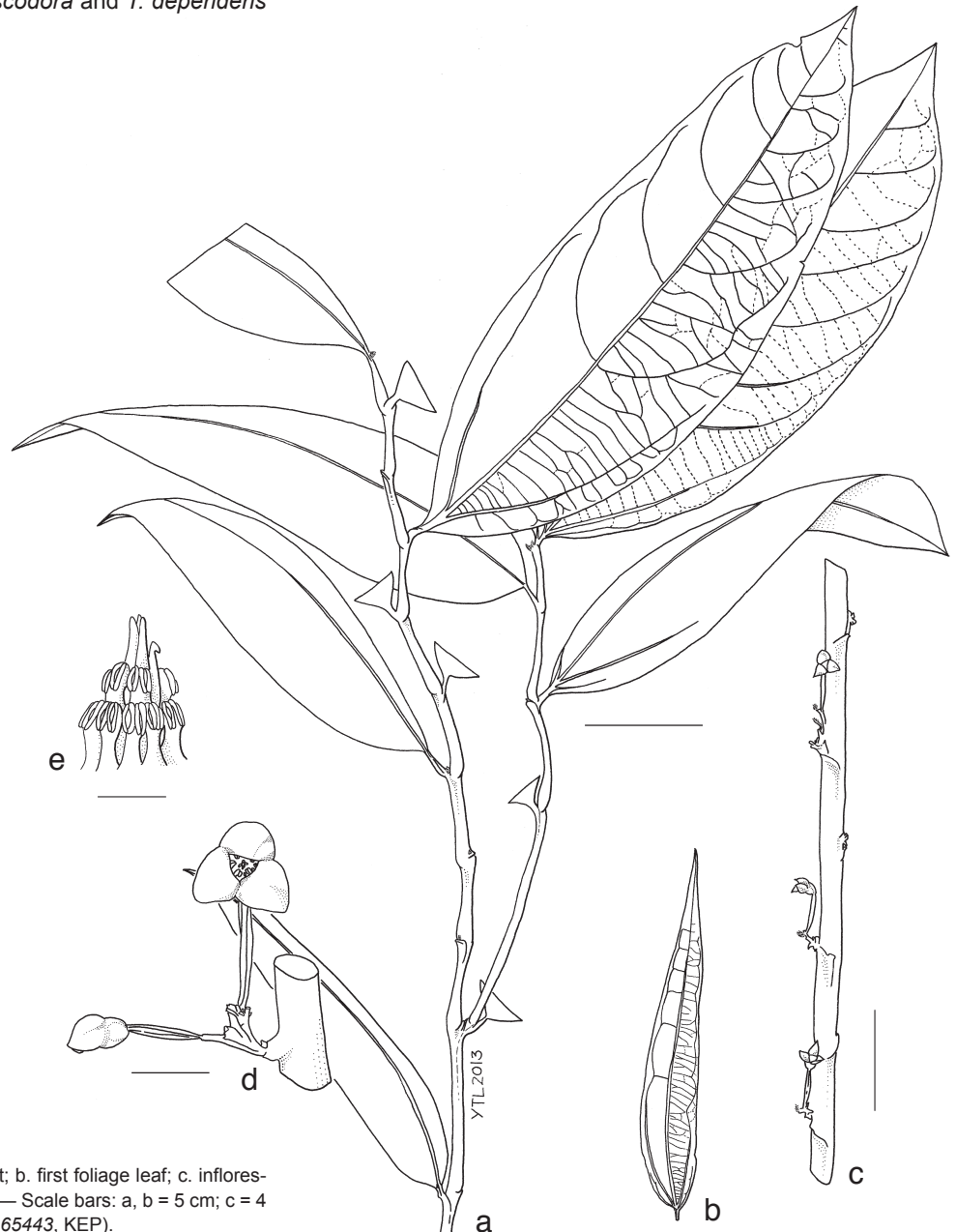
This species is closely allied to *T. beccarii* in inflorescence position at stem base, continuum of stamen number range from 24–30 (*T. beccarii* 20–24) arranged in two whorls, continuum of stigmatic lobe number from 11–13 (c. 10) but this species differs in its inflorescence with laxly arranged bracts (not crowded) and saucer-shape perianth (not cupular). This species is also similar to *T. dependens* in its oblong lamina with cuneate base, acute and sometimes shortly mucronate apex and 24–30 stamens arranged in two whorls but it is different in the green lamina lower surface (never glaucous), distinct intercostal veins (not faint), inflorescences positioned at stem base close to, or with a few well above ground level (not always well above ground level) and the saucer-shaped perianth (not with bowl-shaped cupular base). — Type: *Anthonyssamy* SA 917 (holo KEP 192448; iso SING 15180), Peninsular Malaysia, Malacca, Asahan, 24 Aug. 1987 (fl and fr).

*Thottea dependens* auct. non (Planch.) Klotzsch: Ridley (1900) 127; Gamble (1912) 28; Ridley (1924) 16; Ding Hou (1984) 75, p.p.

*Thottea tricornis* auct. non Maingay ex Hook.f.: Ding Hou (1984) 74, p.p.

*Etymology*. Latin, *praetermissus* = overlooked; referring to this overlooked species. First collected in 1893 but only recognised here as a distinct species.

Shrub, 0.5–1.3 m tall, stem slender, erect, scarcely branched, pendent at top. *Stems* dark green, 4–5 mm diam, surface smooth, densely puberulent; nodes pronounced. *Leaves*: bract-like reduced leaves 4–5, foliage leaves (4–)7–9 on one stem; petiole



**Fig. 5** *Thottea piscodora* T.L.Yao. a. Habit; b. first foliage leaf; c. inflorescences; d. inflorescence; e. gynostemium. — Scale bars: a, b = 5 cm; c = 4 cm, d = 1 cm; e = 2 mm (all: Yao *et al.* FRI 65443, KEP).



**Table 5** Comparison of *Thottea piscodora* and *T. dependens*.

	<i>T. piscodora</i>	<i>T. dependens</i>
Lamina:	narrowly lanceolate:	ovate, obovate, oblong or oblanceolate:
length by width (cm)	25–28.5 by 7.5–9.5	(17–)19.5–28.5(–31) by (5.5–)8.5–13(–16)
Lamina lower surface colour	distinctly glaucous	pale green, sometimes glaucous
Perianth colour	creamy white, towards central tinged pale greenish grey	dark magenta
Perianth shape	3-lobed, base contracted into an urn-shaped cup; lobes broadly ovate, flare	3-lobed, base contracted into a bowl-shaped cup; lobes broadly ovate, flare
Perianth length by diam (cm)	1.2 by 0.9	(0.8–)1.5–2 by (1–)2
Stamens	14–15 in 2 whorls; upper whorl 5–6, lower whorl 9	(21–)28–30 in 2 whorls; upper whorl (8–)11–12, lower whorl (13–)17–18

slender, 5–10 mm long, 1–3 mm diam, puberulent; lamina green above, pale green beneath, drying brown, oblong or lanceolate, 15–22 by 5–7.5 cm, first foliage lamina sometimes distinctly smaller, narrowly lanceolate, c. 11 by 2 cm; thinly leathery, indumentum beneath sparsely puberulent, base cuneate, margin entire, apex acute or shortly mucronate; midrib above flat or sometimes sunken, below prominent; venation pinnate with basal pairs, noticeable above and below, basal pairs 2, upper basal pair less than, or sometimes more than half of the lamina length, lateral pairs 5–6; intercostal veins a mix of ladder-like and net-like, ladder-like veinlets more pronounced. *Inflorescences* at base of stem close to, or with a few well above ground level, solitary; peduncle not branched, 40–80 mm long, 1–1.5 mm diam, densely pubescent; bracts narrowly ovate, c. 4 by 2 mm, densely pubescent, apex blunt or acute, venation obscure. *Flowers* erect; pedicel and ovary c. 2.2 cm long, ovary c. 1.8 mm diam, densely pubescent; perianth dull magenta on outer surface, paler on inner surface, 3-lobed, c. 0.7 cm long, c. 2.5 cm diam, venation distinct, outer surface sparsely

pubescent, inner surface sparsely puberulent; base contracted into a shallow cup, c. 0.5 cm deep, c. 0.8 cm diam, inner surface pubescent; perianth lobes deltoid, spreading to reflexed, c. 10 by 17.5 mm, apex blunt or acute; stamens 24–30 in 2 whorls, upper whorl with 9–14 stamens, lower whorl 15–16, filamentous; filament c. 1.5 mm long, glabrous; anthers positioned at the swollen connective apex, oblong, c. 1 mm long,



**Fig. 6** *Thottea praetermissa* T.L. Yao. a. Habit; b. inflorescences; c. flower bud side view; d. flower side view; e. gynostemium. — Scale bars: a, b = 5 cm; c, d = 1 cm; e = 2 mm (a, b: *Anthonyssamy* SA 917, KEP; c–e: *Gwee et al.* SING-MS 20, KEP).

c. 0.3 mm wide; style column disc-shaped, c. 2.3 mm long, glabrous; stigmatic lobes 11–13, some lobes bifurcate, positioned higher than stamens, c. 2.6 mm long, glabrous. *Capsules* pendent, ripening brown, c. 150 mm long, twisted, 4-angled, c. 4 mm diam, densely puberulent. *Seeds* ovoid, 2.3–2.6 by 4–4.3 mm, 3-angled, slightly ridged, margin corrugated, testa surface pimply, apex acute, base acute or rounded.

**Distribution** — Peninsular Malaysia and Singapore. In Peninsular Malaysia known from Malacca and Johor. In Singapore from Western Catchment Area (extant), Sungai Morai and Sungai Buloh (historic).

**Ecology** — Lowland forest undergrowth, heavily shaded. On damp soil of forest close to freshwater swamp.

**Conservation status** (in Malaysia) — Rare. This species occurs in two sites within the network of Totally Protected Area (Chua 2012).

**Additional specimens examined.** PENINSULAR MALAYSIA, Johor, Gunung Ledang [Mt Ophir], Bukit Besar, *Ridley s.n.* (SING 97446), Dec. 1898; Mersing, Endau-Rompin State Park, Sungai Kemamuk, *Yao, Pannell, Imin, Mohd Nazri FRI65617* (KEP 213072), 22 Nov. 2011; Mersing, Endau-Rompin State Park, Upeh Guling, *Imin, Mohd Nazri, Kamarul Hisham FRI77804* (KEP 213073), 8 July 2012. — SINGAPORE, Sungai Morai, *Goodenough 5570* (SING 3872), 28 Mar. 1893 (fl); Western Catchment, Pergam Marshes, Area D, *Lee SING 2007-343* (SING 106386), 24 July 2007; Western Catchment, Pergam Marshes, Area D, *Leong et al. SING 2007-367* (SING 93668; KEP 140012), 24 July 2007 (fl); Western Catchment, Pergam Marshes (near old Sungai Murai), *Gwee et al. SING-MS 20 (SING 2010-831, ex-population of SING 2007-367)*, 22 Sept. 2010 (fl).

**Notes** — 1. The record of *T. dependens* from Singapore as cited in Flora of British India (Hooker 1886: 74) and followed by subsequent authors was based on two specimens, viz. *Wallich 6648B* (K) and *Lobb 289* (K). Examination of *Wallich 6648B* revealed that it was actually collected from Penang. The locality of Lobb's specimens is dubious (Van Steenis-Kruseman 1950: 325). Ridley (1922) pointed out that some of Lobb's specimens "...labelled 'Singapore' were undoubtedly obtained in the Himalayas, but most are Penang plants". *Lobb 289* was probably also collected from Penang where *T. dependens* was common. Ridley's (1900) record of *T. dependens* from Sungai Buloh, Singapore, is probably based on his observation of *T. praetermissa* populations. No specimen from Sungai Buloh has been located. The first specimen of *T. praetermissa* was collected by Goodenough (*Goodenough 5570*) and was included in *T. dependens* by Ridley (1924) and subsequent authors. To conclude, *T. dependens* does not occur in Singapore.

2. For comparison of *T. praetermissa*, *T. beccarii* and *T. dependens* see Table 6.

## 7. *Thottea reflexa* T.L.Yao, sp. nov. — Fig. 7, 10g; Map 1

This species is similar to *T. grandiflora* in its ovate or broadly lanceolate lamina with a rounded base but it is different in its puberulent lower lamina surface (not densely pubescent as in *T. grandiflora*), inflorescence positioned at stem base close to ground level (not on stem well above ground level), 3-lobed perianth with bowl-shaped cupular base and completely reflexed lobes (not bell-shaped) and stamens 9–10 in one whorl (not 28–42 in two whorls). — Type: *Yao et al. FRI 65597* (holo KEP 192444; iso K, L), Peninsular Malaysia, Terengganu, Lata Tembakah Recreational Forest, 29 June 2011 (fl and fr).

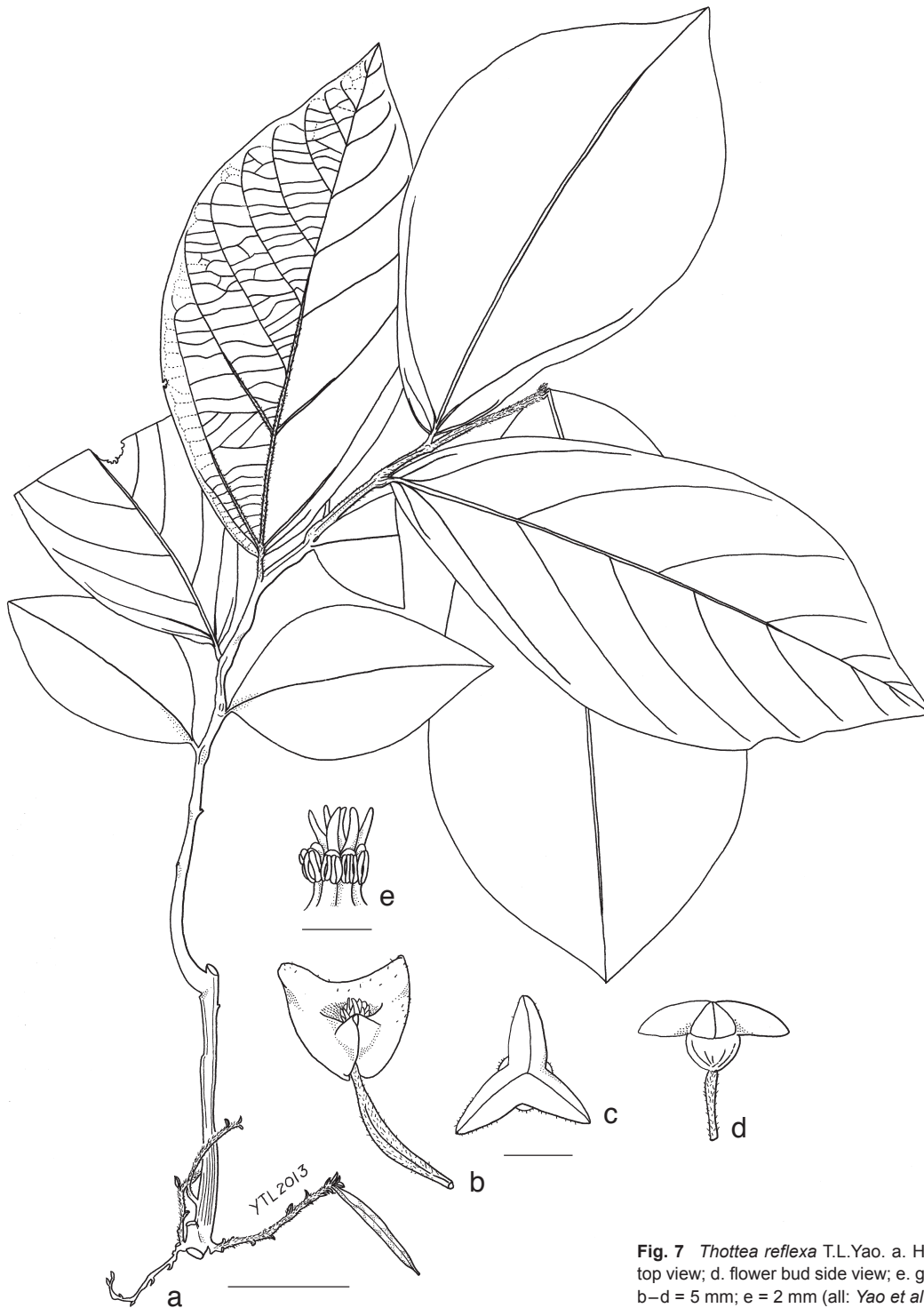
**Etymology.** Latin, *reflexus* = bend backwards at more than 90°; referring to the perianth lobes.

Shrub, c. 0.4 m tall, stem slender, erect, scarcely branched, pendent at top. *Stems* dark green, c. 6 mm diam, surface shallowly furrowed, sometimes smooth, sparsely pubescent; nodes pronounced. *Leaves*: bract-like reduced leaves 4–8, foliage leaves 5–8 on one stem; petiole slender, sometimes rather stout, 8–9 mm long, c. 2 mm diam, pubescent; lamina green above, pale green beneath, drying brown, ovate or obovate or broadly lanceolate, 23.5–24.5 by 11–11.5 cm, first foliage lamina sometimes distinctly smaller, narrowly ovate, 17 by 6 cm, leathery, indumentum beneath pubescent, base cuneate or rounded, margin entire, apex acute; midrib above flat or sometimes sunken, below prominent; venation pinnate with basal pairs, above noticeable, below prominent, basal pairs 2, upper basal pair less than half of the leaf length, lateral pairs 6–7; intercostal veins a mix of ladder-like and net-like, ladder-like veinlets more pronounced. *Inflorescences* at base of stem close to ground level, solitary or rarely clustered; peduncle sometimes once branched, 60–120 mm long, c. 1 mm diam, densely pubescent; bracts green, ovate, c. 4 by 2 mm, densely pubescent, apex blunt or acute, venation obscure. *Flowers* pendent; pedicel and ovary c. 1.4 cm long, ovary c. 1.3 mm diam, pubescent; perianth creamy white, 3-lobed, c. 0.8 cm long, c. 1 cm diam, venation obscure, outer surface pubescent, inner surface puberulent; base contracted into a bowl-shaped cup, c. 0.5 cm deep, c. 0.4 cm diam, inner surface pubescent; perianth lobes broadly ovate, completely reflexed and blanketing perianth base, c. 6 by 9 mm, apex retuse; stamens 9–10 in 1 whorl, filamentous; filament c. 0.5 mm long, glabrous; anthers positioned at the swollen connective apex, oblong, c. 1 mm long, c. 0.3 mm wide; style column cylindrical, c. 1 mm long, glabrous; stigmatic lobes 5–7, positioned higher than stamens, c. 1.2 mm long, glabrous. *Capsules* pendent, ripening dark purple, straight, 4-angled, c. 55 mm long, c. 4 mm diam, sparsely puberulent. *Seeds* ovoid, 3-angled, slightly ridged, margin corrugated, testa surface pimply, 3–3.6 by 2.2–2.4 mm, apex truncate, base rounded.

**Table 6** Comparison of *Thottea praetermissa*, *T. beccarii* and *T. dependens*.

	<i>T. praetermissa</i>	<i>T. beccarii</i> *	<i>T. dependens</i>
Lamina: length by width (cm)	oblong or lanceolate: 15–22 by 5–7.5	elliptic, rarely lanceolate or oblanceolate: 20–35 by 7.5–15	ovate, obovate, oblong or oblanceolate: (17–)19.5–28.5(–31) by (5.5–)8.5–13(–16)
Lamina base	cuneate	cuneate or rounded	cuneate or rounded
Lamina apex	acute, sometimes shortly mucronate	short acuminate	acute or acuminate, sometimes mucronate
Lateral vein pairs	5–6	6–9	6–8(–10)
Inflorescences	at base of stem close to ground level	at base of stem	at nodes of stem below foliage leaves well above ground level
Perianth shape	saucer-shaped, 3-lobed; lobes deltoid, spreading to reflexed	obscurely 3-lobed, base constricted into a tube c. 10 mm long, lobes curved	3-lobed, base contracted into a bowl-shaped cup; lobes broadly ovate, flared
Perianth length by diam (cm)	c. 0.7 by 2.5	1.2–1.8 by 2–2.5	(0.8–)1.5–2 by (1–)2
Stamens	24–30 in 2 whorls; upper whorl 9–14, lower whorl 15–16	20–24 in 2 whorls; upper whorl 7–10, lower whorl 13 or 14	(21–)28–30 in 2 whorls; upper whorl (8–)11–12, lower whorl (13–)17–18
Stigmatic lobe number	11–13	c. 10	5–8

\* Attributes of the characters were based on image of *Beccari 528*, Sumatra, Padang, Ayer Mancior, c. 360 m above sea level, August 1878 (iso K 634523, K 634524 (<http://apps.kew.org/hercat/getImage.do?imageBarcode=K000634523> & <http://apps.kew.org/hercat/getImage.do?imageBarcode=K000634524>, respectively, last accessed 29 July 2013)), and species description in Flora Malesiana (Hou 1984).



**Fig. 7** *Thottea reflexa* T.L.Yao. a. Habit and fruit; b. flower; c. flower bud top view; d. flower bud side view; e. gynostemium. — Scale bars: a = 5 cm; b–d = 5 mm; e = 2 mm (all: Yao *et al.* FRI 65597, KEP).

**Table 7** Comparison of *Thottea reflexa* and *T. grandiflora*.

	<i>T. reflexa</i>	<i>T. grandiflora</i>
Lamina: length by width (cm)	ovate, obovate or broadly lanceolate: 23.5–24.5 by 11–11.5	ovate, oblong, broadly lanceolate or oblanceolate: (16–)21.5–26(–43.5) by (6.5–)10.5–24(–26.5)
Lamina under surface indumentum	puberulent	densely pubescent
Lamina base	cuneate or rounded	cordate, sometimes rounded, rarely truncate
Inflorescences	at base of stem close to ground level	in axils of foliage leaf or at nodes of stem below foliage leaves well above ground level
Perianth colour	creamy white	dark claret-coloured, outside veins white
Perianth shape	3-lobed, base contracted into a bowl-shaped cup; lobes broadly ovate, completely reflexed and blanketing perianth base	bell-shaped, 3-lobed; lobes oblong, rarely deltoid
Perianth length by diam (cm)	c. 0.8 by 1	(3–)6–14 by 6–10
Stamens	9–10 in 1 whorl	28–42 in 2 whorls; upper whorl 12–18, lower whorl 16–24
Stigmatic lobe number	5–7	10–15
Capsule indumentum	sparsely puberulent	villose

Distribution — Endemic to Peninsular Malaysia, known only from Lata Tembakah, Terengganu.

Ecology — Lowland forest undergrowth, on slopes or flat land, persisting in forest gaps. While collecting the type, I observed that only plants in forest gaps flower profusely.

Conservation status — Critically Endangered B2ab(iii). This species is only known from the type specimen and the type locality does not occur within the network of Totally Protected Area.

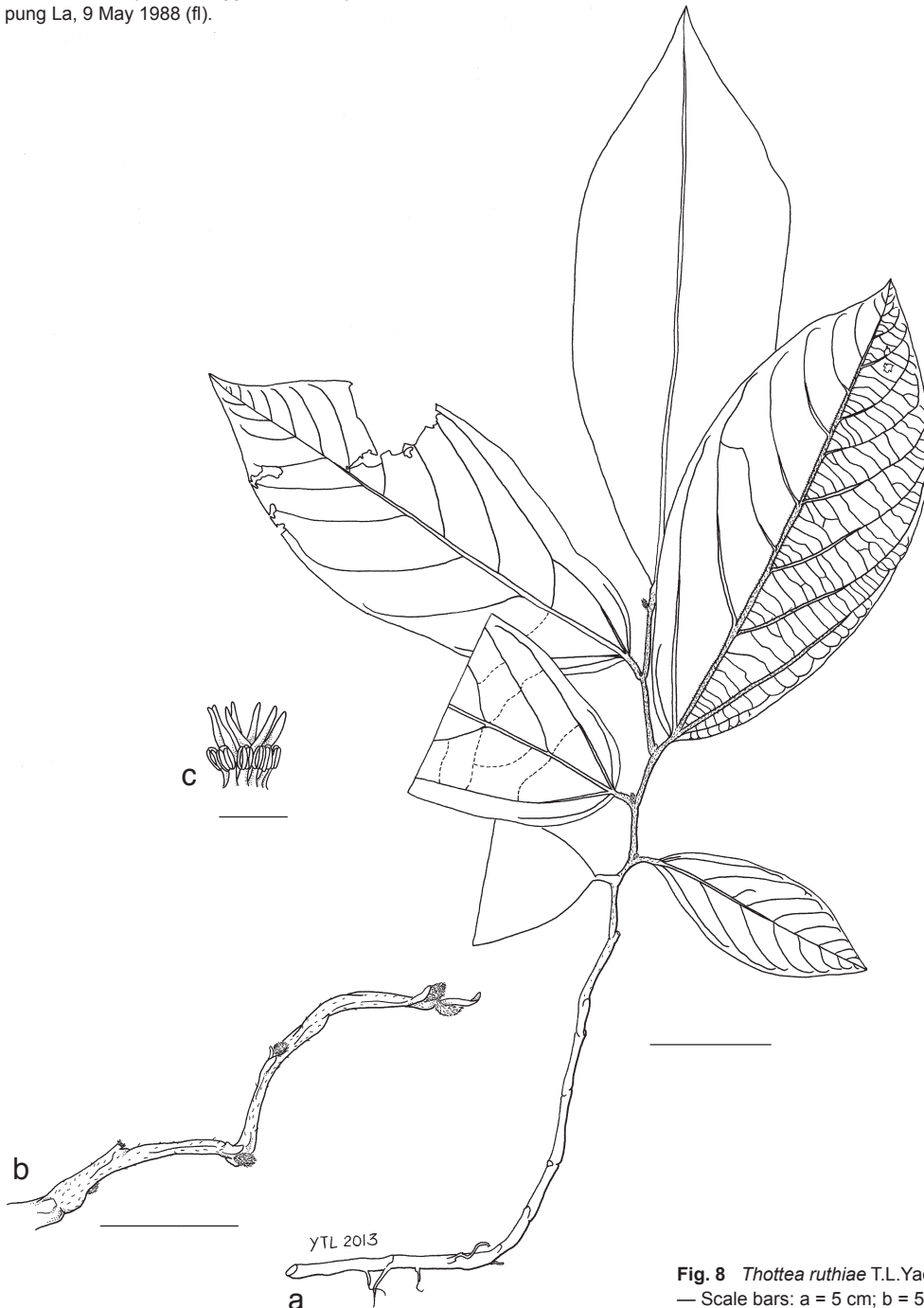
Note — For comparison of *T. reflexa* and *T. grandiflora* see Table 7.

**8. *Thottea ruthiae* T.L.Yao, sp. nov.** — Fig. 8, 10h; Map 2

This species is similar to *T. sumatrana* in its lanceolate lamina with rounded base, its puberulent lower lamina surface and stamens arranged in one whorl but it is different in its inflorescence position at the stem base close to ground level (not in the axils of foliage leaves as in *T. sumatrana*) and the greater stamen number 10 (not consistently 6). — Type: Kiew RK 2703 (holo KEP 192448, a rehydrated flower preserved in Copenhagen mixture), Peninsular Malaysia, Terengganu, Jertih, hydro-intake across river from Kampung La, 9 May 1988 (fl).

*Etymology.* Ruth Kiew, born 1946; a Malaysian botanist, best known for her research on *Begonia* (*Begoniaceae*) and the herbaceous and limestone flora. Project coordinator and chief editor of Flora of Peninsular Malaysia project based in KEP.

Shrub, c. 0.3 m tall, stem slender, erect, scarcely branched, pendent at top. *Stems* dark green, c. 4 mm diam, surface smooth, puberulent; nodes indistinct. *Leaves:* foliage leaves c. 6 on one stem; petiole slender, c. 10 mm long, c. 3 mm diam, densely pubescent; lamina green above, pale green beneath, drying brown, lanceolate, c. 20.5 by 8 cm, first foliage lamina distinctly smaller, narrowly lanceolate, c. 9.5 by 4 cm, thinly leathery, indumentum beneath pubescent, base cuneate or rounded, margin entire, apex blunt or acute; midrib above flat, below prominent; venation pinnate with basal pairs, above faint, below prominent, basal pairs 2, upper basal pair less than, or sometimes more than half of the lamina length, lateral pairs 5–7; intercostal veins a mix of ladder-like and net-like, ladder-like veinlets more pronounced. *Inflorescences* at base of stem close to ground level, solitary; peduncle not branched, c. 25 mm long, c. 1 mm diam, pubescent; bracts oblanceolate, c. 1.5



**Fig. 8** *Thottea ruthiae* T.L.Yao. a. Habit; b. inflorescence; c. gynostemium. — Scale bars: a = 5 cm; b = 5 mm; c = 2 mm (all: Kiew RK 2703, KEP).



**Table 8** Comparison of *Thottea ruthiae* and *T. sumatrana*.

	<i>T. ruthiae</i>	<i>T. sumatrana</i>
Lamina base	cuneate or rounded	rounded
Inflorescences	at base of stem close to ground level	in axils of foliage leaf
Peduncle length (cm)	c. 2.5	7.5–10.5
Perianth colour	white with purple veins	cream on outer surface, a shade of dull crimson on inner surface
Perianth shape	3-lobed; lobes shallowly deltoid	3-lobed, lobes deeply dissected to the base, base not distinctly contracted; lobes oblong, flared
Perianth length by diam (cm)	c. 0.5 by 0.7	c. 3.5 by 3.5
Stamens	c. 10 in 1 whorl	consistently 6 in 1 whorl
Stigmatic lobe number	c. 7	consistently 3

by 1 mm, pubescent, apex blunt, venation obscure. *Flowers* erect; pedicel and ovary c. 0.7 cm long, ovary c. 1 mm diam, pubescent; perianth white with purple veins, 3-lobed, c. 0.5 cm long, c. 0.7 cm diam, outer surface pubescent, inner surface sparsely puberulent; perianth lobes shallowly deltoid, c. 2 by 7 mm, apex blunt, sparsely puberulent but thinning out towards centre; stamens c. 10 in 1 whorl, filamentous; filament c. 0.3 mm long, glabrous; anthers positioned at the swollen connective apex, narrowly oblong, c. 0.7 mm long, c. 0.2 mm wide; style column cylindrical, c. 0.7 mm long, glabrous; stigmatic lobes c. 7, positioned higher than stamens, c. 0.7 mm long, glabrous. *Capsule* and *seed* unknown.

**Distribution** — Endemic to Peninsular Malaysia, known only from Kampung La, Terengganu.

**Ecology** — Riverine forest, common in undergrowth.

**Conservation status** — Critically Endangered B2ab(iii). This species has not been collected in the past 20 years. It is only known from the type specimen and the type locality does not occur within the network of Totally Protected Area.

**Note** — For comparison of *T. ruthiae* and *T. sumatrana* see Table 8.

### 9. *Thottea terengganuensis* T.L.Yao, *sp. nov.* — Fig. 9, 10i; Map 2

This species is similar to *T. grandiflora* in its broadly lanceolate lamina with rounded base, densely pubescent lower lamina surface and stamens arranged in two whorls but it is different in its inflorescences positioned at stem base close to ground level (not in axils of foliage leaf or at nodes of stem below foliage leaves well above ground level), its 3-lobed perianth with a bowl-shaped base (not bell-shaped) and its pubescent capsule (not villose). — Type: *Sam & Mohd Aidil FRI 68960* (holo KEP 192450; iso K, L), Peninsular Malaysia, Terengganu, Dungun, Jengai FR, 21 Apr. 2009 (fl).

*Thottea tomentosa* auct. non (Blume) Ding Hou: Hou (1984) 79, p.p.

**Etymology.** From Terengganu, Peninsular Malaysia, where it is locally widespread.

Shrub, 0.4–0.8 m tall, stem slender, erect, scarcely branched, pendent at top. *Stems* dark green, 4–6.5 mm diam, surface smooth, pubescent; nodes indistinct. *Leaves:* bract-like reduced leaves 2–8, foliage leaves (2–)4–6 on one stem; petiole rather stout, 4–8 mm long, 2–3.5 mm diam, densely pubescent; lamina dark green above, pale green beneath, drying brown, obovate or broadly lanceolate, (11.5–)19.5–30 by (6.5–)12–13.5 cm, first foliage lamina sometimes distinctly smaller, ovate, 11–16 by 5–5.5 cm, thinly leathery, indumentum beneath densely pubescent, base cuneate or rounded, margin entire, near base of dried specimens often in-folded, apex blunt or acute; midrib above flat, below prominent; venation pinnate with basal pairs, above faint, below prominent, basal pairs 2, upper basal pair less than, or sometimes more than half of the lamina length, lateral pairs 5–8; intercostal veins a mix of ladder-like and net-like, ladder-like veinlets more pronounced. *Inflorescences* at stem base close to ground level, solitary; peduncle not branched, 8–16 cm long, c. 2.5 mm diam, pubescent; bracts green, lanceolate or ovate, 7–8 by c. 4 mm,

densely pubescent, apex acute, venation obscure or sometimes distinct. *Flowers* erect or held horizontally; pedicel and ovary c. 15 mm long, ovary c. 1.8 mm diam, densely pubescent; perianth claret-coloured on outer surface, cream with claret-coloured rim (or entirely claret-coloured) on inner surface, or entirely claret, 3-lobed, c. 1 cm long, 3.5–5 cm diam, venation distinct, outer surface sparsely pubescent, inner surface puberulent; base contracted into a bowl-shaped cup, c. 0.6 cm deep, c. 0.8 cm diam, inner surface pubescent; perianth lobes shallowly deltoid, spreading, slightly laterally reflexed, c. 15 by 20–23 mm, apex blunt; stamens 24–29 in 2 whorls, upper whorl with 8–10 stamens, lower whorl 16–19, filamentous; filament c. 1 mm long, glabrous; anthers positioned at the swollen connective apex, oblong, c. 1.3 mm long, c. 0.6 mm wide; style column cylindrical, 2.2 mm long, pubescent; stigmatic lobes 10–11, some lobes bifurcate, positioned higher than stamens, c. 2.6 mm long, pubescent. *Capsules* erect, ripening brown, straight, 4-angled, 7.3–7.5 cm long, c. 5.5 mm diam, ferruginous pubescent. *Seeds* ovoid, 3-angled, slightly ridged, margin corrugated, testa surface pimply, c. 3.5 by 2 mm, apex acute, base rounded.

**Distribution** — Endemic to Peninsular Malaysia, known only from Terengganu.

**Ecology** — Lowland forest. On lateritic earth bank, occasionally by riverside. Persisting in forest gaps.

**Vernacular name** — Hemptu Beruang (Malay).

**Conservation status** — Vulnerable B1ab(iii). This species is confined to a single state and no population occurs in the network of Totally Protected Areas.

**Additional specimens examined.** PENINSULAR MALAYSIA, Terengganu, 34th mile Kuala Terengganu-Besut Road (east side), *Sinclair & Kiah SFN 40768* (SING 97441), 8 Sept. 1955; Bukit Bauk FR, *Zainudin AZ 2716* (UKMB), 21 Mar. 1989; Kuala Berang, Sungai Berua, indigenous community village, *Zainudin & Wan Faizah AZ 4680* (UKMB 24588), 11 Sept. 1993; Sekayu Recreational Forest, trail between chalet and river, *Yao et al. FRI 65444* (KEP 192696), 8 Apr. 2009 (fl); Dungun, Jerangau FR, buffer zone between compartment 35 and state land, *Lim & Mohd. Hairul FRI 65102* (KEP 192697), 24 July 2009 (fl); Dungun, Pasir Raja FR, Compartment 5, *Yao & Azril FRI 65589* and *FRI 65591* (KEP 192698 and 192699, resp.), 28 June 2011 (fl and fr).

**Notes** — 1. The margin near lamina base of dried specimens is often revolute.

2. There is variation in flower colour. I observed that the Pasir Raja FR population has entirely claret-coloured inner surface perianth in contrast to cream with claret-coloured rim.

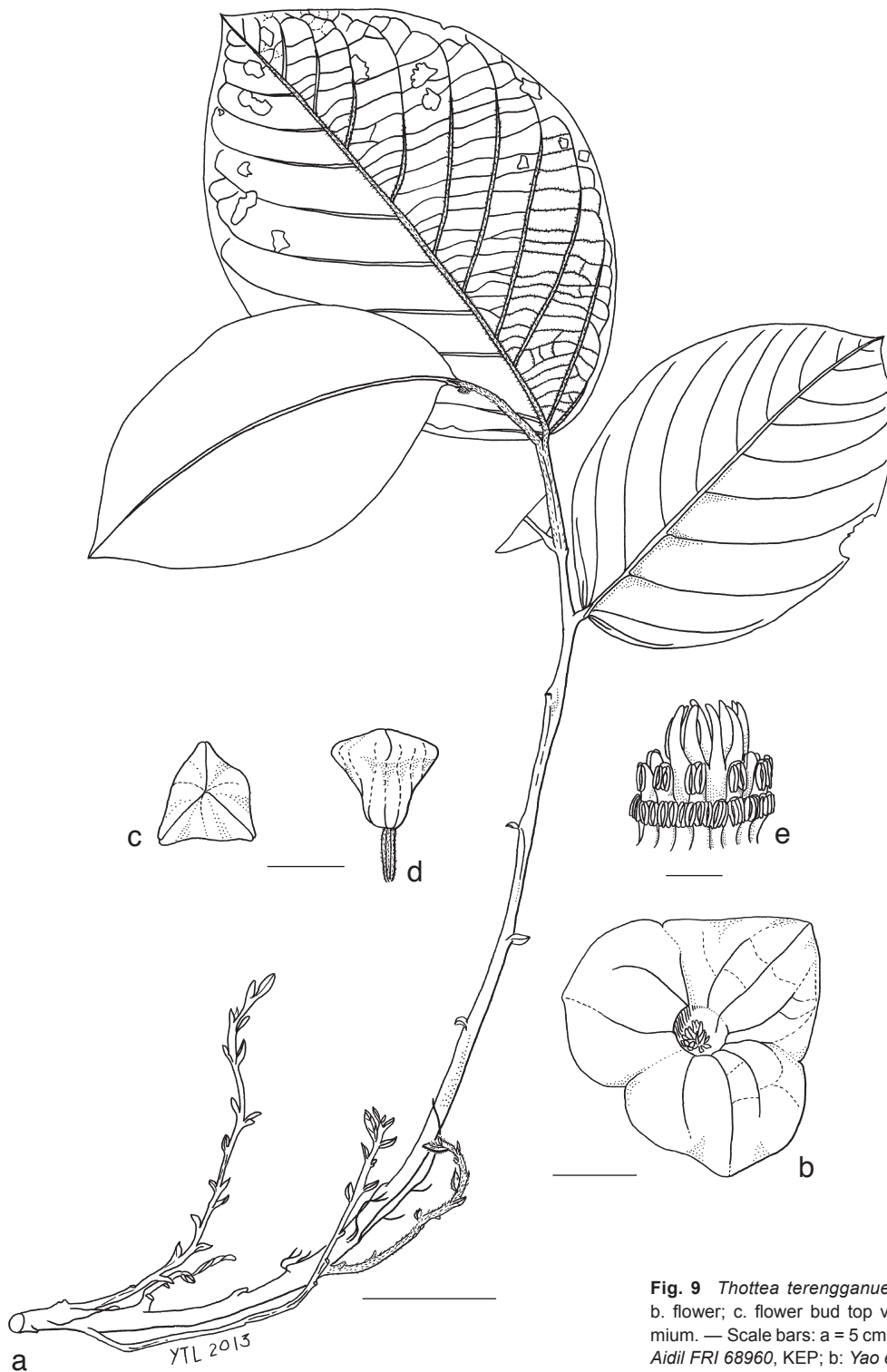
3. At Bukit Bauk, it is sympatric with *T. grandiflora*. Both species look similar when not in flower but *T. terengganuensis* is distinctive in its more prominent tertiary veins and smaller leaves.

4. Small-leaved specimens of *T. terengganuensis* superficially resemble *T. tomentosa* specimens but leaf number per stem is a good character in distinguishing them — *T. terengganuensis* has more than four leaves while *T. tomentosa* usually has up to three.

5. For comparison of *T. terengganuensis* and *T. grandiflora* see Table 9.

**Table 9** Comparison of *Thottea terengganuensis* and *T. grandiflora*.

	<i>T. terengganuensis</i>	<i>T. grandiflora</i>
Lamina: length by width (cm)	obovate or broadly lanceolate: (11.5–)19.5–30 by (6.5–)12–13.5	ovate, oblong, broadly lanceolate or oblanceolate: (16–)21.5–26(–43.5) by (6.5–)10.5–24(–26.5)
Lamina base	cuneate or rounded	cordate, sometimes rounded, rarely truncate
Inflorescences	at base of stem close to ground level	at axils of foliage leaf or at nodes of stem below foliage leaves well above ground level
Perianth colour	claret-coloured outside, cream with claret-coloured rim on inner surface, or entirely claret	dark claret-coloured, outside veins white
Perianth shape	3-lobed, base contracted into a bowl-shaped cup; shallowly deltoid, spreading	bell-shaped, 3-lobed; lobes oblong, rarely deltoid
Perianth length by diam (cm)	c. 1 by 3.5–5	(3–)6–14 by 6–10
Stamens	24–29 in 2 whorls; upper whorl 8–10, lower whorl 16–19	28–42 in 2 whorls; upper whorl 12–18, lower whorl 16–24
Stigmatic lobes number	10–11	10–15
Capsule indumentum	pubescent	villose



**Fig. 9** *Thottea terengganuensis* T.L.Yao. a. Habit and inflorescences; b. flower; c. flower bud top view; d. flower bud lateral view; e. gynostemium. — Scale bars: a = 5 cm; b–d = 1 cm; e = 2 mm (a, c–e: Sam & Mohd Aidil FRI 68960, KEP; b: Yao et al. FRI 65444, KEP).

## REDEFINED TAXA

10. *Thottea dependens* (Planch.) Klotzsch — Map 3

*Thottea dependens* (Planch.) Klotzsch (1859) 589; Duch. (1864) 428; Hook.f. (1886) 74; Ridl. (1900) 127; Gamble (1912) 28; Ridl. (1924) 16; Ding Hou (1981) 311, f. 5–7; (1984) 75, f. 1b.

*Lobbia dependens* Planch. (1847) 144; Miq. (1858) 1068. — Type: *Lobbia* 289 (holo K 575922; iso BM 950665, K 575923, 575924), 'Singapore' (see notes under *T. praetermissa*), 1846.

*Piper arborescens* Roxb. ex Wall. (1832) 224. — Type: *Wallich* 6648B (holo K 575918), Peninsular Malaysia, Penang, 1822.

*Etymology.* Latin, *dependeo* = to hang down; referring to the inflorescence.

Shrub, 0.5–2 m tall, stem slender, erect, scarcely branched, pendent at top. *Stems* dark green, 4–8 mm diam, surface smooth, sparsely puberulent; nodes swollen, above nodes constricted, nodes with repeated flowering thickened. *Leaves:* bract-like reduced leaves c. 4, foliage leaves 6–10 on one stem; petiole stout, 10–18 mm long, 2–3 mm diam, puberulent; lamina pale green beneath, sometimes slightly glaucous or glaucous or drying brown, ovate, obovate, oblong or oblanceolate, (17–)19.5–28.5(–31) by (5.5–)8.5–13(–16) cm, first foliage lamina distinctly smaller, narrowly ovate, c. 4.5 by c. 1.5 cm, thinly leathery, indumentum beneath puberulent, base cuneate or rounded, margin entire, apex acute, acuminate, shortly mucronate or mucronate; midrib above slightly raised, below prominent; venation pinnate with basal pairs, above obscure, below distinct, basal pairs 2, upper basal pair less than, or sometimes more than half of the lamina length, lateral pairs 6–8(–10); intercostal veins a mix of ladder-like and net-like, ladder-like veinlets more pronounced, net-like veinlets obscure. *Inflorescences* on stem below foliage leaves, well above ground level, solitary; peduncle branched, 1–2 time(s), 28–45(–60) mm long, 1–2 mm diam, puberulent or pubescent; bracts green, narrowly oblanceolate or narrowly ovate, (3–)6–10 by (1–)2–4 mm,

pubescent, apex acute, venation obscure or sometimes distinct. *Flowers* pendent; pedicel and ovary 1–2.4 cm long, ovary 0.5–1 mm diam, pubescent; perianth dark magenta throughout, 3-lobed, (0.8–)1.5–2 cm long, (1–)2 cm diam, venation faint, outer surface puberulent or pubescent, inner surface puberulent; base contracted into a bowl-shaped cup, (0.4–)0.7–1 cm deep, (0.8–)0.9–1.5 cm diam, inner surface sparsely puberulent; perianth lobes broadly ovate, flared, (4–)6–10 by 9–13 mm, apex acute; stamens 23–30 in 2 whorls, upper whorl with (8–)11–12 stamens, lower whorl (13–)17–18, filamentous; filament c. 2 mm long, glabrous; anthers positioned at the swollen connective apex, oblong, c. 1.8 mm long, c. 0.4 mm wide; style column cylindrical, c. 2 mm long, glabrous; stigmatic lobes 5–8, positioned higher than stamens, c. 2 mm long, glabrous. *Capsules* pendent, ripening brown, straight to slightly twisted, 4-angled, 130–170 mm long, 3–10 mm diam, puberulent. *Seeds* ellipsoid, 3-angled, slightly ridged, margin corrugated, testa surface transversely strongly wrinkled, 4–5 by 1.5–2 mm, apex and base acute.

*Distribution* — Endemic to Peninsular Malaysia, known from Kedah, Penang, Perak, Negeri Sembilan, Terengganu and Johor.

*Ecology* — 1. Lowland and coastal hill forests. On lateritic ridges and slopes or sometimes on sandy soil, humus layer thin.

2. The fully ripe capsule splits from top to the base exposing a string of seeds covered in white glistening starchy pulp hanging on to the funicles. The dispersal mechanism inferred from this observation as being the white worm-like string of seeds is to attract ground foraging birds to consume the seeds.

Vernacular name — Telinga beruang (Malay).

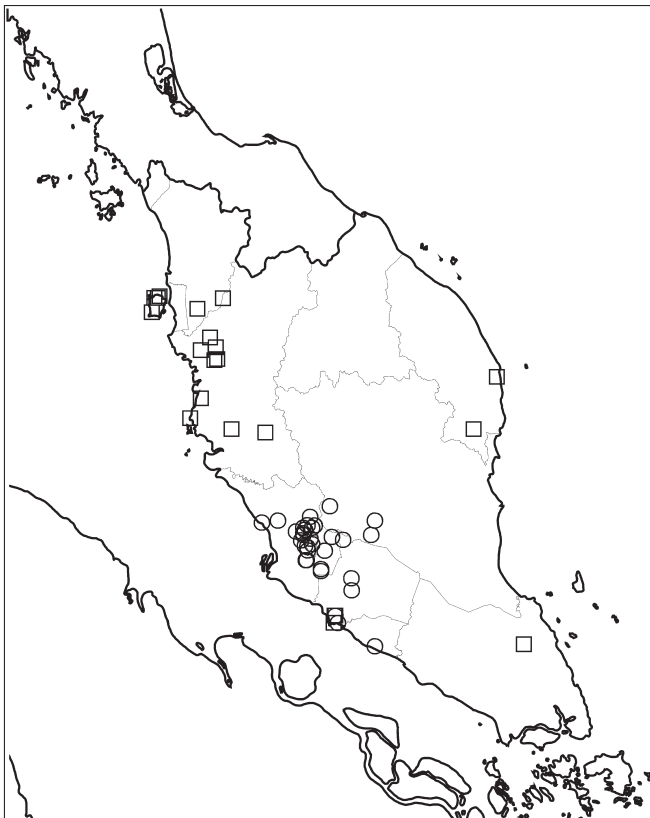
*Conservation status* — Least Concern. This species is widespread and locally common.

11. *Thottea tricornis* Maingay ex Hook.f. — Map 3

*Thottea tricornis* Maingay ex Hook.f. (1886) 74; Gamble (1912) 29; Ridl. (1924) 16; Ding Hou (1981) 318, f. 2, 17, 18, 43, 44, 61, 70B; (1984) 74, f. 7f–i. — Type: *Maingay* 1819 (= Kew Distr. No. 1319) (holo K 575919; iso BM 950668, K 575920, 575921, L 38825), Peninsular Malaysia, Malacca, Aug. 1866.

*Etymology.* Latin, *tri-* = three, *cornis* = horn-shape; referring to the 3-cornered flower buds.

Shrub, 0.65–1.8 m tall, stem stout, erect, scarcely branched, pendent at top. *Stems* dark green, 4–9 mm diam, surface smooth, sparsely puberulent or glabrescent; nodes pronounced. *Leaves:* bract-like reduced leaves 4–5, foliage leaves 7–15 on one stem; petiole stout, 10–15 mm long, 2.5–4 mm diam, puberulent; lamina green above, pale green beneath, drying brown, broadly ovate, narrowly oblanceolate or oblanceolate, (16.5–)22–36.5 by 8–16.5 cm, first foliage lamina distinctly smaller, oblong, c. 6 by 2 cm, papery to thinly leathery, indumentum beneath puberulent, base cuneate, margin entire, apex acute or acuminate; midrib above distinct, below prominent; venation pinnate-acrodromous, above distinct, below prominent, basal pairs 2, upper basal pair more than half of the lamina length, lateral pairs 4–8; intercostal veins a mix of ladder-like and net-like, ladder-like veinlets more pronounced. *Inflorescences* in axils of foliage leaf, solitary; peduncle not branched, 30–60 mm long, c. 1.5 mm diam, densely pubescent or glabrescent; bracts light green, narrowly lanceolate or narrowly oblanceolate, 5–11 by 2–5 mm, densely pubescent, apex acute, venation obscure, sometimes distinct. *Flowers* pendent; pedicel and ovary c. 2 cm long, ovary c. 1 mm diam, pubescent; perianth magenta on outer surface, creamy white on inner surface, 3-lobed, funnel-shaped, base not distinctly contracted, 1.4–1.5 cm long, 1.5–3.5 cm diam, venation faint, outer surface sparsely pubescent, inner surface



**Map 3** Distribution of *Thottea dependens* (□) and *T. tricornis* (○) in Peninsular Malaysia. Note that both species are sympatric in Sungai Menyala Forest Reserve, Negeri Sembilan.



pubescent; perianth lobes faintly deltoid, flared, c. 20 by 2 mm, apex acute or mucronate; stamens 23–26 in 2 whorls, upper whorl with 9–10 stamens, lower whorl 14–16, filamentous; filament c. 0.5 mm long, glabrous; anthers at the swollen apical tip of the filament, oblong, c. 1.2 mm long, c. 0.4 mm wide; style column disc-shaped, c. 2 mm long, glabrous; stigmatic lobes 8–13, positioned higher than stamens, 1–2 mm long, glabrous. *Capsules* pendent, ripening brown, straight to slightly twisted, 4-angled, 95–140 mm long, 4–7 mm diam, densely puberulent. *Seeds* ovoid, 3-cornered, margin corrugated, testa surface pimply, c. 6 by 2.5 mm, acute at both apex and base.

**Distribution** — Endemic to Peninsular Malaysia, known from Perak, Selangor, Negeri Sembilan, Malacca and Pahang. Common and widespread in Selangor but scattered in others states.

**Ecology** — Usually in lowland to hill forests to 760 m altitude, rarely in coastal hill forest. On lateritic earth bank and occasionally by sandy streamside. Persisting in secondary forest and old rubber estates. Kiew (1984) refers to this species. Caterpillar of Golden Birdwing Butterfly feed on this species (Kiew 2010).

**Vernacular names** — Melada, Telinga kelawar (Malay); Chengrus, Geram rengkong, Pokok teringkum, Tusa lanjut (Temuan); Chudok (? Temuan/Jakun).

**Conservation status** — Least Concern. This species is widespread, locally common and persists in old secondary forests.

## LECTOTYPIFIED TAXON

### 12. *Thottea parviflora* Ridl.

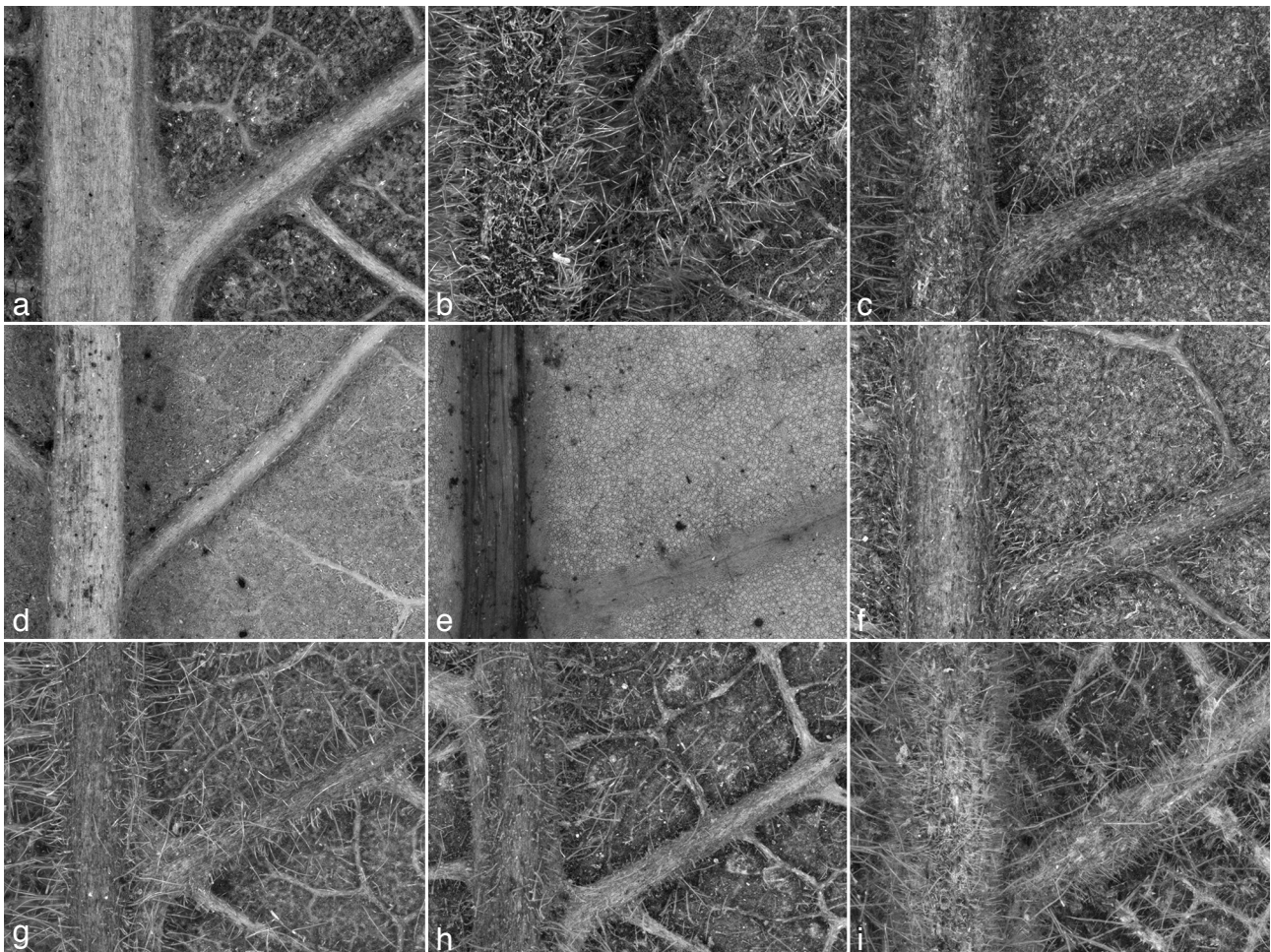
*Thottea parviflora* Ridl. (1910) 89; (1924) 17; Ding Hou (1981) 305, f. 38–40, 70D; (1984) 67, f. 7n–p; Phuph. (1987) 28, f. 18. — Type: *Ridley 14580* (lecto SING 97415, designated here; isolecto BM 950667, K 634535), Peninsular Malaysia, Perak, Temenggor [Temango], July 1909.

I designated *Ridley 14580* as the lectotype because it is the only collection antedating the protologue and it was collected by the author himself.

## CONCLUSIONS

### *Novelties and new characters*

These novelties bring the species number of *Thottea* species in Peninsular Malaysia to 16. The discovery of them also revealed some new characters in Peninsular Malaysian *Thottea*. Creamy white flowers are observed in *T. anthonymsamyi*, *T. piscodora* and *T. reflexa*. Bicoloured flowers are observed in *T. papilionis* where the deep claret-coloured perianth contrast with the creamy white patch on each perianth lobe, and in *T. terengganuensis* with claret on outer surface and claret-coloured rimmed creamy white inner surface. Entirely claret-coloured flowers are also observed in *T. terengganuensis*. Variable flower colouration is not rare in *Thottea* species. *Thottea tomentosa* also has both deep claret-coloured and yellowish cream flowers. Bicoloured flowers and variable flower colouration are also observed in taxa of Western Ghats, India (Shaiju & Omanakumari 2010).



**Fig. 10** Indumentum of lamina lower surface under 20× magnification. a. *Thottea anthonymsamyi*; b. *T. kamarudiniana*; c. *T. longipedunculata*; d. *T. papilionis*; e. *T. piscodora*; f. *T. praetermissa*; g. *T. reflexa*; h. *T. ruthiea*; i. *T. terengganuensis* (a: *Anthonymsamy s.n.*, SING 15183; b: *Sani et al. SM 449*, UKMB; c: *Motan KEP 94538*, KEP; d: *Yao et al. FRI 65421*, KEP; e: *Yao et al. FRI 65443*, KEP; f: *Anthonymsamy SA 917*, KEP; g: *Yao et al. FRI 65597*, KEP; h: *Kiew RK 2703*, KEP; i: *Yao & Azril FRI 65589*, KEP).



The spherical-ovoid perianth of *T. anthonyssamyi* is observed for the first time in *Thottea* species.

The strong rotten fish smell of *T. piscodora* flowers makes it unique among *Thottea* species. Most *Thottea* species have scentless flowers although some of them have the dull red colour of 'carrion flowers' (Polunin 2004), and flies were often observed visiting flowers of *T. tomentosa* (pers. obs.).

Among *Thottea* species, the indumentum of the lower surface of the lamina (see Fig. 10), and the position of the inflorescence are consistent taxonomic characters. Peduncle length does separate some species either those with very long peduncles, viz. *T. longipedunculata* (c. 28 cm) or very short peduncles, viz. *T. ruthiea* (c. 2.5 cm). However, peduncle length in some species, especially those with inflorescences positioned close to ground level, are quite variable, e.g. 4–8(–25) cm in *T. tomentosa*, 8–16 cm in *T. terengganuensis* and 6–12 cm in *T. reflexa*.

The structure of the flower is a crucial specific character. Stamen number of *T. tomentosa* and *T. sumatrana* is consistently 6 but in other species can be quite variable, e.g. 24–30 in *T. praetermissa* and 28–42 in *T. grandiflora*. The number of stamen whorls is, however, consistent within a species. Among Peninsular Malaysian species, *T. piperiformis*, *T. tomentosa*, *T. ruthiea*, *T. reflexa* and *T. sumatrana* have up to 10 stamens arranged in one whorl, while the rest have 2 whorls. (It is not known for *T. kamarudiniana*). Ridley (1924) and Hou (1984) recognised 4 whorls of stamens in *T. parviflora*. My study of a mature flower of *T. parviflora* found the stamens are arranged in two complete whorls with a few others scattered but are not forming a whorl.

The characters of the capsule do not provide much information for species identification. However, the villose capsules of *T. grandiflora* and *T. kamarudiniana* separate them from the rest.

### Conservation status

All novelties except *T. praetermissa* and *T. terengganuensis* have very restricted distributions, many confined to one or two localities. Notably, six out of nine novelties are confined to the east coast of Peninsular Malaysia. IUCN Conservation Status of eight novelties falls in threatened categories of which six are Critically Endangered (Table 10). *Thottea praetermissa* is the only new species with populations occurring within Totally Protected Areas, namely Gunung Ledang State Park and Endau-Rompin State Park, while the habitat of the rest is not protected by legislation related to Totally Protected Areas.

**Acknowledgements** This article is dedicated to Ding Hou (1921–2008), who laid concrete taxonomic foundations for Malesian *Aristolochiaceae*. The present study is part of the 'Flora of Peninsular Malaysia project' (01-04-01-0000 Khas) and 'Documentation & Inventory Flora of Malaysia Project' based at Forest Research Institute Malaysia and fully funded by the Ministry of Science, Technology and Innovation, Malaysia (MOSTI) and 10th Malaysian Plan (RMKe-10), respectively. Curators, keepers and managers of herbaria (BM, K, KLU, L, SING, SINU, UKMB) are gratefully acknowledged for allowing me to examine or loan the specimens in their care. I thank R. Kiew, L.G. Saw and R.C.K. Chung (KEP) for their advice and comments on the manuscript. I am also grateful to R. Kiew for her interest on this genus and

valuable advice throughout my study. J.F. Veldkamp (L) is acknowledged for his advice and suggestions on species naming. I thank Forestry Department of Peninsular Malaysia, State Forestry Departments for granting me permission to carry out field work in the forest reserves under their authority. S. Anthonyssamy is gratefully acknowledged for guiding in the field. I thank P.K.F. Leong (SING) for sending me the flowers of Singapore specimens in spirit. M. Sani (UKMB) communicated the exact locality of *T. kamarudiniana*; Wan Husin, Forest Ranger of Terengganu Forestry Department provided the map of Pasir Raja Forest Reserve and S. Ismail of Terengganu Forestry pointed me to flowering individuals of *T. reflexa* in Lata Tembakh Recreational Forest. They are all gratefully acknowledged for their helpfulness. I am indebted to the KEP team: A. Angan, A. Azril, M.A. Mohd Hairul, A. Mohd Nazri and A. Norzamli for their competent assistance in the field. I thank P.T. Ong and J.P.C. Tan (KEP) for taking care of the living collections in the nursery. Last but not least, I would like to thank the anonymous reviewers and editor for improving the manuscript.

### REFERENCES

- Beccari O. 1870. Illustrazione di Nuove Specie di Piante Bornensi. Nuovo Giornale Botanico Italiano 2: 5–8.
- Chua LSL. 2012. Conservation. In: Kiew R, Chung RCK, Saw LG, Soepadmo E (eds), Flora of Peninsular Malaysia, Ser. II, 3: 3–10. Malayan Forest Record 49, Forest Research Institute Malaysia, Kepong, Malaysia.
- Duchartre P. 1864. Aristolochiaceae. In: De Candolle AP, Prodromus systematis naturalis regni vegetabilis 15, 1: 421–498. Sumptibus Sociorum Treuttel & Würtz, Paris, France.
- Faridah-Hanum I, Khamis S, Manap TA, Suterisno SE, Latifah ZA, Mohd Nasir Mohamad, Ibrahim AZ, Latiff A. 2006. An annotated checklist of seed plants at Pasir Raja Forest Reserve. In: Azahar M, Na'aman J, Mohd Rizal S, Jalil Md S, Nizam MS, Latiff A (eds), Siri Kepelbagaian Biologi Hutan 7: Gunung Mandi Angin, Terengganu. Pengurusan, Persekitaran Fizikal, Kepelbagaian Biologi dan Pelancongan Ekologi: 114–154. Jabatan Perhutanan Semenanjung Malaysia, Kuala Lumpur, Malaysia.
- Gamble JS. 1912. Aristolochiaceae. Flora of Malayan Peninsula. Journal of the Asiatic Society of Bengal 75: 23–33.
- Hooker JD. 1886. Aristolochiaceae. The Flora of British India, 5: 72–77. Reeve & Co. Ltd., Kent, UK.
- Hou D. 1981. Florae Malesianae Praecursores LXII. On the genus *Thottea* (Aristolochiaceae). Blumea 27: 301–332.
- Hou D. 1983. Florae Malesianae Praecursores LXIII. New species of Malesian Aristolochiaceae. Blumea 28: 343–352.
- Hou D. 1984. Aristolochiaceae. Flora Malesiana, Ser. I, 10: 53–108.
- Kiew R. 1984. Notes on the natural history of *Thottea dependens* (Aristolochiaceae) and the occurrence of foliar sclereids within the genus. The Malayan Nature Journal 38: 59–64.
- Kiew R. 2010. Bukit Gasing's hidden treasure: The golden birdwing butterfly. Malaysian Naturalist 63: 10–11.
- Kiew R, Chung RCK, Saw LG, Soepadmo E. 2010. Seed plant families in Peninsular Malaysia. In: Kiew R, Chung RCK, Saw LG, Soepadmo E (eds), Flora of Peninsular Malaysia, Ser. II, 1: 3–20. Malayan Forest Record 49, Forest Research Institute Malaysia, Kepong, Malaysia.
- Kiew R, Rafidah AR. 2007. The flora of Peninsular Malaysia. Conservation Malaysia Bulletin 5: 1–4.
- Klotzsch JF. 1859. Die Aristolochiaceae des Berliner Herbariums. Monatsberichte der Königlich Preussische Akademie der Wissenschaften zu Berlin: 571–626.
- Miquel FAW. 1858. Aristolochieae. Flora van Nederlandsch Indië, 1. 1065–1069.
- Oelschlägel B, Wagner S, Salomo K, Pradeep NS, Yao TL, et al. 2011. Implications from molecular phylogenetic data for systematics, biogeography and growth form evolution of *Thottea* (Aristolochiaceae). The Gardens' Bulletin Singapore 63: 259–275.
- Phuphatanaphong L. 1987. Aristolochiaceae. In: Smitinand T, Larsen K (eds), Flora of Thailand, 5: 1–31. The Forest Herbarium, Royal Forest Department, Bangkok, Thailand.
- Planchon JE. 1847. Observations sur l'Amoreuxia, DC. (Euryanthe, Cham. et Schlecht.) et descriptions des nouveaux genres Roucheria et Lobbia: comme introduction à des mémoires distincts sur les Cochlospermées, Linées et Aristolochiées, familles auxquelles ces genres seront respectivement rattachés. Hooker's London Journal of Botany 6: 139–146.
- Polunin I. 2004. Plants and flowers of Malaysia. Times Editions, Singapore.
- Ridley HN. 1900. The Flora of Singapore. Journal of the Straits Branch of the Royal Asiatic Society 33: 27–196.
- Ridley HN. 1910. A scientific expedition to Temengoh, Upper Perak. Journal of the Straits Branch of the Royal Asiatic Society 57: 5–122.

**Table 10** Conservation status category of the new *Thottea* species.

Category and criteria	Species
Critically Endangered B1ab(iii)	<i>Thottea longipedunculata</i>
Critically Endangered B2ab(iii)	<i>Thottea kamarudiniana</i> , <i>T. papilionis</i> , <i>T. piscodora</i> , <i>T. reflexa</i> , <i>T. ruthiea</i>
Endangered B2ab(iii)	<i>Thottea anthonyssamyi</i>
Rare	<i>Thottea praetermissa</i>
Vulnerable B1ab(iii)	<i>Thottea terengganuensis</i>

- Ridley HN. 1922. Introduction. The Flora of Malay Peninsula 1: ix–xx. Reeve & Co. Ltd., London, UK.
- Ridley HN. 1924. Aristolochiaceae. The Flora of Malay Peninsula 3: 14–19. Reeve & Co. Ltd., London, UK.
- Shaiju PN, Omanakumari N. 2009. Inflorescence morphology and systematics of the genus *Thottea* Rottb. (Aristolochiaceae) from the Western Ghats, India. *Systematics and Biodiversity* 7: 445–451.
- Shaiju PN, Omanakumari N. 2010. Floral morphology and systematics of the genus *Thottea* Rottb. (Aristolochiaceae) from the Western Ghats, India. *Plant Systematic and Evolution* 288: 213–225.
- Van Steenis-Kruseman MJ. 1950. Illustrated alphabetical list of the collectors. *Flora Malesiana*, Ser. I, 1: 5–598.
- Wallich N. 1832. A numerical list of dried specimens of plants in the East India Company's Museum: collected under the superintendence of Dr. Wallich of the Company's botanic garden at Calcutta, no. 6225–7283.

## IDENTIFICATION LIST OF SPECIMENS CONSULTED FOR COMPARISON

- Thottea dependens*:** PENINSULAR MALAYSIA, *Anthonyamy SA 880* (KEP); *Burkill 9027* (SING); *13227* (K, SING); *Corner s.n.* (SING 97360, 97372); *Curtis 1170* (K, SING), *1507* (K, SING), *s.n.* (SING 97365, 97366, 97370); *Imin et al. FRI 74657* (KEP); *Ishak FMS 11304* (KEP); *Mohd Haniff 10557* (SING), *21113* (SING); *Mohd Haniff & Mohd Nur 3407* (SING); *Ng FRI 27375* (KEP); *Ong et al. FRI 71444* (KEP); *Poore 5063* (KLU); *Ridley 10346* (K, SING), *14042* (K, SING), *s.n.* (SING 97362, 97367, 97377); *Sam et al. FRI 47028* (KEP); *Sidek S 295* (K, SING); *Wray Jr. 1318* (K); *Wyatt-Smith KEP 78650* (KEP); *Yao et al. FRI 65471* (KEP).
- Thottea grandiflora*:** PENINSULAR MALAYSIA, *Addison SFN 36993* (SING); *Alvins 2107* (SING), *s.n.* (SING 97410, 97411); *Anthonyamy SA 875* (KEP), *SA 918* (KEP); *Baharudin BB 76* (UKMB); *Burkill & Mohd Haniff 15708* (SING); *Cantley's collector s.n.* (SING 97408); *Chan FRI 23854* (KEP); *Chew FRI 60297* (KEP); *Chew et al. FRI 53714* (KEP), *FRI 60115* (KEP); *Chin & Mustafa 3340* (K, SING); *Corner s.n.* (SING 97385, 97400, 97407, 97409); *Curtis 3662* (SING); *Derry 126* (SING); *Durant FMS 26626* (KEP); *Goodenough 1343* (SING), *1473* (SING); *Griffith 4439* (K); *Henderson SFN 24102* (KEP, SING); *Hervey s.n.* (SING 97401, 97380); *Holtum 9343* (SING), *s.n.* (KEP 183949, SING 97388); *Hou 768* (KEP); *Imin & Wilkie FRI 68079* (KEP); *Kamarudin FRI 28399* (KEP), *KMS 1071* (UKMB); *Kiew RK 830* (KEP), *RK 5089* (KEP, SING), *RK 5229* (SING); *Koenig s.n.* (iso, BM 950666 (<http://plants.jstor.org/specimen/bm000950666>, last accessed 1 Aug. 2013)); *Kunstler 8770* (K); *LaFrankie 2092* (KEP); *Lake & Kelsall s.n.* (SING, mounted on one sheet with *Goodenough 1343*); *Lee LPB 11* (UKMB); *Maingay 1318* (K); *Mohd Nur 798* (KEP); *Mohd Shah & Ahmad MS 2321* (SING); *Mohd Shah & Sanusi MS 2167* (SING); *Mohzan KEP 98185* (KEP); *Ng & Beltran FRI 6403* (KEP); *Nongchie s.n.* (SING 97382); *Ogata FRI 110415* (K, KEP); *Phillips 1644* (KLU); *Poore 892* (KLU); *Ridley s.n.* (SING 97386, 97405); *Rogstad 519* (KEP); *Sam & Apok FRI 47145* (KEP); *Sam & Markandan FRI 47029* (KEP); *Sani & Damanhuri SM 348* (UKMB); *Santiago & Lindong 71405* (KEP); *Saw FRI 44355* (KEP); *Sinclair 8934* (K); *Soepadmo ES 403* (KEP); *Stone 9468* (KLU), *14631* (KLU), *15067* (KLU); *Symington FMS 23341* (KEP), *FMS 24403* (KEP); *T & P 650* (SING); *W.R.S. s.n.* (KLU 15640); *Whitmore FRI 12798* (K, KEP, SING); *Woods KL 1719* (K, KEP); *Yao & Hughes FRI 65369* (KEP); *Yao et al. FRI 65470* (KEP); *Yeop 5888* (KEP); *Zainudin AZ 2638* (UKMB), *AZ 2938* (UKMB); *ZAM 41* (UKMB). – SINGAPORE, *Burkill HMB 3162* (SING), *HMB 3163* (SING); *Dawn s.n.* (SING 3874); *Enoch s.n.* (SINU 2007000008); *Goodenough s.n.* (SING 3883, 3884); *Jumali s.n.* (SINU 2007000009); *Keng 2952* (SINU), *s.n.* (SINU 2007000011); *Kiah s.n.* (SING 3887); *Lai LJ 177* (SING); *Maxwell 78-52* (SINU), *82-27* (KLU, SING); *Mohd Nur NK 155* (SING); *Ridley 178* (K, SING), *3355* (SING), *4691* (K), *s.n.* (SING 3876); *Saat SING 2005-42* (SING); *Samsuri SA 980* (SING); *Samsuri et al. NES 131* (SING).
- Thottea sumatrana*:** PENINSULAR MALAYSIA, *Kiah SFN 35290* (K, SING); *Rahmat si Toroes 5259* (holo NY 285523 (<http://sweetgum.nybg.org/vh/specimen.php?im=601947>, last accessed 29 July 2013), iso US 105817 (<http://collections.mnh.si.edu/search/botany/?ti=3>, last accessed 29 July 2013)); *Syahida Emiza & Kueh FRI 57266* (KEP); *Yao et al. FRI 65484* (KEP).
- Thottea tricornis*:** PENINSULAR MALAYSIA; *Abdullah KL 248* (KEP); *Aminah & Mala s.n.* (UKMB 13855); *Anthonyamy SA 339* (KEP); *AR & ZAI s.n.* (UKMB 02734); *Baharudin BB 44* (UKMB); *Burkill & Mohd Haniff 16765* (SING); *Gaduh KL 646* (KEP), *KL 713* (KEP); *Hamid FMS 10891* (K, KEP, SING); *Hamid et al. PUS 179* (UKMB); *Hassan & Kasim HB 099* (UKMB); *Hughes et al. FRI 59312* (KEP); *Hume 7530* (SING); *9482* (SING); *Imin et al. FRI 58645* (KEP), *FRI 63114* (KEP); *Jamaliah JZED 43* (UKMB); *Jamili JN 69* (UKMB); *Julius et al. FRI 57736* (KEP); *Kamarudin s.n.* (UKMB 12058); *Kiew RK 1028* (KEP), *RK 1238* (SING), *RK 1283* (KEP), *RK 1542* (KEP), *RK 4698* (SING), *s.n.* (SING 15232); *Low 97* (SING); *Mohd Hashim FMS 3029* (KEP); *Mohd Kasim et al. s.n.* (UKMB 01012); *Naimah N 46* (UKMB); *Ng FRI 6277* (KEP); *Provencher Nr T 5*, (SING); *Putz FRI 21985* (KEP); *Razali RS 7* (KEP); *Razali & Rahim RJ 329* (UKMB); *Reid s.n.* (SING 97414); *Sam et al. FRI 47025* (KEP); *Saw FRI 40059* (KEP); *Syahida Emiza & Angan FRI 55036* (KEP), *FRI 55095* (KEP); *Unknown s.n.* (SINU 2007000018); *Wyatt-Smith KEP 76188* (KEP); *Yao FRI 65361* (KEP); *Yao & Kiew FRI 55991* (KEP); *Yao et al. FRI 65466* (KEP).