

## LEGENDS OF THE FIGURES

Fig. 1. *Oberonia myosurus* Lindley

a. Habit; b. Flower; c. Bract; d. Dorsal sepal; e. Lateral sepal; f. Petal; g. Lip; h. Column (ventral view); i. Column (dorsal view); j. Operculum; k. Pollinia (a–k: from *Arora 41332*).

Fig. 2. *Oberonia sulcata* Joseph & Chowdhury

a. Habit; b. Flower; c. Bract; d. Dorsal sepal; e. Lateral sepal; f. Petal; g. Lip; h. Column (ventral view); i. Operculum; j. Pollinia (a–j: from *Joseph 40358*, Type).

Fig. 3. *Oberonia pachyrachis* Rchb. f. ex Hooker f.

a. Habit; b. Flower; c. Bract; d. Dorsal sepal; e. Lateral sepal; f. Petal; g. Lip; h. Column (ventral view); i. Column (dorsal view); j. Operculum; k. Pollinia (a: from *Arora 45508*; b–k: from *Gamble s.n.*).

Fig. 4. *Oberonia sebastiana* Shetty & Vivek.

a. Habit; b. Flower; c. Bract; d. Dorsal sepal; e. Lateral sepal; f. Petal; g. Lip; h. Column (ventral view); i. Operculum; j. Pollinia (a–i: from *Shetty & Vivek. 26480*, Type; j: from *Chandrabose 57782*).

Fig. 5. *Oberonia chandrasekharanii* Nair et al.

a. Habit; b. Flower; c. Bract; d. Dorsal sepal; e. Lateral sepal; f. Petal; g. Lip; h. Column (ventral view); i. Operculum; j. Pollinia (a–j: from *Ramachandran 66948*, Type).

Fig. 6. *Oberonia platycaulon* Wight

a. Habit; b. Flower; c. Bract; d. Dorsal sepal; e. Lateral sepal; f. Petal; g. Lip; h. Column (ventral view); i. Column (dorsal view); j. Operculum (a–j: from *Vivekananthan 48352*).

Fig. 7. *Oberonia seidenfadeniana* Joseph & Vajravelu

a. Habit; b. Flower; c. Bract; d. Dorsal sepal; e. Lateral sepal; f. Petal; g. Lip; h. Column (ventral view); i. Operculum (a–i: from *Joseph 17476*, Type).

Fig. 8. *Oberonia josephii* Saldanha

a. Habit; b. Flower; c. Bract; d. Dorsal sepal; e. Lateral sepal; f. Petal; g. Lip; h. Column (ventral view); i. Column (dorsal view); j. Operculum; k. Pollinia (a–k: from *Yoganarasimhan 291*).

Fig. 9. *Oberonia brunoniana* Wight

a. Habit; b. Flower; c. Bract; d. Dorsal sepal; e. Lateral sepal; f. Petal; g & h. Lip; i. Column (ventral view); j. Operculum; k. Pollinia (h: from *Ellis 43350*; others from MH acc. no. 50133).

Fig. 10. *Oberonia balakrishnanii* Ansari, spec. nov.

a. Habit; b. Flower; c. Bract; d. Dorsal sepal; e. Lateral sepal; f. Petal; g. Lip; h. Column (ventral view); i. Column (dorsal view); j. Operculum; k. Pollinia (a–k: from *Brown 1837*, Type).

Fig. 11. *Oberonia nayarii* Ansari & Balak., spec. nov.

a. Habit; b. Flower; c. Bract; d. Dorsal sepal; e. Lateral sepal; f. Petal; g. Lip; h. Column (ventral view); i. Column (dorsal view); j. Operculum; k. Pollinia (a–k: from *Barber 2687*, Type).

Fig. 12. *Oberonia santapau* Kapadia

a. Habit; b. Flower; c. Bract; d. Dorsal sepal; e. Lateral sepal; f. Petal; g. Lip; h. Column (ventral view); i. Column (dorsal view); j. Operculum; k. Pollinia (a–k: from *Sebastine 18475*).

Fig. 13. *Oberonia anamalayana* Joseph

a. Habit; b. Flower; c. Bract; d. Dorsal sepal; e. Lateral sepal; f. Petal; g. Lip; h. Column (ventral view); i. Column (dorsal view); j. Operculum (a–j: from *Joseph 13537*, Type).

Fig. 14. *Oberonia zeylanica* Hooker f.

a. Habit; b. Flower; c. Bract; d. Dorsal sepal; e. Lateral sepal; f. Petal; g. Lip; h. Column (ventral view); i. Column (dorsal view); j. Operculum; k. Pollinia (a–k: from *C.P. 3869*).

Fig. 15. *Oberonia denticulata* Wight

a. Habit; b. Flower; c & d. Bract; e. Dorsal sepal; f. Lateral sepal; g. Petal; h, i & j. Lip; k. Column (ventral view); l. Operculum; m. Pollinia (d & j: from *Upendranath Kanjilal 4573*; i: from *Joseph 45632*; others from *Barber 6482*).

Fig. 16. *Oberonia maxima* Hooker f.

a. Habit; b. Flower; c. Bract; d. Dorsal sepal; e. Lateral sepal; f. Petal; g. Lip; h. Column (ventral view); i. Column (dorsal view); j. Operculum; k. Pollinia (a–k: from *Hynniewta 74523*).

Fig. 17. *Oberonia lobulata* King & Pantling

a. Habit; b. Bract; c. Dorsal sepal; d. Lateral sepal; e. Petal; f. Lip; g. Column (ventral view) (a–g: from *Pantling 199*, Type).

Fig. 18. *Oberonia arnotiana* Wight

a. Habit; b. Flower; c. Bract; d. Dorsal sepal; e. Lateral sepal; f. Petal; g & h. Lip; i. Column (ventral view); j. Operculum; k. Pollinia (h: from *Sharma 35978*, Type of *O. wightiana* var. *nilgirensis*; others from *Ellis 43394*).

Fig. 19. *Oberonia wightiana* Lindley

a. Habit; b. Flower; c. Bract; d. Dorsal sepal; e. Lateral sepal; f. Petal; g & h. Lip; i. Column (ventral view); j. Operculum (a & h: from *Barber 7523*; others from *Wight 181*, Type).

Fig. 20. *Oberonia myriantha* Lindley

a. Habit; b. Flower; c. Bract; d. Dorsal sepal; e. Lateral sepal; f & g. Petal; h & i. Lip; j. Column (ventral view); k. Operculum; l. Pollinia (g & i: from *Hynniewta 53073*; others from *Hooker f. & Thomson 113*, Type).

Fig. 21. *Oberonia acaulis* Griff.

a. Habit; b. Flower; c. Bract; d. Dorsal sepal; e. Lateral sepal; f. Petal; g & h. Lip; i. Column (lateral view); k. Column (dorsal view); l. Operculum; m. Pollinia (h: from *Hynniewta 80400*; others from *Anima Das s.n.*).

Fig. 22. *Oberonia ensiformis* (Smith) Lindley

a. Habit; b. Flower; c. Bract; d. Dorsal sepal; e. Lateral sepal; f. Petal; g. Lip; h. Column (ventral view); i. Column (dorsal view); j. Operculum; k. Pollinia (a: from *Ramamurthy 23448*; others from *Ellis 37179*).

Fig. 23. *Oberonia thwaitesii* Hooker f.

a. Habit; b. Flower; c. Bract; d. Dorsal sepal; e. Lateral sepal; f. Petal; g. Lip; h. Column (ventral view); i. Column (dorsal view); j. Operculum; k. Pollinia (a–k; *C.P. 2572*, Type).

Fig. 24. *Oberonia verticillata* Wight

a. Habit; b & c. Flower; d. Bract; e. Dorsal sepal; f. Lateral sepal; g & h. Petal; i. Lip; j. Column (ventral view); k. Operculum, l. Pollinia (c: from *Bor s.n.*; h. from *Rao 18268*; others from MH, acc. no. 50115).

Fig. 25. *Oberonia falconeri* Hooker f.

a. Habit; b. Flower; c. Bract; d. Dorsal sepal; e. Lateral sepal; f. Petal; g. Lip; h. Column (ventral view); i. Operculum; j. Pollinia (a–j: from *Subba Rao 28161*).

Fig. 26. *Oberonia pyrulifera* Lindley

a. Habit; b. Flower; c. Bract; d. Dorsal sepal; e. Lateral sepal; f. Petal; g. Lip; h. Column (ventral view); i. Operculum; j. Pollinia (a–j: from *Pantling 191*).

Fig. 27. *Oberonia caulescens* Wall. ex Lindley

a & b. Habit; c & d. Flower; e. Bract; f. Dorsal sepal; g. Lateral sepal; h. Petal; i. Lip; j & k. Column (ventral view); l. Operculum, m. Pollinia (b & d: from *Pantling 227*, Type of *O. longilabris*; k: from *Arora 33821*; others from *Sharma 20315*).

Fig. 28. *Oberonia bicornis* Lindley

a. Habit; b & c. Flower; d. Bract; e. Dorsal sepal; f. Lateral sepal; g & h. Petal; i & j. Lip; k. Column (ventral view); l. Column (dorsal view); m. Operculum; n & o. Pollinia (c, h, j & o: from *Sathish Kumar 509*; others from *Henry 49663*).

Fig. 29. *Oberonia proudlockii* King & Pantling

a. Habit; b. Flower; c. Bract; d. Dorsal sepal; e. Lateral sepal; f. Petal; g. Lip; h. Column (ventral view); i. Column (dorsal view); j. Operculum; k. Pollinia (a–k: from *Vajravelu 43796*).

Fig. 30. *Oberonia prainiana* King & Pantling

a. Habit; b. Flower; c. Bract; d. Dorsal sepal; e. Lateral sepal; f. Petal; g. Lip; h. Column (ventral view); i. Column (dorsal view); j. Operculum; k. Pollinia (a–k: from *a.c.H. 572*).

Fig. 31. *Oberonia emarginata* King & Pantling

a & b. Habit; c & d. Flowers; e & f. Bract; g. Dorsal sepal; h. Lateral sepal; i & j. Petal; k & l. Lip; m. Column (ventral view); n. Column (dorsal view); o. Operculum (a, c, e, g, h, i & k: from *Pantling 423*, Type; others from *Pantling 324*, Type of *O. micrantha*).

Fig. 32. *Oberonia brachystachys* Lindley

a. Habit; b. Flower; c. Bract; d. Dorsal sepal; e. Lateral sepal; f. Petal; g. Lip; h. Column (ventral view); i. Column (dorsal view); j. Operculum; k. Pollinia (a–k: from *Pantling 238*).

Fig. 33. *Oberonia pachyphylla* King & Pantling

a. Habit; b. Flower; c. Bract; d. Dorsal sepal; e. Lateral sepal; f. Petal; g. Lip; h. Column (ventral view); i. Column (dorsal view); j. Operculum; k. Pollinia (a–k: from *Pantling 429*, Type).

Fig. 34. *Oberonia jenkinsiana* Griff. ex Lindley

a. Habit; b. Bract; c. Dorsal sepal; d. Lateral sepal; e. Petal; f. Lip; g. Column (ventral view); h. Column (dorsal view); i. Operculum; j. Pollinia (a–j: from *Pantling 185*).

Fig. 35. *Oberonia brachyphylla* Blatt. & McCann

a. Habit; b. Flower; c. Bract; d. Dorsal sepal; e. Lateral sepal; f. Petal; g. Lip; h. Column (ventral view); i. Column (dorsal view); j. Operculum; k. Pollinia (a–k: from *Nair 56781*).

Fig. 36. *Oberonia recurva* Lindley

a. Habit; b. Flower; c. Bract; d. Dorsal sepal; e. Lateral sepal; f. Petal; g, h & i. Lip; j & k. Column (ventral view); l. Column (dorsal view); m. Operculum; n. Pollinia (h & k: from *Pantling 203*, Type of *O. parvula*; i: from *Pantling 254*, Type of *O. croftiana*; others from *Janardhanan 72019*).

Fig. 37. *Oberonia longibracteata* Lindley

a. Habit; b. Flower; c. Bract; d. Dorsal sepal; e. Lateral sepal; f. Petal; g. Lip; h. Column (ventral view); i. Column (dorsal view); j. Operculum; k. Pollinia (a–k: from *Mohanan 72814*).

Fig. 38. *Oberonia obcordata* Lindley

a & b. Habit; c. Flower; d. Bract; e. Dorsal sepal; f. Lateral sepal; g. Petal; h & i. Lip; j. Column (ventral view); k. Column (dorsal view); l. Operculum; m. Pollinia (b & i: from *Hynniewta 56204*; others from *Pantling 47*).

Fig. 39. *Oberonia rufilabris* Lindley

a. Habit; b. Sterile bract; c. Fertile bract; d. Dorsal sepal; e. Lateral sepal; f. Petal; g. Lip; h. Column (ventral view); i. Column (dorsal view); j. Operculum; k. Pollinia (a–k: from *Panigrahi 22530*).

Fig. 40. *Oberonia falcata* King & Pantling

a & b. Habit; c. Flower; d & e. Bract; f. Dorsal sepal; g. Lateral sepal; h. Petal, i & j. Lip; k. Column (ventral view); l. Operculum; m. Pollinia (b: from *Pantling 454*; e & j: from *Bor's collector 407*; others from *Pantling 218*, Type).

Fig. 41. *Oberonia mannii* Hooker f.

a. Habit; b. Flower; c. Bract; d. Dorsal sepal; e. Lateral sepal; f. Petal; g. Lip; h. Column (ventral view); i. Operculum; j. Pollinia (a–j: from *Pantling 618*).

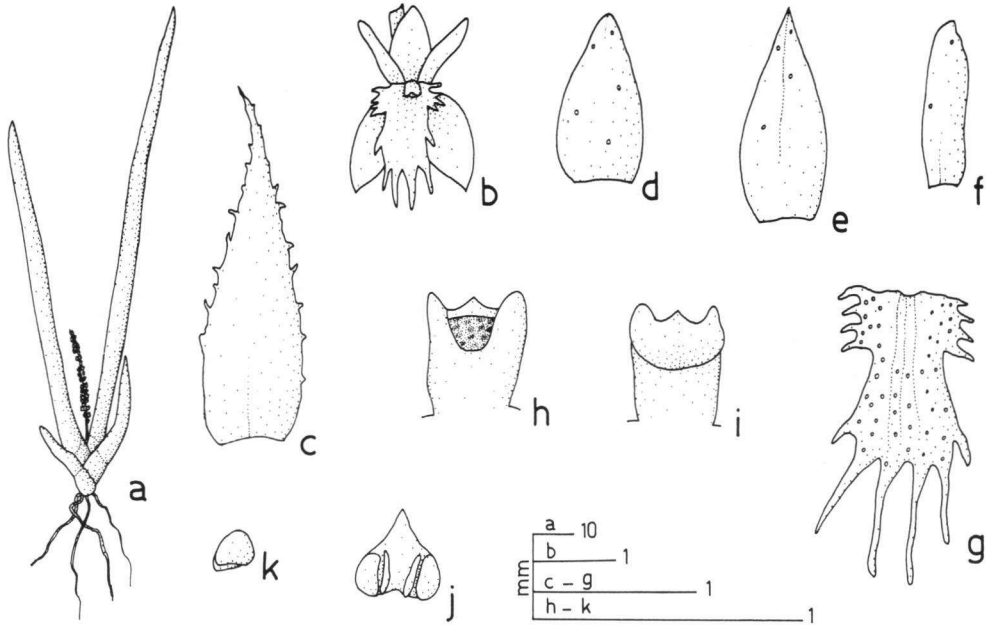


Fig. 1. *Oberonia myosurus* Lindley

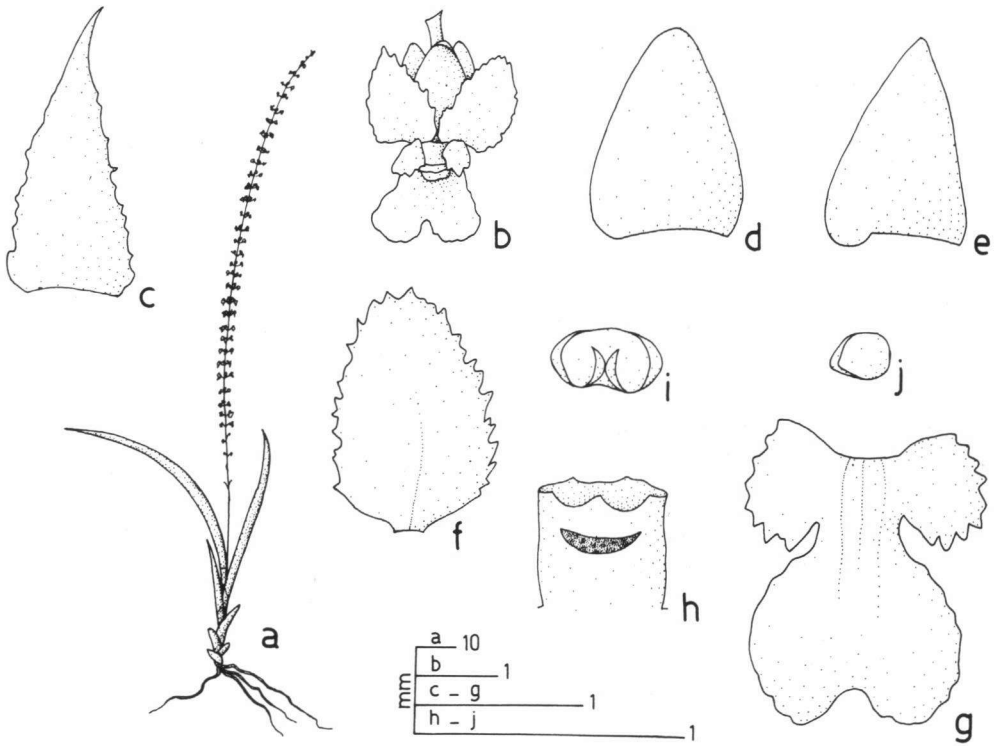


Fig. 2. *Oberonia sulcata* Joseph & Chowdhury

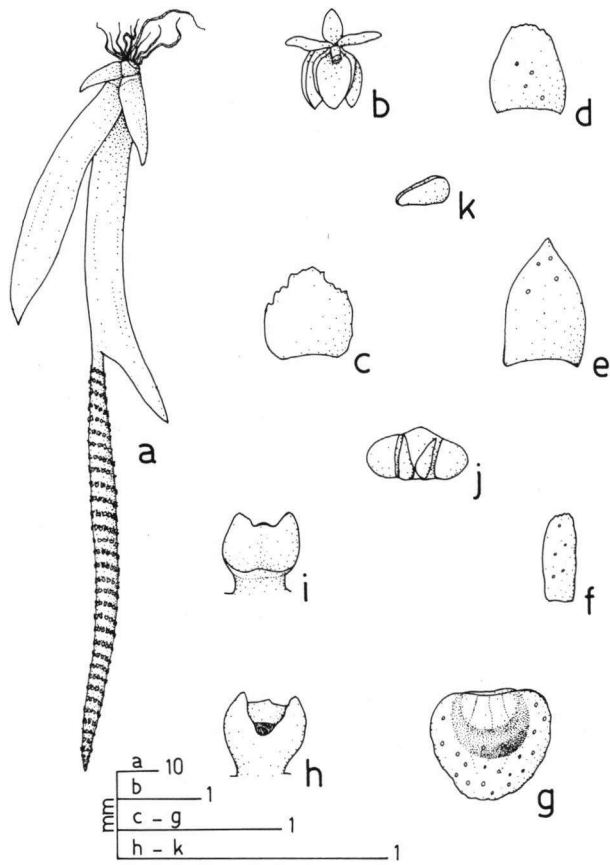


Fig. 3. *Oberonia pachyrachis* Rchb. f. ex Hooker f.

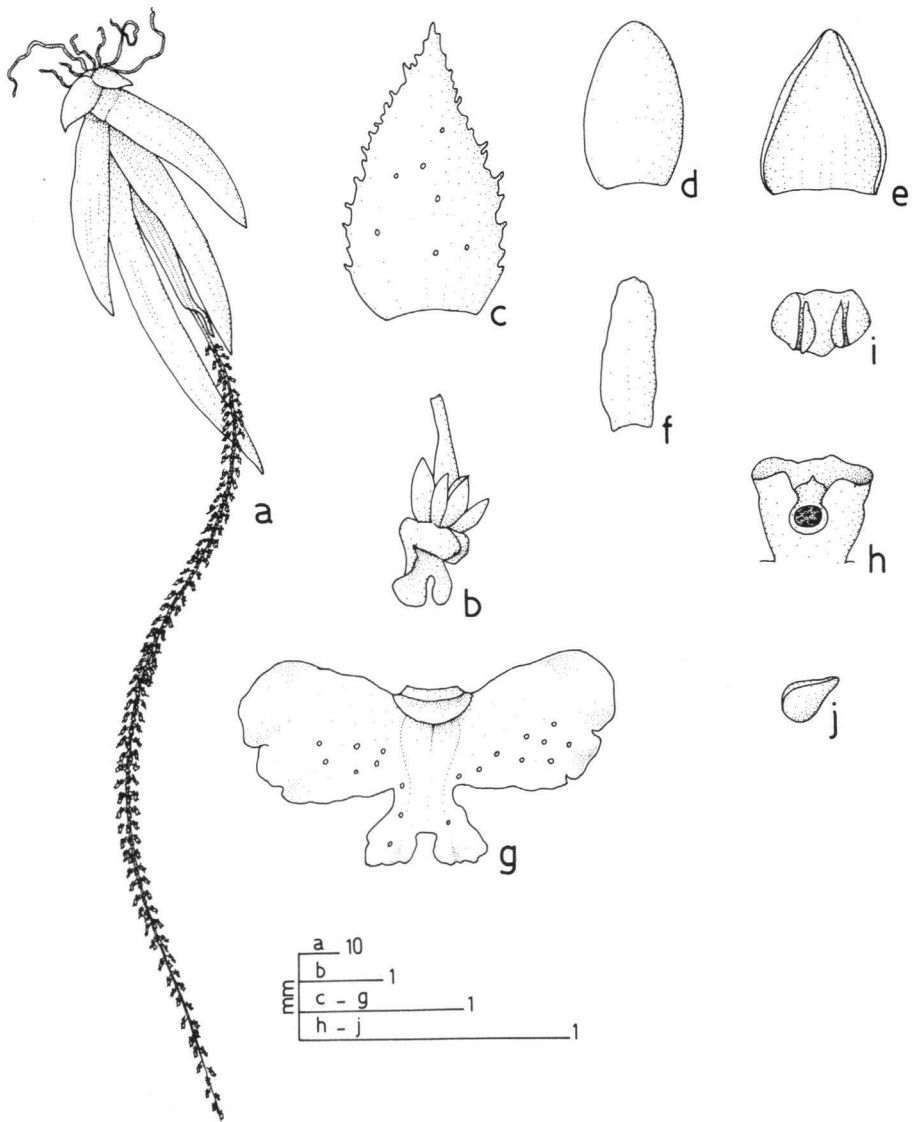


Fig. 4. *Oberonia sebastiana* Shetty & Vivek.

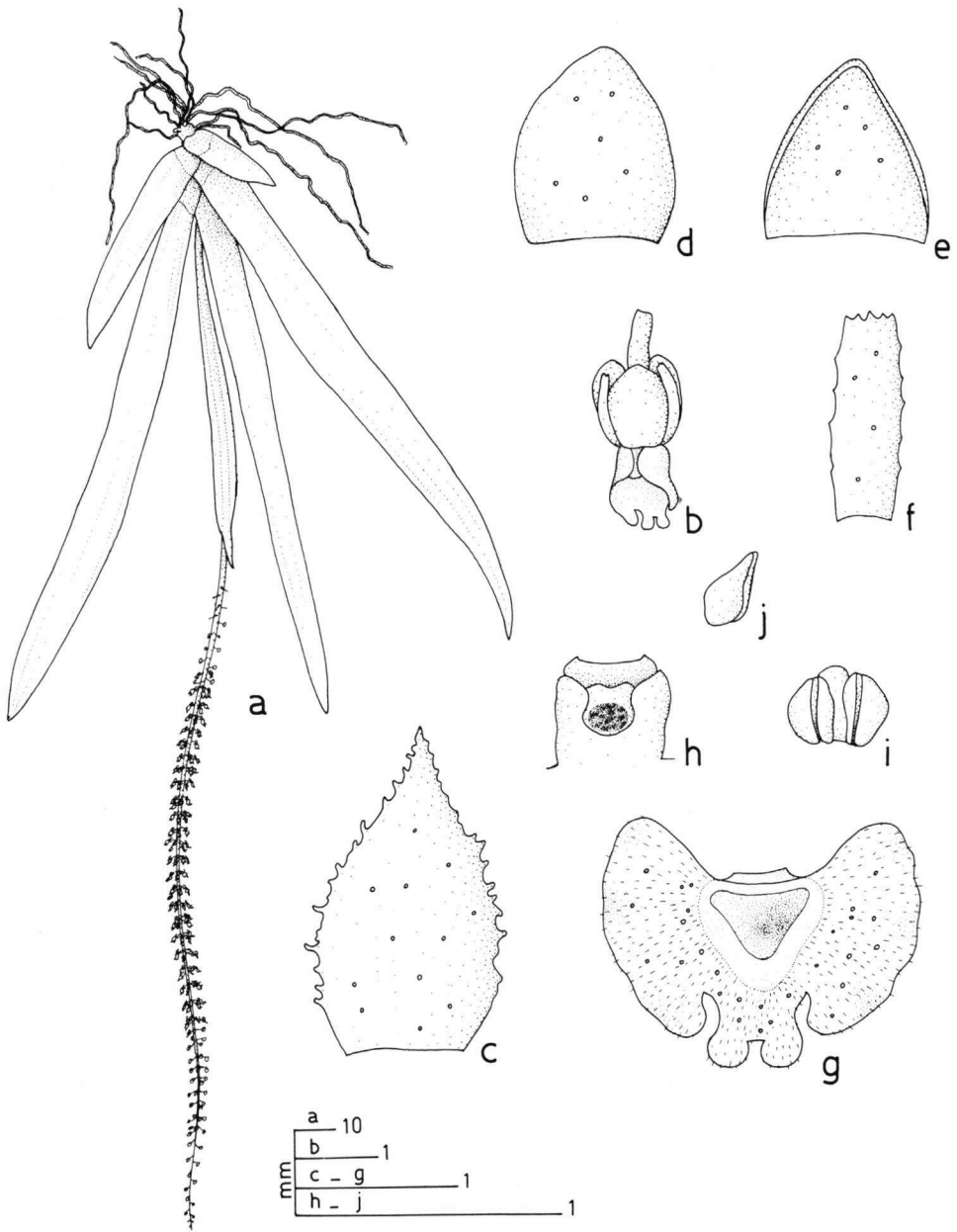


Fig. 5. *Oberonia chandrasekharanii* Nair et al.



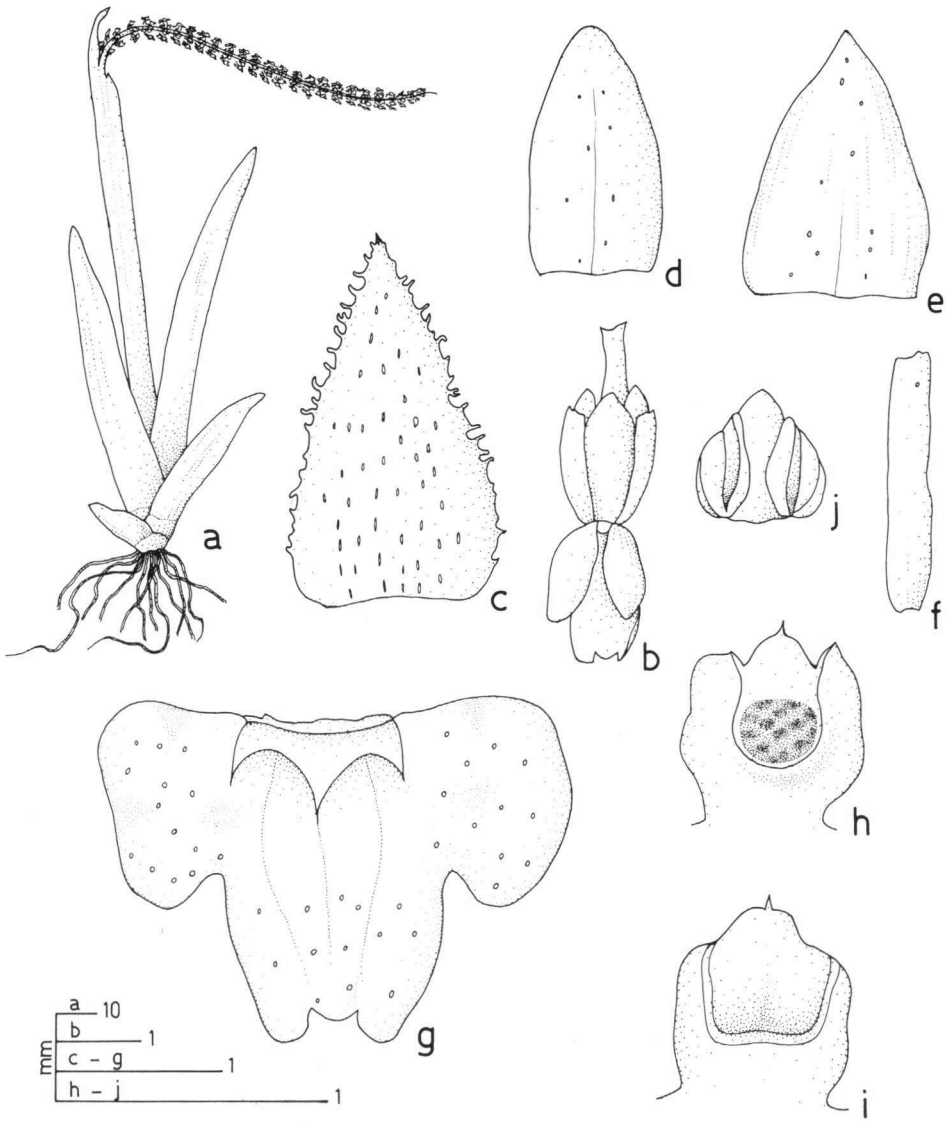


Fig. 6. *Oberonia platycaulon* Wight

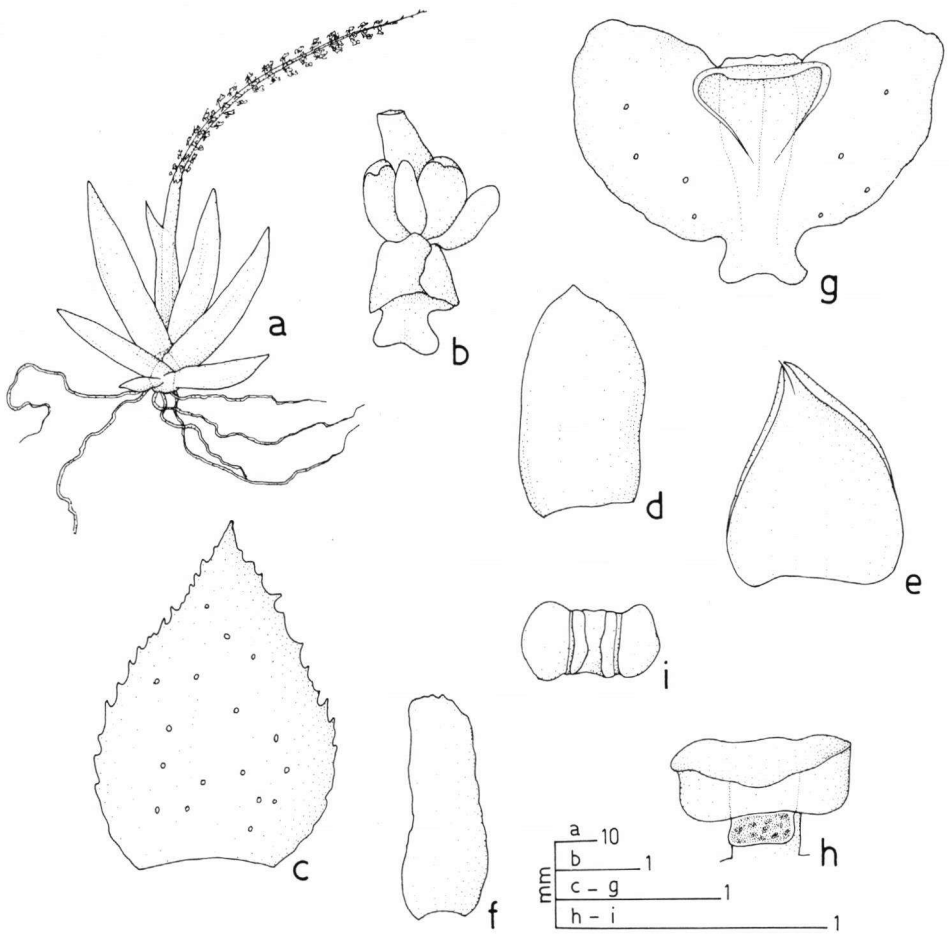


Fig. 7. *Oberonia seidenfadeniana* Joseph & Vajravelu

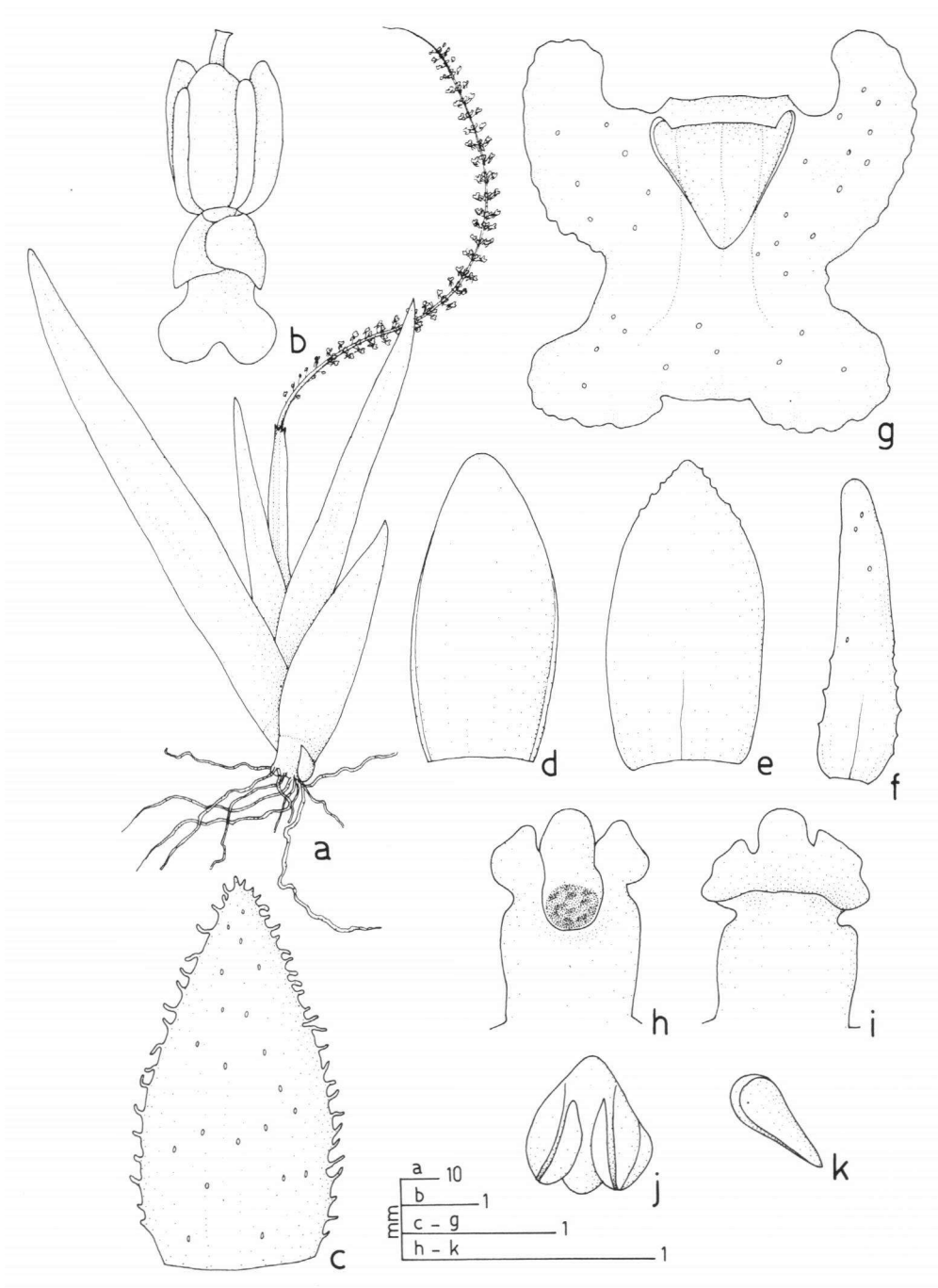


Fig. 8. *Oberonia josephii* Saldanha

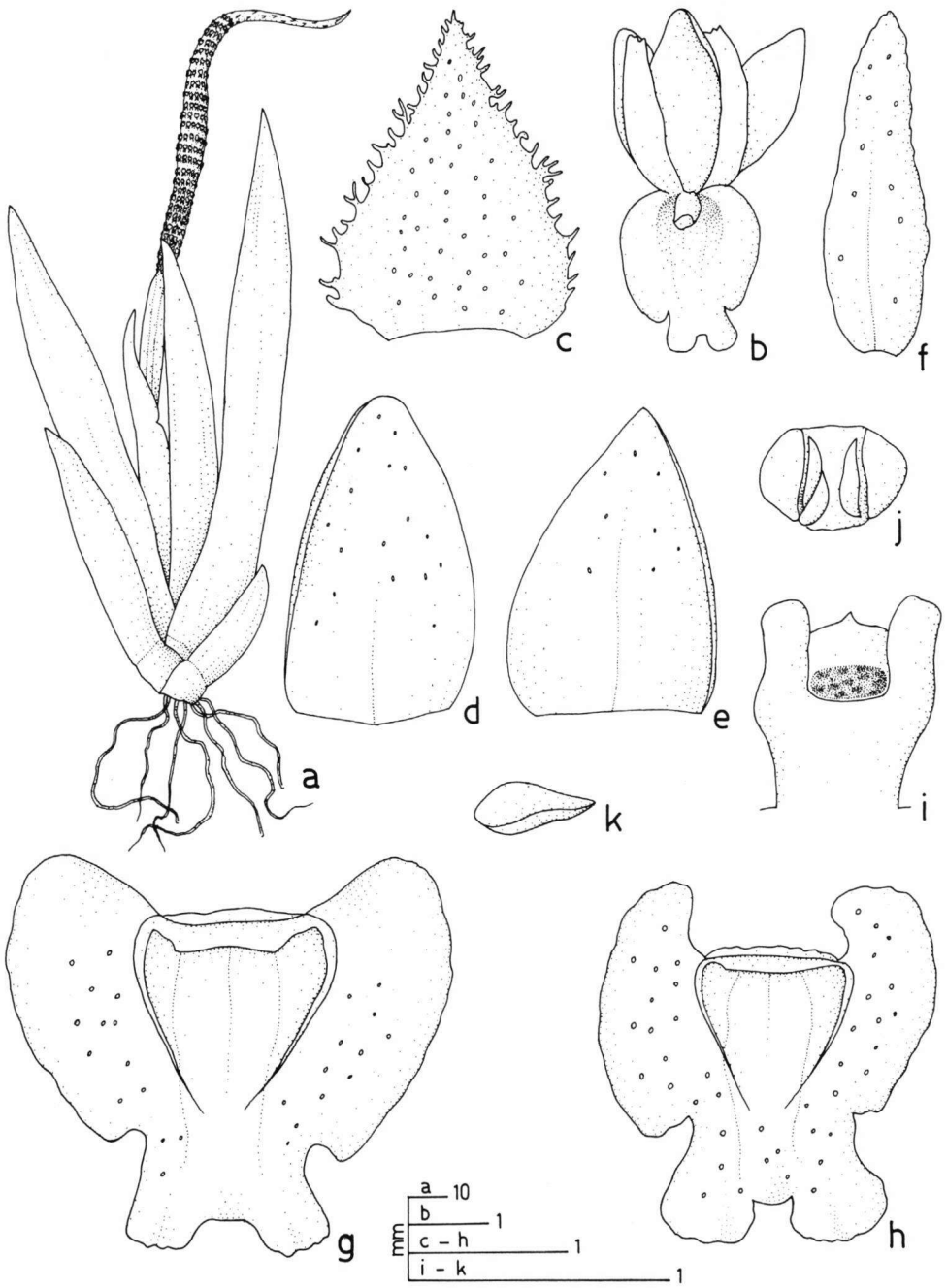


Fig. 9. *Oberonia brunoniana* Wight

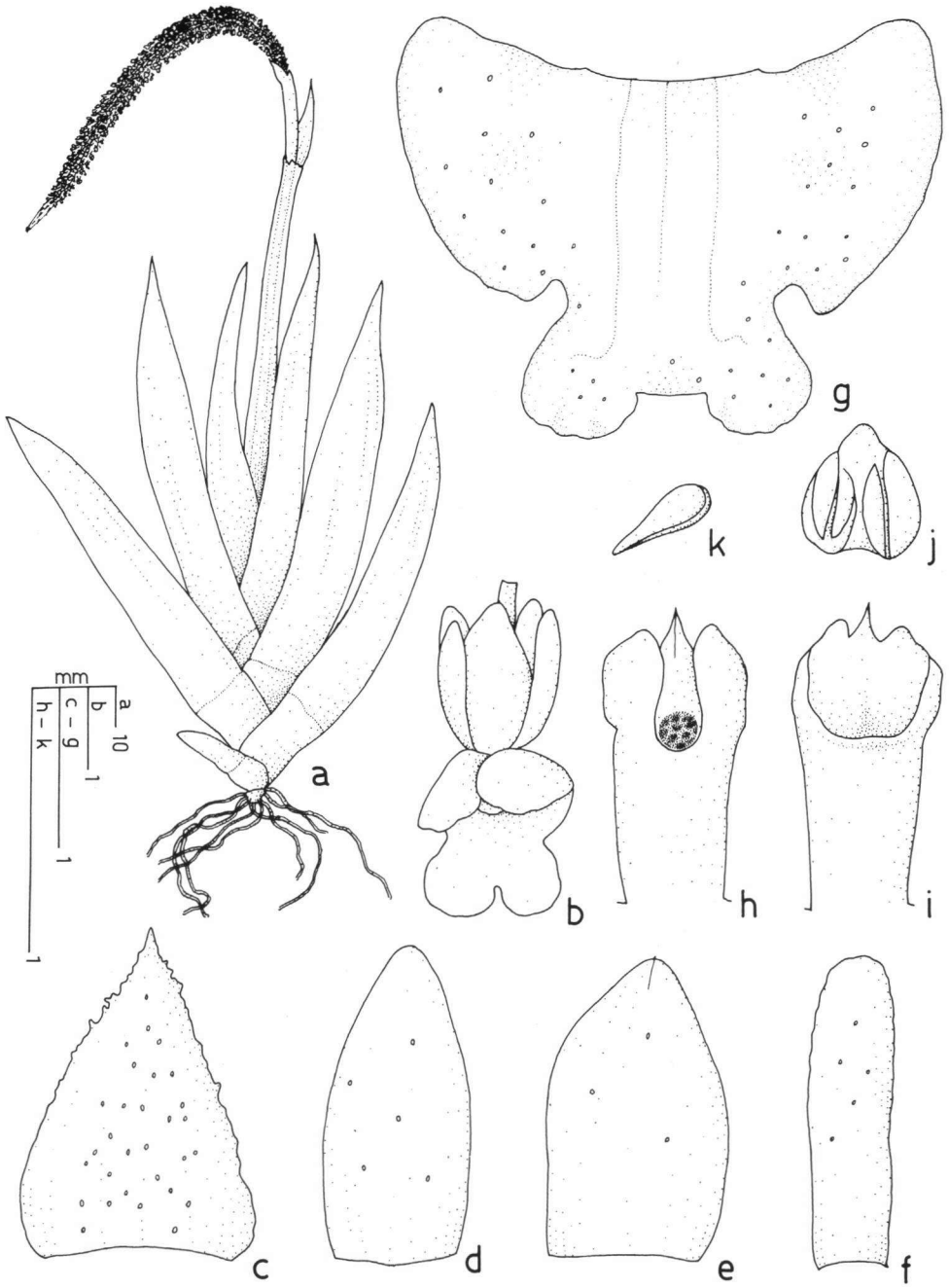


Fig. 10. *Oberonia balakrishnanii* Ansari, spec. nov.

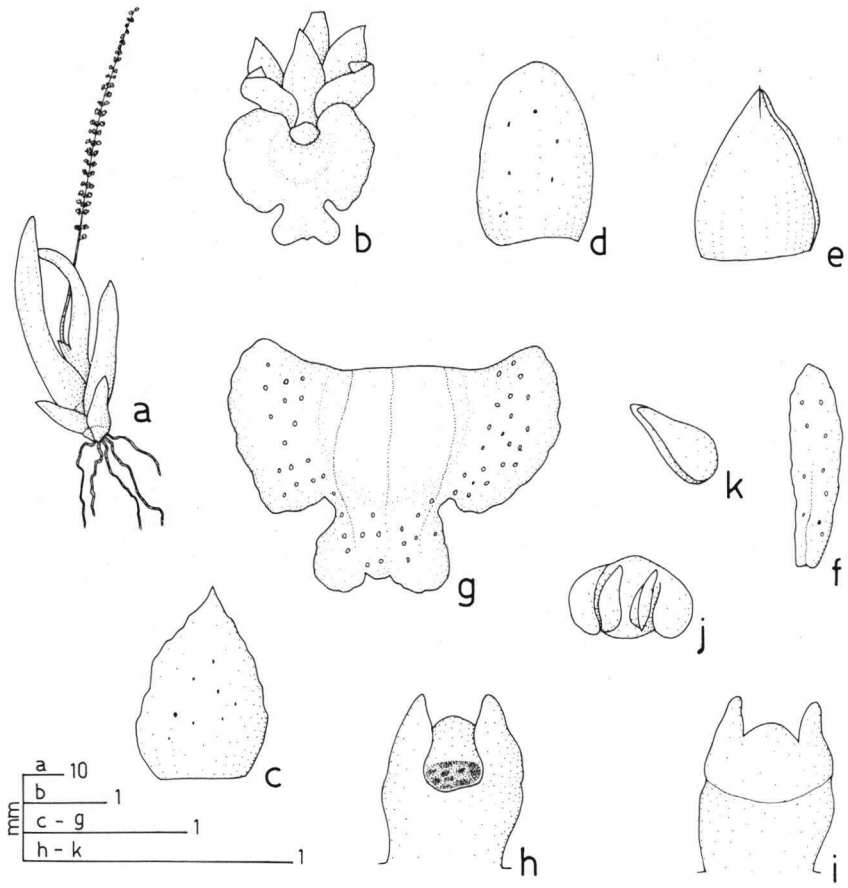


Fig. 11. *Oberonia nayarii* Ansari & Balak., spec. nov.

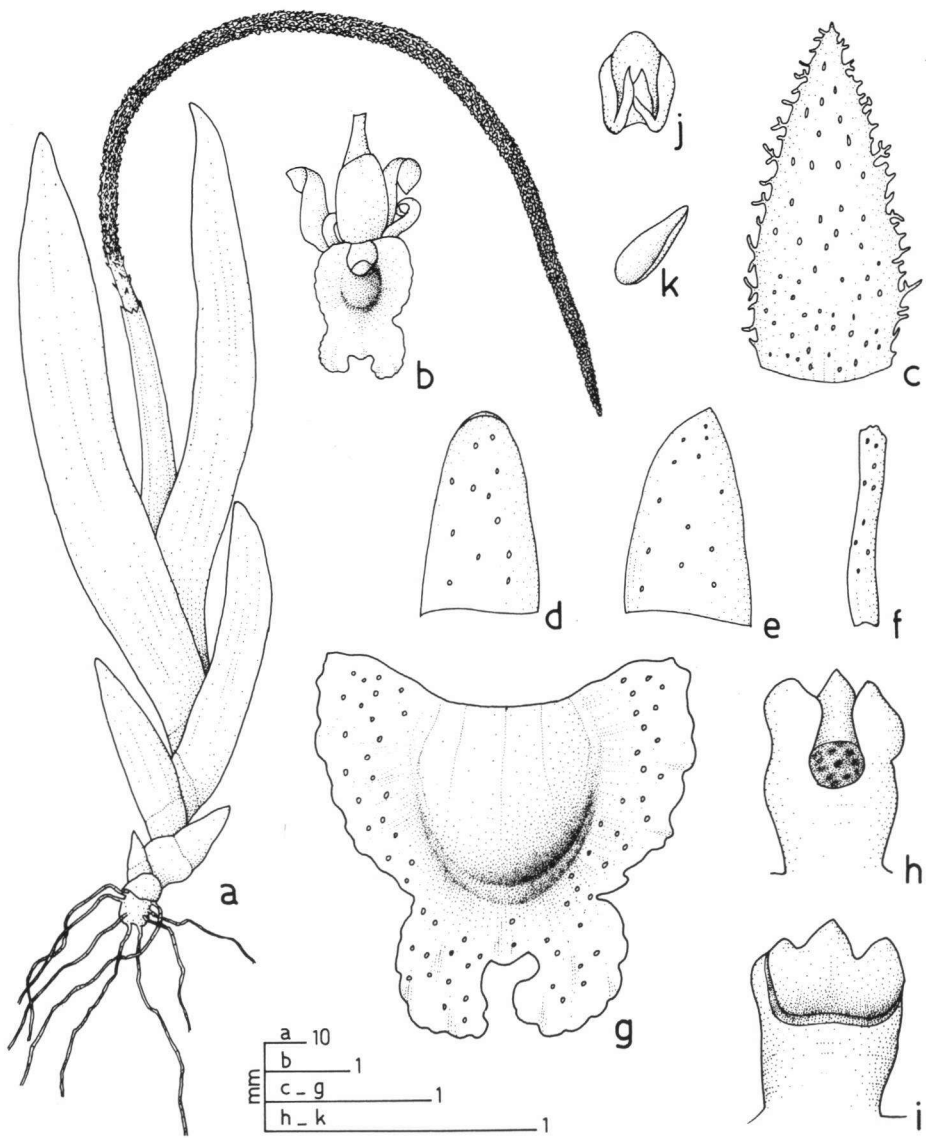


Fig. 12. *Oberonia santapauī* Kapadia

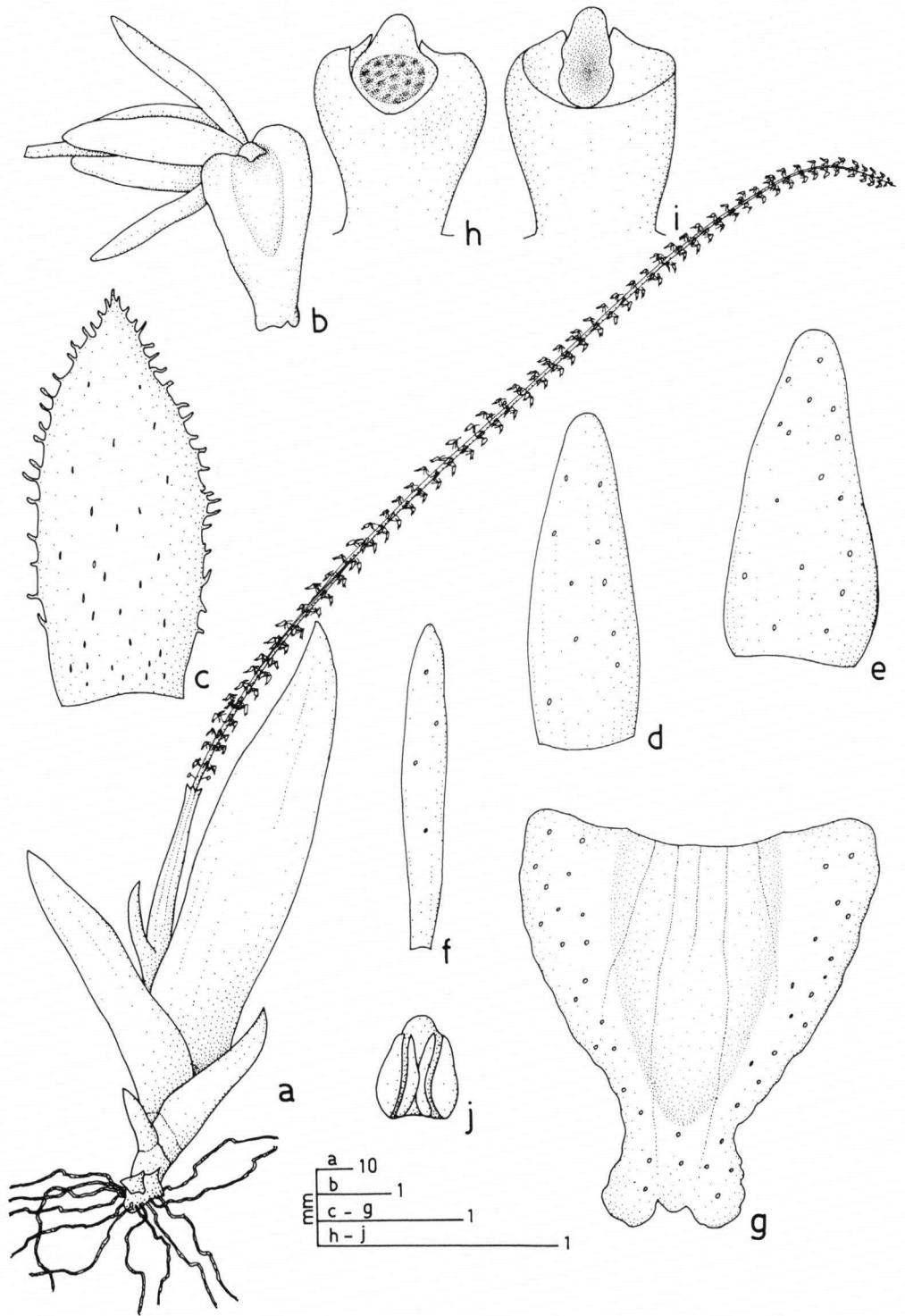


Fig. 13. *Oberonia anamalayana* Joseph



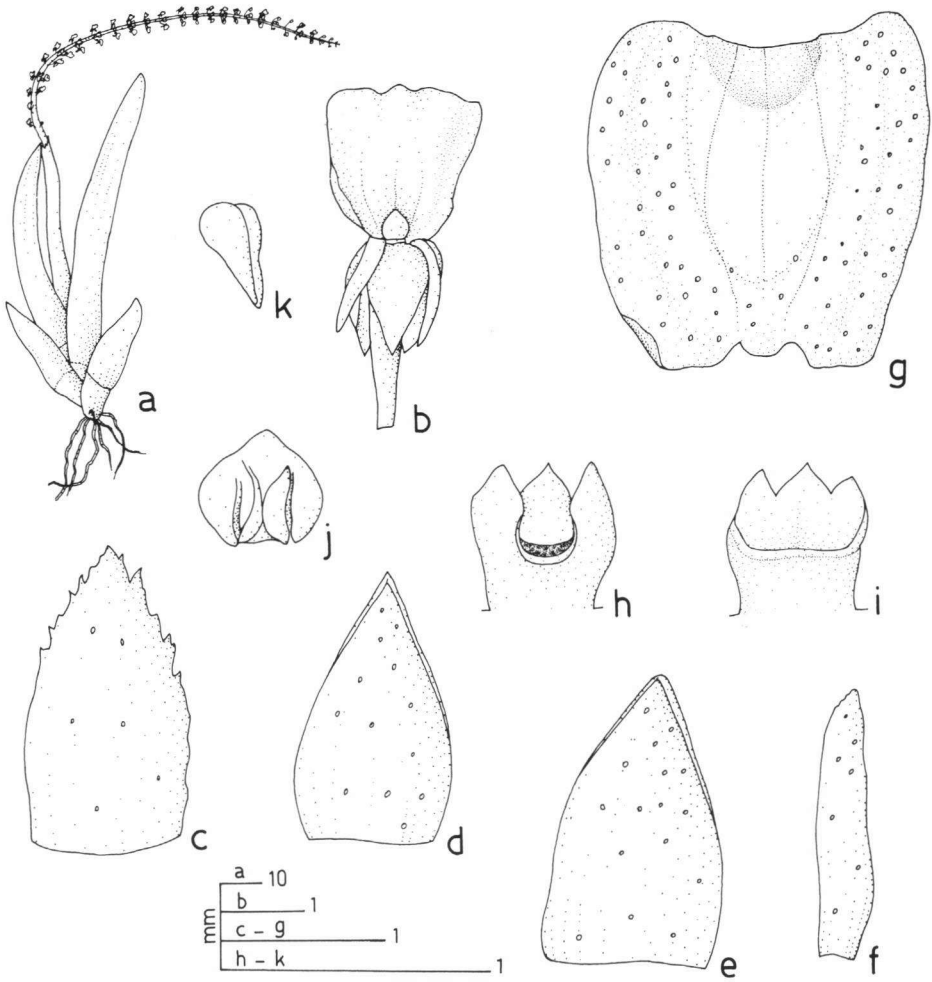


Fig. 14. *Oberonia zeylanica* Hooker f.

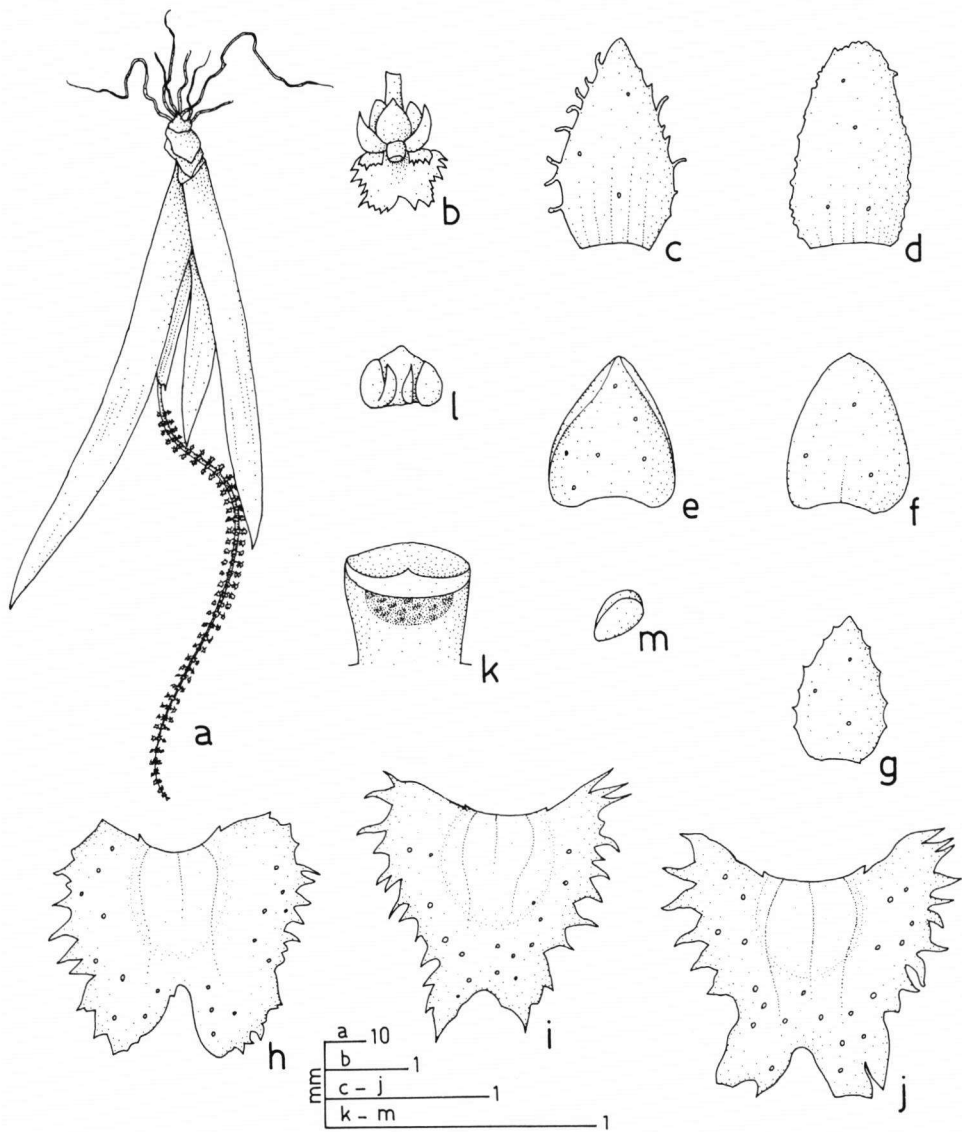


Fig. 15. *Oberonia denticulata* Wight

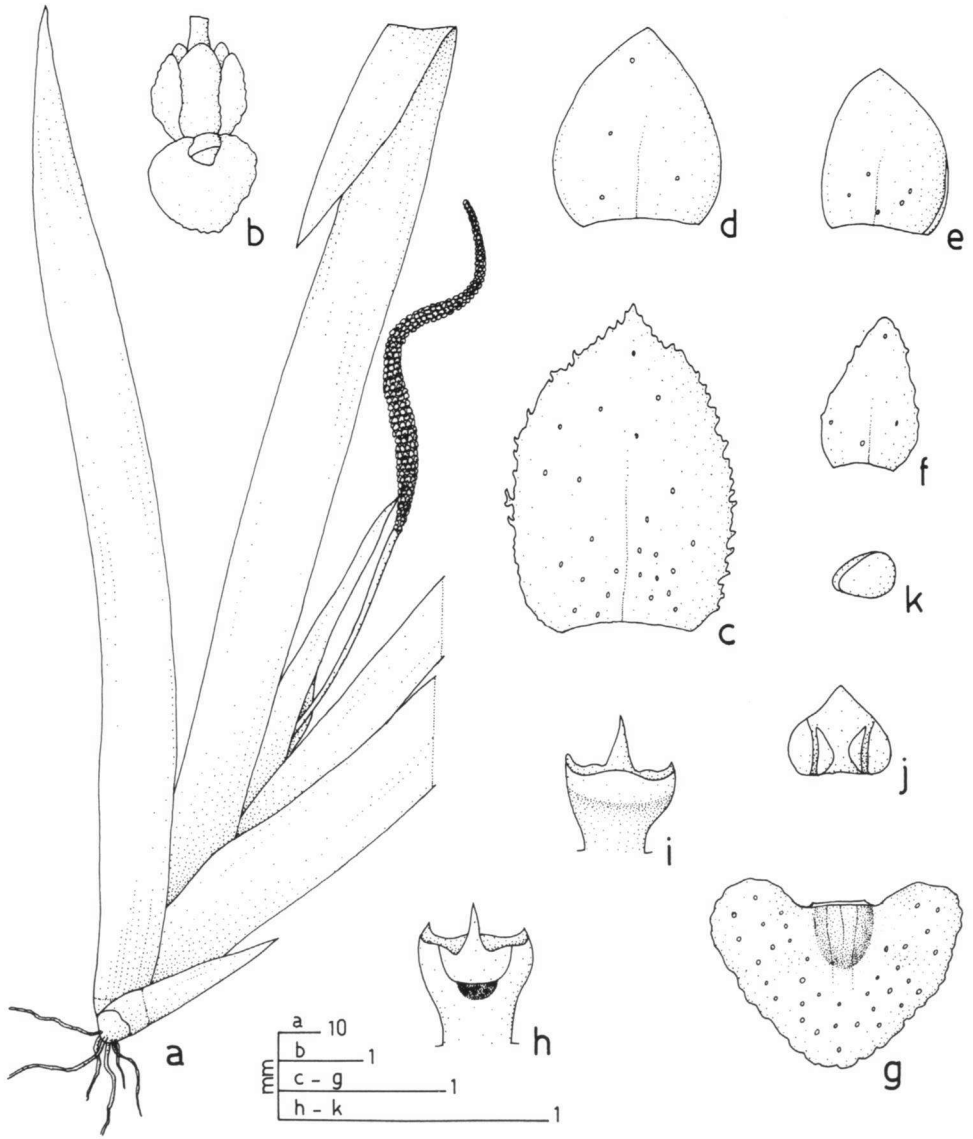


Fig. 16. *Oberonia maxima* Hooker f.

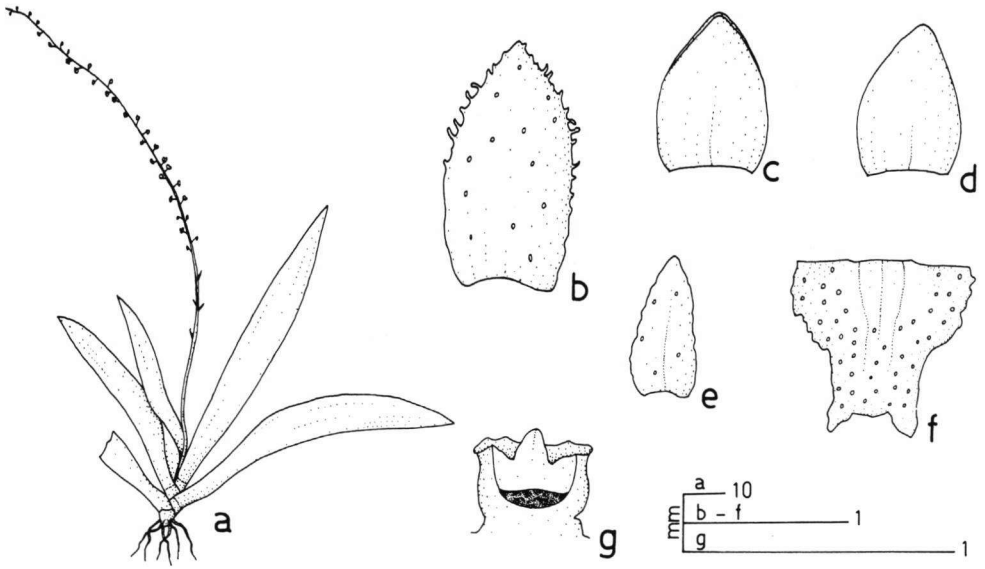


Fig. 17. *Oberonia lobulata* King & Pantling

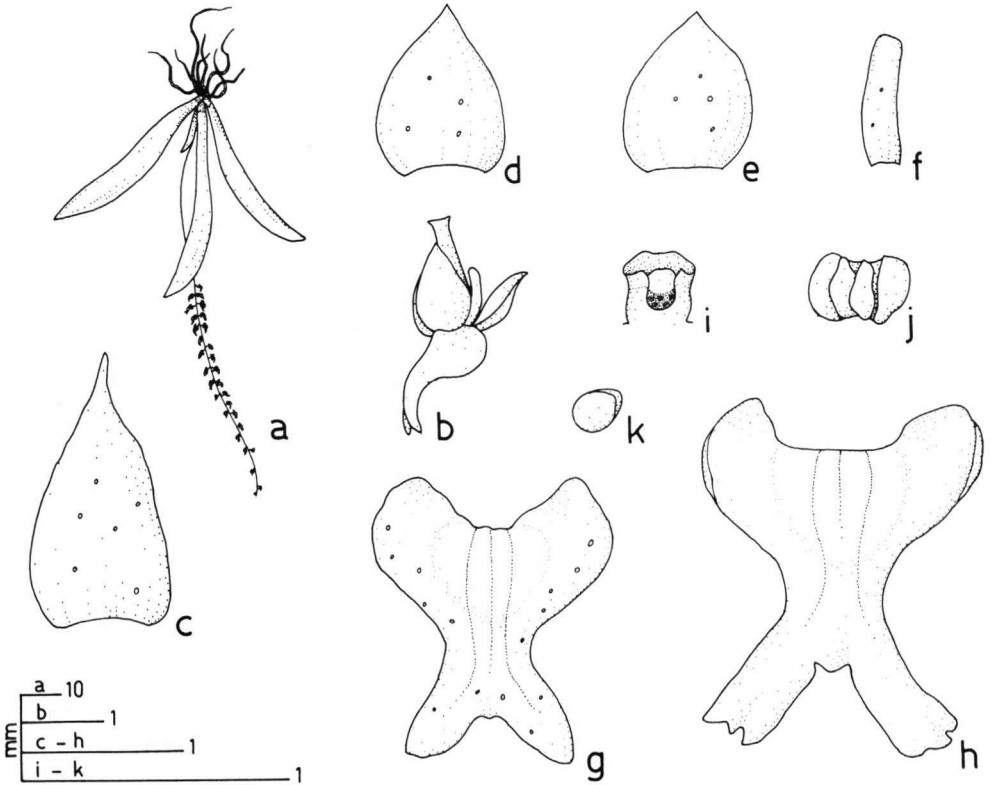


Fig. 18. *Oberonia arnottiana* Wight

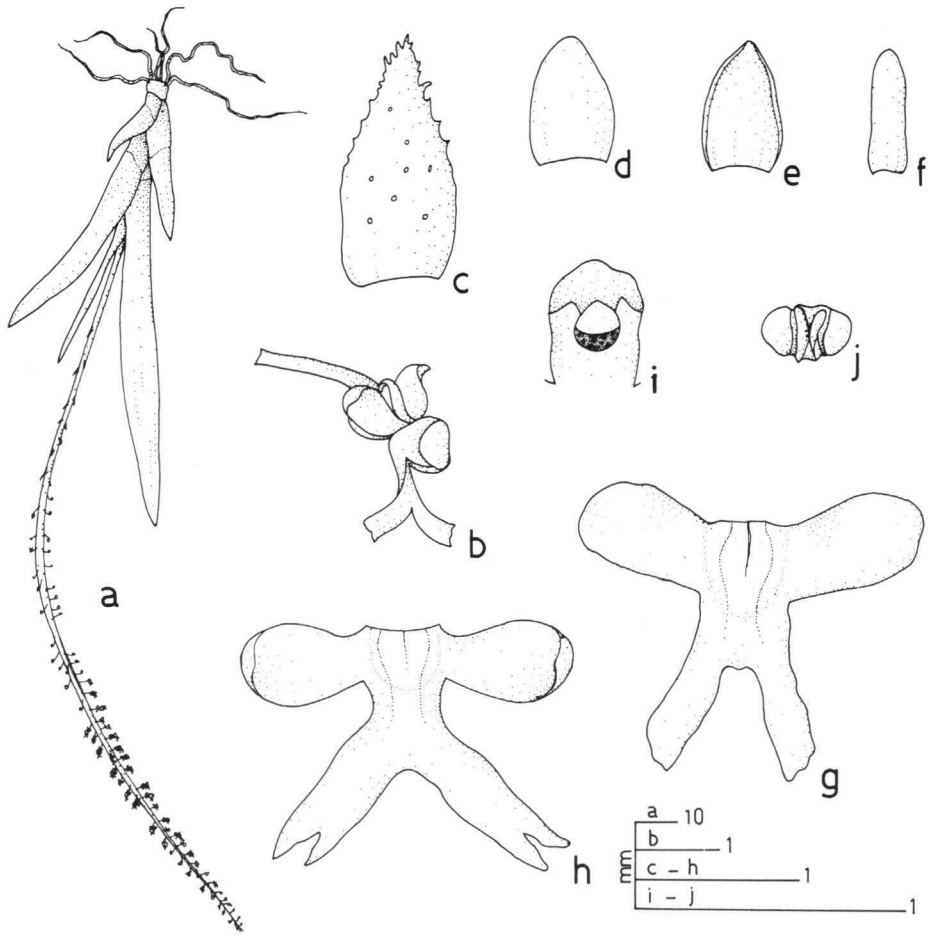


Fig. 19. *Oberonia wightiana* Lindley

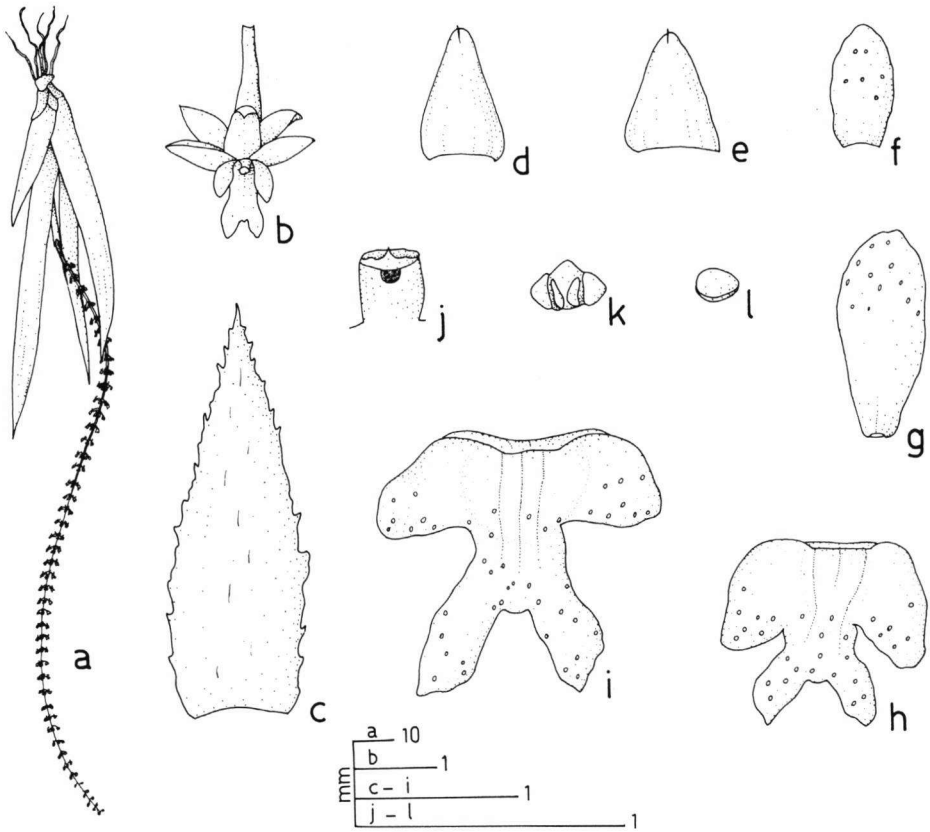


Fig. 20. *Oberonia myriantha* Lindley

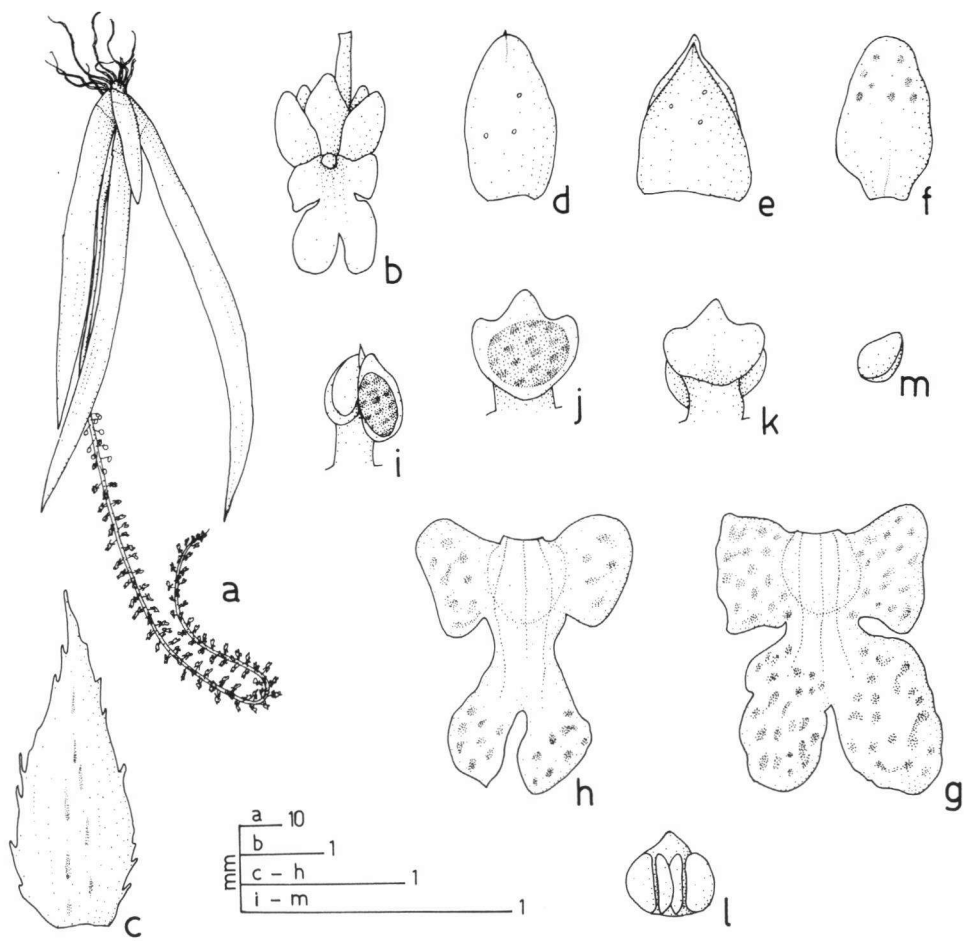


Fig. 21. *Oberonia acaulis* Griff.

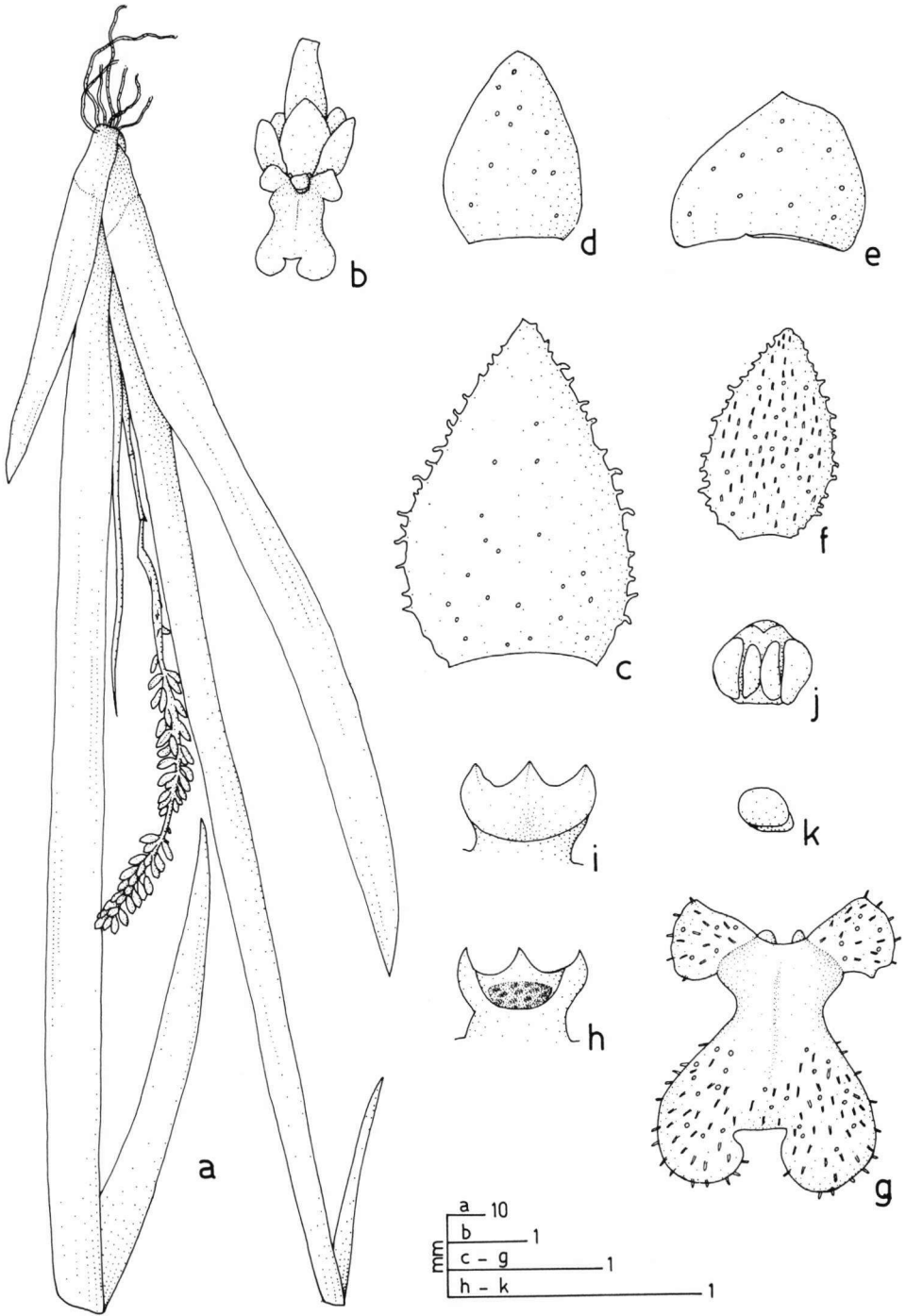


Fig. 22. *Oberonia ensiformis* (Smith) Lindley



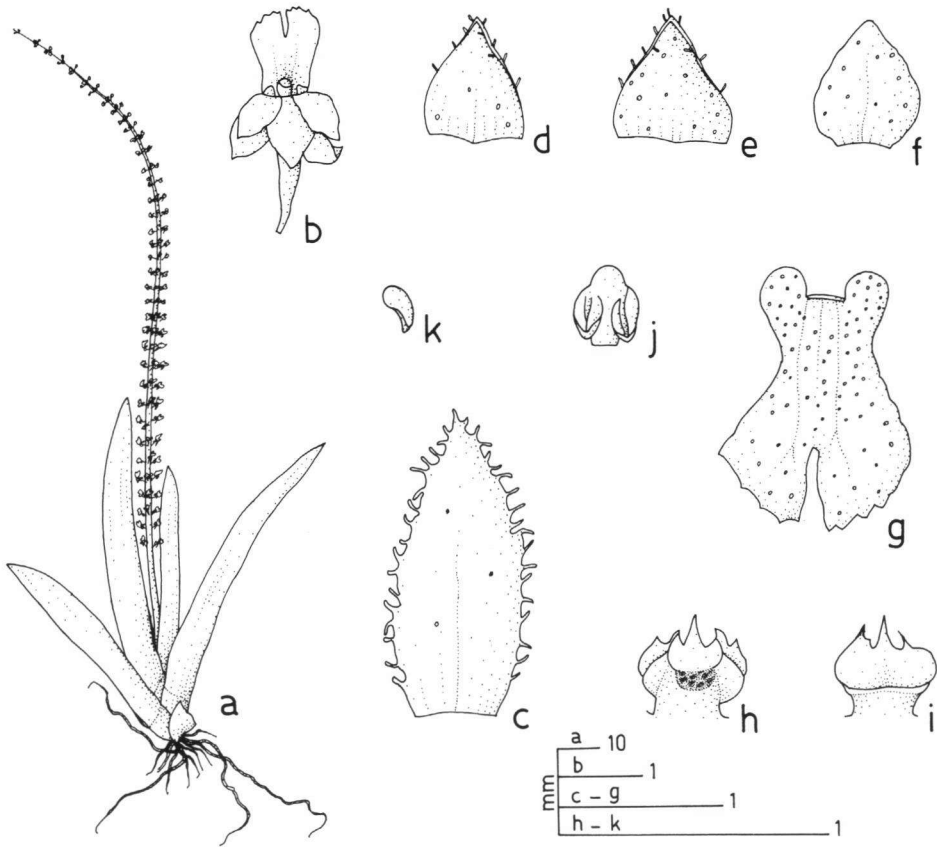


Fig. 23. *Oberonia thwaitesii* Hooker f.

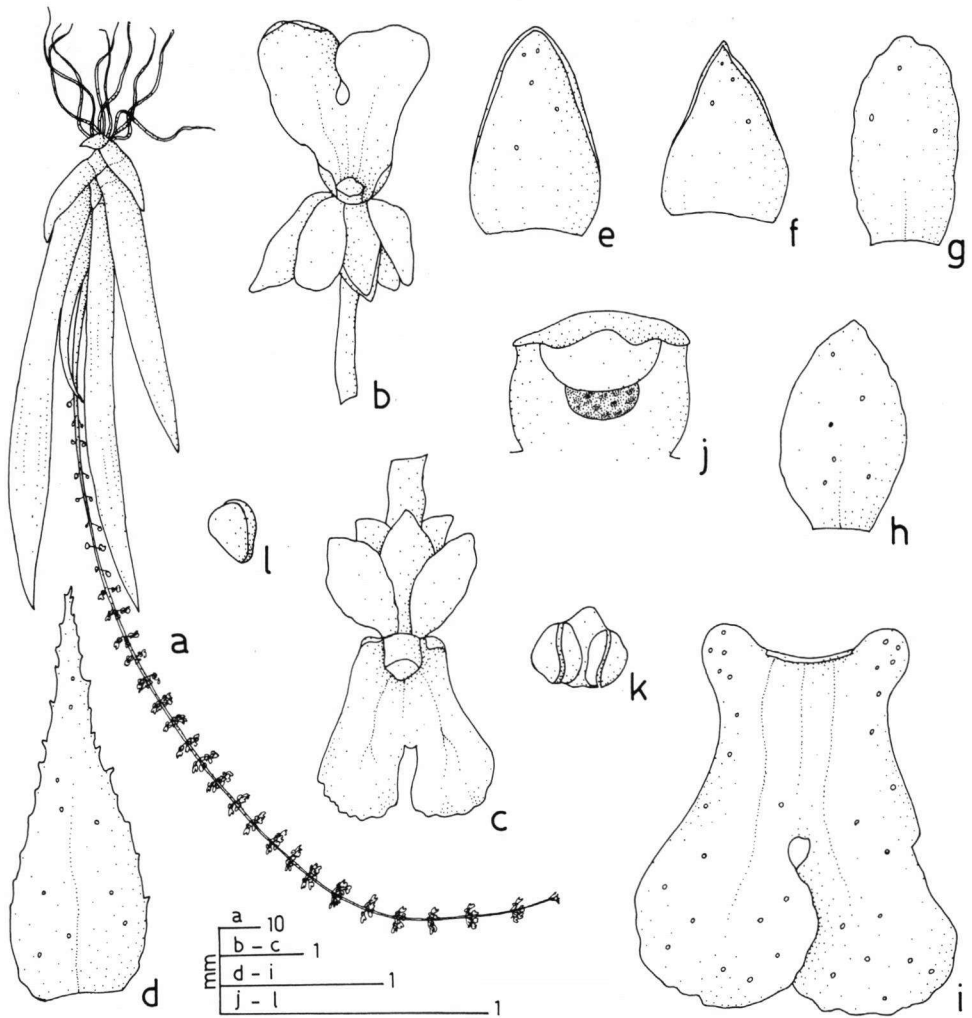


Fig. 24. *Oberonia verticillata* Wight

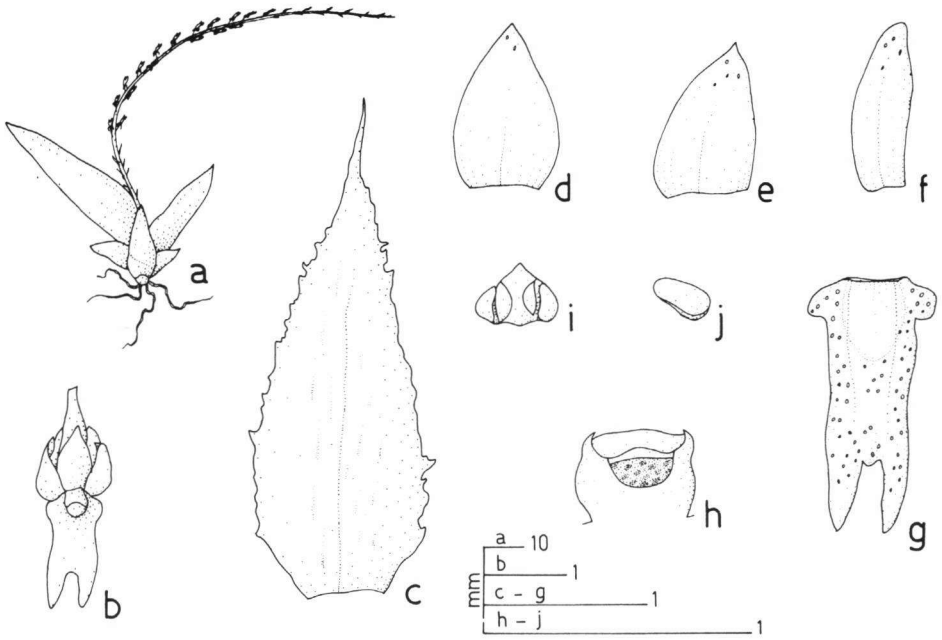


Fig. 25. *Oberonia falconeri* Hooker f.

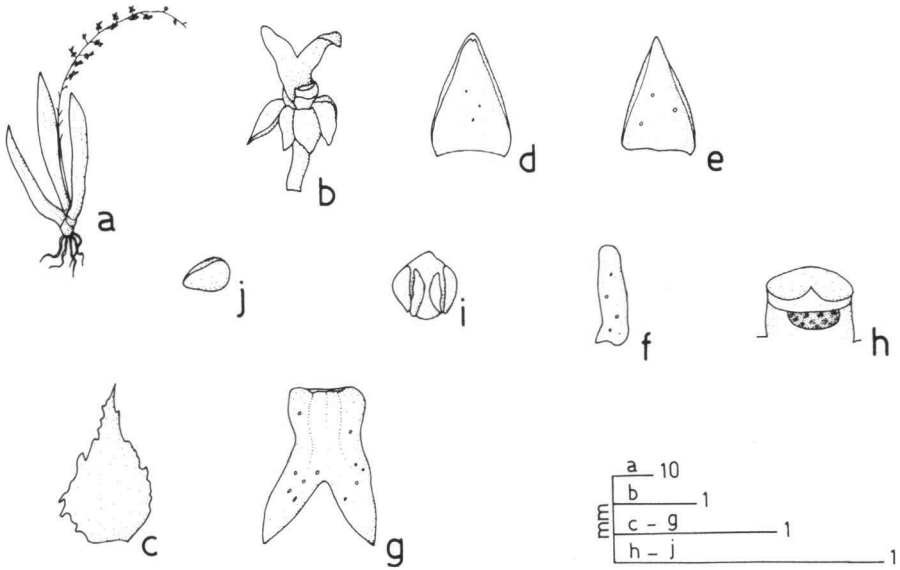


Fig. 26. *Oberonia pyrulifera* Lindley

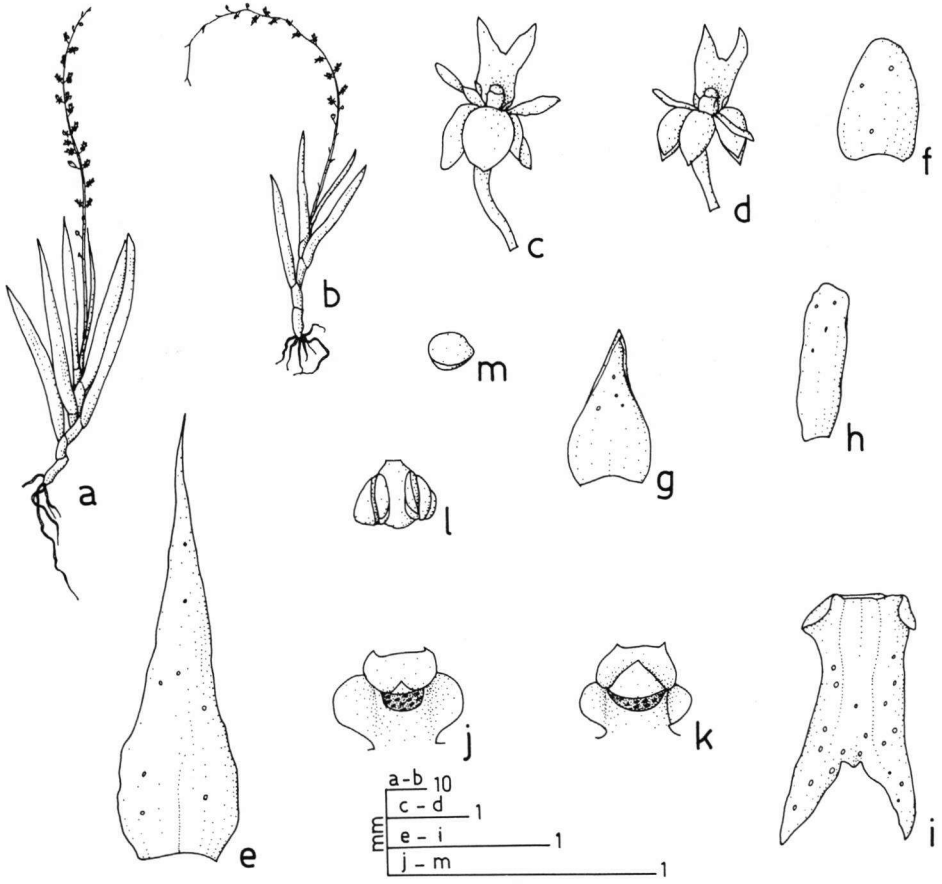


Fig. 27. *Oberonia caulescens* Wall. ex Lindley

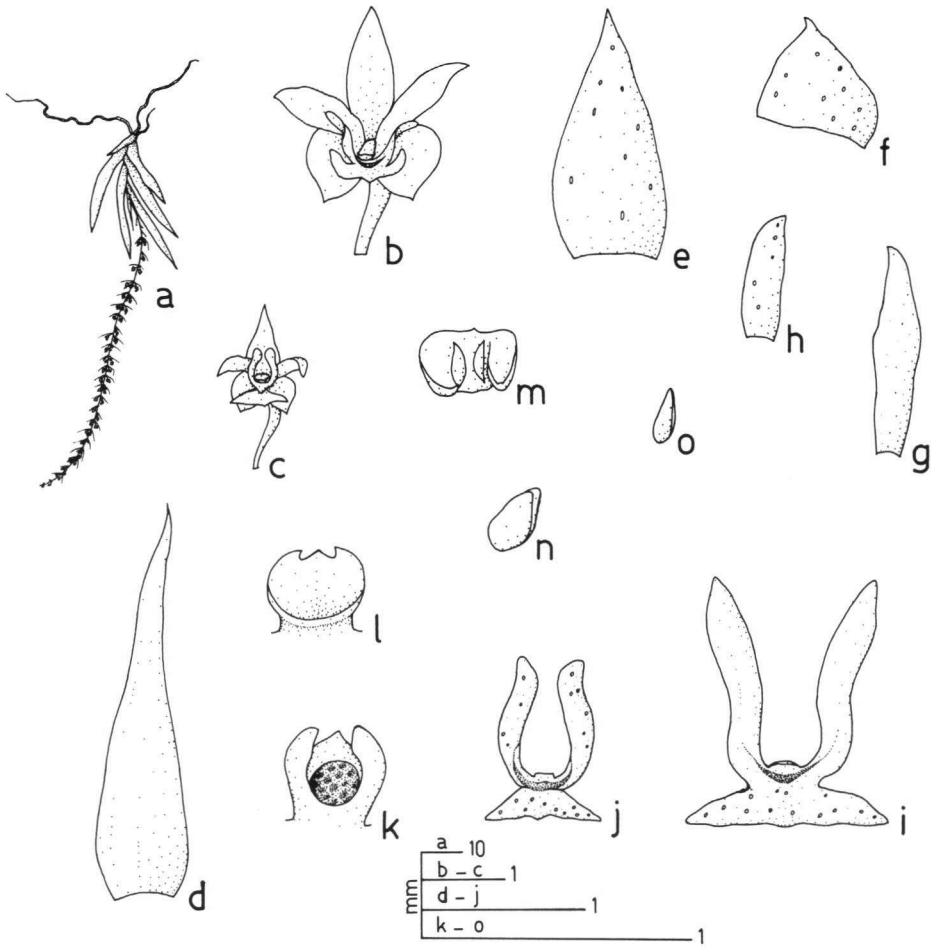


Fig. 28. *Oberonia bicornis* Lindley

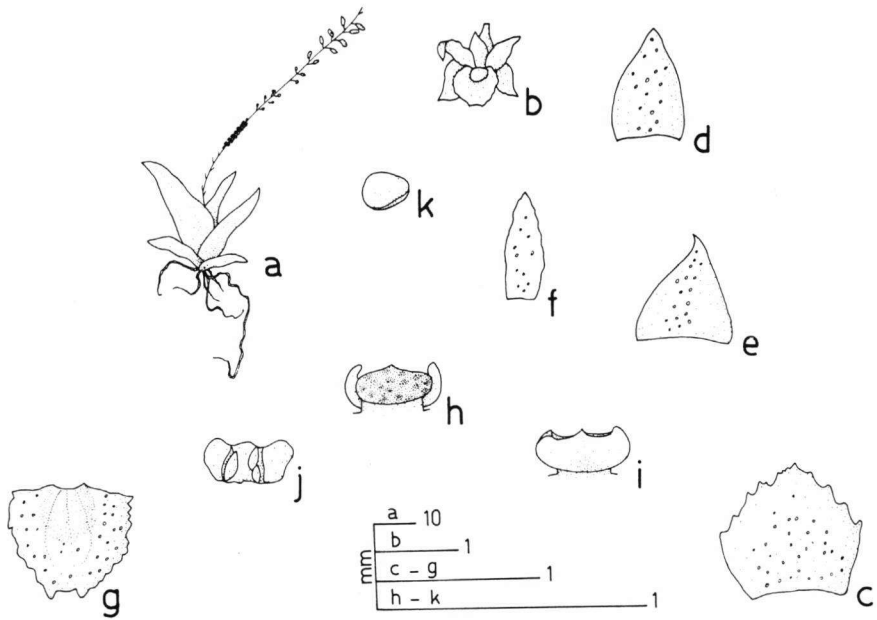


Fig. 29. *Oberonia proudlockii* King & Pantling

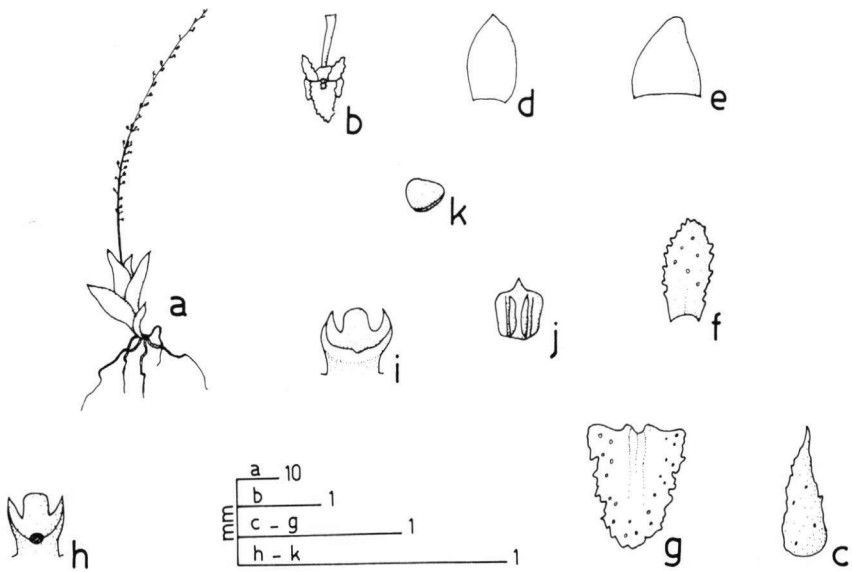


Fig. 30. *Oberonia prainiana* King & Pantling

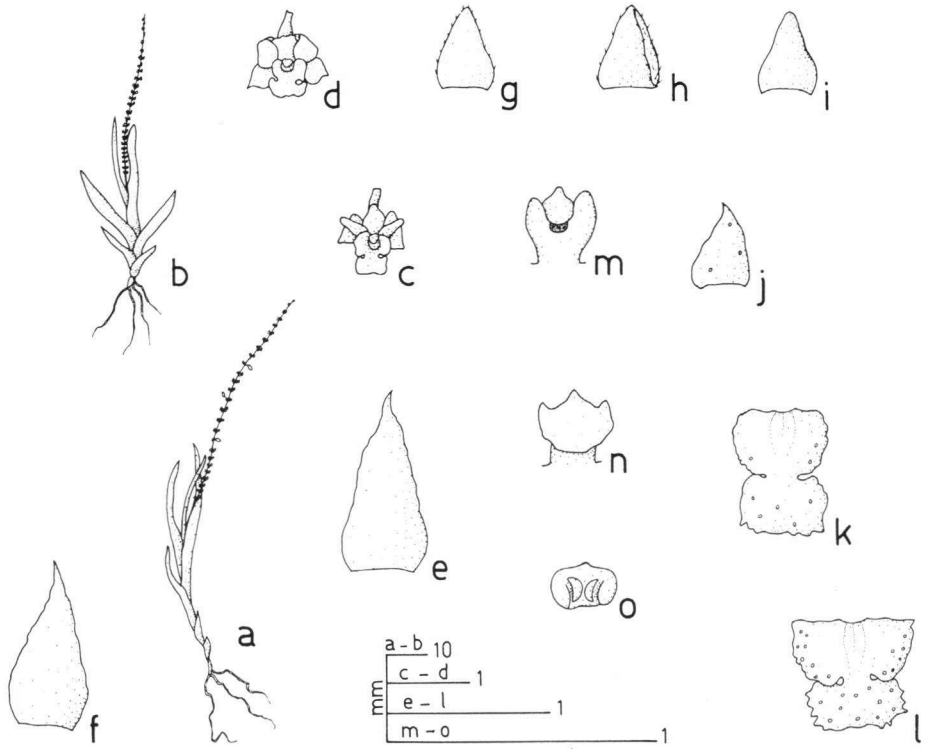


Fig. 31. *Oberonia emarginata* King & Pantling

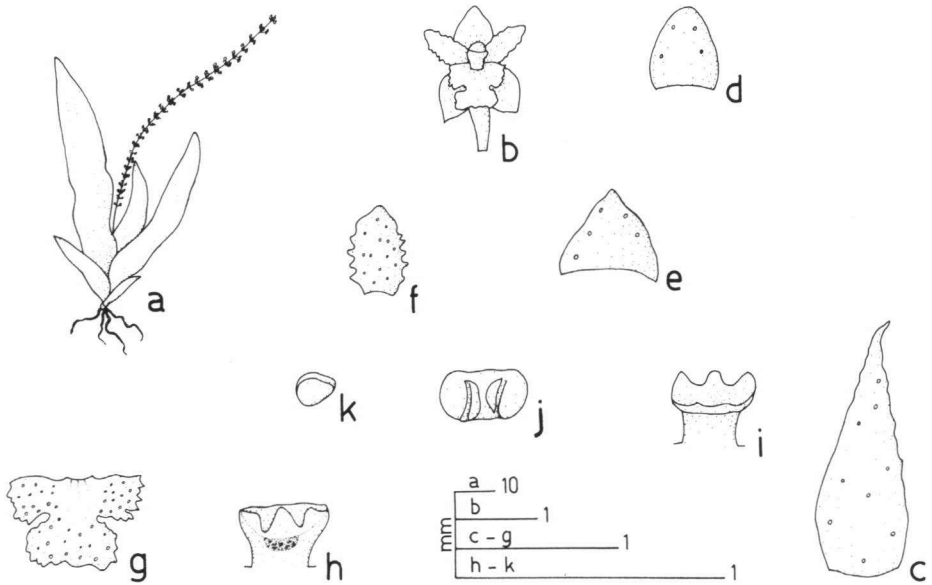


Fig. 32. *Oberonia brachystachys* Lindley

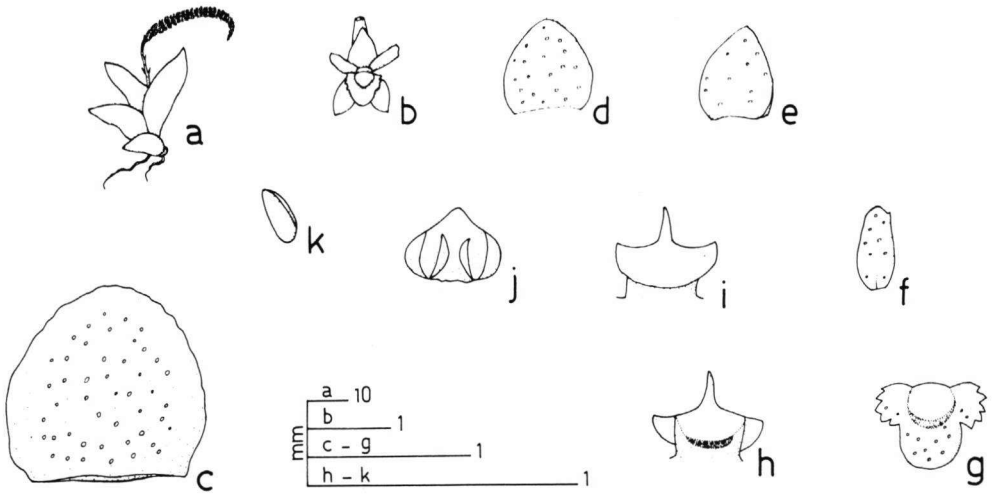


Fig. 33. *Oberonia pachyphylla* King & Pantling

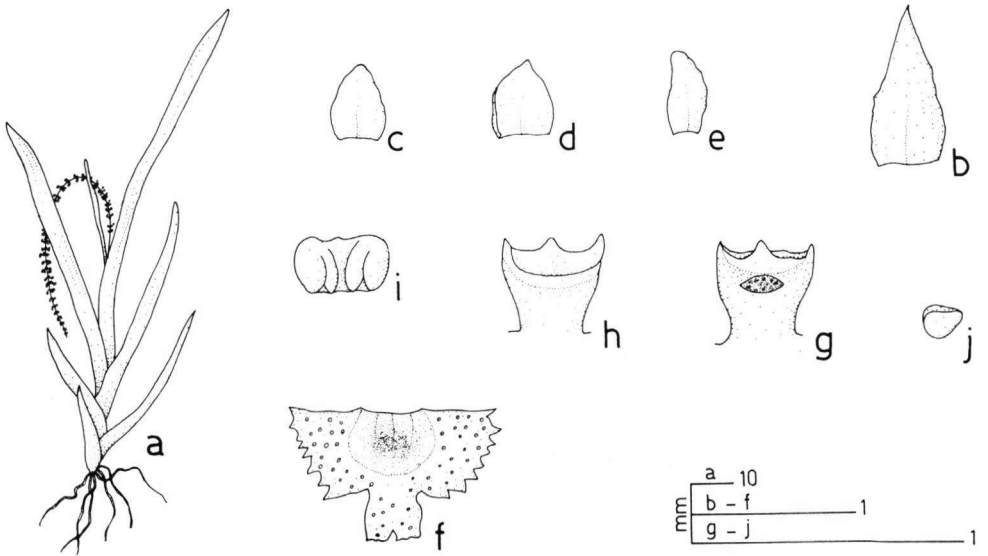


Fig. 34. *Oberonia jenkinsidna* Griff. ex Lindley



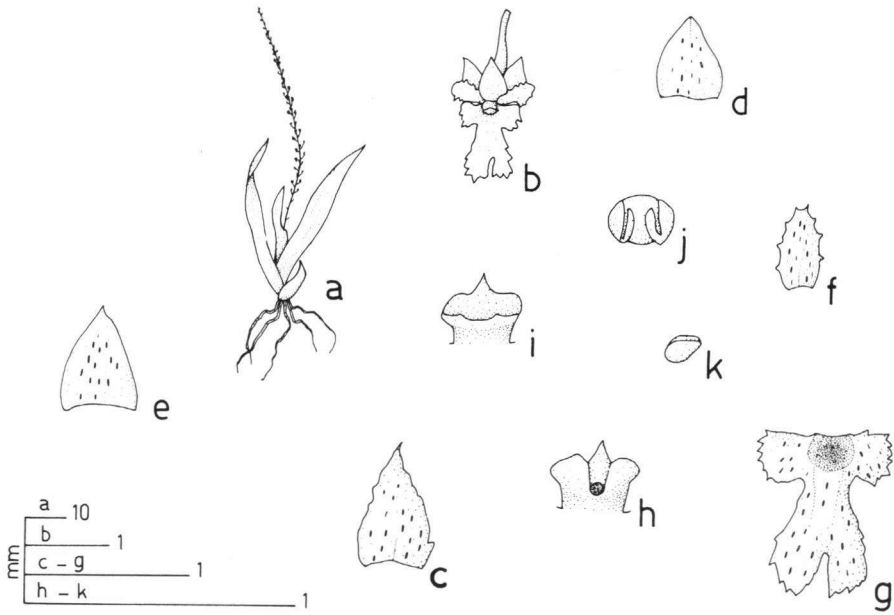


Fig. 35. *Oberonia brachyphylla* Blatt. & McCann

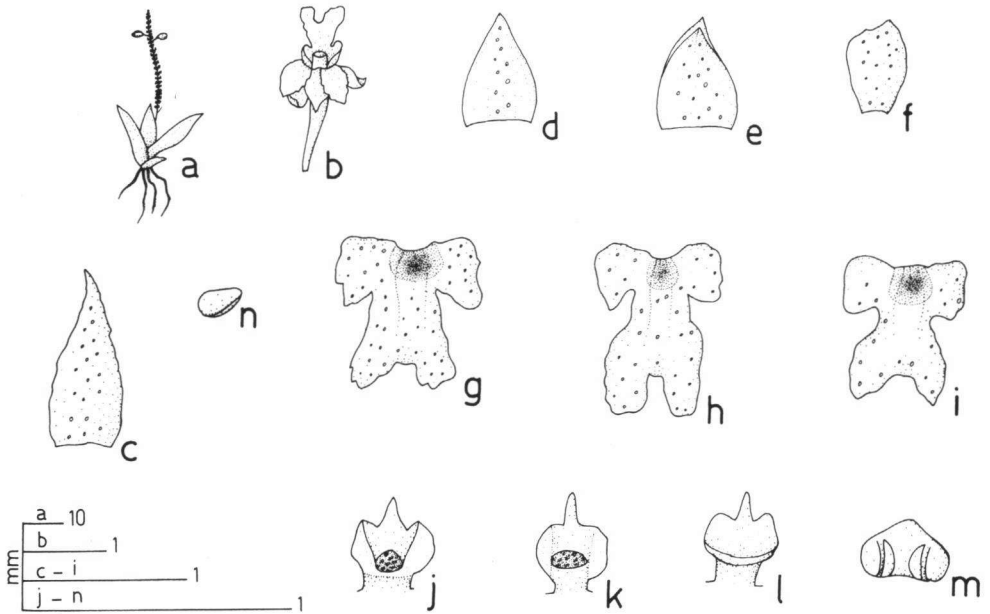


Fig. 36. *Oberonia recurva* Lindley

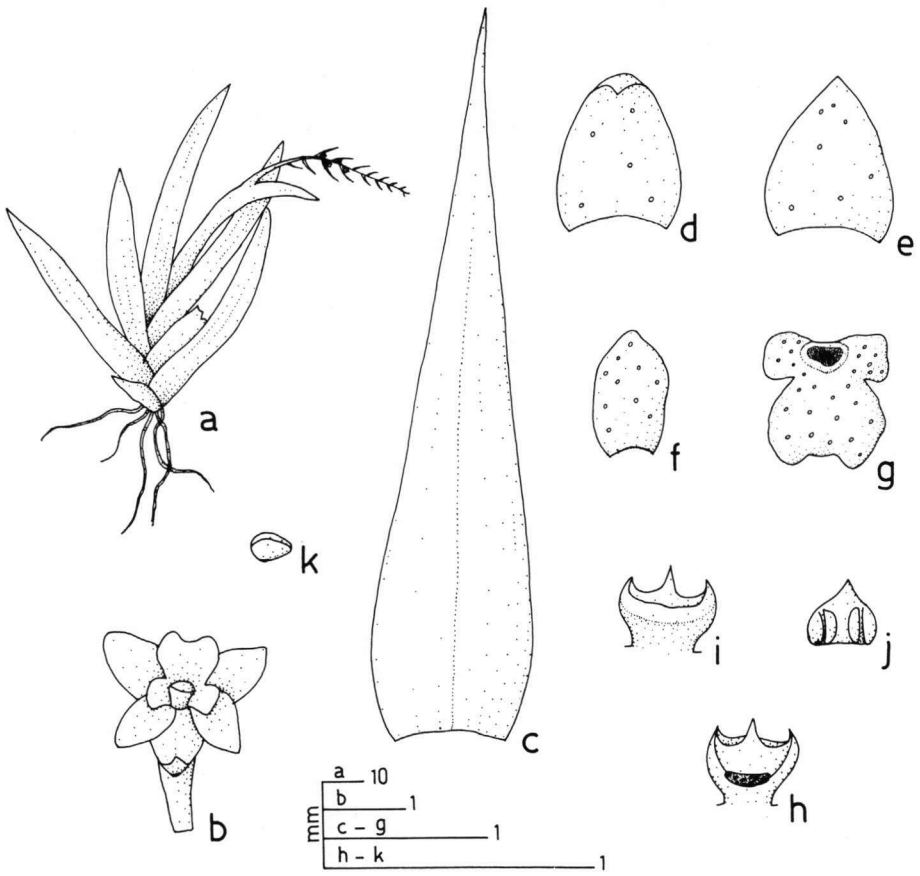


Fig. 37. *Oberonia longibracteata* Lindley

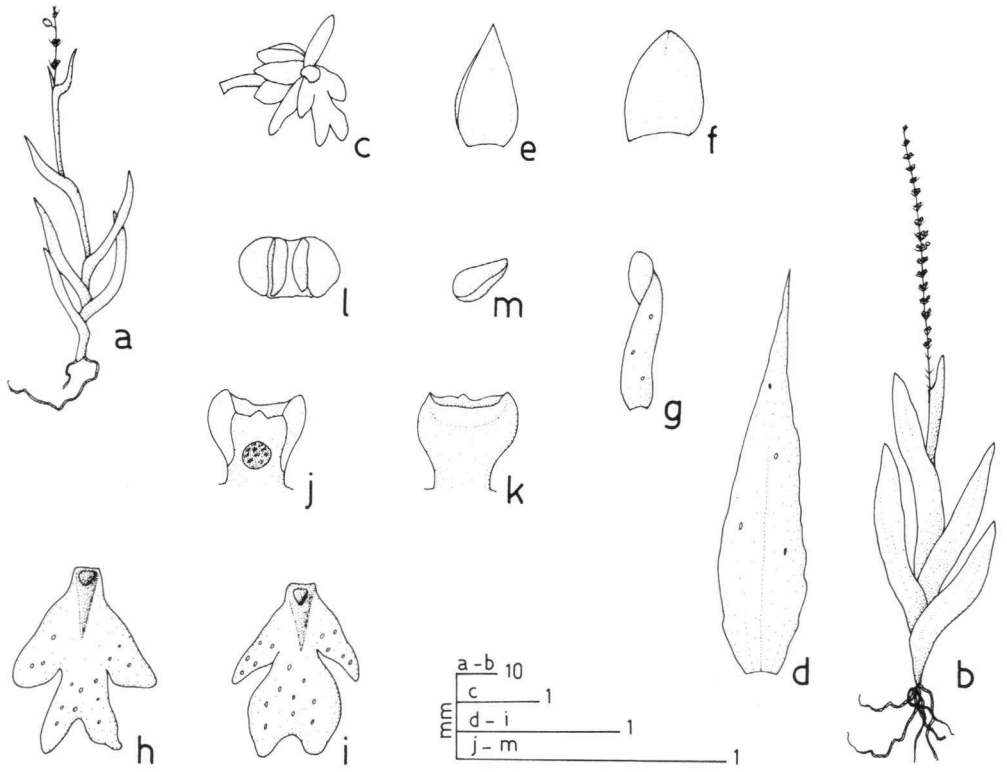


Fig. 38. *Oberonia obcordata* Lindley

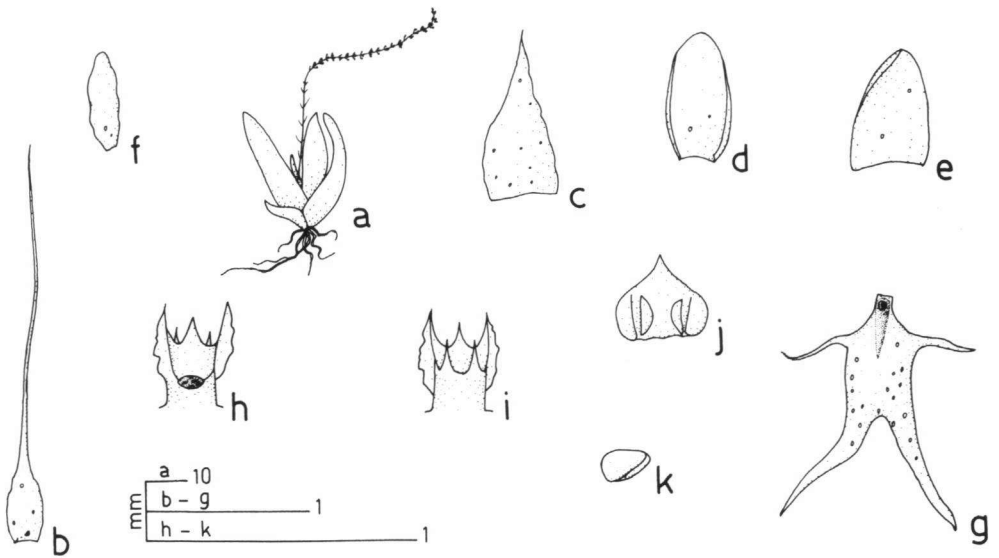


Fig. 39. *Oberonia rufilabris* Lindley

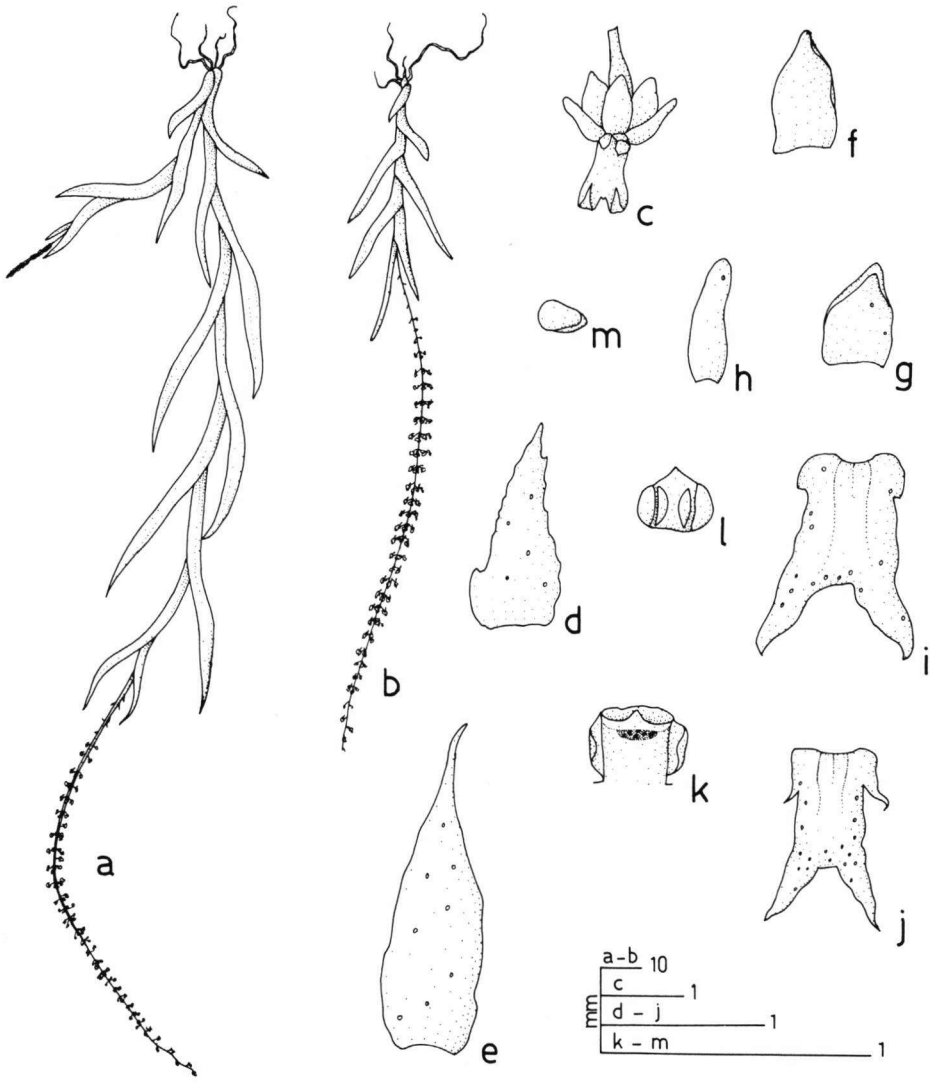


Fig. 40. *Oberonia falcata* King & Pantling

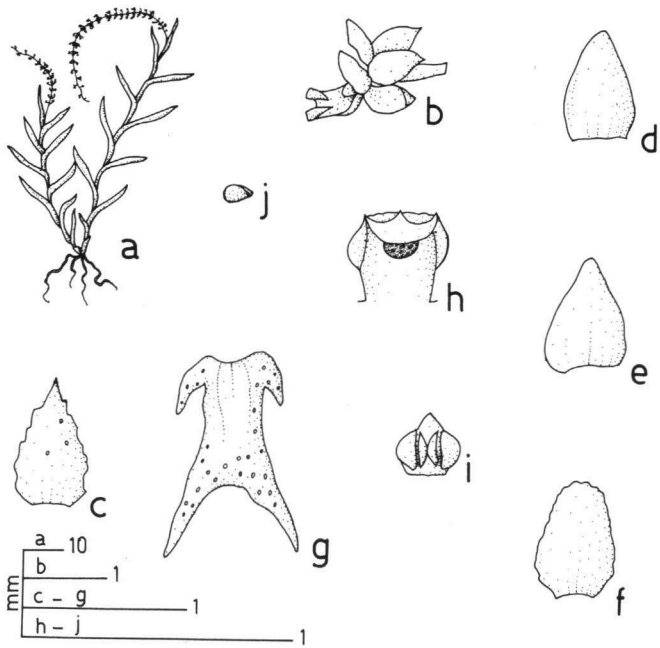


Fig. 41. *Oberonia mannii* Hooker f.

## INDEX

In this index, species and varieties of *Oberonia* mentioned in the Systematic treatment are listed. Species mentioned incidentally in the Introduction, Classification, etc. are not indexed. Accepted names are in roman type; synonyms and misapplied names are in *italics*. The number in bold type corresponds to the species number given in the Systematic treatment under which the name is included; it refers also to the number of the line drawing. The number in roman type is used for incidental citation of the name.

- acaulis* Griff. 20, 21  
*anamalayana* Joseph 9, 13  
*angustifolia* Lindley 42  
*anthropophora* Lindley 43  
*arnottiana* Wight 18  
*auriculata* King & Pantling 27  
*balakrishnanii* Ansari 10  
*bellii* Blatt. & McCann 24  
*bicornis* Lindley 28  
*bisaccata* Manilal & Kumar 6  
*brachyphylla* Blatt. & McCann 15, 35  
*brachystachys* Lindley 32, Plate 1a  
*brunoniana* Wight 5, 6, 8, 9, Plate 1b, 1c  
*caulescens* Wall. ex Lindley 27, 40  
*chandrasekharanii* Nair et al. 5  
*clarkei* Hooker f. 44  
*croftiana* King & Pantling 36  
*demissa* Lindley 32  
*denticulata* Wight 15, Plate 1d  
*emarginata* King & Pantling 31, Plate 2a  
*ensifformis* (Smith) Lindley 22, Plate 2b  
*falcata* King & Pantling 40  
*falconeri* Hooker f. 25, Plate 2c  
*ferruginea* Parish 22  
*forcipata* Lindley 11  
*gammiei* King & Pantling 15  
*griffithiana* Lindley 45, Plate 2d  
*iridifolia* Lindley 15  
     var. *angustifolia* Hooker f. 15  
     var. *brevifolia* Hooker f. 15  
     var. *denticulata* Hooker f. 15  
*jenkinsiana* Griff. ex Lindley 34, 44  
*josephii* Saldanha 8, 9, 10  
*langbianensis* Gagnep. 2  
*lindleyana* Wight 9, 12  
*lingmalensis* Blatt. & McCann 36  
*lobulata* King & Pantling 15, 17  
*longibracteata* Lindley 37, 42  
*longilabris* King & Pantling 27  
*mannii* Hooker f. 27, 41  
*maxima* Hooker f. 16, Plate 3a  
*micrantha* King & Pantling 31  
*myosurus* Lindley 1  
*myriantha* Lindley 20, Plate 3b  
*nayarii* Ansari & Balak. 11  
*obcordata* Lindley 38, Plate 3c  
*orbicularis* Hooker f. 46  
*pachyphylla* King & Pantling 33  
*pachyrachis* Rchb. f. ex Hooker f. 3, 46  
*parvula* King & Pantling 36  
*platycaulon* Wight 6, 9  
*prainiana* King & Pantling 30  
*proudlockii* King & Pantling 29  
*pyrulifera* Lindley 26  
*rangannaiana* Murthy et al. 5  
*rasmussenii* Seidenf. 34  
*recurva* Lindley 19, 36  
     var. *lingmalensis* (Blatt. & McCann)  
         Santapau & Kapadia 36  
*ritaii* King & Pantling 20  
*rosea* Hooker f. 2  
*rufilabris* Lindley 39, Plate 3d  
*santapau* Kapadia 9, 11, 12  
*sebastiana* Shetty & Vivek. 4, 6  
*sedgwickii* Blatt. & McCann 29  
*seidenfadeniana* Joseph & Vajravelu 6, 7, 9  
*setifera* Lindley 36  
*sikkimensis* Lindley 20  
*spiralis* Blatt. & McCann 24  
*sulcata* Joseph & Chowdhury 2  
*tenuis* auct. non Lindley: Santapau & Kapadia 28  
*thwaitesii* Hooker f. 23, 24  
*treuleri* Hooker f. 38  
*umbonata* Blatt. & McCann 28  
*verticillata* Wight 24  
     var. *gigantea* Lindley 24  
     var. *khasiana* Lindley 24, 26  
     var. *longibracteata* Blatt. & McCann 24  
     var. *pubescens* Lindley 23, 24  
*wightiana* Lindley 18, 19  
     var. *arnottiana* (Wight) Ansari et al. 18, 19  
     var. *nilgirensis* Ansari et al. 18, 19  
     var. *wightiana* 18  
*zeylanica* Hooker f. 9, 14

LEGENDS OF THE PLATES  
(The species number between brackets)

**Plate 1**

- a. *Oberonia brachystachys* Lindley (32)  
Seidenfaden & Smitinand GT 7423 from N. Thailand. Photograph G. Kjellsson (copy in collection Rijksherbarium Leiden)
- b. *Oberonia brunonia* Wight (9)  
Ansari & Balakrishnan s.n., from India. Photograph R. Ansari & N.P. Balakrishnan (copy in collection Rijksherbarium Leiden)
- c. *Oberonia brunonia* Wight (9)  
Ansari & Balakrishnan s.n., from India. Photograph R. Ansari & N.P. Balakrishnan (copy in collection Rijksherbarium Leiden)
- d. *Oberonia denticulata* Wight (15)  
Seidenfaden & Smitinand GT 9431 from Peninsular Thailand. Photograph G. Kjellsson (copy in collection Rijksherbarium Leiden)

**Plate 2**

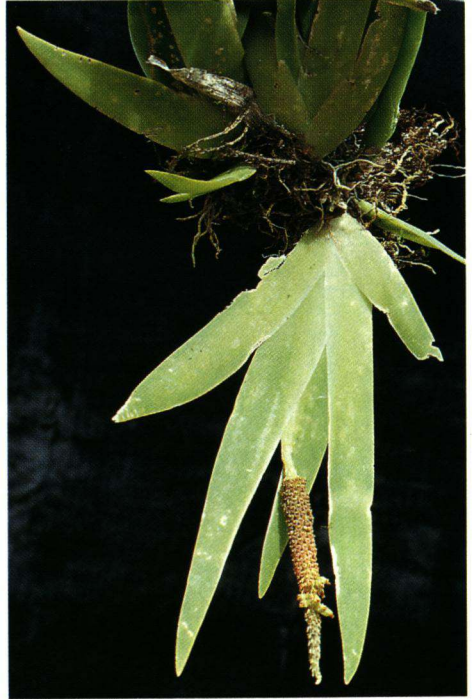
- a. *Oberonia emarginata* King & Pantling (31)  
Seidenfaden & Smitinand GT 8833 from Central Thailand. Photograph G. Kjellsson (copy in collection Rijksherbarium Leiden)
- b. *Oberonia ensiformis* (Smith) Lindley (22)  
Seidenfaden & Smitinand GT 7684 from N. Thailand. Photograph G. Kjellsson (copy in collection Rijksherbarium Leiden)
- c. *Oberonia falconeri* Hooker f. (25)  
Seidenfaden & Smitinand GT 6437 from Peninsular Thailand. Photograph G. Kjellsson (copy in collection Rijksherbarium Leiden)
- d. *Oberonia griffithiana* Lindley (45)  
Seidenfaden & Smitinand GT 9465 from Peninsular Thailand. Photograph G. Kjellsson (copy in collection Rijksherbarium Leiden)

**Plate 3**

- a. *Oberonia maxima* Hooker f. (16)  
A.D. Kerr 3222 from Dalat, Vietnam. Photograph G. Kjellsson (copy in collection Rijksherbarium Leiden)
- b. *Oberonia myriantha* Lindley (20)  
Seidenfaden & Smitinand GT 9148 from N. Thailand. Photograph G. Kjellsson (copy in collection Rijksherbarium Leiden)
- c. *Oberonia obcordata* Lindley (38)  
Seidenfaden & Smitinand GT 5142 from N. Thailand. Photograph G. Kjellsson (copy in collection Rijksherbarium Leiden)
- d. *Oberonia rufilabris* Lindley (39)  
Seidenfaden & Smitinand GT 6153 from Peninsular Thailand. Photograph G. Kjellsson (copy in collection Rijksherbarium Leiden)



a. *Oberonia brachystachys* Lindley (32)



b. *Oberonia brunonia* Wight (9)



c. *Oberonia brunonia* Wight (9)



d. *Oberonia denticulata* Wight (15)

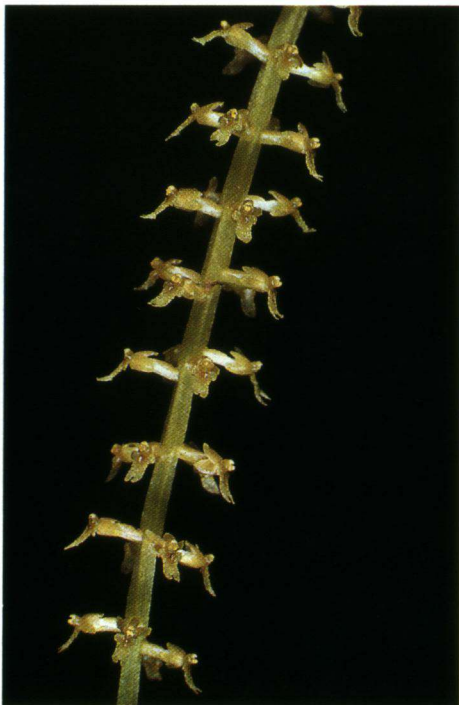




a. *Oberonia emarginata* King & Pantling (31)



b. *Oberonia ensiformis* (Smith) Linley (22)



c. *Oberonia falconeri* Hooker f. (25)



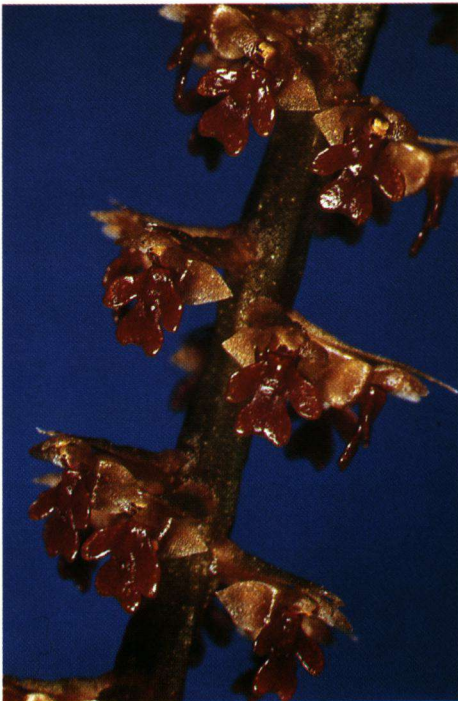
d. *Oberonia griffithiana* Lindley (45)



**a.** *Oberonia maxima* Hooker f. (16)



**b.** *Oberonia myriantha* Lindley (20)



**c.** *Oberonia obcordata* Lindley (38)



**d.** *Oberonia rufilabris* Lindley (39)