

VERSLAGEN EN TECHNISCHE GEGEVENS
Instituut voor Taxonomische Zoölogie (Zoölogisch Museum)
Universiteit van Amsterdam

No. 33

A CATALOGUE OF THE TYPE-SPECIMENS OF RECENT FISHES IN THE
INSTITUTE OF TAXONOMIC ZOOLOGY (ZOÖLOGISCH MUSEUM),
UNIVERSITY OF AMSTERDAM, THE NETHERLANDS

H. Nijssen, L. van Tuijl & I. J. H. Isbrücker

maart 1982

A CATALOGUE OF THE TYPE-SPECIMENS OF RECENT FISHES IN THE
 INSTITUTE OF TAXONOMIC ZOOLOGY (ZOÖLOGISCH MUSEUM),
 UNIVERSITY OF AMSTERDAM, THE NETHERLANDS

H. Nijssen, L. van Tuijl & I. J. H. Isbrücker

CONTENTS

Introduction	3
Lamniformes	7
Torpediformes	7
Rajiformes	7
Anguilliformes	7
Anguilloidei	7
Clupeiformes	10
Clupeoidei	10
Salmoniformes	11
Galaxioidei	11
Stomiatoidei	12
Alepocephaloidei	12
Myctophoidei	12
Cypriniformes	13
Characoidei	13
Gymnotoidei	25
Cyprinoidei	26
Siluriformes	37
Gobiesociformes	63
Lophiiformes	64
Lophioidei	64
Antennarioidei	64
Ceratioidei	65
Gadiformes	65
Gadoidei	65
Ophidioidei	65
Macrouroidei	65

Atheriniformes	67
Exocoetoidei	67
Cyprinodontoidei	69
Atherinoidei	72
Beryciformes	78
Stephanoberycoidei	78
Berycoidei	78
Zeiformes	79
Gasterosteiformes	79
Aulostomoidei	79
Syngnathoidei	79
Scorpaeniformes	81
Scorpaenoidei	81
Platycephaloidei	83
Perciformes	83
Percoidei	83
Mugiloidei	91
Polynemoidei	91
Labroidei	91
Trachinoidei	92
Blennioidei	93
Callionymoidei	95
Gobioidei	96
Acanthuroidei	105
Scombroidei	105
Anabantoidei	105
Mastacembeloidei	105
Pleuronectiformes	106
Pleuronectoidei	106
Soleoidei	107
Tetraodontiformes	109
Balistoidei	109
Tetraodontoidei	110
References	111
Index	147

INTRODUCTION

This catalogue resulted from our attempts (since 1963) to accommodate and modernize the labelling of type-material of Recent fishes in the collections of the Zoölogisch Museum Amsterdam (ZMA), now named Institute of Taxonomic Zoology, University of Amsterdam.

We traced 6625 type-specimens of 714 nominal species or subspecies, 228 of which are primary type-specimens (holotype, lectotype, or neotype); moreover, the collection contains one or more syntypes of 222 nominal (sub-) species. A few syntypes are presently indicated as future lectotype in the collection, awaiting publication by various specialists. Such specimens are not distinguished in this catalogue. It is possible that lectotype designations for some species have been validly published, which have escaped our attention. Certain records in the literature of single syntypes as "the holotype" cannot be considered designation of the lectotype. For example, Menon's (1977: 88-89) "holotype" of Cynoglossus heterolepis is still one of the syntypes (now in the British Museum (Natural History) London).

Herein we publish the lectotype designation for Sphoeroides meraukensis. This specimen was selected by its original describer, the late Prof. Dr L. F. de Beaufort, while visiting the institute in 1964.

We were unable to trace some syntypes, indicated as such in the old card-index system. None of these are included in the catalogue, except for the entire syntype-series (nine specimens) of Foa fistulosa. Two holotypes (of Nannostomus bifasciatus, and of Syngnathus corrugatus [the latter was catalogued by

Hoedeman as ZMA 100.337]) could not be traced; a third holotype (of Symphurus fallax) was not returned by the late Dr P. Chabanaud, who examined the specimen in Paris.

In this catalogue, the originally proposed combination of genus- and (sub-) species names are maintained, without indication of subsequent generic re-allocation or change in status. Original descriptions of all type-specimens were reviewed, whereas reference is added to publications which include designation of lectotypes and neotypes. Type-localities are indicated broadly in the present catalogue, by naming the country or rather wide area of origin only.

The orders and suborders of Teleostei are herein arranged according to P. H. Greenwood, D. E. Rosen, S. H. Weitzman & G. S. Myers's (1966) "Phyletic studies of Teleostean fishes, with a provisional classification of Living forms", in: Bull. Amer. Mus. nat. Hist., 131 (4): 339-455, pls. 21-23. Within orders and suborders the genera and species are arranged alphabetically.

In the ZMA collection of Recent fishes (comprising among others 30 000 jars) were various causes of disorder in the past:

- (1) the curatorial administration was incomplete during the time of M. [C. W.] Weber (1883-1937) and L. F. de Beaufort (1903-1949), resulting in a rather inconsistent way of labelling type-specimens;
- (2) holotypes often were labelled with the indication "type", just like single syntypes from a given locality; syntypes and paratypes were called "types";
- (3) unpublished manuscript names on labels bearing a

- type-indication were encountered in the collection;
- (4) administration of the exchange of type-specimens between ZMA and Museums in Vienna (1915), Leiden (1917 and following), Manilla (19..?), New York (1927), London (19..?), and others, usually was inaccurate;
- (5) In Weber & de Beaufort's "The fishes of the Indo-Australian Archipelago" and in many other publications, new species were often described without accurate records of the number of specimens involved;
- (6) confusion caused by J. J. Hoedeman (1950-1962) — by erroneously labelling all Bleeker specimens as types; the ZMA-specimens from the Bleeker collection are from series B and D of the auction in 1879 (Hubrecht's Auction catalogue indicated that these series do not contain type-material) [see: A. A. W. Hubrecht, 1879. Catalogue des collections formées et laissées par M.- P. Bleeker, ...etc., : i-iv, 1-71 (De Breuk & Smits, Leiden), and: L. F. de Beaufort, 1964. Bleeker's collection in the Zoological Museum of Amsterdam.- Beaufortia, 11 (131): 23-25];
- by starting a register number system (ZMA 100.001 through 103.500), which was incomplete and inconsistent;
- by publishing the first (and only) of "A list of type specimens of fishes in the Zoological Museum, University of Amsterdam" (1960). It turned out to be incomplete and sometimes even misleading: as "holotype" and "paratypes" of Melanotaenia multisquamata, Hoedeman choose a (now paralectotype-) series of Rhom-batractus vanheurni from Doorman River (ZMA 103.166), of which he sent specimens to Sidney, Stanford, and Leiden;
- (7) Matthes's (1964) list of types of African fresh water fishes is incomplete.

This catalogue aims at completeness. Type-material of species described up to and including the year 1981 is included. Data not mentioned in original descriptions were obtained from labels (sometimes with record of scale- and fin-ray counts corresponding with the data in the original description) in the jars, and from the old card-index system, including more detailed collecting data and the original number of specimens.

LAMNIFORMES

Scyliorhinus sibogae Weber, 1913: 595-596.

Indonesia

ZMA 111.076, holotype

TORPEDINIFORMES

Narcine brunnea Annandale, 1909: 45-46.

Bay of Bengal

ZMA 112.827, syntype (1)

Torpedo mackayana Metzelaar, 1919: 197-198.

Senegal

ZMA 100.443, holotype

RAJIFORMES

Raja annandalei Weber, 1913: 598-600.

Indonesia

ZMA 113.492, lectotype, designated by Stehmann,
1976: 158-163.

ZMA 112.641, paralectotype (1)

Raja sibogae Weber, 1913: 600-602.

Indonesia

ZMA 113.491, lectotype, designated by Stehmann,
1976: 138-145.

ZMA 112.640, paralectotypes (2)

ANGUILLIFORMES

ANGUILLOIDEI

Anguilla spengeli Weber, 1912: 591-593.

Indonesia

ZMA 116.466, syntype (1)

Brachysomophis kampeni Weber & de Beaufort,
1916: 316-317.

Indonesia

ZMA 101.351, holotype

Callechelys sibogae Weber, 1913: 49-50.

Indonesia

ZMA 109.034, holotype

Cercomites flagellifer Weber, 1913: 5.

Indonesia

ZMA 112.624, syntype (1)

ZMA 112.625, syntype (1)

Congrellus roosendaali Weber & de Beaufort,

1916: 261-262.

Indonesia

ZMA 110.012, holotype

ZMA 110.013, paratype (1)

Gymnothorax megapterus Weber, 1913: 57-58.

Indonesia

ZMA 108.474, holotype

Leptocephalus hjorti Weber, 1913: 71-72.

Indonesia

ZMA 112.601, holotype

Leptocephalus indicus Weber, 1913: 73-74.

Indonesia

ZMA 112.602, holotype

Leptocephalus peterseni Weber, 1913: 72.

Indonesia

ZMA 112.604, syntype (1)

ZMA 112.605, syntype (1)

Leptocephalus schmidti Weber, 1913: 74-76.

Indonesia

ZMA 112.603, holotype

Moringua floresiana Weber & de Beaufort, 1916: 340.

Indonesia

ZMA 112.615, syntypes (5)

Muraena angusticauda Weber & de Beaufort, 1916: 389

New Guinea

ZMA 102.162, holotype

Muraena dinocephala Metzelaar, 1919: 211-212.

Malaya

ZMA 108.470, holotype

Muraenichthys acutirostris Weber & de Beaufort,

1916: 279-280.

Indonesia

ZMA 112.643, syntypes (2)

Muraenichthys sibogae Weber & de Beaufort,

1916: 276-277.

Indonesia

ZMA 112.667, syntypes (2)

ZMA 112.668, syntype (1)

ZMA 112.669, syntype (1)

Neenchelys buitendijki Weber & de Beaufort,

1916: 268-269.

Indonesia

ZMA 102.171, syntype (1)

ZMA 112.614, syntype (1)

Sphagebranchus gjellerupi Weber & de Beaufort,

1916: 326.

New Guinea

ZMA 104.146, holotype

Sphagebranchus heyningi Weber, 1913: 46-47.

Indonesia

ZMA 111.200, holotype

Sphagebranchus huysmani Weber, 1913: 48-49.

Indonesia

ZMA 104.149, syntypes (2)

Sphagebranchus klazingai Weber, 1913: 47-48.

Indonesia

ZMA 104.147, holotype

ZMA 104.148, paratype (1)

Sphagebranchus vulturis Weber & de Beaufort,

1916: 319-320.

Indonesia

ZMA 104.153, holotype

CLUPEIFORMES

CLUPEOIDEI

Clupea koningsbergi Weber & de Beaufort,

1912: 14-16.

Indonesia

ZMA 100.864, syntypes (9)

ZMA 100.865, syntype (1)

Clupeoides venulosus Weber & de Beaufort,

1912: 3-9.

New Guinea

ZMA 114.870, lectotype, designated by
Roberts, 1978: 26-27.

ZMA 100.939, paralectotypes (2)

ZMA 100.936, paralectotypes (5)

Grasseichthys gabonensis Géry, 1964: 1-3.

Gabon

ZMA 109.830, paratypes (3)

Pellona kampeni Weber & de Beaufort, 1913: 87.

Indonesia

ZMA 112.594, syntypes (3)

ZMA 112.595, syntype (1)

Rhinosardinia serrata Eigenmann, 1912: 445.

(British) Guyana

ZMA 101.009, paratypes (5)

Thryssa brevicauda Roberts, 1978: 29.

New Guinae

ZMA 114.435, paratypes (3)

Thryssa rastrosa Roberts, 1978: 29.

New Guinea

ZMA 114.434, paratypes (5)

SALMONIFORMES

GALAXIOIDEI

Galaxias neocaledonicus Weber & de Beaufort,
1913: 173-174.

New Caledonia

ZMA 104.700, syntypes (2)

Parasalanx annitae van Dam, 1926: 342.

China

ZMA 112.587, holotype

Prototroctes semoni Weber, 1895: 274.

Australia
ZMA 112.579, syntypes (2)

STOMIATOIDEI

Stylophthalmus braueri Weber, 1913: 16-17.

Indonesia
ZMA 110.847, syntype (1)
ZMA 110.848, syntype (1)

ALEPOCEPHALOIDEI

Bathytroctes calcaratus Weber, 1913: 11-12.

Indonesia
ZMA 112.612, syntype (1)
ZMA 112.613, syntype (1)

Promacheon sibogae Weber, 1913: 85.

Indonesia
ZMA 112.630, syntype (1)
ZMA 112.631, syntype (1)

MYCTOPHOIDEI

Diaphus malayanus Weber, 1913: 89-90.

Indonesia
ZMA 109.186, syntype (1)
ZMA 109.187, syntypes (5)
ZMA 109.193, syntypes (2)

Diaphus suborbitalis Weber, 1913: 90-91.

Indonesia
ZMA 109.986, syntype (1)
ZMA 109.987, syntype (1)

Saurida brasiliensis Norman, 1935: 125-126.

Brazil

ZMA 113.538, paratypes (2)

Saurida parri Norman, 1935: 126-127.

Angola

ZMA 113.539, paratype (1)

CYPRINIFORMES

CHARACOIDEI

Acanthocharax microlepis Eigenmann, 1912: 405.

(British) Guyana

ZMA 110.658, paratype (1)

Acestrorhynchus altus Menezes, 1969: 52-57.

Brazil

ZMA 110.399, paratypes (2)

Alestopetersius xenurus tumbensis Hoedeman,

1951: 8.

Zaire

ZMA 100.166, lectotype, designated by Matthes,

1964: 178.

ZMA 100.166a, paralectotype (1)

Anostomus anostomus longus Géry, 1961: 502-503.

Peru

ZMA 114.305, paratype (1)

Anostomus brevior Géry, 1961: 499-500.

French Guiana

ZMA 114.304, paratype (1)

Anostomus spiloclistron Winterbottom, 1974: 153-163.

Surinam

ZMA 112.685, holotype

ZMA 105.776, paratypes (6)

ZMA 105.777, paratypes (4)

Aphyocharax erythrurus Eigenmann, 1912: 313-314.

(British) Guyana

ZMA 102.158, paratype (1)

Astyanax abramoides Eigenmann, 1909: 21-22.

(British) Guyana

ZMA 101.011, paratypes (2)

ZMA 101.036, paratypes (3)

Astyanax essequibensis Eigenmann, 1909: 17-18.

(British) Guyana

ZMA 101.010, paratypes (3)

Astyanax guianensis Eigenmann, 1909: 16-17.

(British) Guyana

ZMA 101.028, paratype (1)

ZMA 101.035, paratypes (3)

Astyanax mutator Eigenmann, 1909: 18-19.

(British) Guyana

ZMA 101.027, paratype (1)

Axelrodia lindeae Géry, 1973: 111-115.

Brazil

ZMA 113.865, paratypes (2)

Axelrodia riesei Géry, 1966: 111-118.

Colombia

ZMA 113.865, paratypes (2)

Boehlkea fredcochui Géry, 1966: 211-236.

Colombia

ZMA 113.828, paratype (1)

Brittanichthys axelrodi Géry, 1965: 13-14-18,
20-24, 61-62.

Brazil

ZMA 113.850, paratype (1)

Bryconamericus deuterodonoides euryodous

Schultz, 1944: 344-346.

Venezuela

ZMA 102.144, paratypes (8)

Bryconella haraldi Géry, 1965: 28-30.

Brazil

ZMA 113.864, paratype (1)

Bryconops inpai Knöppel, Junk & Géry,

1968: 231-246.

Brazil

ZMA 113.807, paratypes (2)

Carnegiella strigata surinamensis Hoedeman,

1952: 15-16.

Surinam

ZMA 100.316a, holotype

ZMA 100.316b, paratypes (3)

ZMA 100.315, paratypes (2)

ZMA 100.317, paratype (1)

ZMA 100.318, paratypes (7)

ZMA 100.319, paratypes (5)

ZMA 100.321, paratypes (9)

ZMA 100.322, paratypes (6)

ZMA 100.323, paratypes (29)

ZMA 100.352, paratypes (22)

ZMA 100.355, paratypes (11)

ZMA 100.356, paratypes (107)

Ceratobranchia binghami Eigenmann, 1927: 357-358

Peru

ZMA 113.834, paratype (1)

Characidium blennioides Eigenmann, 1909: 37-38.

(British) Guyana

ZMA 100.988, paratype (1)

Characidium chupa chupa Schultz, 1944: 283-286.

Venezuela

ZMA 110.442, paratypes (3)

Characidium vintoni Eigenmann, 1909: 36-37.

(British) Guyana

ZMA 100.258, paratype (1)

Characidium voladorita Schultz, 1944: 280-282.

Venezuela

ZMA 100.363, paratypes (4)

ZMA 102.115, paratypes (3)

Characidium zebra Eigenmann, 1909: 38-39.

(British) Guyana

ZMA 100.255, paratype (1)

Cheirodon dialepturus Fink & Weitzman, 1974: 5-11

Panama

ZMA 112.473, paratypes (2)

Cheirodon gracilis Géry, 1960: 29-30.

French Guiana

ZMA 113.856, paratype (1)

Cheirodon gracilis littoris Géry, 1960: 31-32.

French Guiana

ZMA 100.614, paratype (1)

Cheirodon kriegi Schindler, 1937: 1-2 of reprint.

Paraguay

ZMA 114.445, paratype (1)

Creagrutus hildebrandi Schultz, 1944: 330-334.

Venezuela

ZMA 102.113, paratypes (7)

ZMA 113.826, paratype (1)

Curimatus esperanzae pijpersi Géry, 1966: 123-125

Surinam

ZMA 104.283, holotype

ZMA 104.284, paratypes (8)

ZMA 104.285, paratypes (3)

Curimatus morawhanna Eigenmann, 1912: 266.

(British) Guyana

ZMA 100.987, paratype (1)

Cyrtocharax magdalena venezuelae Schultz,

1944: 298-302.

Venezuela

ZMA 110.436, paratype (1)

ZMA 110.438, paratype (1)

Deuterodon pinnatus Eigenmann, 1909: 25-27.

(British) Guyana

ZMA 101.030, paratype (1)

ZMA 101.034, paratype (1)

Duboisialestes bifasciatus Poll, 1967: 138-141.

Zaire

ZMA 104.771, paratype (1)

Eretmobrycon bayano Fink, 1976: 331-344.

Panama

ZMA 113.490, paratypes (3)

Gasteropelecus sternicla morae Hoedeman, 1952: 11.

(British) Guyana

ZMA 100.341, holotype

Gephyrocharax venezuelae Schultz, 1944: 324-326.

Venezuela

ZMA 114.670, paratype (1)

Gymnocorymbus socolofi Géry, 1964: 25-27.

Colombia

ZMA 113.859, paratype (1)

Hemibrycon dentatus jabonero Schultz,

1944: 363-366.

Venezuela

ZMA 102.112, paratypes (10)

Hemibrycon surinamensis Géry, 1962: 71-80.

Surinam

ZMA 104.188, holotype

ZMA 100.347, paratypes (7)

Hemigrammus analis Durbin, 1909: 64-65.

(British) Guyana

ZMA 100.973, paratype (1)

ZMA 101.012, paratype (1)

Hemigrammus cylindricus Durbin, 1909: 62-64.

(British) Guyana

ZMA 100.984, paratype (1)

Hemigrammus erythrozonus Durbin, 1909: 56-58.

(British) Guyana

ZMA 101.032, paratype (1)

Hemigrammus guyanensis Géry, 1959: 254-256.

French Guiana

ZMA 100.630, paratypes (2)

ZMA 113.854, paratypes (2)

Hemigrammus orthus Durbin, 1909: 61-62.

(British) Guyana

ZMA 100.977, paratype (1)

Hemigrammus paipayensis Pearson, in Eigenmann &
Myers, 1929: 533-534.

Peru

ZMA 114.207, syntype (1)

Hemigrammus rodwayi Durbin, 1909: 58-60.

(British) Guyana

ZMA 100.987, paratypes (3)

Hemigrammus unilineatus cayennensis Géry,
1959: 248-250.

French Guiana

ZMA 101.049, paratype (1)

Hemigrammus vorderwinkleri Géry, 1963: 9-11, 14.

Brazil

ZMA 113.852, paratype (1)

Hoplocharax goethei Géry, 1966: 291-296.

Brazil

ZMA 113.838, paratype (1)

Hyphessobrycon ecuadorensis Eigenmann & Henn,
1914: 9-10.

Ecuador

ZMA 113.819, paratype (1)

Hyphessobrycon eos Durbin, 1909: 69-71.

(British) Guyana

ZMA 100.983, paratype (1)

ZMA 101.031, paratype (1)

Hyphessobrycon georgetti Géry, 1961: 121-128

Surinam

ZMA 103.269, holotype

ZMA 104.184, paratypes (9)

Hyphessobrycon griemi Hoedeman, 1957: 87-89.

Brazil

ZMA 101.936a, holotype

ZMA 101.936b, paratypes (2)

Hyphessobrycon rosaceus Durbin, 1909: 67-68.

(British) Guyana

ZMA 101.013, paratype (1)

Hyphessobrycon rubrostigma Hoedeman, 1956:

312-313.

Colombia

ZMA 101.935a, holotype

ZMA 101.935b, paratypes (6)

Hyphessobrycon saizi Géry, 1964: 46.

Colombia

ZMA 114.206, paratype (1)

Hyphessobrycon stictus Durbin, 1909: 71-72.

(British) Guyana

ZMA 100.974, paratype (1)

ZMA 101.033, paratypes (2)

Hyphessobrycon tenuis Géry, 1964: 10-12.

Peru

ZMA 113.853, paratype (1)

Hyphessobrycon vilmae Géry, 1966: 63-70.

Brazil

ZMA 113.825, paratype (1)

Iguanodectes adujai Géry, 1970: 419-420.

Brazil

ZMA 113.867, paratype (1)

Iguanodectes geisleri Géry, 1970: 422-425.

Brazil

ZMA 113.866, paratypes (3)

Jobertina eletrioides Géry, 1960: 4-8.

French Guiana

ZMA 101.044, paratype (1)

Joinvillea rosae Steindachner, 1908: 28-31.

Brazil

ZMA 114.488, syntype (1)

Lepidarchus adonis signifer Isbrücker,

1970: 133-140.

Liberia

ZMA 110.208, holotype

ZMA 110.209, paratypes (11)

ZMA 110.210, paratype (1)

Megalampodus roseus Géry, 1960: 26-29.

French Guiana

ZMA 100.620, paratypes (2)

Moenkhausia agnesae Géry, 1965: 14-16.

Brazil

ZMA 113.863, paratype (1)

Moenkhausia browni Eigenmann, 1909: 13-15.

(British) Guyana

ZMA 110.639, paratype (1)

ZMA 110.649, paratype (1)

Moenkhausia georgiae Géry, 1966: 104-108.

Surinam

ZMA 104.223, holotype

ZMA 104.224, paratypes (11)

Moenkhausia hemigrammoides Géry, 1966: 109-112.

Surinam

ZMA 104.227, holotype

ZMA 104.228, paratypes (4)

ZMA 104.229, paratypes (6)

Moenkhausia phaeonota Fink, 1979: 2-11.

Brazil

ZMA 115.273, paratype (1)

Moenkhausia surinamensis Géry, 1966: 102-104.

Surinam

ZMA 104.221, holotype

ZMA 104.222, paratype (1)

Moenkhausia takasei Géry, 1964: 13-15, 59-60.

Brazil

ZMA 113.849, paratype (1)

Nannaethiops geisleri Hoedeman, 1956: 259-261.

Nigeria

ZMA 104.145, holotype

Nannostomus beckfordi surinami Hoedeman,

1954: 84-85.

Surinam

ZMA 100.514a, holotype
 ZMA 100.514b, paratypes (220)

Nannostomus bifasciatus Hoedeman, 1954: 85-87.
 Surinam
 ZMA 100.513, holotype (could not be traced)
 ZMA 100.513, paratypes (3)

Nannostomus marginatus Eigenmann, 1909: 41-42.
 (British) Guyana
 ZMA 100.991, paratype (1)

Nannostomus marginatus picturatus Hoedeman,
 1954: 87-89.
 Surinam
 ZMA 100.324a, holotype
 ZMA 100.324b, paratypes (4)
 ZMA 100.515, paratypes (22)

Nematobrycon lacortei Weitzman & Fink, 1971:
 59-68.
 Colombia
 ZMA 110.740, paratypes (2)

Oxybrycon parvulus Géry, 1964: 15-17.
 Peru
 ZMA 113.861, paratypes (2)

Phenacogaster megalostictus Eigenmann, 1909:
 28-30.
 (British) Guyana
 ZMA 100.972, paratype (1)

Poecilobrycon ocellatus Eigenmann, 1909: 45-46.
 (British) Guyana
 ZMA 100.519, paratype (1)

Poecilocharax bovallii Eigenmann, 1909: 34-35.

(British) Guyana

ZMA 110.648, paratypes (5)

Pristella aubynei Eigenmann, 1909: 24-25.

(British) Guyana

ZMA 100.254, paratypes (4)

Pseuderythrinus rosapinnis Hoedeman, 1950:

79-91.

Surinam

ZMA 100.310, holotype

Pseudopristella simulata Géry, 1960: 18-23.

French Guiana

ZMA 100.621, paratypes (6)

ZMA 113.855, paratypes (2)

Roebooides dayi dientonito Schultz, 1944: 304-307.

Venezuela

ZMA 110.437, paratypes (6)

ZMA 113.846, paratype (1)

Saccoderma melanostigma Schultz, 1944: 315-318.

Venezuela

ZMA 114.669, paratype (1)

Schizodon fasciatum corti Schultz, 1944: 269-271.

Venezuela

ZMA 102.118, paratype (1)

Thayeria ifati Géry, 1959: 128-133.

French Guiana

ZMA 100.650, paratypes (2)

ZMA 113.857, paratype (1)

Tylobronchus maculosus Eigenmann, 1912: 272-273.

(British) Guyana

ZMA 100.976, paratype (1)

Tyttobrycon dorsimaculatus Géry, 1973: 118-121.

Bolivia

ZMA 113.851, paratype (1)

Tyttobrycon xeruini Géry, 1973: 126-128.

Brazil

ZMA 113.847, paratypes (2)

GYMNOTOIDEI

Gymnotus anguillaris Hoedeman, 1962: 55.

Surinam

ZMA 100.338a, holotype

ZMA 100.338b, paratype (1)

Gymnotus coropinae Hoedeman, 1962: 55.

Surinam

ZMA 100.185, holotype

Parupygus litaniensis Hoedeman, 1962: 98-99.

French Guiana

ZMA 100.248, holotype

ZMA 100.407, paratype (1)

Parupygus savannensis Hoedeman, 1962: 58-60.

Surinam

ZMA 102.375, holotype

Sternarchogiton cuchillejo Schultz, 1949: 72-74.

Venezuela

ZMA 102.119, paratypes (2)

Sternopygus pejeraton Schultz, 1949: 60-61.

Venezuela

ZMA 102.120, paratypes (2)

CYPRINOIDEI

Acanthopthalmus lorentzi Weber & de Beaufort,

1916: 32-33.

Indonesia

ZMA 103.259, syntypes (3)

Acanthopthalmus muraeniformes de Beaufort,

1933: 32.

Singapore

ZMA 103.185, syntypes (3)

Acanthopthalmus vermicularis Weber & de Beaufort,

1916: 34.

Indonesia

ZMA 100.260, holotype

Aphyocypris normalis Nichols & Pope, 1927: 376.

China

ZMA 114.609, paratypes (2)

Barbus anoplus Weber, 1897: 151-152.

South Africa

ZMA 100.995, lectotype, designated by Matthes,
1964: 179.

ZMA 100.995a, paralectotypes (148)

ZMA 101.348, paralectotypes (9)

ZMA 101.349, paralectotypes (11)

Barbus breyeri Weber, 1897: 154.

South Africa

ZMA 100.257, lectotype, designated by Matthes,

1964: 180.

ZMA 100.257a, paralectotypes (4)

Barbus dezwaani Weber & de Beaufort, 1912: 4-5.

Indonesia

ZMA 112.644, holotype

Barbus hexazona Weber & de Beaufort, 1912: 6-7.

Indonesia

ZMA 100.253, syntype (1)

ZMA 103.200, syntypes (13)

Barbus lineatus Duncker, 1904: 180.

Malaya

ZMA 103.220, syntype (1)

Barbus pahangensis Duncker, 1904: 179.

Malaya

ZMA 103.213, syntypes (2)

Barbus viviparus Weber, 1897: 152-153.

South Africa

ZMA 100.539, lectotype, designated by Matthes,
1964: 180.

ZMA 100.538, paralectotypes (7)

ZMA 100.978, paralectotype (1)

ZMA 100.980, paralectotype (1)

ZMA 100.981, paralectotypes (3)

ZMA 100.985, paralectotype (1)

ZMA 100.989, paralectotypes (21)

Barilius dogarsinghi Hora, 1921: 191-193.

India

ZMA 115.794, paratype (1)

Cobitis aurata vallachica Nalbant, 1957: 209-212.

Romania

ZMA 114.465, paratypes (3)

Cosmochilus falcifer Regan, 1906: 66-67.

Indonesia

ZMA 114.319, paratype (1)

Crossochilus gnathopogon Weber & de Beaufort,
1916: 233-234.

Indonesia

ZMA 112.674, syntypes (2)

Danio acuticephala Hora, 1921: 193-195.

India

ZMA 115.793, paratype (1)

Engraulicypris spinifer Bailey & Matthes, 1971: 79-83.

Tanzania

ZMA 109.708, paratype (1)

ZMA 109.709, paratype (1)

Eucirrhichthys doriae Perugia, 1892: 1009-1010.

Indonesia

ZMA 114.898, syntype (1)

Eustira maassi Weber & de Beaufort, 1912: 10.

Indonesia

ZMA 110.111, holotype

Gnathopogon atromaculatus Nichols & Pope, 1927: 351.

China

ZMA 115.792, paratypes (3)

Gobio rivuloides Nichols, 1925: 5-6.

China

ZMA 110.496, paratype (1)

Helgia modesta Vinciguerra, 1890: 202.

Burma

ZMA 100.982, syntypes (2)

Hemiculterella engraulis Nichols, 1925: 7.

China

ZMA 115.786, paratype (1)

Homaloptera amphisquamata Weber & de Beaufort,

1916: 12.

Indonesia

ZMA 100.998, holotype

ZMA 100.994, paratypes (54)

Homaloptera heterolepis Weber & de Beaufort,

1916: 12-13.

Indonesia

ZMA 100.999, syntypes (3)

Homaloptera lepidogaster Weber & de Beaufort,

1916: 14.

Indonesia

ZMA 100.256, syntypes (3)

Homaloptera weberi Hora, 1932: 284-285.

Indonesia

ZMA 100.990, syntype (1)

Labeo bicolor Smith, 1931: 9-11.

Thailand

ZMA 115.791, paratypes (2)

Labeobarbus longipinnis Weber & de Beaufort,

1916: 149.

Indonesia

ZMA 113.008, syntype (1)

ZMA 113.009, syntypes (2)

Labeobarbus nanningsi de Beaufort, 1933: 493-495.

Angola

ZMA 113.010, holotype

Laubuca caeruleostigmata Smith, 1931: 5-6.

Thailand

ZMA 115.789, paratypes (3)

Lepidocephalichthys irrorata Hora, 1921: 196-197.

India

ZMA 115.797, paratypes (2)

ZMA 115.796, paratype (1)

Lepidocephalus furcatus de Beaufort, 1933: 32-33.

Malaya

ZMA 100.979, paratype (1)

Leptobarbus melanopterus Weber & de Beaufort,

1916: 97.

Indonesia

ZMA 114.963, holotype

Leucogobio polytaenia Nichols, 1925: 6.

China

ZMA 114.894, paratypes (3)

Lissochilus smedleyi de Beaufort, 1933: 34.

Malaya

ZMA 101.007, syntype (1)

Lissochilus sumatranus Weber & de Beaufort,

1916: 169-170.

Indonesia

ZMA 112.606, syntypes (7)

Modigliana papillosa Perugia, 1893: 6.

Indonesia

ZMA 112.874, syntypes (2)

Noemacheilus alepidotus nalbanti Banarescu & Mirza,

1972: 121-123.

Pakistan

ZMA 114.458, paratype (1)

Noemacheilus anambarensis Mirza & Banarescu,

1970: 51-52.

Pakistan

ZMA 114.459, paratype (1)

Noemacheilus griffithi hazarensis Omer & Mirza,

1975: 199-209.

Pakistan

ZMA 115.953, paratypes (2)

Noemacheilus harnaiensis Mirza & Nalbant, 1969:

89-90.

Pakistan

ZMA 114.460, paratype (1)

Noemacheilus horai machensis Mirza & Nalbant,

1970: 54-55.

Pakistan

ZMA 114.461, paratype (1)

Noemacheilus kuiperi de Beaufort, 1939: 190-191.

Indonesia

ZMA 102.145, syntypes (21)

ZMA 112.889, syntype (1)

Noemacheilus pakistanicus Mirza & Banarescu, 1969:

87-88.

Pakistan

ZMA 114.462, paratype (1)

Noemacheilus rupecola alepidotus Mirza & Banarescu,
1970: 55-57.

Pakistan

ZMA 114.463, paratype (1)

ZMA 114.464, paratype (1)

Noemacheilus sewerzowi Nikolsky, 1938: 319-328.

U.S.S.R.

ZMA 110.487, paratypes (2)

Osteochilus brevicauda Weber & de Beaufort,

1916: 138-139.

Indonesia

ZMA 100.167, syntype (1)

ZMA 112.675, syntypes (14)

Osteochilus intermedius Weber & de Beaufort,

1916: 134.

Indonesia

ZMA 112.609, syntypes (8)

ZMA 112.610, syntypes (2)

Paracrossochilus bicornis Popta, 1904: 201-202.

Indonesia

ZMA 114.485, syntype (1)

Pseudorasbora altipinna Nichols, 1925: 5.

China

ZMA 115.788, paratype (1)

Pseudorasbora depressirostris Nichols, 1925: 5-6.

China

ZMA 115.785, paratypes (3)

Pseudorasbora fowleri Nichols, 1925: 5.

China

ZMA 115.787, paratypes (3)

Puntius nini Weber & de Beaufort, 1916: 202-203

Indonesia

ZMA 111.505, syntypes (4)

Puntius sunieri Weber & de Beaufort, 1916: 199.

Indonesia

ZMA 112.673, holotype

Puntius tawarensis Weber & de Beaufort,

1916: 185.

Indonesia

ZMA 112.646, syntypes (11)

Rasbora cephalotaenia steineri Nichols & Pope,

1927: 364-365.

China

ZMA 103.258, paratypes (3)

Rasbora dorsiocellata Duncker, 1904: 182.

Malaya

ZMA 103.217, syntypes (3)

Rasbora heteromorpha Duncker, 1904: 182.

Malaya

ZMA 103.218, syntypes (3)

Rasbora jacobsoni Weber & de Beaufort, 1916:

75-76.

Indonesia

ZMA 100.646, syntypes (10)

ZMA 109.265, syntypes (4)

ZMA 109.266, syntypes (12)

- ZMA 109.267, syntypes (2)
- ZMA 109.268, syntypes (6)
- ZMA 109.269, syntypes (15)
- ZMA 109.270, syntypes (13)
- ZMA 109.276, syntypes (5)

Rasbora maculata Duncker, 1904: 182.

Malaya

- ZMA 103.216, syntypes (5)

Rasbora meinkenii de Beaufort, 1931: 1.

Indonesia

- ZMA 100.259, syntypes (2)

Rasbora pauciperforata Weber & de Beaufort

1916: 78-79.

Indonesia

- ZMA 112.590, syntypes (118)

Rasbora reticulatus Weber & de Beaufort,

1915: 6-7.

Indonesia

- ZMA 109.586, syntypes (233)
- ZMA 109.587, syntypes (87)
- ZMA 109.588, syntypes (3)
- ZMA 109.589, syntypes (9)

Rasbora rutteni Weber & de Beaufort,

1916: 68-69.

Indonesia

- ZMA 102.360, syntypes (23)
- ZMA 102.361, syntypes (15)
- ZMA 112.589, syntype (1)

Rasbora semilineata Weber & de Beaufort,

1916: 80-81.

Indonesia

ZMA 112.588, syntypes (5)

Rasbora tawarensis Weber & de Beaufort,

1916: 63-65.

Indonesia

ZMA 112.276, syntypes (5)

ZMA 112.277, syntypes (4)

ZMA 112.278, syntypes (3)

Rasbora trifasciata Popta, 1905: 176-177.

Indonesia

ZMA 109.274, syntype (1)

Rasborinus hainanensis Nichols & Pope,

1927: 377.

China

ZMA 114.610, paratypes (3)

Sarcocheilichthys nigripinnis tungting

Nichols & Pope, 1927: 354.

China

ZMA 114.608, paratype (1)

Scaphiodon watsoni Day, 1871: 324.

Pakistan

ZMA 115.924, syntypes (2)

ZMA 115.925, syntype (1)

Schistura arifi Mirza & Banarescu, 1981:

113-114.

Pakistan

ZMA 116.442, paratype (1)

Schistura curtistigma Mirza & Nalbant, 1981

114-116.

Pakistan

ZMA 116.443, paratype (1)

Schistura fascimaculata Mirza & Nalbant, 1981:

121-123.

Pakistan

ZMA 116.445, paratypes (2)

Schistura kessleri lepidocaulis Mirza & Nalbant,

1981: 110-111.

Pakistan

ZMA 116.441, paratypes (2)

Schistura kohatensis Mirza & Banarescu, 1981:

123-125.

Pakistan

ZMA 116.446, paratypes (2)

Schistura macrolepis Mirza & Banarescu, 1981:

116-118.

Pakistan

ZMA 116.444, paratype (1)

Schistura microlabra Mirza & Nalbant, 1981:

126-128.

Pakistan

ZMA 116.448, paratype (1)

Schistura shadiwalensis Mirza & Nalbant, 1981:

125-126.

Pakistan

ZMA 116.447, paratype (1)

Thynnichthys vaillanti Weber & de Beaufort,

1916: 122.

Indonesia

ZMA 112.611, holotype

Tor zhobensis Mirza, 1967: 54-56.

Pakistan

ZMA 114.741, paratype (1)

Tylognathus siamensis de Beaufort, 1927: 5-6.

Thailand

ZMA 112.583, holotype

ZMA 112.584, paratype (1)

Vaillantella maassi Weber & de Beaufort,

1912: 11-12.

Indonesia

ZMA 100.993, holotype

SILURIFORMES

Arius acrocephalus Weber, 1913: 543-544.

New Guinea

ZMA 111.087, syntype (1)

ZMA 111.088, syntypes (2)

ZMA 111.089, syntype (1)

ZMA 111.090, syntype (1)

Arius carinatus Weber, 1913: 537-538.

New Guinea

ZMA 109.295, syntype (1)

ZMA 111.109, syntypes (18)

ZMA 111.110, syntype (1)

ZMA 111.111, syntype (1)

ZMA 111.112, syntype (1)

Arius digulensis Hardenberg, 1936: 369.

New Guinea

ZMA 110.781, holotype

Arius nudidens Weber, 1913: 538-540.

New Guinea

ZMA 111.507, syntype (1)

ZMA 111.508, syntype (1)

ZMA 111.509, syntype (1)

Aspidoras albater Nijssen & Isbrücker,

1976: 115-116.

Brazil

ZMA 113.592, paratypes (2)

Aspidoras brunneus Nijssen & Isbrücker,

1976: 116-117.

Brazil

ZMA 113.588, holotype

ZMA 109.380, paratypes (4)

Aspidoras carvalhoi Nijssen & Isbrücker,

1976: 117.

Brazil

ZMA 113.589, paratype (1)

Aspidoras eurycephalus Nijssen & Isbrücker,

1976: 118.

Brazil

ZMA 113.593, paratype (1)

Aspidoras fuscoguttatus Nijssen & Isbrücker,

1976: 118-119.

Brazil

ZMA 113.594, paratypes (5)

Aspidoras maculosus Nijssen & Isbrücker,

1976: 119-120.

Brazil

ZMA 113.595, paratype (1)

Aspidoras menezesi Nijssen & Isbrücker,

1976: 120-121.

Brazil

ZMA 113.596, paratypes (5)

Aspidoras poecilus Nijssen & Isbrücker,

1976: 121-122.

Brazil

ZMA 113.597, paratype (1)

Aspidoras spilotus Nijssen & Isbrücker,

1976: 123-124.

Brazil

ZMA 113.590, holotype

ZMA 112.284, paratypes (21)

ZMA 113.591, paratypes (2)

Aspidoras virgulatus Nijssen & Isbrücker,

1980: 133-139.

Brazil

ZMA 116.218, paratype (1)

ZMA 116.219, paratype (1)

Astroblepus phelpsi Schultz, 1944: 283-285.

Venezuela

ZMA 102.121, paratypes (9)

Auchenipterus brevior Eigenmann, 1912: 202-203.

(British) Guyana

ZMA 104.668, paratype (1)

Bunocephalus amaurus aloikae Hoedeman, 1961:

130-131.

French Guiana

ZMA 102.229, holotype

Bunocephalus amaurus sipaliwini Hoedeman, 1961:

130.

Surinam

ZMA 102.228, holotype

Callichthys armatus Günther, 1868: 475-481.

Peru

ZMA 109.952, paralectotype

Lectotype designated by Nijssen & Isbrücker
1980: 194.Callichthys callichthys bolteni Hoedeman,

1952: 9-11.

Surinam

ZMA 100.303a, holotype

ZMA 100.303b, paratype (1)

ZMA 100.305, paratype (1)

ZMA 100.307, paratype (1)

ZMA 100.308, paratype (1)

ZMA 100.313, paratypes (2)

ZMA 100.314, paratype (1)

Callichthys callichthys demararae Hoedeman,

1952: 10-11.

(British) Guyana

ZMA 100.304, holotype

Centromochlus leopardus Hoedeman, 1961:

135-136.

French Guiana

ZMA 102.233, holotype

Cetopsorhamdia picklei Schultz, 1944: 222-224.

Venezuela

ZMA 102.123, paratypes (4)

Cetopsorhamdia pijpersi Hoedeman, 1961: 132-134

Surinam

ZMA 102.230, holotype

Chaetostoma anomala sovichthys Schultz, 1944:

292-294.

Venezuela

ZMA 102.125, paratypes (7)

Chasmocranus longior Eigenmann, 1912: 162.

(British) Guyana

ZMA 100.992, paratype (1)

Clarias theodora Weber, 1897: 150-151.

South Africa

ZMA 100.647, holotype

Clupisoma naziri Mirza & Awan, 1973: 152-159.

Pakistan

ZMA 115.945, paratype (1)

Cochliodon pospisili Schultz, 1944: 312-313.

Venezuela

ZMA 102.133, paratypes (4)

Copidoglanis equinus Weber, 1913: 527-528.

New Guinea

ZMA 111.105, syntypes (7)

ZMA 111.106, syntype (1)

ZMA 111.107, syntypes (4)

ZMA 111.108, syntypes (2)

Copidoglanis gjellerupi Weber, 1913: 528-529.

New Guinea

ZMA 111.091, holotype

Copidoglanis meraukensis Weber, 1913: 529-530.

New Guinea

ZMA 111.092, syntypes (2)

Copidoglanis novaeguineae Weber, 1908: 226-227.

New Guinea

ZMA 112.670, syntypes (8)

Corydoras agassizii Steindachner, 1877: 138-140

Brazil

ZMA 110.465, paralectotype (1)

Lectotype designated by Nijssen & Isbrücker
1980: 195.Corydoras amapaensis Nijssen, 1972: 417-420.

Brazil

ZMA 110.598, paratypes (2)

ZMA 110.599, paratype (1)

ZMA 110.600, paratypes (4)

ZMA 110.601, paratypes (3)

ZMA 110.602, paratype (1)

ZMA 110.603, paratypes (3)

Corydoras atropersonatus Weitzman & Nijssen,

1970: 123-125.

Ecuador

ZMA 110.382, paratypes (2)

ZMA 110.385, paratypes (3)

ZMA 110.386, paratype (1)

Corydoras bicolor Nijssen & Isbrücker, 1967:

36-37.

Surinam

ZMA 104.627, holotype

ZMA 104.628, paratypes (36)

ZMA 104.629, paratypes (6)

Corydoras bifasciatus Nijssen, 1972: 420-422.

Brazil

ZMA 110.394, paratypes (30)

Corydoras blochi blochi Nijssen, 1971: 92-97.

(British) Guyana

ZMA 110.675, paratype (1)

ZMA 110.724, paratype (1)

ZMA 110.723, paratypes (2)

ZMA 111.005, paratypes (2)

ZMA 110.799, paratypes (2)

Corydoras blochi vittatus Nijssen, 1971: 97-98

Brazil

ZMA 109.990, holotype

ZMA 109.989, paratypes (2)

Corydoras boesemani Nijssen & Isbrücker, 1967:

37-38.

Surinam

ZMA 104.625, paratypes (6)

ZMA 104.638, paratype (1)

Corydoras bondi coppenamensis Nijssen, 1970:

19-20.

Surinam

ZMA 105.877, holotype

ZMA 105.858, paratype (1)

ZMA 105.872, paratypes (239)

ZMA 105.873, paratypes (192)

ZMA 105.874, paratypes (142)

ZMA 105.875, paratypes (9)

Corydoras concolor Weitzman, 1961: 105-110.

Venezuela

ZMA 111.426, paratype (1)

Corydoras condiscipulus Nijssen & Isbrücker,
1980: 494-497.

French Guiana

ZMA 115.332, paratype (1)

ZMA 115.333, paratype (1)

ZMA 115.334, paratype (1)

ZMA 115.355, paratypes (2)

Corydoras dubius Nijssen & Isbrücker, 1967:
38-40.

Surinam

ZMA 104.632, holotype

ZMA 104.633, paratypes (15)

Corydoras ehrhardti Steindachner, 1910: 4-5.

Brazil

ZMA 110.469, paralectotypes (5)

ZMA 110.470, paralectotypes (5)

ZMA 110.471, paralectotypes (5)

Lectotype designated by Nijssen & Isbrücker,
1980: 205.

Corydoras elegans Steindachner, 1877: 141-143.

Brazil

ZMA 114.921, paralectotypes (10)

Lectotype designated by Nijssen & Isbrücker,
1980: 213.

Corydoras ephippifer Nijssen, 1972: 422-423.

Brazil

ZMA 111.082, paratypes (3)

ZMA 111.083, paratypes (3)

Corydoras eques Steindachner, 1877: 140-141.

Brazil

ZMA 110.473, paralectotypes (2)

Lectotype designated by Nijssen & Isbrücker
1980: 208.

Corydoras garbei von Ihering, 1911: 382-383.

Brazil

ZMA 110.938, paralectotype (1)

ZMA 110.939, paralectotype (1)

Lectotype designated by de Miranda Ribeiro,
1955: 395.

Corydoras gossei Nijssen, 1972: 424-425.

Brazil

ZMA 110.396, paratypes (12)

Corydoras gracilis Nijssen & Isbrücker, 1976:

90-91, 94, 96, 98.

Brazil

ZMA 114.687, holotype

ZMA 114.688, paratype (1)

ZMA 114.689, paratype (1)

Corydoras guianensis Nijssen, 1970: 21-22.

Surinam

ZMA 105.933, holotype

ZMA 105.887, paratype (1)

ZMA 105.888, paratypes (4)

ZMA 105.836, paratypes (4)

ZMA 105.837, paratypes (130)

ZMA 106.101, paratype (1)

Corydoras habrosus Weitzman, 1960: 141-145.

Venezuela

ZMA 111.422, paratype (1)

Corydoras heteromorphus Nijssen, 1970: 22-24.

Surinam

ZMA 105.880, holotype
ZMA 105.835, paratypes (3)
ZMA 105.881, paratypes (101)
ZMA 105.883, paratypes (55)
ZMA 105.884, paratypes (14)
ZMA 105.885, paratypes (11)
ZMA 105.886, paratype (1)

Corydoras julii Steindachner, 1906: 478-480.

Brazil

ZMA 110.474, paralectotypes (6)
ZMA 110.475, paralectotypes (3)
Lectotype designated by Nijssen & Isbrücker,
1980: 195-196.

Corydoras macropterus Regan, 1913: 231-232.

Brazil

ZMA 109.953, paralectotype (1)
Lectotype designated by Nijssen & Isbrücker,
1980: 206.

Corydoras maculifer Nijssen & Isbrücker, 1971:

183-186.

Brazil

ZMA 110.681, paratype (1)

Corydoras marmoratus Steindachner, 1879: 26-28.

Argentina

ZMA 110.477, paralectotype (1)
ZMA 110.478, paralectotype (1)
Lectotype designated by Nijssen & Isbrücker,
1980: 204.

Corydoras micracanthus Regan, 1912: 211.

Argentina

ZMA 109.951, paralectotype (1)

Lectotype designated by Nijssen & Isbrücker,
1980: 206.

Corydoras multimaculatus Steindachner, 1907: 291

Brazil

ZMA 110.479, paralectotypes (8)

Lectotype designated by Nijssen & Isbrücker,
1980: 196.

Corydoras myersi de Miranda Ribeiro, 1942:

427-428.

Brazil

ZMA 115.272, paratypes (4)

Corydoras nanus Nijssen & Isbrücker, 1967: 41-42

Surinam

ZMA 104.642, paratypes (2)

Corydoras narcissus Nijssen & Isbrücker, 1980:

497-499.

Brazil

ZMA 115.178, holotype

Corydoras nattereri triseriatus von Ihering,

1911: 386.

Brazil

ZMA 110.940, paralectotype (1)

ZMA 110.941, paralectotype (1)

Lectotype designated by Britski, 1969: 207.

Corydoras octocirrus Nijssen, 1970: 26-29.

Surinam

ZMA 106.017, holotype

ZMA 104.655, paratypes (2)

ZMA 105.237, paratypes (3)

ZMA 105.238, paratypes (5)

ZMA 105.367, paratypes (23)

ZMA 105.871, paratypes (2)

ZMA 105.891, paratypes (2)

ZMA 109.066, paratypes (3)

Corydoras oelemariensis Nijssen, 1970: 29-30.

Surinam

ZMA 108.111, paratypes (82)

Corydoras oiapoquensis Nijssen, 1972: 425-428.

French Guiana

ZMA 110.589, paratypes (10)

ZMA 110.590, paratypes (2)

ZMA 110.591, paratypes (4)

ZMA 110.592, paratypes (12)

ZMA 110.593, paratypes (8)

ZMA 110.594, paratypes (6)

Corydoras ornatus Nijssen & Isbrücker, 1976:

125-129.

Brazil

ZMA 114.690, holotype

ZMA 114.691, paratypes (3)

Corydoras orphnopterus Weitzman & Nijssen, 1970

125-126.

Ecuador

ZMA 110.383, paratype (1)

Corydoras ourastigma Nijssen, 1972: 428-429.

Brazil

ZMA 110.615, paratype (1)

Corydoras oxyrhynchus Nijssen & Isbrücker, 1967

42-43.

Surinam

ZMA 104.640, paratype (1)

Corydoras panda Nijssen & Isbrücker, 1971: 186-188.

Peru

ZMA 110.604, paratype (1)

Corydoras pastazensis orcesi Weitzman & Nijssen,

1970: 120-123.

Ecuador

ZMA 110.377, paratypes (2)

ZMA 110.378, paratypes (2)

ZMA 110.379, paratypes (2)

Corydoras prionotos Nijssen & Isbrücker, 1980:

5-7.

Brazil

ZMA 115.323, paratypes (5)

ZMA 110.476, paratypes (3)

Corydoras pulcher Isbrücker & Nijssen, 1973: 2-4.

Brazil

ZMA 112.648, paratype (1)

Corydoras raimundi Steindachner, 1907: 84-85.

Brazil

ZMA 110.480, paralectotypes (9)

Lectotype designated by Nijssen & Isbrücker,

1976: 111-113.

Corydoras reynoldsi Myers & Weitzman, 1960:

105-108.

Colombia

ZMA 111.424, paratype (1)

Corydoras robustus Nijssen & Isbrücker, 1980:

499-502.

Brazil

ZMA 115.179, holotype

Corydoras sanchesi Nijssen & Isbrücker, 1967:
43-44.

Surinam

ZMA 104.630, paratypes (5)

Corydoras saramaccensis Nijssen, 1970: 38-39.

Surinam

ZMA 106.018, holotype

ZMA 105.563, paratypes (8)

ZMA 105.650, paratype (1)

Corydoras schwartzi surinamensis Nijssen, 1970:
39-40.

Surinam

ZMA 105.876, holotype

ZMA 105.878, paratypes (63)

ZMA 105.879, paratypes (28)

Corydoras septentrionalis Gosline, 1940: 16-17.

Venezuela

ZMA 111.423, paratype (1)

ZMA 112.288, paratype (1)

Corydoras simulatus Weitzman & Nijssen, 1970:

126-129

Colombia

ZMA 110.384, paratypes (2)

Corydoras spilurus Norman, 1926: 91-97.

French Guiana

ZMA 109.950, paralectotype (1)

Lectotype designated by Nijssen & Isbrücker,
1967: 33.

Corydoras steindachneri Isbrücker & Nijssen, 1973:

4-7.

Brazil

ZMA 112.657, paratype (1)

Corydoras treitlii Steindachner, 1906: 478.

Brazil

ZMA 110.481, paralectotypes (11)

Lectotype designated by Weitzman, 1964: 116.

Corydoras weitzmani Nijssen, 1971: 91-92.

Peru

ZMA 110.391, paratypes (2)

Corydoras wotroi Nijssen & Isbrücker, 1967: 44-45.

Surinam

ZMA 104.641, paratype (1)

Corydoras xinguensis Nijssen, 1972: 429-432.

Brazil

ZMA 110.392, paratypes (2)

ZMA 110.393, paratype (1)

Doiichthys novaeguineae Weber, 1913: 534-536.

New Guinea

ZMA 104.122, syntypes (5)

Farlowella acus venezuelensis Martín Salazar, 1964

250-251.

Venezuela

ZMA 116.481, syntype (1)

ZMA 116.482, syntype (1)

Farlowella carinata Garman, in Eigenmann &

Eigenmann, 1889: 32-33.

Brazil

ZMA 115.267, paralectotype (1)

ZMA 115.268, paralectotype (1)

Lectotype designated by Isbrücker, 1979: 114.

Farlowella parvicarinata Boeseman, 1971: 42-44.

Surinam

ZMA 105.823, lectotype, designated by Isbrücker,
1979: 114.

ZMA 106.934, paralectotype (1)

Farlowella reticulata Boeseman, 1971: 37-40.

Surinam

ZMA 106.174, lectotype, designated by Isbrücker,
1979: 114.

ZMA 106.932, paralectotypes (2)

Farlowella rugosa Boeseman, 1971: 40-42.

French Guiana

ZMA 106.208, lectotype, designated by Isbrücker,
1979: 114.

ZMA 106.933, paralectotype (1)

Glyptothorax punjabensis Mirza & Kashmiri, 1971:

88-93.

Pakistan

ZMA 114.764, paratype (1)

Glyptothorax stocki Mirza & Nijssen, 1978: 79-85.

Pakistan

ZMA 114.763, holotype

ZMA 115.027, paratype (1)

Harttia nijsseni Boeseman, 1976: 170-175.

Surinam

ZMA 114.310, paratype (1)

Harttia surinamensis Boeseman, 1971: 28-33.

Surinam

ZMA 106.516, paratypes (33)

ZMA 106.517, paratypes (7)

ZMA 106.520, paratype (1)

ZMA 106.521, paratypes (66)

ZMA 110.726, paratype (1)

Hemiodon acipenserinus Kner, 1854: 92-93.

Brazil

ZMA 112.957, paralectotype (1)

Lectotype designated by Isbrücker & Nijssen,
1974: 204.Hemipimelodus aaldereni Hardenberg, 1936: 367-368

New Guinea

ZMA 110.782, holotype

Hemipimelodus macrorhynchus Weber, 1913: 549-551.

New Guinea

ZMA 111.085, syntypes (2)

ZMA 111.086, syntype (1)

Hemipimelodus velutinus Weber, 1908: 225-226.

New Guinea

ZMA 112.654, syntypes (3)

ZMA 112.655, syntypes (6)

ZMA 112.656, syntypes (12)

Hemisilurus moolenburghi Weber & de Beaufort,

1913: 212-213.

Indonesia

ZMA 113.564, syntypes (2)

Hoplosternum littorale daillyi Hoedeman,

1952: 7-8.

Surinam

- ZMA 100.277a, holotype
- ZMA 100.277b, paratype (1)
- ZMA 100.261, paratype (1)
- ZMA 100.281, paratypes (2)
- ZMA 100.282, paratype (1)
- ZMA 100.283, paratype (1)
- ZMA 100.284, paratype (1)
- ZMA 100.285, paratype (1)
- ZMA 100.286, paratype (1)

Hoplosternum thoracatum cayennae Hoedeman, 1961:

130.

Surinam

- ZMA 102.238a, holotype
- ZMA 102.238b, paratypes (3)

Hoplosternum thoracatum surinamensis Hoedeman,

1952: 5-7.

Surinam

- ZMA 100.292, holotype
- ZMA 100.293, paratypes (2)
- ZMA 100.295, paratypes (2)
- ZMA 100.297, paratype (1)
- ZMA 100.298, paratype (1)
- ZMA 100.299, paratypes (5)
- ZMA 100.300, paratype (1)
- ZMA 100.301, paratype (1)

Hypoptopoma guianense Boeseman, 1974: 259-267.

Surinam

- ZMA 106.591, paratypes (9)

Hypostomus copenamensis Boeseman, 1969: 120-125

Surinam

- ZMA 105.856, holotype

ZMA 106.143, paratype (1)

Hypostomus corantijni Boeseman, 1968: 40-42.

Surinam

ZMA 110.171, paratypes (2)

Hypostomus gymnorhynchus tapanahoniensis Boeseman,
1969: 129.

Surinam

ZMA 110.172, paratypes (2)

Hypostomus micromaculatus Boeseman, 1968: 77.

Surinam

ZMA 106.015, paratypes (10)

Hypostomus nickeriensis Boeseman, 1969: 125-129.

Surinam

ZMA 105.765, holotype

ZMA 105.767, paratypes (14)

ZMA 106.012, paratypes (5)

ZMA 106.142, paratypes (10)

Hypostomus pseudoheмиurus macrophthalmus Boeseman,
1968: 56-58.

Surinam

ZMA 110.174, paratypes (2)

Hypostomus pseudoheмиurus pseudoheмиurus Boeseman,
1968: 54-56.

Surinam

ZMA 110.173, paratypes (2)

Hypostomus saramaccensis Boeseman, 1968: 78.

Surinam

ZMA 105.586, paratypes (12)

ZMA 105.621, paratypes (4)

Hypostomus surinamensis Boeseman, 1968: 78.

Surinam

ZMA 105.270, paratypes (25)

ZMA 105.440, paratypes (2)

ZMA 105.534, paratypes (11)

ZMA 105.538, paratypes (5)

ZMA 105.685, paratypes (3)

ZMA 105.739, paratypes (37)

ZMA 105.757, paratypes (3)

ZMA 106.013, paratype (1)

ZMA 106.149, paratypes (43)

ZMA 106.151, paratype (1)

ZMA 106.152, paratypes (3)

Hypostomus ventromaculatus Boeseman, 1968: 79.

Surinam

ZMA 105.555, paratype (1)

ZMA 106.150, paratype (1)

Lambertia atra Perugia, 1894: 551-552.

New Guinea

ZMA 113.360, syntype (1)

Lasiancistrus maracaiboensis Schultz, 1944: 314-317

Venezuela

ZMA 102.135, paratypes (4)

Leiocassis leiacanthus Weber & de Beaufort, 1912:

15-16.

Indonesia

ZMA 112.671, syntype (1)

ZMA 112.672, syntype (1)

Leptodoras linnelli Eigenmann, 1912: 191-192.

(British) Guyana

ZMA 110.690, paratype (1)

Lithoxus lithoides Eigenmann, 1910: 405.

(British) Guyana

ZMA 110.632, paratypes (3)

Loricaria cataphracta Linnaeus, 1758: 307-308.

Surinam

ZMA 109.616, neotype, designated by Isbrücker,
1972: 172-175.

Loricaria cirrhosa Perugia, 1897: 22-23.

Bolivia

ZMA 112.293, paralectotype (1)

Lectotype designated by Isbrücker, 1973: 174.

Loricaria griseus Eigenmann, 1909: 8-9.

(British) Guyana

ZMA 102.160, paratype (1)

Loricaria gymnogaster lagoichthys Schultz, 1944:

331-334.

Venezuela

ZMA 102.126, paratypes (6)

Loricaria jaraguensis Steindachner, 1909: 1-6.

Brazil

ZMA 112.292, paralectotype (1)

Lectotype designated by Isbrücker, 1979: 113.

Loricaria nickeriensis Isbrücker, 1979: 97-98.

Surinam

ZMA 107.561, holotype

ZMA 106.235, paratypes (3)

ZMA 106.236, paratypes (8)

ZMA 106.237, paratypes (8)

Loricaria parnahybae Steindachner, 1907: 153-154.

Brazil

ZMA 115.184, paralectotype (1)

Lectotype designated by Isbrücker, 1979: 110.

Loricaria proluxa Isbrücker & Nijssen, 1978:

188-195.

Brazil

ZMA 113.537, paratype (1)

Loricaria proluxa lentiginosa Isbrücker, 1979: 97.

Brazil

ZMA 115.183, paratype (1)

Loricaria spixii Steindachner, 1881: 97-100.

Brazil

ZMA 115.926, paralectotype (1)

Lectotype designated by Isbrücker, 1979: 113.

Loricaria variegata venezuelae Schultz, 1944:

329-331.

Venezuela

ZMA 102.134, paratypes (3)

Loricaria (Loricariichthys) fallax Steindachner,

1915: 101-103.

Brazil

ZMA 114.349, paralectotype (1)

Lectotype designated by Isbrücker & Nijssen,

1979: 198.

Loricariichthys platymetopon Isbrücker & Nijssen,

1979: 203-210.

Paraguay

ZMA 114.326, paratype (1)

ZMA 110.929, paratypes (6)

ZMA 110.934, paratype (1)

Metaloricaria paucidens Isbrücker, 1975: 1-9

French Guiana

ZMA 112.741, paratype (1)

Microglanis secundus Mees, 1974: 35-37.

Surinam

ZMA 105.545, paratypes (17)

ZMA 106.002, paratypes (20)

ZMA 106.211, paratype (1)

ZMA 106.242, paratypes (2)

ZMA 106.243, paratype (1)

ZMA 106.244, paratypes (6)

ZMA 106.245, paratypes (5)

ZMA 106.246, paratypes (31)

ZMA 106.247, paratypes (11)

ZMA 106.369, paratype (1)

Nangra robusta Mirza & Awan, 1973: 145-151.

Pakistan

ZMA 114.758, paratype (1)

Oloplotosus mariae Weber, 1913: 522.

New Guinea

ZMA 111.103, syntype (1)

ZMA 111.104, syntypes (2)

Pangasius dezwaani Weber & de Beaufort, 1912
14-15.

Indonesia

ZMA 113.011, holotype

Parasturisoma maculata Boeseman, 1971: 33-37

Surinam

ZMA 106.345, paratypes (2)

ZMA 106.390, paratype (1)

ZMA 106.518, paratypes (14)

ZMA 106.519, paratypes (10)

ZMA 106.522, paratypes (14)

Parotocinclus britskii Boeseman, 1974: 267-271.

Surinam

ZMA 106.593, holotype

ZMA 106.592, paratypes (3)

Pimelodella geryi Hoedeman, 1961: 134.

French Guiana

ZMA 102.235, holotype

Pimelodella macturki Eigenmann, 1912: 170-171.

(British) Guyana

ZMA 100.168, paratype (1)

Pimelodella megalops Eigenmann, 1912: 169-170.

(British) Guyana

ZMA 110.629, paratypes (2)

Pimelodus albofasciatus Mees, 1974: 137-140.

Surinam

ZMA 106.839, paratype (1)

Pimelodus clarias coprophagus Schultz, 1944: 203-206

Venezuela

ZMA 102.124, paratypes (2)

Plotosus papuensis Weber, 1910: 228-229.

New Guinea

ZMA 111.093, syntype (1)

ZMA 111.094, syntype (1)

ZMA 111.095, syntype (1)

ZMA 111.096, syntype (1)

ZMA 111.097, syntype (1)

ZMA 111.098, syntypes (3)

ZMA 111.099, syntype (1)

ZMA 111.100, syntype (1)

ZMA 111.513, syntype (1)

Porochilus obbesi Weber, 1913: 523-524.

New Guinea

ZMA 111.101, syntypes (3)

ZMA 111.102, syntype (1)

Pseudancistrus pediculatus cobrensis Schultz,

1944: 299-301.

Venezuela

ZMA 102.631, paratypes (30)

Pseudeutropius moolenburghae Weber & de Beaufort,

1913: 249-250.

Indonesia

ZMA 112.681, syntypes (6)

Pseudothemiodon apithanos Isbrücker & Nijssen,

1978: 195-203.

Ecuador

ZMA 114.692, paratype (1)

Pseudopimelodus albomarginatus Eigenmann,

1912: 153-154.

(British) Guyana

ZMA 104.667, paratype (1)

Pseudopimelodus nigricauda Mees, 1974: 218-221.

Surinam

ZMA 105.948, paratype (1)

ZMA 105.949, paratype (1)

ZMA 105.951, paratype (1)

Pseudopimelodus villosus butcheri Schultz,

1944: 199-202.

Venezuela

ZMA 102.122, paratypes (3)

Pygidium emanueli emanueli Schultz, 1944:

259-260.

Venezuela

ZMA 102.117, paratypes (2)

Rineloricaria formosa Isbrücker & Nijssen, 1979:

192-197.

Colombia

ZMA 114.922, paratypes (5)

ZMA 114.923, paratypes (2)

ZMA 115.196, paratype (1)

ZMA 115.197, paratype (1)

Rineloricaria heteroptera Isbrücker & Nijssen,

1976: 109-124.

Brazil

ZMA 114.504, paratype (1)

ZMA 114.505, paratype (1)

ZMA 114.506, paratypes (2)

Sovichthys abuelo Schultz, 1944: 191-193.

Venezuela

ZMA 102.132, paratypes (2)

Synodontis matthesi Poll, 1971: 462-465.

Tanzania

ZMA 109.743, holotype

Tatia brunnea Mees, 1974: 84.

Surinam

ZMA 105.526, paratypes (4)

ZMA 105.847, paratypes (5)

ZMA 105.849, paratypes (7)

ZMA 105.851, paratypes (16)

ZMA 105.860, paratype (1)

Tatia concolor Mees, 1974: 84-86.

Surinam

ZMA 106.210, holotype

ZMA 106.209, paratypes (2)

Tatia punctata Mees, 1974: 88-90.

Surinam

ZMA 105.525, paratypes (3)

Tetranesodon conorhynchus Weber, 1913: 546-547.

New Guinea

ZMA 111.084, holotype

Trachycorystes jokeannae Hoedeman, 1961: 138.

French Guiana

ZMA 102.371, holotype

Trachymochlus cupido Hoedeman, 1961: 137.

Surinam

ZMA 102.236, holotype

GOBIESOCIFORMES

Crepidogaster indicus Weber, 1913: 525.

Indonesia

ZMA 104.183, lectotype, designated by Briggs,

1955: 44-45.

Gobiesox sanctimartini Metzelaar, 1919: 151-152.

Antilles

ZMA 104.846, holotype

Gobiesox vittatus Metzelaar, 1922: 140.

Antilles

ZMA 104.168, holotype

Lepadichthys minor Briggs, 1955: 137-138.

Indonesia

ZMA 104.162, holotype

LOPHIIFORMES

LOPHIOIDEI

Lophius papillosus Weber, 1913: 558.

Indonesia

ZMA 112.578, holotype

ANTENNARIOIDEI

Antennarius cryptacanthus Weber, 1913: 564.

Indonesia

ZMA 101.874, syntype (1)

ZMA 101.898, syntype (1)

Dibranchus infranudus de Beaufort, 1962: 228-229.

Indonesia

ZMA 101.877, holotype

Halicmetus ruber marmorata Weber, 1913: 566-567.

Indonesia

ZMA 101.893, syntypes (5)

Haliuetaea fumosa Alcock, 1894: 5-6.

Bay of Bengal

ZMA 102.167, syntype (1)

Haliuetaea indica Annandale & Jenkins, 1910: 19.

India

ZMA 112.980, syntype (1)

Halieutaea stellata vittata Weber, 1913: 566.

Indonesia

ZMA 102.166, syntype (1)

ZMA 102.172, syntypes (5)

ZMA 112.979, syntype (1)

CERATIOIDEI

Linophryne colletti Weber, 1913: 559.

Indonesia

ZMA 101.895, holotype

GADIFORMES

GADOIDEI

Physiculus longifilis Weber, 1913: 178.

Indonesia

ZMA 110.846, syntypes (2)

OPHIDIOIDEI

Dicrolene hubrechtii Weber, 1913: 553.

Indonesia

ZMA 110.840, holotype

Fierasfer sluiteri Weber, 1905: 4.

Indonesia

ZMA 112.679, holotype

Neobythites malayanus Weber, 1913: 554.

Indonesia

ZMA 110.841, syntypes (5)

MACROUROIDEI

Bathygadus dubiosus Weber, 1913: 173-174.

Indonesia

ZMA 114.896, holotype

Coelorhynchus acus Weber, 1913: 160-161.

Indonesia

ZMA 112.682, syntype (1)

ZMA 112.683, syntype (1)

ZMA 112.684, syntype (1)

Coelorhynchus argus Weber, 1913: 161-162.

Indonesia

ZMA 112.468, syntype (1)

ZMA 112.469, syntypes (10)

ZMA 111.498, syntypes (4)

ZMA 111.499, syntypes (8)

Coelorhynchus macrorhynchus Weber, 1913: 162.

Indonesia

ZMA 112.620, holotype

Coryphaenoides sibogae Weber & de Beaufort,
1929: 29.

Indonesia

ZMA 111.489, holotype

Hymenocephalus grimaldii Weber, 1913: 169-170

Indonesia

ZMA 112.567, syntypes (38)

Macrurus fasciatus Weber, 1913: 157-158.

Indonesia

ZMA 110.451, syntype (1)

ZMA 110.452, syntypes (2)

Macrurus heyningeni Weber, 1913: 156-157.

Indonesia

ZMA 111.495, holotype

Macrurus richardi Weber, 1913: 154-156.

Indonesia

ZMA 110.456, syntype (1)

ZMA 110.447, syntypes (18)

ZMA 110.448, syntype (1)

ZMA 110.449, syntypes (3)

ZMA 110.464, syntype (1)

Macrurus tydemani Weber, 1913: 158-160.

Indonesia

ZMA 111.490, syntype (1)

ZMA 111.491, syntype (1)

ZMA 111.492, syntype (1)

ZMA 111.493, syntypes (8)

ZMA 111.494, syntype (1)

ATHERINIFORMES

EXOCOETOIDEI

Cypsilurus bilobatus Weber & de Beaufort,

1922: 185-186.

New Guinea

ZMA 109.669, holotype

Cypsilurus brevis Weber & de Beaufort,

1922: 192-193.

Indonesia

ZMA 109.675, syntypes (3)

Hemiramphus archipelagicus Collette & Parin,

1978: 732-737.

Gulf of Siam

ZMA 114.585, paratype (1)

- ZMA 114.586, paratype (1)
- ZMA 114.587, paratype (1)
- ZMA 114.588, paratype (1)
- ZMA 114.589, paratypes (2)
- ZMA 114.600, paratype (1)
- ZMA 114.601, paratypes (5)
- ZMA 114.602, paratypes (4)

Hemiramphus caudovittatus Weber, 1908: 229-230.

New Guinea

- ZMA 111.488, syntype (1)

Hemiramphus convexus Weber & de Beaufort,

1922: 159-161.

Indonesia

- ZMA 109.671, syntypes (2)
- ZMA 109.672, syntype (1)

Hemiramphus orientalis Weber, 1894: 427.

Indonesia

- ZMA 104.373, syntypes (3)
- ZMA 104.374, syntypes (15)
- ZMA 104.375, syntypes (9)

Hemiramphus (Zenarchopterus) kampeni Weber,

1913: 554.

New Guinea

- ZMA 111.487, syntypes (3)

Hemiramphus (Zenarchopterus) novaeguineae Weber,

1913: 553-554.

New Guinea

- ZMA 111.479, syntypes (10)
- ZMA 111.480, syntype (1)
- ZMA 111.481, syntype (1)
- ZMA 111.482, syntypes (25)

ZMA 111.483, syntypes (5)

Hemirhamphus knysnaensis Smith, 1933: 144-147.

South Africa

ZMA 114.582, syntypes (6)

Hemirhamphus peitaihoensis van Dam, 1926: 342.

China

ZMA 109.165, syntypes (2)

Nomorhamphus celebensis Weber & de Beaufort,

1922: 141-142.

Indonesia

ZMA 104.376, syntypes (4)

Zenarchopterus beauforti Mohr, 1926: 259-260.

Malaya

ZMA 101.820, syntypes (2)

CYPRINODONTOIDEI

Acanthophaelus bifurcus Eigenmann, 1909: 52-53.

(British) Guyana

ZMA 109.208, paratype (1)

Adrianichthys kruyti Weber, 1913: 205-206.

Indonesia

ZMA 100.643, holotype

Austrofundulus stagnalis Schultz, 1949: 88-89.

Venezuela

ZMA 102.130, paratypes (5)

Cyprinodon salinus Miller, 1943: 69-78.

U.S.A., California

ZMA 102.216, paratypes (35)

Cyprinodon variegatus artifrons Hubbs, 1936:
223-225.

Mexico

ZMA 101.006, paratypes (5)

Empetrichthys latos latos Miller, 1948: 103-104.

U.S.A., Nevada

ZMA 102.240, paratypes (15)

Garmanella pulchra Hubbs, 1936: 219-223.

Mexico

ZMA 102.215, paratypes (10)

Haplochilus celebensis Weber, 1894: 426.

Indonesia

ZMA 100.567, syntypes (26)

ZMA 112.585, syntypes (19)

Haplochilus sarasinorum Popta, 1905: 239-247.

Indonesia

ZMA 100.648, syntype (1)

Haplochilus timorensis Weber & de Beaufort,

1922: 373-374.

Indonesia

ZMA 100.571, syntypes (8)

Rachovia hummelincki de Beaufort, 1940: 4.

Venezuela

ZMA 100.401, lectotype, designated by

Taphorn & Thomerson, 1978: 399.

ZMA 104.445, paralectotypes (3)

Rivulus agilae Hoedeman, 1954: 202-203.

Surinam

ZMA 100.448a, holotype

ZMA 100.448b, paratype (1)

ZMA 100.449, paratypes (8)

Rivulus cryptocallus Seegers & Huber, 1981:
170-176.

Martinique

ZMA 112.485, paratypes (12)

ZMA 112.486, paratypes (8)

ZMA 112.487, paratypes (4)

ZMA 112.488, paratypes (4)

ZMA 112.497, paratypes (7)

ZMA 112.498, paratypes (2)

Rivulus limoncochae Hoedeman, 1962: 145-150.

Ecuador

ZMA 100.339a, holotype

ZMA 100.339b, paratypes (2)

ZMA 101.504, paratypes (22)

Rivulus manaensis Hoedeman, 1961: 61-63.

French Guiana

ZMA 102.252a, holotype

ZMA 102.252b, paratypes (3)

Rivulus marmoratus bonairensis Hoedeman, 1958:

117-121.

Antilles

ZMA 100.436, holotype

ZMA 113.369, paratypes (2)

ZMA 100.385, paratypes (2)

ZMA 100.386, paratypes (3)

ZMA 100.387, paratypes (3)

ZMA 100.388, paratypes (3)

ZMA 100.389, paratype (1)

ZMA 100.404, paratypes (3)

ZMA 100.429, paratype (1)

ZMA 100.432, paratypes (2)

ZMA 100.433, paratype (1)

ZMA 100.435, paratypes (3)

ZMA 100.437, paratypes (2)

ZMA 100.380, paratype (1)

ZMA 100.384, paratypes (2)

Xenopoecilus poptae Weber & de Beaufort, 1922: 379.

Indonesia

ZMA 100.644, syntypes (7)

Xiphophorus pygmaeus Hubbs & Gordon, 1943: 31-33.

Mexico

ZMA 109.800, paratypes (5)

ATHERINOIDEI

Atherinichthys nouhuysi Weber, 1910: 229-230.

New Guinea

ZMA 103.175, lectotype, designated by Hoedeman,
1960: 212-213.

ZMA 103.176, paralectotypes (10)

ZMA 103.177, paralectotype (1)

ZMA 103.178, paralectotypes (8)

ZMA 103.179, paralectotype (1)

ZMA 103.180, paralectotype (1)

ZMA 103.181, paralectotypes (9)

Bedotia geayi Pellegrin, 1907: 205-206.

Madagascar

ZMA 112.989, syntypes (2)

Chilatherina axelrodi Allen, 1980: 48-49, 54-55.

New Guinea

ZMA 115.400, paratypes (6)

Craterocephalus annator Whitley, 1938: 226.

New Guinea

ZMA 113.080, paratypes (2)

Craterocephalus dalhousiensis Ivantsoff & Glover,

1974: 88-98.

Australia

ZMA 113.370, paratypes (6)

Glossolepis incisus Weber, 1908: 241-242.

New Guinea

ZMA 103.163, lectotype, designated by Hoedeman,
1960: 213.

ZMA 103.165, paralectotypes (6)

Glossolepis wanamensis Allen & Kailola, 1979: 39-44

New Guinea

ZMA 116.050, paratypes (2)

Melanorhinus boekei Metzelaar, 1919: 38.

Antilles

ZMA 100.179, syntypes (6)

Melanotaenia dumasi Weber, 1908: 240-241.

New Guinea

ZMA 103.112, lectotype, designated by Hoedeman,
1960: 213.

ZMA 103.113, paralectotypes (2)

Melanotaenia exquisita Allen, 1978: 97.

Australia

ZMA 115.745, paratypes (7)

Melanotaenia gracilis Allen, 1978: 98.

Australia

ZMA 115.747, paratypes (2)

Melanotaenia herbertaxelrodi Allen, 1980: 31-33,
68-71, 74.

New Guinea

ZMA 116.440, paratypes (6)

Melanotaenia maculata Weber, 1908: 239-240.

New Guinea

ZMA 103.067, lectotype, designated by Hoedeman,
1960: 213.

ZMA 110.168, paralectotypes (6)

Melanotaenia monticola Allen, 1980: 43-50.

New Guinea

ZMA 115.402, paratypes (7)

Melanotaenia multisquamata Weber & de Beaufort,
1922: 290.

New Guinea

ZMA 114.469, syntype (1)

ZMA 103.048, syntypes (24)

Melanotaenia neglecta Rendahl, 1922: 179-182.

Australia

ZMA 115.168, paratype (1)

Melanotaenia ogilbyi Weber, 1910: 230-232.

New Guinea

ZMA 103.110, lectotype, designated by Hoedeman,
1960: 213-214.

ZMA 103.111, paralectotypes (2)

Melanotaenia parkinsoni Allen, 1980: 43-50.

New Guinea

ZMA 115.401, paratypes (2)

Melanotaenia pimaensis Allen, 1980: 72-79.

- New Guinea
ZMA 116.439, paratypes (5)
- Melanotaenia pygmaea Allen, 1978: 99.
Australia
ZMA 115.746, paratypes (2)
- Popondetta connieae Allen, 1981: 43-46.
New Guinea
ZMA 116.438, paratypes (10)
- Pseudomugil gertrudae Weber, 1911: 23-25.
Indonesia
ZMA 103.196, paralectotypes (5)
Lectotype designated by Hoedeman, 1960: 214.
- Pseudomugil inconspicuus Roberts, 1978: 53-54.
New Guinea
ZMA 114.436, paratypes (3)
- Pseudomugil novaeguineae Weber, 1908: 232-233.
New Guinea
ZMA 103.197, lectotype, designated by Hoedeman,
1960: 214.
ZMA 110.175, paralectotypes (2)
- Pseudomugil paludicola Allen & Moore, 1981: 105-108
New Guinea
ZMA 115.399, paratypes (25)
- Rhadinocentrus ornatus Regan, 1914: 280-281.
Australia
ZMA 115.168, syntype (1)
- Rhombatractus affinis Weber, 1908: 234-235.
New Guinea

ZMA 103.157, lectotype, designated by Hoedeman,
1960: 214.

ZMA 110.154, paralectotypes (13)

ZMA 103.158, paralectotypes (5)

ZMA 103.159, paralectotypes (39)

Rhombatractus catherinae de Beaufort, 1910: 250-252

New Guinea

ZMA 103.143, lectotype, designated by Hoedeman,
1960: 214-215.

ZMA 103.144, paralectotypes (10)

ZMA 103.145, paralectotypes (146)

ZMA 110.153, paralectotype (1)

ZMA 110.155, paralectotypes (7)

Rhombatractus crassispinosus Weber, 1913: 567-568.

New Guinea

ZMA 103.104, lectotype, designated by Hoedeman,
1960: 215.

ZMA 103.105, paralectotypes (5)

ZMA 103.106, paralectotypes (12)

ZMA 103.107, paralectotypes (4)

ZMA 103.108, paralectotypes (2)

ZMA 110.156, paralectotype (1)

ZMA 110.161, paralectotypes (8)

Rhombatractus fasciatus Weber, 1913: 565-567.

New Guinea

ZMA 103.103, lectotype, designated by Hoedeman,
1960: 215.

ZMA 103.097, paralectotype (1)

ZMA 103.100, paralectotypes (2)

ZMA 103.101, paralectotype (1)

Rhombatractus kochi Weber, 1908: 237-238.

New Guinea

ZMA 103.151, lectotype, designated by Hoedeman,
1960: 215.

ZMA 103.128, paralectotypes (6)

ZMA 110.162, paralectotypes (3)

Rhombatractus lorentzi Weber, 1908: 236-237.

New Guinea

ZMA 103.146, lectotype, designated by Hoedeman,
1960: 216.

ZMA 110.157, paralectotypes (24)

Rhombatractus patoti Weber, 1907: 403-404.

Indonesia

ZMA 103.199, lectotype, designated by Hoedeman,
1960: 216.

ZMA 103.156, paralectotypes (3)

Rhombatractus praecox Weber & de Beaufort,

1922: 298-299.

New Guinea

ZMA 103.142, lectotype, designated by Hoedeman,
1960: 216.

ZMA 103.051, paralectotypes (35)

ZMA 110.165, paralectotypes (20)

Rhombatractus senckenbergianus Weber, 1911: 25-27.

Indonesia

ZMA 103.136, paralectotype (1)

Lectotype designated by Hoedeman, 1960: 216.

Rhombatractus sentaniensis Weber, 1908: 235-236.

New Guinea

ZMA 103.093, lectotype, designated by Hoedeman,
1960: 216-217.

ZMA 110.164, paralectotypes (65)

Rhombatractus vanheurni Weber & de Beaufort,
1922: 299-300.

New Guinea

ZMA 103.137, lectotype, designated by Hoedeman
1960: 217.

ZMA 103.046, paralectotypes (77)

ZMA 103.138, paralectotypes (20)

ZMA 103.162, paralectotypes (7)

ZMA 103.166, paralectotypes (11)

Telmatherina abendanoni Weber, 1913: 208-209.

Indonesia

ZMA 103.195, lectotype, designated by Hoedeman
1960: 217.

ZMA 110.176, paralectotype (1)

Telmatherina bonti Weber & de Beaufort,

1922: 280-281.

Indonesia

ZMA 110.177, syntype (1)

ZMA 110.178, syntype (1)

BERYCIFORMES

STEPHANOBERYCOIDEI

Melamphaes malayanus Weber, 1913: 187-188.

Indonesia

ZMA 112.432, syntype (1)

ZMA 112.433, syntype (1)

Melamphaes polylepis Ebeling, 1962: 43-46.

Indonesia

ZMA 100.442, paratype (1)

BERYCOIDEI

Leiogaster melanopus Weber, 1913: 180.

Indonesia

ZMA 110.826, lectotype, designated by Karrer,
1973: 229-230.

ZMA 109.297, paralectotype (1)

ZMA 110.823, paralectotypes (3)

ZMA 110.824, paralectotypes (4)

ZMA 110.825, paralectotypes (11)

ZEIFORMES

Antigonia malayana Weber, 1913: 299-300.

Indonesia

ZMA 113.012, syntypes (5)

ZMA 113.092, syntypes (6)

Cyttomimus affinis Weber, 1913: 298.

Indonesia

ZMA 112.445, holotype

Cyttula macropus Weber, 1913: 411-412.

Indonesia

ZMA 102.357, syntype (1)

ZMA 102.358, syntypes (4)

GASTEROSTEIFORMES

AULOSTOMOIDEI

Macrorhamphosus schoteli Weber, 1909: 76-77.

Uruguay

ZMA 113.006, holotype

SYNGNATHOIDEI

Apterygocampus epinnulatus Weber, 1913: 116.

Indonesia

ZMA 112.621, holotype

Doryichthys caudocarinatus Weber, 1908: 229.

New Guinea

ZMA 112.676, holotype

Doryrhamphus brevidorsalis de Beaufort, 1913: 103.

Indonesia

ZMA 109.184, holotype

Hippocampus spinosissimus Weber, 1913: 120.

Indonesia

ZMA 104.655, syntypes (2)

Ichthyocampus kampeni Weber, 1913: 114-115.

Indonesia

ZMA 112.596, syntype (1)

ZMA 112.597, syntypes (4)

ZMA 112.598, syntype (1)

ZMA 112.599, syntype (1)

ZMA 112.600, syntype (1)

Nannocampus weberi Duncker, 1915: 99.

Indonesia

ZMA 104.659, holotype

Solenostomus armatus Weber, 1913: 103-105.

Indonesia

ZMA 112.629, syntypes (2)

Syngnathus corrugatus Weber, 1913: 112-113.

Indonesia

ZMA, holotype, not traced

Syngnathus crenulatus Weber, 1913: 109-110.

Indonesia

ZMA 112.627, syntypes (2)

Syngnathus dunckeri Metzelaar, 1919: 28.

Antilles

ZMA 113.100, syntypes (2)

ZMA 113.101, syntypes (9)

Syngnathus punctatus Weber, 1913: 113.

Indonesia

ZMA 112.623, holotype

Syngnathus uncinatus Weber, 1913: 110-111.

Indonesia

ZMA 112.622, holotype

SCORPAENIFORMES

SCORPAENOIDEI

Cocotropus dezwaani Weber & de Beaufort, 1915:

11-12.

Indonesia

ZMA 100.169, holotype

Cocotropus obbesi Weber, 1913: 503.

Indonesia

ZMA 110.243, holotype

Cottunculus gyrinoides Weber, 1913: 505-506.

Indonesia

ZMA 108.188, syntype (1)

ZMA 108.189, syntype (1)

Paracentropogon aeglefinus Weber, 1913: 500-501.

Indonesia

ZMA 110.234, syntypes (2)

ZMA 110.235, syntypes (4)

ZMA 110.236, syntypes (5)

ZMA 110.237, syntype (1)

ZMA 110.240, syntypes (2)

Paracentropogon cynocephalus Weber, 1913: 501.

Indonesia

ZMA 110.231, syntype (1)

ZMA 110.232, syntypes (2)

ZMA 110.233, syntype (1)

Paracentropogon pleurostigma Weber, 1913: 499-500.

New Guinea

ZMA 110.229, syntype (1)

ZMA 110.230, syntypes (6)

Peristedion nierstraszi Weber, 1913: 514-515.

Indonesia

ZMA 112.441, syntypes (2)

ZMA 112.442, syntype (1)

Peristedion undulatum Weber, 1913: 513-514.

Indonesia

ZMA 112.440, holotype

Prosopodasys zonatus Weber, 1913: 502-503.

Indonesia

ZMA 110.238, syntype (1)

ZMA 110.239, syntype (1)

Scorpaena albofasciata Metzelaar, 1919: 145.

Antilles

ZMA 110.242, syntype (1)

Scorpaena tredecimspinosa Metzelaar, 1919: 146.

Antilles

ZMA 113.332, lectotype, designated by Eschmeyer

1969: 86.

ZMA 110.241, paralectotypes (2)

Scorpaenopsis simulata de Beaufort, 1962: 19-21.

Indonesia

ZMA 110.244, holotype

PLATYCEPHALOIDEI

Platycephalus grandisquamis Weber, 1913: 509-510.

New Guinea

ZMA 112.434, syntypes (3)

Platycephalus horai de Beaufort, 1956: 83-85.

New Guinea

ZMA 112.435, syntypes (2)

Platycephalus macrocephalus Weber, 1913: 508-509.

Indonesia

ZMA 112.436, syntype (1)

ZMA 112.437, syntypes (4)

ZMA 112.438, syntype (1)

ZMA 112.439, syntype (1)

PERCIFORMES

PERCOIDEI

Abudefduf filifer Weber, 1913: 348-349.

Indonesia

ZMA 109.435, holotype

Abudefduf hemicyaneus Weber, 1913: 351.

Indonesia

ZMA 109.437, syntypes (3)

Aequidens potaroensis Eigenmann, 1912: 490-491.

(British) Guyana

ZMA 111.427, paratypes (2)

Ambassis confinis confinis Weber, 1913: 577-579.

New Guinea

ZMA 112.396, syntype (1)

ZMA 112.397, syntype (1)

ZMA 112.398, syntypes (2)

ZMA 112.399, syntypes (5)

Ambassis confinis occidentalis Weber & de Beaufort,
1929: 240.

New Guinea

ZMA 109.467, syntypes (2)

ZMA 109.469, syntypes (2)

ZMA 112.399, syntypes (5)

Ambassis interrupta reticulatus Weber, 1913:
574-576.

New Guinea

ZMA 112.388, syntypes (5)

ZMA 112.389, syntypes (11)

ZMA 112.390, syntypes (2)

ZMA 112.391, syntypes (3)

ZMA 112.392, syntypes (34)

ZMA 112.393, syntypes (5)

Anisochaetodon trivirgatus Weber & de Beaufort,
1936: 101-103.

Indonesia (erroneous, probably western Atlantic)

ZMA 113.095, holotype

Apistogramma cacatuoides Hoedeman, 1951: 1-4

Surinam

ZMA 100.033a, holotype

ZMA 100.033b, paratype (1)

Apistogramma nijsseni Kullander, 1979: 937-945.

Peru

ZMA 116.054, paratype (1)

Apistogramma resticulosa Kullander, 1980: 157-164

Brazil

ZMA 116.177, holotype

ZMA 114.270, paratypes (3)

ZMA 114.277, paratype (1)

Apogon argyrogaster Weber, 1909: 159-160.

New Guinea

ZMA 101.075, syntypes (2)

Apogon beauforti Weber, 1908: 246-247.

New Guinea

ZMA 101.120, syntypes (49)

Apogon bilaciniatus Weber, 1909: 161-162.

Indonesia

ZMA 101.280, syntypes (4)

Apogon brevicaudatus Weber, 1909: 158-159.

Indonesia

ZMA 101.127, syntypes (2)

Apogon dammermani Weber & de Beaufort, 1929: 338.

New Guinea

ZMA 101.144, holotype

Apogon gjellerupi Weber & de Beaufort, 1929: 285-286.

New Guinea

ZMA 101.164, syntypes (7)

ZMA 101.165, syntypes (2)

ZMA 101.166, syntype (1)

ZMA 101.167, syntypes (3)

ZMA 101.168, syntypes (2)

ZMA 101.169, syntypes (9)

ZMA 101.333, syntype (1)

Apogon heurni Weber & de Beaufort, 1929: 286-287

New Guinea

ZMA 101.172, syntypes (2)

ZMA 101.173, syntypes (17)

Apogon ocellatus Weber, 1913: 231-232.

Indonesia

ZMA 101.255, syntypes (2)

ZMA 101.259, syntype (1)

ZMA 101.273, syntype (1)

Apogon sandei Weber, 1908: 247.

New Guinea

ZMA 101.300, syntypes (5)

Apogon trifasciatus Weber, 1913: 580-581.

New Guinea

ZMA 101.319, syntypes (3)

ZMA 101.322, syntype (1)

ZMA 101.323, syntypes (9)

Apogon tubulatus Weber, 1909: 160-161.

New Guinea

ZMA 101.328, syntype (1)

ZMA 101.329, syntype (1)

ZMA 101.330, syntype (1)

Apogon wichmanni Weber, 1908: 248-249.

New Guinea

ZMA 101.335, syntypes (5)

ZMA 101.336, syntypes (8)

ZMA 101.337, syntype (1)

ZMA 101.338, syntypes (2)

Bathyclupea malayana Weber, 1913: 193-194.

Indonesia

ZMA 112.443, syntype (1)

ZMA 112.444, syntype (1)

Cheilodipterus subulatus Weber, 1909: 164-165.

Indonesia

ZMA 101.379, holotype

Chelidoperca margaritifera Weber, 1913: 207-208.

Indonesia

ZMA 101.029, holotype

Chromis natalensis Weber, 1897: 147.

South Africa

ZMA 101.440, lectotype, designated by Matthes
1964: 181.

ZMA 101.441, paralectotypes (5)

Chromis philander Weber, 1897: 148-149.

South Africa

ZMA 100.175, lectotype, designated by Matthes
1964: 182.

ZMA 111.417, paralectotypes (8)

ZMA 111.418, paralectotypes (3)

ZMA 111.419, paralectotypes (28)

ZMA 111.420, paralectotype (1)

ZMA 111.421, paralectotypes (11)

Chromis retrofasciatus Weber, 1913: 359-360.

Indonesia

ZMA 111.416, holotype

Crenicichla alta Eigenmann, 1912: 516-517.

(British) Guyana
ZMA 100.244, paratype (1)

Foa fistulosa Weber, 1909: 162.
Indonesia
ZMA, syntypes (9), not traced

Foa longimana Weber, 1909: 148-149.
Indonesia
ZMA 112.203, holotype

Helotes lorentzi Weber, 1910: 236-237.
New Guinea
ZMA 112.446, syntype (1)
ZMA 112.447, syntype (1)

Heterogramma ortmanni Eigenmann, 1912: 506-507.
(British) Guyana
ZMA 114.895, paratypes (2)

Lethrinus carinatus Weber, 1913: 289-291.
Indonesia and New Guinea
ZMA 111.064, syntype (1)
ZMA 112.619, syntype (1)

Nematochromis annae Weber, 1913: 265.
Indonesia
ZMA 112.450, syntype (1)
ZMA 112.451, syntype (1)

Pomacentrus analis xanthus Metzelaar, 1919: 98-99.
Antilles
ZMA 100.660, holotype

Pomacentrus fasciatus intermedia Weber,
1913: 340-341.

Indonesia

ZMA 114.611, holotype

ZMA 114.612, paratypes (2)

Pomacentrus nigromanus Weber, 1913: 338-339.

Indonesia

ZMA 112.626, holotype

Pristipoma boschmae Metzelaar, 1919: 83-84.

Antilles

ZMA 112.928, holotype

Pteranthias longimanus Weber, 1913: 209-210.

Indonesia

ZMA 113.364, lectotype, designated by Randall,
1980: 149.

ZMA 100.475, paralectotype (1)

ZMA 100.476, paralectotype (1)

ZMA 100.477, paralectotypes (2)

ZMA 100.478, paralectotype (1)

Rhabdamia clupeiiformes Weber, 1909: 165-166.

Indonesia

ZMA 112.204, syntypes (2)

ZMA 112.205, syntypes (10)

ZMA 112.207, syntype (1)

Rhabdamia cypselurus Weber, 1909: 167-168.

Indonesia

ZMA 112.206, syntypes (13)

Scolopsis dubiosus Weber, 1913: 282-283.

Indonesia

ZMA 114.483, syntype (1)

ZMA 114.484, syntype (1)

Scolopsis elongatus Weber, 1913: 281-282.

Indonesia

ZMA 113.093, syntypes (3)

Serranus dewegeri Metzelaar, 1919: 52-53.

Venezuela

ZMA 113.104, syntype (1)

Siphamia tubifer Weber, 1909: 168-169.

Indonesia

ZMA 112.200, syntypes (3)

Sphenanthias sibogae Weber, 1913: 211-212.

Indonesia

ZMA 112.568, syntypes (4)

Synagrops malayanus Weber, 1913: 196-197.

Indonesia

ZMA 112.452, syntype (1)

ZMA 112.453, syntype (1)

ZMA 112.454, syntype (1)

Therapon habbema Weber, 1910: 234-236.

New Guinea

ZMA 112.455, syntypes (7)

ZMA 112.456, syntypes (22)

ZMA 112.457, syntypes (2)

ZMA 112.458, syntype (1)

ZMA 112.459, syntypes (2)

Therapon obtusifrons Mees & Kailola, 1977: 63-68

New Guinea

ZMA 114.203, holotype

ZMA 112.781, paratypes (13)

Therapon roemeri Weber, 1910: 233-234

New Guinea

ZMA 104.730, syntype (1)

ZMA 104.731, syntype (1)

Toxotes lorentzi Weber, 1910: 232-233.

New Guinea

ZMA 112.449, lectotype, designated by Allen,
1978: 371-372.

ZMA 114.451, paralectotype (1)

Umbrina gracilicirrhus Metzelaar, 1919: 72.

Venezuela

ZMA 113.103, holotype

MUGILOIDEI

Aeschrithys goldiei Macleay, 1883: 2-6.

New Guinea

ZMA 115.795, paratype (1)

Myxus calancae de Beaufort, 1940: 6.

Venezuela

ZMA 112.930, syntypes (6)

POLYNEMOIDEI

Polynemus longipectoralis Weber & de Beaufort,
1922: 213-214.

Indonesia

ZMA 112.570, holotype

LABROIDEI

Callyodon verweyi de Beaufort, 1940: 298-299.

Indonesia

ZMA 112.286, holotype

Cheilinus cingulatus Weber, 1913: 365-366.

Indonesia

ZMA 111.496, syntype (1)

ZMA 111.497, syntype (1)

Doratonotus boekei Metzelaar, 1919: 107-108.

Antilles

ZMA 113.102, syntype (1)

Parabodianus rutteni de Beaufort, 1940: 51.

Indonesia

ZMA 113.094, holotype

Pseudojulis trifasciatus Weber, 1913: 380-381

Indonesia

ZMA 112.465, syntypes (2)

ZMA 112.466, syntype (1)

ZMA 112.467, syntype (1)

TRACHINOIDEI

Apodocreedia vanderhorsti de Beaufort, 1948:
476-478.

Mozambique

ZMA 112.581, syntypes (2)

Chalixodytes tauensis Schultz, 1943: 263-264.

Samoa

ZMA 112.978, paratypes (2)

Chiasmodon braueri Weber, 1913: 147-148.

Indonesia

ZMA 112.462, holotype

Crystalloodytes cookei enderburyensis Schultz,
1943: 264-266.

Phoenix Islands

ZMA 110.014, paratypes (2)

Neopercis striolata Weber, 1913: 520-521.

Indonesia

ZMA 112.463, holotype

Odontonema kerberti Weber, 1913: 149.

Indonesia

ZMA 104.006, holotype

Opistognathus versluysi Weber, 1913: 261-262.

Indonesia

ZMA 112.990, syntype (1)

ZMA 112.628, syntype (1)

BLENNIOIDEI

Acanthemblemaria spinosa Metzelaar, 1919: 159

Antilles

ZMA 102.156, holotype

Alticus semicrenatus Chapman, in de Beaufort,
1951: 270-272.

New Guinea

ZMA 112.464, paratypes (2)

Alticus triangulus Chapman, in de Beaufort,
1951: 269-270.

Indonesia

ZMA 112.903, paratype (1)

Andamia cyclocheilus Weber, 1909: 143-144.

Indonesia

ZMA 109.061, holotype

Blennius niger Metzelaar, 1919: 290.

Mauritania

ZMA 102.170, holotype

Blennius rioudourensis Metzelaar, 1919: 291.

Mauritania

ZMA 102.173, holotype

Brannerella sluiteri Metzelaar, 1919: 155-156.

Antilles

ZMA 112.908, syntype (1)

Enchelyurus flavipes nigerrima Weber, 1913: 545

Indonesia

ZMA 112.678, syntypes (2)

Gibbonsia metzi ferventer Hubbs, 1952: 124-126.

Mexico

ZMA 100.215, paratype (1)

Haliopsis malayanus Weber, 1909: 145-146.

Indonesia

ZMA 112.577, syntypes (8)

Histioclinus veliger Metzelaar, 1919: 157-158.

Antilles

ZMA 102.174, syntypes (11)

Petroscirtes fluctuans Weber, 1909: 146-147

Indonesia

ZMA 109.338, syntype (1)

ZMA 109.339, syntype (1)

ZMA 109.340, syntype (1)

Petroscirtes kochi Weber, 1908: 263.

New Guinea

ZMA 109.102, syntypes (2)

Salarias bleekeri Chapman, in de Beaufort,
1951: 338-340.

Indonesia

ZMA 112.902, paratypes (7)

ZMA 109.115, paratypes (2)

Salarias crenulatus Weber, 1909: 144-145.

Indonesia

ZMA 109.062, syntype (1)

ZMA 109.063, syntype (1)

Tripterygion callionymi Weber, 1909: 147-148.

Indonesia

ZMA 112.501, syntypes (2)

ZMA 112.502, syntype (1)

ZMA 112.503, syntypes (2)

ZMA 112.504, syntype (1)

ZMA 112.505, syntype (1)

ZMA 112.506, syntype (1)

Tripterygion fasciatum Weber, 1909: 148-149.

Indonesia

ZMA 112.507, syntype (1)

ZMA 112.508, syntypes (2)

Tripterygion gymnauchen Weber, 1909: 149.

Indonesia

ZMA 112.509, holotype

CALLIONYMOIDEI

Callionymus annulatus Weber, 1913: 523-524.

Indonesia

ZMA 112.574, syntype (1)

ZMA 112.575, syntype (1)

Callionymus boekei Metzelaar, 1919: 149-150.

Antilles

ZMA 112.907, holotype

Callionymus sanctieustatii Metzelaar, 1919: 150-151

Antilles

ZMA 112.906, holotype

GOBIOIDEI

Bostrychus aruensis Weber, 1911: 44.

Indonesia

ZMA 110.942, syntypes (2)

Bostrychus zonatus Weber, 1908: 259.

New Guinea

ZMA 111.764, syntypes (12)

ZMA 111.765, syntypes (2)

Callogobius centrolepis Weber, 1909: 157.

Indonesia

ZMA 111.745, holotype

Dormitator lophocephalus Hoedeman, 1951: 1-5

Surinam

ZMA 100.061a, holotype

ZMA 100.061b, paratype (1)

Eleotris aruensis Weber, 1911: 33.

Indonesia

ZMA 110.973, syntypes (2)

Eleotris fimbriatus Weber, 1908: 254-255.

New Guinea

ZMA 111.814, holotype

Eleotris herwerdenii Weber, 1910: 238-240.

New Guinea

ZMA 112.931, syntype (1)

ZMA 112.932, syntype (1)

ZMA 112.933, syntypes (2)

ZMA 112.934, syntypes (2)

ZMA 112.936, syntype (1)

ZMA 112.937, syntype (1)

ZMA 112.938, syntypes (5)

Eleotris heterodon Weber, 1908: 255-256.

New Guinea

ZMA 112.072, syntype (1)

ZMA 112.073, syntype (1)

ZMA 112.074, syntypes (7)

Eleotris mertoni Weber, 1911: 33-34.

Indonesia

ZMA 112.659, syntype (1)

Eleotris nesolepis Weber, 1908: 256-257.

New Guinea

ZMA 110.970, syntypes (3)

ZMA 110.971, syntypes (11)

Evermannichthys metzelaari Hubbs, 1923: 1-2.

Antilles

ZMA 103.169, syntypes (6)

Eviota gymnocephalus Weber, 1913: 452-453.

Indonesia

ZMA 110.965, lectotype, designated by Lachner
& Karnella, 1980: 75.

ZMA 110.957, paralectotypes (5)

ZMA 110.958, paralectotypes (5)
 ZMA 110.959, paralectotype (1)
 ZMA 110.960, paralectotypes (4)
 ZMA 110.961, paralectotype (1)
 ZMA 110.962, paralectotypes (4)
 ZMA 110.963, paralectotype (1)
 ZMA 110.964, paralectotype (1)
 ZMA 110.966, paralectotypes (5)
 ZMA 110.967, paralectotype (1)
 ZMA 110.968, paralectotypes (2)

Gobiosoma horsti Metzelaar, 1922: 139.

Antilles

ZMA 101.446, syntypes (2)

Gobius alcockii Annandale, 1906: 201-202.

India

ZMA 114.487, syntypes (3)

Gobius amadi Weber, 1913: 211.

Indonesia

ZMA 112.664, syntypes (9)

Gobius beauforti Weber, 1908: 261.

New Guinea

ZMA 110.943, syntype (1)

ZMA 110.944, syntypes (2)

Gobius bicirrhosus Weber, 1894: 412.

Indonesia

ZMA 110.979, syntypes (8)

Gobius cavifrons Weber, 1909: 152-153.

Indonesia

ZMA 112.616, syntypes (43)

Gobius curacao Metzelaar, 1919: 136.

Antilles

ZMA 111.890, syntypes (25)

Gobius dewaali Weber, 1897: 145-146.

South Africa

ZMA 103.238, lectotype, designated by Matthes,
1964: 181.

ZMA 103.239, paralectotypes (5)

ZMA 103.240, paralectotypes (11)

ZMA 103.272, paralectotype (1)

Gobius hipoliti Metzelaar, 1922: 138-139.

Antilles

ZMA 110.974, holotype

Gobius labiatus Weber, 1913: 470-471.

Indonesia

ZMA 112.904, syntype (1)

Gobius longimanus Weber, 1909: 154-155.

Indonesia

ZMA 110.978, holotype

Gobius matanensis Weber, 1913: 209-211.

Indonesia

ZMA 112.665, syntypes (6)

ZMA 112.666, syntypes (5)

Gobius mertoni Weber, 1911: 37-38.

Indonesia

ZMA 112.660, syntype (1)

Gobius notonema Weber, 1909: 154.

Indonesia

ZMA 112.905, holotype

Gobius ophthalmicus Weber, 1909: 150.

Indonesia

ZMA 111.886, syntypes (3)

Gobius oyensi de Beaufort, 1913: 137-138.

Indonesia

ZMA 108.049, syntype (1)

ZMA 110.110, syntype (1)

ZMA 113.263, syntype (1)

Gobius reticularis Weber, 1911: 39.

Indonesia

ZMA 112.661, syntype (1)

Gobius roemeri Weber, 1911: 39-40.

Indonesia

ZMA 110.976, syntype (1)

Gobius rouxi Weber, 1911: 40-41.

Indonesia

ZMA 112.662, syntypes (2)

ZMA 112.663, syntypes (2)

Gobius scapulopunctatus de Beaufort, 1912: 137-139.

New Guinea

ZMA 111.885, syntypes (2)

Gobius senegambiensis Metzelaar, 1919: 282.

Mauritania

ZMA 110.991, holotype

ZMA 104.124, paratypes (6)

Gobius stigmatophorus de Beaufort, 1912: 136-137.

New Guinea

ZMA 111.983, holotype

Gobius triangularis Weber, 1909: 150-151.

Indonesia

ZMA 111.562, syntypes (2)

Gobius uronema Weber, 1909: 153-154.

Indonesia

ZMA 111.336, syntypes (2)

Gobius villosus Weber, 1909: 151-152.

Indonesia

ZMA 110.945, holotype

Microgobius lacustris Herre, 1927: 93-94.

Philippines

ZMA 115.798, syntypes (5)

Oxyeleotris urophthalmus novaeguinea Koumans,

1936: 130.

New Guinea

ZMA 104.113, syntypes (7)

Oxyurichthys jaarmani Weber, 1913: 601.

New Guinea

ZMA 110.977, holotype

Oxyurichthys laterisquamatus Weber, 1908: 261-262

New Guinea

ZMA 116.477, syntypes (2)

Oxyurichthys nijsseni Menon & Govindan, 1976:

13-15.

India

ZMA 115.270, paratypes (2)

Parioglossus borneensis Koumans, 1953: 363-364.

Indonesia

ZMA 110.139, holotype
ZMA 110.140, paratype (1)

Periophthalmus cantonensis novaeguineensis

Eggert, 1935: 61.

New Guinea

ZMA 112.943, syntype (1)
ZMA 112.944, syntypes (2)
ZMA 112.945, syntypes (22)

Periophthalmus dipus angustiformis Eggert,

1935: 89-90.

Indonesia

ZMA 113.218, syntypes (2)

Periophthalmus vulgaris vulgaris Eggert,

1935: 81-83.

New Guinea

ZMA 100.077, paratypes (2)
ZMA 100.080, paratypes (3)
ZMA 100.101, paratypes (3)
ZMA 109.812, paratype (1)
ZMA 110.082, paratype (1)
ZMA 110.088, paratype (1)
ZMA 113.696, paratype (1)
ZMA 113.701, paratypes (6)
ZMA 113.703, paratypes (12)
ZMA 113.710, paratype (1)
ZMA 113.719, paratypes (2)
ZMA 113.737, paratypes (5)
ZMA 114.477, paratype (1)

Periophthalmus weberi Eggert, 1935: 55-56.

New Guinea

ZMA 100.079, syntypes (3)
ZMA 100.097, syntypes (4)

- ZMA 109.805, syntype (1)
 ZMA 112.939, syntypes (5)
 ZMA 112.940, syntypes (2)
 ZMA 112.941, syntype (1)
 ZMA 112.942, syntypes (5)

Pleurosicya boldinghi Weber, 1913: 457.

New Guinea

- ZMA 100.209, syntypes (3)
 ZMA 112.576, syntype (1)

Pogoneleotris microps Weber, 1908: 258.

New Guinea

- ZMA 112.084, syntypes (16)
 ZMA 112.086, syntype (1)

Quisquilius macrophthalmus Weber, 1909: 156-157.

Indonesia

- ZMA 110.952, holotype

Quisquilius profundus Weber, 1909: 155-156.

Indonesia

- ZMA 110.950, syntype (1)
 ZMA 110.951, syntypes (3)

Schismatogobius bruynisi de Beaufort, 1912:

139-140.

Indonesia

- ZMA 111.196, holotype

Sicydium wichmanni Weber, 1894: 413-414.

Indonesia

- ZMA 111.274, lectotype, designated by Koumans,
 1953: 226.
 ZMA 111.275, paralectotypes (6)
 ZMA 111.276, paralectotypes (5)

ZMA 111.277, paralectotypes (2)

Sicyopterus brevis de Beaufort, 1912: 141-142.

Indonesia

ZMA 110.981, syntypes (2)

Sicyopterus longifilis de Beaufort, 1912:

140-141.

Indonesia

ZMA 112.562, syntypes (2)

Sicyopterus ouwensi Weber, 1913: 602.

New Guinea

ZMA 112.564, syntype (1)

ZMA 112.565, syntypes (2)

Sicyopterus sarasini Weber & de Beaufort, 1915: 40.

New Caledonia

ZMA 108.025, syntype (1)

Sicyopus multisquamatus de Beaufort, 1912: 142-143.

Indonesia

ZMA 110.982, holotype

Stiphodon semoni Weber, 1895: 270.

Indonesia

ZMA 110.972, syntypes (6)

Taenioides coecus Weber, 1913: 486.

Indonesia

ZMA 109.813, syntype (1)

ZMA 109.843, syntypes (3)

Xenogobius weberi Metzelaar, 1919: 140-141

Antilles

ZMA 110.990, holotype

ACANTHUROIDEI

Hepatus weberi Ahl, 1923: 37.

Indonesia

ZMA 116.476, syntypes (2)

SCOMBROIDEI

Ruvettus tydemani Weber, 1913: 401-404.

Indonesia

ZMA 109.999, holotype

ANABANTOIDEI

Betta patoti Weber & de Beaufort, 1922: 359-360.

Indonesia

ZMA 112.510, syntype (1)

ZMA 112.511, syntype (1)

ZMA 112.512, syntypes (2)

ZMA 112.513, syntypes (3)

Betta splendens Regan, 1908: 782.

Malaya

ZMA 114.490, syntype (1)

Parophiocephalus unimaculatus Popta, 1905: 184-185.

Indonesia

ZMA 114.486, syntype (1)

MASTACEMBELOIDEI

Mastacembelus billitonensis de Beaufort, 1939:

194-195.

Indonesia

ZMA 111.583, syntypes (3)

PLEURONECTIFORMES
PLEURONECTOIDEI

Anticitharus annulatus Weber, 1913: 433-434.

Indonesia

ZMA 109.413, syntypes (2)

ZMA 109.414, syntype (1)

Arnoglossus elongatus Weber, 1913: 431.

Indonesia

ZMA 109.391, syntypes (3)

Arnoglossus profundus Weber, 1913: 430.

Indonesia

ZMA 109.393, syntype (1)

ZMA 109.394, syntype (1)

Lepidoblepharon ophthalmolepis Weber, 1913: 422.

Indonesia

ZMA 109.386, holotype

Nematops grandisquama Weber & de Beaufort, 1929:
134-136.

Indonesia

ZMA 112.647, syntypes (4)

Platophrys microstoma Weber, 1913: 427-428.

Indonesia

ZMA 109.389, holotype

Pseudorhombus affinis Weber, 1913: 426-427.

Indonesia

ZMA 109.392, syntypes (3)

Pseudorhombus argus Weber, 1913: 425-426.

Indonesia

ZMA 109.385, holotype

Pseudorhombus quinquocellatus Weber & de Beaufort,
1929: 104-105.

Indonesia

ZMA 112.569, lectotype, designated by Norman,
1934: 101.

ZMA 109.328, paralectotype (1)

Samariscus huysmani Weber, 1913: 420-421.

Indonesia

ZMA 109.324, holotype

Samariscus sunieri Weber & de Beaufort, 1929: 141.

Indonesia

ZMA 109.317, syntypes (9)

SOLEOIDEI

Achirus abnormis Weber & de Beaufort, 1929: 163-164

Indonesia

ZMA 109.466, holotype

Aphoristia microrhynchus Weber, 1913: 444-445.

Indonesia

ZMA 108.193, holotype

Aseraggodes dubius Weber, 1913: 438-439.

Indonesia

ZMA 109.390, holotype

Aseraggodes filiger Weber, 1913: 436-437.

Indonesia

ZMA 109.387, holotype

Aseraggodes microlepidotus Weber, 1913: 438.

Indonesia

ZMA 109.405, holotype

Aseraggodes texturatus Weber, 1913: 437.

Indonesia

ZMA 109.388, holotype

Compsomidiana medium Chabanaud, 1951: 1-10.

Indonesia

ZMA 100.245a, holotype

ZMA 100.245b, paratype (1)

Cynoglossus beauforti Chabanaud, 1951: 1-4.

Indonesia

ZMA 108.001, holotype

Cynoglossus heterolepis Weber, 1910: 237-238.

New Guinea

ZMA 109.408, syntype (1)

ZMA 109.409, syntypes (6)

ZMA 109.410, syntypes (2)

ZMA 109.411, syntype (1)

Cynoglossus sibogae Weber, 1913: 442.

Indonesia

ZMA 100.177, lectotype, designated by Menon
1977: 44.

ZMA 100.176, paralectotype (1)

Pardachirus klunzingeri Weber, 1908: 250.

New Guinea

ZMA 109.407, holotype

Solea vermeuleni Metzelaar, 1919: 279-280.

Mauritania

ZMA 112.927, holotype

Symphurus fallax Chabanaud, 1957: 183-185.

Indonesia

ZMA 100.273, holotype (not returned by
Chabanaud)

Symphurus regani Weber & de Beaufort, 1929: 210.

Indonesia

ZMA 100.246, lectotype, designated by Chabanaud,
1955: 44

ZMA 100.247, paralectotype (1)

ZMA 100.248, paralectotype (1)

ZMA 100.249, paralectotype (1)

ZMA 100.250, paralectotype (1)

Symphurus vittatus Weber, 1908: 250-251.

New Guinea

ZMA 100.172, holotype

Synaptura villosa Weber, 1908: 251-252.

New Guinea

ZMA 108.181, syntype (1)

ZMA 108.182, syntypes (2)

TETRAODONTIFORMES

BALISTOIDEI

Aluterus blankerti Metzelaar, 1919: 295-296.

Mauritania

ZMA 102.359, syntypes (2)

Halimochirurgus alcocki Weber, 1913: 571-573.

Indonesia

ZMA 104.123, holotype

Tydemania navigatoris Weber, 1913: 571.

Indonesia

ZMA 104.643, holotype

TETRAODONTOIDEI

Chilomycterus briareos Metzelaar, 1919: 173.

Antilles

ZMA 102.164, holotype

Chilomycterus hardenbergi de Beaufort, 1939: 33-34.

New Guinea

ZMA 108.475, holotype

Sphoeroides meraukensis de Beaufort, 1955: 53.

New Guinea

ZMA 104.139, lectotype, by present designation

ZMA 104.140, paralectotypes (3)

ZMA 104.141, paralectotypes (5)

Tetraodon nigroviridis Marion de Procé, 1822: 130.

Indonesia

ZMA 113.020, neotype, designated by Dekkers,

1975: 123-127.

Tetrodon eulepidotus Metzelaar, 1919: 170-171.

Antilles

ZMA 109.480, holotype

REFERENCES

- Ahl, E.
 1923 Ichthyologische Mitteilungen. Ueber eine neue Art der Gattung Hepatus (nebst Bemerkungen über eine zweite Hepatus weberi nom. nov.).- Mitt. zool. Mus. Berlin, 11 (1): 36-37.
- Alcock, A.
 1894 An account of a recent collection of batyrbial fishes from the Bay of Bengal and from the Laccadive Sea (= Nat. Hist. Notes H. M. Indian Marine Survey Steamer "Investigator"). J. Asiat. Soc. Bengal, 63, II (2): 1-24, pls. 6-7.
- Allen, G. R.
 1978 The Rainbow fishes of northwestern Australia (family Melanotaeniidae).- Trop. Fish Hobby., 26 (10): 91-102.
- 1978 A review of the Archer fishes (family Toxotidae).- Rec. West. Aust. Mus., 6 (4): 355-378
- 1980 Chilatherina axelrodi, a new species of Rainbow fish (Melanotaeniidae) from Papua New Guinea.- Trop. Fish Hobby., 28 (4): 48-49, 52-55.
- 1980 Two new species of freshwater Rainbowfishes (Melanotaeniidae) from Papua New Guinea.- Rev. fr. Aquariol. Herpétol., 7 (2): 43-50.
- 1980 Central Highland Rainbows from Papua New Guinea, with descriptions of two new species

- Allen, G. R. (continued)
 (Melanotaeniidae).- Trop. Fish Hobby., 29
 (5): 20-33, 68-81.
- 1981 Popondetta connieae, a new species of Rainbowfish (Melanotaeniidae) from Papua New Guinea.- Rev. fr. Aquariol. Herpétol., 8 (2): 43-46.
- Allen, G. R. & P. J. Kailola
 1979 Glossolepis wanamensis, a new species of freshwater Rainbowfish (Melanotaeniidae) from New Guinea.- Rev. fr. Aquariol. Herpétol., 6 (2): 39-44.
- Allen, G. R. & R. Moore
 1981 Pseudomugil paludicola, a new species of freshwater Blue-eye (Melanotaeniidae) from Papua New Guinea.- Rev. fr. Aquariol. Herpétol., 7 (4): 105-108.
- Annandale, N.
 1906 Notes on the freshwater fauna of India, 7. A new Goby from fresh and brackish water in Lower Bengal.- J. Proc. Asiat. Soc. Bengal (n.s.), 2: 201-202.
- 1909 Batoidei, part I. Report on the fishes taken by the Bengal steamer "Golden Crown".- Mem. Indian Mus., 2 (1): 1-58.
- Annandale, N. & J. T. Jenkins
 1910 Plectognathi and Pediculati. Report on the fishes taken by the Bengal fisheries steamer "Golden Crown".- Rec. Indian Mus., 3 (1): 7-21.

Bailey, R. G. & H. Matthes

- 1971 A new species of *Engraulicypris* (Cyprinidae) from Tanzania, East Africa.- *Revue Zool. Bot. afr.*, 83 (1-2): 79-83.

Banarescu, P. & M. R. Mirza

- 1972 *Noemacheilus alepidotus nalbanti* nova subsp., a new Loach from Rawlakot, Azad Kashmir.- *Biologia, Lahore*, 18 (2): 121-123.

Beaufort, L. F. de

- 1910 Weitere Bestätigung einer zoogeographischen Prophezeiung.- *Zool. Anz.*, 36 (12-13): 249-252.
- 1912 On some new Gobiidae from Ceram and Waigeu.- *Zool. Anz.*, 39 (3): 136-143.
- 1913 Fishes of the eastern part of the Indo-Australian Archipelago with remarks on its zoogeography.- *Bijdr. Dierk.*, 19: 95-164.
- 1927 Description of a new Cyprinoid fish from Siam.- *J. Siam Soc.*, 7 (1): 5-6.
- 1931 Über eine neue *Rasbora*-Art.- *Das Aquarium, Berlin* (June, 1931): 8.
- 1933 Sur un nouveau *Labeobarbus* de l'Angola portugais.- *Bull. Soc. zool. Fr.*, 57: 493-495.
- 1933 On some new or rare species of Ostariophysi from the Malay Peninsula and a new species of *Betta* from Borneo.- *Bull. Raffles Mus.*, 8: 31-36.
- 1939 On a new species of *Chilomycterus* from New

Beaufort, L. F. de (continued)

- Guinea.- Treubia, 17 (1): 33-34.
- 1939 On a collection of freshwater fishes of the Island of Billiton.- Treubia, 17 (3): 189-198.
- 1939 On some Indo-Pacific genera of Labroid fishes, with the description of a new genus and species.- Bijdr. Dierk., 27: 14-18.
- 1940 In: M. Weber & L. F. de Beaufort, The fishes of the Indo-Australian Archipelago, VIII. Percomorphi (continued), Cirrhitoidea, Labriformes, Pomacentriformes, : i-xv, 1-508 (E. J. Brill, Leiden).
- 1940 Freshwater fishes from the Leeward group, Venezuela and eastern Colombia.- Stud. Fauna Curaçao, 7: 109-114.
- 1948 On a new genus of the family Creediidae from South Africa, with remarks on its geographical distribution.- Trans. Soc. Afr., 31 (5): 475-478.
- 1951 In: M. Weber & L. F. de Beaufort, with the collaboration of W. M. Chapman, The fishes of the Indo-Australian Archipelago, IX. Percomorphi (concluded), Blennoidea, : i-xi, 1-484 (E. J. Brill, Leiden).
- 1955 On a new and interesting Globe fish from New Guinea.- Beaufortia, 5 (48): 53-54.
- 1956 On a new species of *Platycephalus*.- Proc. natn. Inst. Sci., India, 22B (2): 83-85.

Beaufort, L. F. de (continued)

- 1962 In: M. Weber & L. F. de Beaufort, with the collaboration of J. C. Briggs, The fishes of the Indo-Australian Archipelago, XI. Scleroparei, Hypostomides, Pediculati, Plectognathi, Opisthomi, Discocephali, Xenopterygii, : i-xi, 1-481 (E. J. Brill, Leiden).

Boeseman, M.

- 1968 The genus *Hypostomus* Lacépède, 1803, and its Surinam representatives (Siluriformes, Loricariidae).- Zool. Verh. Leiden, 99: 1-89
- 1969 Additional new species of *Hypostomus* Lacépède, 1803, from Surinam, with remarks on the apparent "gymnorhynchus-complex" (Siluriformes, Loricariidae).- Beaufortia, 16 (215): 119-136.
- 1971 The "comb-toothed" Loricariinae of Surinam, with reflections on the phylogenetic tendencies within the family Loricariidae (Siluriformes, Siluroidei).- Zool. Verh. Leiden, 116: 3-56.
- 1974 On two Surinam species of Hypoptopomatinae, both new to science (Loricariidae, Siluriformes, Ostariophysi).- Proc. Kon. Ned. Akad. Wetensch., (C), 77 (3): 257-271, 2 pls.
- 1976 A short review of the Surinam Loricariinae, with additional information on Surinam Harttiinae, including the description of a new species (Loricariidae, Siluriformes).- Zool. Meded. Leiden, 50 (11): 153-177.

Briggs, J. C.

- 1955 A monograph of the Clingfishes (order Xeno-

Briggs, J. C. (continued)

pterygii).- Stanford ichth. Bull., 6: 1-224.

Britski, H. A.

1969 Lista dos tipos de peixes das coleções do Departamento de Zoologia da Secretaria da Agricultura de São Paulo.- Pap. Avulsos Depto. Zool. São Paulo, 22 (19): 197-215.

Chabanaud, P.

1951 Sur deux Cynoglossus de la collection ichthyologique du Zoölogisch Museum, Amsterdam.- Beaufortia, 1 (5): 1-4.

1951 Description d'une espèce nouvelle, type d'un genre inédit, appartenant à la famille des Cynoglossidae, sous-famille des Cynoglossinae. Beaufortia, 1 (7): 1-9.

1955 Révision des Symphurus du Siboga.- Beaufortia, 5 (46): 43-45.

1957 Description d'un Symphurus inédit, fruit de la croisière 1899-1900 du Siboga.- Beaufortia, 5 (62): 183-185.

Collette, B. B. & N. V. Parin

1978 Five new species of Halfbeaks (Hemiramphidae) from the Indo-West Pacific.- Proc. biol. Soc. Washington, 91 (3): 731-747.

Dam, A. J. van

1926 Two new fishes from China.- Ann. Mag. nat. Hist. (ser. 9), 18: 342.

Day, F.

1871 Monograph of Indian Cyprinidae.- J. roy. Asiat

- Day, F. (continued)
Soc. Bengal, 41: 318-326.
- Dekkers, W. J.
1975 Review of the Asiatic freshwater Puffers of the genus *Tetraodon* Linnaeus, 1758 (Pisces, Tetraodontiformes, Tetraodontidae).- *Bijdr. Dierk.*, 45 (1): 87-142.
- Duncker, G.
1904 Die Fische der malayischen Halbinsel.- *Mitt. naturh. Mus. Hamburg*, 21 (2): 135-207.
1915 Revision der Syngnathidae.- *Mitt. naturh. Mus. Hamburg*, 32: 9-120.
- Durbin, M. L.
1909 Reports on the expedition to British Guiana of the Indiana University and the Carnegie Museum, 1908. Rep. 2. A new genus and twelve new species of Tetragonopterid Characins.- *Ann. Carnegie Mus.*, 6 (1): 55-72.
- Ebeling, A. W.
1962 Melamphaidae. Systematics and zoogeography of the species in the bathypelagic fish genus *Melamphaes* Günther.- *Dana Rep.*, 58: 1-164.
- Eggert, B.
1935 Beitrag zur Systematik, Biologie und geographischen Verbreitung der Periophthalminae. Ergebnisse einer durch die Notgemeinschaft der deutschen Wissenschaft ermöglichten Reise nach Niederländisch-Indien 1926-1927 und der Sunda Expedition der Notgemeinschaft der

Eggert, B. (continued)

deutschen Wissenschaft 1929-1930.- Zool. Jb.,
67 (1-2): 29-116.

Eigenmann, C. H.

1909 Report on the expedition to British Guiana
of the Indiana University and the Carnegie
Museum, 1908. Some new genera and species
of fishes from British Guiana.- Ann. Carnegie
Mus., 6 (1): 4-54.

1912 The freshwater fishes of British Guiana, in-
cluding a study of the ecological grouping of
species and the relation of the fauna of the
plateau to that of the lowlands.- Mem. Carnegie
Mus., 5 (1): i-xvii, 1-272, 103 pls.

1927 The American Characidae, IV.- Mem. Mus. comp.
Zool. Harvard, 43 (4): 311-428, pls. 34-99.

Eigenmann, C. H. & R. S. Eigenmann

1889 Preliminary notes on South American Nemato-
gnathi, II.- Proc. California Acad. Sci., (2)
2: 28-56.

Eigenmann, C. H., A. Henn & C. Wilson

1914 New fishes from western Colombia, Ecuador,
and Peru.- Indiana Univ. Stud., 2 (19): 1-15.

Eigenmann, C. H. & G. S. Myers

1929 The American Characidae, V.- Mem. Mus. comp.
Zool. Harvard, 43 (5): 429-558.

Eschmeyer, W. N.

1969 A systematic review of the Scorpionfishes of
the Atlantic Ocean (Pisces, Scorpaenidae).-

Eschmeyer, W. N. (continued)

Occ. Pap. California Acad. Sci., 79: 1-143.

Fink, W. L.

1976 A new genus and species of Characid fish from the Bayano River Basin, Panama (Pisces, Cypriniformes).- Proc. biol. Soc. Washington, 88 (30): 331-344.

1979 A new species of Moenkhausia from the Mato Grosso region of Brazil (Pisces: Characidae).- Breviora, 450: 1-12.

Fink, W. L. & S. H. Weitzman

1974 The so-called Cheirodontin fishes of Central America, with descriptions of two new species (Pisces, Characidae).- Smithson. Contr. Zool., 172: 1-46.

Géry, J.

1959 Thayeria ifati, n. sp. of Guiana, with considerations on the evolution of the genus.- Senckenb. biol., 40 (3-4): 127-133.

1959 Nouvelles espèces de Guyane française du genre Hemigrammus (Tetragonopterinae), avec une liste critique des formes recensées.- Bull. mens. Soc. linn. Lyon, 28 (8): 248-260.

1960 New Cheirodontinae from French Guiana.- Senckenb. biol., 41 (1-2): 15-39.

1960 Jobertina electrioides n. sp. (Characidiinae) from French Guiana, with considerations about the genus and redescription of the type-species. Opusc. zool. München, 47: 1-10.

Géry, J. (continued)

- 1961 Révision de la super-espèce *Anostomus anostomus* (L.) et description de formes nouvelles: *A. brevior* et *A. anostomus longus* (Erythrinidae, Anostominae).- Bull. Mus. Hist. nat. Paris, (2) 32 (6): 498-505.
- 1961 *Hyphessobrycon georgetti* sp. nov., a dwarf species from southern Surinam.- Bull. aquat. Biol., 2 (22): 121-128.
- 1962 The distribution pattern of the genus *Hemibrycon*, with a description of a new species from Surinam and an incursion into ecotaxonomy.- Bull. aquat. Biol., 3 (28): 65-80.
- 1963 Three new Tetras from the upper Rio Negro near Tapurucuara.- Trop. Fish Hobby., 12 (3): 9, 11, 13-15, 57-59, 62-63.
- 1964 Une nouvelle famille des poissons dulcaquicoles africains: les Grasseichthyidae.- C. R. Séanc. Acad. Sci. Paris, 259: 4805-4807.
- 1964 Two new Tetras from the lower Amazon Basin.- Trop. Fish Hobby., 12 (7): 13-15, 59-60.
- 1964 Preliminary descriptions of seven new species and two new genera of Characoid fishes from the upper Rio Meta in Colombia.- Trop. Fish Hobby., 12 (5): 25-32, 41-48.
- 1964 Poissons characoides de l'Amazone péruvienne.- Beitr. neotrop. Fauna, 4 (1): 1-44.
- 1965 *Brittanichthys*, a new, sexually-dimorphic Charac-

Géry, J. (continued)

- id genus with peculiar caudal ornament, from the Rio Negro, Brazil, with a discussion of certain Cheirodontin genera and a description of two new species, *B. axelrodi* and *B. myersi*.- *Trop. Fish Hobby.*, 13 (6): 13-23, 61-69.
- 1965 Characidae et Crenuchidae de l'Igarape Preto (Haute Amazonie).- *Senckenb. biol.*, 46 (1): 11-45, and 46 (3): 195-218.
- 1966 *Hyphessobrycon vilmae* sp. nov., a new Tetra from the upper Juruena, Brazil, with keys to the heterorhabdus-like species.- *Ichthyologica*, 37 (2): 63-70.
- 1966 *Axelrodia riesei*, a new Characoid fish from upper Rio Méta in Colombia (with remarks concerning the genus *Axelrodia* and description of a similar sympatric *Hyphessobrycon*-species).- *Ichthyologica*, 37 (3): 111-120.
- 1966 Notes on the Characoid fishes collected in Surinam by Mr H. P. Pijpers, with descriptions of new forms.- *Bijdr. Dierk.*, 35: 101-126.
- 1966 A review of certain Tetragonopterinae (Characoides), with the description of two new genera.- *Ichthyologica*, 37 (5): 211-236.
- 1966 *Hoplocharax goethei*, a new genus and species of South American Characoid fishes, with a review of the sub-tribe *Heterocharacini*.- *Ichthyologica*, 37 (6): 281-296.
- 1970 Le genre *Iguanodectes* Cope (Pisces, Charac-

Géry, J. (continued)

oidei).- Amazonia, 2 (4): 417-433.

- 1973 New and little-known Aphyoditeina (Pisces, Characoidei) from the Amazon Basin.- Stud. neotrop. Fauna, 8: 81-137.

Gosline, W. A.

- 1940 A revision of the neotropical catfishes of the family Callichthyidae.- Stanford ichth. Bull., 2 (1): 1-36.

Günther, A.

- 1868 Diagnoses of some new freshwater fishes from Surinam and Brazil, in the collections of the British Museum.- Ann. Mag. nat. Hist., (4) 1 (6): 475-481.

Hardenberg, J. D. F.

- 1936 Some new or rare fishes of the Indo-Australian Archipelago.- Treubia, 15 (4): 367-378.

Herre, A. W. C. T.

- 1927 Gobies of the Philippines and the China Sea.- Monogr. Philippine Bur. Sci., 23: 1-352, 30 pls.

Hoedeman, J. J.

- 1950 A new Characid Erythrinine fish (*Pseuderythrinus rosapinnis* gen. et sp. nov.).- Amsterdam Nat., 1 (3): 79-91.
- 1951 Een nieuwe kleine Gobiide vis met samengroeide buikvinnen bij de man (*Dormitator lophocephalus* sp. nov.).- Beaufortia, 1 (2): 1-6.

Hoedeman, J. J. (continued)

1951 The tribe Alestidi (I).- *Beaufortia*, 1 (3):
1-8.

1951 *Apistogramma cacatuoides* sp. nov.- *Beaufortia*,
1 (4): 1-4.

1952 The catfish genera *Hoplosternum* and *Call-
ichthys*, with key to the genera and groups
of the family *Callichthyidae*.- *Beaufortia*,
1 (12): 1-12.

1952 The Surinam representatives of *Gasteropelecus*
and *Carnegiella*, with remarks on the tribe
Gasteropelecidi.- *Beaufortia*, 2 (20): 1-16.

1954 *Rivulus agilae*, een nieuwe soort van Suriname.-
Het Aquarium, 24 (9): 202-203.

1954 A new species and two new subspecies of
Nannostomidi from the Surinam River.- *Beau-
fortia*, 4 (39): 81-89.

1956 *Nannaethiops geisleri*, eine neue Art aus dem
Kongo, nebst einer Übersicht über die Arten
der Sippe *Nannaethiopidi*.- *Aquar. Terrar.
Zeitschr.*, 9 (10): 259-261.

1956 *Hyphessobrycon rubrostigma*, neue Species.
Eine höchst interessante und farbenfreudige
Form der *callistus*-Gruppe aus Kolumbien.-
Aquar. Terrar. Zeitschr., 9 (12): 312-313.

1957 *Hyphessobrycon griemi*, eine neue farbenprächtige
Neuheit der *bifasciatus*-Gruppe aus Gojas.-
Aquar. Terrar. Zeitschr., 10 (4): 87-89.

Hoedeman, J. J. (continued)

- 1958 Rivulid fishes of the Antilles.- Stud. Fauna Curaçao, 8: 112-126.
- 1960 A list of type specimens of fishes in the Zoological Museum, University of Amsterdam. 1. Order Mugiliformes.- Beaufortia, 7 (87): 211-217.
- 1961 Additional records of Cyprinodontiform fishes (1).- Bull. aquat. Biol., 2 (17): 61-64.
- 1961 Additional records of Siluriform fishes (2).- Bull. aquat. Biol., 2 (23): 129-139.
- 1962 New records of Gymnotid fishes.- Bull. aquat Biol., 3 (26): 53-60.
- 1962 New Gymnotoid fishes from Surinam and French Guiana, with additional records and a key to the groups and species from Guiana.- Bull. aquat. Biol., 3 (30): 97-108.
- 1962 A new species of the genus Rivulus from Ecuador, with additional records of Rivulus from the upper Amazon and Ucayali rivers.- Beaufortia, 19 (103): 145-150.
- Hora, S. L.
- 1921 Fish and fisheries of Manipur with some observations on those of the Naga Hills.- Rec. Indian Mus., 22 (3-19): 165-214.
- 1932 Classification, bionomics and evolution of Homalopterid fishes.- Mem. Indian Mus., 12

- Hora, S. L. (continued)
(2): 263-330.
- Hubbs, C. L.
 1923 A note on the species of Evermannichthys, a genus of sponge-inhabiting Gobies.- Occ. Pap. Mus. Zool. Univ. Michigan, 144: 1-2.
 1936 Fishes of the Yucatan Peninsula.- Publs. Carnegie Inst., 457: 157-287.
 1952 A contribution to the classification of the Blennioid fishes of the family Clinidae, with a partial revision of the eastern Pacific forms.- Stanford ichth. Bull., 4 (2): 41-165.
- Hubbs, C. L. & M. Gordon
 1943 Studies of Cyprinodont fishes, XIX. Xiphophorus pygmaeus, new species from Mexico.- Copeia, 1943 (1): 31-33, pl. 1.
- Ihering, R. von
 1911 Algumas especies novas de peixes d'agua doce (Nematognatha) (Corydoras, Plecostomus, Hemipsilichthys).- Revta Mus. Paul., 8: 380-404.
- Isbrücker, I. J. H
 1970 Lepidarchus adonis signifer, a new subspecies of Characoid fish from Liberia (Pisces, Cypriniformes, Characidae).- Beaufortia, 18 (234): 133-140.
 1972 The identity of the South American catfish Loricaria cataphracta Linnaeus, 1758, with

Isbrücker, I. J. H. (continued)

- redescriptions of the original type specimens of four other nominal Loricaria species (Pisces, Siluriformes, Loricariidae).- *Beaufortia*, 19 (255): 163-191.
- 1973 Status of the primary homonymous South American catfish *Loricaria cirrhosa* Perugia, 1897, with remarks on some other Loricariids (Pisces, Siluriformes, Loricariidae).- *Ann. Mus. St. nat. Genova*, 79: 172-191.
- 1975 *Metaloricaria paucidens*, a new species and genus of Mailed catfish from French Guiana (Pisces, Siluriformes, Loricariidae).- *Bull. Inst. r. Sci. nat. Belg.*, 50 (4): 1-9, 3 pls
- 1979 Descriptions préliminaires de nouveaux taxa de la famille des Loricariidae, Poissons-Chats cuirassés néotropicaux, avec un catalogue critique de la sous-famille nominale (Pisces, Siluriformes).- *Rev. fr. Aquariol. Herpétol.*, 5 (4): 86-116.

Isbrücker, I. J. H. & H. Nijssen

- 1973 Two new species of the Callichthyid catfish genus *Corydoras* from Brazil (Pisces, Siluriformes, Callichthyidae).- *Beaufortia*, 21 (272): 1-7.
- 1974 On *Hemiodontichthys acipenserinus* and *Reganella depressa*, two remarkable Mailed catfishes from South America (Pisces, Siluriformes, Loricariidae).- *Beaufortia*, 22 (294): 193-222.
- 1976 *Rineloricaria heteroptera*, a new species of

Isbrücker, I. J. H. & H. Nijssen (continued)

Mailed catfish from Rio Amazonas near Manaus, Brazil (Pisces, Siluriformes, Loricariidae).- Zool. Anz. Jena, 196 (1-2): 109-124.

1978 Two new species and a new genus of neotropical Mailed catfishes of the subfamily Loricariinae Swainson, 1838 (Pisces, Siluriformes, Loricariidae).- Beaufortia, 27 (339): 177-206.

1979 Three new South American Mailed catfishes of the genera Rineloricaria and Loricariichthys (Pisces, Siluriformes, Loricariidae).- Bijdr. Dierk., 48 (2): 191-211.

Ivantsoff, W. & C. J. M. Glover

1974 Craterocephalus dalhousiensis n. sp., a sexually dimorphic freshwater Teleost (Atherinidae) from South Australia.- Aust. Zool., 18 (2): 88-98.

Karrer, C.

1973 Über Fische aus dem Süd-Ost-Atlantik.- Mitt. Zool. Mus. Berlin, 49 (1): 191-257.

Kner, R.

1854 Die Panzerwelse des k.k. Hof-Naturalien-Cabinetes zu Wien. I. Abtheilung: Loricariinae.- Denkschr. Akad. Wiss. Wien, mathem.-naturwiss. Cl., 6: 65-98, 8 pls.

Knöppel, H. A., W. Junk & J. Géry

1968 Bryconops (Creatochanes) inpai, a new Characoid fish from the central Amazon region, with a review of the genus Bryconops.- Amazonia, 1 (3): 231-246.

Koumans, F. P.

1936 Notes on Gobioid fishes of the Indo-Australian species of *Oxyeleotris*, Bleeker.- *Zoöl. Meded. Leiden*, 19: 128-134.

1953 Gobioida. In: M. Weber & L. F. de Beaufort, *The fishes of the Indo-Australian Archipelago*, X, : 1-416 (E. J. Brill, Leiden).

Kullander, S. O.

1979 Description of a new species of the genus *Apistogramma* from Peru.- *Rev. Suisse Zool.*, 86 (4): 937-945.

1980 Description of a new species of *Apistogramma* from the Rio Madeira system in Brazil.- *Bull. Zoöl. Mus. Univ. Amsterdam*, 7 (16): 157-164.

Lachner, E. A. & S. J. Karnella

1980 Fishes of the Indo-Pacific genus *Eviota* with descriptions of eight new species (Teleostei: Gobiidae).- *Smithson. Contr. Zool.*, 315: i-iii, 1-127.

Macleay, W.

1883 On a new and remarkable fish of the family *Mugilidae* from the interior of New Guinea.- *Proc. Linn. Soc. N. S. W.*, 8: 2-6.

Marion de Procé, [?]

1822 Sur plusieurs espèces nouvelles de poissons et de crustacés observées par M. Marion de Procé, D. M. P., membre correspondant de la Société Philomatique.- *Bull. Soc. philom. Paris*, 1822: 129-134.

Martín Salazar, F. J.

- 1964 Las especies del genero Farlowella de Venezuela (Piscis - Nematognathi - Loricariidae) con descripcion de 5 especies y 1 sub-especie nuevas.- Mem. Soc. Cienc. nat. La Salle, 24 (69): 242-260, 1 table outside text.

Matthes, H.

- 1964 List of the types of African freshwater fishes in the Amsterdam Zool. Mus., with notes on their synonymy.- Beaufortia, 10 (122): 177-182.

Mees, G. F.

- 1974 The Auchenipteridae and Pimelodidae of Suriname (Pisces, Nematognathi).- Zool. Verh. Leiden, 132: 1-256.

Mees, G. F. & P. J. Kailola

- 1977 The freshwater Therapontidae of New Guinea.- Zool. Verh. Leiden, 153: 1-89

Menezes, N. A.

- 1969 Systematics and evolution of the tribe Acestrorhynchini (Pisces, Characidae).- Archos. Zool. Est. S. Paulo, 18 (1-2): 1-150

Menon, A. G. K.

- 1977 A systematic monograph of the Tongue Soles of the genus Cynoglossus Hamilton-Buchanan (Pisces: Cynoglossidae).- Smithson. Contr. Zool., 238: i-iv, 1-129.

Menon, A. G. K. & N. Govindan

- 1976 Oxyurichthys nijsseni, a new Gobioid fish

Menon, A. G. K. & N. Govindan (continued)

from Ennore Estuary, east coast of India, with a key to the identification of the Indo-West Pacific species of the genus *Oxyurichthys*.- *Matsya*, 2: 13-15.

Metzelaar, J.

1919 Over tropisch Atlantische visschen, : 1-134 (iv) (A. H. Kruyt, Amsterdam).

= Report on the fishes, collected by Dr. J. Boeke in the Dutch West Indies 1904-1905. With comparative notes on marine fishes of tropical West Africa (F. J. Belinfante, 's-Gravenhage).

1922 On a collection of marine fishes from the Lesser Antilles.- *Bijdr. Dierk.*, 22: 133-141.

Miller, R. R.

1943 *Cyprinodon salinus*, a new species of fish from Death Valley, California.- *Copeia*, 1943 (2): 69-78.

1948 The Cyprinodont fishes of the Death Valley system of eastern California and southern Nevada.- *Misc. Publs. Mus. Zool. Michigan*, 68: 7-155.

Mirza, M. R.

1967 *Tor zhobensis* sp. nov., a new Mahseer from the river Zhob, West-Pakistan.- *Pakist. J. scient. Res.*, 19 (1): 54-56.

Mirza, M. R. & M. I. Awan

1973 Two new catfishes (Pisces, Siluriformes) from Pakistan.- *Biologia, Lahore*, 19 (1-2) 145-159.

- Mirza, M. R., P. Banarescu & T. T. Nalbant
 1969 Two new Loaches of the genus *Noemacheilus* from West Pakistan.- *Pakist. J. Zool.*, 1 (1): 87-90.
- 1970 A little-known and three new Loaches of the genus *Noemacheilus* (Pisces, Cobitidae) from West Pakistan.- *Biologia, Lahore*, 16 (1): 47-58.
- Mirza, M. R. & K. M. Kahmiri
 1971 A note on the fishes of the genus *Glyptothorax* Blyth (Osteichthyes, Sisoridae) from West-Pakistan, with the description of a new subspecies.- *Biologia, Lahore*, 17 (2): 87-93.
- Mirza, M. R., T. T. Nalbant & P. M. Banarescu
 1981 A review of the genus *Schistura* in Pakistan with description of new species and subspecies (Pisces, Cobitidae, *Noemacheilinae*).- *Bijdr. Dierk.*, 51 (1): 105-130.
- Mirza, M. R. & H. Nijssen
 1978 *Glyptothorax stocki*, a new Sisorid catfish from Pakistan and Azad Kashmir (Siluriformes, Sisoridae).- *Bull. Zoöl. Mus. Univ. Amsterdam*, 6 (11): 79-85.
- Mohr, E.
 1926 Die Gattung *Zenarchopterus* Gill.- *Zool. Jb.*, 52: 231-266.
- Myers, G. S. & S. H. Weitzman
 1960 Two new fishes collected by General Thomas D. White in eastern Colombia.- *Stanford Ichth. Bull.*, 7 (4): 98-109.

Nalbant, T. T.

- 1957 *Cobitis aurata vallachica*, eine neue Unterart des Balkansteinpeitzgers (Pisces, Cobitidae).- Senckenb. biol., 38 (3-4): 209-212.

Nichols, J. T.

- 1925 Some Chinese fresh-water fishes. IV. Gudgeons of the genus *Coripareius*. V. Gudgeons related to the European *Gobio gobio*. VI. New Gudgeons of the genera *Gnathopogon* and *Leucogobio*.- Amer. Mus. Novit., 181: 1-8.

- 1925 Some Chinese fresh-water fishes. VII. New Carps of the genera *Varicorhinus* and *Xenocypris*. VIII. Carps referred to the genus *Pseudorasbora*. IX. Three new Abramidin Carps.- Amer. Mus. Novit., 182: 1-8.

Nichols, J. T. & C. H. Pope

- 1927 The fishes of Hainan.- Bull. Amer. Mus. nat. Hist., 54: 321-394.

Nijssen, H.

- 1970 Revision of the Surinam catfishes of the genus *Corydoras* Lacépède, 1803 (Pisces, Siluriformes, Callichthyidae).- Beaufortia, 18 (230): 1-75.
- 1971 Two new species and one new subspecies of the South American catfish genus *Corydoras* (Pisces, Siluriformes, Callichthyidae).- Beaufortia, 19 (250): 89-98.
- 1972 Records of the catfish genus *Corydoras* from Brazil and French Guiana with descriptions of eight new species (Pisces, Siluriformes, Callichthyidae).- Neth. J. Zool., 21 (4):

- Nijssen, H. (continued)
412-433.
- Nijssen, H. & I. J. H. Isbrücker
- 1967 Notes on the Guiana species of *Corydoras* Lacépède, 1803, with descriptions of seven new species and designation of a neotype for *Corydoras punctatus* (Bloch, 1794) - (Pisces, Cypriniformes, Callichthyidae).- Zool. Meded. Leiden, 42 (5): 21-55, 5 pls.
- 1971 Two new species of the catfish genus *Corydoras* from Brazil and Peru (Pisces, Siluriformes, Callichthyidae).- *Beaufortia*, 18 (239): 183-189.
- 1976 The South American Plated catfish genus *Aspidoras* R. von Ihering, 1907, with descriptions of nine new species from Brazil (Pisces, Siluriformes, Callichthyidae).- *Bijdr. Dierk.*, 46 (1): 107-131.
- 1976 *Corydoras ornatus*, a new species of Callichthyid catfish from the Rio Tapajós drainage, Brazil (Pisces, Siluriformes, Callichthyidae).- *Bull. Zool. Mus. Univ. Amsterdam*, 5 (15): 125-129.
- 1976 A new Callichthyid catfish, *Corydoras gracilis*, from Brazil (Pisces, Siluriformes, Callichthyidae).- *Trop. Fish Hobby.*, 25 (1): 90-91, 94-96, 98.
- 1980 Three new *Corydoras* species from French Guiana and Brazil (Pisces, Siluriformes, Callichthyidae).- *Neth. J. Zool.*, 30 (3):

Nijssen, H. & I. J. H. Isbrücker (continued)
494-503.

1980 On the identity of *Corydoras nattereri* Steindachner, 1877 with the description of a new species, *Corydoras prionotos* (Pisces, Siluriformes, Callichthyidae).- *Beaufortia*, 30 (1): 1-9.

1980 *Aspidoras virgulatus* n. sp., a Plated catfish from Espírito Santo, Brazil (Pisces, Siluriformes, Callichthyidae).- *Bull. Zool. Mus. Univ. Amsterdam*, 7 (13): 133-139.

1980 A review of the genus *Corydoras* Lacépède, 1803 (Pisces, Siluriformes, Callichthyidae).- *Bijdr. Dierk.*, 50 (1): 190-220.

Nikolsky, G. W.

1938 A new species of Loach (Cobitidae, Pisces) from Central Asia.- *Bull. Soc. nat. Moscou*, 47 (5-6): 319-328.

Norman, J. R.

1926 Descriptions of nine new freshwater fishes from French Guiana and Brazil.- *Ann. Mag. nat. Hist. (ser. 9)*, 18: 91-97.

1934 A systematic monograph of the Flatfishes (Heterosomata), 1: 1-458 (Trustees British Mus. (Nat. Hist.), London).

1935 A revision of the Lizard-fishes of the genera *Synodus*, *Trachinocephalus*, and *Saurida*.- *Proc. zool. Soc. London*, 1935 (1): 99-135.

Omer, T. & M. R. Mirza

- 1975 A checklist of the fishes of Hazara District, Pakistan, with the description of a new subspecies.- *Biologia*, Lahore, 21 (2): 199-209.

Pellegrin, J.

- 1907 Liste des poissons recueillis à Madagascar par M. F. Geay. Description d'une espèce nouvelle.- *Bull. Mus. Hist. nat. Paris*, 13: 201-206.

Perugia, A.

- 1892 Descrizione di due nuove specie di pesci raccolti in Sarawak dal Sig. G. Doria ed O. Beccari.- *Ann. Mus. civ. St. nat. Giacomo Doria*, 2 (12): 1009-1010.
- 1893 Di alcuni pesci raccolti in Sumatra dal Dott. Elio Modigliani.- *Ann. Mus. civ. St. nat. Giacomo Doria*, 2 (13): 241-247.
- 1894 Viaggio di Lamberto Loria nella Papuasias orientale. Pesci d'acqua dolce.- *Ann. Mus. civ. St. nat. Giacomo Doria*, 2 (14): 546-553.
- 1897 Di alcuni pesci raccolti in Bolivia dal Prof. Luigi Balzan.- *Ann. Mus. civ. St. nat. Giacomo Doria*, 2 (18): 16-27.

Poll, M.

- 1967 Révision des Characidae nains africains.- *Annls. Mus. r. Afr. cent. Sc. zool.*, 162: 1-158.
- 1971 Révision des Synodontis africains (famille Mochocidae).- *Annls. Mus. r. Afr. cent. Sc.*

- Poll, M. (continued)
zool., 191: 1-497.
- Popta, C. M. L.
- 1904 Descriptions préliminaires des nouvelles espèces de poissons recueillies au Bornéo central par M. le Dr. A. W. Nieuwenhuis en 1898 et en 1900.- Notes Leyden Mus., 24: 201-202.
- 1905 Suite des descriptions préliminaires des nouvelles espèces de poissons recueillies au Bornéo central par M. le Dr. A. W. Nieuwenhuis en 1898 et en 1900.- Notes Leyden Mus., 25: 171-186.
- 1905 *Haplochilus sarasinorum* n. sp.- Notes Leyden Mus., 25: 239-247.
- Randall, J. E.
- 1980 Revision of the fish genus *Plectranthias* (Serranidae, Anthiinae) with descriptions of 13 new species.- *Micronesica*, 16 (1): 101-187.
- Regan, C. T.
- 1906 Descriptions of five new freshwater fishes from Sarawak, Borneo, collected by Dr. C. Hose.- *Ann. Mag. nat. Hist.*, 7 (18): 66-68.
- 1910 The Asiatic fishes of the family Anabantidae. *Proc. zool. Soc. London*, 54: 767-787.
- 1912 A revision of the South American Siluroid fishes of the genus *Corydoras*, with a list of the specimens in the British Museum

Regan, C. T. (continued)

(Natural History).- Ann. Mag. nat. Hist., 8 (10): 209-220.

1913 Description of two new fishes from Paranagua, Brazil, presented to the British Museum by Herr A. Rachow.- Ann. Mag. nat. Hist., 8 (11): 231-232.

1914 Report on the freshwater fishes collected by the British Ornithologists' Union Expedition and the Wollaston Expedition in Dutch New Guinea.- Trans. zool. Soc. London, 20: 275-286.

Rendahl, H.

1922 A contribution to the ichthyology of north-west Australia.- Meddr. zool. Mus., 5: 163-197.

Ribeiro, P. de Miranda

1942 Um novo "Corydoras" do Rio Javari, Amazonas, Brasil (Pisces, Callichthyidae).- Rev. Brasil. biol., Rio de Janeiro, 2 (4): 427-428.

1955 Tipos das espécies e subespécies do Prof. Alipio de Miranda Ribeiro depositados no Museu Nacional (com uma relação dos gêneros, espécies e subespécies descritos).- Arq. Mus. nac. Rio de Janeiro, 42 (1): 389-417.

Roberts, T. R.

1978 An ichthyological survey of the Fly River in Papua New Guinea with descriptions of new species.- Smithson. Contr. Zool., 281: 1-72.

Schindler, O.

1937 Eine neue Fischart (Characidae) aus Nordost

Schindler, O. (continued)

paraguay.- Anz. Akad. Wiss. Wien, 13: 1-2
(reprint).

Schultz, L. P.

1943 Fishes of the Phoenix and Samoan Islands
collected in 1939 during the expedition
of the U. S. S. "Bushnell".- Bull. U. S.
natn. Mus., 180: i-x, 1-316.

1944 The catfishes of Venezuela, with descrip-
tions of thirty-eight new forms.- Proc. U.
S. natn. Mus., 94: 173-338.

1944 The fishes of the family Characinidae from
Venezuela, with descriptions of seventeen
new forms.- Proc. U. S. natn. Mus., 95:
235-367.

1949 A further contribution to the ichthyology
of Venezuela.- Proc. U. S. natn. Mus., 99:
1-211.

Seegers, L. & J. H. Huber

1981 *Rivulus cryptocallus* n. sp. von der Insel
Martinique (Pisces, Atheriniformes, Cyprin-
odontidae).- Senckenb. biol., 61 (3-4): 169
177.

Smith, H. M.

1931 Descriptions of new genera and species of
Siamese fishes.- Proc. U. S. natn. Mus.,
79 (7): 1-48.

Smith, J. L. B

1933 The South African species of the genus *Hemi*

Smith, J. L. B. (continued)

rhamphus Cuv.- Trans. R. Soc. S. Afr., 21
(2): 129-150.

Stehman, M.

1976 Revision der Rajoiden-Arten des nördlichen
Indischen Ozean und Indopazifik (Elasmo-
branchii, Batoidea, Rajiformes).- Beaufortia,
24 (315): 133-175.

Steindachner, F.

1877 Über einige neue Fischarten, insbesondere
Characinen und Siluroiden aus dem Amazonen-
strome. Ichth. Beitr., V.- Sber. Akad. Wiss.
Wien, mathem.-naturwiss. Cl., 74 (1): 49-240.

1879 Über einige neue und seltene Fisch-Arten aus
den k. k. zoologischen Museen zu Wien, Stutt-
gart und Warschau.- Denkschr. Akad. Wiss.
Wien, mathem.-naturwiss. Cl., 41 (1): 1-52.

1881 [Das w. M. Herr Director Dr. Steindachner
übersendet zwei ichthyologische Abhandlungen
unter dem Titel: „Beiträge zur Kenntniss
der Flussfische Südamerika's (III)" und
„Ichthyologische Beiträge (XI)."].- Anz.
Akad. Wiss. Wien, mathem.-naturwiss. Cl.,
18 (11): 97-100.

1906 [Das w. M. Hofrat F. Steindachner berichtet
über zwei neue Corydoras-Arten aus dem Par-
nahyba- und Parahim-Flusse im Staate Piauhy,
welche von ihm während der zoologischen Ex-
pedition der kaiserl. Akademie der Wissen-
schaften im Jahre 1903 gesammelt wurden, ...]
Anz. Akad. Wiss. Wien, mathem.-naturwiss. Kl.

Steindachner, F. (continued)

43 (27): 478-480.

- 1907 [...über drei neue Characinen und eine neue kleine Corydoras-Art aus dem Stromgebiete des Parnahyba und San Francisco, ...].- Anz. Akad. Wiss. Wien, mathem.-naturwiss. Kl., 44 (6): 82-85.
- 1907 [Dr. Steindachner berichtet ferner über zwei neue Arten von Süßwasserfischen aus dem Stromgebiete des Parnahyba, welche von ihm während der zoologischen Expedition der kaiserl. Akademie nach Brasilien aufgefunden waren sowie über eine Abart von *Loricaria lima*, Kn. aus dem Jurua, ...etc.] Anz. Akad. Wiss. Wien, mathem.-naturwiss. Kl., 44 (10): 152-155.
- 1907 [Das w. M. Hofrat F. Steindachner berichtet über eine neue *Coridoras*-Art aus dem Rio Preto, einem sekundären Nebenflusse des Rio San Francisco, und eine *Xenocara*-Art aus dem Parnahyba bei Victoria und Sa. Filomena, welche von ihm während der zoologischen Expedition der kaiserl. Akademie der Wissenschaften nach Brasilien gesammelt wurden, ferner über die weite geographische Verbreitung von *Anacyrtus (Raeboides) prognathus* Blgr. und *Brachychalcinus longipinnis* (Popta) Steind.].- Anz. Akad. Wiss. Wien, mathem.-naturwiss. Kl., 44 (17): 290-293.
- 1908 [Das w. M. Herr Hofrat Franz Steindachner berichtet über eine im Rio Jaraguá bei

Steindachner, F. (continued)

- Joinville im Staate S. Catharina (Brasilien) vorkommende noch unbeschriebene Pseudochalceus-Art, Ch. affinis, sowie über eine neue Characinengattung und -art, Joinvillea rosea, von gleichem Fundorte].- Anz. Akad. Wiss. Wien, mathem.-naturwiss. Kl., 45 (5): 28-31.
- 1909 [Das w. M. Hofrat Franz Steindachner berichtet über eine neue Brachyplatystoma-Art aus der Umgebung von Pará, welche während der brasilianischen Expedition der kaiserl. Akademie auf dem Fischmarkt von Pará in einem Exemplar erworben wurde, sowie über eine noch unbeschriebene Loricaria-Art aus dem Jaraguá, ...etc.].- Anz. Akad. Wiss. Wien, mathem.-naturwiss. Kl., 46 (12): 195-197.
- 1910 [Das w. M. Hofrat F. Steindachner berichtet über eine neue Loricaria-Art aus dem Flussgebiete des Jaraguá und der Ribeira im Staate S. Paulo und Sa. Catharina, über eine mit Ancistrus aculeatus (Perugia) = Ancistrus gigas (Blgr.) Reg. sehr nahe verwandte Ancistrus-Art aus dem Rio S. Francisco bei Barra, über eine neue Corydoras-Art aus dem Jaraguá und über die äusseren Geschlechtsunterschiede von Corydoras kronei, Ribeira].- Anz. Akad. Wiss. Wien, mathem.-naturwiss. Kl., 47 (8): 57-62.
- 1915 Beiträge zur Kenntnis der Flussfische Südamerika's V.- Denkschr. Akad. Wiss. Wien, mathem.-naturwiss. Kl., 93: 15-106, 13 pls (reprint : 1-92).

Taphorn, D. C. & Thomerson, J. E.

- 1978 A revision of the South American Cyprinodont fishes of the genera *Rachovia* and *Austrofundulus*, with the description of a new genus.- *Acta Biol. Venez.*, 9 (4): 377-452.

Vinciguerra, D.

- 1890 Viaggio di Leonardo Fea in Birmania e regioni vicine.- *Ann. Mus. civ. St. nat. Giacomo Doria*, 2 (9): 129-362.

Weber, M.

- 1894 Die Süßwasser-Fische des indischen Archipels, nebst Bemerkungen über den Ursprung der Fauna von Celebes.- *Zool. Ergebn.*, 3: 405-476.
- 1895 Fische von Ambon, Java, Thursday Island, dem Burnett-Fluss und von der Süd-Küste von Neu-Guinea.- *Zool. Forsch. Aust. Malay. Arch.*, 5: 157-276.
- 1897 Beiträge zur Kenntniss der Fauna von Süd-Afrika I. Zur Kenntniss der Süßwasser-Fauna von Süd-Afrika.- *Zool. Jb.*, 10: 135-199.
- 1905 *Fierasfer sluiteri* n. sp.- *Tijdschr. ned. Dierk. Vereen.*, (2) 9: 4.
- 1907 Eine zoogeographische Prophezeiung.- *Zool. Anz.*, 32 (14): 401-404.
- 1908 Süßwasserfische von Neu-Guinea. Ein Beitrag zur Frage nach dem früheren Zusammenhang von Neu-Guinea und Australien.- *Nova Guinea*

Weber, M. (continued)

(Zool.), 5 (2): 201-267.

- 1909 Diagnosen neuer Fische der Siboga-Expedition.-
Notes Leyden Mus., 31: 143-169.
- 1909 Eine neue Art von *Macrorhamphosus* und Revision
dieses Genus.- Tijdschr. ned. Dierk. Vereen.,
(2) 11 (2): 71-79.
- 1910 Neue Fische aus niederländisch Süd-Neu-
Guinea.- Notes Leyden Mus., 32: 225-240.
- 1911 Die Fische der Aru- und Kei- Inseln. Ein
Beitrag zur Zoogeographie dieser Inseln.-
Abh. Senckenb. naturforsch. Ges., 34: 1-49.
- 1912 Versuch einer Revision der indopacifischen
Anguillidae.- Zool. Jb., Suppl. 15 (1): 569-
596.
- 1913 Die Fische der Siboga-Expedition.- Siboga
Exped., 57: 1-710.
- 1913 Neue Beiträge zur Kenntniss der Süßwasser-
fische von Celebes. Ergebnisse einer Reise
von E. C. Abendanon in Celebes.- Bijdr.
Dierk., 19: 197-213.
- 1913 Süßwasserfische aus niederländisch Süd-
und Nord-Neu Guinea.- Nova Guinea (Zool.),
9 (4): 513-613.

Weber, M. & L. F. de Beaufort

- 1912 Contributions to the knowledge of Indo-Austr-
alian fishes.- Verh. K. Ned. Akad. Wet.,

Weber, M. & L. F. de Beaufort (continued)

- 17 (3): 3-21.
- 1912 Fische.- In: A. Maass, "Durch Zentral-Sumatra", 2: 1-20 (reprint).
- 1913 The fishes of the Indo-Australian Archipelago, II. Malacopterygii, Myctophoidea, Ostariophysi, I: Siluroidea, : i-xx, 1-404 (E. J. Brill, Leiden).
- 1913 Über neue Fische von Neu-Kaledonien.- Zool. Anz., 42 (4): 172-174.
- 1915 Fische aus dem Süßwasser von Nias.- In: Kleiweg de Zwaan, "Die Insel Nias bei Sumatra", : 1-12 (reprint).
- 1915 Les poissons d'eau douce de la Nouvelle-Calédonie.- Nova Caledonia, Zool., 2 (1-2): 17-41.
- 1916 The fishes of the Indo-Australian Archipelago, III. Ostariophysi, II: Cyprinoidea, Apodes, Synbranchii, : i-xv, 1-455 (E. J. Brill, Leiden).
- 1922 The fishes of the Indo-Australian Archipelago, IV. Heteromi, Solenichthyes, Synentognathi, Percesoces, Labyrinthici, Microcyprini, : i-xiii, 1-410 (E. J. Brill, Leiden)
- 1929 The fishes of the Indo-Australian Archipelago, V. Anacanthini, Allotriognathi, Heterosomata, Berycomorphi, Percomorphi, : i-xiv, 1-458 (E. J. Brill, Leiden).

Weber, M. & L. F. de Beaufort (continued)

1931 The fishes of the Indo-Australian Archipelago, VI. Perciformes (continued), : i-xii, 1-448 (E. J. Brill, Leiden).

1936 The fishes of the Indo-Australian Archipelago, VII. Perciformes (continued), : i-xvi, 1-607 (E. J. Brill, Leiden).

Weitzman, S. H.

1960 Figures and descriptions of four South American catfishes of the genus *Corydoras*, including two new species.- Stanford ichth. Bull., 7 (4): 140-154.

1961 A new catfish, *Corydoras concolor* (Callichthyidae) from Venezuela.- Proc. biol. Soc. Washington, 74: 105-110.

Weitzman, S. H. & W. L. Fink

1971 A new species of Characid fish of the genus *Nematobrycon* from the Rio Calima of Colombia (Pisces, Characoidei, Characidae).- Beaufortia, 19 (248): 57-77.

Weitzman, S. H. & H. Nijssen

1970 Four new species and one new subspecies of the catfish genus *Corydoras* from Ecuador, Colombia and Brazil (Pisces, Siluriformes, Callichthyidae).- Beaufortia, 18 (233): 119-132.

Whitley, G. P.

1938 Descriptions of some New Guinea fishes.- Rec. Aust. Mus., 20 (3): 223-233.

Winterbottom, R.

- 1974 A new species of Anostomid Characoid fish, *Anostomus spiloclistron*, from the Nickerie river system of western Surinam (Pisces, Cypriniformes, Anostomidae).- *Beaufortia*, 21 (283): 153-163.

INDEX

- aaldereni, Hemipimelodus 53
 abendanoni, Telmatherina 78
 abnormis, Achirus 107
 abramoides, Astyanax 14
 Abudefduf filiger 83
 Abudefduf hemicyaneus 83
 abuelo, Sovichthys 62
 Acanthemblamaria spinosa 93
 Acanthocharax microlepis 13
 Acanthophaelus bifurcus 69
 Acanthopthalmus lorentzi 26
 Acanthopthalmus muraeniformes 26
 Acanthopthalmus vermicularis 26
 Acestrorhynchus altus 13
 Achirus abnormis 107
 acipenserinus, Hemiodon 53
 acrocephalus, Arius 37
 acus, Coelorhynchus 66
 acus venezuelensis, Farlowella 51
 acuticephala, Danio 28
 acutirostris, Muraenichthys 9
 Adrianichthys kruyti 69
 adujai, Iguanodectes 21
 aeglefinus, Paracentropogon 81
 Aequidens potaroensis 83
 Aeschrichthys goldiei 91
 affinis, Cyttominus 79
 affinis, Pseudorhombus 106
 affinis, Rhombatractus 75
 agassizii, Corydoras 42
 agilae, Rivulus 70
 agnesae, Moenkhausia 21
 albater, Aspidoras 38
 albofasciata, Scorpaena 82
 albofasciatus, Pimelodus 60
 albomarginatus, Pseudopimelodus 61
 alcocki, Halimochirurgus 109
 alcockii, Gobius 98
 alepidotus, Noemacheilus rupecola 32
 Alestopetersius xenurus tumbensis 13
 aloikae, Bunocephalus amaurus 39
 alta, Crenicichla 87
 Alticus semicrenatus 93
 Alticus triangulus 93
 altipinna, Pseudorasbora 32
 altus, Acestrorhynchus 13
 Aluterus blankerti 109
 amadi, Gobius 98
 amapaensis, Corydoras 42
 Ambassis confinis confinis 84
 Ambassis confinis occidentalis 84
 Ambassis interrupta reticulatus 84

amphisquamata, Homaloptera 29
 analis, Hemigrammus 18
 anambarensis, Noemacheilus 31
 Andamia cyclocheilus 93
 Anguilla spengeli 7
 anguillaris, Gymnotus 25
 angusticauda, Muraena 9
 angustiformis, Periophthalmus dipus 102
 Anisochaetodon trivirgatus 84
 annae, Nematochromis 88
 annandalei, Raja 7
 annator, Craterocephalus 73
 annitae, Parasalanx 11
 annulatus, Anticitharus 106
 annulatus, Callionymus 95
 anoplus, Barbus 26
 Anostomus anostomus longus 13
 Anostomus brevior 13
 Anostomus spiloclistron 13
 Antennarius cryptacanthus 64
 Anticitharus annulatus 106
 Antigonia malayana 79
 Aphoristia microrhynchus 107
 Aphyocharax erythrurus 14
 Aphyocypris normalis 26
 Apistogramma cacatuoides 84
 Apistogramma nijsseni 85
 Apistogramma resticulosa 85
 apithanos, Pseudohemiodon 61
 Apodocreedia vanderhorsti 92
 Apogon argyrogaster 85
 Apogon beauforti 85
 Apogon bilaciniatus 85
 Apogon brevicaudatus 85
 Apogon dammermani 85
 Apogon gjellerupi 85
 Apogon heurni 86
 Apogon ocellatus 86
 Apogon sandei 86
 Apogon trifasciatus 86
 Apogon tubulatus 86
 Apogon wichmanni 86
 Apterygocampus epinnulatus 79
 archipelagicus, Hemiramphus 67
 argus, Coelorhynchus 66
 argus, Pseudorhombus 106
 argyrogaster, Apogon 85
 arifi, Schistura 35
 Arius acrocephalus 37
 Arius carinatus 37
 Arius digulensis 37
 Arius nudidens 38
 armatus, Callichthys 40
 armatus, Solenostomus 80

- Arnoglossus elongatus* 106
Arnoglossus profundus 106
artifrons, *Cyprinodon variegatus* 70
aruensis, *Bostrychus* 96
aruensis, *Eleotris* 96
Aseraggodes dubius 107
Aseraggodes filiger 107
Aseraggodes microlepidotus 107
Aseraggodes texturatus 108
Aspidoras albater 38
Aspidoras brunneus 38
Aspidoras carvalhoi 38
Aspidoras eurycephalus 38
Aspidoras fuscoguttatus 38
Aspidoras maculosus 38
Aspidoras menezesi 39
Aspidoras poecilus 39
Aspidoras spilotus 39
Aspidoras virgulatus 39
Astroblepus phelpsi 39
Astyanax abramoides 14
Astyanax essequibensis 14
Astyanax guianensis 14
Astyanax mutator 14
Atherinichthys nouhuysi 72
atra, *Lambertia* 56
atromaculatus, *Gnathopogon* 28
atropersonatus, *Corydoras* 42
aubyni, *Pristella* 24
Auchenipterus brevior 39
Austrofundulus stagnalis 69
axelrodi, *Brittanichthys* 15
axelrodi, *Chilatherina* 72
Axelrodia lindeae 14
Axelrodia riesei 14
- Barbus anoplus* 26
Barbus breyeri 26
Barbus dezwaani 27
Barbus hexazona 27
Barbus lineatus 27
Barbus pahangensis 27
Barbus viviparus 27
Barilius dogarsinghi 27
Bathyclupea malayana 87
Bathygadus dubiosus 66
Bathytroctes calcaratus 12
bayano, *Eretmobrycon* 17
beauforti, *Apogon* 85
beauforti, *Cynoglossus* 108
beauforti, *Gobius* 98
beauforti, *Zenarchopterus* 69
Bedotia geayi 72
Betta patoti 105

Betta splendens 105
bicirrhosus, *Gobius* 98
bicolor, *Corydoras* 42
bicolor, *Labeo* 29
bicornis, *Paracrossochilus* 32
bifasciatus, *Corydoras* 43
bifasciatus, *Duboisialestes* 17
bifasciatus, *Nannostomus* 3, 23
bifurcus, *Acanthophaelus* 69
bilaciniatus, *Apogon* 85
billitonensis, *Mastacembelus* 105
bilobatus, *Cypsilurus* 67
binghami, *Ceratobranchia* 15
blankerti, *Aluterus* 109
bleekeri, *Salarias* 95
blennioides, *Characidium* 16
Blennius niger 94
Blennius rioudourensis 94
blochi, *Corydoras* 43
Boehlkea fredcochui 14
boekei, *Callionymus* 96
boekei, *Doratonotus* 92
boekei, *Melanorhinus* 73
boesemani, *Corydoras* 43
boldinghi, *Pleurosicya* 103
bolteni, *Callichthys callichthys* 40
bonairensis, *Rivulus marmoratus* 71
bonti, *Telmatherina* 78
borneensis, *Parioglossus* 101
boschmae, *Pristipoma* 89
Bostrychus aruensis 96
Bostrychus zonatus 96
bovallii, *Poecilocharax* 24
Brachysomophis kampeni 8
Brannorella sluiteri 94
brasiliensis, *Saurida* 12
braueri, *Chiasmodon* 92
braueri, *Stylophthalmus* 12
brevicauda, *Osteochilus* 32
brevicauda, *Thryssa* 11
brevicaudatus, *Apogon* 85
brevidorsalis, *Doryrhamphus* 80
brevior, *Anostomus* 13
brevior, *Auchenipterus* 39
brevis, *Cypsilurus* 67
brevis, *Sicyopterus* 104
breyeri, *Barbus* 26
briareos, *Chilomycterus* 110
britskii, *Parotocinclus* 60
Brittanichthys axelrodi 15
browni, *Moenkhausia* 22
brunnea, *Narcine* 7
brunnea, *Tatia* 62
brunneus, *Aspidoras* 38

bruynisi, Schismatogobius 103
 Bryconamericus deuterodonoides euryodous 15
 Bryconella haraldi 15
 Bryconops inpai 15
 buitendijki, Neenchelys 9
 Bumocephalus amaurus aloikae 39
 Bumocephalus amaurus sipaliwini 40
 butcheri, Pseudopimelodus villosus 61

 cacatuoides, Apistogramma 84
 caeruleostigmata, Laubuca 30
 calancalae, Myxus 91
 calcaratus, Bathytroctes 12
 Callechelys sibogae 8
 Callichthys armatus 40
 Callichthys callichthys bolteni 40
 Callichthys callichthys demararae 40
 callionymi, Tripterygion 95
 Callionymus annulatus 95
 Callionymus boekei 96
 Callionymus sanctieustatii 96
 Callogobius centrolepis 96
 Callyodon verweyi 91
 carinata, Farlowella 51
 carinatus, Arius 37
 carinatus, Lethrinus 88
 Carnegiella strigata surinamensis 15
 carvalhoi, Aspidoras 38
 cataphracta, Loricaria 57
 catherinae, Rhombatractus 76
 caudocarinatus, Doryichthys 80
 caudovittatus, Hemiramphus 68
 cavifrons, Gobius 98
 cayennae, Hoplosternum thoracatum 54
 cayennensis, Hemigrammus unilineatus 19
 celebensis, Haplochilus 70
 celebensis, Nomorhamphus 69
 centrolepis, Callogobius 96
 Centromochlus leopardus 40
 Ceratobranchia binghami 15
 Cercomites flagellifer 8
 Cetopsorhamdia picklei 40
 Cetopsorhamdia pijpersi 41
 Chaetostoma anomala sovichthys 41
 Chalixodytes tauensis 92
 Characidium blennioides 16
 Characidium chupa chupa 16
 Characidium vintoni 16
 Characidium voladorita 16
 Characidium zebra 16
 Chasmocranus longior 41
 Cheilinus cingulatus 92
 Cheilodipterus subulatus 87
 Cheirodon dialepturus 16

Cheirodon gracilis 16
Cheirodon gracilis littoris 16
Cheirodon kriegi 17
Chelidoperca margaritifera 87
Chiasmodon braueri 92
Chilatherina axelrodi 72
Chilomycterus briareos 110
Chilomycterus hardenbergi 110
Chromis natalensis 87
Chromis philander 87
Chromis retrofasciatus 87
chupa chupa, *Characidium* 16
cingulatus, *Cheilinus* 92
cirrrosa, *Loricaria* 57
Clarias theodora 41
Clupea koningsbergi 10
clupeiformes, *Rhabdamia* 89
Clupeoides venulosus 10
Clupisoma naziri 41
Cobitis aurata vallahica 27
cobrensis, *Pseudancistrus pediculatus* 61
Cochliodon pospisili 41
Cocotropus dezwaani 81
Cocotropus obbesi 81
coecus, *Taenioides* 104
Coelorhynchus acus 66
Coelorhynchus argus 66
Coelorhynchus macrorhynchus 66
colletti, *Linophryne* 65
Compsomidiana medium 108
concolor, *Corydoras* 43
concolor, *Tatia* 63
condiscipulus, *Corydoras* 44
confinis, *Ambassis confinis* 84
Congrellus roosendaali 8
connieae, *Popondetta* 75
conorhynchus, *Tetranesodon* 63
convexus, *Hemiramphus* 68
Copidoglanis equinus 41
Copidoglanis gjellerupi 41
Copidoglanis meraukensis 42
Copidoglanis novaeguineae 42
coppenamensis, *Corydoras bondi* 43
coppenamensis, *Hypostomus* 54
coprophagus, *Pimelodus clarias* 60
corantijni, *Hypostomus* 55
coropinae, *Gymnotus* 25
corrugatus, *Syngnathus* 3, 80
corti, *Schizodon fasciatum* 24
Corydoras agassizii 42
Corydoras amapaensis 42
Corydoras atropersonatus 42
Corydoras bicolor 42
Corydoras bifasciatus 43

Corydoras blochi blochi 43
Corydoras blochi vittatus 43
Corydoras boesemani 43
Corydoras bondi coppenamensis 43
Corydoras concolor 43
Corydoras condiscipulus 44
Corydoras dubius 44
Corydoras ehrhardti 44
Corydoras elegans 44
Corydoras ephippifer 44
Corydoras eques 44
Corydoras garbei 45
Corydoras gossei 45
Corydoras gracilis 45
Corydoras guianensis 45
Corydoras habrosus 45
Corydoras heteromorphus 45
Corydoras julii 46
Corydoras macropterus 46
Corydoras maculifer 46
Corydoras marmoratus 46
Corydoras micracanthus 46
Corydoras multimaculatus 47
Corydoras myersi 47
Corydoras nanus 47
Corydoras narcissus 47
Corydoras nattereri triseriatus 47
Corydoras octocirrus 47
Corydoras oelemariensis 48
Corydoras oiapoquensis 48
Corydoras ornatus 48
Corydoras orphnopterus 48
Corydoras ourastigma 48
Corydoras oxyrhynchus 48
Corydoras panda 49
Corydoras pastazensis orcesi 49
Corydoras prionotos 49
Corydoras pulcher 49
Corydoras raimundi 49
Corydoras reynoldsi 49
Corydoras robustus 49
Corydoras sanchesi 50
Corydoras saramaccensis 50
Corydoras schwartzi surinamensis 50
Corydoras septentrionalis 50
Corydoras simulatus 50
Corydoras spilurus 50
Corydoras steindachneri 51
Corydoras treitlii 51
Corydoras weitzmani 51
Corydoras wotroi 51
Corydoras xinguensis 51
Coryphaenoides sibogae 66
Cosmochilus falcifer 28

- Cottunculus gyrinoides* 81
crassispinosus, *Rhombatractus* 76
Craterocephalus annator 73
Craterocephalus dalhousiensis 73
Creagrutus hildebrandi 17
Crenicichla alta 87
crenulatus, *Salarias* 95
crenulatus, *Syngnathus* 80
Crepidogaster indicus 63
Crossochilus gnathopogon 28
cryptacanthus, *Antennarius* 64
cryptocallus, *Rivulus* 71
Crystalloxytes cookei enderburyensis 92
cuchillejo, *Sternarchogiton* 25
cupido, *Trachymochlus* 63
curacao, *Gobius* 98
Curimatus esperanzae pijpersi 17
Curimatus morawhanna 17
curtistigma, *Schistura* 35
cyclocheilus, *Andamia* 93
cylindricus, *Hemigrammus* 18
cynocephalus, *Paracentropogon* 82
Cynoglossus beauforti 108
Cynoglossus heterolepis 3, 108
Cynoglossus sibogae 108
Cyprinodon salinus 69
Cyprinodon variegatus artifrons 70
cypselurus, *Rhabdamia* 89
Cypsilurus bilobatus 67
Cypsilurus brevis 67
Cyrtocharax magdalenae venezuelae 17
Cyttomimus affinis 79
Cyttula macropus 79
- daillyi*, *Hoplosternum littorale* 53
dalhousiensis, *Craterocephalus* 73
dammermani, *Apogon* 85
Danio acuticephala 28
demararae, *Callichthys callichthys* 40
depressirostris, *Pseudorasbora* 32
Deuterodon pinnatus 17
dewaali, *Gobius* 99
dewegeri, *Serranus* 90
dezwaani, *Barbus* 27
dezwaani, *Cocotropus* 81
dezwaani, *Pangasius* 59
dialepturus, *Cheirodon* 16
Diaphus malayanus 12
Diaphus suborbitalis 12
Dibranchius infranudus 64
Dicrolene hubrechtii 65
dientonito, *Roeboides* 24
digulensis, *Arius* 37
dinocephala, *Muraena* 9

- dogarsinghi, Barilius 27
 Doilichthys novaeguineae 51
 Doratonotus boekei 92
 doriae, Eucirrhichthys 28
 Dormitator lophocephalus 96
 dorsimaculatus, Tyttobrycon 25
 dorsiocellata, Rasbora 33
 Doryichthys caudocarinatus 80
 Doryrhamphus brevidorsalis 80
 dubiosus, Bathygadus 66
 dubiosus, Scolopsis 89
 dubius, Aseraggodes 107
 dubius, Corydoras 44
 Duboisialestes bifasciatus 17
 dumasi, Melanotaenia 73
 dunckeri, Syngnathus 81

 ecuadorensis, Hyphessobrycon 19
 ehrhardti, Corydoras 44
 elegans, Corydoras 44
 eleotrioides, Jobertina 21
 Eleotris aruensis 96
 Eleotris fimbriatus 96
 Eleotris herwerdenii 97
 Eleotris heterodon 97
 Eleotris mertoni 97
 Eleotris nesolepis 97
 elongatus, Arnoglossus 106
 elongatus, Scolopsis 90
 emanueli, Pygidium 62
 Empetrichthys latos latos 70
 Enchelyurus flavipes nigerrima 94
 enderburyensis, Crystallodytes cookei 92
 Engraulicypris spinifer 28
 engraulis, Hemiculterella 29
 eos, Hyphessobrycon 20
 ephippifer, Corydoras 44
 epinnulatus, Apterygocampus 79
 eques, Corydoras 44
 equinus, Copidoglanis 41
 Eretmobrycon bayano 17
 erythrozonus, Hemigrammus 18
 erythrurus, Aphyocharax 14
 essequibensis, Astyanax 14
 Eucirrhichthys doriae 28
 eulepidotus, Tetrodon 110
 eurycephalus, Aspidoras 38
 euryodous, Bryconamericus deuterodonoides 15
 Eustira maassi 28
 Evermannichthys metzelaari 97
 Eviota gymnocephalus 97
 exquisita, Melanotaenia 73

 falcifer, Cosmochilus 28

- fallax*, *Loricaria* (*Loricariichthys*) 58
fallax, *Symphurus* 4, 109
Farlowella acus venezuelensis 51
Farlowella carinata 51
Farlowella parvicarinata 52
Farlowella reticulata 52
Farlowella rugosa 52
fasciatum, *Tripterygion* 95
fasciatus, *Macrurus* 66
fasciatus, *Rhombatractus* 76
fascimaculata, *Schistura* 36
ferventer, *Gibbonsia metzi* 94
Fierasfer sluiteri 65
filifer, *Abudefduf* 83
filiger, *Aseraggodes* 107
fimbriatus, *Eleotris* 96
fistulosa, *Foa* 3, 88
flagellifer, *Cercomites* 8
floresiana, *Moringua* 9
fluctuans, *Petroscirtes* 94
Foa fistulosa 3, 88
Foa longimana 88
formosa, *Rineloricaria* 62
fowleri, *Pseudorasbora* 33
fredcochui, *Boehlkea* 14
fumosa, *Halieutaea* 64
furcatus, *Lepidocephalus* 30
fuscoguttatus, *Aspidoras* 38
- gabonensis*, *Grasseichthys* 11
Galaxias neocaledonicus 11
garbei, *Corydoras* 45
Garmanella pulchra 70
Gasteropelecus sternicla morae 18
geayi, *Bedotia* 72
geisleri, *Iguanodectes* 21
geisleri, *Nannaethiops* 22
georgetti, *Hyphessobrycon* 20
georgiae, *Moenkhausia* 22
Gephyrocharax venezuelae 18
gertrudae, *Pseudomugil* 75
geryi, *Pimelodella* 60
Gibbonsia metzi ferventer 94
gjellerupi, *Apogon* 85
gjellerupi, *Copidoglanis* 41
gjellerupi, *Sphagebranchus* 9
Glossolepis incisus 73
Glossolepis wanamensis 73
Glyptothorax punjabensis 52
Glyptothorax stocki 52
Gnathopogon atromaculatus 28
gnathopogon, *Crossochilus* 28
Gobiesox sanctimartini 63
Gobiesox vittatus 64

Gobio rivuloides 28
 Gobiosoma horsti 98
 Gobius alcockii 98
 Gobius amadi 98
 Gobius beauforti 98
 Gobius bicirrhosus 98
 Gobius cavifrons 98
 Gobius curacao 98
 Gobius dewaali 99
 Gobius hipoliti 99
 Gobius labiatus 99
 Gobius longimanus 99
 Gobius matanensis 99
 Gobius mertonii 99
 Gobius notonema 99
 Gobius ophthalmicus 100
 Gobius oyensi 100
 Gobius reticularis 100
 Gobius roemeri 100
 Gobius rouxi 100
 Gobius scapulopunctatus 100
 Gobius senegambiensis 100
 Gobius stigmatophorus 100
 Gobius triangularis 101
 Gobius uronema 101
 Gobius villosus 101
 goethei, Hoplocharax 19
 goldiei, Aeschrichthys 91
 gossei, Corydoras 45
 gracilicirrhus, Umbrina 91
 gracilis, Cheirodon 16
 gracilis, Corydoras 45
 gracilis, Melanotaenia 73
 grandisquama, Nematops 106
 grandisquamis, Platycephalus 83
 Grasseichthys gabonensis 11
 griemi, Hyphessobrycon 20
 grimaldii, Hymenocephalus 66
 griseus, Loricaria 57
 guianense, Hypoptopoma 54
 guianensis, Astyanax 14
 guianensis, Corydoras 45
 guyanensis, Hemigrammus 19
 gymnauchen, Tripterygion 95
 gymnocephalus, Eviota 97
 Gymnocorymbus socolofi 18
 Gymnothorax megapterus 8
 Gymnotus anguillaris 25
 Gymnotus coropinae 25
 gyrinoides, Cottunculus 81

 habbema, Therapon 90
 habrosus, Corydoras 45
 hainanensis, Rasborinus 35

Halicmetus ruber marmorata 64
Halieutaea fumosa 64
Halieutaea indica 64
Halieutaea stellata vittata 65
Halimochirurgus alcocki 109
Haliopsis malayanus 94
Haplochilus celebensis 70
Haplochilus sarasinorum 70
Haplochilus timorensis 70
haraldi, *Bryconella* 15
hardenbergi, *Chilomycterus* 110
harnaiensis, *Noemacheilus* 31
Harttia nijsseni 42
Harttia surinamensis 53
hazaraensis, *Noemacheilus griffithi* 31
Helgia modesta 29
Helotes lorentzi 88
Hemibrycon dentatus jabonero 18
Hemibrycon surinamensis 18
Hemiculterella engraulis 29
hemicyaneus, *Abudehduf* 83
hemigrammoides, *Moenkhausia* 22
Hemigrammus analis 18
Hemigrammus cylindricus 18
Hemigrammus erythrozonus 18
Hemigrammus guyanensis 19
Hemigrammus orthus 19
Hemigrammus paipayensis 19
Hemigrammus rodwayi
Hemigrammus unilineatus cayennensis 19
Hemigrammus vorderwinkleri 19
Hemiodon acipenserinus 53
Hemipimelodus aaldereni 53
Hemipimelodus macrorhynchus 53
Hemipimelodus velutinus 53
Hemiramphus archipelagicus 67
Hemiramphus caudovittatus 68
Hemiramphus convexus 68
Hemiramphus orientalis 68
Hemiramphus (Zenarchopterus) kampeni 68
Hemiramphus (Zenarchopterus) novaeguineae 68
Hemirhamphus knysnaensis 69
Hemirhamphus peitaihoensis 69
Hemisilurus moolenburghi 53
Hepatus weberi 105
herbertaxelrodi, *Melanotaenia* 74
herwerdenii, *Eleotris* 97
heterodon, *Eleotris* 97
Heterogramma ortmanni 88
heterolepis, *Cynoglossus* 3, 108
heterolepis, *Homaloptera* 29
heteromorpha, *Rasbora* 33
heteromorphus, *Corydoras* 45
heteroptera, *Rineloricaria* 62

- heurni, Apogon 86
 hexazona, Barbus 27
 heyningeni, Macrurus 66
 heyningi, Sphagebranchus 10
 hildebrandi, Creagrutus 17
 hipoliti, Gobijs 99
 Hippocampus spinosissimus 80
 Histioclinus veliger 94
 hjorti, Leptocephalus 8
 Homaloptera amphisquamata 29
 Homaloptera heterolepis 29
 Homaloptera lepidogaster 29
 Homaloptera weberi 29
 Hoplocharax goethei 19
 Hoplosternum littorale daillyi 53
 Hoplosternum thoracatum cayennae 54
 Hoplosternum thoracatum surinamensis 54
 horai, Platycephalus 83
 horsti, Gobiosoma 98
 hubrechtii, Dicrolene 65
 hummelincki, Rachovia 70
 huysmani, Samariscus 107
 huysmani, Sphagebranchus 10
 Hymenocephalus grimaldii 66
 Hyphessobrycon ecuadorensis 19
 Hyphessobrycon eos 20
 Hyphessobrycon georgetti 20
 Hyphessobrycon griemi 20
 Hyphessobrycon rosaceus 20
 Hyphessobrycon rubrostigma 20
 Hyphessobrycon saizi 20
 Hyphessobrycon stictus 20
 Hyphessobrycon tenuis 29
 Hyphessobrycon vilmae 21
 Hypoptopoma guianense 54
 Hypostomus coppenamensis 54
 Hypostomus corantijni 55
 Hypostomus gymnorhynchus tapanahoniensis 55
 Hypostomus micromaculatus 55
 Hypostomus nickeriensis 55
 Hypostomus pseudoheмиurus macrophthalmus 55
 Hypostomus pseudoheмиurus pseudoheмиurus 55
 Hypostomus saramaccensis 55
 Hypostomus surinamensis 56
 Hypostomus ventromaculatus 56

 Ichthyocampus kampeni 80
 ifati, Thayeria 24
 incisus, Glossolepis 73
 inconspicuus, Pseudomugil 75
 indica, Halieutaea 64
 indicus, Crepidogaster 63
 indicus, Leptocephalus 8
 infranudus, Dibranchus 64

- inpai, Bryconops 15
 intermedia, Pomacentrus fasciatus 88
 intermedius, Osteochilus 32
 Iguanodectes adujai 21
 Iguanodectes geisleri 21
 irrorata, Lepidocephalichthys 30

 jaarmani, Oxyurichthys 101
 jabonero, Hemibrycon dentatus 18
 jacobsoni, Rasbora 33
 jaraguensis, Loricaria 57
 Jobertina electrioides 21
 Joinvillea rosae 21
 jokeannae, Trachycorystes 63
 julii, Corydoras 46

 kampeni, Brachysomophis 8
 kampeni, Hemiramphus (Zenarchopterus) 68
 kampeni, Ichthyocampus 80
 kampeni, Pellona 11
 kerberti, Odontonema 93
 klazingai, Sphagebranchus 10
 klunzingeri, Pardachirus 108
 knysnaensis, Hemiramphus 69
 kochi, Petroscurtes 94
 kochi, Rhombatractus 76
 kohatensis, Schistura 36
 koningsbergi, Clupea 10
 kriegi, Cheirodon 17
 kruyti, Adrianichthys 69
 kuiperi, Noemacheilus 31

 Labeo bicolor 29
 Labeobarbus longipinnis 29
 Labeobarbus nanningsi 30
 labiatus, Gobius 99
 lacortei, Nematobrycon 23
 lacustris, Microgobius 101
 lagoichthys, Loricaria gymnogaster 57
 Lambertia atra 56
 Lasiancistrus maracaiboensis 56
 laterisquamatus, Oxyurichthys 101
 latos, Empetrichthys 70
 Laubuca caeruleostigmata 30
 leiacanthus, Leiocassis 56
 Leiocassis leiacanthus 56
 Leiogaster melanopus 79
 lentiginosa, Loricaria prolixa 58
 leopardus, Centromochlus 40
 Lepadichthys minor 64
 Lepidarchus adonis signifer 21
 Lepidoblepharon ophthalmolepis 106
 lepidocaulis, Schistura kessleri 36
 Lepidocephalichthys irrorata 30

- Lepidocephalus furcatus* 30
lepidogaster, Homaloptera 29
Leptobarbus melanopterus 30
Leptocephalus hjorti 8
Leptocephalus indicus 8
Leptocephalus peterseni 8
Leptocephalus schmidtii 9
Leptodoras linnelli 56
Lethrinus carinatus 88
Leucogobio polytaenia 30
limoncochae, Rivulus 71
lindeae, Axelrodia 14
lineatus, Barbus 27
linnelli, Leptodoras 56
Linophryne colletti 65
Lissochilus smedleyi 30
Lissochilus sumatranus 30
litaniensis, Parupygus 25
lithoides, Lithoxus 57
Lithoxus lithoides 57
littoris, Cheirodon gracilis 16
longifilis, Physiculus 65
longifilis, Sicyopterus 104
longimana, Foa 88
longimanus, Gobius 99
longimanus, Pteranthias 89
longior, Chasmocranus 41
longipectoralis, Polynemus 91
longipinnis, Labeobarbus 29
longus, Anostomus anostomus 13
Lophius papillosus 64
lophocephalus, Dormitator 96
lorentzi, Acanthopthalmus 26
lorentzi, Helotes 88
lorentzi, Rhombatractus 77
lorentzi, Toxotes 91
Loricaria cataphracta 57
Loricaria cirrhosa 57
Loricaria griseus 57
Loricaria gymnogaster lagoichthys 57
Loricaria jaraguensis 57
Loricaria (Loricariichthys) fallax 58
Loricaria nickeriensis 57
Loricaria parnahybae 57
Loricaria prolixa 58
Loricaria prolixa lentiginosa 58
Loricaria spixii 58
Loricaria variegata venezuelae 58
Loricariichthys platymetopon 58

maassi, Eustira 28
maassi, Vaillantella 37
machensis, Noemacheilus horai 31
mackayana, Torpedo 7

macrocephalus, *Platycephalus* 83
macrolepis, *Schistura* 36
macrophthalmus, *Hypostomus pseudohemiurus* 55
macrophthalmus, *Quisquilius* 103
macropterus, *Corydoras* 46
macropus, *Cyttula* 79
Macrorhamphosus schoteli 79
macrorhynchus, *Coelorhynchus* 66
macrorhynchus, *Hemipimelodus* 53
Macrurus fasciatus 66
Macrurus heyningeni 66
Macrurus richardi 67
Macrurus tydemani 67
macturki, *Pimelodella* 60
maculata, *Melanotaenia*
maculata, *Parasturisoma* 59
maculata, *Rasbora* 34
maculifer, *Corydoras* 46
maculosus, *Aspidoras* 38
maculosus, *Tylobronchus* 25
malayana, *Antigonia* 79
malayana, *Bathyclupea* 87
malayanus, *Diaphus* 12
malayanus, *Haliopsis* 94
malayanus, *Melamphaes* 78
malayanus, *Neobythites* 65
malayanus, *Synagrops* 90
manaensis, *Rivulus* 71
maracaiboensis, *Lasiancistrus* 56
marginatus, *Nannostomus* 23
margaritifera, *Chelidoperca* 87
mariae, *Oloplotosus* 59
marmorata, *Halicmetus ruber* 64
marmoratus, *Corydoras* 46
Mastacembelus billitonensis 105
matanensis, *Gobius* 99
matthesi, *Synodontis* 62
medium, *Compsomidiana* 108
Megalamphodus roseus 21
megalops, *Pimelodella* 60
megalostictus, *Phenacogaster* 23
megapterus, *Gymnothorax* 8
meinkeni, *Rasbora* 34
Melamphaes malayanus 78
Melamphaes polylepis 78
melanopterus, *Leptobarbus* 30
melanopus, *Leiogaster* 79
Melanorhinus boekei 73
melanostigma, *Saccoderma* 24
Melanotaenia dumasi 73
Melanotaenia exquisita 73
Melanotaenia gracilis 73
Melanotaenia herbertaxelrodi 74
Melanotaenia maculata 74

- Melanotaenia monticola* 74
Melanotaenia multisquamata 5, 74
Melanotaenia neglecta 74
Melanotaenia ogilbyi 74
Melanotaenia parkinsoni 74
Melanotaenia pimaensis 74
Melanotaenia pygmaea 75
menezesi, *Aspidoras* 39
meraukensis, *Copidoglanis* 42
meraukensis, *Sphoeroides* 3, 110
mertoni, *Eleotris* 97
mertoni, *Gobius* 99
Metaloricaria paucidens 59
metzelaari, *Evermannichthys* 97
micracanthus, *Corydoras* 46
Microglanis secundus 59
Microgobius lacustris 101
microlabra, *Schistura* 36
microlepidotus, *Aseraggodes* 107
microlepis, *Acanthocharax* 13
micromaculatus, *Hypostomus* 55
microps, *Pogoneleotris* 103
microrhynchus, *Aphoristia* 107
microstoma, *Platophrys* 106
minor, *Lepadichthys* 64
modesta, *Helgia* 29
Modigliana papillosa 31
Moenkhausia agnesae 21
Moenkhausia browni 22
Moenkhausia georgiae 22
Moenkhausia hemigrammoides 22
Moenkhausia phaeonota 22
Moenkhausia surinamensis 22
Moenkhausia takasei 22
monticola, *Melanotaenia* 74
moolenburghae, *Pseudeutropius* 61
moolenburghi, *Hemisilurus* 53
morae, *Gasteropelecus sternicla* 18
morawhannae, *Curimatus* 17
Moringua floresiana 9
multimaculatus, *Corydoras* 47
multisquamata, *Melanotaenia* 5, 74
multisquamatus, *Sicyopus* 104
Muraena angusticauda 9
Muraena dinocephala 9
Muraenichthys acutirostris 9
Muraenichthys sibogae 9
muraeniformes, *Acanthophtalmus* 26
mutator, *Astyanax* 14
myersi, *Corydoras* 47
Myxus calancae 91

nalbanti, *Noemacheilus alepidotus* 31
Nangra robusta 59

Nannaethiops geisleri 22
nanningsi, *Labeobarbus* 30
Nannocampus weberi 80
Nannostomus beckfordi surinami 22
Nannostomus bifasciatus 3, 23
Nannostomus marginatus 23
Nannostomus marginatus picturatus 23
nanus, *Corydoras* 47
Narcine brunnea 7
narcissus, *Corydoras* 47
natalensis, *Chromis* 87
navigatoris, *Tydemania* 109
naziri, *Clupisoma* 41
Neenchelys buitendijki 9
neglecta, *Melanotaenia* 74
Nematobrycon lacortei 23
Nematochromis annae 88
Nematops grandisquama 106
Neobythites malayanus 65
neocaledonicus, *Galaxias* 11
Neopercis striolata 93
nesolepis, *Eleotris* 97
nickeriensis, *Hypostomus* 55
nickeriensis, *Loricaria* 57
nierstraszi, *Peristedion* 82
niger, *Blennius* 94
nigerrima, *Enchelyurus* 94
nigricauda, *Pseudopimelodus*
nigromanus, *Pomacentrus* 89
nigroviridis, *Tetraodon* 110
nijsseni, *Apistogramma* 85
nijsseni, *Harttia* 52
nijsseni, *Oxyurichthys* 101
nini, *Puntius* 33
Noemacheilus alepidotus nalbanti 31
Noemacheilus anambarensis 31
Noemacheilus griffithi hazarensis 31
Noemacheilus harnaiensis 31
Noemacheilus horai machensis 31
Noemacheilus kuiperi 31
Noemacheilus pakistanicus 31
Noemacheilus rupecola alepidotus 31
Noemacheilus serwerzowi 32
Nomorhamphus celebensis 69
normalis, *Aphyocypris* 26
notonema, *Gobius* 99
novaeguinea, *Oxyeleotris urophthalmus* 101
novaeguineae, *Copidoglanis* 42
novaeguineae, *Doiichthys* 51
novaeguineae, *Hemiramphus (Zenarchopterus)* 68
novaeguineae, *Pseudomugil* 75
novaeguineaensis, *Periophthalmus cantonensis* 102
nouhuysi, *Atherinichthys* 72
nudidens, *Arius* 38

- obbesi, *Cocotropus* 81
 obbesi, *Porochilus* 61
 obtusifrons, *Therapon* 90
 occidentalis, *Ambassis confinis* 84
 ocellatus, *Apogon* 86
 ocellatus, *Poecilobrycon* 23
 octocirrus, *Corydoras* 47
Odontonema kerberti 93
 oelemariensis, *Corydoras* 48
 ogilbyi, *Melanotaenia* 74
 oiapoquensis, *Corydoras* 48
Oloplotosus mariae 59
 ophthalmicus, *Gobius* 100
 ophthalmolepis, *Lepidoblepharon* 106
Opistognathus versluysi 93
 orcesi, *Corydoras pastazensis* 49
 orientalis, *Hemiramphus* 68
 ornatus, *Corydoras* 48
 ornatus, *Rhadinocentrus* 75
 orphnopterus, *Corydoras* 48
 orthus, *Hemigrammus* 19
 ortmanni, *Heterogramma* 88
Osteochilus brevicauda 32
Osteochilus intermedius 32
 ourastigma, *Corydoras* 48
 ouwensi, *Sicyopterus* 104
Oxybrycon parvulus 23
Oxyeleotris urophthalmus novaeguinea 101
 oxyrhynchus, *Corydoras* 48
Oxyurichthys jaarmani 101
Oxyurichthys laterisquamatus 101
Oxyurichthys nijsseni 101
 oyensi, *Gobius* 100
- pahangensis, *Barbus* 27
 paipayensis, *Hemigrammus* 19
 pakistanicus, *Noemacheilus* 31
 paludicola, *Pseudomugil* 75
 panda, *Corydoras* 49
Pangasius dezwaani 59
 papillosa, *Modigliana* 31
 papillosus, *Lophius* 64
 papuensis, *Plotosus* 60
Parabodianus rutteni 92
Paracentropogon aeglefinus 81
Paracentropogon cynocephalus 82
Paracentropogon pleurostigma 82
Paracrossochilus bicornis 32
Parasalanx annitae 11
Parasturisoma maculata 59
Pardachirus klunzingeri 108
Parioglossus borneensis 101
 parkinsoni, *Melanotaenia* 74
 parnahybae, *Loricaria* 57

- Parophiocephalus unimaculatus* 105
Parotocinclus britskii 60
parri, *Saurida* 13
Parupygus litaniensis 25
Parupygus savannensis 25
parvicarinata, *Farlowella* 52
parvulus, *Oxybrycon* 23
patoti, *Betta* 105
patoti, *Rhombattractus* 77
paucidens, *Metaloricaria* 59
pauciperforata, *Rasbora* 34
peitaihoensis, *Hemirhamphus* 69
pejeraton, *Sternopygus* 26
Pellona kampeni 11
Periophthalmus cantonensis novaeguineensis 102
Periophthalmus dipus angustiformis 102
Periophthalmus vulgaris vulgaris 102
Periophthalmus weberi 102
Peristedion nierstraszi 82
Peristedion undulatum 82
peterseni, *Leptocephalus* 8
Petroscirtes fluctuans 94
Petroscirtes kochi 94
phaeonota, *Moenkhausia* 22
phelpsi, *Astroblepus* 39
Phenacogaster megalostictus 23
philander, *Chromis* 87
Physiculus longifilis 65
picklei, *Cetopsorhamdia* 40
picturatus, *Nannostomus marginatus* 23
pimaensis, *Melanotaenia* 74
pijpersi, *Cetopsorhamdia* 41
pijpersi, *Curimatus esperanzae* 17
Pimelodella geryi 60
Pimelodella macturki 60
Pimelodella megalops 60
Pimelodus albofasciatus 60
Pimelodus clarias coprophagus 60
pinnatus, *Deuterodon* 17
Platophrys microstoma 106
Platycephalus grandisquamis 83
Platycephalus horai 83
Platycephalus macrocephalus 83
platymetopon, *Loricariichthys* 58
Pleurosicya boldinghi 103
pleurostigma, *Paracentropogon* 82
Plotosus papuensis 60
Poecilobrycon ocellatus 23
Poecilocharax bovallii 24
poecilus, *Aspidoras* 39
Pogoneleotris microps 103
polylepis, *Melamphaes* 78
Polynemus longipectoralis 91
polytaenia, *Leucogobio* 30

- Pomacentrus analis xanthus* 88
Pomacentrus fasciatus intermedia 88
Pomacentrus nigromanus 89
Popondetta connieae 75
poptae, *Xenopoecilus* 72
Porochilus obbesi 61
pospisili, *Cochliodon* 41
potaroensis, *Aequidens* 83
praecox, *Rhombatractus* 77
prionotos, *Corydoras* 49
Pristella aubyni 24
Pristipoma boschmae 89
profundus, *Arnoglossus* 106
profundus, *Quisquilius* 103
prolixa, *Loricaria* 58
Promacheon sibogae 12
Prosopodasys zonatus 82
Prototroctes semoni 11
Pseudancistrus pediculatus cobrensis 61
Pseuderythrinus rosapinnis 24
Pseudeutropius moolenburghae 61
Pseudohemiodon apithanos 61
pseudohemius, *Hypostomus* 55
Pseudojulis trifasciatus 92
Pseudomugil gertrudae 75
Pseudomugil inconspicuus 75
Pseudomugil novaeguineae 75
Pseudomugil paludicola 75
Pseudopimelodus albomarginatus 61
Pseudopimelodus nigricauda 61
Pseudopimelodus villosus butcheri 61
Pseudopristella simulata 24
Pseudorasbora altipinna 32
Pseudorasbora depressirostris 32
Pseudorasbora fowleri 33
Pseudorhombus affinis 106
Pseudorhombus argus 106
Pseudorhombus quinquocellatus 107
Pteranthias longimanus 89
pulcher, *Corydoras* 49
pulchra, *Garmanella* 70
punctata, *Tatia* 63
punctatus, *Syngnathus* 81
punjabensis, *Glyptothorax* 52
Puntius nini 33
Puntius sunieri 33
Puntius tawarensis 33
Pygidium emanueli emanueli 62
pygmaea, *Melanotaenia* 75
pygmaeus, *Xiphophorus* 72

quinquocellatus, *Pseudorhombus* 107
Quisquilius macrophthalmus 103
Quisquilius profundus 103

Rachovia hummelincki 70
raimundi, *Corydoras* 49
Raja annandalei 7
Raja sibogae 7
Rasbora cephalotaenia steineri 33
Rasbora dorsiocellata 33
Rasbora heteromorpha 33
Rasbora jacobsoni 33
Rasbora maculata 34
Rasbora meinkenii 34
Rasbora pauciperforata 34
Rasbora reticulatus 34
Rasbora rutteni 34
Rasbora semilineata 34
Rasbora tawarensis 35
Rasbora trifasciata 35
Rasborinus hainanensis 35
rastrosa, *Thryssa* 11
regani, *Symphurus* 109
resticulosa, *Apistogramma* 85
reticularis, *Gobius* 100
reticulata, *Farlowella* 52
reticulatus, *Ambassis interrupta* 84
reticulatus, *Rasbora* 34
retrofasciatus, *Chromis* 87
reynoldsi, *Corydoras* 49
Rhabdamia clupeiiformes 89
Rhabdamia cypselurus 89
Rhadinocentrus ornatus 75
Rhinosardinia serrata 11
Rhombatractus affinis 75
Rhombatractus catherinae 76
Rhombatractus crassispinosus 76
Rhombatractus fasciatus 76
Rhombatractus kochi 76
Rhombatractus lorentzi 77
Rhombatractus patoti 77
Rhombatractus praecox 77
Rhombatractus senckenbergianus 77
Rhombatractus sentaniensis 77
Rhombatractus vanheurni 5, 78
richardi, *Macrurus* 67
riesei, *Axelrodia* 14
Rineloricaria formosa 62
Rineloricaria heteroptera 62
riodourensis, *Blennius* 94
rivuloides, *Gobio* 28
Rivulus agilae 70
Rivulus cryptocallus 71
Rivulus limoncochae 71
Rivulus manaensis 71
Rivulus marmoratus bonairensis 71
robusta, *Nangra* 59
robustus, *Corydoras* 49

- rodwayi, Hemigrammus 19
 Roebooides dayi dientonito 24
 roemeri, Gobius 100
 roemeri, Therapon 90
 roosendaali, Congrellus 8
 rosaceus, Hyphessobrycon 20
 rosae, Joinvillea 21
 rosapinnis, Pseuderythrinus 24
 roseus, Megalamphodus 21
 rouxi, Gobius 100
 rubrostigma, Hyphessobrycon 20
 rugosa, Farlowella 52
 rutteni, Parabodianus 92
 rutteni, Rasbora 34
 Ruvettus tydemani 105
- Saccoderma melanostigma 24
 saizi, Hyphessobrycon 20
 Salarias bleekeri 95
 Salarias crenulatus 95
 salinus, Cyprinodon 69
 Samariscus huysmani 107
 Samariscus sumieri 107
 sanchesii, Corydoras 50
 sanctieustatii, Callionymus 96
 sanctimartini, Gobiesox 63
 sandei, Apogon 86
 saramaccensis, Corydoras 50
 saramaccensis, Hypostomus 55
 sarasini, Sicyopterus 104
 sarasinorum, Haplochilus 70
 Sarcocheilichthys nigripinnis tungting 35
 Saurida brasiliensis 12
 Saurida parri 13
 savannensis, Parupygus 25
 Scaphiodon watsoni 35
 scapulopunctatus, Gobius 100
 Schismatogobius bruynisi 103
 Schistura arifi 35
 Schistura curtistigma 35
 Schistura fascimaculata 36
 Schistura kessleri lepidocaulis 36
 Schistura kohatensis 36
 Schistura macrolepis 36
 Schistura microlabra 36
 Schistura shadiwalensis 36
 Schizodon fasciatum corti 24
 schmidti, Leptocephalus 9
 schoteli, Macrorhamphosus 79
 Scolopsis dubiosus 89
 Scolopsis elongatus 90
 Scorpaena albofasciata 82
 Scorpaena tredecimspinosa 82
 Scorpaenopsis simulata 83

Scyliorhinus sibogae 7
secundus, *Microglanis* 59
semicrenatus, *Alticus* 93
semilineata, *Rasbora* 34
semoni, *Prototroctes* 11
semoni, *Stiphodon* 104
senckenbergianus, *Rhombatractus* 77
senegambiensis, *Gobius* 100
sentaniensis, *Rhombatractus* 77
septentrionalis, *Corydoras* 50
Serranus dewegeri 90
serrata, *Rhinosardinia* 11
sewerzowi, *Noemacheilus* 32
shadiwalensis, *Schistura* 36
siamensis, *Tylognathus* 37
sibogae, *Callechelys* 8
sibogae, *Coryphaenoides* 66
sibogae, *Cynoglossus* 108
sibogae, *Muraenichthys* 9
sibogae, *Promacheon* 12
sibogae, *Raja* 7
sibogae, *Scyliorhinus* 7
sibogae, *Sphenanthias* 90
Sicydium wichmanni 103
Sicyopterus brevis 104
Sicyopterus longifilis 104
Sicyopterus ouwensi 104
Sicyopterus sarasini 104
Sicyopus multisquamatus 104
signifer, *Lepidarchus adonis* 21
simulata, *Pseudopristella* 24
simulata, *Scorpaenopsis* 83
simulatus, *Corydoras* 50
sipaliwini, *Bunocephalus amaurus* 40
Siphamia tubifer 90
sluiteri, *Brannerella* 94
sluiteri, *Fierasfer* 65
smedleyi, *Lissochilus* 30
socolofi, *Gymnocorymbus* 18
Solea vermeuleni 108
Solenostomus armatus 80
Sovichthys abuelo 62
sovichthys, *Chaetostoma anomala* 41
spengeli, *Anguilla* 7
Sphagebranchus gjellerupi 9
Sphagebranchus heyningi 10
Sphagebranchus huysmani 10
Sphagebranchus klazingai 10
Sphagebranchus vulturis 10
Sphenanthias sibogae 90
Sphoeroides meraukensis 3, 110
spiloclistron, *Anostomus* 13
spilotus, *Aspidoras* 39
spilurus, *Corydoras* 50

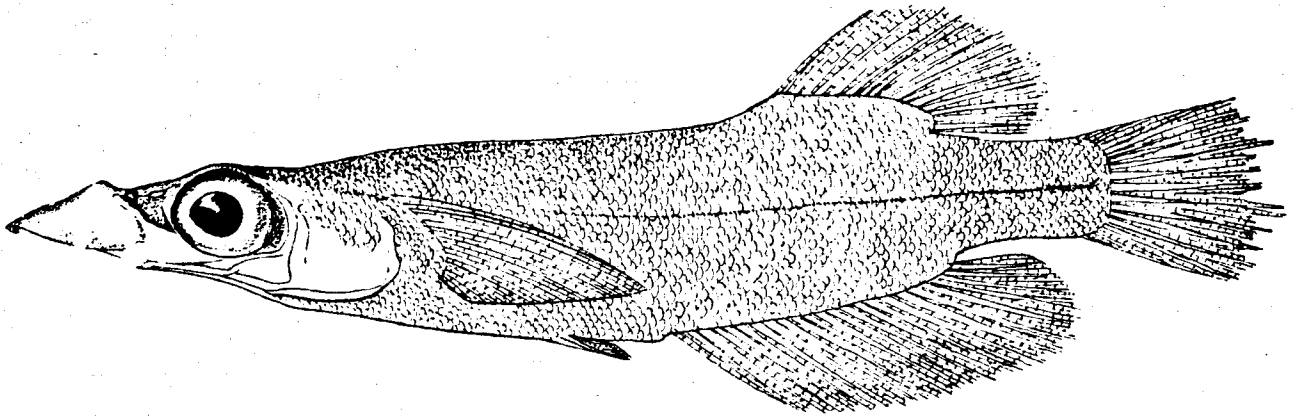
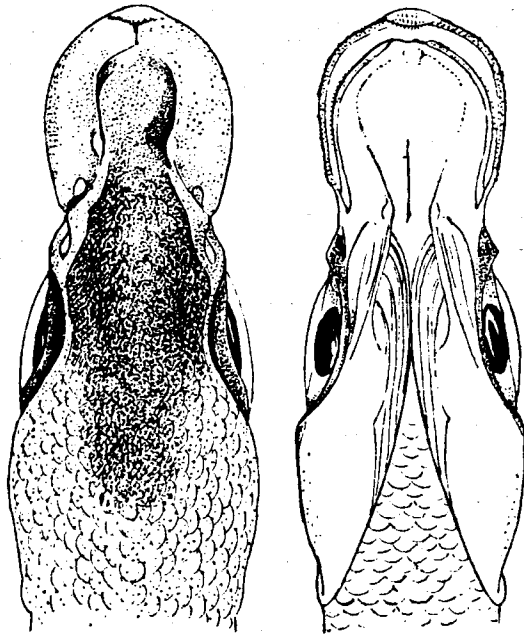
- spinifer, *Engraulicypris* 28
 spinosa, *Acanthemblemaria* 93
 spinosissimus, *Hippocampus* 80
 spixii, *Loricaria* 58
 splendens, *Betta* 105
 stagnalis, *Austrofundulus* 69
 steindachneri, *Corydoras* 51
 steineri, *Rasbora cephalotaenia* 33
 Sternarchogiton cuchillejo 25
 Sternopygus pejeraton 26
 stictus, *Hyphessobrycon* 20
 stigmatophorus, *Gobius* 100
 Stiphodon semoni 104
 stocki, *Glyptothorax* 52
 striolata, *Neopercis* 93
 Stylophthalmus braueri 12
 suborbitalis, *Diaphus* 12
 subulatus, *Cheilodipterus* 87
 sumatranus, *Lissochilus* 30
 sunieri, *Puntius* 33
 sunieri, *Samariscus* 107
 surinamensis, *Carnegiella strigata* 15
 surinamensis, *Corydoras schwartzi* 50
 surinamensis, *Harttia* 53
 surinamensis, *Hemibrycon* 18
 surinamensis, *Hoplosternum thoracatum* 54
 surinamensis, *Hypostomus* 56
 surinamensis, *Moenkhausia* 22
 surinami, *Nannostomus beckfordi* 22
 Symphurus fallax 4, 109
 Symphurus regani 109
 Symphurus vittatus 109
 Synagrops malayanus 90
 Synaptura villosa 109
 Syngnathus corrugatus 3, 80
 Syngnathus crenulatus 80
 Syngnathus dunckeri 81
 Syngnathus punctatus 81
 Syngnathus uncinatus 81
 Synodontis matthesi 62

 Taenioides coecus 104
 takasei, *Moenkhausia* 22
 tapanahoniensis, *Hypostomus gymnorhynchus* 55
 Tatia brunnea 62
 Tatia concolor 63
 Tatia punctata 63
 tauensis, *Chalixodytes* 92
 tawarensis, *Puntius* 33
 tawarensis, *Rasbora* 35
 Telmatherina abendanoni 78
 Telmatherina bonti 78
 tenuis, *Hyphessobrycon* 20
 Tetranesodon conorhynchus 63

- Tetraodon nigroviridis* 110
Tetrodon eulepidotus 110
texturatus, *Aseraggodes* 108
Thayeria ifati 24
theodora, *Clarias* 41
Therapon habbema 90
Therapon obtusifrons 90
Therapon roemeri 90
Thynnichthys vaillanti 36
Thryssa brevicauda 11
Thryssa rastrosa 11
timorensis, *Haplochilus* 70
Tor zhobensis 37
Torpedo mackayana 7
Toxotes lorentzi 91
Trachycorystes jokeanna 63
Trachymochlus cupido 63
tredecimspinosus, *Scorpaena* 82
treitlii, *Corydoras* 51
triangularis, *Gobius* 101
triangulus, *Alticus* 93
trifasciata, *Rasbora* 35
trifasciatus, *Apogon* 86
trifasciatus, *Pseudojulis* 92
Tripterygion callionymi 95
Tripterygion fasciatum 95
Tripterygion gymnauchen 95
triseriatus, *Corydoras nattereri* 47
trivirgatus, *Anisochaetodon* 84
tubifer, *Siphamia* 90
tubulatus, *Apogon* 86
tumbensis, *Alestopetersius xenurus* 13
tungting, *Sarcocheilichthys nigripinnis* 35
tydemani, *Macrurus* 67
tydemani, *Ruvettus* 105
Tydemia navigatoris 109
Tylobronchus maculosus 25
Tylognathus siamensis 37
Tyttobrycon dorsimaculatus 25
Tyttobrycon xerui 25
- Umbrina gracilicirrus* 91
uncinatus, *Syngnathus* 81
undulatum, *Peristedion* 82
unimaculatus, *Parophiocephalus* 105
uronema, *Gobius* 101
- Vaillantella maassi* 37
vaillanti, *Thynnichthys* 36
vallachica, *Cobitis aurata* 27
vanderhorsti, *Apodocreedia* 92
vanheurni, *Rhombatractus* 5, 78
veliger, *Histioclinus* 94
velutinus, *Hemipimelodus* 53

- venezuelae, *Cyrtocharax magdalenae* 17
 venezuelae, *Gephyrocharax* 18
 venezuelae, *Loricaria variegata* 58
 venezuelensis, *Farlowella acus* 51
 ventromaculatus, *Hypostomus* 56
 venulosus, *Clupeoides* 10
 vermeuleni, *Solea* 108
 vermicularis, *Acanthopthalmus* 26
 versluysi, *Opistognathus* 93
 verweyi, *Callyodon* 91
 villosa, *Synaptura* 109
 villosus, *Gobius* 101
 vilmae, *Hyphessobrycon* 21
 vintoni, *Characidium* 16
 virgulatus, *Aspidoras* 39
 vittata, *Halleutaea stellata* 65
 vittatus, *Corydoras blochi* 43
 vittatus, *Gobiesox* 64
 vittatus, *Symphurus* 109
 viviparus, *Barbus* 27
 voladorita, *Characidium* 16
 vorderwinkleri, *Hemigrammus* 19
 vulgaris vulgaris, *Periophthalmus* 102
 vulturus, *Sphagebranchus* 10
- wanamensis, *Glossolepis* 73
 watsoni, *Scaphiodon* 35
 weberi, *Hepatus* 105
 weberi, *Homaloptera* 29
 weberi, *Periophthalmus* 102
 weberi, *Nannocampus* 80
 weberi, *Xenogobius* 104
 weitzmani, *Corydoras* 51
 wichmanni, *Apogon* 86
 wichmanni, *Sicydium* 103
 wotroi, *Corydoras* 51
- xanthus, *Pomacentrus analis* 88
Xenogobius weberi 104
Xenopoecilus poptae 72
 xerui, *Tyttobrycon* 25
 xinguensis, *Corydoras* 51
Xiphophorus pygmaeus 72
- zebra, *Characidium* 16
Zenarchopterus beauforti 69
 zhobensis, *Tor* 37
 zonatus, *Bostrychus* 96
 zonatus, *Prosopodasys* 82

Dr H. Nijssen, L. van Tuijl & Dr I. J. H. Isbrücker
Department of Ichthyology,
Institute of Taxonomic Zoology,
University of Amsterdam,
Plantage Middenlaan 53, 1018 DC Amsterdam;
Postbus 20125, 1000 HC Amsterdam,
The Netherlands.



Adrianichthys kruyti

Weber, 1913

Available on request at the Library of the Institute of
Taxonomic Zoology (Zoological Museum), University of Amsterdam,
Postbus 20125, 1000 HC Amsterdam, The Netherlands.