

BULLETIN ZOOLOGISCH MUSEUM



Vol. 1 No. 13 19-XII-1969

CATALOGUE OF THE TYPE SPECIMENS OF TUNICATA IN THE ZOOLOGICAL MUSEUM IN AMSTERDAM

S. VAN DER SPOEL

ABSTRACT

The types of 360 nominal species of Tunicata present in the Zoological Museum in Amsterdam are listed, for some species lectotypes are indicated.

The collection of Tunicata, in the Zoological Museum at Amsterdam, containing types of 360 nominal species, was brought together for the major part by the late Professor Dr. C.Ph. Sluiter (1854 - 1933). From 1878 until 1891 Professor Sluiter worked in the East Indies and published during these years on Tunicata and other Evertebrata of this area. From 1891 until 1925 he was associated with the University of Amsterdam, first as extraordinary professor later as ordinary professor. In this period he studied the Tunicata collected by: the Siboga Expedition, the Gier Expedition, the Expedition with the Yacht Chazalie, the French Antarctic Expedition, Professor Dr. M. Weber and by Professor Dr. H. Schauinsland during his cruise in the Pacific and material from some smaller collections. With contemporary workers like Drs. R. Hartmeyer, W.A. Herdman, W. Michaelsen, W.E. Ritter and M.P.A. Traustedt he was in close contact and with them he exchanged type material of Tunicata.

There has never been a special curator for the collection of Tunicata in the Zoölogisch Museum in Amsterdam. Hence, after some transfers of the collections, a revision of the material was desirable. The list of type specimens published here is the result of this revision. A study of literature and the card-index make it feasible that type specimens of some nominal species should be in the collection though no trace of them could be found. In table I the species are enumerated of which no types are present.

In several cases the types are incomplete which may be due to the fact that the author dissected specimens or colonies. Some type specimens may have been sent to other institutions but I did not succeed in tracing the history of these types.

The types of some species have not been depicted together with the original description. Though photographs of the types are not the best way of illustration, it seems useful to insert them here, in

order to give an addition to the original description and to fix the identity of the types more accurately.

According to previous usage the major part of the types was labeled "TYPE" without an indication of holo- and paratypes. These series are here indicated as syntypes; lectotypes have been selected when it was beyond doubt that the selected specimen was the figured one, or the one on which the most important part of the description was based. Sometimes the nominal species was represented in the collection by types of which only one specimen or colony was dissected, allowing the selection of the dissected one as the lectotype. When on the label of the type series another name than the published one was given by the author, this manuscript name is added in the list.

The nominal species are arranged alphabetically according to their original generic names. When the name is put into synonymy of another species, the most recent name is added with a reference to the literature consulted. In table IV those generic names are given alphabetically, which are mentioned as synonyms or manuscript names from labels in table III. It is not claimed that all nomenclatorial changes have been traced.

The localities of the stations of the Siboga Expedition are only given once, when a station is referred to more than once, one has to consult the first reference to that station.

The author is very much indebted to Dr. C. Monnot (Muséum National d'Histoire Naturelle, Paris), to Dr. J. Knudsen (Universitetets Zoologiske Museum, Copenhagen), to Dr. M. E. Downey (Smithsonian Institution, Washington), to Miss Dr. E. C. Pope (Australian Museum, Sidney), to Dr. R. H. Millar (Millport, Marine Station, Isle of Cumbrae) and to Dr. D. Kühlmann (Museum für Naturkunde Humboldt Universität, Berlin) for their indispensable help.

Table I

Species of which the types are not present in the collections of the Zoological Museum

Ascidia melanostoma Sluiter, 1885
Ascidia rhabdophora Sluiter, 1904
Ascidia translucida Sluiter, 1890
Distoma rhodopyge Sluiter, 1898
Molgula inversa Sluiter, 1900¹⁾
Psammaplidium ambiguum Sluiter, 1900¹⁾
Psammaplidium stelliferum Sluiter, 1900¹⁾
Sigillina caerulea Sluiter, 1909¹⁾
Styela argillaca Sluiter, 1900¹⁾

¹⁾ From these species type material was in all probability never deposited in the collection of the Zoological Museum in Amsterdam.

Table II

Abbreviations used

BMNH - British Museum (Natural History), London
MNHN - Muséum National d'Histoire Naturelle, Paris
MNB - Museum für Naturkunde an der Humboldt - Universität, Berlin
USNM - United States National Museum, Washington
ZMUC - Universitetets Zoologiske Museum, Copenhagen
ZMA - Zoölogisch Museum, Amsterdam
AMS - Australian Museum, Sydney
Col. - colony
Coll. - collected by
fragm. - fragments
loc. - locality
u.s. - means that the holotype is the unique specimen, or colony, at the disposal of the author of the species concerned and used by this author for the original description.

Table III
List of type material

- 1 *Abyssascidia pediculata* Sluiter, 1904: 27, pl. IV figs. 13 - 17.
Holotype : ZMA TU 171. Siboga Exped. Stat. 253, 5°48'.2S 132°13' E, depth 304 m, Dec. 10, 1899 (holotype u.s.).
- 2 *Alloeocarpa rudentiformis* Sluiter, 1915: 40, figs. 5 - 7 and 21.
Lectotype : ZMA TU 177. Rio d'Oro, N.W. Africa, Coll. F.P. Vermeulen (this is the dissected and figured col.).
Paralectotype : ZMA TU 1282. Same loc. (1 small col.).
- 3 *Amaroucium altarium* Sluiter, 1909: 105, pl. V fig. 9.
= *Aplidium altarium* vide: Millar, 1963: 695.
Holotype : ZMA TU 176. Siboga Exped. Stat. 234, Nalahia Bay, Nusa Laut Isl., depth 46 m, Nov. 19/20, 1899 (holotype u.s.).
- 4 *Amaroucium astracoides* Sluiter, 1898b: 33, pl. 1 fig. 9, pl. 5 figs. 2 - 5.
= *Aplidium flavo-lineatum* (Sluiter, 1898) vide: Millar, 1962: 120.
Syntypes : ZMA TU 178. Seapoint near Cape Town, 1894, Coll. M. Weber (there are 7 larger and many smaller fragments of the original 3 col. in the sample).
- 5 *Amaroucium coei* Ritter, 1901: 251, pl. XXIX figs. 31 - 32.
Paratype : ZMA TU 180. St. Paul Harbor Kodiak, July 3, 1899, Harriman Alaska Exped. (1 col.).
- 6 *Amaroucium constellatum* Verrill, 1871: 359.
Syntype : ZMA TU 181. Nantucket, Mass., Coll. A.E. Verrill (1 col.). Another syntype is in USNM, reg. no. 4643.
- 7 *Amaroucium constrictum* Sluiter, 1900a: 16, pl. 1 fig. 8a.
Syntypes : ZMA TU 182. Maunganui - Chatham Is., 1896 - 1897, Coll. Dr. H. Schauinsland (3 col. figured).
ZMA TU 183. Same loc. (1 of the col. is figured but this one may be *Leptoclinium asperum* Gottsch. as indicated in the legend to pl. 1 fig. 8b; it was, however, labeled *A. constrictum*).
- 8 *Amaroucium crateriferum* Sluiter, 1909: 103, pl. V fig. 7, pl. VIII fig. 11.
= *Aplidium crateriferum* vide: Millar, 1963: 692.
Lectotype : ZMA TU 1278. Siboga Exped. Stat. 104, Sulu harbor, Sulu Isl., July 2/3, 1899 (the figured col.).
Paralectotype : ZMA TU 179. Same loc. (1 col.).
- 9 *Amaroucium flavo-lineatum* Sluiter, 1898b: 30, pl. 1 fig. 7, pl. 4 fig. 12.
= *Aplidium flavo-lineatum* vide: Millar, 1962: 120.
Syntypes : ZMA TU 184. Plettenburg Bay, S. coast of the Cape Colony, 1894, Coll. M. Weber (of the 3 dissected col. not one agrees with the figure).
- 10 *Amaroucium lubricum* Sluiter, 1898b: 31, pl. 1 fig. 8, pl. 5 fig. 1.
= *Aplidium lubricum* vide: Kott, 1963: 95.
Lectotype : ZMA TU 185. Durban, 1894, Coll. M. Weber (the dissected col. together with a col. on the same substratum fragment).
Paralectotypes: ZMA TU 1293. Same loc. (6 fragm. and col.).
- 11 *Amaroucium obesum* Sluiter, 1900a: 17, pl. 1 fig. 9.

- Holotype : ZMA TU 190. Waitangi, Chatham Is., 1896 - 1897, Coll. Dr. H. Schauinsland (in all probability the other described col. have been lost, the remaining one is holotype u.s.).
- 12 *Amaroucium profundum* Sluiter, 1909: 104, pl. V fig. 8.
Syntypes : ZMA TU 191. Siboga Exped. Stat. 312, 8° 19' S 117° 41' E, depth 274 m, Febr. 14, 1900 (2 col.).
- 13 *Amaroucium ritteri* Sluiter, 1895: p 170, pl. VII figs. 6 - 8.
= *Aplidium ritteri* vide: Kott, 1963: 93.
Holotype : ZMA TU 189. Thursday Isl. in the Torres Strait, Coll. R. Semon (holotype u.s.).
- 14 *Amaroucium simplex* Sluiter, 1898b: 35, pl. 1 fig. 10, pl. 5 fig. 6.
= *Aplidium flavo-lineatum* (Sluiter, 1898) vide: Millar, 1962: 120.
Holotype : ZMA TU 195. Seapoint near Cape Town, 1894, Coll. M. Weber (holotype u.s.).
- 15 *Amaroucium translucidum* Ritter, 1901: 249, pl. XXX figs. 29 - 30.
Paratype : ZMA TU 196. Prince William Sound, Alaska, Harriman Alaska Exped., June 26, 1899 (1 col.).
- 16 *Aplidium depressum* Sluiter, 1909: 102, pl. V fig. 6.
Holotype : ZMA TU 201. Siboga Exped. Stat. 38, 7° 35'.4 S 117° 28'.6 E, depth 521 m, April 1, 1899 (holotype u.s.).
- 17 *Aplidium mauritaniae* Sluiter, 1915: 50, fig. 15.
Holotype : ZMA TU 202. Baie de l'Ouest, N.W. Africa (= Spanish Sahara), Coll. F. P. Vermeulen (holotype u.s.).
- 18 *Aplidium multiplicatum* Sluiter, 1909: 101, pl. V fig. 5.
= *Amaroucium multiplicatum* vide: Tokioka, 1967: 35.
Lectotype : ZMA TU 205. Siboga Exep. Stat. 258, Tual-anchorage, Kei Is., depth 22 m, Dec. 12/16, 1899 (the sections made from this col. prove that Sluiter studied this specimen most intensively).
Paralectotypes: ZMA TU 203. Siboga Exped. Stat. 303, Haingsisi, Samau Isl., depth up to 36 m, Febr. 2/5, 1900 (2 col.).
- 19 *Ascidia aperta* Sluiter, 1904: 38, pl. II fig. 4, pl. VI figs. 1 - 5.
Syntypes : ZMA TU 206. Siboga Exped. Stat. 260, 2.3 miles N 63° W from the North point of Nuhu Jaan Kei Is., depth 27 m, Dec. 16/18, 1899 (1 specimen dissected not the figured one).
ZMA TU 211. Siboga Exped. Stat. 312 (l.c.) (a col. of about 20 specimens on Bryozoa).
- 20 *Ascidia archaia* Sluiter, 1890: 346, figs. 21 - 23.
Holotype : ZMA TU 212. Bay of Batavia (= Bay of Djakarta, Indonesia), coral reef "Vader Smit", Coll. C.Ph. Sluiter (journal no. 673) (holotype u.s.).
- 21 *Ascidia austera* Sluiter, 1904: 39, pl. VI figs. 6 - 8.
Holotype : ZMA TU 267.2. Siboga Exped. Stat. 144, Anchorage north of Salomakiëe (Damar) Isl., depth 45 m, August 7/9, 1899 (holotype u.s.).
- 22 *Ascidia bifissa* Sluiter, 1895: 176, pl. IX figs. 1 - 3.
Holotype : ZMA TU 217. Ambon, Coll. R. Semon (holotype u.s.).

- 23 *Ascidia bisulcata* Sluiter, 1904: 43, pl. VI figs. 14 - 16.
Holotype : ZMA TU 267.3. Siboga Exped. Stat. 250, Anchorage off Kilsuin, W. coast of Kur Isl., depth 20 - 45 m, Dec. 6/7, 1899 (holotype u.s.).
- 24 *Ascidia capillata* Sluiter, 1887: 255, pl. I fig. 4.
Holotype : ZMA TU 219. Bay of Batavia (= Bay of Djakarta, Indonesia), on coral, Coll. C.Ph. Sluiter (holotype u.s.).
- 25 *Ascidia charcoti* Sluiter, 1905b: 471.
= *Ascidia challengerii* Herdman, 1882 vide: Van Name, 1945: 192.
Paratype : ZMA TU 220. Booth Wandel Isl., Antarctica, Exped. Dr. J. Charcot 1905 (1 specimen).
The other types are, as syntypes, in MNHN.
- 26 *Ascidia compta* Sluiter, 1898b: 43, pl. 5 figs. 19 - 21, pl. 6 fig. 1.
Lectotype : ZMA TU 1294. Knysna, S. Africa, 1894, Coll. M. Weber (the dissected specimen).
Paralectotype : ZMA TU 221. Same loc. (1 specimen).
- 27 *Ascidia decemplex* Sluiter, 1890: 343, figs. 16 - 17.
Holotype : ZMA TU 223. Thousand Is. (Indonesia), depth 5 fathoms, Coll. C.Ph. Sluiter (journal no. 671) (holotype u.s.).
- 28 *Ascidia diplozoon* Sluiter, 1887: 249, pl. I fig. 1.
Holotype : ZMA TU 224. Bay of Batavia (= Bay of Djakarta, Indonesia), Coll. C.Ph. Sluiter (holotype u.s.).
- 29 *Ascidia empheres* Sluiter, 1895: 177, pl. IX figs. 4 - 6.
Holotype : ZMA TU 227. Ambon, Coll. R. Semon, (holotype u.s.).
- 30 *Ascidia gemmata* Sluiter, 1895: 177, pl. IX figs. 7 - 9.
Syntypes : ZMA TU 235. Ambon, Coll. R. Semon, (2 specimens, the largest is dissected).
- 31 *Ascidia granosa* Sluiter, 1904: 36, pl. V figs. 11 - 14.
Holotype : ZMA TU 267.8. Siboga Exped. Stat. 310, 8° 30' S 119° 7'.5 E, depth 73 m, Febr. 12, 1900 (holotype u.s.).
- 32 *Ascidia kreagra* Sluiter, 1895: 178, pl. IX figs. 10 - 11.
Holotype : ZMA TU 238. Ambon, Coll. R. Semon (holotype u.s.).
- 33 *Ascidia kuneides* Sluiter, 1887: 259, pl. I fig. 8.
Holotype : ZMA TU 239. Bay of Batavia (= Bay of Djakarta, Indonesia), on coral reef "Vader Smit", near harbour of Batavia, Coll. C.Ph. Sluiter (holotype u.s.).
- 34 *Ascidia lapidosa* Sluiter, 1904: 32, pl. V figs. 1 - 5.
Syntypes : ZMA TU 240. Siboga Exped. Stat. 174, Waru Bay, N. coast of Ceram, depth 18 m, Aug. 28/29, 1899 (1 specimen).
ZMA TU 241. Siboga Exped. Stat. 240, Banda-anchorage, depth 9 - 45 m, Nov. 22, 1899 (4 specimens).
ZMA TU 242. Siboga Exped. Stat. 282, 8°25'.2 S 127° 18'.4 E, depth 27 - 54 m, Jan. 15/17, 1900 (fragments of dissected specimen).
ZMA TU 243. Siboga Exped. Stat. 144, (l.c.) (1 specimen and fragments).

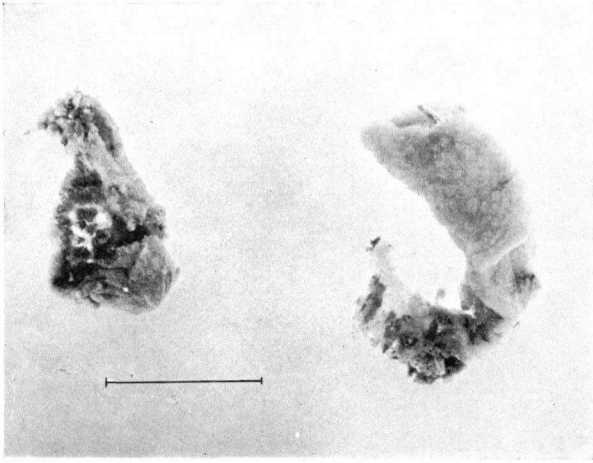
- 35 *Ascidia liberata* Sluiter, 1887: 251, pl. I fig. 2.
Holotype : ZMA TU 244. Bay of Batavia (= Bay of Djakarta, Indonesia), depth 6 - 10 fathoms, Coll. C.Ph. Sluiter (holotype u.s.).
- 36 *Ascidia limosa* Sluiter, 1887: 257, pl. I fig. 7.
Lectotype : ZMA TU 245. Bay of Batavia (= Bay of Djakarta, Indonesia), depth 8 - 10 fathoms, Coll. C.Ph. Sluiter (two specimens were described but probably one was dissected and not preserved).
- 37 *Ascidia limpida* Sluiter, 1904: 44, pl. II fig. 2, pl. VI figs. 17 - 18.
Holotype : ZMA TU 246. Siboga Exped. Stat. 254, 5° 40' S 132° 26' E, depth 310 m, Dec. 10, 1899 (holotype u.s.).
- 38 *Ascidia melanostoma* Sluiter, 1885: 172, pl. I fig. 3, pl. III figs. 1 - 5.
This sample of 6 syntypes has been lost.
- 39 *Ascidia mikreuterica* Sluiter, 1904: 37, pl. V, figs. 15, 16.
Syntypes : ZMA TU 254. Siboga Exped. Stat. 251, 5° 28'.4 S 132° 0'.2 E, depth 204 m, Dec. 8, 1899 (4 specimens).
- 40 *Ascidia nodosa* Sluiter, 1887: 253, pl. 1 fig. 3.
Holotype : ZMA TU 255. Bay of Batavia (= Bay of Djakarta, Indonesia), Coll. C.Ph. Sluiter (holotype u.s.).
This specimen was labeled in the collections with the manuscript name *Ascidia munda* Sluiter.
- 41 *Ascidia perfluxa* Sluiter, 1904: 40, pl. VI figs. 9 - 11.
Lectotype : ZMA TU 1248. Siboga Exped. Stat. 312 (l.c.) (this, the largest specimen, is selected as it is the only fully developed one and the figured animal is too much damaged to be of value as lectotype).
Paralectotypes: ZMA TU 257. Same loc. (3 specimens of which 1 dissected).
- 42 *Ascidia rhabdophora* Sluiter, 1904: 45, pl. VI figs. 19 - 23.
= *Ascidia corelloides* (Van Name, 1924) vide: Van Name, 1945: 187.
The specimen is lost.
- 43 *Ascidia sabulosa* Sluiter, 1898b: 45, pl. 6 figs. 2 - 5.
= *Ascidia canaliculata* Heller, 1878 vide: Michaelsen, 1918: 59.
Holotype : ZMA TU 261. Durban, S. Africa, 1894, Coll. M. Weber (holotype u.s.).
- 44 *Ascidia spinosa* Sluiter, 1904: 34, pl. II fig. 5, pl. V figs. 6 - 10.
Lectotype : ZMA TU 262. Siboga Exped. Stat. 310 (l.c.) (this is the figured and dissected specimen with a special label indicating "type").
Paralectotype : ZMA TU 1245. Same loc. (1 specimen).
- 45 *Ascidia translucida* Sluiter, 1890: 344, figs. 18 - 20.
This sample which in all probability should be present never seems to have been deposited in the collections.
- 46 *Ascidia tricuspis* Sluiter, 1904: 42, pl. VI figs. 12 - 13.
Syntypes : ZMA TU 267.13. Siboga Exped. Stat. 262, 5° 53'.8 S 132° 48'.8 E, depth 560 m, Dec. 18, 1899 (Only fragments of one or more specimens are preserved).

- 47 *Atopogaster tropicum* Sluiter, 1909: 107, pl. V fig. 10, pl. VII fig. 5.
Holotype : ZMA TU 291. Siboga Exped. Stat. 106, Anchorage off Kapul Isl., Sulu Archipelago, depth 13 m, July 4, 1899 (holotype u.s.).
- 48 *Bostrichobranchnus molguloides* Metcalf, 1900: 583, pl. 36 figs. 36 - 37.
= *Bostrichobranchnus pilularis* (Verrill, 1871) vide: Van Name, 1945: 438.
Paratype : ZMA TU 295. Buzzard's Bay, Mass., U.S.A., muddy bottom, Coll. Edwards (1 specimen).
- 49 *Botrylloides chazaliei* Sluiter, 1898a: 10 (See pl. I fig. 1 in this article).
= *Botrylloides nigrum* Herdman, 1886 vide: Van Name, 1945: 227.
Syntypes : ZMA TU 142. Isle of Marguerita, West Indies, 1896, Coll. J. Versluijs, Exped. Yacht Chazalie (two nearly identical col.).
- 50 *Botrylloides gregalis* Sluiter, 1898b: 46, pl. 2 fig. 6. pl. 6 figs. 6 - 9.
Holotype : ZMA TU 296. Coast of Mozambique, 1894. Coll. M. Weber (holotype u.s.).
- 51 *Botrylloides maeandrium* Sluiter, 1898b: 48, pl. 2 fig. 7, pl. 6 fig. 10.
Holotype : ZMA TU 297. Seapoint near Cape Town, 1894, Coll. M. Weber (holotype u.s.).
- 52 *Botryllus separatus* Sluiter, 1904: 100, pl. XV fig. 22.
Syntypes : ZMA TU 318.1. Siboga Exped. Stat. 43, Anchorage off Pulu Sarassa, Postillon Is., depth 36 m, April 4/5, 1899 (many col. on 6 fragments of substratum).
ZMA TU 318.2. Siboga Exped. Stat. 80, 2° 25' S 117° 43' E, depth 50 - 40 m, June 13, 1899 (many col. on one substratum).
ZMA TU 318.3. Siboga Exped. Stat. 91, Moeras (=Muras) reef, inner side, E. coast of Borneo, depth up to 45 m, June 22, 1899 (many col. on one substratum).
- 53 *Chelyosoma sibogae* Sluiter, 1904: 18, pl. I fig. 3, pl. IV figs. 11 - 12.
Syntypes : ZMA TU 328. Siboga Exped. Stat. 105, 6° 8' N 121° 19' E, depth 275 m, July 4, 1899 (four nearly identical specimens).
- 54 *Chorizocormus sidneyensis* Herdman, 1899: 95, pl. Pst. I, figs. 1 - 7.
= *Chorizocarpa sidneyensis* vide: Herdman, 1899: 636.
Topotype : ZMA TU 325. Port Jackson (Australia) (1 col.).
- 55 *Ciona abdominalis* Sluiter, 1898a: 8, pl. I figs. 3 - 8.
= *Rhopalaea abdominalis* vide: Van Name, 1945: 157.
Holotype : ZMA TU 331. Tortugas Isl., West Indies, depth 45 m, 1896, Coll. J. Versluijs, Exped. Yacht Chazalie (holotype u.s.).
- 56 *Cione indica* Sluiter, 1904: 24, pl. IV figs. 1 - 3.
Syntypes : ZMA TU 332. Siboga Exped. Stat. 49a, 8° 23'.5 S 119° 4'.6 E, depth 69 m, April 4, 1899 (one of the two specimens of this sample is in all probability the figured one but both are dissected so that it is not certain which of the two is figured).
ZMA TU 333. Siboga Exped. Stat. 312. (l.c.) (1 specimen).
- 57 *Colella moebiusi* Hartmeyer, 1905: 396, pl. 13 figs. 2 - 3.
= ? *Eudistoma mobiusi* vide: Millar, 1962: 162.
(the correct spelling should be *E. moebiusi*)
Paratype : ZMA TU 800. Mauritius, Coll. K. Möbius (1 col.) (labeled by Sluiter as *Polycitor möbiusi*).

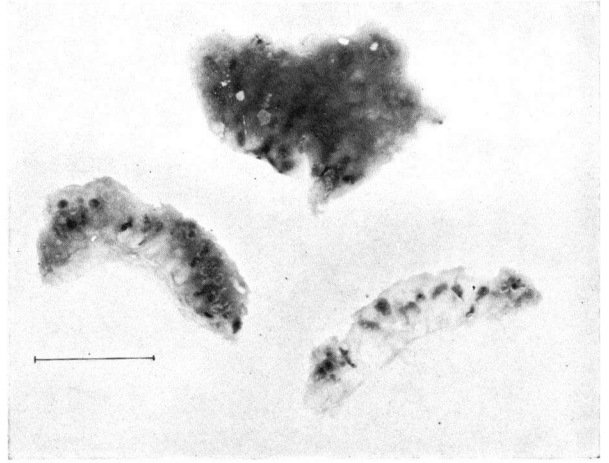
Explanations to the figures (all scales in cm)

- Pl. I fig. 1 *Botrylloides chazaliei* Sluiter, 1898; syntype ZMA TU 142
fig. 2 *Cystodites rufus* Sluiter, 1909; syntype ZMA TU 408
fig. 3 *Cystodites semicataphractus* Sluiter, 1909; holotype ZMA TU 409
fig. 4 *Didemnum chartaceum* Sluiter, 1909; syntype ZMA TU 437
fig. 5 *Didemnum cuspidatum* Sluiter, 1909; syntype ZMA TU 440.1
fig. 6 *Didemnum dealbatum* Sluiter, 1909; syntype ZMA TU 441.1
- Pl. II fig. 1 *Didemnum fragilis* Sluiter, 1909; lectotype ZMA TU 446.3
fig. 2 *Didemnum fucates* Sluiter, 1909; syntype ZMA TU 448
fig. 3 *Didemnum jedanensis* Sluiter, 1909; syntype ZMA TU 454.2
fig. 4 *Didemnum makropnous* Sluiter, 1909; syntype ZMA TU 461.4
fig. 5 *Didemnum membranaceum* Sluiter, 1909; syntype ZMA TU 471.1
fig. 6 *Didemnum ramosum* Sluiter, 1909; lectotype ZMA TU 476.3
- Pl. III fig. 1 *Didemnum reticulatum* Sluiter, 1909; syntype ZMA TU 475.1
fig. 2 *Didemnum timorensis* Sluiter, 1909; lectotype ZMA TU 1274
fig. 3 *Leptoclinum papyraceum* Sluiter, 1909; syntype ZMA TU 583.2
fig. 4 *Leptoclinum perspicum* Sluiter, 1909; syntype ZMA TU 586
fig. 5 *Leptoclinum scidula* Sluiter, 1900; syntype ZMA TU 478
fig. 6 *Leptoclinum varium* Sluiter, 1909; syntype ZMA TU 597
- Pl. IV fig. 1 *Podoclavella molluccensis* Sluiter, 1904; syntype ZMA TU 763.3
fig. 2 *Polysyncraton nigropunctatum* Sluiter, 1909; syntype ZMA TU 838
fig. 3 *Psammaplidium foliaceum* Sluiter, 1900; holotype ZMA TU 844
fig. 4 *Psammaplidium funginum* Sluiter, 1898; syntype ZMA TU 843
fig. 5 *Synstyela michaelsoni* Sluiter, 1900; holotype ZMA TU 1081

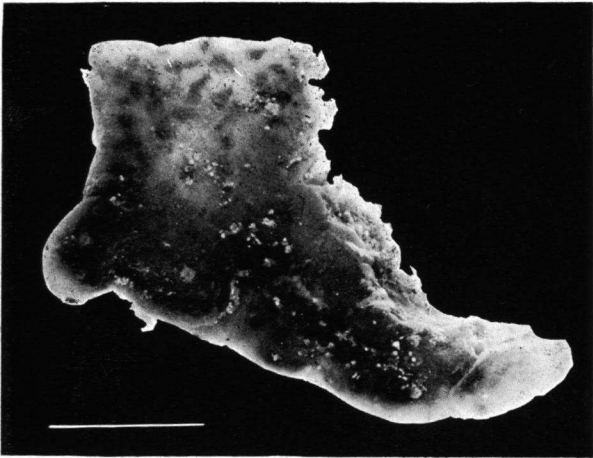
PLATE I



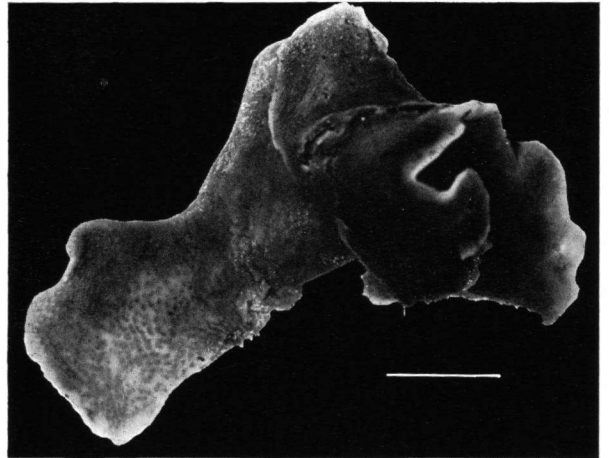
1



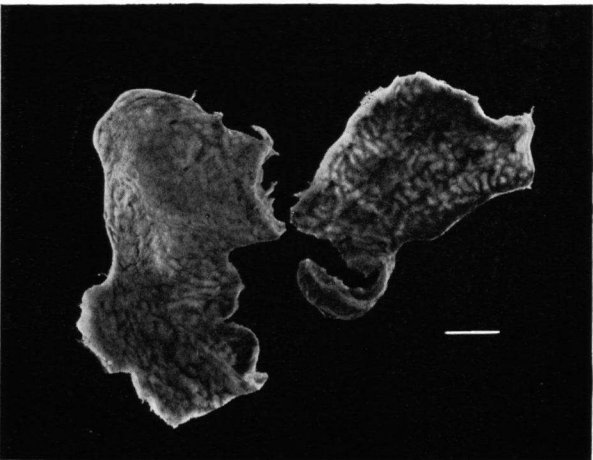
2



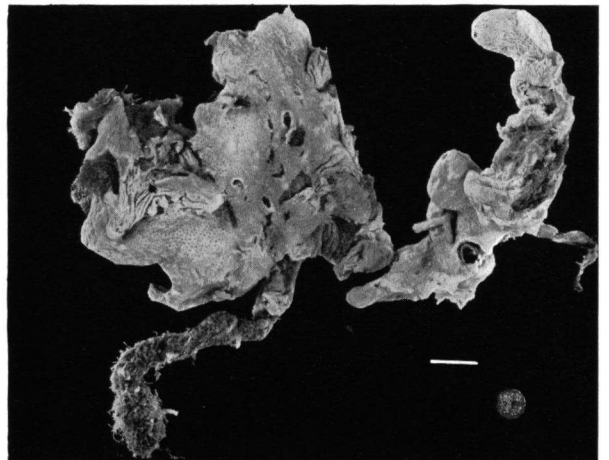
3



4

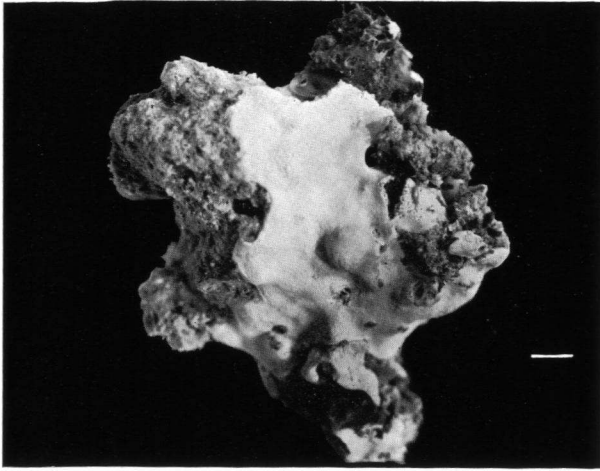


5

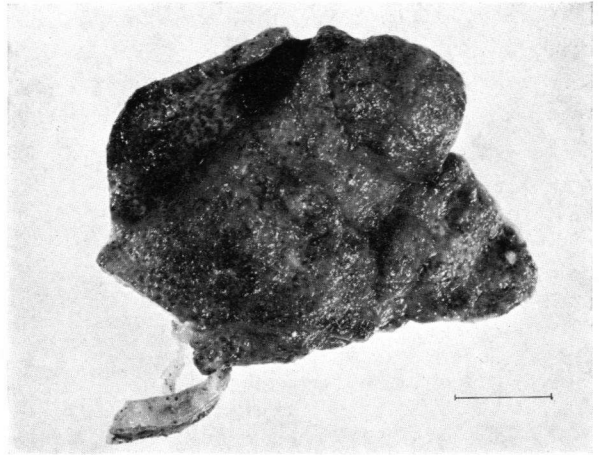


6

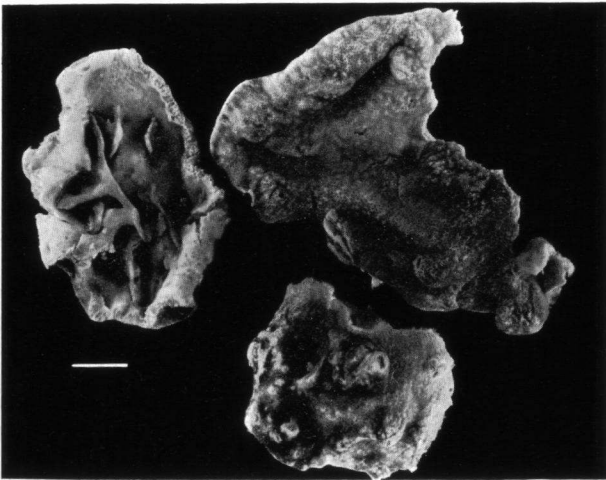
PLATE II



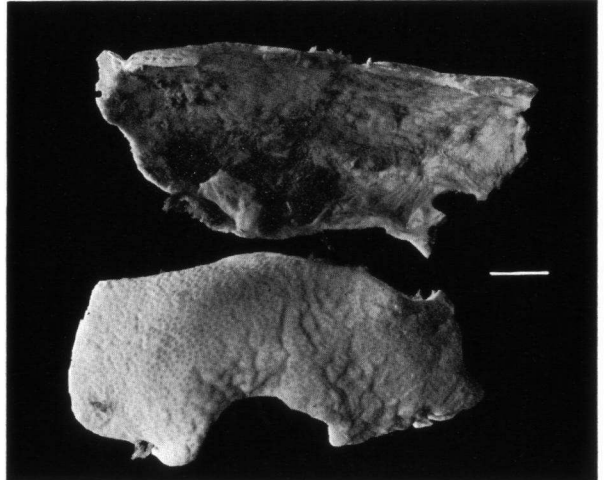
1



2



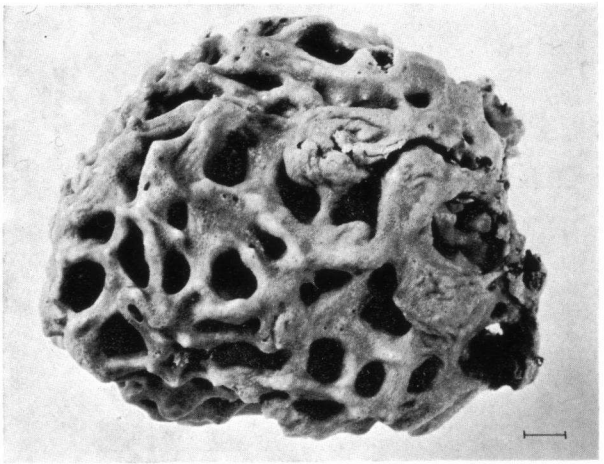
3



4

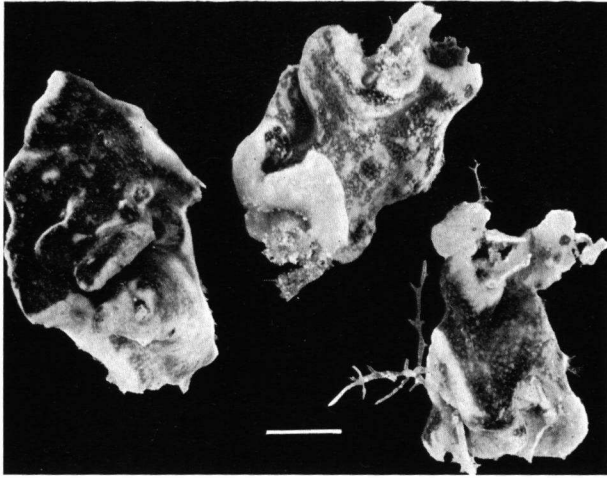


5

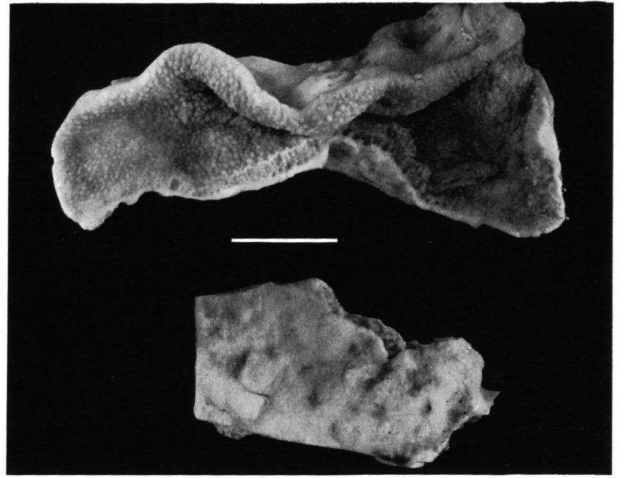


6

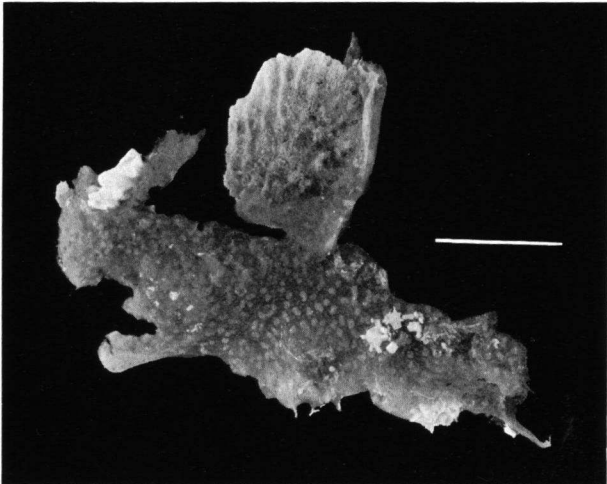
PLATE III



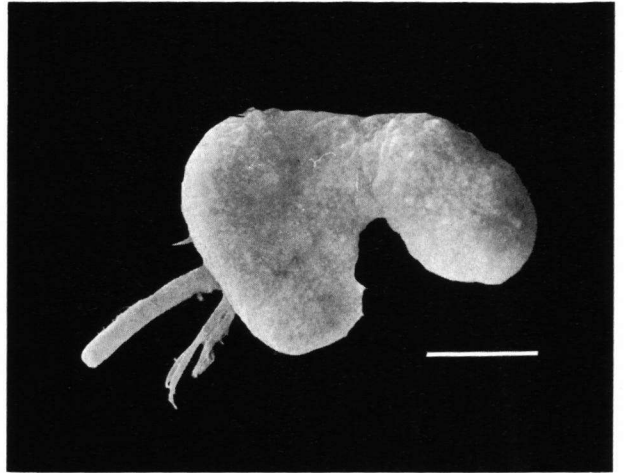
1



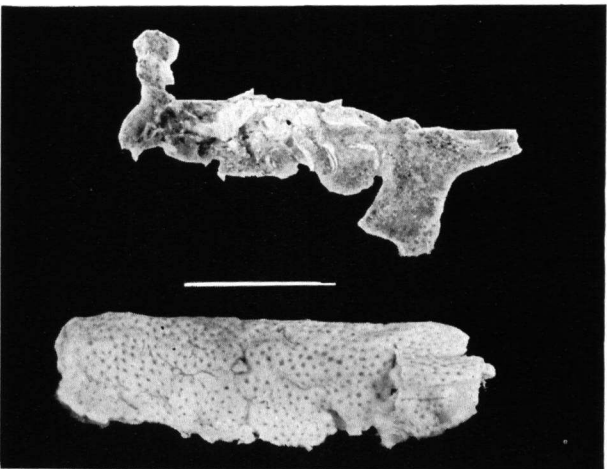
2



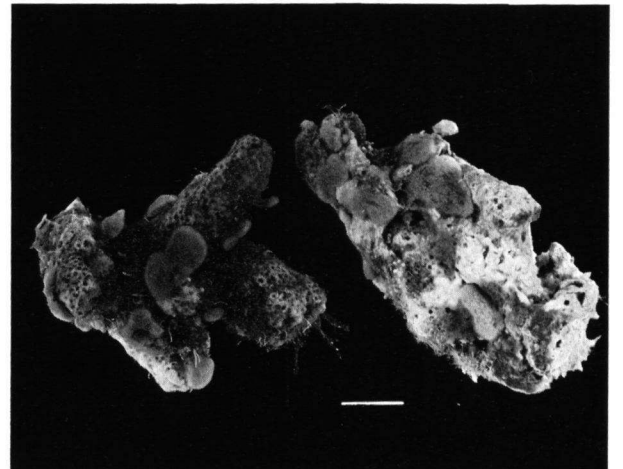
3



4



5

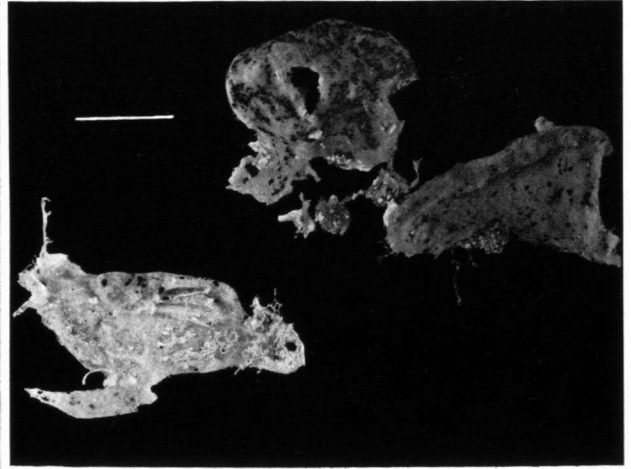


6

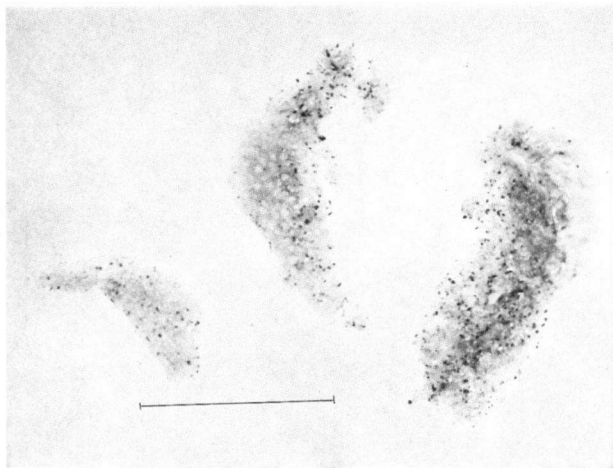
PLATE IV



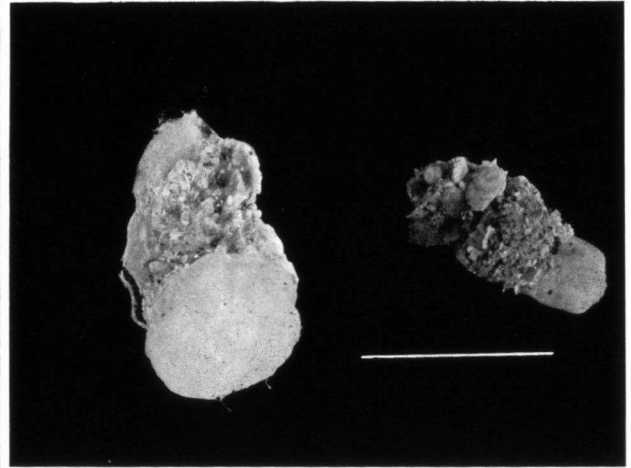
1



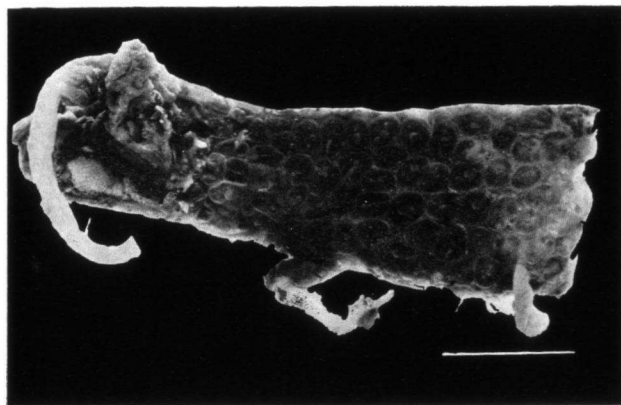
2



3



4



5

- 58 *Colella tenuicaulis* Herdman, 1899: 64, pl. Dist. 1 figs. 1 - 16.
= *Sycozoa tenuicaulis* vide: Millar, 1963: 707.
- Topotype : ZMA TU 1073. Port Jackson (Australia), Coll. W.A. Haswell (1 specimen).
The syntype series is preserved in the AMS (Reg. no. AM U. 327 - 8; they are from Port Stephens and Port Jackson).
- 59 *Corella aequabilis* Sluiter, 1904: 17, pl. IV figs. 7 - 10.
- Lectotype : ZMA TU 356.1. Siboga Exped. Stat. 256, 5° 26'.6 S 132° 32'.5 E, depth 397 m, Dec. 11, 1899 (the largest figured and dissected specimen).
Paralectotype : ZMA TU 356.2. Siboga Exped. Stat. 174 (l.c.) (1 specimen).
ZMA TU 356.3. Siboga Exped. Stat. 131, Anchorage off Beo, Karakelang Is., depth 13 m, July 24/25, 1899 (1 specimen).
ZMA TU 356.4. Siboga Exped. Stat. 129, Anchorage off Kawio- and Kamboling Is., Karkaralong group, depth 23 - 31 m, July 22/23, 1899 (2 specimens).
ZMA TU 356.5. Siboga Exped. Stat. 49 a (l.c.) (1 specimen).
ZMA TU 1259. Siboga Exped. Stat. 256 (l.c.) (1 specimen).
- 60 *Corella antarctica* Sluiter, 1905b: 471.
= *Corella eumyota* Traustedt, 1882 vide: Van Name, 1945: 212.
- Paratype : ZMA TU 357. Port Carthage, Booth Wandel Isl., Antarctica, 1905, Exped. Dr. J. Charcot (1 specimen).
The other types are as a syntype series in MNHN.
- 61 *Corynascidia sedens* Sluiter, 1904: 20, pl. VII figs. 6 - 9.
- Holotype : ZMA TU 367. Siboga Exped. Stat. 314, 7° 36' S 117° 30'.8 E, depth 694 m, Febr. 17, 1900 (holotype u.s.).
- 62 *Culeolus annulatus* Sluiter, 1904: 108, pl. XII fig. 14, pl. XIII figs. 1 - 4.
- Syntypes : ZMA TU 397.6. Siboga Exped. Stat. 135, 1° 34' N 126° 54' E, depth 1994 m, July 29, 1899 (2 specimens both dissected).
- 63 *Culeolus gigas* Sluiter, 1904: 102, pl. I fig. 1, pl. XII figs. 1 - 3.
- Holotype : ZMA TU 1230. Siboga Exped. Stat. 170, 3° 37'.7 S 131° 26'.4 E, depth 924 m, Aug. 26, 1899 (holotype u.s.).
- 64 *Culeolus herdmani* Sluiter, 1904: 105, pl. XII figs. 4 - 9.
- Syntypes : ZMA TU 397.1. Siboga Exped. Stat. 137, 0° 23'.8 N 127° 29' E, depth 472 m, Aug. 3, 1899 (4 specimens).
ZMA TU 397.2. Siboga Exped. Stat. 251, (l.c.) (1 specimen).
ZMA TU 397.3. Siboga Exped. Stat. 38, (l.c.) (1 specimen).
ZMA TU 397.4. Siboga Exped. Stat. 302, 10° 27'.9 S 123° 38'.7 E, depth 216 m, Febr. 2, 1900 (5 specimens) (In the description 6 specimens are mentioned but one probably was dissected).
- 65 *Culeolus quadrula* Sluiter, 1904: 109, pl. XIII figs. 5 - 9.
- Holotype : ZMA TU 397.5. Siboga Exped. Stat. 314 (l.c.) (holotype u.s.).
- 66 *Culeolus thysanotus* Sluiter, 1904: 106, pl. II fig. 1, pl. XII figs. 10 - 13.
- Lectotype : ZMA TU 1250. Siboga Exped. Stat. 94, 5° 11'.2 N 119° 35'.4 E, depth 450 m, June 26, 1899 (the most undamaged and figured specimen).
Paralectotype : ZMA TU 398. Same loc. (1 dissected specimen).
- 67 *Cynthia chazaliei* Sluiter, 1898a: 22, pl. II figs. 20, 30.
= *Pyura vittata* (Stimpson, 1852) vide: Van Name, 1945: 321.
- Holotype : ZMA TU 384. Santa Marta, Columbia, 1896, Coll. J. Versluijs Exped. Yacht

Chazalie (holotype u.s.).

- 68 *Cynthia discrepans* Sluiter, 1898a: 23, pl. II figs. 31 - 34, pl. III fig. 44.
= *Pyura vittata* (Stimpson, 1852) vide: Van Name, 1945: 321.
- Holotype : ZMA TU 386. Gulf of Cariaco, Venezuela, 1896, Coll. J. Versluijs Exped. Yacht Chazalie (holotype u.s.).
Specimens of Santa Marta, Columbia and Kingston present in the collections under ZMA TU 385 most probably were not used for the description as they are only referred under "Habite le.....", and ZMA TU 386 is also the figured specimen.
- 69 *Cynthia jacatrensis* Sluiter, 1890: 331, figs. 8 - 9.
= *Pyura jacatrensis* vide: Millar, 1960: 125.
- Holotype : ZMA TU 387. Bay of Batavia (= Bay of Djakarta, Indonesia), on coral debris, Coll. C.Ph. Sluiter (journ. no. 666) (holotype u.s.).
- 70 *Cynthia lutea* Sluiter, 1900a: 26, pl. 4 fig. 3, pl. 5 figs. 1 - 3.
= *Pyura pachydermatina* (Herdman, 1881) vide: Tokioka, 1967: 204.
- Lectotype : ZMA TU 868. Red Cliff, Chatham Is. (Pacific), 1896 - 1897, Coll. Dr. H. Schauinsland (the figured and dissected specimen, it was labeled *Pyura lutea*).
Paralectotype : ZMA TU 1303. Same loc. (3 specimens of which 1 dissected).
- 71 *Cynthia pallida* (Heller, 1878) var. *billitonensis* Sluiter, 1885: 183, pl. I fig. 6, pl. II figs. 1 - 11.
= *Herdmania monus* (Savigny, 1816) vide: Tokioka, 1953: 277.
- Syntypes : ZMA TU 895. Billiton, depth 4 fathoms, Coll. C.Ph. Sluiter (fragments of 4 dissected specimens, the fragments are too much mixed to separate individual specimens). (The sample was labeled *Rhabdocynthia pallida billitonensis*).
- 72 *Cynthia pulla* Sluiter, 1900a: 28, pl. 4 fig. 4 pl. 5 figs. 8 - 11.
= *Pyura pulla* vide: Brewin, 1956: 122.
- Lectotype : ZMA TU 1305. New Zealand, " von Sumner", 1896 - 1897, Coll. Dr. H. Schauinsland (the figured specimen labeled *Pyura pulla*).
Paralectotype : ZMA TU 871. Same loc. (1 dissected specimen the other 3 specimens are probably dissected by Sluiter and not in the collections).
- 73 *Cynthia rosea* Sluiter, 1887: 264, pl. I fig. 9.
= *Pyura rosea* vide: Kott, 1952: 260.
- Lectotype : ZMA TU 400. Bay of Batavia (= Bay of Djakarta, Indonesia), coral reef "Vader Smit", Coll. C. Ph. Sluiter (two specimens were probably dissected by Sluiter; they never entered the collections).
- 74 *Cynthia subuculata* Sluiter, 1900a: 27, pl. 5 figs. 4 - 7.
- Syntypes : ZMA TU 875. French Pass (New Zealand), 1896 - 1897, Coll. Dr. H. Schauinsland (5 dissected specimens labeled *Pyura subuculata*).
- 75 *Cynthia torpida* Sluiter, 1898a: 21, pl. II figs. 25 - 28.
= *Pyura vittata* (Stimpson, 1852) vide: Van Name, 1945: 321.
- Syntypes : ZMA TU 402. Santa Marta (Columbia), 1896, Coll. J. Versluijs Exped. Yacht Chazalie (2 dissected specimens).
- 76 *Cynthia trita* Sluiter, 1900a: 29, pl. 6 figs. 1 - 2.
= *Pyura trita* vide: Brewin, 1956: 122.
- Lectotype : ZMA TU 1302. Maunganui, Chatham Is. (Pacific), 1896 - 1897, Coll. Dr. H.

- Schauinsland (the only sectioned, and thus the one best known; labeled *Pyura trita*).
- Paralectotype : ZMA TU 879. Same loc. (1 specimen not dissected).
- 77 *Cystodites inflatus* Heiden, 1893: 344, pl. 1 fig. 2.
- Paratype : ZMA TU 407. Menorca, Puerto de Mahon on Costa del Sul, May 12, 1890, Coll. Will (two fragments of col.).
The other types are preserved in the MNB Reg. no. 1966.
- 78 *Cystodites rufus* Sluiter, 1909: 29, (See pl. I fig. 2 in this article).
= *Cystodytes rufus* vide: Kott, 1957: 68.
- Syntypes : ZMA TU 408. Siboga Exped. Stat. 104 (l.c.) (many colonies).
- 79 *Cystodites semicataphractus* Sluiter, 1909: 30, (See pl. I fig. 3 in this article).
= *Cystodytes semicataphractus* vide: Kott, 1957: 68.
- Holotype : ZMA TU 409. Siboga Exped. Stat. 99, 6° 7'.5 N 120° 26' E, depth 16 - 23 m, June 28/29/30, 1899 (holotype u.s.).
- 80 *Cystodites variabilis* Sluiter, 1909: 28, pl. VII fig. 12.
= *Cystodytes variabilis* vide: Kott 1957: 68.
- Syntypes : ZMA TU 396.1. Siboga Exped. Stat. 299, 10° 52'.4 S 123° 1'.1 E, depth 34 m, Jan. 27/29, 1900 (1 col. + fragments).
ZMA TU 396.2. Siboga Exped. Stat. 312 (l.c.) (1 col.).
ZMA TU 396.3. Siboga Exped. Stat. 315, Anchorage East of Sailus Besar, Paternoster Isl., depth 0 - 36 m, Febr. 17/18, 1900 (1 col.).
ZMA TU 396.4. Siboga Exped. Stat. 240 (l.c.) (3 col.).
ZMA TU 396.5. Siboga Exped. Stat. 61, Lamakwera, Solor Isl., depth 20 m, May 1/2, 1899 (1 col.).
ZMA TU 396.6. Siboga Exped. Stat. 50, Bay of Badjo, W. coast of Flores, depth 40 m, April 16/18, 1899 (1 col.).
ZMA TU 396.7. Siboga Exped. Stat. 43, Anchorage off Pulu Sarassa Postillon Is., depth up to 36 m, April 4/5, 1899 (1 col.).
- 81 *Dendrodoa subpedunculata* Ritter, 1899: 514, figs. 6 - 8.
= *Dendrodoa aggregata* (Rathke, 1806) vide: Van Name, 1945: 275.
- Paratype : ZMA TU 424. St. Paul Isl., Pribilof Is., 1896, Coll. Jordan (1 specimen).
- 82 *Dendrodoa tuberculata* Ritter, 1899: 512, figs. 1 - 5.
= *Dendrodoa aggregata* (Rathke, 1806) vide: Van Name, 1945: 275.
- Paratype : ZMA TU 423. St. Paul Isl., Pribilof Is., 1896, Coll. Jordan (1 specimen).
- 83 *Diandrocarpa brakenhielmi* Michaelsen, 1904: 50.
= *Symplegma viride* Herdman, 1886 vide: Van Name, 1945: 232.
- Paratype : ZMA TU 421. Dar es Salaam.
- 84 *Dicopia fimbriata* Sluiter, 1905c: 325, fig. 1.
- Syntypes : ZMA TU 428. Siboga Exped. Stat. 271, 5° 46'.7 S 134° 0' E, depth 1788 m, Dec. 21, 1899 (6 specimens). (From Siboga Exped. Stat. 272, Dodo, Aru Is., depth 31 m, Dec. 21/23, 1899 one specimen ZMA TU 1246. is present it is labeled as type but not used for description so it does not belong to the type series; the figured specimen is not identifiable with one of the specimens).
- 85 *Didemnoides lambitum* Sluiter, 1900a: 18, pl. 4 fig. 1.
= *Didemnum lambitum* vide: Millar, 1963: 700.
- Lectotype : ZMA TU 1304. Waitangi, Chatham Is. Pacific, 1896 - 1897, Coll. Dr. H. Schauinsland (the figured and largest col.).

- Paralectotypes: ZMA TU 455. Same loc. (5 col.).
- 86 *Didemnopsis profundus* Sluiter, 1909: 44, pl. III fig. 13, pl. VII fig. 8.
= *Trididemnum profundus* vide: Kott, 1962: 275.
- Holotype : ZMA TU 431. Siboga Exped. Stat. 306, 8° 27' S 122° 54'.5 E, depth 247 m, Febr. 8, 1900 (holotype u.s.).
- 87 *Didemnum albopunctatum* Sluiter, 1909: 58, pl. VI fig. 8.
= ? *Leptoclinides reticulatus* Sluiter, 1909 vide: Tokioka, 1967: 89.
- Lectotype : ZMA TU 433.2. Siboga Exped. Stat. 231, Ambon-anchorage, depth 40 m, Nov. 14/18, 1899 (this col. on *Rhopalopsis fusca* is the figured col.).
- Paralectotypes: ZMA TU 433.1. Siboga Exped. Stat. 273, Anchorage off Pulu Jedan E. coast of Aru Is., depth 13 m, Dec. 23/26, 1899 (1 col.).
ZMA TU 433.3. Siboga Exped. Stat. 144 (l.c.) (6 col. and fragments).
ZMA TU 433.4. Siboga Exped. Stat. 89, Pulu Kaniungan ketjil, depth 11 m, June 21, 1899 (2 col.).
ZMA TU 433.5. Siboga Exped. Stat. 34, Anchorage off Labuan Pandan Lombok, depth 18 m, March 27, 1899 (8 col.).
- 88 *Didemnum caesium* Sluiter, 1909: 53, pl. III fig. 22.
- Holotype : ZMA TU 434. Siboga Exped. Stat. 282 (l.c.) (holotype u.s.).
- 89 *Didemnum chartaceum* Sluiter, 1909: 57 (See pl. I fig. 4 in this article).
- Syntypes : ZMA TU 437. Siboga Exped. Stat. 50 (l.c.) (2 dissected col.).
- 90 *Didemnum cuspidatum* Sluiter, 1909: 57 (See pl. I fig. 5 in this article).
- Syntypes : ZMA TU 440.1. Siboga Exped. Stat. 282 (l.c.) (8 col., perhaps 3 col. of ZMA TU 440.2. are mixed with this sample).
ZMA TU 440.2. Siboga Exped. Stat. 37, Sallus Ketjil, Paternoster Is., depth 0 - 27 m, March 30/31, 1899 (22 col.).
- 91 *Didemnum dealbatum* Sluiter, 1909: 55 (See pl. I fig. 6 in this article).
- Syntypes : ZMA TU 441.1. Siboga Exped. Stat. 273 (l.c.) (fragm. of col.).
ZMA TU 441.2. Siboga Exped. Stat. 301, 10° 38' S 123° 25'.2 E, depth 22 m, Jan. 30/Febr. 1, 1900 (fragm. of col.).
- 92 *Didemnum digestum* Sluiter, 1909: 54, pl. III fig. 24, pl. VI fig. 10.
- Lectotype : ZMA TU 442.3. Siboga Exped. Stat. 99 (l.c.) (The only dissected specimen which agrees most with the figure).
- Paralectotypes: ZMA TU 442.1. Siboga Exped. Stat. 315 (l.c.) (1 col.).
ZMA TU 442.2. Siboga Exped. Stat. 127, Taruna Bay, Great Sangir Isl., depth 45 m, July 20/21, 1899 (1 col.).
- 93 *Didemnum dispersum* Sluiter, 1909: 54, pl. III fig. 23, pl. VII fig. 9.
- Syntypes : ZMA TU 443.1. Siboga Exped. Stat. 133, Anchorage off Lirung, Salibabu Isl., depth 0 - 36 m, July 25/27, 1899 (6 col.).
ZMA TU 443.2. Siboga Exped. Stat. 303 (l.c.) (7 col.).
- 94 *Didemnum elongatum* Sluiter, 1909: 66, pl. IV fig. 1.
- Syntypes : ZMA TU 444. Siboga Exped. Stat. 215, Sounding due West, 1300 m distant from the N. point of Kabia Isl., reef, depth 701 m, Oct. 28/29, 1899 (1 col. dissected).
ZMA TU 445. Siboga Exped. Stat. 78, Lumu-Lumu-Schoal, Borneo-bank, depth 34 m, June 10/11, 1899 (1 col. dissected).
- 95 *Didemnum fragilis* Sluiter, 1909: 56 (See pl. II fig. 1 in this article).

- Lectotype : ZMA TU 446.3. Siboga Exped. Stat. 152, Wunoh-Bay, N.W. coast of Waigeu Isl., depth 32 m, August 12/13, 1899 (this fragment of substrate with col. is selected as it is the only well preserved one, the largest one and, moreover, the one dissected by Sluiter).
- Paralectotypes: ZMA TU 446.1. Siboga Exped. Stat. 129 (l.c.) (2 col.).
ZMA TU 446.2. Siboga Exped. Stat. 213, Saleyer-anchorage and surroundings, including Pulu Pasi Tanette, depth up to 36 m, Sept. 26/Oct. 26, 1899 (1 col.).
- 96 *Didemnum fraterum* Sluiter, 1909: 60, pl. III fig. 25.
- Holotype : ZMA TU 447. Siboga Exped. Stat. 213 (l.c.) (9 identical col. on a *Chorinius* (?) specimen are selected to be the holotype).
- 97 *Didemnum fucates* Sluiter, 1909: 47 (See pl. II fig. 2 in this article).
- Syntypes : ZMA TU 448. Siboga Exped. Stat. 89 (l.c.) (2 col.).
- 98 *Didemnum fuscum* Sluiter, 1909: 52, pl. III fig. 21.
- Syntypes : ZMA TU 451. Siboga Exped. Stat. 164, 1° 42'.5 S 130° 47' E, depth 32 m, August 20, 1899 (many colonies not counted to prevent the probable inclusion of other species also present in this sample).
- 99 *Didemnum jedanensis* Sluiter, 1909: 59 (See pl. II fig. 3 in this article).
- Syntypes : ZMA TU 454.1. Siboga Exped. Stat. 89 (l.c.) (1 col.).
ZMA TU 454.2. Siboga Exped. Stat. 273 (l.c.) together with part of the sample of Stat. 303 (l.c.) (12 fragments in total).
ZMA TU 454.3. Siboga Exped. Stat. 303 (l.c.) (1 col.).
(The col. described from Stat. 240 are not preserved in the collections).
- 100 *Didemnum lutarium* Van Name 1910: 371, text figs. 8, 9, pl. 37 fig. 7.
= *Didemnum candidum* Savigny, 1816 *lutarium* vide: Van Name, 1945: 86.
- Syntype : ZMA TU 456. Vineyard Haven, Mass. (1 col.).
- 101 *Didemnum maeandrium* Sluiter, 1909: 64, pl. III figs. 31 - 32, pl. VIII fig. 5.
- Lectotype : ZMA TU 457. Siboga Exped. Stat. 89 (l.c.) (the figured col.).
Paralectotype : ZMA TU 459. Siboga Exped. Stat. 131 (l.c.) (5 col.).
- 102 *Didemnum makropnous* Sluiter, 1909: 56 (See pl. II fig. 4 in this article).
- Syntypes : ZMA TU 461.1. Siboga Exped. Stat. 64, Kamaragibay, Tanah Djampeah, depth 0 - 32 m, May 4/5, 1899 (\pm 11 col.).
ZMA TU 461.2. Siboga Exped. Stat. 99 (l.c.) (1 col.).
ZMA TU 461.3. Siboga Exped. Stat. 164 (l.c.) (2 col.).
ZMA TU 461.4. Siboga Exped. Stat. 213 (l.c.) (1 col.).
ZMA TU 461.5. Siboga Exped. Stat. 277, Kulewatti (Sollot) Bay, Dammar Isl., depth 45 m, Jan. 9/11, 1900 (1 col.).
ZMA TU 461.6. Siboga Exped. Stat. 313, Anchorage East of Dangar Besar, Saleh Bay, depth 0 -36 m, Febr. 14/16, 1900 (1 col.).
- 103 *Didemnum membranaceum* Sluiter, 1909: 58 (See pl. II fig. 5 in this article).
- Syntypes : ZMA TU 471.1. Siboga Exped. Stat. 50 (l.c.) (many col. on one fragment of substrate).
ZMA TU 471.2. Siboga Exped. Stat. 37 (l.c.) (4 col.).
- 104 *Didemnum montosum* Sluiter, 1909: 61, pl. III figs. 26 - 27, pl. VIII fig. 6.
- Syntypes : ZMA TU 462. Siboga Exped. Stat. 273 (l.c.) (fragments of at least 3 col.).
- 105 *Didemnum ramosum* Sluiter, 1909: 63 (See pl. II fig. 6 in this article).

- Lectotype : ZMA TU 476.3. Siboga Exped. Stat. 273 (l.c.) (This col. is the most typical one (Sluiter, 1909: 64) and the dissected one).
Paralectotypes: ZMA TU 476.1. Siboga Exped. Stat. 37 (l.c.) (1 col.).
ZMA TU 476.2. Siboga Exped. Stat. 99 (l.c.) (1 col.).
ZMA TU 1271. Siboga Exped. Stat. 273 (l.c.) (1 col.).
- 106 *Didemnum recurvatum* Sluiter, 1909: 51, pl. III figs. 19 - 20.
= ? *Didemnum (Didemnum) candidum* Savigny, 1816 vide: Tokioka, 1967: 62.
Holotype : ZMA TU 474. Siboga Exped. Stat. 250 (l.c.) (one fragment of substrate with col., holotype u.s.).
- 107 *Didemnum reticulatum* Sluiter, 1909: 60 (See pl. III fig. 1 in this article).
= *Leptoclinides reticulatus* vide: Tokioka, 1967: 89.
Syntypes : ZMA TU 475.1. Siboga Exped. Stat. 37 (l.c.) (11 col.).
ZMA TU 475.2. Siboga Exped. Stat. 43 (l.c.) (3 col.).
ZMA TU 475.3. Siboga Exped. Stat. 53, Bay of Nangamessi, Sumba, depth 0 - 36 m, April 21/22, 1899 (4 col.).
ZMA TU 475.4. Siboga Exped. Stat. 129 (l.c.) (1 col. the other one mentioned has probably gone lost).
ZMA TU 475.5. Siboga Exped. Stat. 273 (l.c.) (2 col.).
ZMA TU 475.6. Siboga Exped. Stat. 315 (l.c.) (1 col.).
ZMA TU 475.7. Siboga Exped. Stat. 322, 1.5 mile S. of Tandjong Lajar, S. coast of Bawean Isl., depth 32 m, Febr. 24, 1900 (1 col.).
- 108 *Didemnum semifusum* Sluiter, 1909: 62, pl. III figs. 28 - 30.
= *Didemnum (Polysyncraton) semifusum* vide: Tokioka, 1967: 78.
Syntypes : ZMA TU 479. Siboga Exped. Stat. 37 (l.c.) (fragm. of probably 3 col.).
ZMA TU 477. Siboga Exped. Stat. 279, Rumah Kuda Bay, Roma Isl., depth 36 m, Jan. 11/13, 1900 (2 col.).
- 109 *Didemnum spongioides* Sluiter, 1909: 67, pl. IV fig. 2, pl. VI fig. 9 + text fig.
= *Didemnum (Leptoclinum) spongioides* vide: Tokioka, 1967: 70.
Lectotype : ZMA TU 472. Siboga Exped. Stat. 273 (l.c.) (the col. photographed on pag. 68 with three dissected fragments).
Paralectotype : ZMA TU 1272. Same loc. (4 col. and many fragm.).
- 110 *Didemnum tabulatum* Sluiter, 1909: 49, pl. III figs. 17 - 18, pl. VI fig. 7.
Syntypes : ZMA TU 480.1. Siboga Exped. Stat. 43 (l.c.) (1 col.).
ZMA TU 480.2. Siboga Exped. Stat. 129 (l.c.) (1 col.).
ZMA TU 480.3. Siboga Exped. Stat. 273 (l.c.) (2 col.).
- 111 *Didemnum tenebricosum* Sluiter, 1909: 48, pl. III figs. 14 - 16.
Holotype : ZMA TU 481. Siboga Exped. Stat. 301 (l.c.) (holotype u.s.; Sluiter stated two specimens to be present, probably this is a slip of the pen as two specimens from the single colony present are figured).
- 112 *Didemnum timorensis* Sluiter, 1909: 51 (See pl. III fig. 2 in this article).
Lectotype : ZMA TU 1274. Siboga Exped. Stat. 296, 10° 14' S 124° 5'.5 E, depth 8 - 36 m, Jan. 24/26, 1900 (the best studied col. as it is the only one sectioned).
Paralectotype : ZMA TU 482. Same loc. (3 col. not dissected).
- 113 *Didemnum vanderhorsti* Van Name, 1924: 25, fig. 1.
Holotype : ZMA TU 484. Spaanse Water, Curaçao, May 12, 1920, Coll. C.J. van der Horst.
Paratypes : ZMA TU 485.1. Spaanse Water, Curaçao, April 29, 1920, Coll. C.J. van der Horst (1 specimen).
ZMA TU 485.2. Spaanse Water, Curaçao, May 9, 1920, Coll. C.J. van der

Horst (2 specimens).

- 114 *Diplosoma purpurea* Sluiter, 1898a: 32, pl. II fig. 42, pl. III fig. 49.
Lectotype : ZMA TU 1298. Branco, Cape Vert Is., depth 25 m, 1896, Coll. J. Versluijs
Exped. Yacht Chazalie (the figured col.).
Paralectotypes: ZMA TU 488. Same loc. (22 col.).
- 115 *Diplosoma viride* Herdman, 1906: 341, pl. VIII figs. 34 - 40, pl. IX fig. 6.
= *Leptoclinum virens* Hartmeyer, 1909 vide: Tokioka, 1967: 98.
Syntypes : ZMA TU 489. Ceylon, 1902, Coll. W.A. Herdman (part of col. preserved in
BMNH Reg. no. 07.8.30.42).
- 116 *Diplosomoides cuculliferum* Sluiter, 1909: 90, pl. IV fig. 15, pl. VII fig. 14.
= *Lissoclinum cucaliferum* vide: Kott, 1962: 308.
Holotype : ZMA TU 490. Siboga Exped. Stat. 273 (l.c.) (holotype u.s.).
- 117 *Diplosomoides dubium* Hartmeyer, 1903: 368, pl. XIV figs. 11 - 13.
= *Lissoclinum aureum* Verrill, 1871 vide: Van Name, 1945: 111.
Paratype : ZMA TU 491. North East Land, Spitsbergen, E. side, 79° 35' N 28° 0' W,
August 6, depth 66 m, Coll. Römer & Schaudinn (1 col.).
- 118 *Diplosomoides fragilis* Van Name, 1902: 370, pl. LIII figs. 57 - 58, pl. LXI fig. 126.
= *Lissoclinum fragile* vide: Van Name, 1945: 113.
Paratype : ZMA TU 492. Bermuda, 1898 - 1901, Coll. W.G. v. Name (1 col.).
- 119 *Diplosomoides triangulum* Sluiter, 1909: 86, pl. IV fig. 12, pl. VI fig. 13.
= *Lissoclinum triangulum* vide: Kott, 1962: 308.
Holotype : ZMA TU 499. Siboga Exped. Stat. 213 (l.c.) (holotype u.s.).
- 120 *Diplosomoides triforme* Sluiter, 1909: 87, pl. IV fig. 13.
= *Lissoclinum triforme* vide: Kott, 1962: 308.
Holotype : ZMA TU 498. Siboga Exped. Stat. 310 (l.c.) (holotype u.s.).
- 121 *Diplosomoides tropicum* Sluiter, 1909: 88, pl. IV fig. 14, pl. VII fig. 13.
= *Lissoclinum tropicum* vide: Kott, 1962: 308.
Lectotype : ZMA TU 500. Siboga Exped. Stat. 261, Elat, W. coast of Great Kei Isl., depth
27 m, Dec. 18/19, 1899 (on this col. the description is chiefly based and it is
a part of this col. which is figured).
Paralectotypes: ZMA TU 473.1. Siboga Exped. Stat. 47, Bay of Bima, depth 55 m, April 8/12,
1899 (4 col.).
ZMA TU 473.2. Siboga Exped. Stat. 58, Anchorage off Seba, Sevu, depth 27 m,
April 25, 1899 (4 col.).
ZMA TU 473.3. Siboga Exped. Stat. 78 (l.c.) (many col.).
ZMA TU 473.4. Siboga Exped. Stat. 91 (l.c.) (3 col.).
ZMA TU 473.5. Siboga Exped. Stat. 125, Anchorage off Sawan, Siau Isl., depth
27 m, July 18/19, 1899 (3 col.).
ZMA TU 473.6. Siboga Exped. Stat. 129 (l.c.) (10 col.).
ZMA TU 473.7. Siboga Exped. Stat. 131 (l.c.) (4 col.).
ZMA TU 473.8. Siboga Exped. Stat. 172, Gisser; anchorage between this is-
land and Ceram-laut, depth 18 m, August 26/28, 1899 (5 col.).
ZMA TU 473.9. Siboga Exped. Stat. 193, Sanana Bay, E. coast of Sula Besi,
depth 22 m, Sept. 13/14, 1899 (2 col.).
ZMA TU 473.10. Siboga Exped. Stat. 213 (l.c.) (4 col.).
ZMA TU 473.11. Siboga Exped. Stat. 215 (l.c.) (2 col.).
ZMA TU 473.12. Siboga Exped. Stat. 220, Anchorage off Pasir Pandjang, W.
coast of Binongka, depth 278 m, Nov. 1/3, 1899 (2 col.).
ZMA TU 473.13. Siboga Exped. Stat. 313 (l.c.) (2 col.).

- 122 *Distalpia intermedia* Heiden, 1893: 348.
Paratype : ZMA TU 566. Menorca, 1890, Coll. Will (1 col.).
The other types are preserved in the MNB Reg. no. 1971, and 1972.
- 123 *Distalpia occidentalis* Bancroft, 1899: 59, pls. 1 - 6.
Syntype : ZMA TU 565. Dillere's Beach, California (1 col.).
- 124 *Distoma caeruleum* Sluiter, 1898b: 14, pl. 2 fig. 4, pl. 3 fig. 11.
= *Eudistoma caeruleum* vide: Millar, 1962: 157.
Lectotype : ZMA TU 1287. Durban (S. Africa), 1894, Coll. M. Weber (the figured and dissected col.).
Paralectotypes: ZMA TU 501. and ZMA TU 502. Same loc. (31 col.).
- 125 *Distoma circumvallata* Sluiter, 1900a: 8, pl. 1 fig. 4, pl. 2 fig. 6.
= *Eudistoma circumvallatum* vide: Kott, 1957: 70.
Holotype : ZMA TU 784. d'Urville Isl., New Zealand, 1896 - 1897, Coll. Dr. H. Schauinsland, (holotype u.s. labeled *Polycitor circumvallata*).
- 126 *Distoma deerrata* Sluiter, 1895: 167, pl. VI figs. 5 - 7.
= *Hypodistoma deerrata* vide: Tokioka, 1967: 124.
Holotype : ZMA TU 38. Thursday Isl. in the Torres Strait, Coll. R. Semon (holotype u.s.).
- 127 *Distoma fusca* Sluiter, 1900a: 7, pl. 1 fig. 3, pl. 2 figs. 4 - 5.
Lectotype : ZMA TU 507. Laysan, 1896 - 1897, Coll. Dr. H. Schauinsland (indicated with "type" on the label).
Paralectotypes: ZMA TU 783. Same loc. (5 col.) (Sluiter did not indicate these as "types" but labeled them with *Polycitor austerum* Hartmeyer.).
- 128 *Distoma illotum* Sluiter, 1898b: 16, pl. 1 fig. 3, pl. 3 fig. 7.
= *Eudistoma illotum* vide: Millar, 1962: 160.
Lectotype : ZMA TU 1285. Seapoint near Cape Town, 1894, Coll. M. Weber (the figured col. together with fragments originating from dissecting).
Paralectotypes: ZMA TU 504. Same loc. (many frag. of 1 col.).
- 129 *Distoma laysani* Sluiter, 1900b: 9, pl. 1 fig. 5, pl. 2 fig. 7.
= *Eudistoma laysani* vide: Tokioka, 1967: 119.
Syntypes : ZMA TU 795. Laysan, 1896 - 1897, Coll. Dr. H. Schauinsland (5 col. labeled *Polycitor laysani*).
- 130 *Distoma modestum* Sluiter, 1898b: 18, pl. 1 fig. 5, pl. 3 fig. 8.
= *Eudistoma modestum* vide: Millar, 1962: 158.
Lectotype : ZMA TU 1288. Coast near Durban (S. Africa), 1894, Coll. M. Weber (the figured and dissected col.).
Paralectotypes: ZMA TU 505. Same loc. (5 col.).
- 131 *Distoma nitidum* Sluiter, 1898b: 17, pl. 1 fig. 4, pl. 3 fig. 10.
= *Polycitor nitidus* vide: Kott, 1957: 80.
Lectotype : ZMA TU 1286. Coast near Durban (S. Africa), 1894, Coll. M. Weber (the figured col.).
Paralectotype : ZMA TU 506. Same loc. (16 fragments of many col.).
- 132 *Distoma parva* Sluiter, 1900a: 6, pl. 1 fig. 2.
= *Archidistoma parva* vide: Kott, 1957: 69.
Lectotype : ZMA TU 1301. Laysan, 1896 - 1897, Coll. Dr. H. Schauinsland (the figured

- and largest col.).
Paralectotypes: ZMA TU 508. Laysan, 1896 - 1897, Coll. Dr. H. Schauinsland (1 col.).
ZMA TU 803. Laysan, 1896 - 1897, Coll. Dr. H. Schauinsland (9 col. labeled by Sluiter *Polycitor parvum*).
- 133 *Distoma rhodopyge* Sluiter, 1898b: 12, pl. 1 fig. 2, pl. 3 figs. 5 - 6.
= *Eudistoma rhodopyge* vide: Kott, 1957: 70.
- This species is not present in the collection though a file card proves it has been.
- 134 *Distomus (Alloeocarpa) hupferi* Michaelsen (1904) var. *compacta* Sluiter, 1919: 4, figs. 3 - 6.
- Syntypes : ZMA TU 174. Senegal, depth 15 fathoms, Coll. F.P. Vermeulen (1 col.).
ZMA TU 175. Baie du Lévrier, W. Africa, Coll. F.P. Vermeulen (1 col.).
The col. of Cape Blanco, West Africa (ZMA TU 172) is not considered to be a syntype as Sluiter never labeled these as *Distomus (A.) hupferi*.
- 135 *Distomus (Alloeocarpa) malayensis* Sluiter, 1919: 5, figs. 7 - 8.
= *Oxycorynia malayensis* vide: Kott, 1957: 94.
- Holotype : ZMA TU 173. Java Sea, 6° 26' S 112° 41' E, depth 30 fathoms, Coll. P.N. van Kampen, "Gier Exped.", Dec. 14, 1907 (holotype u.s.).
- 136 *Distomus tridentatus* Heiden, 1893: 347.
- Paratype : ZMA TU 813. Menorca, near Mahon, on Costa del Sul, May 24, 1890, Coll. Will (1 fragm. of col. labeled *Polycitor tridentatus*).
- 137 *Ecteinascidia diaphanis* Sluiter, 1885: 168, pl. I fig. 2, pl. II figs. 7 - 10.
- Holotype : ZMA TU 524. Between Mendanau and Billiton, depth 6 fathoms, Coll. C.Ph. Sluiter (holotype u.s.).
- 138 *Ecteinascidia diligens* Sluiter, 1900a: 3, pl. 2 figs. 1 - 3.
- Syntypes : ZMA TU 525. Laysan, E. side on stones, 1896 - 1897, Coll. Dr. H. Schauinsland (3 specimens and fragments).
- 139 *Ecteinascidia euphues* Sluiter, 1895: 325, pl. XXII figs. 1 - 3.
- Holotype : ZMA TU 523. Thursday Isl., Torres Strait, Coll. R. Semon (holotype u.s.).
- 140 *Ecteinascidia garstangi* Sluiter, 1898b: 10, pl. 1 fig. 1, pl. 3 figs. 1 - 4.
- Holotype : ZMA TU 526. Coast of Mozambique, 1894, Coll. M. Weber (holotype u.s.).
- 141 *Ecteinascidia multiclathrata* Sluiter, 1904: 12, pl. III figs. 6 - 8.
- Holotype : ZMA TU 558.4. Siboga Exped. Stat. 234 (l.c.) (holotype u.s.).
- 142 *Ecteinascidia nexa* Sluiter, 1904: 11, pl. III figs. 1 - 5.
- Syntypes : ZMA TU 558.5. Siboga Exped. Stat. 129 (l.c.) (one col. of 4 specimens and 1 separated specimen probably from the same figured col.).
- 143 *Ecteinascidia psammodes* Sluiter, 1895: 326, pl. XXII figs. 4 - 6.
- Holotype : ZMA TU 529. Thursday Isl., Torres Strait, Coll. R. Semon (holotype u.s.).
- 144 *Ecteinascidia rubricollis* Sluiter, 1885: 163, pl. I fig. 1, pl. II figs. 4 - 6.
- Holotype : ZMA TU 978. Billiton, depth 6 fathoms, Coll. C.Ph. Sluiter (holotype u.s.).

- 145 *Eugyra bilabiata* Sluiter, 1887: 243, pl. I fig. 6.
Syntypes : ZMA TU 532. Bay of Batavia (= Bay of Djakarta, Indonesia), depth 6 - 10 fathoms, Coll. C.Ph. Sluiter (this sample contains two dissected specimens and fragm. of probably more syntypes).
- 146 *Eugyra molguloides* Sluiter, 1904: 111, pl. XIII figs. 10 - 15.
Lectotype : ZMA TU 1265. Siboga Exped. Stat. 133 (l.c.) (the figured and dissected specimen).
Paralectotypes: ZMA TU 534. Same loc. (2 specimens).
- 147 *Glossoforum sundaicum* Sluiter, 1909: 97, pl. V fig. 4.
= *Polyclinum sundaicum* vide: Kott, 1963: 81.
Syntypes : ZMA TU 550.1. Siboga Exped. Stat. 58 (l.c.) (1 col.).
ZMA TU 550.2. Siboga Exped. Stat. 215 (l.c.) (The description has been based chiefly on these 6 col. To select one as lectotype was impossible, however).
ZMA TU 550.3. Siboga Exped. Stat. 252, W. side of Taam Isl., depth 9 - 36 m, Dec. 8/9, 1899, (many col.).
- 148 *Gynandrocampa latericius* Sluiter, 1904: 94, pl. XV figs. 8 - 11.
= *Polyandrocampa latericius* vide: Sluiter, 1904: 121.
= *Polyandrocampa (Eusynstyela) latericius* vide: Millar, 1963: 732.
Holotype : ZMA TU 562.1. Siboga Exped. Stat. 43 (l.c.) (holotype u.s.).
- 149 *Gynandrocampa maxima* Sluiter, 1904: 93, pl. XV figs. 5 - 7.
= *Polyandrocampa maxima* vide: Sluiter, 1904: 121.
Holotype : ZMA TU 562.2. Siboga Exped. Stat. 133 (l.c.) (holotype u.s.).
- 150 *Gynandrocampa nigricans* Sluiter, 1904: 91, pl. XV figs. 1 - 4.
= *Diandrocampa nigricans* vide: Sluiter, 1904: 121.
Syntypes : ZMA TU 562.3. Siboga Exped. Stat. 43 (l.c.) (5 col.).
- 151 *Gynandrocampa purpurea* Sluiter, 1904: 96, pl. XV figs. 14 - 15.
= *Diandrocampa purpurea* vide: Sluiter, 1904: 122.
Syntypes : ZMA TU 551. Siboga Exped. Stat. 248, Anchorage off Rumah Lusi, N. point of Tiur Isl., depth 0 - 54 m, Dec. 4/5, 1899 (1 col.).
ZMA TU 552. Siboga Exped. Stat. 209, Anchorage off the S. point of Kabaena Isl., depth 22 m, Sept. 23, 1899 (1 col.).
ZMA TU 553. Siboga Exped. Stat. 81, Pulu Sebangkatan, Borneo-bank, depth 34 m, June 14, 1899 (1 col.).
- 152 *Gynandrocampa quadricorniculis* Sluiter, 1904: 95, pl. XV figs. 12 - 13.
= *Diandrocampa quadricorniculis* vide: Sluiter, 1904: 121.
Holotype : ZMA TU 562.4. Siboga Exped. Stat. 258 (l.c.) (holotype u.s.).
- 153 *Gynandrocampa similis* Sluiter, 1904: 97, pl. XV figs. 16 - 17.
= *Diandrocampa similis* vide: Sluiter, 1904: 122.
Lectotype : ZMA TU 562.5. Siboga Exped. Stat. 77, 3° 27' S 117° 36' E, depth 59 m, June 10, 1899 (this is the dissected col. and therefore the one on which most of the description is based).
Paralectotypes: ZMA TU 562.6. Siboga Exped. Stat. 49a (l.c.) (1 col.).
There is one more col. from Sailus Ketjil collected by the Siboga Exped. (ZMA TU 554) identified by Sluiter; it is, however, not a type as it is not mentioned in the description.
- 154 *Gynandrocampa systematica* Sluiter, 1904: 98, pl. XV figs. 18 - 21.
= *Chorizocampa systematica* vide: Sluiter, 1904: 122.

- Lectotype : ZMA TU 562.4. Siboga Exped. Stat. 282 (l.c.) (this is the dissected col. on which the description is chiefly based).
Paralectotype : ZMA TU 1264. Same loc. (this is the figured col.).
- 155 *Halocynthia breviramosa* Sluiter, 1904: 49, pl. XI figs. 5 - 7.
Holotype : ZMA TU 405.1. Siboga Exped. Stat. 240 (l.c.) (holotype u.s.).
- 156 *Halocynthia johnsoni* Ritter, 1909: 65, pls. 7 - 14.
= *Pyura haustor* (Stimpson, 1864) vide: Van Name, 1945: 338.
Paratype : ZMA TU 867. San Diego Bay, 1901 - 1902, Coll. W.E. Ritter (one specimen).
- 157 *Halocynthia polycarpa* Sluiter, 1904: 50, pl. XI figs. 8 - 9.
= *Pyura polycarpa* vide: Kott, 1952: 261.
Holotype : ZMA TU 405.4. Siboga Exped. Stat. 259, 5° 29'.2 S 132° 52'.5 E, depth 487 m, Dec. 16, 1899 (holotype u.s.).
- 158 *Halocynthia transversaria* Sluiter, 1904: 48, pl. XI figs. 1 - 4.
Lectotype : ZMA TU 403. Siboga Exped. Stat. 258 (l.c.) (the best preserved and figured specimen labeled *Cynthia transversaria*).
Paralectotype : ZMA TU 404. Siboga Exped. Stat. 240 (l.c.) (two dissected specimens).
- 159 *Heterostigma fagei* C. & F. Monniot, 1961: 270, figs. 1B, 2.
Paratypes : ZMA TU 563. Banyuls, depth 5 - 20 m, in sand, 1961, Coll. C. and F. Monniot (8 specimens) (holotype and other paratypes in MNHN).
- 160 *Hexacrobylus psammatodes* Sluiter, 1905c: 326, fig. 2.
Holotype : ZMA TU 564. Siboga Exped. Stat. 211, 5° 40'.7 S 120° 45'.5 E, depth 1158 m, Sept. 25, 1899 (holotype u.s.).
- 161 *Holozoa domuncula* Hartmeyer, 1913: 136 (90), figs. 1 - 5, pl. VII fig. 2, pl. VIII fig. 2.
= *Distalpia domuncula* vide: Kott, 1957: 95.
Paratype : ZMA TU 567. False Bay, Coll. L. Schultze (1 col.).
- 162 *Leptoclinum asteropum* Sluiter, 1895: 175, pl. VIII figs. 5 - 8.
= *Didemnum tenue* (Herdman, 1886) vide: Van Name, 1945: 90.
Holotype : ZMA TU 572. Ambon, Coll. R. Semon (holotype u.s.; the author refers in the description to only one colony, but under "locality" he stated some fragments to be present. In the collections one col. broken in fragm. represents the material on which the description is based).
- 163 *Leptoclinum calificiforme* Sluiter, 1909: 82, pl. IV fig. 10.
Holotype : ZMA TU 573. Siboga Exped. Stat. 99 (l.c.) (holotype u.s.).
- 164 *Leptoclinum ceylonicum* Herdman, 1906: 338, pl. VIII figs. 15 - 18, pl. IX figs. 1 - 2.
Syntypes : ZMA TU 574. Ceylon, Stat. XIX in Palk Bay, Coll. W.A. Herdman, depth 8 fathoms; (part of col. preserved in BMNH Reg. no. 07.8.30.37).
- 165 *Leptoclinum ceylonicum* Herdman, 1906 var. *planum* Herdman, 1906: 339, pl. IX fig. 4.
Syntypes : ZMA TU 575. Ceylon, Stat. LXIX Chilaw Paar, depth 8 - 11 fathoms, Coll. W.A. Herdman (part of col. preserved in BMNH Reg. no. 07.8.30.38).
- 166 *Leptoclinum cineraceum* Sluiter, 1898a: 30, pl. II figs. 41 - 41a, pl. III fig. 48.

- = ? *Didemnum candidum* Savigny, 1816 vide: Van Name, 1945: 83.
- Holotype : ZMA TU 577. Kingston, Jamaica, 1896, Coll. J. Versluijs Exped. Yacht Chazalie (holotype u.s.).
- 167 *Leptoclinum conchyliatum* Sluiter, 1898 a: 29, pl. III fig. 47.
= ? *Didemnum candidum* Savigny, 1816 vide: Van Name, 1945: 83.
- Lectotype : ZMA TU 141. Schottegat, Curaçao, 1896, Coll. J. Versluijs Exped. Yacht Chazalie (the figured col.).
Paralectotypes: ZMA TU 578. Kingston, Jamaica, 1896, Coll. J. Versluijs Exped. Yacht Chazalie (30 col.).
- 168 *Leptoclinum cretaceum* Sluiter, 1898 b: 36, pl. 1 fig. 11, pl. 5 figs. 7 - 10.
- Lectotype : ZMA TU 602. Coast of Mozambique, 1894, Coll. M. Weber (the figured col.).
Paralectotypes: ZMA TU 1294.1. Same loc. (2 col.).
- 169 *Leptoclinum discrepans* Sluiter, 1909: 77, pl. IV fig. 8.
- Syntypes : ZMA TU 579.1. Siboga Exped. Stat. 172 (l.c.) (3 col., one col. lost probably by dissecting).
ZMA TU 579.2. Siboga Exped. Stat. 234 (l.c.) (3 col. of which 1 dissected).
- 170 *Leptoclinum ianthinum* Sluiter, 1898 b: 38, pl. 2. fig. 5, pl. 5 figs. 11 - 13.
= *Didemnum psamathodes* (Sluiter, 1895) forma *maculatum* Nott, 1892 vide: Kott, 1962: 325.
- Syntypes : ZMA TU 576. Coast of Mozambique, 1894, Coll. M. Weber (only 7 fragm. are in the jar in which 2 col. should be present).
- 171 *Leptoclinum margaritiferae* Herdman, 1906: 337, pl. VIII figs. 19 - 22, pl. IX fig. 7.
= ? *Leptoclinides reticulatus* (Sluiter, 1909) vide: Kott, 1962: 285.
- Holotype : ZMA TU 580. Ceylon, Stat. XIX Palk Bay South of Mandativa, depth 5 fathoms, 1902, Coll. W.A. Herdman (part of the type col. preserved in BMNH Reg. no. 67.8.30.39).
- 172 *Leptoclinum marmoratum* Sluiter, 1909: 84, pl. VIII fig. 9.
- Lectotype : ZMA TU 1277. Siboga Exped. Stat. 164 (l.c.) (the figured and dissected col.).
Paralectotype : ZMA TU 584. Same loc. (1 col.).
- 173 *Leptoclinum multifidum* Sluiter, 1909: 83, pl. IV fig. 11.
- Holotype : ZMA TU 590. Siboga Exped. Stat. 91 (l.c.) (holotype u.s.).
- 174 *Leptoclinum octogesimum* Hartmeyer, 1905: 402, pl. 13 figs. 4 - 5.
- Holotype : ZMA TU 468. Mauritius, Coll. K. Möbius (part of the type col. labeled *Didemnum octogesimum*).
- 175 *Leptoclinum pantherinum* Sluiter, 1895: 172, pl. VIII figs. 1 - 4.
- Holotype : ZMA TU 585. Ambon, Coll. R. Semon (holotype u.s.).
- 176 *Leptoclinum papyraceum* Sluiter, 1909: 75 (See pl. III fig. 3 in this article).
- Syntypes : ZMA TU 583.1. Siboga Exped. Stat. 89 (l.c.) (1 col.).
ZMA TU 583.2. Siboga Exped. Stat. 215 (l.c.) (4 col. dissected).
ZMA TU 583.3. Siboga Exped. Stat. 273 (l.c.) (1 col.).
Topotype : ZMA TU 487. Siboga Exped. Stat. 273 (l.c.) (1 col. to all probability identified by Sluiter, but not used as a type for the description).
- 177 *Leptoclinum perspicuum* Sluiter, 1909: 79 (See pl. III fig. 4 in this article).

- = *Leptoclinum translucidum* Hartmeyer, 1909 vide: Kott, 1962: 306.
Syntypes : ZMA TU 586. Siboga Exped. Stat. 273 (l.c.) (2 col. dissected).
- 178 *Leptoclinum psamathodes* Sluiter, 1895: 171, pl. VII figs. 9 - 11.
= *Didemnum psamathodes* vide: Kott, 1962: 325.
Holotype : ZMA TU 588. Thursday Isl., Torres Strait, Coll. R. Semon (holotype u.s.).
- 179 *Leptoclinum pustulosum* Sluiter, 1895: 173, pl. VIII figs. 12 - 13.
Syntypes : ZMA TU 587. Ambon, Coll. R. Semon (2 col. both dissected).
- 180 *Leptoclinum ramosum* Herdman, 1906: 339, pl. VIII figs. 12 - 14, pl. IX fig. 3.
Holotype : ZMA TU 589. Ceylon, Gulf of Manaar, 1902, Coll. W.A. Herdman (part of the type col. preserved in BMNH Reg. no. 07.8.30.40.).
- 181 *Leptoclinum scidula* Sluiter, 1900a: 19 (See pl. III fig. 5 in this article).
Syntypes : ZMA TU 478. Cook Strait, French Pass and d'Urville Isl., New Zealand, 1896 - 1897, Coll. Dr. H. Schauinsland (3 col. labeled *Didemnum scidula*).
ZMA TU 469. Cook Strait, French Pass, 1896 - 1897, Coll. Dr. H. Schauinsland (2 col. labeled *Didemnum scidula*).
- 182 *Leptoclinum simile* Sluiter, 1909: 77, pl. IV fig. 7.
Syntypes : ZMA TU 591.1. Siboga Exped. Stat. 273 (l.c.) (2 col. dissected).
ZMA TU 591.2. Siboga Exped. Stat. 86, Anchorage off Dongala, Palos Bay, Celebes, depth 36 m, Jan. 18/19, 1900 (many col. of which several dissected).
- 183 *Leptoclinum siphoniatum* Sluiter, 1895: 174, pl. VIII figs. 9 - 10.
= ? *Didemnum psamathodes* (Sluiter, 1895) vide: Kott, 1962: 325.
Holotype : ZMA TU 593. Ambon, Coll. R. Semon (holotype u.s.).
- 184 *Leptoclinum subviridis* Sluiter, 1909: 81, pl. IV fig. 9.
Holotype : ZMA TU 595. Siboga Exped. Stat. 240 (l.c.) (holotype u.s.).
- 185 *Leptoclinum torresii* Sluiter, 1895: 173, pl. VIII figs. 14 - 15.
= *Didemnum torresii* vide: Kott, 1962: 317.
Holotype : ZMA TU 596. Thursday Isl., in the Torres Strait, Coll. R. Semon (holotype u.s.).
- 186 *Leptoclinum varium* Sluiter, 1909: 80 (See pl. III fig. 6 in this article).
Syntypes : ZMA TU 597. Siboga Exped. Stat. 296 (l.c.) (many col.).
ZMA TU 599.1. Siboga Exped. Stat. 37 (l.c.) (many col.).
ZMA TU 599.2. Siboga Exped. Stat. 86 (l.c.) (1 col.).
ZMA TU 599.3. Siboga Exped. Stat. 89 (l.c.) (many col.).
ZMA TU 599.4. Siboga Exped. Stat. 172, Gisser, anchorage between this island and Ceram-laut, depth 18 m, Aug. 26/28, 1899 (numerous col.).
ZMA TU 599.5. Siboga Exped. Stat. 213 (l.c.) (6 col.).
ZMA TU 599.6. Siboga Exped. Stat. 231, Anchorage off Ambon, depth 40 m, Nov. 14/18, 1899 (some col.).
ZMA TU 599.7. Siboga Exped. Stat. 240 (l.c.) (many col.).
ZMA TU 599.8. Siboga Exped. Stat. 279 (l.c.) (1 col.).
ZMA TU 599.9. Siboga Exped. Stat. 282 (l.c.) (3 col.).
- 187 *Leptoclinum verrucosum* Heiden, 1893: 359.
Paratype : ZMA TU 483. Menorca, Mahon, May 24, 1890, Coll. Will (1 col. labeled

Didemnum verrucosum).

- 188 *Leptoclinum viride* Herdman, 1906: 340, pl. VIII figs. 28 - 33.
= *Trididemnum viride* vide: Tokioka, 1957: 87.
Holotype : ZMA TU 598. Ceylon, Stat. XLIX, S. of Periya Paar, depth 13 fathoms, 1902, Coll. W.A. Herdman (part of the type col. preserved in BMNH Reg. no. 07.8.30.41).
- 189 *Lissamaroucium magnum* Sluiter, 1906: 19, pl. I figs. 17 - 18, pl. IV fig. 53.
= *Synoicum adareanum* (Herdman, 1902) vide: Van Name, 1945: 59.
Syntype : ZMA TU 600. Booth Wandel Isl., Antarctica, 1905, Coll. Dr. J. Charcot Exped. Antarct. Française (one dissected col.).
- 190 *Macroclinum diligens* Sluiter, 1915: 51, figs. 16 - 17, 25.
Holotype : ZMA TU 606. Rio d'Oro, N.W. Africa, Coll. F.P. Vermeulen (holotype u.s.).
- 191 *Macroclinum durum* Sluiter, 1915: 56, fig. 20.
Holotype : ZMA TU 607. Senegal, N.W. Africa, Coll. F.P. Vermeulen (holotype u.s.).
- 192 *Macroclinum recedens* Sluiter, 1915: 54, figs. 18 - 19, 26.
Lectotype : ZMA TU 611. Baie de l'Ouest, N.W. Africa, Coll. F.P. Vermeulen (the figured and dissected col.).
Paralectotype : ZMA TU 1284. Same loc. (1 col.).
- 193 *Microcosmus arenaceus* Sluiter, 1904: 53, pl. XI figs. 15 - 18.
Holotype : ZMA TU 635.1. Siboga Exped. Stat. 315 (l.c.) (holotype u.s.).
- 194 *Microcosmus biconvolutus* Sluiter, 1898a: 26, pl. II figs. 36 - 38.
= *Microcosmus exasperatus* Heller, 1878 vide: Van Name, 1945: 34^o.
Holotype : ZMA TU 618. Schottegat, Curaçao, 1896, Coll. J. Versluijs Exped. Yacht Chazalle (holotype u.s.).
- 195 *Microcosmus coalitus* Sluiter, 1898b: 57, pl. 2 fig. 8, pl. 7 figs. 9 - 10.
= *Pyura stolonifera* Heller, 1878 vide: Michaelsen, 1915: 370.
Holotype : ZMA TU 603. Port Nolloth, S.W. coast of Cape Land, 1894, Coll. M. Weber (the col. of "zusammengewachsene Exemplare" is considered to be holotype u.s.).
- 196 *Microcosmus haemisphaerium* Sluiter, 1904: 52, pl. XI figs. 12 - 14.
Syntypes : ZMA TU 635.2. Siboga Exped. Stat. 213 (l.c.) (four specimens and fragm. of the fifth).
- 197 *Microcosmus hirsutus* Sluiter, 1900a: 30, pl. 4 fig. 5, pl. 6 fig. 3.
Holotype : ZMA TU 630. Te One, Red Bluff, Chatham Is., 1896 - 1897, Coll. Dr. H. Schauinsland (only this figured specimen is preserved).
- 198 *Microcosmus miniaceus* Sluiter, 1900a: 31, pl. 4 fig. 4, pl. 6 figs. 5 - 6.
Syntypes : ZMA TU 631. Oahu, Pearl Harbour, 1896 - 1897, Coll. Dr. H. Schauinsland (the two smaller specimens; the larger one is lost).
- 199 *Molgula africana* Sluiter, 1915: 38, figs. 1 - 4.
= *Molgula kophameli* Michaelsen, 1900 vide: Michaelsen, 1915: 367.

- Syntypes : ZMA TU 636. Baie du Levrier, N.W. coast of Africa, Coll. F.D. Vermeulen (10 specimens of which 2 dissected).
- 200 *Molgula calvata* Sluiter, 1904: 116, pl. XIV figs. 7 - 10.
Holotype : ZMA TU 690.1. Siboga Exped. Stat. 213 (l.c.) (holotype u.s.).
- 201 *Molgula conchata* Sluiter, 1898b: 58, pl. 7 figs. 11 - 14.
Syntypes : ZMA TU 637. Knysna, (S. Africa), 1894, Coll. M. Weber (6 specimens of which 2 dissected).
- 202 *Molgula contorta* Sluiter, 1898a: 28, pl. II figs. 39 - 40.
Syntypes : ZMA TU 154. Rio Hacha Goajira, Columbia, depth 6 - 7 m, 1896, Coll. J. Versluijs Exped. Yacht Chazalie (2 specimens).
- 203 *Molgula crinita* Sluiter, 1904: 115, pl. XIII figs. 16 - 18.
Syntypes : ZMA TU 690.2. Siboga Exped. Stat. 314 (l.c.) (2 specimens).
ZMA TU 690.3. Siboga Exped. Stat. 49a (l.c.) (2 specimens).
- 204 *Molgula cynthiaeformis* Hartmeyer, 1903: 163, pl. IV fig. 10, pl. VIII figs. 8 - 12, pl. IX figs. 1 - 4.
Holotype : ZMA TU 639. Tromsø, Coll. M. Weber (holotype u.s.).
- 205 *Molgula flagrifera* Sluiter, 1904: 114, pl. XIV figs. 4 - 6.
Holotype : ZMA TU 690.4. Siboga Exped. Stat. 49a (l.c.) (holotype u.s.).
- 206 *Molgula inversa* Sluiter, 1900a: 32.
Not present in the collection.
- 207 *Molgula longipedata* Sluiter, 1904: 113, pl. XIV figs. 1 - 3.
Syntypes : ZMA TU 690.5. Siboga Exped. Stat. 167, 2° 35'5 S. 131° 26'.2 E, depth 95 m, Aug. 22, 1899 (8 specimens of which 2 dissected).
- 208 *Molgula martensii* Traustedt, 1884: 19, pl. I figs. 6 - 7, pl. II fig. 16.
= *Molgula sabulosa* (Quoy & Gaimard, 1834) vide: Kott, 1952: 299.
Holotype : ZMA TU 686. Mermaid Strait, N.W. Australia, 19° 42' 11" S 116° 49' 8" E, Exped. S.M. Sch. Gazelle 26668 (1 specimen).
The other types of this species are not present in ZMUC, they are neither preserved in the Gymnasium where Traustedt was a lecturer, they have apparently disappeared (Knudsen, in litteris). This implicates that the specimen ZMA 686 is to be considered as holotype.
- 209 *Molgula maxima* Sluiter, 1905b: 471.
= *Molgula pedunculata* Herdman, 1881 vide: Van Name, 1945: 410.
= *Molgula sabulosa* (Quoy & Gaimard, 1834) vide: Kott, 1952: 299.
Paratype : ZMA TU 687. Booth Wandel Isl. (Anvers), Antarctica 1905, Coll. Dr. J. Charcot Exped. Antarct. Française (1 specimen).
The other types are, as syntype series, in MNHN.
- 210 *Molgula sordida* Sluiter, 1904: 118, pl. XIV figs. 11 - 16.
= *Molgula immunda* (Hartmeyer, 1909) vide: Van Name, 1945: 425.
Syntypes : ZMA TU 690.6. Siboga Exped. Stat. 271 (l.c.) (very damaged specimens which do not allow selection of the lectotype).

- 211 *Molgula vitrea* Sluiter, 1904: 119, pl. XIV figs. 17 - 19.
Lectotype : ZMA TU 690.7. Siboga Exped. Stat. 256 (l.c.) (the figured specimen isolated by Sluiter, with the label, in a special tube in the jar).
Paralectotype : ZMA TU 1266. Same loc. (3 specimens).
- 212 *Morchellium intercedens* Sluiter, 1909: 108, pl. V fig. 11.
= *Synoicum intercedens* vide: Van Name, 1918: 59.
Syntypes : ZMA TU 694. Siboga Exped. Stat. 96, South East side of Pearl bank, Sulu Archipelago, depth 15 m, June 27, 1899 (3 col.).
- 213 *Nephtheis centripetus* Sluiter, 1909: 38, pl. II fig. 17, pl. III figs. 1 - 2, pl. VIII fig. 4.
Syntypes : ZMA TU 696.1. Siboga Exped. Stat. 213 (l.c.) (fragments of col.).
ZMA TU 696.2. Siboga Exped. Stat. 258 (l.c.) (2 col.).
ZMA TU 696.3. Siboga Exped. Stat. 273 (l.c.) (19 col.).
ZMA TU 696.4. Siboga Exped. Stat. 7, 7° 55'.5 S 114° 26' E, depth 15 m, March 11, 1899 (2 col.).
ZMA TU 696.5. Siboga Exped. Stat. 149, Fau anchorage and lagune, W. coast of Gebé Isl., depth 31 m, August 10/11, 1899 (25 col.).
ZMA TU 695. Siboga Exped. Stat. 213 (l.c.) (One fragm. separated in formaldehyde is probably the figured col. but this is not certain).
- 214 *Nephtheis faciformis* Sluiter, 1909: 39, pl. III figs. 3 - 4, pl. VII fig. 2.
Lectotype : ZMA TU 1067. Siboga Exped. Stat. 310 (l.c.) (the figured col. labeled *Sycozoa faciformis*).
Paralectotype : ZMA TU 1300. Siboga Exped. Stat. 49a (l.c.) (1 col.).
- 215 *Nephtheis malayensis* Sluiter, 1909: 36, pl. III figs. 8 - 10, pl. VI fig. 11.
Lectotype : ZMA TU 1270. Siboga Exped. Stat. 213 (l.c.) (one of the two figured col.).
Paralectotype : ZMA TU 697. Same loc. (3 col.).
- 216 *Perophora annecteus* Ritter, 1893: 40, pls. I - III.
Paratype : ZMA TU 730. Pacific Grove, July 1892, Coll. W.E. Ritter (1 col.).
- 217 *Perophora viridis* Verrill, 1871: 359.
Paratype : ZMA TU 734. Woods Hole, Mass., Coll. A.E. Verrill (1 col.).
- 218 *Phallusia corelloides* Van Name, 1924: 27, figs. 2 - 4.
= *Ascidia corelloides* vide: Van Name, 1945: 187.
Holotype : ZMA TU 736.1. Caracas Bay, Curaçao, May 5, 1920, Coll. C.J. v.d. Horst.
Paratypes : ZMA TU 736.2. Caracas Bay, Curaçao, May 5, 1920, Coll. C.J. v.d. Horst (1 specimen).
ZMA TU 156. Caracas Bay, Curaçao, from coral, May 13, 1920, Coll. C.J. v.d. Horst (1 dissected specimen).
- 219 *Phallusia julinea* Sluiter, 1919: 7, figs. 13 - 16.
= *Ascidia juliinea* vide: Kott, 1952: 305.
Holotype : ZMA TU 742. Java Sea, Nassi besar Isl., depth 9 fathoms, June 4, 1908, Coll. P.N. van Kampen "Gier Exped." (holotype u.s.).
- 220 *Podoclavella detorta* Sluiter, 1904: 6, pl. III, figs. 18 - 22.
Syntypes : ZMA TU 761.1. Siboga Exped. Stat. 7 (l.c.) (two specimens from a col., both figured).
- 221 *Podoclavella fecunda* Sluiter, 1904: 7, pl. III figs. 23, 24.

= *Clavellina fecunda* vide: Tokioka, 1967: 101.

Lectotype : ZMA TU 761.2. Siboga Exped. Stat. 240 (l.c.) (the figured specimen).
Paralectotype : ZMA TU 1256. Same loc. (4 specimens of which 1 dissected).

222 *Podoclavella molluccensis* Sluiter, 1904: 5 (See pl. IV fig. 1 in this article).
= *Clavellina molluccensis* vide: Tokioka, 1967: 104.

Syntypes : ZMA TU 762. Siboga Exped. Stat. 231 (l.c.) (10 col.).
ZMA TU 763.1. Siboga Exped. Stat. 305, Mid channel in Solor - strait off
Kampong Menanga, depth 113 m, Febr. 8, 1900 (1 specimen).
ZMA TU 763.2. Siboga Exped. Stat. 240 (l.c.) (1 col.).
ZMA TU 763.3. Siboga Exped. Stat. 213 (l.c.) (3 specimens).
ZMA TU 763.4. Siboga Exped. Stat. 310 (l.c.) (1 col.).

223 *Podoclavella procera* Sluiter, 1904: 8, pl. III figs. 14 - 17.

Lectotype : ZMA TU 761.3. Siboga Exped. Stat. 49a (l.c.) (the figured specimen).
Paralectotype : ZMA TU 1257. Same loc. (1 specimen).

224 *Polyandrocarpa robusta* Sluiter, 1919: 6, figs. 9 - 12.

Holotype : ZMA TU 766. Java Sea, near Poeloelaut, 4° 25' S 116° 2' E, depth 15 - 20 fathoms, Dec. 12, 1908, Coll. P.N. van Kampen "Gier Exped." (holotype u.s.).

225 *Polycarpa ehrenbergi* Hartmeyer, 1916: 213, figs. 3 - 5.

Paratype : ZMA TU 775. Red Sea, Coll. Hemprich & Ehrenberg (1 dissected specimen).
The other types are preserved in the MNB Reg. no. 2361.

226 *Polycarpa nigricans* Heller, 1878: 102, pl. IV fig. 23.

Paratypes : ZMA TU 726. Mauritius, Coll. K. Möbius (2 specimens).
The other types are preserved in the MNB Reg. no. 698, one sample with
Reg. no. 703 was lost, probably during World War II.
In the ZMUC one specimen of this paratype series is preserved, journ. no.
26/6-1902, it was send in exchange by R. Hartmeyer in 1902 to Copenhagen.

227 *Polycarpa vankampeni* Sluiter, 1919: 3, figs. 1 - 2.

Lectotype : ZMA TU 793. Java Sea, 5° 44' S 114° 22' E, depth 32 fathoms, Coll. P. N. van
Kampen "Gier Exped." (this specimen was labeled as forma A, and is the
best preserved one).

Paralectotype : ZMA TU 776. Between Riouw and Lingga-Archipelago, 0° 14' N 104° 4' E,
depth 13 - 16 fathoms, Coll. P.N. van Kampen "Gier Exped." (1 specimen
labeled as forma B).

228 *Polycitor amplus* Sluiter, 1909: 21, pl. II fig. 3, pl. VI fig. 4.
= *Eudistoma amplum* vide: Tokioka, 1967: 121.

Syntypes : ZMA TU 781. Siboga Exped. Stat. 37 (l.c.) (the two, small col. of this sample
both resemble the figure but since both were dissected it is impossible to se-
lect the lectotype).
ZMA TU 770. Siboga Exped. Stat. 240 (l.c.) (two col.).

229 *Polycitor arenaceus* Sluiter, 1909: 13, pl. I fig. 11.
= *Eudistoma arenaceus* vide: Kott, 1957: 70.

Holotype : ZMA TU 782. Siboga Exped. Stat. 125 (l.c.) (holotype u.s.).

230 *Polycitor coaltus* Sluiter, 1909: 23, pl. II fig. 4, pl. VI fig. 1.

Holotype : ZMA TU 19. Siboga Exped. Stat. 164 (l.c.) (holotype u.s.).

231 *Polycitor discolor* Sluiter, 1909: 17, pl. I fig. 18.

- = *Eudistoma discolor* vide: Kott, 1957: 71.
- Syntypes : ZMA TU 785.1. Siboga Exped. Stat. 58 (l.c.) (6 col. + fragm.).
ZMA TU 785.2. Siboga Exped. Stat. 99 (l.c.) (2 col.).
ZMA TU 785.3. Siboga Exped. Stat. 273 (l.c.) (1 col.).
- 232 *Polycitor* (*Paradistoma*) *giganteus* Sluiter, 1919: 10, figs. 18 - 20.
= *Diazona gigantea* vide: Van Name, 1945: 156.
= ? *Polycitor giganteum* Herdman, 1899 vide: Kott, 1957: 83.
- Holotype : ZMA TU 885. West Indies, Coll. van de Wege (holotype u.s.).
- 233 *Polycitor gilboviridis* Sluiter, 1909: 6, pl. I figs. 3 - 4, pl. VIII fig. 2.
= *Eudistoma gilboviridis* vide: Kott, 1957: 70.
- Lectotype : ZMA TU 1269. Siboga Exped. Stat. 209 (l.c.) (the part of the substrate figured with the col. figured at the right of fig. 2 (pl. VIII); the other col. do not agree with the figure).
Paralectotype : ZMA TU 788. Same loc. (19 fragm. with col.).
- 234 *Polycitor* (*Eudistoma*) *glabrum* Sluiter, 1919: 9, fig. 17.
- Lectotype : ZMA TU 1281. Java Sea, 6° 37' S 109° 16' E, depth 20 fathoms, Oct. 20, 1907, Coll. P.N. van Kampen "Gier Exped." (the dissected col.).
Paralectotypes: ZMA TU 789. Same loc. (2 col.).
- 235 *Polycitor glaucus* Sluiter, 1909: 12, pl. I fig. 10.
= *Eudistoma glaucus* vide: Kott, 1957: 70.
- Holotype : ZMA TU 790. Siboga Exped. Stat. 312 (l.c.) (holotype u.s.).
- 236 *Polycitor ianthinus* Sluiter, 1909: 20, pl. II fig. 2, pl. VIII fig. 3.
= *Eudistoma ianthinus* vide: Kott, 1957: 69.
- Lectotype : ZMA TU 791. Siboga Exped. Stat. 240 (l.c.) (the figured and dissected col.).
Paralectotype : ZMA TU 792. Siboga Exped. Stat. 234 (l.c.) (1 col. dissected).
- 237 *Polycitor loricatus* Sluiter, 1909: 19, pl. II fig. I, pl. VII fig. 4.
= *Eudistoma loricatus* vide: Kott, 1957: 71.
- Lectotype : ZMA TU 1267. Siboga Exped. Stat. 89 (l.c.) (the only col. resembling one of the two figures; the others are too far dissected).
Paralectotypes: ZMA TU 794.1. Siboga Exped. Stat. 89 (l.c.) (7 col.).
ZMA TU 794.2. Siboga Exped. Stat. 282 (l.c.) (1 col.).
- 238 *Polycitor* (*Eudistoma*) *mayari* Hartmeyer, 1910: 91, pl. I figs. 1 - 6.
= *Eudistoma capsulatum* (Van Name 1902) vide: Van Name, 1945: 118.
- Paratype : ZMA TU 798. Tortugas, S.W. Channel, depth 12 fathoms, 1907, Coll. R. Hartmeyer (1 col.).
- 239 *Polycitor miniaceus* Sluiter, 1909: 8, pl. I figs. 5 - 7, pl. VIII fig. 1.
= *Eudistoma miniaceus* vide: Kott, 1957: 71.
- Lectotype : ZMA TU 799.2. Siboga Exped. Stat. 311 Sapeh Bay, E. coast of Sumbawa, depth 0 - 36 m, Febr. 12/13, 1900 (the figured and largest col.).
Paralectotypes: ZMA TU 799.1. Siboga Exped. Stat. 301 (l.c.) (2 col. of which one dissected).
- 240 *Polycitor mollis* Sluiter, 1909: 11, pl. I fig. 9.
= *Eudistoma mollis* vide: Kott, 1957: 70.
- Holotype : ZMA TU 801. Siboga Exped. Stat. 64 (l.c.) (holotype u.s.).
- 241 *Polycitor multiperforatus* Sluiter, 1909: 24, pl. II fig. 5, pl. VI fig. 6.
= *Eudistoma multiperforata* vide: Kott, 1957: 70.

- Syntypes : ZMA TU 809.1. Siboga Exped. Stat. 209 (l.c.) (7 col. + fragments, two of which are dissected).
ZMA TU 809.2. Siboga Exped. Stat. 91 (l.c.) (1 col. dissected).
- 242 *Polycitor regularis* Sluiter, 1909: 26, pl. II figs. 7 - 11.
= *Eudistoma regularis* vide: Kott, 1957: 70.
- Syntypes : ZMA TU 811. Siboga Exped. Stat. 213 (l.c.) (3 col.).
- 243 *Polycitor scaber* Sluiter, 1909: 25, pl. II fig. 6.
= *Eudistoma scaber* vide: Kott, 1957: 70.
- Holotype : ZMA TU 805. Siboga Exped. Stat. 273 (l.c.) (holotype u.s.).
One other col. from probably the same Siboga Exped. Stat. is in the collection (ZMA TU 531) but though Sluiter identified this col. he did not describe it along with ZMA TU 805.
- 244 *Polycitor segmentatus* Sluiter, 1909: 9, pl. I fig. 8, pl. VI fig. 5.
= *Eudistoma segmentatus* vide: Kott, 1957: 70.
- Lectotype : ZMA TU 1268. Siboga Exped. Stat. 174 (l.c.) (the figured col.).
Paralectotypes: ZMA TU 806.1. Siboga Exped. Stat. 323 Sangkapoera-roads, Bawean Isl., depth 12 m, Febr. 24/25, 1900 (3 fragments of substrate with col.).
ZMA TU 806.2. Siboga Exped. Stat. 174 (l.c.) (5 fragm. of substrate with partly dissected col.).
- 245 *Polycitor signiferus* Sluiter, 1909: 5, pl. I figs. 1, 2, pl. VII fig. 3.
- Syntypes : ZMA TU 808.1. Siboga Exped. Stat. 225c, Anchorage S. of Lucipara Group, depth 646 m, Nov. 8/10, 1899 (1 dissected col.).
ZMA TU 808.2. Siboga Exped. Stat. 240 (l.c.) (1 dissected col.).
- 246 *Polycitor spirifer* Sluiter, 1909: 15, pl. I fig. 17, pl. VI fig. 2.
- Syntypes : ZMA TU 810. Siboga Exped. Stat. 318, 6° 36'.5 S 114° 55'.5 E, depth 88 m, Febr. 22, 1900 (10 col.).
- 247 *Polycitor torosus* Sluiter, 1909: 18, pl. I fig. 19, pl. VI fig. 3.
= *Eudistoma torosus* vide: Kott, 1957: 69.
- Holotype : ZMA TU 812. Siboga Exped. Stat. 303 (l.c.) (holotype u.s.).
- 248 *Polycitor violaceus* Sluiter, 1909: 14, pl. I figs. 12 - 16.
- Syntypes : ZMA TU 814. Siboga Exped. Stat. 131 (l.c.) (3 col. and fragm.).
- 249 *Polyclinum arenosum* Sluiter, 1898b: 20, pl. 4 figs. 1 - 2.
= *Aplidiopsis arenosum* vide: Kott, 1963: 84.
- Holotype : ZMA TU 816. Beach near Isipingo (S. Africa) 1894, Coll. M. Weber (holotype u.s.).
- 250 *Polyclinum circulatum* Sluiter, 1909: 93, pl. IV fig. 17.
- Syntypes : ZMA TU 821. Siboga Exped. Stat. 58 (l.c.) (many col.).
- 251 *Polyclinum crater* Sluiter, 1909: 95, pl. V fig. 2, pl. VI fig. 12.
- Holotype : ZMA TU 822. Siboga Exped. Stat. 311 (l.c.) (holotype u.s.).
- 252 *Polyclinum festum* Hartmeyer, 1905: 400, pl. 13 figs. 6 - 7.
= *Polyclinum constellatum* (Savigny, 1816) vide: Van Name, 1945: 68.
- Paratype : ZMA TU 825. Mauritius, Coll. K. Möbius (1 col.).

- 253 *Polyclinum glabrum* Sluiter, 1895: 168. pl. VI figs. 8 - 12.
Holotype : ZMA TU 824. Ambon, Coll. R. Semon (holotype u.s.).
- 254 *Polyclinum globosum* Sluiter, 1909: 92, pl. IV fig. 16, pl. VIII fig. 10.
= *Aplidiopsis pannosum* (Ritter, 1899) vide: Van Name, 1945: 66.
Holotype : ZMA TU 823. Siboga Exped. Stat. 89 (l.c.) (holotype u.s.).
- 255 *Polyclinum hospitale* Sluiter, 1895: 169, pl. VII figs. 1 - 2.
= ? *Aplidiopsis hospitale* vide: Kott, 1963: 84.
Holotype : ZMA TU 826. Thursday Isl. in the Torres Strait, Coll. R. Semon (holotype u.s.).
- 256 *Polyclinum insulsum* Sluiter, 1898b: 25, pl. 4 fig. 7.
Holotype : ZMA TU 827. Coast of Mozambique, 1894, Coll. M. Weber (holotype u.s.).
- 257- *Polyclinum isipingense* Sluiter, 1898b: 21, pl. 2 fig. 1. pl. 4 fig. 3.
Lectotype : ZMA TU 1289. Beach of Isipingo (S. Africa), 1894, Coll. M. Weber (the figured and intact col.).
Paralectotypes: ZMA TU 828. Same loc. (many fragments).
- 258 *Polyclinum maeandrium* Sluiter, 1915: 48, figs. 14, 24.
Holotype : ZMA TU 886. Senegal, N.W. Africa, Coll. F.P. Vermeulen (holotype u.s.).
- 259 *Polyclinum meridianum* Sluiter, 1900a: 10, pl. 2 fig. 8.
Syntypes : ZMA TU 829. Bare Isl. between Vancouver Isl. and British Columbia, 1896 - 1897, Coll. Dr. H. Schauinsland (2 col.).
- 260 *Polyclinum mikropnous* Sluiter, 1909: 94, pl. V fig. 1.
= *Distalpia stylifera* (Kowalevsky, 1874) vide: Van Name, 1945: 147.
= *Distalpia mikropnous* vide: Tokioka, 1967: 129.
Holotype : ZMA TU 830. Siboga Exped. Stat. 99 (l.c.) (holotype u.s.).
- 261 *Polyclinum pullum* Sluiter, 1898b: 23, pl. 2 fig. 2, pl. 4 figs. 4 - 6.
= *Aplidium pullum* vide: Kott, 1963: 92.
Lectotype : ZMA TU 831. Coast of Mozambique, 1894, Coll. M. Weber (the figured col.).
Paralectotype : ZMA TU 1290. Same loc. (one dissected col.).
- 262 *Polyclinum reticulatum* Sluiter, 1915: 47, figs. 13, 23.
Lectotype : ZMA TU 887. Bale de l'Ouest, N.W. Africa, Coll. F.P. Vermeulen (the figured and dissected specimen).
Paralectotype : ZMA TU 1283. Same loc. (1 specimen).
- 263 *Polyclinum sabulosum* Sluiter, 1909: 96, pl. V fig. 3.
Holotype : ZMA TU 832. Siboga Exped. Stat. 50 (l.c.) (holotype u.s.).
- 264 *Polysyncraton dubium* Sluiter, 1909: 69, pl. IV fig. 3, pl. VII fig. 10.
= *Leptoclinides dubius forma typicus* vide: Kott, 1962: 288.
Lectotype : ZMA TU 1275. Siboga Exped. Stat. 91 (l.c.) (the figured col.).
Paralectotypes: ZMA TU 834.1. Siboga Exped. Stat. 89 (l.c.) (1 col.).
ZMA TU 834.2. Siboga Exped. Stat. 91 (l.c.) (1 col.).
- 265 *Polysyncraton marmoratum* Sluiter, 1909: 71, pl. IV fig. 4, pl. VIII fig. 7.

= *Leptoclinides marmoratus* vide: Kott, 1962: 285.

Syntypes : ZMA TU 837.1. Siboga Exped. Stat. 64 (l.c.) (7 col.).
ZMA TU 837.2. Siboga Exped. Stat. 312 (l.c.) (1 col.).

266 *Polysyncraton nigropunctatum* Sluiter, 1909: 74 (See pl. IV fig. 2 in this article).
= *Leptoclinides nigropunctatum* vide: Kott, 1962: 285.

Syntypes : ZMA TU 838. Siboga Exped. Stat. 37 (l.c.) (5 fragm. of substrate and fragm. of col.).

267 *Polysyncraton ocellatum* Sluiter, 1909: 73, pl. IV fig. 6, pl. VII fig. 11.
= *Leptoclinides ocellatus* vide: Kott, 1962: 285.

Lectotype : ZMA TU 839. Siboga Exped. Stat. 64 (l.c.) (the col. of which part is figured).
Paralectotype : ZMA TU 1276. Same loc. (1 col.).

268 *Polysyncraton rufum* Sluiter, 1909: 72, pl. IV fig. 5.
= *Leptoclinides rufus* vide: Kott, 1962: 286.

Syntypes : ZMA TU 840.1. Siboga Exped. Stat. 40, Anchorage off Pulu Kawassang, Pater-
noster Is., depth 12 m, April 2, 1899 (1 dissected col.).
ZMA TU 840.2. Siboga Exped. Stat. 43 (l.c.) (1 dissected col.).

269 *Psammaplidium ambiguum* Sluiter, 1900a: 12.

Not preserved in the collection.

270 *Psammaplidium aurantiacum* Herdman, 1906: 335, pl. VIII figs. 2 - 6, pl. IX fig. 8.

Holotype : ZMA TU 841. Ceylon, Cheval Paar, Coll. W.A. Herdman, 1902 (part of the
type col. preserved in the BMNH Reg. no. 07.8.30.32).

271 *Psammaplidium ceylonicum* Herdman, 1906: 335, pl. VIII figs. 8 - 11, pl. IX fig. 9.

Syntype : ZMA TU 842. Ceylon, Stat. LIV, in northern part of Gulf of Manaar, south of
Adam's Bridge, depth 4 - 40 fathoms, 1902, Coll. W.A. Herdman (part of col.
preserved in BMNH Reg. no. 07.8.30.33).

272 *Psammaplidium circumvolutum* Sluiter, 1900a: 14, pl. 1 fig. 7, pl. 3 fig. 1.
= *Aplidium circumvolutum* vide: Millar, 1960: 25.

Holotype : ZMA TU 848. Maunganui, Chatham Is. (Pacific), 1896 - 1897, Coll. Dr. H.
Schauinsland (holotype u.s.).

273 *Psammaplidium foliaceum* Sluiter, 1900a: 11 (See pl. IV fig. 3 in this article).
= *Aplidium foliaceum* vide: Kott, 1963: 92.

Holotype : ZMA TU 844. Chatham Is. (Pacific), 1896 - 1897, Coll. Dr. H. Schauinsland
(holotype u.s.).

274 *Psammaplidium funginum* Sluiter, 1898a: 31 (See pl. IV fig. 4 in this article).
= *Amaroucium funginum* vide: Van Name, 1945: 43.

Syntypes : ZMA TU 843. Tortugas Isl., W. Indies, depth 45 m, 1896, Coll. J. Versluijs
Exped. Yacht Chazalle (6 col. with fragments).

275 *Psammaplidium obesum* Sluiter, 1898b: 28, pl. 1 fig. 6, pl. 4 figs. 10 - 11.
= *Aplidium pantherinum* (Sluiter, 1898) vide: Millar, 1962: 123.

Lectotype : ZMA TU 845. Seapoint near Cape Town, 1894, Coll. M. Weber (the figured
col. and fragm. from dissecting).

Paralectotype : ZMA TU 1292. Same loc. (1 col. dissected).

276 *Psammaplidium pantherinum* Sluiter, 1898b: 26, pl. 2 fig. 3, pl. 4 figs. 8 - 9.

= *Aplidium pantherinum* vide: Millar, 1962: 123.

Lectotype : ZMA TU 1291. Beach near Isipingo (S. Africa), 1894, Coll. M. Weber (the figured col.).

Paralectotype : ZMA TU 849. Same loc. (2 dissected col.).

277 *Psammaplidium radiatum* Sluiter, 1906: 25, pl. II figs. 23 - 24, pl. IV fig. 52.

= *Amaroucium radiatum* vide: Van Name, 1945: 46.

= *Aplidium radiatum* vide: Millar, 1960: 37.

Syntype : ZMA TU 851. Carthage Bay, Antarctica, 1905, Coll. Dr. J. Charcot, Exped. Antarct. Française (1 col.) (this col. is not specially mentioned in the description but Sluiter labeled it as "TYPE" so that it can be considered a syntype).

278 *Psammaplidium stelliferum* Sluiter, 1900a: 13.

= *Aplidium stelliferum* vide: Kott, 1963: 92.

Not preserved in the collection.

279 *Psammaplidium triplex* Sluiter, 1906: 23, pl. II figs. 21 - 22, pl. IV fig. 51.

= *Synoicum triplex* vide: Van Name, 1945: 60.

Syntype : ZMA TU 850. Schollaert Channel, Antarctica, 1905, Coll. Dr. J. Charcot Exped. Antarct. Française (1 col.).

280 *Psammostyela delamarei* Weinstein, 1961: 1843 and text fig.

Paratype : ZMA TU 852. Banyuls-sur-Mer, l'anse du Troc, (Pyrénées-Orientales), depth 5 - 20 m, 1961, Coll. F. Weinstein.

281 *Pseudodistoma arborescens* Millar, 1967: 359, figs. a - f.

Holotype : ZMA TU 122.1. Nosi Tanga, Madagascar, on reef, depth 7 - 9 m, Jan. 1, 1964, Coll. J.H. Stock (journ. number MD 56) (1 col.).

Paratypes : ZMA TU 122.2. Same loc. (11 col. or pieces).

282 *Pterygascidia mirabilis* Sluiter, 1904: 21, pl. II fig. 3, pl. VII figs. 1 - 5.

Syntypes : ZMA TU 853. Siboga Exped. Stat. 302, 10° 27'.9 S 123° 28'.7 E, depth 216 m, Febr. 2, 1900 (11 specimens, two more specimens described are thus absent perhaps due to dissecting).

283 *Pyura clavigera* Traustedt, 1883: 117, pl. VI fig. 20.

= *Pyura chilensis* Molina, 1782, vide: Van Name, 1945: 333.

Holotype : ZMA TU 863. Peru, Coll. Winterfeldt (1 col.). The other types of this species are not preserved in ZMUC, they are neither present in the Gymnasium where Traustedt was a lecturer, they have apparently disappeared (Knudsen, in litteris). This implicates that the specimen ZMA 863 is to be considered the holotype.

284 *Rhabdocynthia latisinuosa* Sluiter, 1904: 55, pl. XI figs. 10 - 11.

Holotype : ZMA TU 888. Siboga Exped. Stat. 251 (l.c.) (holotype u.s.).

285 *Rhopalopsis defecta* Sluiter, 1904: 14, pl. III figs. 9 - 11.

Lectotype : ZMA TU 968.1. Siboga Exped. Stat. 240 (l.c.) (the figured col. is selected, it is the only one not completely damaged by dissecting).

Paralectotypes: ZMA TU 968.2. Siboga Exped. Stat. 310 (l.c.) (2 col. dissected).
ZMA TU 1258. Siboga Exped. Stat. 240 (l.c.) (1 col. dissected).

286 *Rhopalopsis tenuis* Sluiter, 1904: 15, pl. III figs. 12 - 13.

Syntypes : ZMA TU 968.14. Siboga Exped. Stat. 320, 6° 5' S 114° 7' E, depth 82 m,

Febr. 23, 1900 (5 specimens).

- 287 *Salpa maxima* Forskål, 1775 var. *tuberculata* Metcalf & Bell, 1918: 87, fig. 72.
Paratype : ZMA TU 936. Albatross Philippine Exped. Stat. D 5200 in the Pamlocan Isl. vicinity western Bohol, April 9, 1908, surface, (2 specimens aggregated) (exchanged with USNM cat. no. 6454).
The holotype is in the USNM cat. no. 6472.
- 288 *Sigillina caerulea* Sluiter, 1909: 31, pl. II figs. 12 - 16.
= ? *Eudistoma cyaneum* (Herdman, 1899) vide: Millar, 1963: 714.
Not preserved in the collection.
- 289 *Stolonica conglutinata* Sluiter, 1915: 43, figs. 8 - 12, 22.
Holotype : ZMA TU 985. Baie d'Oro, N.W. Coast of Africa (Senegal), Coll. F.P. Vermeulen (holotype u.s.).
- 290 *Stolonica duploplicata* Sluiter, 1913: 67, figs. 4 - 10.
= *Amphicarpa duploplicata* vide: Kott, 1964: 132.
Syntypes : ZMA TU 986. Pulu Bambu (Aru Is., Indonesia), depth 10 m, April 3, 1908 (2 col. received in exchange from Dr. H. Merton).
- 291 *Styela albomarginata* Sluiter, 1904: 65, pl. VIII figs. 5 - 8.
= *Polycarpa albomarginata* vide: Kott, 1952: 230.
Lectotype : ZMA TU 992.1. Siboga Exped. Stat. 303 (l.c.) (on this dissected specimen the description and figures are chiefly based).
Paralectotypes: ZMA TU 991. Siboga Exped. Stat. 257 (2 dissected specimens).
- 292 *Styela albopunctata* Sluiter, 1904: 76, pl. IX figs. 15 - 17.
= *Polycarpa albopunctata* vide: Kott, 1952: 229.
Holotype : ZMA TU 976.3. Siboga Exped. Stat. 289, 9° 0'.3 S 126° 24'.5 E, depth 112 m, Jan. 20, 1900 (holotype u.s.).
- 293 *Styela ambonensis* Sluiter, 1904: 83, pl. X fig. 14, 15.
= *Polycarpa ambonensis* vide: Kott, 1952: 229.
Holotype : ZMA TU 976.4. Siboga Exped. Stat. 231 (l.c.) (holotype u.s.).
- 294 *Styela (Polycarpa) anguinea* Sluiter, 1898b: 52, pl. 6 figs. 15 - 19.
= *Polyandrocarpa anguinea* vide: Millar, 1962: 186.
Holotype : ZMA TU 992.2. Knysna (S. Africa), 1894, Coll. M. Weber (the "zusammengewachsene" specimens form the holotype u.s.).
- 295 *Styela (Polycarpa) appropinquata* Sluiter, 1898a: 18, pl. I figs. 19 - 21.
= *Polycarpa obtecta* Traustedt, 1883, vide: Van Name, 1945: 257.
For synonymy see also Sloom, 1969.
Holotype : ZMA TU 1117. Tortugas Isl., 1896, Coll. J. Versluijs Exped. Yacht Chazalie (holotype u.s.).
- 296 *Styela argentata* Sluiter, 1890: 340, fig. 14.
Holotype : ZMA TU 993. Bay of Batavia (= Bay of Djakarta, Indonesia), on coral reef between Leiden Isl. and Enkhuizen Isl., depth 10 fathoms, Coll. C.Ph. Sluiter (journ. no. 699) (holotype u.s.).
- 297 *Styela argillacea* Sluiter, 1900a: 25.
Not preserved in the collection.

- 298 *Styela (Polycarpa) asiphonica* Sluiter, 1898a: 17, pl. I figs. 16 - 18.
= *Polycarpa oblecta* Traustedt, 1883, vide: Kott, 1952: 242.
For synonymy see also Sloom, 1969.
- Syntypes : ZMA TU 1115. Rio Hacha (Goajira), depth 6 - 7 m, 1896, Coll. J. Versluijs Exped. Yacht Chazalie (2 dissected specimens).
- 299 *Styela asymmetrica* Sluiter, 1904: 87, pl. X figs. 25 - 26.
= *Polycarpa assymmetrica* vide: Kott, 1952: 230.
- Lectotype : ZMA TU 976.5. Siboga Exped. Stat. 149 (l.c.) (the largest dissected specimen).
Paralectotype : ZMA TU 1262. Same loc. (1 dissected specimen).
- 300 *Styela aurita* Sluiter, 1890: 338, figs. 12 - 13.
= *Polycarpa aurita* vide: Kott, 1952: 229.
- Lectotype : ZMA TU 1011. Bay of Batavia (= Bay of Djakarta, Indonesia), coral reef between Leiden Isl. and Enkhuizen Isl., depth 10 fathoms, Coll. C.Ph. Sluiter (journ. no. 668) (the figured and dissected specimen).
Paralectotypes: ZMA TU 1255. Same loc. (3 specimens).
- 301 *Styela bicolor* Sluiter, 1887: 262, pl. I fig. 5.
- Holotype : ZMA TU 1013. Bay of Batavia (= Bay of Djakarta, Indonesia), Coll. C.Ph. Sluiter (holotype u.s.).
- 302 *Styela bicornuta* Sluiter, 1900a: 22, pl. 3 figs. 6 - 8, pl. 4 fig. 2.
= *Cnemidocarpa bicornuta* vide: Brewin, 1956: 131.
- Syntypes : ZMA TU 1085. New Zealand, 1896 - 1897, Coll. Dr. H. Schauinsland (1 specimen).
ZMA TU 1086. New Zealand, 1896 - 1897, Coll. Dr. H. Schauinsland (5 specimens).
Both samples are labeled *Tethyum bicornutum* without further reference to the locality than "New Zealand". There had to be 4 fullgrown and 4 juvenile specimens which are probably mixed whereas two are lost.
- 303 *Styela biforis* Sluiter, 1904: 78, pl. X figs. 1 - 4.
- Holotype : ZMA TU 1014. Siboga Exped. Stat. 164 (l.c.) (holotype u.s.).
- 304 *Styela (Polycarpa) brevipedunculata* Sluiter, 1898a: 15, pl. I fig. 12.
= *Polycarpa oblecta* Traustedt, 1883 vide: Kott, 1952: 242.
For synonymy see also Sloom, 1969.
- Holotype : ZMA TU 1118. The lagoon Schottegat, Curaçao, 1896, Coll. J. Versluijs Exped. Yacht Chazalie (holotype u.s.).
- 305 *Styela captiosa* Sluiter, 1885: 202, pl. IX figs. 4 - 7.
= *Polycarpa captiosa* vide: Tokioka, 1967: 171.
- Holotype : ZMA TU 1015. Between Mendanau and Billiton, depth 6 fathoms, Coll. C. Ph. Sluiter (holotype u.s.).
- 306 *Styela (Polycarpa) cartilaginea* Sluiter, 1898a: 16, pl. I figs. 13 - 15.
= *Polycarpa oblecta* Traustedt, 1883 vide: Kott, 1952: 242.
For synonymy see also Sloom, 1969.
- Holotype : ZMA TU 1114. Gairaca, St. Marta, Columbia, 1896, Coll. J. Versluijs Exped. Yacht Chazalie (holotype u.s.).
- 307 *Styela cerea* Sluiter, 1900a: 24, pl. 3 figs. 9 - 11.
= *Astereocarpa cerea* vide: Kott, 1952: 227.
- Holotype : ZMA TU 1087. d'Urville Isl. (New Zealand), 1896 - 1897, Coll. Dr. H.

Schauinsland (though 2 specimens are mentioned only one is preserved and labeled *Thetyum cereum*).

- 308 *Styela circumarata* Sluiter, 1904: 70, pl. I fig. 4, pl. IX fig. 1.
For synonymy see also Sloom, 1969.
Holotype : ZMA TU 1108. Siboga Exped. Stat. 99 (l.c.) (holotype u.s.).
- 309 *Styela contecta* Sluiter, 1904: 66, pl. VIII figs. 9 - 12.
Syntypes : ZMA TU 1019. Siboga Exped. Stat. 240 (l.c.) (6 specimens of which some dissected).
- 310 *Styela cryptocarpa* Sluiter, 1885: 210, pl. II fig. 1, pl. VII figs. 1 - 3.
= *Polycarpa cryptocarpa* vide: Tokioka, 1967: 173.
Lectotype : ZMA TU 1280. Between Mendanau and Billiton, depth 6 fathoms, Coll. C. Ph. Sluiter (this is the figured and best preserved specimen).
Paralectotypes: ZMA TU 1020. Same loc. (3 specimens dissected).
- 311 *Styela cylindrica* Sluiter, 1904: 88, pl. XI figs. 19 - 21.
Holotype : ZMA TU 976.10. Siboga Exped. Stat. 315 (l.c.) (holotype u.s.).
- 312 *Styela flexibilis* Sluiter, 1905b: 472.
= *Cnemidocarpa verrucosa* (Lesson, 1830) vide: Van Name, 1945: 272.
Paratype : ZMA TU 1022. Port Carthage, Booth Wandel Isl., Antarctica, 1905, Coll. Dr. J. Charcot Exped. Antarct. Française (1 specimen) (the other types are in MNHN).
- 313 *Styela floccosa* Sluiter, 1904: 64, pl. VIII figs. 2 - 4.
Lectotype : ZMA TU 976.13. Siboga Exped. Stat. 258 (l.c.) (the figured specimen).
Paralectotype : ZMA TU 1260. Same loc. (1 specimen dissected).
- 314 *Styela (Polycarpa) friabilis* Sluiter, 1898a: 13, pl. I fig. 11.
= *Polycarpa obtecta* Traustedt, 1883 vide: Kott, 1952: 242.
For synonymy see also Sloom, 1969.
Holotype : ZMA TU 1113. Kingston, Jamaica, 1896, Coll. J. Versluijs Exped. Yacht Chazalie (holotype u.s.).
- 315 *Styela (Polycarpa) fuliginea* Sluiter, 1898a: 12, pl. I fig. 10, pl. III fig. 45.
= *Polycarpa obtecta* Traustedt, 1883 vide: Kott, 1952: 242.
For synonymy see also Sloom, 1969.
Holotype : ZMA TU 1111. Tortugas Isl., W. Indies, depth 45 m, 1896, Coll. J. Versluijs Exped. Yacht Chazalie (holotype u.s.) (In this sample 2 specimens labeled *Pyura vittata* were found, not described by Sluiter, probably these have later been considered identical with the present species).
- 316 *Styela glebosa* Sluiter, 1904: 85, pl. X figs. 20 - 22.
Lectotype : ZMA TU 976.14. Siboga Exped. Stat. 81 (l.c.) (this specimen is the only one examined interiorly by Sluiter).
Paralectotype : ZMA TU 1261. Same loc. (1 specimen).
- 317 *Styela grahami* Sluiter, 1905b: 473.
Paratype : ZMA TU 1023. Booth Wandel Isl., Antarctica, 1905, Coll. Dr. J. Charcot Exped. Antarct. Française (1 specimen).
The other types are in MNHN. Sluiter (1911) considered two specimens of the original type series to belong to his new species *Tethyum (Styela) wana-*

deli; of these two specimens one is in MNHN and one is sent by Sluiter to the "Musée de Berlin" but it could not be traced whether the specimen is still present there.

- 318 *Styela herdmanni* Sluiter, 1885: 205, pl. I fig. 11, pl. VI figs. 5 - 11.
= *Polycarpa herdmanni* vide: Kott, 1952: 229.
- Holotype : ZMA TU 1025. Between Mendanau and Billiton, depth 6 fathoms, Coll. C.Ph. Sluiter (the figured and dissected specimen). (The second specimen which should be present according to the description by Sluiter is not preserved in the collection of ZMA).
- 319 *Styela incubita* Sluiter, 1904: 75, pl. II fig. 7, pl. IX figs. 11 - 14.
= *Cnemidocarpa incubita* vide: Tokioka, 1967: 186.
- Holotype : ZMA TU 976.15. Siboga Exped. Stat. 282 (l.c.) (holotype u.s.).
- 320 *Styela (Polycarpa) insulsa* Sluiter, 1898a: 14, pl. III fig. 43.
= *Polycarpa obtecta* Traustedt, 1883 vide: Kott, 1952: 242.
For synonymy see also Sloom, 1969.
- Lectotype : ZMA TU 1297. Gairaca, Santa Marta, Columbia, 1896, Coll. J. Versluijs Exped. Yacht Chazalie (the figured specimen).
(This loc. is given on the label; in the description Los Testigos is given which may be a lapsus).
- Paralectotype : ZMA TU 1112. Same loc. (1 dissected specimen).
- 321 *Styela maeandria* Sluiter, 1904: 77, pl. IX figs. 18 - 20.
- Holotype : ZMA TU 976.16. Siboga Exped. Stat. 49a (l.c.) (holotype u.s.).
- 322 *Styela (Polycarpa) natalensis* Sluiter, 1898b: 50, pl. 6 figs. 11 - 14.
= *Polycarpa natalensis* vide: Michaelsen, 1918: 37.
- Lectotype : ZMA TU 1295. Durban, 1894, Coll. M. Weber (the dissected specimen).
Paralectotypes: ZMA TU 1030. Same loc. (36 specimens).
- 323 *Styela nisiotis* Sluiter, 1900a: 21, pl. 3 figs. 2 - 5.
= *Cnemidocarpa nisiotis* vide: Brewin, 1956: 131.
- Syntypes : ZMA TU 1090. New Zealand, 1896 - 1897, Coll. Dr. H. Schauinsland (6 specimens).
ZMA TU 1091. New Zealand, "von Sumner", 1896 - 1897, Coll. Dr. H. Schauinsland (2 specimens). (These two specimens are not mentioned in the description. Although identified by Sluiter and labeled *Tethyum nisiotis*, they can hardly be considered types. This sample and ZMA TU 1090 were both at the same time at the disposal of the author).
- 324 *Styela (Polycarpa) nivosa* Sluiter, 1898a: 12, pl. I fig. 9, pl. III fig. 46.
= *Polycarpa obtecta* Traustedt, 1883 vide: Kott, 1952: 242.
For synonymy see also Sloom, 1969.
- Syntypes : ZMA TU 1116. Gairaca, Santa Marta, Columbia, depth 30 m, Coll. J. Versluijs Exped. Yacht Chazalie (the three specimens are dissected and the fragments are mixed, so that individual specimens are not recognizable).
- 325 *Styela nutrix* Sluiter, 1904: 86, pl. X figs. 23 - 24.
- Syntypes : ZMA TU 976.18. Siboga Exped. Stat. 303 (l.c.) (2 specimens).
ZMA TU 976.19. Siboga Exped. Stat. 213 (l.c.) (2 specimens).
- 326 *Styela oligocarpa* Sluiter, 1885: 187, pl. I fig. 7, pl. IV figs. 12 - 15.
- Syntypes : ZMA TU 1032. Between Mendanau and Billiton, depth 6 fathoms, Coll. C.Ph. Sluiter (the two specimens are dissected and the fragm. are mixed).

- 327 *Styela olitoria* Sluiter, 1890: 341, fig. 15.
= *Polycarpa olitoria* vide: Kott, 1952: 229.
Holotype : ZMA TU 1034. Bay of Batavia (= Bay of Djakarta, Indonesia), on coral reef between Leiden Isl. and Enkhuizen Isl., depth 10 fathoms, Coll. C.Ph. Sluiter (journ. no. 670) (holotype u.s.).
- 328 *Styela orbicularis* Sluiter, 1904: 71, pl. I fig. 5, pl. IX figs. 2, 3.
= ? *Styela tholiformis* (Sluiter, 1912) vide: Van Name, 1945: 306.
Lectotype : ZMA TU 976.22. Siboga Exped. Stat. 316, 7° 19'.4 S 116° 49'.5 E, depth 538 m, Febr. 19, 1900 (figured and dissected specimen).
Paralectotype : ZMA TU 976.21. Siboga Exped. Stat. 314 (l.c.) (1 specimen).
- 329 *Styela (Polycarpa) palinorsa* Sluiter, 1895: 181, pl. IX fig. 14.
Holotype : ZMA TU 1036. Ambon, Coll. R. Semon (holotype u.s.).
- 330 *Styela papillata* Sluiter, 1885: 192, pl. I fig. 8, pl. V figs. 1 - 4.
= *Polycarpa papillata* vide: Kott, 1952: 230.
Lectotype : ZMA TU 1035. Between Mendanau and Billiton, depth 4 fathoms, Coll. C.Ph. Sluiter (the figured and dissected specimen).
Paralectotype : ZMA TU 1279. Same loc. (1 specimen).
- 331 *Styela patens* Sluiter, 1885: 190, pl. IX figs. 1 - 3.
= *Polycarpa patens* vide: Kott, 1952: 230.
Holotype : ZMA TU 1042. Between Mendanau and Billiton, depth 6 fathoms, Coll. C.Ph. Sluiter (holotype u.s.).
- 332 *Styela perforata* Sluiter, 1890: 334, figs. 2 - 4.
Holotype : ZMA TU 1043. Bay of Batavia (= Bay of Djakarta, Indonesia), coral reef "Vader Smit", Coll. C.Ph. Sluiter (journ. no. 664) (holotype u.s.).
- 333 *Styela (Polycarpa) phaula* Sluiter, 1895: 182, pl. IX figs. 12 - 13.
= *Polycarpa phaula* vide: Kott, 1952: 229.
Holotype : ZMA TU 1044. Thursday Isl. in the Torres Strait, Coll. R. Semon (holotype u.s.).
- 334 *Styela (Polycarpa) pneumonodes* Sluiter, 1895: 179, pl. X figs. 1 - 3.
= *Polycarpa aurata* (Quoy & Gaimard, 1834) vide: Tokioka, 1967: 169.
Syntypes : ZMA TU 1046. Ambon, Coll. R. Semon (3 dissected specimens, no individual specimens are recognizable).
- 335 *Styela procera* Sluiter, 1885: 196, pl. I fig. 9, pl. V figs. 5 - 9.
= *Polycarpa procera* vide: Kott, 1952: 229.
Holotype : ZMA TU 1047. Between Mendanau and Billiton, depth 6 fathoms, Coll. C.Ph. Sluiter (holotype u.s.).
- 336 *Styela profunda* Sluiter, 1904: 81, pl. X figs. 10 - 13.
Holotype : ZMA TU 976.28. Siboga Exped. Stat. 52, 9° 3'.4 S 119° 56'.7 E, depth 959 m, April 20, 1899 (holotype u.s.).
- 337 *Styela psammodes* Sluiter, 1904: 84, pl. X figs. 16 - 19.
Lectotype : ZMA TU 976.29. Siboga Exped. Stat. 240 (l.c.) (on this specimen the description is chiefly based).
Paralectotypes: ZMA TU 1263. Same loc. (2 specimens).

- 338 *Styela psoloessa* Sluiter, 1890: 337, figs. 10 - 11.
= *Polycarpa aurata* (Quoy & Gaimard, 1834) vide: Tokioka, 1967: 169.
Syntypes : ZMA TU 1048. Ambon, Coll. Bressler (journ.no.667) (2 dissected specimens).
- 339 *Styela pustulosa* Sluiter, 1904: 80, pl. X figs. 6 - 9.
= *Polycarpa pustulosa* vide: Kott, 1952: 230.
Holotype : ZMA TU 1049. Siboga Exped. Stat. 49a (l.c.) (holotype u.s.).
- 340 *Styela reducta* Sluiter, 1904: 72, pl. IX figs. 4 - 6.
= *Polycarpa reducta* vide: Kott, 1952: 229.
Syntypes : ZMA TU 1050. Siboga Exped. Stat. 310 (l.c.) (many specimens originating from probably 2 col.).
- 341 *Styela reniformis* Sluiter, 1904: 67, pl. VIII figs. 13 - 16.
= *Polycarpa reniformis* vide: Kott, 1952: 231.
Holotype : ZMA TU 976.30. Siboga Exped. Stat. 37 (l.c.) (holotype u.s.).
- 342 *Styela robusta* Sluiter, 1904: 79, pl. X fig. 5.
Holotype : ZMA TU 1052. Siboga Exped. Stat. 115, East side of Pajung Isl., Kwandang Bay, reef exploration, July 9/11, 1899 (holotype u.s.).
- 343 *Styela (Polycarpa) rubida* Sluiter, 1898b: 53, pl. 7 figs. 1 - 4.
= *Polycarpa rubida* vide: Millar, 1962: 186.
Holotype : ZMA TU 1053. Coast of Mozambique, 1894, Coll. M. Weber (holotype u.s.).
- 344 *Styela sedata* Sluiter, 1904: 74, pl. IX figs. 7 - 10.
Holotype : ZMA TU 976.31. Siboga Exped. Stat. 282 (l.c.) (holotype u.s.).
- 345 *Styela (Polycarpa) seminuda* Sluiter, 1898b: 19, pl. II figs. 22 - 23.
= *Polycarpa obtecta* Traustedt, 1883 vide: Kott, 1952: 242.
For synonymy see also Sloom, 1969.
Holotype : ZMA TU 1119. Tortugas Isl., W. Indies, depth 45 m, 1896, Coll. J. Versluijs Exped. Yacht Chazalie (holotype u.s.).
- 346 *Styela sobria* Sluiter, 1904: 63, pl. VIII fig. 1.
Syntypes : ZMA TU 976.32. Siboga Exped. Stat. 213 (l.c.) (2 specimens).
- 347 *Styela solvens* Sluiter, 1895: 182, pl. X figs. 4 - 7.
= *Polycarpa solvens* vide: Kott, 1952: 231.
Syntypes : ZMA TU 1060. Ambon, Coll. R. Semon (3 dissected specimens, the fragments are mixed).
- 348 *Styela spiralis* Sluiter, 1885: 214, pl. II fig. 2, pl. VII figs. 4 - 10.
= *Polycarpa spiralis* vide: Kott, 1952: 230.
Syntypes : ZMA TU 1061. Between Mendanau and Billiton, depth 3 fathoms, Coll. C.Ph. Sluiter (3 specimens and fragments of probably a fourth one).
- 349 *Styela thelyphanes* Sluiter, 1904: 68, pl. VIII figs. 17 - 19.
= *Polycarpa thelyphanes* vide: Kott, 1952: 238.
Holotype : ZMA TU 976.33. Siboga Exped. Stat. 104 (l.c.) (holotype u.s.).
- 350 *Styela traustedti* Sluiter, 1890: 336, figs. 5 - 7.

- Holotype : ZMA TU 1062. Bay of Batavia (=Bay of Djakarta, Indonesia), depth 10 fathoms, Coll. C.Ph. Sluiter (journ. no. 665) (holotype u.s.).
- 351 *Styela truncatum* Ritter, 1901: 241, pl. XXVII figs. 22 - 23.
Paratype : ZMA TU 1093. Yakutat Bay, Alaska, Harriman Alaska Exped. June 21, 1899 (1 specimen).
- 352 *Styela yakutatense* Ritter, 1901: 239, pl. XXVII figs. 20 - 21.
Paratype : ZMA TU 1094. Yakutat Bay, Alaska, Harriman Alaska Exped. June 21, 1899 (1 specimen).
- 353 *Styeloides abbranchiata* Sluiter, 1885: 219, pl. II fig. 3, pl. VIII figs. 1 - 8.
Holotype : ZMA TU 990. Between Mendanau and Billiton, depth 6 fathoms, Coll. C.Ph. Sluiter (holotype u.s.; labeled *Styela abbranchiata*).
- 354 *Styelopsis scaevola* Sluiter, 1904: 89, pl. VIII figs. 10 - 15.
= *Skaiostyela scaevola* vide: Huus et al., 1940: 676.
Holotype : ZMA TU 1066. Siboga Exped. Stat. 164 (l.c.) (holotype u.s.).
- 355 *Sycozoa sedens* Sluiter, 1909: 34, pl. III figs. 5 - 7, pl. VII fig. 1.
Syntypes : ZMA TU 1071. Siboga Exped. Stat. 43 (l.c.) (many colonies on a substratum similar to that on which the figured coll. had grown).
ZMA TU 1072.1. Siboga Exped. Stat. 58 (l.c.) (some col.).
ZMA TU 1072.2. Siboga Exped. Stat. 93 (l.c.) (3 col.).
ZMA TU 1072.3. Siboga Exped. Stat. 129 (l.c.) (some col.).
ZMA TU 1072.4. Siboga Exped. Stat. 193 (l.c.) (2 col.).
ZMA TU 1072.5. Siboga Exped. Stat. 225c (l.c.) (some col.).
ZMA TU 1072.6. Siboga Exped. Stat. 209 (l.c.) (some col.).
ZMA TU 1072.7. Siboga Exped. Stat. 313 (l.c.) (some col.).
- 356 *Synoicum steineni* Michaelsen, 1907: 33, pl. I figs. 4 - 5, pl. III figs. 21 - 24.
= ? *Synoicum adareanum* (Herdman, 1902) vide: Van Name, 1945: 59.
Paratype : ZMA TU 1078. South Georgia, Coll. von der Steinen.
- 357 *Synstyela michaelsoni* Sluiter, 1900b: 110 (See pl. IV fig. 5 in this article).
= *Chorizocarpa elegans* (Quoy & Gaimard, 1834) vide: Michaelsen, 1915: 413.
Holotype : ZMA TU 1081. Thursday Isl., Torres Strait, Coll. R. Semon (holotype u.s.; labeled *Synstyela incrustans* Herdm.).
- 358 *Synstyela monocarpa* Sluiter, 1898b: 55, pl. 1 fig. 12, pl. 7 figs. 5 - 8.
= *Chorizocarpa elegans* (Quoy & Gaimard, 1834) vide: Michaelsen, 1915: 413.
Lectotype : ZMA TU 1296. Seapoint near Cape Town, 1894, Coll. M. Weber (the figured col.).
Paralectotypes: ZMA TU 977. Same loc. (10 fragm. of substrate with col.).
- 359 *Trididemnum granosum* Sluiter, 1909: 41, pl. III fig. 11, pl. VII figs. 5 - 6.
Syntypes : ZMA TU 1096.1. Siboga Exped. Stat. 78 (l.c.) (many col.).
ZMA TU 1096.2. Siboga Exped. Stat. 93 (l.c.) (many col.).
ZMA TU 1096.3. Siboga Exped. Stat. 220, Anchorage off Pasir Pandjang W. coast of Binongka, depth 278 m, Nov. 1/3, 1899 (many col., the col. figured in fig. 6 is certainly from this sample).
- 360 *Trididemnum planum* Sluiter, 1909: 42, pl. III fig. 12, pl. VII fig. 7.
= ? *Trididemnum cyclops* Michaelsen, 1921 vide: Tokioka, 1967: 85.
= ? *Trididemnum natalense* Michaelsen, 1920 vide: Kott, 1962: 278.

Lectotype : ZMA TU 1273. Siboga Exped. Stat. 91 (l.c.) (the figured col.).
 Paralectotypes: ZMA TU 1098. Same loc. (18 col. and fragm.).
 The col. from Stat. 89 are absent.

Table IV
 Generic names mentioned as synonymes or manuscript names in table III

Alloeocarpa	:	134, 135
Amaroucium	:	18, 274, 277
Amphicarpa	:	290
Aplidiopsis	:	249, 254, 255
Aplidium	:	3, 4, 8 - 10, 13, 14, 261, 272, 273, 275 - 278
Archidistoma	:	132
Astereocarpa	:	307
Ascidia	:	218, 219
Chorizocarpa	:	54, 154, 357, 358
Clavellina	:	221, 222
Cnemidocarpa	:	302, 312, 319, 323
Cynthia	:	158
Cystodytes	:	78 - 80
Dendrodoa	:	81, 82
Diandrocarpa	:	150 - 153
Diazona	:	232
Didemnum	:	85, 162, 166, 167, 170, 174, 178, 181, 183, 185, 187
Distalpia	:	161, 260
Eudistoma	:	57, 123, 125, 128, 129, 130, 133, 228, 229, 231, 233 - 244, 247, 288
Eusynstyela	:	148
Herdmania	:	71
Hypodistoma	:	126
Leptoclinides	:	87, 107, 171, 264 - 268
Leptoclinum	:	7, 109, 115
Lissoclinum	:	116 - 121
Oxycorynia	:	135
Polyandrocarpa	:	148, 149, 294
Polycarpa	:	291 - 295, 288 - 300, 304 - 306, 310, 314, 315, 318, 320, 322, 324, 327 329, 330, 331, 333 - 335, 338 - 341, 343, 345, 347 - 349
Polycitor	:	57, 125, 127, 129, 131, 132, 136, 232
Polyclinum	:	147
Polysyncraton	:	108
Pyura	:	67 - 70, 72 - 76, 156, 157, 195, 283, 315
Rhabdocynthia	:	71
Rhopalaea	:	55
Rhopalopsis	:	87
Skaiostyela	:	354
Styela	:	353
Sycozoa	:	58, 214
Symplegma	:	83
Synoicum	:	189, 212, 279
Tethyum	:	302, 307, 317, 323
Trididemnum	:	86, 188

LITERATURE

- BANCROFT, F.W., 1899. Ovogenesis in *Distalpia occidentalis* Ritter (ms), with remarks on other species.- Bull. Mus.comp.Zool.Harv., 35 (4): 59 - 112, pls. 1 - 6.
- BREWING, B.L., 1956. Ascidiens from the Chatham Islands and the Chatham Rise.- Trans.Roy. Soc.New Zealand, 84 (1): 121 - 137, figs. 1 - 4.
- HARTMEYER, R., 1903. Die Ascidiens der Arktis.- In: F. RÖMER & F. SCHAUDINN, Fauna Arctica, 3 (1904) (2): 93 - 412, pls. IV - XIV.
- , 1905. Ascidiens von Mauritius.- Zool.Jahrb., Suppl. 8: 383 - 406, pl. 13.
- , 1910. Polycitor (*Eudistoma*) *mayeri* nov.spec. from Tortugas.- Publ.Carnegie Inst.Washington, 132: 89 - 93, pl. I.
- , 1913. Tunicata. In: Zoologische und Anthropologische Ergebn.einer Forschungsreise im Westl.und Zentr.Süd Afrika.....Dr. Leonhard Schultze, 5 (2): 82 - 98, 128 - 144, pls. VII - VIII, figs. 1 - 6.
- , 1916. Neue und alte Styeliden aus der Sammlung des Berliner Museums.- Mitt.zool.Mus.Berlin, 8: 203 - 230, figs. 1 - 13.
- HEIDEN, H., 1893. Ascidiens aggregatae und Ascidiens compositae von der Insel Menorca.- Zool. Jahrb. (Syst.), 7 (3): 341 - 364, pl. 13.
- HELLER, C., 1878. Beiträge zur nähern Kenntniss der Tunicaten.- Sitz.ber.kön.Akad.Wiss.Wien (Math. Naturw.), 77 (1): 83 - 110, pls. I - VI.
- HERDMAN, W.A., 1899. Descriptive catalogue of the Tunicata in the Australian Museum, Sydney N.S.W.: i - xviii, 1 - 139, pl. A - Bot III, (T. Dobb & Co., Liverpool).
- , 1906. Report on the Tunicata collected by Professor Herdman at Ceylon in 1902.- Rep.Ceylon Pearl Oyster Fish., Suppl.Rep. 39: 295 - 348, pls. I - IX.
- HUUS, J., I.E.W. IHLE, H. LOBMANN & G. NEUMANN, 1940. Handbuch der Zoologie, 5 (2), 6 & 7: 545 - 768, figs. 454 - 581, (Berlin).
- KOTT, P., 1952. The ascidiens of Australia I: Stolidobranchiata Lahille and Phlebobranchiata Lahille.- Austr. Journ.mar.Freshw.Res., 3: 205 - 336, figs. 1 - 183.
- , 1957. The ascidiens of Australia II: Aplousobranchiata Lahille: Clavelinidae Forbes & Hanley and Polyclinidae Verrill.- Austr.Journ.mar.Freshw.Res., 8: 64 - 110, figs. 1 - 31.
- , 1962. The ascidiens of Australia III: Aplousobranchiata Lahille: Didemnidae Giard.- Austr.Journ.mar.Freshw.Res., 13 (3): 265 - 334, figs. 1 - 46.
- , 1963. The ascidiens of Australia IV: Aplousobranchiata Lahille: Polyclinidae Verrill (continued).- Austr. Journ.mar.Freshw.Res., 14 (1): 70 - 118, figs. 1 - 27.
- , 1964. Stolidobranch and phlebobranch ascidiens of the Queensland Coast.- Univ. Queensland Pap.Dept. Zool., 2 (7): 127 - 152, tables 1 - 2, figs. 1 - 8.
- METCALF, M.M., 1900. Notes on the morphology of the Tunicata.- Zool.Jahrb.(Anat.), 13 (4): 495 - 602, figs. A - K, pls. 34 - 40.
- METCALF, M.M. & M.M. BELL, 1918. Contributions to the biology of the Philippine Archipelago and adjacent regions. The Salpidae: a taxonomic study.- Bull. Smiths. Inst. Wash., 100, 2 (2): 1 - 193, pls. 1 - 13.
- MICHAELSEN, W., 1904. Revision der compositen Styeliden oder Polyzoinen.- Jahrb.wiss.Anst.Hamburg, 21 Suppl., (2): 1 - 124, 1 text-fig. pls. 1 - 2, 1 map.
- , 1907. Tunicaten. In: Ergebnisse der Hamburger Magelhaensischen Sammelreise 1892 - 1893, 1: 1 - 84, pls. 1 - 3.
- , 1915. Tunicata. In: Beiträge zur Kenntnis der Meeresfauna Westafrikas: 321 - 518, figs. 1 - 4, pls. XVI - XIX.
- , 1918. Die Ptychobranchen und Diktyobranchen Ascidiens des westlichen Indischen Ozeans.- 2. Beiheft Jahrb.Hamb.wiss.Anst. 35 (1917), Mitt.zool.Mus.Hamburg: 1 - 74, figs. 1 - 9, 1 pl.
- MILLAR, R.H., 1960. Ascidiaceae.- Discovery Rep., 30: 1 - 160, pls. I - VI, textfigs. 1 - 72.
- , 1962. Further descriptions of South Africa ascidiens.- Ann.S.Afr.Mus., 56 (7): 113 - 221, figs. 1 - 45.
- , 1963. Australian ascidiens in the British Museum Natural History.- Proc.zool.Soc.London, 141 (4): 689 - 796, figs. 1 - 45.
- , 1967. A new ascidian of the genus *Pseudodistoma* from Madagascar.- Journ.nat.Hist., 1: 359 - 361, figs. a - f.
- MONNIOT, C. & F. MONNIOT, 1961. Recherches sur les Ascidiens interstitielles des gravelles à Amphioxus (2^e note) - Vie Milieu, 12: 269 - 283, figs. 1 - 4, pls. I - III.
- RITTER, W.E., 1893. Tunicata of the Pacific Coast of North America I: *Perophora annectens* n.sp.- Proc.Calif. Acad.Sci., (2) 4: 37 - 85, pls. I - III.
- , 1899. A contribution to the knowledge of the tunicates of the Probilof Islands.- The Fur Seals and Fur Seal Islands of the North Pacific Ocean, Wash., 3: 511 - 537, pl. LXXXVI.
- , 1901. Papers from the Harriman Alaska Expedition XXIII: The ascidiens.- Proc.Wash.Acad. Sci., 3: 225 - 266, pls. XXVII - XXX.
- , 1909. *Halocynthia johnsoni* n.sp. a comprehensive inquiry as to the extent of law and order that prevails in a single animal species.- Contr.Lab.mar.biol.Ass. San Diego, 26; Univ. California Publ.Zool., 6 (4): 65 - 114, pls. 7 - 14.
- SLOOT, C.J. VAN DER, 1969. Ascidiens of the family Styelidae from the Caribbean.- Studies Fauna Curaçao.- In the press.
- SLUITER, C.P.H., 1885. Ueber einige einfachen Ascidiens von der Insel Billiton.- Natuurk.Tijdschr. Ned. Indië, 45: 160 - 232, pls. I - IX.
- , 1887. Einfache Ascidiens aus der Bai von Batavia.- Natuurk.Tijdschr. Ned. Indië, 46: 242 - 266, pls.

- I - III.
- , 1890. Die Evertbraten aus der Sammlung des königlichen naturwissenschaftlichen Vereins in Niederländisch Indien in Batavia.- Natuurk.Tijdschr. Ned. Indië, 50 : 329 - 350, figs. 1 - 23.
- , 1895. Tunicaten und Nachtrag zu den Tunicaten.- In: R. SEMON, Zoologische Forschungsreisen in Australien und den malayischen Archipel.- Denkschr.Gesellsch.Jena, 8 : 163 - 186 & 325 - 326, pls. VI - X & XXII.
- , 1898 a. Tuniciers recueillis en 1896 par la Chazalie dans la mer des Antilles.- Mem.Soc.zool.France, 11 : 5 - 34, pls. I - III.
- , 1898 b. Beiträge zur Kenntnis der Fauna von Süd-Afrika.- Ergebnisse einer Reise von Professor Max Weber im Jahre 1894 II: Tunicaten von Süd-Afrika.- Zool.Jahrb. (Syst.), 11 : 1 - 64, pls. 1 - 7.
- , 1900 a. Tunicaten aus dem Stillen Ocean.- Ergebnisse einer Reise nach dem Pacific (Schauinsland 1896 - 1897). Zool.Jahrb. (Syst.), 13 (1) : 1 - 35, pls. 1 - 6.
- , 1900 b. Berichtigung über eine Synstyela - Art.- Zool.Anz., 23 (608) : 110.
- , 1904. Die Tunicaten der Siboga Expedition I Abt. : Die socialen und holosomen Ascidien.- Siboga Monogr., 56 a : 1 - 126, pls. I - XV.
- , 1905 a. Tuniciers recueillis en 1904 par M.CH. Gravier dans le Golfe de Tadjourah (Somalie Française).- Mém.Soc.zool.France, 18 : 5 - 21, pls. I - II.
- , 1905 b. Note préliminaire sur les Ascidien Holosomates de l'Expédition Antarctique Française commandée par le Dr. Charcot.- Bull.Mus.Hist.nat., 6 : 470 - 474.
- , 1905 c. Zwei merkwürdige Ascidien von der Siboga Expedition.- Tijdschr. Ned. dierk. Ver., 9 (2) : 325 - 227, figs. 1 - 2.
- , 1905 d. Die Tunicaten der Siboga Expedition.- Suppl. zu der I Abt. : Die socialen und holosomen Ascidien. Siboga Monogr., 56 a : 130 - 139, pl. XVI.
- , 1906. Tuniciers.- In: Expedition Antarctique Française (1903 - 1905) commandée par le Dr. Jean Charcot, 1 - 50, pls. I - V.
- , 1909. Die Tunicata der Siboga Expedition II Abt. : Die merosomen Ascidien.- Siboga Monogr., 56 b : 1 - 112, pls. I - VIII.
- , 1911. Une nouvelle espèce de Tethyum (Styela) provenant de l'Expédition Antarctique Française (1903 - 1905) commandée par le Dr. J. Charcot.- Bull.Mus.Hist.nat., 17 : 37 - 38.
- , 1913. Ascidien von den Aru Inseln.- In: H. MERTON, Ergebnisse einer Forschungsreise in den süd-östlichen Molukken III, Abh. Senckenb.naturforsch.Gesellsch., 35 (1) : 65 - 78, pls. V - VI.
- , 1915. Einige neue Ascidien von der Westküste Afrika's.- Tijdschr. Ned. dierk. Ver., (2) 14 (1) : 37 - 57, figs. 1 - 26.
- , 1919. Ueber einige alte und neue Ascidien aus dem Zoologischen Museum von Amsterdam.- Bijdr. Dierk., 21 : 1 - 12, pl. I.
- , 1927. Les Ascidies de la côte Atlantique du Maroc.- Bull.Soc.Sci.nat. Maroc, 7 (1 - 3) : 50 - 99, pls. VI - VII, figs. 1 - 11.
- , 1928. Première note complémentaire sur les Ascidien de la côte Atlantique.- Bull. Soc. Sci. nat. Maroc, 8 (7 - 9) : 162 - 172.
- , 1929. Seconde note complémentaire sur "les Ascidien de la côte Atlantique du Maroc".- Bull. Soc. Sci.nat.Maroc, 9 (7 - 8) : 113 - 119.
- , 1932. Die von Dr. L. Kohl - Larsen gesammelten Ascidien von Süd - Georgien und der Stewart Insel.- Senckenbergiana, 14 : 1 - 19, figs. 1 - 12.
- TOKIOKA, T., 1953. Ascidians of Sagami Bay.- 1 - 315, pls. 1 - 80 (Iwanami Shote, Tokyo).
- , 1967. Pacific Tunicata of the United States National Museum.- Bull.Smiths.Inst.U.S.nation.Mus., 251 : 1 - 247, figs. 1 - 105.
- TRAUSTEDT, M.P.A., 1883. Vestindiske Ascidiae simplices Anden Afdeling (Molgulidae og Cynthiidae).- Vidensk. Medd.naturh.Foren.København, 1882 (4) : 108 - 136, pls. V - VI.
- , 1884. Ascidiae simplices fra det Stille Ocean.- Vidensk.Medd.naturh. Foren.København, 1884 : 1 - 60, pls. I - IV.
- NAME, W.G., VAN, 1902. The ascidians of the Bermuda Islands.- Trans.Connecticut Acad.Arts Sci., 11 (1) : 323 - 411, pls. XLVI - LXIV.
- , 1910. Compound ascidians of the coasts of New England and neighboring British Provinces.- Proc. Boston Soc.nat. Hist., 34 : 339 - 424, figs. 1 - 25, pls. 34 - 39.
- , 1918. Ascidians from the Philippines and adjacent waters.- Bull.U.S.nation. Mus., 100 (1) : 49 - 174, pls. 23 - 33, figs. 1 - 115.
- , 1924. Ascidians from Curaçao.- Bijdr.Dierk., 23 : 23 - 32, figs. 1 - 7.
- , 1945. The North and South American ascidians.- Bull.Amer.Mus.nat.Hist., 84 : I - VII, 1 - 476, figs. 1 - 327, pls. 1 - 31.
- VERRILL, A.E., 1871. Brief contributions to zoology from the Museum of Yale College, XVI. On the distribution of marine animals on the South coast of New England.- Amer.Journ.Sci.Arts, (3) 2 (11) : 357 - 362.
- WEINSTEIN, F., 1961. Psammostyela delamarei n.g., n.sp., Ascidie interstitielle des sables à Amphioxus.- C.R. Séanc.Acad.Sci. Paris, 252 : 1843 - 1844 + fig.

Dr. S. van der Spoel
Zoological Museum of the
University of Amsterdam
Plantage Middenlaan 53
Amsterdam - The Netherlands

Received: March 6, 1969