

# REVISION OF THE AMATHUSIIDAE IN THE MUSEUMS AT LEIDEN AND AT AMSTERDAM

by

**D. BAKKER**

With Plates IX-XIII and three textfigures

---

Besides the Amathusiidae in the general collection the Rijksmuseum van Natuurlijke Historie at Leiden possesses a considerable number of representatives of the group, in excellently preserved specimens, in the collection of the late Mr. J. H. Jurriaanse. Moreover I could study the Amathusiidae in the collection of the Zoological Laboratory at Groningen, at present in the custody of the Leiden Museum. After I had completed my work at Leiden I had an opportunity to examine the material of the group in the Zoologisch Museum at Amsterdam, which, besides the general collection of the Society "Natura Artis Magistra" consists of the collections of the late Messrs. A. Mos and P. J. van den Bergh. In the following pages the different collections at Leiden are indicated by L., J., and G., those at Amsterdam by A., M., and B. respectively. I want to express my thanks to the directors of the two Museums, Prof. H. Boschma at Leiden and Prof. L. F. de Beaufort at Amsterdam for giving me the opportunity to study the material. Further I am indebted to Dr. C. de Jong of the Leiden Museum, who at my request made the photographs and drawings of the male genitals of a number of specimens, reproduced in the present paper.

## 1. Subfamilia AMATHUSIINAE F. Moore, 1893

### 1. Genus **Amathusia** J. C. Fabr., 1807

#### **Amathusia phidippus phidippus** (Johans., 1764)

L. 1 ♂ Batavia, 1916. 1 ♂ Batavia, 11 Dec. 1 ♂ Batavia, Dec. 1 ♂ Batavia, 9-5-'24. 1 ♂ Batavia, 23-5-'24. 1 ♂ Buitenzorg, July 1909, H. W. v. d. Weele. 1 ♂ Buitenzorg, 8-8-'09, H. W. v. d. Weele. 2 ♂♂ Weltevreden, 25-10-'12, D. van Mullem. 1 ♂ Bandoeng, W. Java, 9 July. 1 ♂ Bandoeng, Java, 20-7-'12, Oudemans. 3 ♂♂ Garoet, Java, 13-4-'93, Mrs. Aster. 1 ♂ Palabuan, S. Java, 1892, H. Fruhstorfer. 1 ♂ Wynkoops

Bay, W. Java, 11 March. 1 ♂ Wynkoops Bay, W. Java, 15 March. 1 ♂ Bantam, Sept. 1 ♂ Ambarawa, Ludeking. 2 ♂♂ Java, Reinwardt. 1 ♂ Java, Greiner. 1 ♀ Batavia, Java, 1880. 1 ♀ Batavia, 8-5-'24. 1 ♀ Batavia, 9-5-'24. 1 ♀ Batavia, 16-5-'24. 3 ♀♀ Weltevreden, 25-10-'12, D. van Mullem. 1 ♀ Sukabumi, W. Java, 2000', 1893, H. Fruhstorfer. 2 ♀♀ Wynkoops Bay, W. Java, 20 March. 5 ♀♀ Tjimahi, Java, 1908, H. E. Wempe. 1 ♀ Tegal, Java. 1 ♀ Djasinga, W. Java, Febr. 1 ♀ Java, Reinwardt. 1 ♀ Java, Greiner.

J. 2 ♂♂ W. Java. 1 ♂ Sukabumi, W. Java. 2 ♀♀ W. Java. 1 ♀ Sukabumi, W. Java.

A. 2 ♂♂ Preanger. 1 ♂ Indo Australia, Coll. A. J. Buis. 1 ♀ without data.

B. 1 ♂ Java, 1902. 1 ♀ Kediri, Java, 1915. 1 ♀ Java, 1915. 1 ♀ Java, 1920.

*Forma retrograda* Fruhst., 1911

L. 1 ♂ Batavia, Java. 1 ♂ Batavia, 22 August. 1 ♀ Batavia, Java, 1881. 1 ♀ Batavia, 8-5-'24.

A. 2 ♀♀ Java, 1872, Bieber.

B. 1 ♂ Djember, Java, 1922. 1 ♀ Djember, Java, 1922.

***Amathusia phidippus majada*** Fruhst., 1916

L. 1 ♂ Ardjoeno, Hekmeijer. 1 ♂ Java. 1 ♂ Semarang, C. J. Meijer.

B. 1 ♂ Kediri, Java, 1912. 1 ♀ Kediri, Java, 1912.

***Amathusia phidippus lumbokiana*** Fruhst., 1905

J. 1 ♂ Lombok.

***Amathusia phidippus eutropius*** Fruhst., 1911

L. 1 ♂ Bekri, Deli, April 1892, H. M. Pantekoek. 1 ♂ Padang, Deli, E. Sumatra, 1894, E. Büttikofer. 1 ♂ Padang Sidempuan, N. W. Sumatra, 1890, J. D. Pasteur. 1 ♂ Tapanuli, Sumatra, 1895, A. L. van Hasselt. 1 ♂ Rembu near Bugi Pingi, Padang, W. Sumatra, 1904, J. Menzel. 1 ♂ W. Sumatra, Van Rhijn. 1 ♂ Pladju, Sumatra 1923, Ir. P. van Hemert, leg. Dr. C. R. Bakker. 1 ♂ Pajokumbuh Kato Alam, Sumatra, April 1915, E. Jacobson. 2 ♂♂ Sukadana, Lampong, S. E. Sumatra, 1883, J. C. van Hasselt. 5 ♂♂ Rhio-Lingga, 1893-1894, A. L. van Hasselt. 2 ♂♂ Rhio-Lingga, 1895, A. L. van Hasselt, 1 ♂ Rhio-Lingga, July 1909. 1 ♂ Bangka, V. d. Bossche. 2 ♂♂ Kalianda, Telokbetong, S. Sumatra, 1928, Bedier de Prairie. 2 ♀♀ Tandjong Morawa, Serdang, N. E. Sumatra, Dr. B. Hagen. 1 ♀ Padang Sidempuan, N. W. Sumatra, 1890, J. D. Pasteur. 1 ♀ Bekri, Deli, April 1892, H. M. Pantekoek. 1 ♀ Sumatra expedition, 1 ♀

Kumanis, Sumatra, March 1914, E. Jacobson. 1 ♀ P. Buitendijk. 1 ♀ Medan, E. Sumatra, 16-3-'21, J. B. Corporaal. 1 ♀ Sumatra. 7 ♀♀ Rhio-Lingga, 1893-1894, A. L. van Hasselt. 1 ♀ Rhio-Lingga, 1895, A. L. van Hasselt. 2 ♀♀ Kalianda, Telokbetong, S. Sumatra, 1928, Bedier de Prairie. 1 ♀ Wai Lima, Lampong, S. Sumatra, 11-12-'21, Karny & Siebers.

J. 1 ♂ Sumatra. 1 ♂ Bindjei, Deli, Sumatra, Febr. 1903. 1 ♀ Sumatra.

A. 5 ♂♂ C. Sumatra, 1907, Kleiweg de Zwaan. 1 ♂ Lahah, Palembang, 18-6-'74, Giesters. 1 ♀ Lahah, Palembang, 18-6-'74, Giesters. 1 ♀ Medan, 15-3-'10, leg. De Bussy. 1 ♀ Sumatra, Coll. A. J. Buis. 2 ♀♀ Achin, 1916, G. Herman.

B. 1 ♂ Sibolangit, E. Sumatra, 1912. 2 ♂♂ E. Sumatra, 1920. 1 ♂ Singkel, W. Sumatra, 1921. 1 ♂ Singkel, W. Sumatra, 1926. 1 ♀ Sibolangit, W. Sumatra, 1910. 1 ♀ Sibolangit, E. Sumatra, 1911. 1 ♀ Sibolangit, E. Sumatra, 1912. 1 ♀ E. Sumatra, 1920.

*Forma retracta* Fruhst. 1911

L. 1 ♂ Tandjong Morawa, Serdang, Medan, N. E. Sumatra, Dr. B. Hagen. 1 ♂ Medan, 18-3-'20.

***Amathusia phidippus niasana*** Fruhst., 1911

L. 13 ♂♂ Nias, 1890, J. D. Pasteur. 1 ♂ Nias, 1892, J. D. Pasteur. 1 ♂ Nias, 1891. 2 ♂♂ Nias, Coll. Piepers. 1 ♂ Coll. Piepers. 6 ♀♀ Nias, 1890, J. D. Pasteur.

G. 1 ♂ Nias.

B. 1 ♂ Telok Dalam, Nias, 1911. 1 ♀ Nias.

***Amathusia phidippus melanops*** Eecke, 1918

L. 1 ♂ Type, Pulu Lasiak, leg. G. Harmsen, July 1915, E. Jacobson. 1 ♂ Type, Pulu Lasiak, leg. G. Harmsen, Sept. 1915, E. Jacobson. 1 ♂ Type Pulu Lasiak, leg. G. Harmsen, Dec. 1915, E. Jacobson. 2 ♂♂ Types, Pulu Lasiak, leg. G. Harmsen, April 1916, E. Jacobson. 2 ♂♂ Pulu Lasiak, leg. G. Harmsen, April 1915, E. Jacobson. 1 ♂ Pulu Babi, May 1917, G. Harmsen. 1 ♂ Pulu Babi, June 1917, G. Harmsen. 1 ♀ Pulu Babi, June 1916, G. Harmsen.

J. 1 ♂ Pulu Babi, June 1917, G. Harmsen.

A. 2 ♂♂ Pulu Lasiak, April 1916, E. Jacobson, leg. G. Harmsen.

***Amathusia phidippus andamanensis*** Fruhst., 1899

J. 1 ♀ Andaman Islands.

***Amathusia phidippus coriotincta*** H. Stich., 1906

J. 1 ♂ Serassan, Natuna Islands. 2 ♀♀ Serassan, Natuna Islands. 1 ♀ Natuna Islands.

B. 1 ♀ Natuna Islands.

***Amathusia phidippus diluta*** Fruhst., 1904

L. 1 ♂ Kapuas, Borneo expedition, 1894, Dr. Nieuwenhuis.

J. 1 ♀ Sing Kawang, W. Borneo, 23-12-'19.

G. 1 ♂ Borneo. 2 ♀♀ Borneo.

A. 1 ♂ without data. 1 ♀ Barabei, S. E. Borneo, 1883, A. Pool.

B. 1 ♂ Tameanglajang, S. Borneo, 1911. 2 ♂♂ Pontianak, W. Borneo, 1913. 1 ♀ W. Borneo, 1900. 1 ♀ Pontianak, W. Borneo, 1913. 1 ♀ W. Borneo, 1919.

***Amathusia phidippus celebensis*** Fruhst., 1899

L. 1 ♂ Minahassa, Celebes, 1921, Coll. V. d. Bergh. 1 ♂ Tondano, Celebes, 1927, W. van Veldhoven. 1 ♂ Gorontalo, Rosenberg. 1 ♂ Ayer Pannas, Celebes, Rosenberg. 2 ♂♂ Celebes. 2 ♀♀ Minahassa, Celebes, 1921, Coll. V. d. Bergh. 1 ♀ Tondano, 1927, W. van Veldhoven. 1 ♀ Gorontalo, Rosenberg. 1 ♀ Ayer Pannas, Celebes, Rosenberg. 1 ♀ Celebes.

B. 1 ♂ Posso, Celebes, 1908. 1 ♂ Gorontalo, N. Celebes, 1912. 3 ♂♂ Gorontalo, 1913. 1 ♀ Posso, Celebes, 1907. 1 ♀ Minahassa, Celebes, 1912. 1 ♀ Minahassa, Celebes, 1920. 1 ♀ Gorontalo, Celebes, 1912. 2 ♀♀ Gorontalo, Celebes, 1913.

***Amathusia phidippus pollicaris*** Butl., 1870

J. 1 ♀ Los Banos, Philippine Islands.

***Amathusia perakana perakana*** Honr., 1888 (Pl. XIII figs. 3, 4)

L. 1 ♀ Kalianda, Telokbetong, S. Sumatra, 1928, Bedier de Prairie.

The female of *Amathusia perakana perakana* Honr. has not yet been described, but probably the specimen from Kalianda is a female of this subspecies. It possesses the broad median band on the under side of the wings, this band is visible on the upper side in the male of *Amathusia perakana perakana*. On the upper side of the fore wing there is an ultracellular yellow spot which runs till the submedium nervure. Fruhstorfer (in Seitz) described this yellow spot in the female of *Amathusia perakana taenia* Fruhst.

**Amathusia perakana taenia** Fruhst., 1899

- L. 1 ♂ Java. 1 ♂ W. Java.  
 J. 1 ♂ Sukabumi, W. Java.

**Amathusia virgata thoanthea** Fruhst., 1911

- L. 2 ♂♂ Minahassa, Celebes, 1921, Coll. V. d. Bergh. 2 ♂♂ Tondano, 1927, Van Veldhoven. 1 ♂ Gurupahi, N. Celebes, 24-8-'17, W. Kaudern.  
 J. 1 ♂ Celebes. 1 ♀ Celebes.  
 M. 1 ♂ Sawangan, N. Celebes, H. Rolle.  
 B. 1 ♂ Posso, Celebes, 1907. 3 ♂♂ Minahassa, Celebes, 1912.

2. Genus **Amathuxidia** O. Stauding., 1887**Amathuxidia amythaon amythaon** (Doubl., 1847)

- J. 2 ♂♂ Khasia Hills, Assam, 1920.

**Amathuxidia amythaon lucida** Fruhst., 1904

- L. 2 ♂♂ Kalianda, Telokbetong, S. Sumatra, 1928, Bedier de Prairie.  
 2 ♀♀ Kalianda, Telokbetong, S. Sumatra, 1928, Bedier de Prairie. 1 ♀ Deli, Sumatra, Hagen.

**Amathuxidia amythaon insularis** (Doherty, 1891)

- L. 8 ♂♂ Enggano, 1922, E. Jacobson. 11 ♀♀ Enggano, 1922, E. Jacobson.  
 J. 2 ♂♂ Enggano, 1922. 2 ♀♀ Enggano, 1922.  
 B. 1 ♂ Enggano, 1912, 2 ♂♂ Enggano, 1922. 3 ♀♀ Enggano, 1922.

**Amathuxidia amythaon coerulilata** Eecke, 1914

- L. 1 ♂ Type, Pulu Babi, April 1913, E. Jacobson. 1 ♂ Pulu Lasiak, April 1916. 1 ♀ Pulu Lasiak, April 1915, leg. G. Harmsen, E. Jacobson.

**Amathuxidia amythaon pylaon** (C. & R. Feld., 1866)

- L. 1 ♂ S. Java, 1500', 1891, H. Fruhstorfer. 2 ♂♂ Java, Blume. 1 ♂ Mt. Gedeh, W. Java, 1894. 2 ♀♀ S. Java, 1500', 1891, H. Fruhstorfer. 1 ♀ Java, Blume. 2 ♀♀ E. Java, 1892.  
 J. 2 ♂♂ W. Java. 1 ♀ Sukabumi, Java. 2 ♀♀ Palabuan Ratu, W. Java, April 1920.  
 G. 1 ♂ Java.  
 M. 1 ♂ Tibet (patria falsa?). 1 ♀ Tibet, D. Thockhorn (patria falsa?).  
 B. 1 ♂ Sukabumi, Java, 1910. 3 ♂♂ Java, 1920. 2 ♀♀ Java, 1920.

**Amathuxidia amythaon ottomana** (Butl., 1869)

L. 1 ♂ S. E. Borneo. 1 ♀ S. E. Borneo. 1 ♀ Rhio-Lingga, 1895, A. L. van Hasselt.

J. 1 ♂ Borneo.

G. 1 ♂ S. Borneo, H. Stichel. 1 ♂ Borneo. 1 ♀ Borneo.

A. 1 ♂ Borneo, Coll. P. J. M. Schuyt.

**Amathuxidia plateni plateni** (Stauding., 1887)

L. 2 ♂♂ Minahassa, Celebes, V. d. Bergh, 1921. 1 ♂ N. Celebes. 2 ♂♂ Gorontalo, Rosenberg. 1 ♂ Tondano, N. Celebes, 1927, W. van Veldhoven. 1 ♂ Takabu, Sula Islands, 1905, J. W. van Nouhuys. 1 ♂ Celebes, M. C. Piepers. 1 ♀ Minahassa, Celebes, 1921, V. d. Bergh. 1 ♀ Limbotto, Celebes, Rosenberg.

J. 1 ♂ Celebes. 1 ♂ Tangarie, 22-2-'20. 1 ♂ Tondano, Celebes. 1 ♀ Toli-Toli, N. Celebes, Nov. 1895, H. Fruhstorfer.

G. 1 ♂ Celebes. 1 ♂ Toli-Toli, N. Celebes, Nov. 1895, H. Fruhstorfer.

M. 1 ♂ Celebes, W. Niepelt.

B. 3 ♂♂ Minahassa, Celebes, 1912. 2 ♂♂ Minahassa, Celebes, 1920. 1 ♂ Minahassa, Celebes, 1921. 3 ♀♀ Minahassa, Celebes, 1920. 1 ♀ Minahassa, Celebes, 1921.

3. Genus **Thaumantis** Jac. Hübner, 1820-1826**Thaumantis diores diores** Doubl., 1845

L. 1 ♂ Assam, 1920, J. H. Watson. 1 ♂ N. W. Himalaya, Moore. 1 ♂ Bengal, Moore. 1 ♂ N. India, Janet. 1 ♀ Syltich, Westwood.

J. 8 ♂♂ Khasia Hills, Assam, 1920. 1 ♂ Janitia Hills, Assam, 1920.

G. 1 ♂ Sikkim.

M. 1 ♂ Assam, A. Grubert.

Forma *ramdeo* F. Moore, 1857

L. 1 ♂ Khasia Hills, Assam, 1920, Moore. 1 ♂ India, De Nicéville.

G. 1 ♂ Sikkim. 1 ♀ Sikkim.

**Thaumantis klugius** (Zink.-Somm., 1831)

*Thaumantis klugius* was described and figured by Zinken-Sommer (Nova Acta Ac. Leop., vol. 15, p. 165, fig. 11, 1831). As locality he gives Java. The specimens regarded by Zinken-Sommer as the females of *Thaumantis klugius*, in reality belong to *Thaumantis odana odana* (God.). Westwood (Gen Diurn. Lep., vol. 2, p. 337, 1851) described *Thaumantis lucipor* from Borneo. Afterwards many specimens of *Thaumantis lucipor* Westw.

have been collected in Borneo, Sumatra, Bangka, Belitong, Malay Peninsula and Tenasserim. In the literature on the genus the name *Thaumantis lucipor* has been in constant use, the name *klugius* seems to have been almost forgotten. But as the ♂ of *Th. klugius* is identical with that of *Th. lucipor* the two names belong to the same species, and evidently *klugius* has priority over *lucipor*. Stichel (Lepidopterorum Catalogus, pars 54, 1933) gives the following classification:

*Thaumantis klugius* (Zink.-Somm.) (1831).

Subsp. *klugius* (Zink.-Somm.) (1831) inhabiting Java.

Subsp. *lucipor* Westw. (1851) inhabiting Borneo.

Subsp. *candika* Fruhst. (1905) inhabiting Sumatra, Bangka, Belitong, Malay Peninsula and Tenasserim.

Staudinger (Exot. Schmett. vol. 1, p. 203 (part.), 1887) compared *Th. lucipor* Westw. ♂ with the figure of *Th. klugius* by Zinken-Sommer, and remarks: "*Th. klugius* (Zink.-Somm.) ♂ von Java variirt von den Borneo ♂♂ durch einen kleinen, etwas lichterem Flecken vor dem Apex der Vdfl. und eine auch hier auftretende verloschene Zackenbinde vor dem Aussenrand, bei den Borneo ♂♂ ist diese Zackenbinde schwach angedeutet." The collection of the Rijksmuseum van Natuurlijke Historie at Leiden possesses 3 ♂♂ labelled as collected by Blume from Java. As I cannot find any difference between the Borneo and Java specimens, I propose the following classification:

*Thaumantis klugius klugius* (Zink.-Somm.) inhabiting Java and Borneo.

*Thaumantis klugius candika* Fruhst. inhabiting Sumatra, Bangka, Belitong, Rhio-Lingga, Natuna Islands, Malay Peninsula and Tenasserim.

It is a curious fact that *klugius* originally was described from specimens from Java. Since 1831 never any specimens have been reported from this island. As far as concerns the three specimens in the Leiden Museum belonging to *klugius*, and labelled "Blume, Java", it must be remarked that even this does not prove that the species really occurs here. Among the entomological material collected by Blume there are known instances of incorrect localities, and therefore the locality "Java" also in this case may be incorrect.

### ***Thaumantis klugius klugius* (Zink.-Somm., 1831)**

L. 3 ♂♂ Java, Blume. 1 ♂ Mahakkam, Borneo expedition, 1894, Dr. Nieuwenhuis. 1 ♂ Borneo. This specimen in the anal angle of the under side of the posterior wing possesses an oblong black spot, blueish white at the ends. This spot is always present in the ♀♀. Distant (Rhopalocera Malayana, p. 78, pl. 9 fig. 8) describes and figures this spot also

in the ♂♂. 1 ♂ Central E. Borneo, 24-11-'25, H. C. Siebers, with small ocelli on the under side of the hind wing. 1 ♀ Borneo, Diard. 1 ♀ Central E. Borneo, 17-11-'25. H. C. Siebers.

J. 2 ♂♂ Sintang, Borneo, 16-2-'13.

G. 1 ♂ Borneo. 1 ♀ Borneo, leg. Atkinson.

B. 2 ♂♂ Sesajap river, N. E. Borneo, 1922, both with the oblong black spot in the anal angle on the under side of the hind wing. 1 ♂ Borneo, 1903. 1 ♂ Pontianak, Borneo, 1913. 1 ♀ Tameanglajano, S. Borneo, 1911. 1 ♀ Palabuan Ratu.

#### **Thaumantis klugius candika** Fruhst., 1905

L. 1 ♂ Deli, Sumatra. 1 ♂ Bekri, Deli, April 1892, H. M. Pantekoek. 2 ♂♂ Tandjong Morawa, Serdang, N. E. Sumatra, Dr. B. Hagen. 2 ♂♂ Padang Sidempuan, Tapanuli, 1895, A. L. van Hasselt. 1 ♂ Toba Lake, Sumatra, Dr. B. Hagen. 2 ♂♂ Rhio-Lingga, 1895, A. L. van Hasselt. 5 ♂♂ Pulau Tudjuh, Natuna Islands, 1895, A. L. van Hasselt. 1 ♂ from Belitong with great ocelli on the under side of the hind wings. 2 ♂♂ Tapanuli, Sumatra, A. L. van Hasselt. 6 ♂♂ Pulau Tudjuh, Natuna Islands, 1895, A. L. van Hasselt. 1 ♂ Kalianda, Telokbetong, S. Sumatra, 1928, Bedier de Prairie. 1 ♀ Kalianda, Telokbetong, S. Sumatra, 1928, Bedier de Prairie.

A. 1 ♂ Sumatra. 1 ♂ Deli, Sumatra, Waldeck. 1 ♂ without data. 2 ♀♀ Deli, Sumatra, Waldeck.

B. 1 ♂ Singkel, W. Sumatra, 1921, with an oblong black spot in the anal angle on the under side of the hind wing.

#### **Thaumantis odana odana** (God., 1824)

L. 2 ♂♂ Gunung Ungaran, 1000 m, 7 Oct. 1 ♂ Gunung Ungaran, Java, Oct. 1920, E. Jacobson. 1 ♂ Tjampea, W. Java, 1892. 1 ♂ Tjampea, Java. 1 ♂ Sukabumi, June 1909, Dr. H. W. van der Weele. 1 ♂ W. Java, 2000 m, 1893, H. Fruhstorfer. 1 ♂ Bantan Mountains, Sept. 1 ♂ Palabuan, S. Java, 1892, H. Fruhstorfer. 2 ♂♂ Java, Reinwardt, 1 ♂ Java, Verhuell. 1 ♀ Gunung Ungaran, 1000 m, Oct. 2 ♀♀ Tjampea, W. Java 1892. 1 ♀ Tjampea, 1894. 1 ♀ Sukabumi, Dr. H. W. van der Weele. 1 ♀ Batavia, Java, 1909, W. C. van Heurn. 1 ♀ S. Java, 150 m, 1891, H. Fruhstorfer. 2 ♀♀ Java, Reinwardt. 2 ♀♀ Java. 1 ♀ Java, 15 May 1910, Miss R. Driessen. 1 ♀ 1909, Royer.

J. 2 ♂♂ Sukabumi, W. Java. 1 ♂ E. Indian Archipelago. 2 ♀♀ Sukabumi, W. Java.

G. 1 ♂ Java.



- A. 4 ♂♂ without data. 4 ♀♀ without data.  
 B. 2 ♂♂ Java, 1913. 1 ♂ Java, 1915, 1 ♀ Java, 1902. 2 ♀♀ Java, 1915.

**Thaumantis odana cyclops** Röber, 1904

L. 1 ♂ Mahakkam, Borneo expedition, 1894, Dr. Nieuwenhuis. 2 ♂♂ S. E. Borneo. 1 ♂ Banjarmasin, Dr. H. W. van der Weele. 1 ♂ G. Zenepai, Borneo, 16 Jan. 1894. 1 ♂ W. Borneo, Oct. 1892. 2 ♂♂ Central E. Borneo, 1925, H. C. Siebers. 1 ♀ Mahakkam, Borneo expedition, 1894, Dr. Nieuwenhuis. 1 ♀ Central E. Borneo, 1-9-'25, H. C. Siebers.

G. 1 ♂ Borneo. 1 ♀ Borneo.

A. 2 ♂♂ S. Borneo, 1897, Coll. Corporaal. 3 ♂♂ without data.

**Thaumantis odana paramita** Fruhst., 1905

L. 1 ♂ Rimbo Pangadang, Sumatra, 19-6-'16, E. Jacobson. 1 ♂ N. W. Gunung Teleman, 1000 m, Ophir, Sumatra, May 1917, E. Jacobson. 1 ♂ Balun, Sumatra, June 1914, E. Jacobson. 2 ♂♂ Kalianda, Telokbetong, S. Sumatra, 1928, Bedier de Prairie. 1 ♀ Balun, June 1914, E. Jacobson. 1 ♀ July 1914, E. Jacobson. 1 ♀ Sinlak Derao, Sumatra, Sept. 1915, E. Jacobson. 1 ♀ Solok, Padang, 1908, P. O. Stolz. 1 ♀ Kalianda, Telokbetong, S. Sumatra, Bedier de Prairie.

B. 1 ♂ W. Sumatra, 1907.

**Thaumantis noureddin sigirya** Fruhst., 1911

L. 1 ♂ Padang Sidempuan, N. W. Sumatra, 1890, J. D. Pasteur, 1 ♀ Tandjong Morawa, Serdang, N. E. Sumatra, Dr. B. Hagen.

**Thaumantis noureddin sultanus** Stich., 1906

L. 1 ♂ Pulu Sibau River, June, Büttikofer. 1 ♂ W. Borneo, Oct. 1892. 1 ♂ W. Borneo, 1893. 2 ♂♂ Borneo, Diard. 1 ♂ Borneo. 1 ♂ without data. 2 ♀♀ Borneo, Diard. 1 ♀ W. Borneo, Oct. 1892.

G. 2 ♂♂ Borneo, 1 ♀ Borneo.

A. 1 ♂ Borneo. 1 ♀ Borneo.

B. 1 ♂ Borneo, 1902. 1 ♂ Pontianak, Borneo, 1913. 1 ♀ Borneo, 1907.

**Thaumantis noureddin chatra** Fruhst., 1905

L. 1 ♂ Borneo. 1 ♂ Rhio-Lingga, 1893-1894, A. L. van Hasselt, with a distinct blue reflection at the base on the upper side of the wings.

J. 1 ♂ N. Borneo. 1 ♀ Mt. Marapok, Br. N. Borneo, collector G.

B. 1 ♂ Sesajap river, N. E. Borneo, 1922.

4. Genus **Zeuxidia** Jac. Hübn., 1820-1826**Zeuxidia amethystus amethystus** Butl., 1865

L. 3 ♂♂ Kalianda, Telokbetong, S. Sumatra, 1928, Bedier de Prairie.  
 1 ♀ Deli, Sumatra, Dr. Hagen. 1 ♀ Djermdja, Anamba Islands, 1895,  
 A. L. van Hasselt. 1 ♀ Kalianda, Telokbetong, S. Sumatra, 1928, Bedier  
 de Prairie.

**Zeuxidia amethystus wallacei** C. & R. Feld., 1866

L. 1 ♂ W. Borneo, 1894. 1 ♂ S. E. Borneo. 1 ♀ S. E. Borneo.  
 J. 1 ♂ S. Borneo, 1897, Corporaal.  
 G. 2 ♂♂ S. Borneo. 1 ♂ Borneo. 2 ♀♀ S. Borneo. 1 ♀ Borneo.  
 A. 2 ♂♂ without data.

**Zeuxidia doubledaii horsfieldii** C. & R. Feld., 1866

L. 1 ♂ S. E. Borneo. 2 ♂♂ Martapura, S. E. Borneo. 1 ♂ Borneo,  
 Staudinger. 1 ♂ Borneo. 1 ♂ without data. 1 ♀ S. E. Borneo. 1 ♀  
 W. Borneo, 1894. 1 ♀ Borneo, Staudinger. 1 ♀ Borneo, Heijer. 1 ♀ Java  
 (patria falsa?), Blume.  
 G. 1 ♂ S. Borneo. 1 ♀ S. Borneo. 1 ♀ S. Borneo.  
 B. 1 ♂ Banjermasin, S. E. Borneo. 1 ♀ Borneo.

**Zeuxidia doubledaii sumatrana** Fruhst., 1906

L. 2 ♀♀ Kalianda, Telokbetong, S. Sumatra, 1928, Bedier de Prairie.

**Zeuxidia nicevillei** Fruhst., 1895

L. 1 ♂ Deli, Sumatra, S. v. L. 1 ♂ Sungai Kumbang, Sumatra, Aug.  
 1915, E. Jacobson. 1 ♀ Belitong, 1888.

**Zeuxidia luxerii luxerii** Jac. Hübn., 1820-1826

L. 1 ♂ Sukabumi, W. Java, 2000', 1893, H. Fruhstorfer. 1 ♂ Gunung  
 Pantjir, W. Java, 1893. 1 ♂ Wynkoops Bay, W. Java, 1892. 2 ♂♂ S. Java,  
 1500', 1891, H. Fruhstorfer. 2 ♂♂ Java, Blume. 1 ♂ E. Java, 1892.  
 1 ♀ Sukabumi, W. Java, 2000', 1893, H. Fruhstorfer. 1 ♀ Mt. Gedeh,  
 W. Java, 4000', Aug. 1892, H. Fruhstorfer. 1 ♀ S. Java, 1500', 1892,  
 H. Fruhstorfer. 2 ♀♀ Java, Blume. 1 ♀ E. Java, 1892. 1 ♀ Java, La N.  
 1 ♀ Guspa, Java, 2100', coll. Piepers.  
 J. 3 ♂♂ Sukabumi, W. Java. 1 ♂ W. Java. 1 ♂ W. Java, Aug. 1919.  
 1 ♀ Sukabumi, W. Java. 1 ♀ W. Java. 1 ♀ Djampang, W. Java, April  
 1920. 1 ♀ Palabuan, May 1920. 1 ♀ Tjimerang, 1500', June 1919.  
 G. 1 ♂ Java. 1 ♀ Java.

- A. 1 ♂ Java. 1 ♂ Preanger. 1 ♂ without data. 2 ♀♀ without data.  
 B. 2 ♂♂ Java, 1920. 2 ♂♂ Java, 1925. 1 ♀ Java, 1906. 3 ♀♀ Java, 1920.

**Zeuxidia sibulana** Honr., 1884

- M. 1 ♂ Borneo, W. Niepelt (patria falsa?).

**Zeuxidia dohrni** Fruhst., 1893

- L. 1 ♂ Type, Mt. Gedeh, W. Java, 4000', Aug. 1893, H. Fruhstorfer.  
 1 ♂ Original of the figure, Mt. Gedeh, W. Java, 4000', 1894. 1 ♀ Mt. Gedeh, W. Java, 5000', 1893. 1 ♀ Java, Blume.  
 J. 1 ♀ Mt. Gedeh, W. Java, 4000'.  
 G. 1 ♂ Mt. Gedeh, W. Java, 4000', Aug. 1892, H. Fruhstorfer. 1 ♀ Mt. Gedeh, W. Java, 4000', Aug. 1892, H. Fruhstorfer.

**Zeuxidia aurelia aurelia** (Cram., 1777)

- L. 1 ♂ Muara Sako, Sumatra, Sept. 1915, E. Jacobson. 1 ♂ Padang Sidempuan, N. W. Sumatra, Aug. 1890, E. Jacobson. 2 ♂♂ Kalianda, Telokbetong, S. Sumatra, 1928, Bedier de Prairie. 1 ♀ Sumatra, Raye.  
 1 ♀ Kalianda, Telokbetong, S. Sumatra, 1928, Bedier de Prairie.  
 A. 2 ♂♂ Deli, Sumatra, Waldeck. 1 ♀ Deli, Sumatra, Waldeck.  
 M. 1 ♀ Padang Pandjang.  
 B. 1 ♂ Sumatra, 1893. 1 ♀ Sibolangit, E. Sumatra, 1911.

**Zeuxidia aurelia aureliana** (Honr., 1889)

- L. 1 ♀ S. E. Borneo.  
 J. 1 ♀ S. E. Borneo.  
 G. 1 ♂ Borneo.  
 M. 1 ♂ S. Borneo. 1 ♀ S. Borneo.  
 B. 1 ♀ Borneo.

5. Genus **Thauria** F. Moore, 1895

**Thauria aliris aliris** (Westw., 1858)

- L. 2 ♂♂ G. Kenepai, Borneo. 1 ♀ S. E. Borneo. 1 ♀ Central E. Borneo, 15-10-'25, 1200 m, H. C. Siebers.

**Thauria lathyi lathyi** (Fruhst., 1902)

- J. 1 ♀ Tonkin.

6. Genus **Stichophthalma** C. & R. Felder, 1862

**Stichophthalma camadeva camadeva** (Westw., 1848)

- L. 1 ♂ E. India, E. Heyne.

- J. 1 ♂ Darjeeling, Sikkim. 1 ♀ Darjeeling, Sikkim.  
 G. 1 ♂ Sikkim.  
 A. 1 ♀ 1875, E. Heine.

**Stichophthalma camadeva nicevillei** Rüb., 1900

- L. 1 ♂ Bengal. 1 ♂ Assam, 1896-1905, H. Fruhstorfer. 1 ♀ Manphlony, Assam, 1926, J. H. Watson.  
 G. 1 ♂ Assam. 1 ♀ without data.

**Stichophthalma camadeva camadevoides** Nicév., 1898

- L. 1 ♂ Khasia Hills, Assam, 12-7-'20, Coll. J. H. Jurriaanse. 1 ♂ Manipur, India, Coll. Moore. 1 ♀ Khasia Hills, Assam, 12-7-'20, Coll. J. H. Jurriaanse. 1 ♀ Khasia Hills, Assam, 1920.  
 J. 8 ♂♂ Khasia Hills, Assam. 1 ♂ Khasia Hills, Assam, 1921, Watson.  
 2 ♂♂ Khasia Hills, Assam, 1920. 2 ♀♀ Khasia Hills.  
 A. 1 ♀ India, Coll. P. J. M. Schuyt.  
 M. 2 ♂♂ Tonkin, 1 ♀ without data.

**Stichophthalma fruhstorferi** Rüb., 1903

- L. 1 ♀ Tonkin, Than-Moi, June, July, Fruhstorfer.  
 J. 1 ♂ Tonkin.

**Stichophthalma louisa louisa** (Wood-Mas., 1877)

- L. 1 ♂ Tenasserim, Burma, De Nicéville.  
 J. 1 ♂ Tenasserim.  
 M. 1 ♂ Java, E. India (patria falsa?), H. Rolle.

**Stichophthalma louisa mathilda** Jan., 1905

- L. 1 ♂ Laos, Tonkin, Janet.

**Stichophthalma howqua howqua** (Westw., 1851)

- L. 1 ♂ Ningpo, Felder.

**Stichophthalma howqua suffusa** Leech, 1892

- L. 1 ♂ S. E. China, Got. 2 ♂♂ Ta-t sien-lou, at Mou-Pin, Indian Hunters, summer 1892. 1 ♂ Coll. Heylaerts. 1 ♀ S. E. China, Got.  
 J. 1 ♂ Thibet, 1 ♀ Omei Shan, China, 1 ♀ Thibet.  
 M. 1 ♀ E. India, M. Brunner.

**Stichophthalma howqua formosana** Fruhst., 1908

- L. 2 ♂♂ Aliking, Formosa, June 1909, H. Sauter. 1 ♂ Kanshirei, For-

mosa, 1908, H. Sauter, 1 ♂ Formosa, 1909, H. Sauter. 1 ♂ Kosempo, July 1909, H. Sauter. 1 ♂ Lehikir, July 1909, H. Sauter.

**Stichophthalma howqua tonkiniana** Fruhst., 1901

L. 1 ♀ Than-Moi, Tonkin, June, July, H. Fruhstorfer.

J. 1 ♂ Tonkin.

G. 1 ♀ Tonkin.

M. 1 ♂ Tonkin, 1 ♀ without data.

**Stichophthalma neumogeni neumogeni** Leech, 1892

L. 1 ♂ Se Pin-Lou Chan, Ya Tche Ou, Indian Hunters, 1893.

**Stichophthalma nourmahal nurinissa** Nicév. 1890

J. 1 ♀ Sikkim.

G. 1 ♂ Sikkim.

These two specimens belong to the subsp. *nurinissa* Nicév. from Bhutan. They were sold under the name of the rare subsp. *nourmahal* (Westw.) from Assam and Sikkim. See Fruhstorfer's note of warning in A. Seitz (Grossschmett. Erde, vol. 9, p. 424, 1911).

M. 1 ♂ India, W. Niepelt.

8. Genus **Faunis** Jac. Hübn., 1818

**Faunis phaon luridus** (C. & R. Feld., 1866)

L. 1 ♂ Mindoro, Staudinger. 1 ♀ Mindoro, Staudinger.

**Faunis leucis** (C. & R. Feld., 1861)

L. 1 ♂ Mindanao, Staudinger. 1 ♀ Philippine Islands, Semper. 1 ♀ Mindanao, Staudinger.

J. 1 ♂ Philippine Islands.

**Faunis gracilis** (A. G. Butl., 1867)

L. 1 ♂ Deli, Sumatra, Schagen v. Leeuwen. 1 ♂ Tandjong Morawa, Serdang, N. E. Sumatra, Dr. B. Hagen. 1 ♀ Sabang, 21 April. 1 ♀ Kalianda, Telokbetong, S. Sumatra, 1928, Bedier de Prairie.

B. 1 ♂ W. Sumatra, 1916.

**Faunis menado menado** (Hew., 1863)

L. 1 ♂ Panyta, Celebes, Rosenberg. 1 ♂ Bonec, Celebes, Rosenberg. 1 ♂ Gorontalo, Rosenberg. 1 ♂ Minahassa, Celebes, 1912, V. d. Bergh. 1 ♂ N. Celebes, Coll. V. d. Bergh. 1 ♂ Gurupahi, N. Celebes, 4-4-'17, W. Kaudern. 1 ♂ Menado, N. Celebes, 1891. 1 ♂ Celebes, Riedel. 1 ♂

without data. 1 ♂ Gurupahi, N. Celebes, 4-4-'17, W. Kaudern. 2 ♀♀ Minahassa, Celebes, 1912, Coll. V. d. Bergh. 1 ♀ Celebes, M. C. Piepers.

J. 1 ♂ C. Celebes. 1 ♀ C. Celebes.

G. 1 ♀ Celebes.

A. 1 ♀ without data.

M. 1 ♀ N. Celebes.

B. 1 ♂ Minahassa, Celebes, 1912. 2 ♂♂ Minahassa, Celebes, 1920. 1 ♀ Minahassa, Celebes, 1912. 1 ♀ Minahassa, Celebes, 1919. 2 ♀♀ Minahassa, Celebes, 1920.

**Faunis menado pleonasma** (Röb., 1896)

L. 1 ♂ Todjambu near Aleppo, 800-1000 m, 13-7-'36, with extra ocelli. 1 ♂ Todjambu, 700 m, 18-7-'36, intermediate form to subsp. *menado* (Hew.), dark specimen, without white band. 1 ♂ Todjambu, 1000 m, 16-7-'36, dark specimen. 1 ♂ Todjambu, 700 m, 18-7-'36, light specimen. 1 ♂ Todjambu, 15-7-'36. 1 ♂ Todjambu, 800-1000 m, 13-7-'36. 2 ♂♂ Todjambu, 1000 m, 18-7-'36. 1 ♀ Malili, 1936. 1 ♀ Todjambu, 1000 m, 16-7-'36, dark specimen.

G. 1 ♂ Bangki, E. Celebes.

**Faunis menado chitone** (Hew., 1862)

L. 1 ♂ Celebes, Coll. Snellen. 1 ♂ Celebes, Coll. Snellen and Piepers. 1 ♂ Waterfall near Maros, 20 Oct. 1916. 1 ♂ Bantimurung, Waterfall near Maros, 20-10-'16. 2 ♂♂ Bantimurung, Celebes, 7 Aug., Van Gelder. 1 ♂ Bantimurung, Celebes. 1 ♀ Bantimurung, 7-8-'89, Van Gelder. 1 ♀ Gorontalo, Rosenberg. 1 ♀ Bantimurung, Celebes. 1 ♀ Amparan, Celebes, Coll. Snellen and Piepers. 1 ♀ Buton, S. E. Celebes, 1909, J. Elbert. 2 ♀♀ Neengo, Watampone, 500 m, 23-6-'36.

G. 1 ♂ S. Celebes.

A. 1 ♀ Celebes.

B. 3 ♂♂ Bantimurung, Celebes, 1912.

*Forma fruhstorferi* (Röb., 1896)

L. 3 ♂♂ Malino, 1000 m, 29-6-'36. 1 ♂ Malino, 1000 m, 21-6-'36. 1 ♂ Malino, 1000 m, 30-6-'36, narrow white band, intermediate form to subsp. *chitone* (Hew.). 1 ♂ Bonthain Peak near Lenbaja, 1100 m, 2-7-'36, dark specimen, broad white band. 1 ♂ Bonthain Peak, Celebes.

**Faunis menado toxopeusi** nov. subsp. (Pl. IX figs. 1, 2)

Named after Dr. L. J. Toxopeus, who collected the material.

♂ Upper side similarly coloured as subsp. *pleonasma* (Röb.). Ocelli

indistinctly visible on the upper side of the hind wing. Under side dark brown, faintly tinged with green. Only a slight indication of a blue band crossing the angle of the fore wing. The ocelli on the hind wing of medium size, with a small light yellow ring.

♀ Upper side as subsp. *pleonasma* (Röb.). Under side dark brown, not so dark as the ♂♂, faintly tinged with green. A narrow white band, crossing the angle of the fore wing, runs till the medium cross-band.

L. 1 ♂ Holotype, Nauggala, Rantepao, C. Celebes, 1936. 2 ♂♂ Nauggala, Rantepao, C. Celebes. 1 ♂ Nauggala, Rantepao, C. Celebes, 1936, with small ocelli. 3 ♀♀ Nauggala, Rantepao, C. Celebes, 1936, with small ocelli.

The ♂ with the small ocelli (the type!) and the three ♀♀ belong to the

Forma *microocellata* forma nov.

Ocelli small.

**Faunis stomphax stomphax** (Westw., 1858)

L. 1 ♂ W. Borneo, 1893. 1 ♂ Martapura, S. E. Borneo. 1 ♀ W. Borneo, Oct. 1892. 1 ♀ N. Borneo, V. d. Weele, the white band is interrupted. 1 ♀ Sarawak, Borneo. 1 ♀ Belitong. 1 ♀ Padang Sidempuan, Tapanuli, 1895, A. L. van Hasselt. 1 ♀ Java (*patria falsa?*), Reinwardt.

G. 1 ♂ Borneo. 1 ♂ S. Borneo. 1 ♀ Borneo.

A. 1 ♂ without data.

Forma *besa* (Hew., 1862)

G. 1 ♂ N. Borneo.

Forma *caecus* Brooks, 1933

L. 1 ♂ Borneo, Staudinger. 1 ♀ Borneo, Staudinger. 1 ♀ Kalianda, Telokbetong, S. Sumatra, 1928, Bedier de Prairie.

J. 2 ♂♂ N. Borneo.

G. 2 ♂♂ Borneo.

A. 1 ♂ Indo Australia, coll. A. J. Buis.

**Faunis canens canens** Jac. Hübn., 1820-1826

L. 3 ♂♂ Java, Reinwardt. 2 ♂♂ Mt. Gedeh, W. Java, 1882. 1 ♂ Tjibodas, W. Java, 1890. 1 ♂ Tjibodas, July 1909, Dr. H. W. van der Weele. 1 ♂ Buitenzorg, May 1909, Dr. H. W. van der Weele. 2 ♂♂ Dr. H. W. van der Weele. 1 ♂ Tjibodas, Java, Febr. 1916, E. Jacobson. 1 ♂ Java, E. Jacobson. 2 ♂♂ Gunung Ungaran, Java, Oct. 1910, E. Jacobson. 1 ♂ Gunung Ungaran, 800 m, 16 Oct. 1 ♂ Java, Coll. Piepers and Snellen. 1 ♂ Gunung Bunder, W. Java, 1892. 1 ♂ Wynkoops Bay, 25 March. 2 ♂♂ Batavia, Java, 1909, Jhr. W. C. van Heurn. 1 ♂ Sumber

Duren, Java, 1909, Jhr. W. C. van Heurn. 2 ♂♂ Salak Mountains, W. Java, July. 1 ♂ Salatiga, Java. 2 ♂♂ Sukabumi, W. Java, 2000', 1893. 1 ♂ H. Fruhstorfer. 1 ♂ S. Java, 1500', 1891, H. Fruhstorfer. 1 ♂ Semarang, 300 m, 15 Aug. 1 ♂ E. Java. 3 ♂♂ Coll. Metzger. 1 ♀ Java, Reinwardt. 2 ♀♀ Mt. Gedeh, W. Java, 1881. 2 ♀♀ Dr. H. W. van der Weele. 1 ♀ Buitenzorg, Dr. H. W. van der Weele. 1 ♀ Buitenzorg, Aug. 1909, Dr. H. W. van der Weele. 1 ♀ Gunung Ungaran, Java, Oct. 1910, E. Jacobson. 2 ♀♀ Java Coll. Piepers and Snellen. 1 ♀ Wynkoops Bay, W. Java, 15 Febr. 1 ♀ Wynkoops Bay, W. Java, 12 March. 1 ♀ Tjampea, W. Java, 1892. 1 ♀ Java. 1 ♀ S. Java, 1500', 1891, H. Fruhstorfer. 1 ♀ Mt. Slamet, in the jungle, 4000', Java 1891, T. F. Lucassen. 1 ♀ E. Java. 1 ♀ Banyuwangi, E. Java, 1893.

J. 1 ♂ Mt. Gedeh, W. Java, March 1919. 3 ♂♂ Tjibodas, Mt. Gedeh, W. Java, 1400 m, November 1921. 1 ♂ Sukabumi, Java. 1 ♂ E. Java, Coll. Dunlop. 1 ♀ Mt. Gedeh, W. Java, Jan. 1919. 1 ♀ W. Java.

G. 1 ♂ Java. 1 ♂ Dr. R. Lück and Mr. B. Gehlen. 1 ♀ Java.

A. 1 ♂ Java, Coll. A. J. Buis. 1 ♂ Geelvink- and Wandammen Bay, Dutch New Guinea, 1920-1922, C. ter Poorten (*patria falsa?*). 3 ♂♂ without data. 4 ♀♀ without data.

B. 1 ♂ Java. 1 ♂ Java, 1902. 3 ♂♂ Java, 1915. 2 ♀♀ Java, 1915. 1 ♀ Palabuan Ratu, Java, 1924.

#### Forma *cyme* Fruhst., 1911

L. 1 ♂ Tjampea, W. Java, 1893. 1 ♂ Sukabumi, W. Java, W. Reuter. These two specimens answer the description of the dry period form *cyme* Fruhst. from E. Java.

#### **Faunis canens borneensis** (Fruhst., 1905)

L. 1 ♂ Martapura, S. E. Borneo, 1901. 1 ♀ Mahakkam. Borneo expedition, 1894, Dr. Nieuwenhuis.

G. 1 ♂ N. Borneo.

#### **Faunis canens niasanus** (Fruhst., 1899)

L. 1 ♂ Nias, Coll. Elwes. 19 ♂♂ Nias, 1890, J. D. Pasteur. 4 ♂♂ Nias, Coll. Piepers. 2 ♂♂ Solok, W. Coast Sumatra 30-9-'10, Max Weber and Kleiweg de Zwaan. 14 ♀♀ Nias, 1890, J. D. Pasteur. 3 ♀♀ Nias, 1892, J. D. Pasteur.

A. 2 ♀♀ Nias, 1857.

B. 2 ♂♂ Nias, 1908. 2 ♀♀ Nias, 1908. 1 ♀ Telok Dalam, Nias, 1911.



**Faunis canens tenuitata** Eecke, 1914

L. 1 ♂ Type, Pulu Babi, Simalur, April 1913, E. Jacobson. 1 ♂ Pulu Lasiak, leg. G. Harmsen, April 1916, E. Jacobson. 2 ♂♂ Pulu Babi, April 1915, G. Harmsen.

J. 1 ♂ Pulu Babi, April 1915, G. Harmsen.

B. 1 ♂ Simalur, 1923. 2 ♀♀ Simalur, 1923.

**Faunis canens arcesilas** H. Stich., 1933

L. 1 ♂ Perak, Malacca, 1891.

J. 1 ♂ Khasia Hills, Assam, 1920.

G. 1 ♂ Assam.

M. 1 ♂ without data. 1 ♀ Siam.

**Faunis canens sumatrensis** Brooks, 1933

L. 1 ♂ Tandjong Morawa, N. E. Sumatra, Dr. B. Hagen. 1 ♂ Muara Labu, 28-11-'77, Sumatra expedition. 1 ♂ Bekri, Deli, April 1892, H. M. Pantekoek. 1 ♂ Tapanuli, Sumatra, 1895, A. L. van Hasselt. 1 ♂ Pajakumbuh, Sumatra, 1906, H. Rouyer. 1 ♂ Surlan, Padang, 23 June 1915, P. O. Stolz. 2 ♂♂ Andalassum, May 1914, E. Jacobson. 1 ♂ Lelong Donok, September 1909, Abdul Rachman. 1 ♂ Rhio-Lingga, 1891-1894, A. L. van Hasselt. 2 ♂♂ Rhio-Lingga, 1895, A. L. van Hasselt. 5 ♂♂ Pulau Tudjuh, Natuna Islands, 1895, A. L. van Hasselt. 2 ♂♂ Kalianda, Telokbetong, S. Sumatra, 1928, Bedier de Prairie. 2 ♂♂ without data. 1 ♀ Kumanis, Sumatra, Febr. 1914, E. Jacobson. 1 ♀ Lampong, Sumatra, 1891. 1 ♀ Rhio-Lingga, 1895, A. L. van Hasselt. 2 ♀♀ Pulau Tudjuh, Natuna Islands, 1895, A. L. van Hasselt. 1 ♀ Kalianda, Telokbetong, S. Sumatra, 1928, Bedier de Prairie. 1 ♀ Wai Lima, Lampong, S. Sumatra, 11-12-'21, Karny & Siebers.

A. 1 ♂ Deli, Sumatra, Waldeck. 1 ♂ Java (patria falsa?).

B. 2 ♂♂ Sibolangit, E. Sumatra, 1911. 1 ♂ Sibolangit, E. Sumatra, 1912. 1 ♀ Sibolangit, E. Sumatra, 1910. 1 ♀ E. Sumatra, 1911. 1 ♀ Sibolangit, E. Sumatra, 1912.

**Faunis kirata** (Nicév., 1891)

L. 1 ♂ Kumanis, Sumatra, March 1914, E. Jacobson. 1 ♂ Toba Lake, Sumatra, Dr. B. Hagen. 1 ♂ Kalianda, Telokbetong, S. Sumatra, 1928, Bedier de Prairie. 1 ♀ Puntian, Kumanis, Sumatra, March 1915, E. Jacobson. 1 ♀ Balun, Sumatra, 1914, E. Jacobson.

A. 1 ♂ Indo Australia, Coll. A. J. Buis.

**Faunis eumeus eumeus** (Drury, 1770)

- L. 1 ♂ China, Calkoen. 1 ♂ China.  
 G. 4 ♂♂ Hong Kong.  
 A. 4 ♂♂ Singapore or Pinang, 1898, Lusink (patria falsa?).

**Faunis assamus** (Westw., 1858)

- L. 1 ♂ Assam, Dr. Staudinger. 1 ♀ Assam, Dr. Staudinger. 1 ♀ Assam, Heijer.  
 G. 1 ♂ Khasia Hills. 1 ♀ Assam.

**Faunis aerope aerope** (Leech, 1890)

- L. 1 ♂ China, Sept., Dr. Staudinger. 1 ♂ China, Sept., Dr. Staudinger.  
 J. 1 ♀ Omei Shan, W. China, 1920.  
 G. 1 ♂ China.

**Faunis aerope excelsus** (Fruhst., 1901)

- J. 1 ♀ Than-Moi, N. Tonkin, July.

**Faunis faunula** (Westw., 1849)

- L. 1 ♂ 1889, Heine. 1 ♂ Perak, Malay Peninsula, 1891. 1 ♂ Malay Peninsula.  
 J. 1 ♂ Perak, Malay Peninsula.

9. Genus **Xanthotaenia** Westw., 1858**Xanthotaenia busiris sadija** Fruhst., 1911

L. 4 ♂♂ Andalas, Sumatra, May 1914, E. Jacobson. 1 ♂ Suban Ajam, Sumatra, July 1916, E. Jacobson. 1 ♂ Air Tarbit, Sumatra, Dec. 1913, E. Jacobson. 1 ♂ Njuruk Dempu, 1400 m, Aug. 1916, E. Jacobson. 1 ♂ Deli, Sumatra, Schagen v. Leeuwen. 1 ♂ Tandjong Morawa, Serdang, N. E. Sumatra, Dr. B. Hagen. 1 ♂ Toba Lake, Sumatra, Dr. B. Hagen. 1 ♂ Rembu near Bugi Tingi, Padang, 1904, J. Menzel. 1 ♂ Lampong, Sumatra, 1891. 1 ♂ Ladong Donok, Sept. 1909, Abdul Rachman. 3 ♂♂ Kalianda, Telokbetong, S. Sumatra, 1928, Bedier de Prairie. 1 ♂ Wai Lima, Lampong, S. Sumatra, 11-12-'21, Karny & Siebers. 1 ♀ Tandjong Morawa, Serdang, N. E. Sumatra, Dr. B. Hagen. 1 ♀ Tapanuli, Sumatra, 1895, A. L. van Hasselt. 1 ♀ Pajakumbuh 1906, H. Royer. 1 ♀ Kalianda, Telokbetong, S. Sumatra, 1928, Bedier de Prairie.

A. 2 ♂♂ Andalas, Sumatra, May 1914, E. Jacobson. 2 ♀♀ Deli, Sumatra, Waldeck. 1 ♀ without data.

B. 1 ♂ Sibolangit, E. Sumatra, 1911. 1 ♂ Si Matorkis, W. Sumatra,

1912. 1 ♂ Lubu Sikaping, W. Sumatra, 1916. 1 ♀ Sibolangit, 1911. 2 ♀♀ Sibolangit, E. Sumatra, 1912.

**Xanthotaenia busiris obscura** Butl., 1883

L. 1 ♂ Nias, Coll. Piepers. 1 ♂ Nias, 1890, J. D. Pasteur. 1 ♂ Nias, 1892, J. D. Pasteur. 1 ♂ Nias, Ribbe. 3 ♀♀ Nias, 1890, J. D. Pasteur. 1 ♀ Nias, 1892, J. D. Pasteur. 1 ♀ Nias, 1892.

A. 1 ♂ Nias, 1857. 1 ♂ without data.

B. 2 ♂♂ N. Nias, 1908. 1 ♀ Telok Dalam, Nias, 1911.

**Xanthotaenia busiris burra** Stich., 1906

L. 1 ♂ Mahakkam, Borneo expedition, 1894, Dr. Nieuwenhuis. 1 ♂ W. Borneo. 1 ♂ Java (patria falsa?), Blume. 1 ♂ Central E. Borneo, 27-8-'25, H. C. Siebers. 2 ♂♂ without data. 1 ♀ S. Borneo. 1 ♀ N. Borneo. 2 ♀♀ Central E. Borneo, 1925, H. C. Siebers.

J. 1 ♂ N. Borneo. 1 ♀ N. Borneo.

G. 1 ♂ Borneo. 2 ♀♀ Borneo.

A. 1 ♂ Borneo. 1 ♀ Borneo.

B. 1 ♂ Borneo, 1912.

10. Genus **Taenaris** Jac. Hübn., 1818 & 1827

**Taenaris horsfieldii horsfieldii** (Swains., 1820-1821)

L. 2 ♂♂ Java, Reinwardt. 1 ♂ Java, Coll. De Graaf. 1 ♂ W. Java, v. d. H. 1 ♂ W. Java, Riemel. 1 ♂ Wynkoops Bay, W. Java, 14 April, Coll. Piepers and Snellen. 1 ♂ Mt. Gedeh, 4000', W. Java, 1892, H. Fruhstorfer. 1 ♂ S. Java, 1500', 1891, H. Fruhstorfer. 1 ♂ S. Java, 1500', 1892, H. Fruhstorfer. 1 ♂ Mt. Tengger, 4000', 1890, H. Fruhstorfer. 1 ♀ Java, Reinwardt. 1 ♀ Gunung Bundur, W. Java, 1893. 1 ♀ Mt. Gedeh, W. Java, 1894. 1 ♀ Wynkoops Bay, W. Java, May 1891. 1 ♀ Mt. Gedeh, 4000', Aug. 1892, H. Fruhstorfer. 1 ♀ S. Java, 1500', 1891, H. Fruhstorfer. 1 ♀ Mt. Tengger, 4000', 1890, H. Fruhstorfer.

J. 3 ♂♂ W. Java. 1 ♂ Sukabumi, W. Java. 2 ♂♂ Wynkoops Bay, W. Java, Oct. 1919.

G. 2 ♂♂ Java.

A. 1 ♂ Sukabumi, Java. 1 ♂ Java, Coll. A. J. Buis. 1 ♂ without data.

B. 1 ♂ Java, 1907. 1 ♂ W. Java, 1912. 1 ♂ Pelokosan, Java, June 1919. 1 ♂ Java, 1920. 1 ♀ Java, 1920. 1 ♀ Java, 1922. 1 ♀ Java, 1927.

Forma *morosa* Stich., 1906

A. 3 ♂♂ without data.

**Taenaris horsfieldii occulta** (Gr. Smith, 1889)

L. 1 ♂ W. Borneo, Oct. 1892. 1 ♂ W. Borneo, 1893. 1 ♂ Central E. Borneo, 21-9-'25, H. C. Siebers.

G. 1 ♂ W. Borneo.

A. 1 ♀ Borneo, Muller.

**Taenaris urania urania** (L., 1758)

L. 1 ♂ Amboina. 1 ♂ Amboina, 1911. 3 ♂♂ Amboina, Perné. 1 ♂ Moluccas, 1911, D. den Hengst. 1 ♂ Amboina, Macklot. 1 ♂ Saparua, Moluccas. 1 ♂ without data. 1 ♂ Lombok, v. W. 1 ♂ Amboina, Buru expedition, 7 November. 1 ♀ Bachan, Moluccas, v. A. 2 ♀♀ 1909, Coll. Royer.

J. 2 ♂♂ Amboina. 4 ♀♀ Amboina.

G. 1 ♂ Amboina.

A. 3 ♂♂ Amboina. 1 ♂ Amboina, Forsten. 4 ♂♂ without data. 3 ♀♀ Amboina. 1 ♀ Amboina, Snellen. 1 ♀ Geelvink- and Wandammen Bay, 1920-1922, Ter Poorten (patria falsa?). 7 ♀♀ without data.

B. 1 ♂ Amboina, 1905. 1 ♀ Amboina, 1912. 1 ♀ Amboina, 1915.

*Forma jairus* (Cram., 1775)

L. 1 ♂ Amboina, Perné.

G. 1 ♀ Amboina.

*Forma nox* (Kirb., 1901)

L. 1 ♂ 1909, Coll. Royer. 1 ♂ Amboina, 1911. 1 ♂ Saparua, 1905, H. Fruhstorfer. 1 ♂ Halmahera, 1898. 1 ♂ Sumatra (patria falsa?), Ludeking. 1 ♀ Amboina, Macklot. 1 ♀ Saparua, 1905, H. Fruhstorfer. 1 ♀ Saparua, Moluccas.

J. 1 ♂ Amboina.

A. 1 ♂ Amboina. 1 ♂ without data. 1 ♀ Amboina.

B. 1 ♂ Amboina, 1912. 2 ♀♀ Amboina 1912.

**Taenaris urania pandemos** Fruhst., 1911

L. 2 ♂♂ Serang, Ludeking. 1 ♂ Serang, Van Gelder. 1 ♀ Waihai, Serang, Moens. 1 ♀ without data.

A. 1 ♂ Serang, Ludeking. 1 ♀ Serang, 1887.

**Taenaris urania hollandi** (Fruhst., 1904)

L. These specimens have been collected during the Buru expedition 1921-1922 except the last ♂. 5 ♂♂ Fakal, Sept. 1921. 4 ♂♂ Fakal, Oct. 1921. 1 ♂ Fakal, 13-10-'21. 1 ♂ Leksula, April 1921. 2 ♂♂ Leksula,

Sept. 1921. 1 ♂ Leksula, Jan. 1921. 1 ♂ Elm, June 1921. 2 ♂♂ Elm, Sept. 1921. 1 ♂ Nal Besi, June 1921. 1 ♂ Lililit, 12-4-'21. 1 ♂ without data. 5 ♀♀ Fakal, Sept. 1921, one specimen with doubled ocelli. 1 ♀ Leksula, Dec. 1921. 1 ♀ Nal Besi, June 1921. 1 ♀ Nal Besi, July 1921. 1 ♀ Wa Eno, April 1921. 1 ♀ Wa Tawa, Sept. 1921, with doubled anal ocelli. 1 ♀ Bah'lalé boom, 22-1-'22. 1 ♀ Bingis Waen 25-11-'21.

J. 1 ♂ Buru, 4-1-'21. 1 ♂ Buru, 5-1-'21. 1 ♂ Buru, 7-1-'21. 1 ♂ Buru, Wa Katin, January-February 1922. 1 ♀ Buru, 16-12-'21. 1 ♀ Buru, 17-12-'21.

B. 1 ♂ Buru, 1920. 1 ♂ Buru, 1921. 1 ♀ Buru, 1921.

**Taenaris diana diana** (Butl., 1870)

L. 1 ♂ Bachan, Bernstein. 1 ♀ Bachan, 1890, Van Gelder.

J. 1 ♂ Bachan. 1 ♀ Bachan.

B. 2 ♂♂ Halmahera, 1922. 1 ♂ Halmahera, 1924. 1 ♂ Halmahera. 1 ♀ Halmahera, 1922. 1 ♀ Halmahera, 1925. 2 ♀♀ Bachan, 1905.

**Taenaris diana diadema** (Fruhst., 1903)

L. 1 ♂ Type, Obi, 1905, H. Fruhstorfer.

M. 1 ♂ Obi, H. Fruhstorfer. 1 ♀ Obi, H. Fruhstorfer.

**Taenaris diana leto** Fruhst., 1905

L. 1 ♂ Galela, Halmahera, Bernstein. 1 ♂ N. E. Halmahera, Bernstein. 1 ♀ N. Halmahera, Bernstein.

J. 1 ♂ Doruma, Halmahera.

B. 4 ♂♂ Halmahera, 1922. 3 ♂♂ Halmahera, 1926. 3 ♂♂ Halmahera. 6 ♀♀ Halmahera, 1922. 1 ♀ Halmahera, 1924. 3 ♀♀ Halmahera, 1925. 1 ♀ Halmahera, 1926.

Forma *pseudodomitilla* forma nov. (Pl. X figs. 1, 2)

B. 1 ♀ Halmahera, 1922, with two ocelli in a common yellow ring in the anal angle on the upper side of the hind wing.

**Taenaris domitilla domitilla** (Hew., 1861)

A. 1 ♂ N. E. Halmahera. 2 ♂♂ Tobelo, Halmahera, M. J. v. Diejen don., 1933. 2 ♀♀ Tobelo, Halmahera, M. J. v. Diejen don., 1933.

B. 1 ♂ Halmahera, 1908. 7 ♂♂ Halmahera, 1922. 6 ♀♀ Halmahera, 1922. 2 ♀♀ Halmahera, 1925. 1 ♀ Halmahera.

**Taenaris domitilla diops** (Snell. v. Voll., 1863)

L. 1 ♂ Morotai, Bernstein. 1 ♂ N. Halmahera, Bernstein. 1 ♂ Halmahera, Mus. L. B. 1 ♀ Kaju, Bernstein. 1 ♀ N. Halmahera, Bernstein. 1 ♀ Halmahera, 1898. 1 ♀ Halmahera, 1899.

J. 1 ♂ Doruma, Halmahera, 1908. 1 ♀ Doruma, Halmahera, 1908. 1 ♀ Bachan.

B. 2 ♂♂ Halmahera, 1922. 1 ♂ Halmahera, 1925. 3 ♀♀ Halmahera, 1922. 2 ♀♀ Halmahera, 1925.

**Taenaris domitilla agrippa** (Fruhst., 1903)

L. 2 ♂♂ Obi, H. Fruhstorfer. 3 ♀♀ Obi, H. Fruhstorfer.

G. 1 ♂ Obi.

M. 1 ♂ Obi, H. Fruhstorfer. 1 ♂ Obi, Ribbe. 1 ♀ Obi, H. Fruhstorfer.

B. 2 ♂♂ Obi, 1920. 2 ♀♀ Obi, 1920.

**Taenaris onolaus onolaus** (Kirsch, 1877)

L. 2 ♂♂ Ron Island, Geelvink Bay, Dutch New Guinea, Coll. Jurriaanse.  
1 ♂ Manokwari, N. Dutch New Guinea, Nov. 1909, Dr. H. W. van der Weele and Van Gelder. 1 ♀ Ron Island, Geelvink Bay, Dutch New Guinea, Coll. Jurriaanse.

B. 2 ♂♂ Wandammen Mountains, New Guinea, 1000 m, 1921. 1 ♀ Wandammen Mountains, New Guinea, 1000 m, 1921.

**Taenaris onolaus saturator** (Fruhst., 1904)

L. 1 ♂ Fakfak, S. W. Dutch New Guinea, 20-4-'16, Baud.

J. 2 ♂♂ Yule Islands, Gulf of Papua.

G. 1 ♂ Papua, Heijne.

**Taenaris honrathi honrathi** (Stauding., 1886)

M. 1 ♂ Waigeu, H. Fruhstorfer.

**Taenaris honrathi sekarensis** (Stauding., 1887)

L. 1 ♂ Nusaulan, S. W. New Guinea, 3-2-'07, Palmer v. d. Broek. 3 ♂♂ Kasuri, 1907, Palmer v. d. Broek. 1 ♂ Wermari, S. W. New Guinea, 18-4-'07, Palmer v. d. Broek. 1 ♂ Mandafa, S. W. New Guinea, 1907, Palmer v. d. Broek. 1 ♂ Pionierbivouac, Memberamo river, W. C. van Heurn. 1 ♂ New Guinea. 1 ♀ Fakfak, S. W. New Guinea, 1907, Palmer v. d. Broek. 1 ♀ Kasuri, S. W. New Guinea, 1907, Palmer v. d. Broek.

A. 1 ♀ Tanah Merah Bay, 10-6-'07, 1st New Guinea expedition.

**Taenaris honrathi ritsemæ** (Fruhst., 1904)

L. 1 ♂ Kloofbivouac, 7-12-'12, 3rd New Guinea expedition. 1 ♂ Kloofbivouac, 4-3-'13, 3rd New Guinea expedition. 1 ♂ Kloofbivouac, 21-3-'13, 3rd New Guinea expedition. 1 ♂ Kloofbivouac, 2-12-'13, 3rd New Guinea expedition, De Beaufort. 1 ♀ Pionierbivouac, Dutch New Guinea, 20 Dec.

1920, W. C. van Heurn. 1 ♀ Pionierbivouac, Dutch New Guinea, July 1920, W. C. van Heurn. Both with a white spot at the base of the upper side of the fore wing.

J. 1 ♀ Windesi, N. Dutch New Guinea.

G. 1 ♀ New Guinea.

**Taenaris honrathi rebeli** (Fruhst., 1904)

L. 1 ♂ Type, New Guinea, 1905, H. Fruhstorfer.

G. 1 ♂ Dutch New Guinea. 3 ♂♂ New Guinea, 2 ♂♂ without data.

**Taenaris phorcac phorcac** (Westw., 1858)

L. 1 ♂ Durville, Otaheiti (Type *Drusilla anableps* Snell. v. Voll., 1860).  
1 ♀ Nusa, New Ireland, Museum Dresden. 1 ♀ Mioko, Museum Godeffroy, 1886.

**Taenaris phorcac uranus** (Stauding., 1887)

J. 1 ♂ Rebor, Bismarck Archipelago, 1909. 1 ♀ New Britain.

G. 1 ♂ Duke of York Island. 1 ♀ Duke of York Island.

**Taenaris phorcac atesta** (Rebel, 1895)

J. 5 ♂♂ Choiseul, Solomon Islands. 1 ♀ Choiseul, Solomon Islands.  
2 ♀♀ Rendova, Solomon Islands, 1918.

A. 1 ♂ Bougainville. 2 ♀♀ Bougainville.

Strand (Int. Ent. Zeit., vol. 8, p. 104, 1914) describes the forma *bougainvilleana* ♀ from Bougainville. In the Collection Jurriaanse there are, besides the 5 ♂♂ and the 3 ♀♀ mentioned above, 3 ♀♀ and 1 ♂ from Bougainville. Strand's description does not agree with these specimens. They are as dark as the subspecies *atesta* (Rebel) from the other Solomon Islands. The white spot on the upper side of the fore wing is bright white. The anal ocelli are quite clearly visible on the upper side of the hind wing. Under side as the subspecies *atesta* (Rebel) from the other Solomon Islands.

**Taenaris scylla** (Stauding., 1887)

B. 1 ♂ Biak, Schouten Island, 1909. 1 ♂ Biak, Schouten Island, 1910.

**Taenaris macrops macrops** (Feld., 1860)

L. 1 ♂ Bachan, 1891. 1 ♂ Bachan, 1897. 1 ♂ Bachan, 1890, Van Gelder. 2 ♂♂ Bachan, 1907, Coll. V. d. Weele. 1 ♂ Bachan, Bernstein. 1 ♂ N. Halmahera, Bernstein, with three anal ocelli in a common yellow border. 1 ♂ Halmahera, 1 ♂ Morotai, Bernstein. 1 ♂ Dodenga, Bernstein. 1 ♂ Serang, Coll. Piepers. 1 ♂ Serang, Ludeking. In these two specimens

from Serang the anal ocelli lie exactly halfway between the cell and the distal margin. 1 ♀ Bachan, 1907, Coll. V. d. Weele. 1 ♀ Bachan, Piepers. 1 ♀ Bachan, Bernstein. 1 ♀ Morotai, Bernstein. 1 ♀ Halmahera, 1898. 1 ♀ Sumatra, Ludeking (*patria falsa?*).

J. 2 ♂♂ Bachan. 3 ♀♀ Bachan.

G. 2 ♂♂ without data.

A. 1 ♂ Bachan, Bernstein. 1 ♂ Indo Australia, Coll. A. J. Buis. 1 ♂ without data. 2 ♂♂ Tobelo, Halmahera, M. J. van Diejen don., 1933.

B. 2 ♂♂ Bachan, 1908. 1 ♂ Halmahera, 1905. 2 ♂♂ Halmahera, 1921. 1 ♂ Halmahera, 1922. 1 ♂ Halmahera, 1928. 1 ♀ Bachan, 1908. 3 ♀♀ Halmahera, 1921. 3 ♀♀ Halmahera.

**Taenaris macrops macropina** (Fruhst., 1904)

L. 1 ♂ Obi, Bernstein. 2 ♀♀ Obi.

A. 1 ♂ Moluccas, 1899, Van Velsen.

B. 1 ♀ Obi, 1920. 1 ♀ Obi, 1921.

**Taenaris macrops ternatana** Fruhst., 1909

L. 3 ♂♂ Ternate, Bernstein. 1 ♀ Tidore, Bernstein.

Fruhstorfer gives only the description of the ♀♀. The 3 ♂♂ in the Leiden Museum do not differ distinctly from subsp. *macropina* (Fruhst.).

**Taenaris selene selene** (Westw., 1851)

L. These specimens have been collected during the Buru expedition (1921-1922). 4 ♂♂ Mugei Waen, March 1922. 1 ♂ Mugei Waen, 23-3-'21. 1 ♂ Mefa, Nov. 1921. 2 ♂♂ Wa Katin, April 1921. 2 ♂♂ Wa Katin, March 1921. 1 ♂ Wa Katin, Febr. 1921. 3 ♂♂ Nal Besi, May 1921. 1 ♂ Nal Besi, July 1921. 1 ♂ Wa Rhen, March 1921. 1 ♂ Wa Eno, April 1921. 2 ♂♂ Rana, May 1921. 1 ♂ Leksula, June 1921. 1 ♂ Ehu, Sept. 1921. 2 ♀♀ Mugei Waen, March 1921. 1 ♀ Mugei Waen, 23-3-'21. 1 ♀ Mefa, Nov. 1921. 2 ♀♀ Leksula, March 1921. 4 ♀♀ Leksula, April 1921. 2 ♀♀ Leksula, Aug. 1921. 1 ♀ Leksula, Nov. 1921. 2 ♀♀ Ehu, Sept. 1921. 1 ♀ Eu Biloru, Febr. 1921. 1 ♀ Wa Tawa, Sept. 1921. 1 ♀ Wa Tawa, Oct. 1921. 1 ♀ Wamsist, Oct. 1921. 1 ♀ Wa Temoen, 17-2-'22. 2 ♀♀ without data.

J. 1 ♂ Wa Katin, Buru, 25 Aug. 5 ♂♂ Wa Katin, Buru, Jan. 1922. 1 ♂ Buru, 16-12-'20. 1 ♂ Buru, 21-12-'20. 3 ♂♂ Buru, 23-12-'20. 1 ♂ Buru, Dec. 1920. 1 ♂ Buru, 29-12-'20. 1 ♂ Buru, 5-1-'21. 1 ♀ Wa Katin, Buru, Jan. 1922.

B. 1 ♂ Buru, 1920. 3 ♂♂ Buru, 1921. 1 ♀ Buru, 1920. 1 ♀ Buru, 1921.



**Taenaris selene gigas** (Stauding., 1887)

L. 1 ♀ Serang.

**Taenaris catops catops** (Westw., 1851)

L. 2 ♂♂ Trangan, Aru Islands, Rosenberg. 2 ♂♂ Maikur, Aru Islands, Rosenberg. 1 ♂ Aru Islands, Rosenberg. 1 ♂ Aru Islands, 1909, A. Tamson. 6 ♂♂ Aru Islands, 1908, A. Tamson. 2 ♂♂ Aru Islands, 1905. 1 ♂ Aru Islands. 1 ♀ Dobo, Aru Islands, 1902, H. J. Gilhuys.

J. 1 ♂ Aru Islands.

G. 1 ♂ Aru Islands.

A. 2 ♂♂ Aru Islands.

**Taenaris catops jathrippa** Fruhst., 1916

L. 1 ♂ Salawati.

**Taenaris catops selenides** (Stauding., 1887)

L. 1 ♂ Waigeu, Bernstein. 1 ♀ Waigeu, H. Fruhstorfer.

**Taenaris catops laretta** (Fruhst., 1905)

L. 1 ♂ Fakfak, New Guinea, Palmer v. d. Broek. 2 ♂♂ N. W. Guinea, 1912-1913, J. C. Baggelaar. 2 ♂♂ Manokwari, N. New Guinea, Nov.-Dec. 1909, Dr. H. W. v. d. Weele. 1 ♂ New Guinea. 1 ♂ Doreh Bay, 1907, 1st New Guinea expedition. 1 ♂ Sabang, 27-6-'07, 1st New Guinea expedition. 1 ♂ Bivak Island, 27-5-'07, 1st New Guinea expedition. 1 ♂ Etna Bay, New Guinea, 1904-1905, Dr. Koch. 5 ♂♂ Ron Island, Dutch New Guinea. 1 ♀ Fakfak, S. W. New Guinea, 1907, Palmer v. d. Broek. 2 ♀♀ Fakfak, 20-4-'16, Baud. 1 ♀ Wendesi, 25-4-'07, 1st New Guinea expedition. 1 ♀ Sentani, New Guinea, 4-4-'07, 1st New Guinea expedition. 2 ♀♀ N. W. New Guinea, 1912-1913, J. C. Baggelaar, 1 ♀ Manokwari, New Guinea, Nov.-Dec. 1909, Dr. H. W. v. d. Weele. 1 ♀ Manokwari, Doreh Bay, Dutch New Guinea, 1912, Ten Klooster.

J. 1 ♀ Wendesi, Dutch New Guinea, 1907.

G. 1 ♂ Dutch New Guinea.

A. 3 ♂♂ N. W. New Guinea, J. C. Baggelaar, 1912-1913. 1 ♀ N. W. New Guinea, J. C. Baggelaar, 1912-1913.

B. 1 ♂ Fakfak, New Guinea, 1920. 4 ♂♂ Fakfak, New Guinea, 1921. 1 ♂ Mici, New Guinea, 1925. 1 ♂ Doreh, New Guinea, 1910. 2 ♀♀ Fakfak, New Guinea, 1921. 3 ♀♀ Geelvink Bay, New Guinea, 1921. 1 ♀ Mici, New Guinea, 1925.

**Taenaris catops catanea** (Fruhst., 1904)

L. 1 ♂ Sekru, New Guinea, Schädler. 2 ♂♂ New Guinea. 2 ♂♂ Kapaur, New Guinea, Doherty, Coll. H. Fruhstorfer. 1 ♂ 27-12-'12, 3rd New Guinea expedition, De Beaufort. 1 ♂ Kloofbivouac, 11-2-'13, 3rd New Guinea expedition. 1 ♂ Kloofbivouac, 26-2-'13, 3rd New Guinea expedition. 1 ♂ Kasuri, S. W. New Guinea, 6-5-'07, Palmer v. d. Broek. 1 ♂ Kasuri, S. W. New Guinea, 1907, Palmer v. d. Broek. 1 ♀ Van Weelscamp, 4-6-'07, 1st New Guinea expedition. 1 ♀ Sabang, 14-7-'07, 1st New Guinea expedition. 2 ♀♀ New Guinea, Macklot. 3 ♀♀ New Guinea, Roijer. 1 ♀ Wamaru, S. W. New Guinea, 1907, Palmer v. d. Broek. 1 ♀ Kloofbivouac, 5-12-'12, 3rd New Guinea expedition. 1 ♀ 27-12-'12, 3rd New Guinea expedition. 1 ♀ Kloofbivouac, 18-1-'13, 3rd New Guinea expedition. 1 ♀ Kloofbivouac, 23-1-'13, 3rd New Guinea expedition. 1 ♀ Kloofbivouac, 8-3-'13, 3rd New Guinea expedition.

A. 1 ♂ Bivak Island, 24-5-'07, 1st New Guinea expedition, 1 ♂ Sabang, 13-6-'07, 1st New Guinea expedition. 1 ♂ Sabang, 25-6-'07, 1st New Guinea expedition. 1 ♂ Noord River, 8-9-'09, 2nd New Guinea expedition. 1 ♂ 3rd New Guinea expedition, 1912-1913. 1 ♀ Noord River, 7-9-'09, 2nd New Guinea expedition. 1 ♀ 3rd New Guinea expedition, 1912-1913.

**Taenaris catops galaecia** Fruhst., 1914

J. 1 ♂ Eilanden River, Dutch New Guinea. 1 ♀ Eilanden River, Dutch New Guinea.

**Taenaris catops westwoodi** (Stauding., 1893)

L. 3 ♂♂ Astrolabe Bay, E. New Guinea, V. d. Poll. 2 ♂♂ New Guinea, 1905, H. Fruhstorfer. 1 ♂ Finschhafen, New Guinea, 1891, H. Fruhstorfer. 2 ♂♂ Bongu, New Guinea, H. Fruhstorfer. 1 ♂ 1st and 2nd New Guinea expedition, 1907 and 1909-1910. 1 ♂ Sentani, 5-4-'07, 1st New Guinea expedition. 1 ♂ Sentani, 8-4-'07, 1st New Guinea expedition. 27-4-'07, 1st New Guinea expedition. 1 ♂ Tanah Merah Bay, 10-4-'07, 1st New Guinea expedition. 1 ♂ Tanah Merah Bay, 10-4-'07, 1st New Guinea expedition. 1 ♂ Mosso, 10-5-'07, 1st New Guinea expedition. 1 ♂ New Guinea. 3 ♂♂ Pionierbivouac, N. New Guinea, July 1920, W. C. v. Heurn. 1 ♂ Pionierbivouac, N. New Guinea, Aug. 1920, W. C. v. Heurn. 1 ♂ Pionierbivouac, N. New Guinea, 7-1-'21, W. C. v. Heurn. 3 ♂♂ Prauwenbivouac, N. New Guinea, Nov. 1920, W. C. v. Heurn. 4 ♂♂ Prauwenbivouac, N. New Guinea, Nov. 1920, W. C. v. Heurn, in these four specimens the wings are dirty white and the ocelli have a broad brown border. 1 ♀ Astrolabe Bay, E. New Guinea, V. d. Poll.

2 ♀♀ New Guinea, H. Fruhstorfer. 1 ♀ Sentani, 27-6-'07, 1st New Guinea expedition. 1 ♀ Tanah Merah Bay, 19-6-'07, 1st New Guinea expedition. 1 ♀ Tanah Merah Bay, 7-7-'07, 1st New Guinea expedition. 1 ♀ Lentamina, 28-3-'07, 1st New Guinea expedition. 1 ♀ Meto Deli, 3-5-'07, 1st New Guinea expedition. 1 ♀ Pionierbivouac, N. New Guinea, July 1920, W. C. van Heurn. 1 ♀ Pionierbivouac, N. New Guinea, Nov. 1920, W. C. v. Heurn. 1 ♀ Pionierbivouac, N. New Guinea, 14-12-'20, W. C. v. Heurn. 1 ♀ Pionierbivouac, N. New Guinea, 7-1-'21, W. C. v. Heurn. 3 ♀♀ Prauwenbivouac, N. New Guinea, Nov. 1920, W. C. v. Heurn.

J. 2 ♂♂ New Guinea. 1 ♂ Wendesi, 1909, N. New Guinea. 1 ♂ Br. New Guinea. 1 ♀ Br. New Guinea.

G. 3 ♂♂ New Guinea. 1 ♂ without data.

M. 1 ♂ New Guinea, Brauner. 1 ♀ New Guinea, Brauner.

B. 1 ♂ Sentani, 20-3-'07, 1st New Guinea expedition. 2 ♂♂ Tanah Merah Bay, 10-4-'07, 1st New Guinea expedition. 1 ♂ Tanah Merah Bay, 20-4-'07, 1st New Guinea expedition. 1 ♂ Tanah Merah Bay, 10-6-'07, 1st New Guinea expedition. 1 ♂ Mosso, 10-5-'07, 1st New Guinea expedition. 1 ♂ without data. 1 ♀ Tanah Merah Bay, 7-4-'07, 1st New Guinea expedition. 2 ♀♀ Tanah Merah Bay, 10-6-'07, 1st New Guinea expedition. 1 ♀ Sentani, 2-7-'07, 1st New Guinea expedition. 1 ♀ 1st and 2nd New Guinea expedition, 1907 and 1909-1910.

#### **Taenaris catops vulcania** (Fruhst.)

J. 1 ♂ Vulcan Island, N. E. New Guinea. 4 ♀♀ Vulcan Island, N. E. New Guinea.

#### **Taenaris catops kumusii** nov. subsp. (Pl. IX figs. 3, 4)

♂ Upper side bright white. Fore wing, margin narrow, blackish brown. Distally this margin runs halfway between the anterior and posterior radiales. Between costalis and subcostalis a dirty white stripe, which runs nearly to apex. Between subcostalis and anterior radialis partly white, radiales blackish brown. Hind wing, faintly tinged with yellow at base. The very narrow, blackish brown margin distally runs to the second medium nervure. Under side. Fore wing as the upper side. Hind wing, the anal ocelli smaller than the apical, with broad yellow ring. Apical ocelli partly in the blackish brown margin, further as the upper side.

J. 1 ♂ Holotype, Kumusi River, Br. New Guinea, 1918. 2 ♂♂ Kumusi River, Br. New Guinea, 1918.

**Taenaris catops adriana** (Fruhst., 1904)

L. 1 ♂ Goodenough Island, Coll. Piepers and Snellen.

**Taenaris catops fimbriata** (Kirby, 1889)

L. 1 ♂ Woodlark Island, H. Fruhstorfer. 1 ♀ Woodlark Island, New Guinea, Coll. Snellen and Piepers.

**Taenaris catops appina** (Fruhst., 1904)

J. 2 ♂♂ Milne Bay, Br. New Guinea, 1918.

**Taenaris catops turdula** Fruhst., 1914.

J. 1 ♂ Yule Island, Br. New Guinea.

**Taenaris catops nicasius** (Fruhst., 1905)

J. 1 ♂ Wendesi, Dutch New Guinea, May 1908. 1 ♂ Wendesi, N. Dutch New Guinea.

**Taenaris taenia annella** Stich., 1906

L. 1 ♂ Prauwenbivouac, Nov. 1920, W. C. van Heurn.

A. 1 ♂ Fakfak 1912. 1 ♂ N. W. New Guinea, 1912-1913, J. C. Bagelaar.

**Taenaris rothschildi rothschildi** (Gr. Smith, 1894)

Forma *pelagia* (Fruhst., 1904)

L. 1 ♂ Prauwenbivouac, N. New Guinea, Nov. 1920, W. C. v. Heurn.  
 1 ♂ Prauwenbivouac, N. New Guinea, Nov. 1920, W. C. v. Heurn, upper side of the hindwing dirty white. 1 ♂ Prauwenbivouac, N. New Guinea, Nov. 1920, W. C. v. Heurn, upper- and under side of the hindwing with a narrow brown margin. 1 ♂ Prauwenbivouac, N. New Guinea, Nov. 1920, W. C. v. Heurn, upper- and underside of the hindwing blackish. 1 ♀ Pionierbivouac, N. New Guinea, 7-1-'21, W. C. v. Heurn, upper side of the hindwing dirty white.

**Taenaris rothschildi wahnesi** (Heller, 1894)

L. 1 ♂ Astrolabe Bay, E. New Guinea, V. d. Poll. 1 ♂ New Guinea.

J. 1 ♂ New Guinea.

G. 2 ♂♂ New Guinea. 1 ♀ New Guinea.

A. 1 ♂ Indo Australia, Coll. A. J. Buis. 1 ♂ Mosso, 20-5-'07, 1st New Guinea expedition.

M. 1 ♂ New Guinea, Schulz.

*Forma candida* (Fruhst., 1904)

L. 2 ♂♂ Friedrich Wilhelmshafen, New Guinea, H. Fruhstorfer.

**Taenaris rothschildi ansuna** (Fruhst., 1904)

L. 2 ♂♂ Ron Island, Dutch New Guinea.

**Taenaris dioptrica dioptrica** (Snell. v. Voll., 1860)

L. 1 ♂ Type, New Guinea, Macklot. 1 ♂ Coll. Royer, 1909. 3 ♂♂ Ron Island, Dutch New Guinea. 1 ♀ Van Weelscamp, 11-6-'07, 1st New Guinea expedition.

B. 1 ♂ Mici, 1925.

*Forma licinia* (Fruhst., 1904)

L. 1 ♂ Manokwari, Doreh Bay, Dutch New Guinea, 1912, Ten Klooster.

**Taenaris dioptrica timesias** (Kirsch, 1877)

B. 1 ♂ Geelvink Bay, 1921. 1 ♀ Geelvink Bay, 1921.

**Taenaris dioptrica amitaba** (Fruhst., 1904)

L. 1 ♂ Waigeu.

M. 1 ♂ Waigeu, H. Fruhstorfer.

**Taenaris dioptrica onesimides** (Fruhst., 1904)

L. 1 ♂ New Guinea. 1 ♂ N. W. New Guinea, 1912-1913, J. C. Bagge-  
laar. 1 ♂ Van Weelscamp, 10-6-'07, 1st New Guinea expedition. 1 ♂  
23-5-'07, 1st New Guinea expedition. The last two specimens are inter-  
mediate forms to the subsp. *amitaba* (Fruhst.). 2 ♂♂ Fakfak, Mc Cluer  
Gulf, Palmer v. d. Broek.

G. 1 ♂ New Guinea.

B. 1 ♂ Fakfak, 1912. 2 ♂♂ Fakfak, 1921. 1 ♂ Geelvink- and Wan-  
dammen Bay, 1920-1921, C. ter Poorten. 1 ♀ Fakfak, 1912. 1 ♀ Fakfak,  
1921. 1 ♀ Meos War, 1906.

**Taenaris cyclops** (Stauding., 1893)*Forma agapetha* (Fruhst., 1904)

G. 1 ♀ New Guinea, with a large white subapical region on the upper  
and under side of the fore wing.

**Taenaris chionides chionides** (Godm. & Salv., 1880)

G. 1 ♂ D. New Guinea. 1 ♀ New Guinea.

**Taenaris chionides kubaryi** (Stauding., 1894)

M. 1 ♂ New Guinea, W. Niepelt. 1 ♀ New Guinea, W. Niepelt.

**Taenaris fergussonia** (Fruhst., 1904) (fig. 1)

L. 1 ♂ Type, Fergusson Islands, D'Entrecostaux Islands, New Guinea, 1905, H. Fruhstorfer.

In the literature we usually find Fruhstorfer's *Drusilla fergussonia* from the Fergusson Islands included into the species *Taenaris myops* as

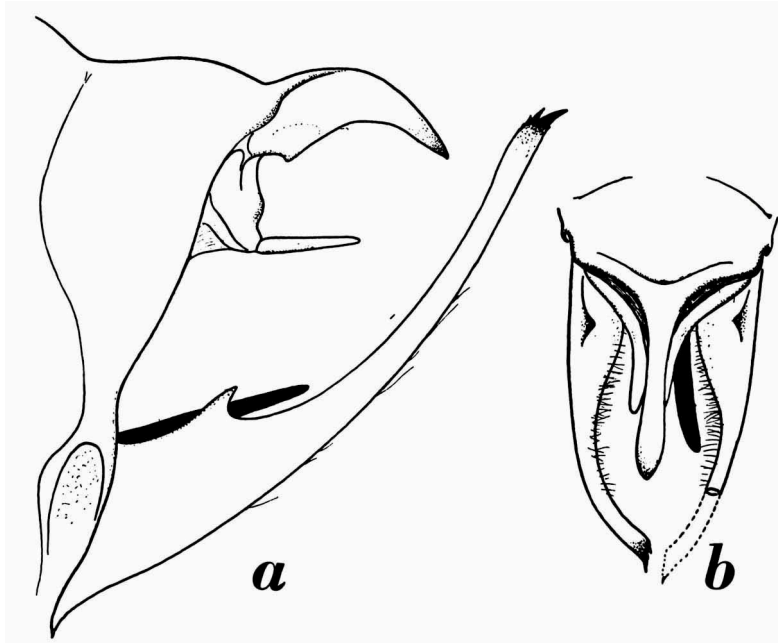


Fig. 1. *Taenaris fergussonia* (Fruhst.), male genitalia. *a*, lateral view, left side (one of the valvae omitted). *b*, dorsal view.  $\times 30$ .

a separate subspecies. Rothschild, who described the subspecies *convergens*, also from the Fergusson Islands, apparently did not want to unite the two forms from the same locality into one species, and gives the following classification of the numerous subspecies of the group:

*Taenaris myops* (Feld.) with the subspecies *myops* (Feld.), *praxedes* (Fruhst.), *fergussonia* (Fruhst.), *miscus* Fruhst., *misolensis* Rothsch., and *verbeeki* Fruhst.,

*Taenaris kirschi* (Staud.) with the subspecies *kirschi* (Stauding.), *occidentalis* Rothsch., *interfaunus* Rothsch., and *convergens* Rothsch.,

*Taenaris mailua* (Gr. Smith), with the subspecies *mailua* (Gr. Smith), *littoralis* Rothsch., and *rosseli* Fruhst.

Rothschild remarks that he does not agree with Fruhstorfer's arrangement of the forms in Seitz, he is convinced that the material in question belongs to three species, but does not give his arguments for this opinion.

A study of the male genitals of the subspecies *fergussonia*, *myops*, *kirschi*, *erriphoria* and *mailua* showed that these organs in *fergussonia* are of a strongly different type from those of the four other forms examined. In *fergussonia* the uncus is robust and strongly, nearly rectangularly bent, the valvae reaching far beyond the apex of the uncus. The broad basal parts of the valvae are short, the distal parts are long and narrow, slightly broadened towards the apex. The apex of the valvae possesses a few teeth, the basal tooth strong and curved.

In *myops* the uncus is obtusangularly bent, not robust. The valvae do not reach the apex of the uncus, the basal parts of the valvae are longer than the distal parts, the distal parts are broadened towards the apex, and possess numerous teeth. The male genitals of *kirschi*, *erriphoria*, and *mailua* principally are of the same type as those of *myops*. There are, however, distinct differences in the shape of the valvae. The valvae of *erriphoria* and *kirschi* differ little, those of *mailua* are broad in their distal part.

It is certain that *fergussonia* represents a separate species. To obtain a clear insight into the natural arrangement of *kirschi*, *erriphoria*, and *mailua*, the male genitals of all the subspecies should be studied. Provisionally I want to arrange them as subspecies under *Taenaris myops*.

***Taenaris myops myops* (Feld., 1860) (fig. 2a, b)**

L. 1 ♂ Aru Islands. 1 ♂ Aru Islands, 1908, A. Tamson. 1 ♂ Wammer, Rosenberg.

***Taenaris myops kirschi* (Stauding., 1887) (fig. 2c, d)**

L. 1 ♂ Mekea, Br. New Guinea, 1908, J. Henkelman.  
G. 1 ♂ New Guinea.

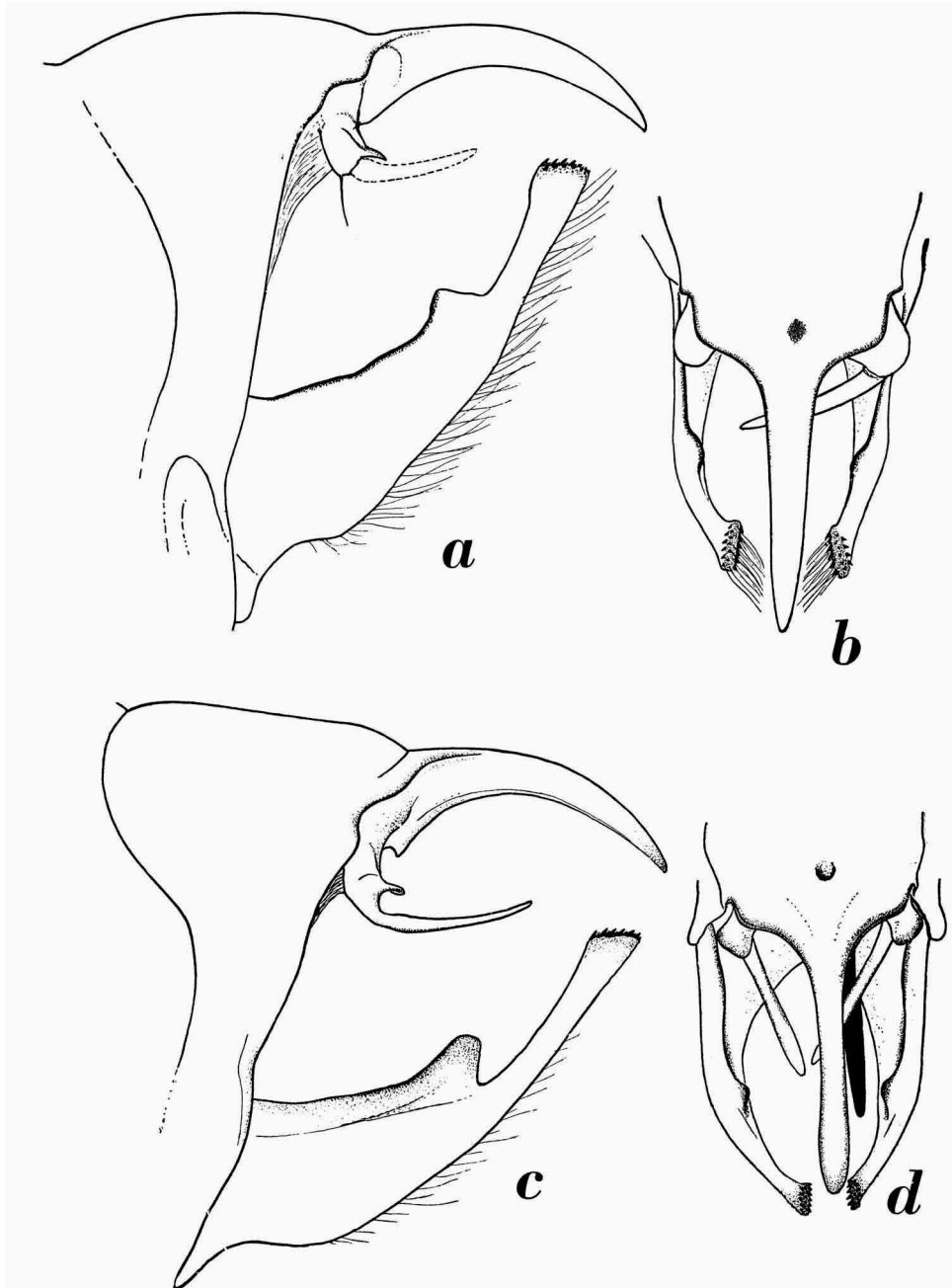


Fig. 2. *a, b*, *Taenaris myops myops* (Feld.), male genitalia. *a*, lateral view, left side (one of the valvae omitted). *b*, dorsal view.  $\times 30$ .  
*c, d*, *Taenaris myops kirschi* (Stauding.), male genitalia. *c*, lateral view, left side (one of the valvae omitted). *d*, dorsal view.  $\times 30$ .



**Taenaris myops erriphoria** Fruhst., 1915 (Pl. X figs. 3, 4, Pl. XI figs. 1, 2, fig. 3a, b)

J. 3 ♂♂ Yule Island, Br. New Guinea, the ocelli are not distinct on the upper side. 1 ♀ Plesioallotype, Yule Island, Br. New Guinea. 2 ♀♀ Yule Island, Br. New Guinea.

♀ Upper side. Fore wing pure white, dark brown between costalis and subcostalis. Hind wing white, yellow near base, a narrow dark brown margin at apex. Under side, yellowish white. Fore wing further as the upper side. Hind wing with a narrow dark brown margin which runs to the first medium nervure, yellow at base, ocelli large, with a broad dark brown ring.

**Taenaris myops mailua** (Gr. Smith) (fig. 3c, d)

J. 2 ♂♂ Milne Bay, Br. New Guinea, 1918.

M. 1 ♂ Milne Bay, New Guinea, H. Fruhstorfer. 1 ♀ Milne Bay, New Guinea, H. Fruhstorfer.

**Taenaris hyperbola hyperbola** (Kirsch, 1877)

B. 3 ♂♂ Geelvink Bay.

**Taenaris hyperbola automola** (Kirsch, 1877)

A. 2 ♂♂ N. W. Guinea, 1912-1913, J. C. Baggelaar.

**Taenaris hyperbola versteegi** (Eecke, 1915)

A. 1 ♂ Type, Kloofbivouac, 23-1-'13, 3rd New Guinea expedition. 1 ♂ Type, Kloofbivouac, 24-2-'13, 3rd New Guinea expedition. 1 ♂ Kloofbivouac, 27-2-'13, 3rd New Guinea expedition.

**Taenaris artemis artemis** (Snell. v. Voll., 1860)

L. 1 ♂ Holotype, New Guinea, Macklot. 2 ♂♂ New Guinea. 2 ♂♂ Fakfak, McCluer Gulf, New Guinea, Palmer v. d. Broek. 1 ♂ Kasuri, S. W. New Guinea, Palmer v. d. Broek. 1 ♂ Kloofbivouac, 15-1-'13, 3rd New Guinea expedition. 1 ♂ Kloofbivouac, 22-2-'13, 3rd New Guinea expedition. 1 ♂ Kloofbivouac, 7-3-'13, 3rd New Guinea expedition. 1 ♂ Sabang, 1-7-'07, 1st New Guinea expedition. 1 ♀ Fakfak, S. W. New Guinea, 16-2-'07, Palmer v. d. Broek. 2 ♀♀ N. W. New Guinea, 1912-1913, J. C. Baggelaar. 1 ♀ Andai, New Guinea, Netscher. 1 ♀ Sekru, New Guinea, K. Schädler. 1 ♀ Wendesi, 30-7-'07, 1st New Guinea expedition. 1 ♀ Sabang, New Guinea, 1907, 1st New Guinea expedition, Lorentz. 1 ♀ Sentani, 10-4-'07, 1st New

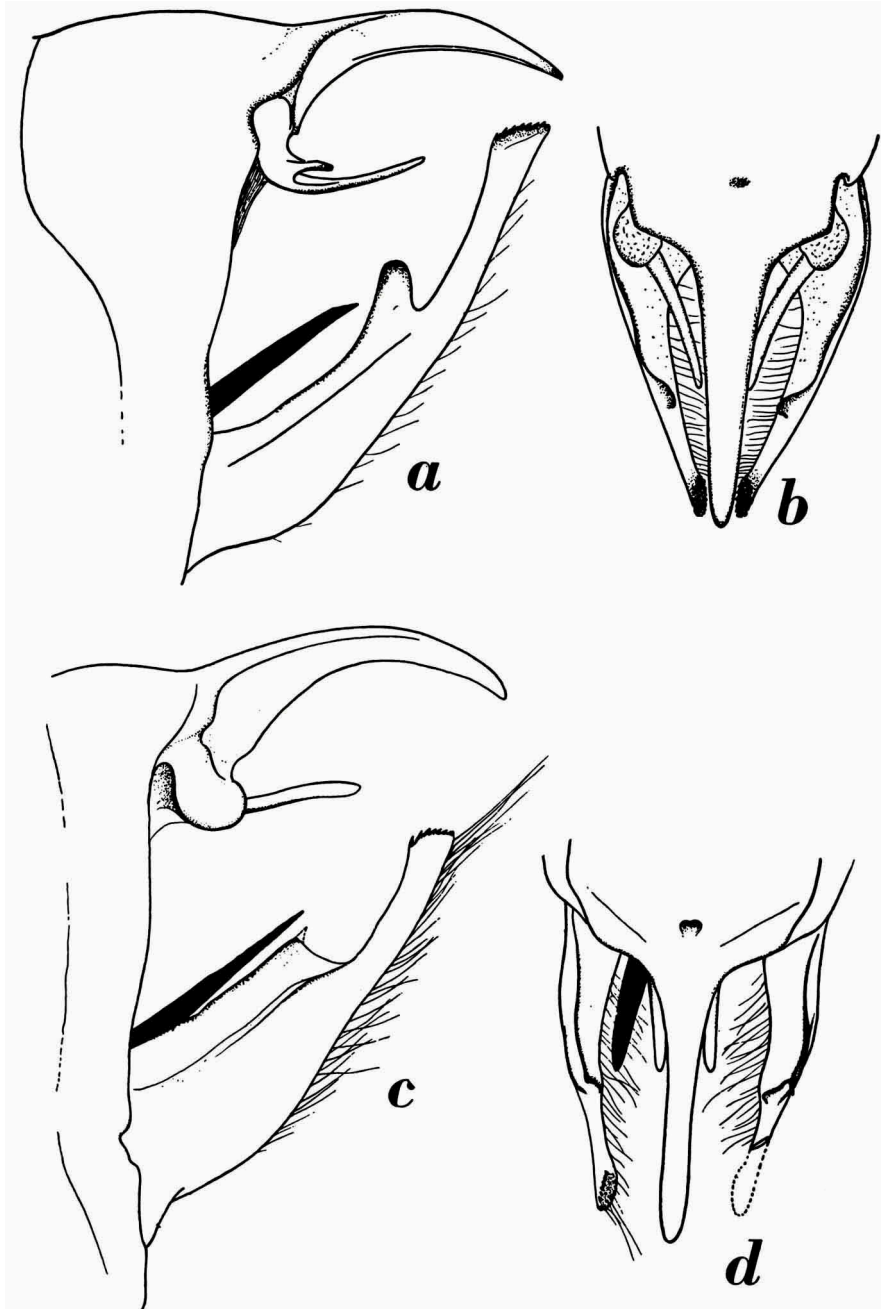


Fig. 3. *a, b*, *Taenaris myops erriphoria* Fruhst., male genitalia. *a*, lateral view, left side (one of the valvae omitted), *b*, dorsal view.  $\times 30$ .  
*c, d*, *Taenaris myops mailua* (Gr. Smith), male genitalia. *c*, lateral view, left side (one of the valvae omitted). *d*, dorsal view.  $\times 30$ .

Guinea expedition. 1 ♀ 15 Dec., 3rd New Guinea expedition, 1912-1913. 1 ♀ 11-12-'12, 3rd New Guinea expedition, De Beaufort. 4 ♀♀ Ron Island, Dutch New Guinea. 1 ♀ Pionierbivouac, Mamberamo River, N. New Guinea, July 1920, W. C. v. Heurn. 1 ♀ Pionierbivouac, Mamberamo River, N. New Guinea, Jan. 1921, W. C. v. Heurn. 1 ♀ without data.

J. 2 ♂♂ Wandammen Bay, N. Dutch New Guinea. 1 ♂ Wendesi, N. Dutch New Guinea. 5 ♀♀ Wendesi, N. Dutch New Guinea. 2 ♀♀ Ron Island, N. Dutch New Guinea.

Several of the specimens mentioned above are intermediate forms between the subsp. *artemis* (Snell. v. Voll.) and the subsp. *zenada* (Fruhst.). Not a single specimen agrees completely with the description of the subsp. *zenada* Fruhst. I do not believe that the subsp. *zenada* (Fruhst.) is a distinct race. For this reason all the material has been classified as the subsp. *artemis* (Snell. v. Voll.).

A. 1 ♂ 1st and 2nd New Guinea expedition, 1907 and 1909-1910. 1 ♀ Etna Bay, 1st and 2nd New Guinea expedition, 1907 and 1909-1910. 4 ♀♀ N. W. New Guinea, 1912-1913, J. C. Baggelaar.

B. 2 ♂♂ Geelvink Bay, 1921. 1 ♂ Doreh, 1907. 1 ♂ Mici, 1925. 1 ♂ Meos War, 1907. 1 ♂ Fakfak, 1915. 4 ♂♂ Fakfak, 1921. 1 ♀ Geelvink Bay, 1907. 2 ♀♀ Geelvink Bay, 1921. 3 ♀♀ Mici, 1925. 1 ♀ Meos War. 1 ♀ Fakfak, 1915. 1 ♀ Fakfak, 1921. 2 ♀♀ Merauke, 1925.

**Taenaris artemis gisela** (Fruhst., 1904)

L. 1 ♂ Waigeu, Bernstein.

M. 1 ♂ Waigeu, H. Fruhstorfer.

**Taenaris artemis celsa** (Fruhst., 1904)

L. 1 ♂ Salawati, Bernstein.

**Taenaris artemis myopina** (Fruhst., 1904)

L. 1 ♂ Maikur, Aru Islands. 1 ♀ Aru Islands. 1 ♀ Aru Islands, Ludeking.

J. 1 ♀ Kei Islands.

**Taenaris artemis staudingeri** (Honn., 1889)

L. 1 ♂ New Guinea, 1891, Staudinger. 1 ♂ New Guinea. 1 ♂ Astrolabe Bay, E. New Guinea, V. d. Poll. 1 ♂ Prauwenbivouac, N. New Guinea, Nov. 1920, W. C. v. Heurn, faintly tinged with red, intermediate specimen to the forma *eos* Heller. 1 ♂ Prauwenbivouac, N. New Guinea, Dec. 1920, W. C. v. Heurn. 1 ♀ Friedrich Wilhelmshafen, New Guinea, H. Fruhstorfer.

1 ♀ Astrolabe Bay, E. New Guinea, V. d. Poll. 5 ♀♀ Prauwenbivouac, N. New Guinea, Nov. 1920, W. C. v. Heurn. 1 ♀ Prauwenbivouac, N. New Guinea, Dec. 1920, W. C. v. Heurn. 1 ♀ Pionierbivouac, N. New Guinea, July 1921, W. C. v. Heurn.

J. 1 ♀ New Guinea.

A. 1 ♂ 6-5-'07, 1st New Guinea expedition. 1 ♂ 1st and 2nd New Guinea expedition, 1907 and 1909-1910, 1 ♀ 1st New Guinea expedition, 1907, Lorentz. 1 ♀ Nov., 1st and 2nd New Guinea expedition, 1907 and 1909-1910.

M. 1 ♂ New Guinea, M. Brauner.

B. 1 ♀ Biak, New Guinea, 1907.

Forma *artemides* Fruhst., 1905

L. 3 ♀♀ Prauwenbivouac, Idenburg River, N. New Guinea, W. C. v. Heurn. Two specimens with small anal ocelli, one without anal ocelli.

Forma *limbata* Fruhst., 1905

L. 1 ♂ Tanah Merah Bay, 1st and 2nd New Guinea expedition, 1907 and 1909-1910. 1 ♂ New Guinea, Staudinger.

Forma *albicans* (Hagen, 1897)

L. 2 ♂♂ New Guinea, H. Fruhstorfer. 1 ♂ Astrolabe Bay, E. New Guinea, V. d. Poll. 1 ♂ Sentani, 20-6-'07, 1st New Guinea expedition.

G. 1 ♂ New Guinea.

Forma *druentia* Fruhst., 1911

G. 1 ♂ New Guinea.

**Taenaris artemis sticheli** (Fruhst., 1901)

J. 1 ♂ Milne Bay, Br. New Guinea.

**Taenaris artemis** subsp. n.

G. 1 ♀ New Guinea, not indentifiable as to the subspecies.

**Taenaris gorgo gorgo** (Kirsch, 1877)

L. 3 ♂♂ Kaitoro, S. W. Guinea, 24-4-'07, Palmer v. d. Broek. 1 ♂ 17-12-'12, De Beaufort. 1 ♂ Kloofbivouac, 17-1-'13. 2 ♂♂ Ron Island, Dutch New Guinea. 3 ♀♀ Kaitoro, S. W. Guinea, 24-4-'07, Palmer v. d. Broek. 1 ♀ Fakfak, 1907, Palmer v. d. Broek. 1 ♀ Fakfak, McCluer Gulf, Palmer v. d. Broek. 1 ♀ N. W. Guinea, J. C. Baggelaar.

J. 1 ♂ N. W. Dutch New Guinea.

B. 1 ♀ Mici, Geelvink Bay, 1921.

**Taenaris gorgo gorgophone** (Fruhst., 1904)

L. 1 ♀ New Guinea. 1 ♀ Meto Deli, 1st and 2nd New Guinea expedition, 1907 and 1909-1910.

G. 2 ♂♂ New Guinea. 1 ♀ New Guinea.

**Taenaris gorgo yulei** nov. subsp. (Pl. XI figs. 3, 4)

♀. The black margin of the upper side of the fore wing narrow. The dark margin of the upper side of the hind wing as broad as in the subsp. *gorgo* (Kirsch), only the outer margin, however, blackish, the greater part dirty white, yellow hairs near base. Under side white with narrow dark margin. Ocelli small.

J. 1 ♀ Holotype, Yule Island, Br. New Guinea. 1 ♀ Yule Island, Br. New Guinea, without anal ocelli.

**Taenaris dimona desdemona** (Stauding., 1887)

L. 1 ♂ Serang, Piepers.

G. 1 ♂ Serang, C. Ribbe. 1 ♂ Amboina. 1 ♀ Amboina.

**Taenaris dimona sorronga** Fruhst., 1905

L. 3 ♂♂ N. W. Guinea, 1912-1913, J. C. Baggelaar.

A. 1 ♀ without data.

B. 1 ♂ Fakfak, 1912. 1 ♂ Fakfak, 1921. 2 ♀♀ Fakfak, 1912. 1 ♀ Fakfak, 1921.

**Taenaris dimona kapaura** (Fruhst., 1904)

L. 1 ♂ Prauwenbivouac, N. Dutch New Guinea, Sept. 1920, W. C. v. Heurn. 3 ♂♂ Prauwenbivouac, N. Dutch New Guinea, Nov. 1920, W. C. v. Heurn. 1 ♂ Pionierbivouac, N. Dutch New Guinea, July 1921, W. C. v. Heurn. 1 ♂ Sentani, 20-3-'07, 1st New Guinea expedition. 1 ♂ Mosso, 10-5-'07, 1st New Guinea expedition. 1 ♂ N. W. New Guinea, 1912-1913, J. C. Baggelaar. 1 ♂ New Guinea. 1 ♀ Prauwenbivouac, N. Dutch New Guinea, Nov. 1920, W. C. v. Heurn.

J. 1 ♂ Eilanden River, Dutch New Guinea.

G. 2 ♂♂ New Guinea.

A. 2 ♂♂ N. W. New Guinea, 1912-1913, J. C. Baggelaar. 1 ♂ Sentani, 1st and 2nd New Guinea expedition, 1907 and 1909-1910.

**Taenaris dimona zaitha** Fruhst., 1914

L. 1 ♂ Kloofbivouac, 22-1-'13, 3rd New Guinea expedition. 1 ♂ Kloofbivouac, 17-2-'13, 3rd New Guinea expedition. 1 ♂ Kloofbivouac, New Guinea, 20-2-'13, 3rd New Guinea expedition. 1 ♂ Kloofbivouac, New Guinea, 7-3-'13, 3rd New Guinea expedition. 1 ♀ New Guinea, 1907, Lorentz, 1st New Guinea expedition.

J. 1 ♂ Eilanden River, Dutch New Guinea.

A. 1 ♂ Kloofbivouac, 7-12-'13, 3rd New Guinea expedition. 1 ♂ Kloofbivouac, 18-2-'13, 3rd New Guinea expedition.

**Taenaris dimona sophaineta** Fruhst., 1914 (Pl. XII figs. 1-4)

J. 2 ♂♂ Yule Island, Br. New Guinea. Fruhstorfer (Ent. Rundschau, vol. 31, p. 27, 1911) remarks concerning the upper side: "♂ Der Apikal-saum kaum halb so breit als bei den übrigen bisher bekannten Vikarianten", and in regard to the under side: "Die vordere Ozelle der Hfgl. steht in einem völlig weissen Felde". In the 2 specimens the dark apical margin only slightly narrower than in the other subspecies, and the anterior ocelli on the under side of the hind wing do not lie in a white field.

J. 1 ♀ Plesioallotype, Yule Island, Br. New Guinea, 1909. Upper side. The dark apical margin of the fore wing narrow, the hind wing white with a blackish shadow around the ocelli, light yellow near base. Under side. Fore wing as the upper side. The hind wing with some black, dirty white around the anterior ocelli, light yellow near base.

**Taenaris dina dina** (Stauding., 1894)

G. 1 ♀ New Guinea.

**Taenaris bioculata bioculata** (Guér.-Mén., 1830)

L. 2 ♂♂ Waigeu, Bernstein.

**Taenaris bioculata pallida** Fruhst., 1905

L. 1 ♂ Fakfak, McCluer Gulf, Palmer v. d. Broek, 1 ♂ without data. 1 ♂ Salawati, Bernstein. 1 ♀ Fakfak, McCluer Gulf, Palmer v. d. Broek. 2 ♀♀ Fakfak, New Guinea, 20 April 1916, Baud. 1 ♀ Kloofbivouac, 5-3-'13, 3rd New Guinea expedition, 1913. 1 ♀ Ron Island, Dutch New Guinea.

J. 1 ♂ Wendesi, N. Dutch New Guinea. 2 ♀♀ Wendesi, N. Dutch New Guinea.

A. 1 ♂ N. W. New Guinea, 1912-1913, J. C. Baggelaar. 2 ♀♀ N. W. New Guinea, 1912-1913, J. C. Baggelaar.

B. 1 ♂ Wandammen Bay, 1920. 1 ♂ Geelvink Bay, 1921. 1 ♂ Mici, 1925. 1 ♀ Geelvink Bay, 1921. 1 ♀ Mici, 1925, 1 ♀ Fakfak, 1912. 1 ♀ Andei, 1907. 1 ♀ Meos War, 1907.

**Taenaris bioculata charonides** (Stauding., 1894)

L. 1 ♂ Astrolabe Bay, E. New Guinea, V. d. Poll. 1 ♂ Mosso, 5-5-'07, 1st New Guinea expedition. 1 ♂ New Guinea. 1 ♀ Astrolabe Bay, E. New Guinea, V. d. Poll. 1 ♀ Pionierbivouac, N. New Guinea, July 1920, W. C. v. Heurn. 1 ♀ Pionierbivouac, N. New Guinea, Aug. 1920, W. C. v. Heurn. 1 ♀ Sentani 5-4-'07, 1st New Guinea expedition. 1 ♀ Finisterre Mountains, New Guinea.

J. 1 ♂ New Guinea, V. d. Bergh. 1 ♀ Port Moresby, Br. New Guinea. G. 2 ♂♂ New Guinea. 2 ♀♀ New Guinea.

**Taenaris bioculata charon** (Stauding., 1887)

L. 1 ♂ Finschhafen, New Guinea, P. Ringler. 1 ♂ New Guinea. 2 ♀♀ New Guinea.

**Taenaris schönbergi schönbergi** (Fruhst., 1893)

J. 2 ♂♂ Dutch New Guinea.

M. 1 ♂ New Guinea. W. Niepelt. 1 ♀ New Guinea, W. Niepelt.

**Taenaris schönbergi wandammensis** (Joicey & Talb., 1916)

J. 1 ♂ Ron Island, Wandammen Mountains, N. New Guinea.

B. 1 ♀ Wandammen Mountains, Geelvink Bay, N. New Guinea, 1921.

**Taenaris schönbergi vanheurni** nov. subsp. (Pl. XIII figs. 1-2)

Named after Jhr. W. C. van Heurn, who collected the specimens.

Joicey & Talbot (Ann. Mag. Nat. Hist., ser. 8, vol. 17, p. 73, pl. 6 fig. 5, 1916) described the subsp. *wandammensis* from the Wandammen Mountains, Ron Island. Van Eecke (Nov. Guinea, livr. 15, Zool., pag. 38, 1924) ranged two ♂♂ and 1 ♀ from Prauwenbivouac, N. Dutch Guinea, Idenburg River, under the name subsp. *wandammensis* (Joicey & Talb.). For this reason Stichel (Lep. Catalogus, pars 54, pag. 133, 1933) gives the habitats Wandammen Mountains and Mamberano River (the Idenburg River is a tributary of the Mamberano). The two ♂♂ and 1 ♀ mentioned by Van Eecke belong to the nov. subsp. *vanheurni*.

♂ Upper side. Both wings pure white. Fore wing between the costa and cell dark blackish brown, mixed with white near the top of the cell. Cell chestnut brown. The brown band outside the cell runs between the beginning of the first and third medium nervure obliquely to the anal angle. Hind wing with extremely narrow black margin, particularly distinct along inner margin. Light brown hairs between medium and submedium nervure. Under side. Fore wing as above. Hind wing white, yellowish at extreme base, with apical and anal ocelli, of which the apical is the largest. Further as above.

♀ similar to ♂, larger, without light brown hairs on hind wing.

L. 1 ♂ Holotype, Prauwenbivouac, Idenburg River, N. Dutch New Guinea, Nov. 1920, W. C. v. Heurn. 1 ♂ Prauwenbivouac, Idenburg River, N. Dutch New Guinea, Nov. 1920, W. C. v. Heurn. 1 ♀ Prauwenbivouac, Idenburg River, N. Dutch New Guinea, Nov. 1920, W. C. v. Heurn.

## 2. Subfamilia HYANTINAE H. Stich., 1905

### 1. Genus **Hyantis** Hew., 1862

#### **Hyantis hodeva hodeva** Hew., 1862

L. 1 ♂ Ron Island, Dutch New Guinea. 1 ♂ Fakfak, N. W. New Guinea, 16 April 1910, Baud.

A. 1 ♂ Bivak Island, 23-3-'07, 1st New Guinea expedition. 1 ♀ N. W. New Guinea, 1912-1913, J. C. Baggelaar.

B. 1 ♂ Mici, Geelvink Bay, 1921.

#### Forma *infumata* Stauding., 1894

B. 1 ♂ Geelvink Bay, 1910.

#### **Hyantis hodeva fuliginosa** Gr. Smith 1898

L. 1 ♂ New Guinea. 1 ♂ Pionierbivouac, N. New Guinea, 4 Jan. 1920, W. C. v. Heurn. 2 ♂♂ Pionierbivouac, N. New Guinea, July 1920, W. C. v. Heurn. 2 ♂♂ Prauwenbivouac, N. New Guinea, Nov. 1920, W. C. v. Heurn. 1 ♂ without data. 1 ♀ Pionierbivouac, Mamberamo River, N. New Guinea, July 1920, W. C. v. Heurn. 1 ♀ Prauwenbivouac, N. New Guinea, Sept. 1920, W. C. v. Heurn. 1 ♀ Prauwenbivouac, N. New Guinea, Nov. 1920, W. C. v. Heurn.

J. 1 ♂ Dutch New Guinea.



Forma *microphthalma* (Heller, 1915)

L. 1 ♂ Kloofbivouac, 21-11-'12, 3rd New Guinea expedition. 1 ♀ Kloofbivouac, 4-3-'13, 3rd New Guinea expedition. 1 ♀ Kloofbivouac, 25-2-'13, 3rd New Guinea expedition.

J. 1 ♂ Wendesi, Dutch New Guinea.

**Hyantis hodeva melanomata** Stauding., 1894

Forma *anulata* Stich., 1904

L. 1 ♂ Kloofbivouac, 4-3-'13, 3rd New Guinea expedition. 1 ♂ Van Weelscamp, 28-5-'07, 1st New Guinea expedition. 1 ♂ Sabang, 27-6-'07, 1st New Guinea expedition. 1 ♀ without data.

3. Genus **Morphopsis** Ch. Oberth., 1880**Morphopsis albertisi albertisi** Oberth., 1880

L. 1 ♂ Kloofbivouac, 24-1-'13, 3rd New Guinea expedition. 1 ♀ Sabang, New Guinea, 28 June 1907, Lorentz.

J. 1 ♀ N. Dutch New Guinea.

## 3. Subfamilia DISCOPHORINAE H. Stich., 1902

1. Genus **Discophora** Boisd., 1836**Discophora celinde celinde** (Stoll, 1790)

L. 1 ♂ Java, Ver Huell. 1 ♂ Java, Blume. 1 ♂ Java, E. Jacobson. 1 ♂ Semarang, C. J. Meijer. 2 ♂♂ Ambarawa, Ludeking. 3 ♂♂ Batavia, Java, 1883. 1 ♂ Sukabumi, W. Java, 2000', 1893, H. Fruhstorfer. 1 ♂ Mt. Gedeh, W. Java, 4000', Aug. 1892, H. Fruhstorfer. 1 ♂ Malang, Java. 1 ♂ Tegal, Java, Lucassen. 1 ♂ Java, 1905, P. Buitendijk. 1 ♂ Batavia, Jan. 1908. 2 ♂♂ Buitenzorg, June 1909, H. W. v. d. Weele. 1 ♂ Buitenzorg, July 1909, H. W. v. d. Weele. 1 ♂ Buitenzorg, Aug. 1909, H. W. v. d. Weele. 1 ♂ Sumber-Duren, Java, 1909, W. C. v. Heurn. 1 ♂ Wynkoops Bay, 11 March. 1 ♂ Cheribon, Java, 21-2-'11, Oudemans. 1 ♂ Coll. Metzger. 1 ♂ Surabaya, July 1920, P. Buitendijk. 1 ♂ Java, E. Jacobson. 2 ♀♀ Reinwardt, Java. 1 ♀ Java, 1907, P. Buitendijk. 1 ♀ Java, Lucassen. 1 ♀ Ardjuno, Nees. 1 ♀ Semarang, C. J. Meijer. 1 ♀ Buitenzorg, W. Java, 1888. 1 ♀ Ambarawa, Ludeking. 1 ♀ Batavia, Java, 1886. 1 ♀ Jokyakarta, Java, 1892. 2 ♀♀ Tegal, Java, Lucassen. 1 ♀ Preanger, 1000', Coll. Piepers and Snellen. 1 ♀ Batavia, Java, 1887.

J. 5 ♂♂ W. Java. 1 ♂ Sumatra (?). 1 ♀ W. Java. 1 ♀ Sukabumi, W. Java, 1910.

G. 1 ♂ without data. 1 ♀ Java.

A. 1 ♂ Java, 1 ♂ Amberawa, Ludeking. 1 ♂ W. Java, 1887, Mollinger. 3 ♂♂ without data. 1 ♀ Preanger (?), Beuker. 1 ♀ E. Borneo (?), 1905, Hagen. 3 ♀♀ without data.

B. 1 ♂ Modjo Warna, Java. 1 ♂ Modjo Warna, Java, 1911. 1 ♂ W. Java, 1901. 1 ♂ W. Java, 1906. 1 ♂ W. Java, 1915. 1 ♂ W. Java, 1920. 1 ♂ Segaran, Java, 1910. 1 ♂ Kediri, Java, 1911. 1 ♂ Djember, Java, 1923. 1 ♀ W. Java, 1903. 1 ♀ W. Java, 1920. 1 ♀ W. Java, 1925. 2 ♀♀ Segaran, Java, 1911. 1 ♀ Djember, Java, 1922. 1 ♀ Indramaju, Java, 1909.

Forma *varda* Fruhst., 1911

J. 1 ♂ W. Java.

***Discophora continentalis continentalis* Stauding., 1887**

L. 1 ♂ Bengal, Moore. 1 ♂ Sikkim, India, 1891, De Nicéville. 1 ♂ India, De Nicéville. 1 ♂ Sikkim, 1893, Coll. E. Sharpe. 1 ♀ Sikkim, India, De Nicéville.

***Discophora necho necho* Feld., 1866**

L. 1 ♂ Java, Blume. 1 ♂ Java, H. W. v. d. Weele. 1 ♂ Java, Coll. Snellen and Piepers. 1 ♂ S. Java, 1500', 1891, H. Fruhstorfer. 1 ♂ Mt. Gedeh, W. Java, 4000', 1893, H. Fruhstorfer. 1 ♂ Mt. Gedeh, W. Java, 1893. 1 ♂ Salak Mountains, W. Java, 1893. 1 ♂ Buitenzorg, W. Java, 1893. 1 ♂ E. Java, 1901, Lycklama. 2 ♂♂ without data. 1 ♀ S. Java, 1500', 1891, H. Fruhstorfer. 1 ♀ Mt. Gedeh, 4000', Aug. 1892, H. Fruhstorfer. 1 ♀ Buitenzorg, 3-2-'82, C. J. Oudemans.

J. 1 ♂ Sukabumi, W. Java. 2 ♂♂ W. Java. 2 ♀♀ W. Java.

G. 1 ♂ Java.

A. 1 ♀ without data.

B. 1 ♂ Sukabumi, Java, 1918. 1 ♂ Sukabumi, Java, 1920.

***Discophora necho cheops* Feld., 1866**

L. 1 ♂ W. Borneo, 1892. 1 ♂ W. Borneo, 1893. 1 ♂ Borneo. 1 ♂ Borneo, Schwaner. 1 ♂ S. E. Borneo (certainly not the subsp. *helvidius* Fruhst.).

J. 1 ♂ Borneo. 1 ♂ N. Borneo. 1 ♀ N. Borneo.

G. 2 ♂♂ Borneo. 1 ♂ Labuan. 1 ♀ Borneo.

A. 1 ♂ Borneo. 1 ♂ Indo Australia. 1 ♂ Barabei, S. E. Borneo, 1883, A. Pool. 2 ♀♀ without data.

B. 4 ♂♂ Pontianak, Borneo, 1913. 1 ♀ Pontianak, Borneo, 1906. 3 ♀♀ Pontianak, Borneo, 1913.

**Discophora necho dis** Nicév., 1892

L. 2 ♂♂ Sumatra, Ludeking. 1 ♂ Pajakumbuh, E. Sumatra, 1906, H. Rouyer. 1 ♂ Pajakumbuh, E. Sumatra, H. Rouyer. 1 ♂ Deli, Sumatra, Schagen v. Leeuwen. 1 ♂ Deli, Sumatra. 1 ♂ Deli, Sumatra. 1 ♂ Padang Sidempuan, N. W. Sumatra, 1890, J. D. Pasteur. 2 ♂♂ Bekri, Deli, April 1892, H. M. Pantekoek. 1 ♂ Padang Sidempuan, Tapanuli, 1898, A. L. v. Hasselt. 1 ♂ Rembu near Bugi Pingi, 1904, W. Sumatra, J. Menzel. 1 ♂ Padang, W. Sumatra, May 1904, J. Menzel. 1 ♂ Mura Aman, 1910, Abdul Rachman. 1 ♂ Ft. de Kock, Sumatra, 920 m, 1927, E. Jacobson. 1 ♂ Ft. de Kock, Sumatra, Van Riemsdijk. 2 ♂♂ Kalianda, Telokbetong, S. Sumatra, 1928, Bedier de Prairie. 2 ♀♀ Padang Sidempuan, N. W. Sumatra, 1890, J. D. Pasteur. 3 ♀♀ Serdang, N. E. Sumatra, Dr. B. Hagen. 1 ♀ Ft. de Kock, Sumatra, Van Riemsdijk. 1 ♀ Lampong, Sumatra, Van Hasselt. 1 ♀ Kalianda, Telokbetong, S. Sumatra, 1928, Bedier de Prairie.

J. 1 ♂ Medan, Sumatra, 6-4-'10. 1 ♀ Medan, Sumatra, 5-4-'10. 1 ♀ Sumatra.

A. 2 ♂♂ Deli, Sumatra, 1904, Waldeck. 1 ♂ Medan, Deli, 5-4-'10, De Bussy. 1 ♀ Deli, Sumatra, 1904, Waldeck. 1 ♀ Medan, Deli, 1-3-'10, De Bussy.

B. 2 ♂♂ Sibolangit, E. Sumatra, 1911. 1 ♂ Sibolangit, E. Sumatra, 1920. 1 ♂ Siantar, E. Sumatra, 1920. 1 ♀ Siantar, E. Sumatra, 1920.

**Discophora necho propinqua** Stich., 1900

L. 2 ♂♂ Nias, 1892, J. D. Pasteur. 2 ♂♂ Nias, 1890, J. D. Pasteur. 1 ♂ Nias, Coll. Piepers.

A. 1 ♀ Nias, 1857. 1 ♀ without data.

**Discophora ogina** (God., 1824)

L. 1 ♂ Philippine Islands, Rössler.

**Discophora bambusae bambusae** C. & R. Feld., 1866

L. 1 ♂ Celebes, Staudinger. 1 ♂ Tondano, N. Celebes, 1927, W. v. Veldhoven. 1 ♂ Minahassa, Celebes, 1920, Coll. v. d. Bergh.

J. 1 ♂ Tangari, Minahassa, Celebes, 21-2-'20.

G. 1 ♂ without data.

B. 1 ♂ Celebes, 1912. 1 ♂ Paloppo, Celebes, 1913. 3 ♂♂ Minahassa, Celebes, 1920.

***Discophora sondaica sondaica*** Boisd., 1836

L. 1 ♂ C. Java, 1887. 1 ♂ S. Java, 1500', 1891, H. Fruhstorfer. 1 ♂ Wynkoops Bay, W. Java, 1893. 1 ♀ Batavia, Java, 1909, W. C. v. Heurn. 1 ♀ S. Java, 1500', 1891, H. Fruhstorfer.

J. 3 ♂♂ W. Java. 1 ♀ W. Java.

B. 1 ♂ Sukabumi, Java, 1909. 2 ♂♂ W. Java, 1915. 1 ♂ W. Java, 1919. 1 ♂ Djember, Java, 1922.

Forma *despoliata* Stich., 1902.

L. 1 ♂ Preanger, W. Java, 5000', Sijthoff. 1 ♂ Garut, Java, 13-4-'93, Mrs. Aster. 1 ♂ S. Java, 1500', 1891, H. Fruhstorfer.

***Discophora sondaica symphronia*** Fruhst., 1911

L. 1 ♂ W. Borneo, 1892. 1 ♂ W. Borneo, 1893. 1 ♂ Matan, W. Borneo. 3 ♂♂ Tandjong Morawa, Serdang, N. E. Sumatra, Dr. B. Hagen. 1 ♂ Perak, Malay Peninsula, 1891. 1 ♂ Lampong, Sumatra, 1891. 1 ♂ Kalianda, Telokbetong, S. Sumatra, 1928, Bedier de Prairie. 1 ♀ Sumatra, Ludeking. 1 ♀ Tandjong Morawa, Serdang, N. E. Sumatra, Dr. B. Hagen. 1 ♀ Salak, Padang, 1907, P. O. Stolz. 1 ♀ Kalianda, Telokbetong, S. Sumatra, 1928, Bedier de Prairie.

J. 1 ♂ Tebingtinggi, E. Coast Sumatra, May 1917.

G. 1 ♂ Borneo.

B. 1 ♂ Sibolangit, E. Sumatra, 1912. 2 ♂♂ Lubu Sikaping, W. Sumatra, 1916. 1 ♀ Sibolangit, E. Sumatra, 1912. 1 ♀ Sibolangit, E. Sumatra.

***Discophora sondaica tulliana*** Stich., 1905

L. 2 ♀♀ China, Raye.

J. 1 ♂ Tonkin.

G. 1 ♂ Hong Kong.

***Discophora sondaica zal*** Westw., 1851

L. 1 ♂ N. India, Janet. 1 ♂ India, De Nicéville. 1 ♂ Darjeeling, 1893, E. Sharpe.

J. 1 ♀ Khasia Hills, Assam, 1909.

2. Genus **Enispe** Westw., 1848**Enispe euthymius euthymius** (Doubl., 1845)

L. 1 ♂ India, De Nicéville. 2 ♂♂ Sikkim, De Nicéville. 1 ♂ Sikkim, Heijer.

J. 1 ♂ Lahore, India.

**Enispe euthymius duranius** Fruhst., 1911

L. 1 ♂ Deli, Sumatra, Schagen v. Leeuwen.

**Enispe cyncus cyncus** Westw., 1851

J. 3 ♂♂ Naga Hills, Sept. 1922.

G. 1 ♂ Sikkim.

## RECENT LITERATURE

- BROOKS, C. JOSLIN, 1933. Faunis (Lep. Amath.): Revisional list. *Entomologist*, vol. 66, pp. 62-65.
- , 1937. Amathuxidia, Zeuxidia and Thauria (Lep. Amath.): Descriptions of new subspecies and revisional notes. *Entomologist*, vol. 70, pp. 147-151.
- CORBET, A. S. & PENDLEBURY, H. M., 1936. Revision of the genus Amathusia with special reference to the Malayan species. *J. F. M. S. Mus.*, vol. 18, pp. 141-153.
- , 1938. Further notes on the genus Amathusia (Lepidoptera-Amathusiidae). *J. F. M. S. Mus.*, vol. 18, pp. 240-241.
- HEMMING, A. F., 1933. On the types of certain butterfly genera. *Entomologist*, vol. 66, pp. 196-200.
- PENDLEBURY, H. M., 1933. Notes and new records of butterflies from the Malay Peninsula. *J. F. M. S. Mus.*, vol. 17, pp. 377-401.
- TALBOT, G., 1932. New forms of Lepidoptera from the Oriental region. *Bull. Hill Mus.*, vol. 4, pp. 155-169.

## EXPLANATION OF THE PLATES

## PLATE IX

- Fig. 1. *Faunis menado toxopeusi* nov. subspec. ♂, under side.  
Fig. 2. *Faunis menado toxopeusi* nov. subspec. ♀, under side.  
Fig. 3. *Taenaris catops kumusii* nov. subspec. ♂, upper side.  
Fig. 4. The same, under side.

## PLATE X

- Fig. 1. *Taenaris diana leto* Fruhst. forma *pseudodomitilla* nov. ♀, upper side.  
Fig. 2. The same, under side.  
Fig. 3. *Taenaris myops erriphoria* Fruhst., ♀, upper side.  
Fig. 4. The same, under side.

## PLATE XI

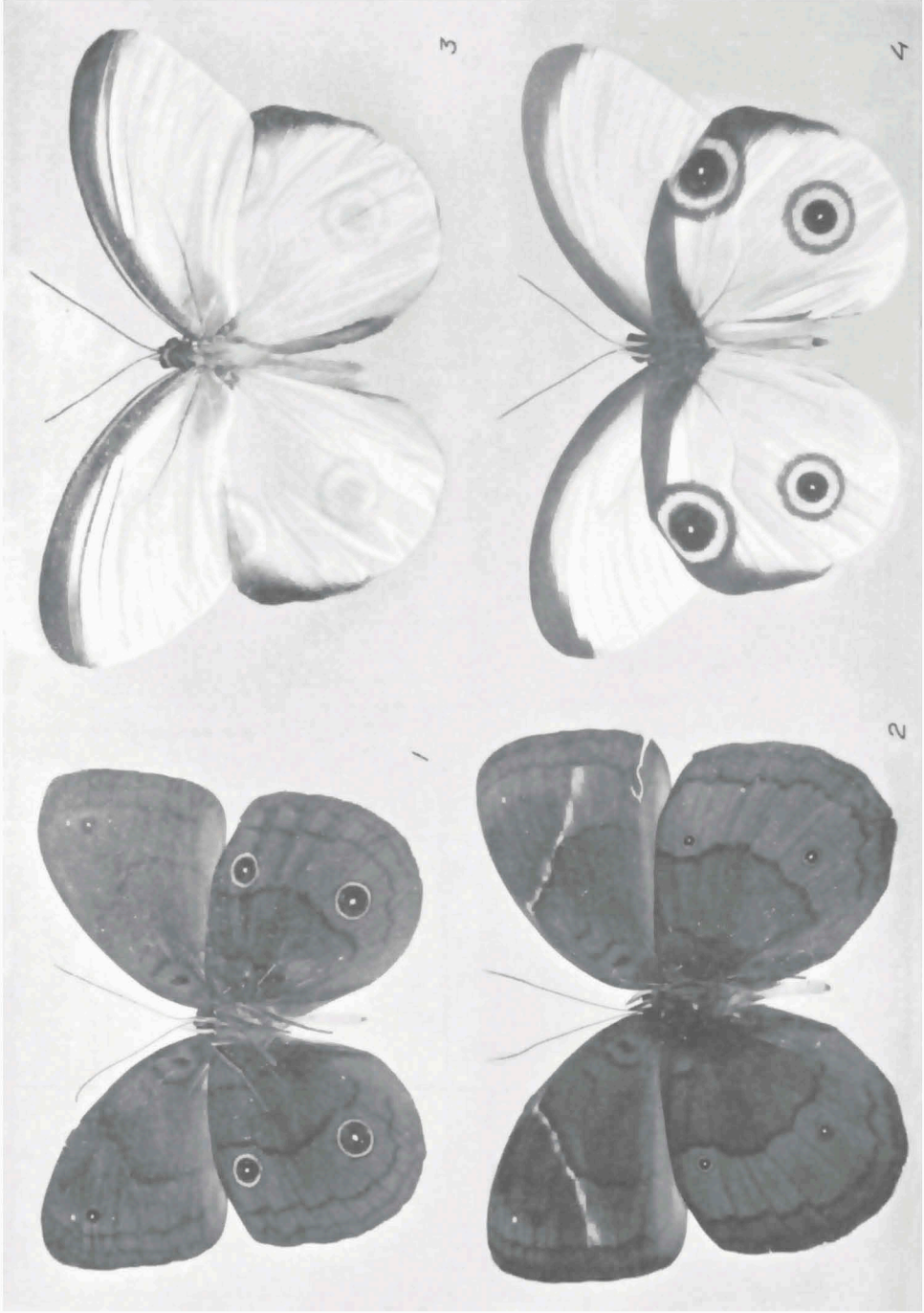
- Fig. 1. *Taenaris myops erriphoria* Fruhst. ♂, upper side.  
Fig. 2. The same, under side.  
Fig. 3. *Taenaris gorgo yulei* nov. subspec. ♀, upper side.  
Fig. 4. The same, under side.

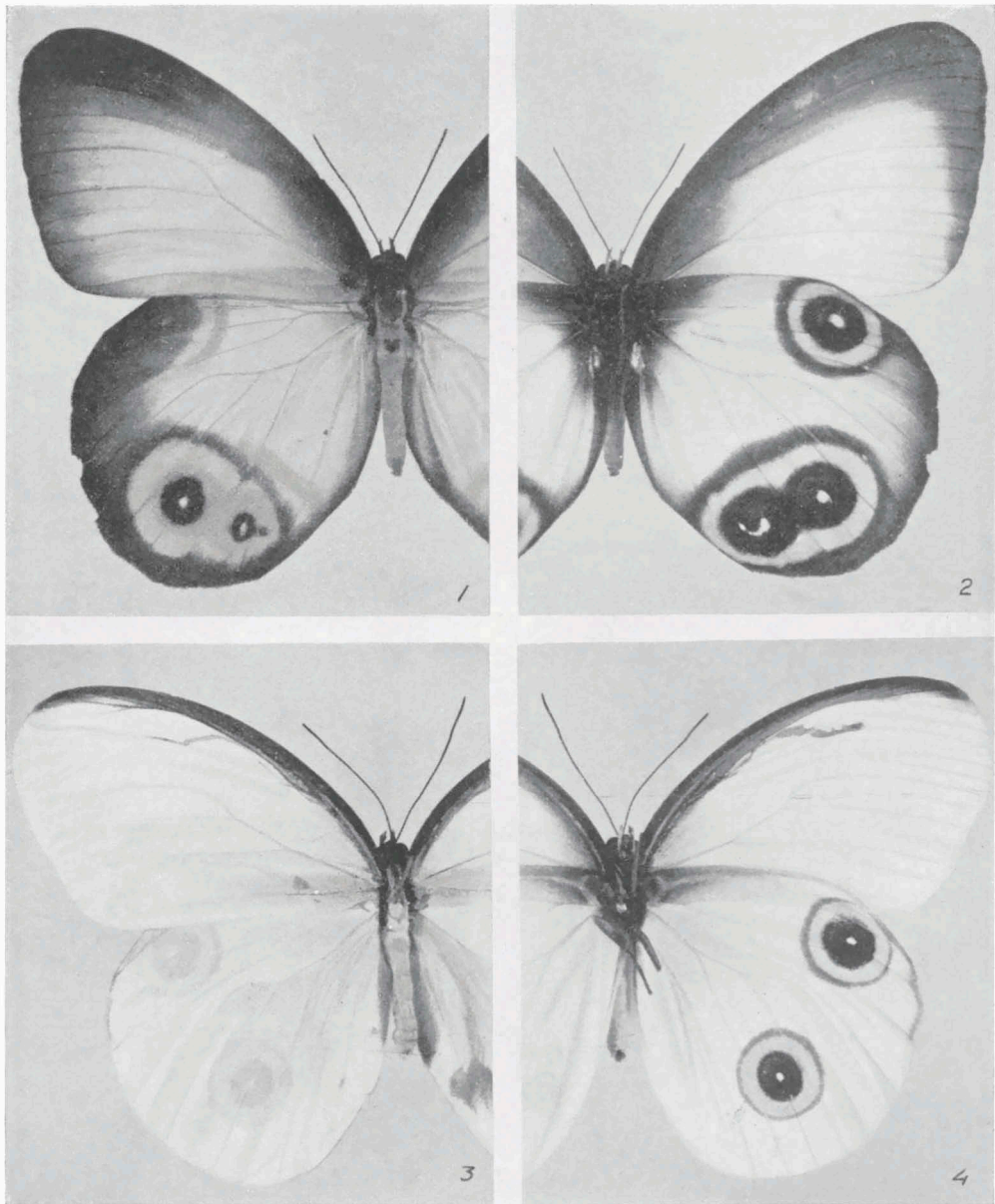
## PLATE XII

- Fig. 1. *Taenaris dimona sophaineta* Fruhst. ♂, upper side.  
Fig. 2. The same, under side.  
Fig. 3. *Taenaris dimona sophaineta* Fruhst. ♀, upper side.  
Fig. 4. The same, under side.

## PLATE XIII

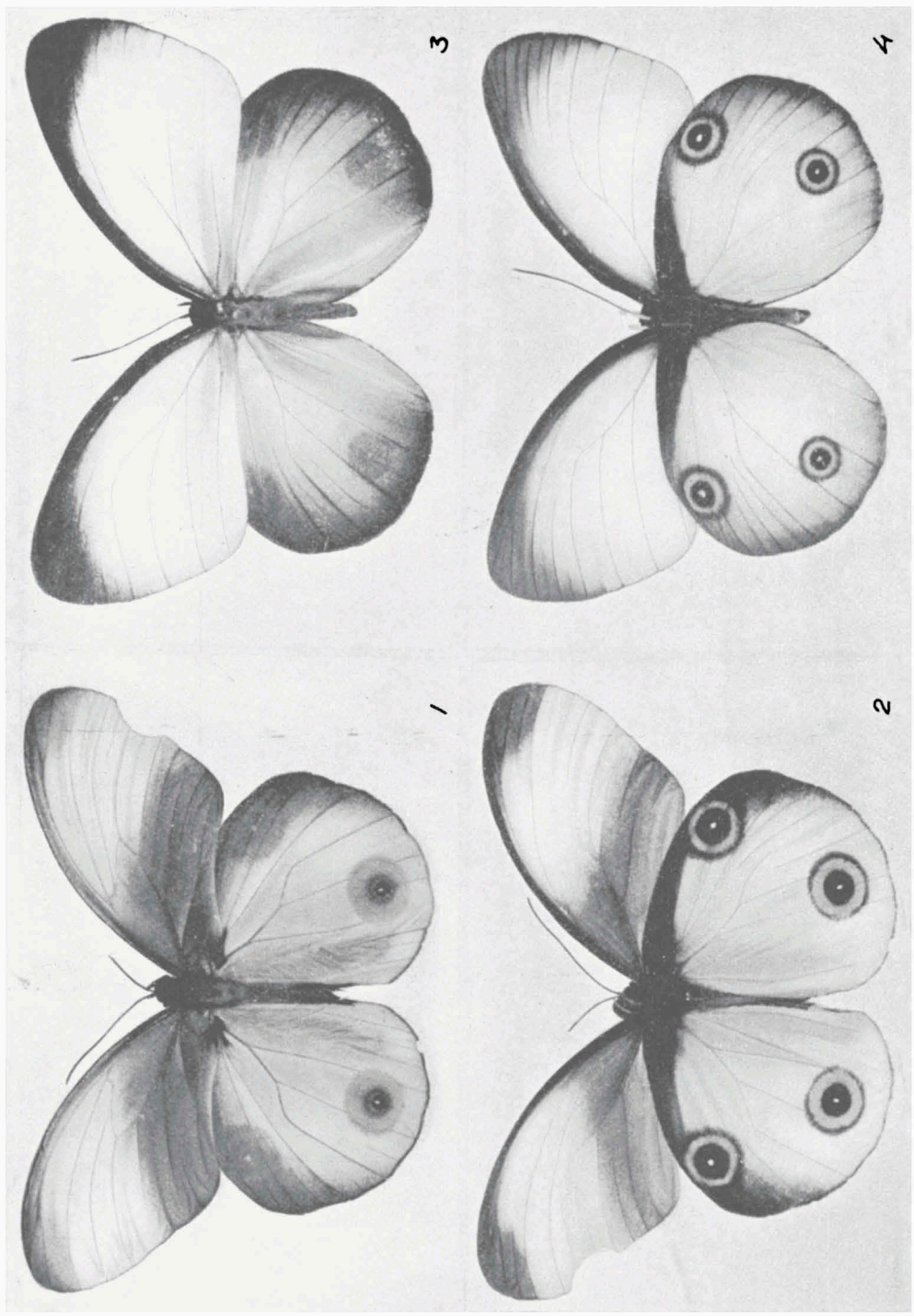
- Fig. 1. *Taenaris schönbergi vanheurni* nov. subspec. ♂, upper side.  
Fig. 2. The same, under side.  
Fig. 3. *Amathusia perakana perakana* Honr. ♀, upper side.  
Fig. 4. The same, under side.
-

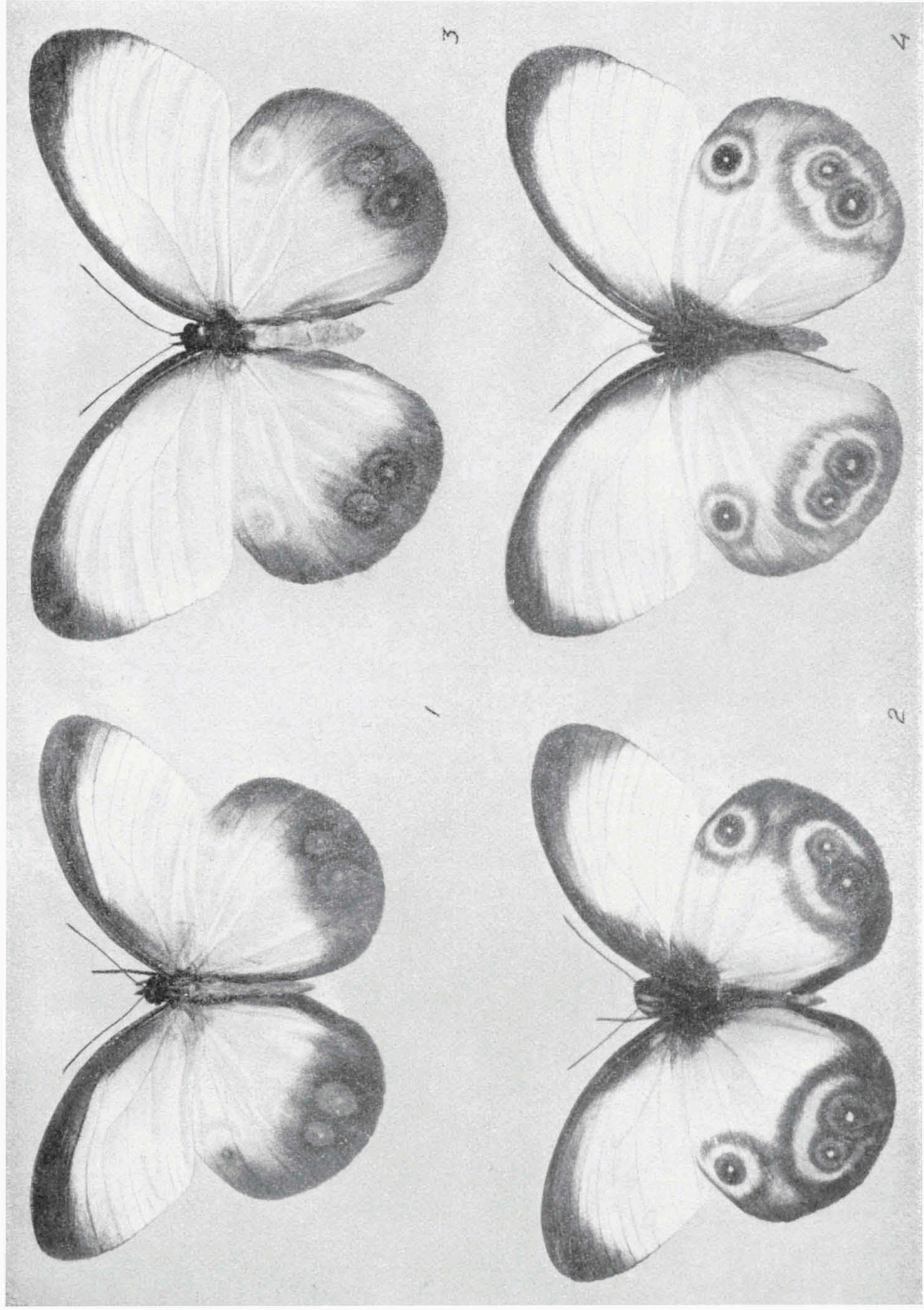


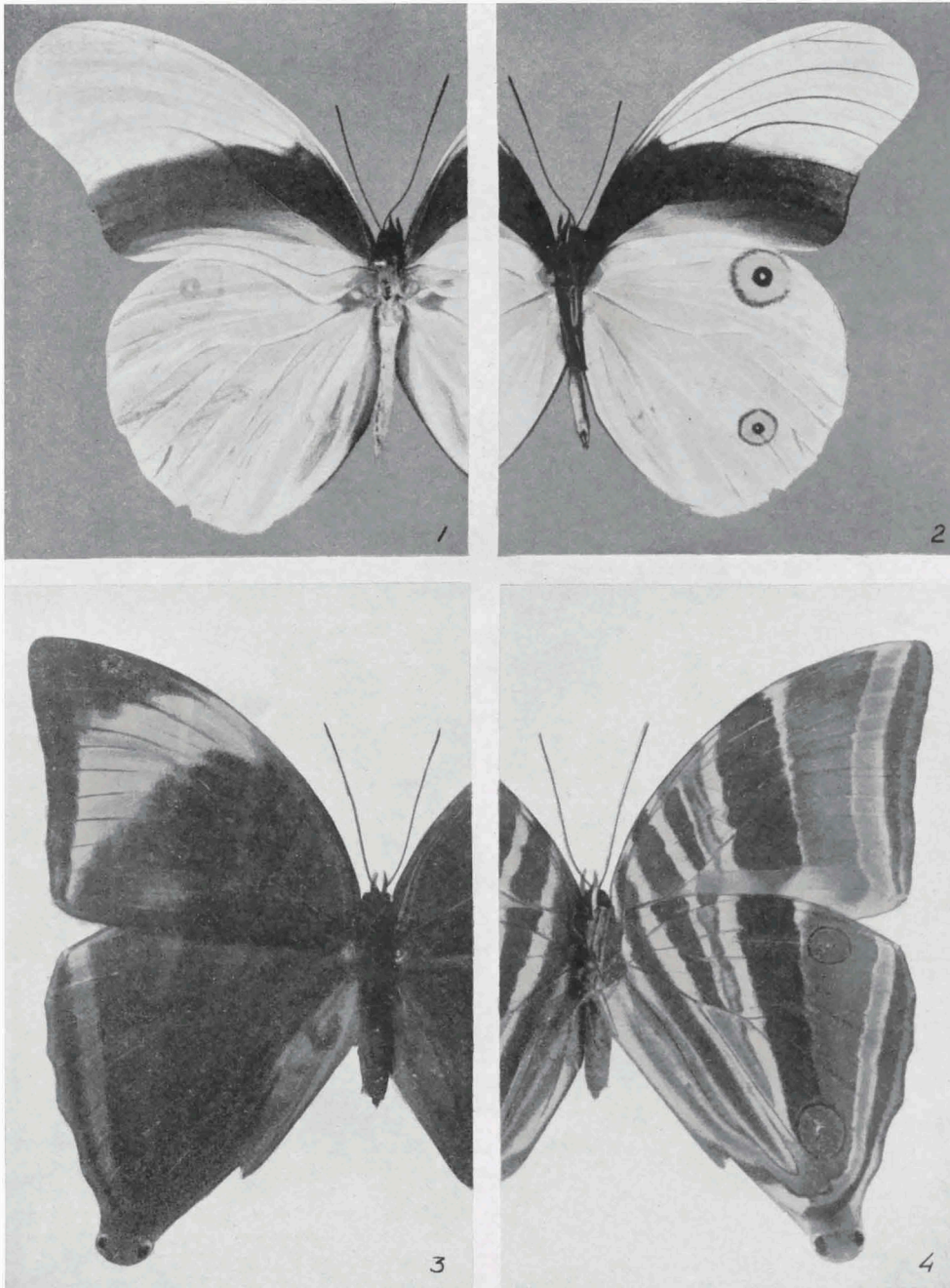


Dr C. de Jong phot.









Dr C. de Jong phot.